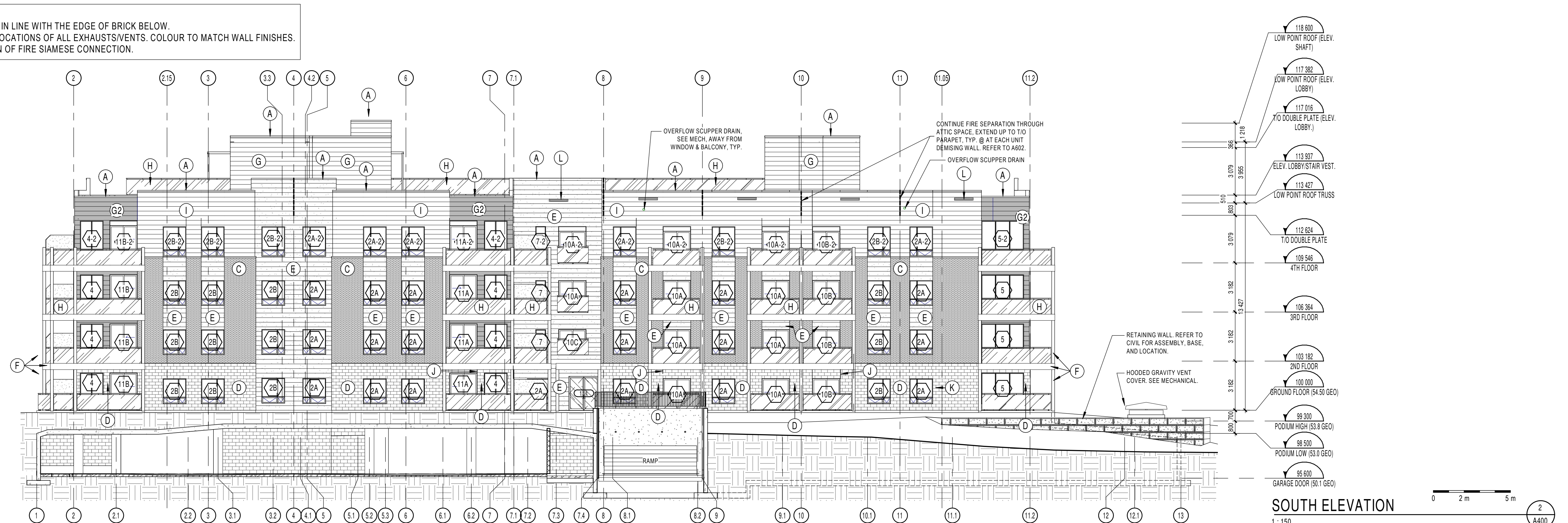


**Exterior finishes legend**

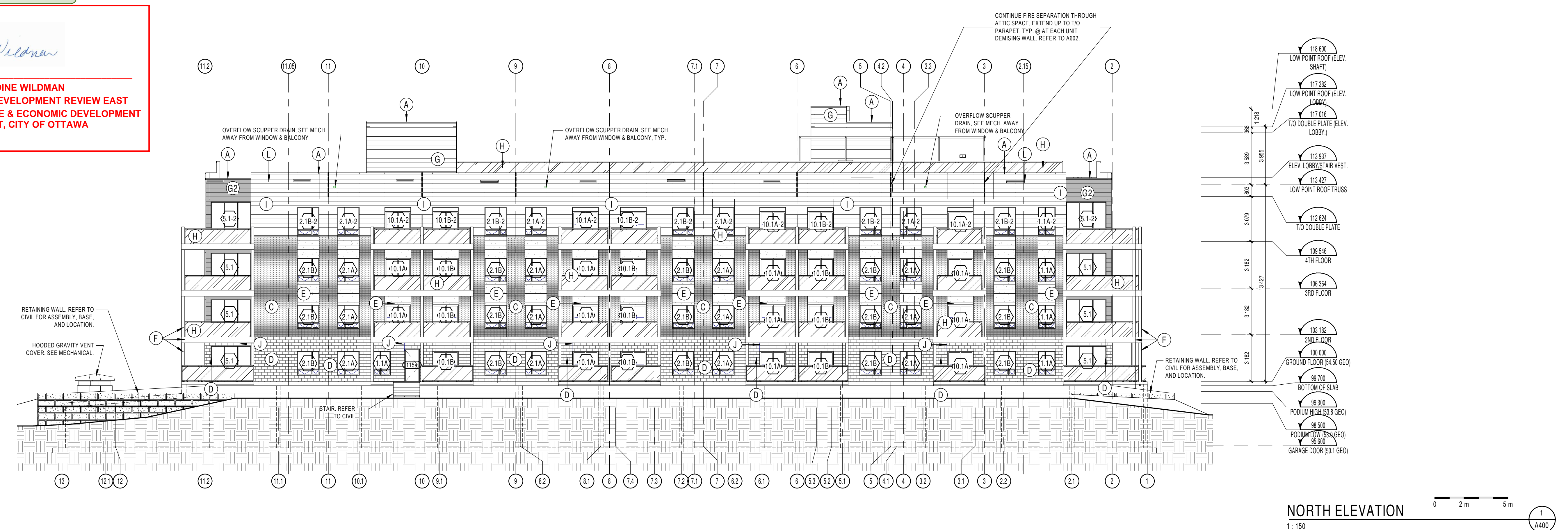
<b>A</b>	PREFINISHED MTL PARAPET CAP. COLOUR TO MATCH EXTERIOR WALL. PROVIDE MTL CLOSURE & FLASHING AROUND EACH DOOR & WINDOW OPENING. COLOUR TO MATCH WALL COLOUR.	<b>B</b>	NOT USED	<b>B2</b>	NOT USED	<b>C</b>	BRAMPTON BRICK ARCHITECTURAL SERIES. COLOUR: SILVER.	<b>D</b>	BRAMPTON STONE FINESSE SERIES 190309. STANDARD FINISH. COLOUR: ICELAND WHITE.	<b>E</b>	METALNUC, DISTINCTION PREPARED STEEL SIDING. COLOUR: CEDAR.	<b>F</b>	PREPARED ALUMINUM BALCONY POST CLADDING AND FASCIAS AT BALCONIES. COLOUR: CHARCOAL.	<b>G</b>	METALNUC, DISTINCTION PREPARED STEEL SIDING. COLOUR: URBAN GREY.	<b>H</b>	ALUMINUM GUARDRAIL & POSTS W/ CLEAR GLASS INFILL. PANELS, GUARDRAIL & POSTS COLOUR TO MATCH BALCONY POSTS. TYP. SEE SPECS FOR TYPE OF GLASS.	<b>I</b>	METALNUC, DISTINCTION PREPARED STEEL SIDING. COLOUR: BONEWHITE.	<b>J</b>	CONT. CONTROL JOINT ALONG MASONRY. SEE SPEC FOR MAX. SPACING. SEALER COLOUR: MATCH MASONRY.	<b>K</b>	WINDOW FRAME. COLOUR: BLACK.
<b>L</b>	PREFINISHED METAL LOUVER FOR ATTIC VENTILATION. 150x120mm. COLOUR TO MATCH WALL COLOUR. TYP. @ EACH UNIT.	<b>M</b>	VERTICAL HARDFIBER SIDING. SMOOTH FINISH. COLOUR: LIGHT GREY. TO BE USED ON EXPOSED FOUNDATION WALL NEAR AND AROUND GARAGE DOOR.																				

**NOTE:**  
 1. ALL CHANGE IN HEIGHT OF PARAPETS SHOULD BE IN LINE WITH THE EDGE OF BRICK BELOW.  
 2. REFER TO MECHANICAL DRAWINGS FOR SIZES & LOCATIONS OF ALL EXHAUSTS/VENTS. COLOUR TO MATCH WALL FINISHES.  
 3. REFER TO MECHANICAL DRAWINGS FOR LOCATION OF FIRE SIAMENSE CONNECTION.



**APPROVED**  
 By wildmange at 7:17 pm, Jun 01, 2022

*G. Wildman*  
**GERALDINE WILDMAN**  
 ACTING MANAGER, DEVELOPMENT REVIEW EAST PLANNING, REAL ESTATE & ECONOMIC DEVELOPMENT DEPARTMENT, CITY OF OTTAWA



**NOTES GÉNÉRALES / General Notes**  
 1. Ces documents d'architecture sont la propriété exclusive de NEUF architectes et ne peuvent être utilisés, reproduits ou copiés sans autorisation écrite préalable. / These architectural documents are the exclusive property of NEUF architectes and cannot be used, copied or reproduced without written pre-authorization.  
 2. Les dimensions apparaissant sur ces documents doivent être vérifiées par l'entrepreneur avant le début des travaux. / All dimensions which appear on the documents must be verified by the contractor before starting the work.  
 3. Veuillez avoir l'architecte de toute dimension erreur et/ou imprécisions entre ces documents et ceux des autres professionnels. / The architect must be notified of all errors, omissions and discrepancies between these documents and those of the other professionals.  
 4. Les dimensions sur ces documents doivent être lues et non mesurées. / The dimensions on these documents must be read and not measured.

**GEOTECHNIQUE / Geotechnical**  
**Paterson Group Inc.**  
 154 Colomède Road South Ottawa (Nepere), Ontario Canada K2E 7J5  
 T 613 226-7381 www.patersongroup.ca

**MÉCANIQUE ÉLECTRIQUE / Mechanical Electrical**  
**LCA**  
 25, rue De Valcourt, unité 6, Gatineau, Québec J8T 8H1  
 T 819 24-8383 www.larouchecanada.ca

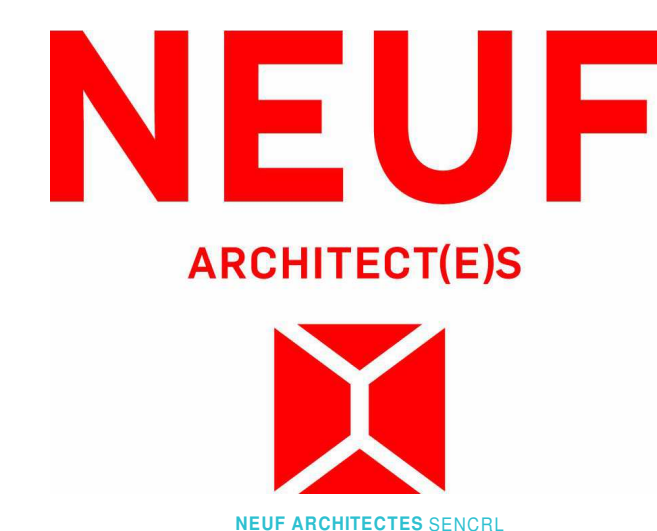
**STRUCTURE / structure**  
**qdi**  
 635, boulevard de la Gappe, gatineau (QC) J8T 8G1  
 T 819 243-4424 qdi.ca

**ARCHITECTURE DE PAYSAGE / Landscape Architect**  
**Levstek Consultants**  
 8971 Hugh Crockett, Ottawa ON K0K 0V0  
 T 613 825 0518 larouchecanada.com

**CIVIL / Civil**  
**Stantec**  
 400 - 1331 Clyde Avenue, Ottawa ON K2C 3G4  
 T 613 724-6337 kris.albor@stantec.com

**ARCHITECTES ARCHITECT**  
**NEUF Architect(e)s** SENCLR  
 630, St-Jas, Rues-Lévesque O. 52e étage, Montréal QC H3B 1S6  
 T 514 847 1117 NEUFArchitectes.com

**SCEAU / Seal**



**CLIENT / Client**  
**brigi**

**OUVRAGE / Project**  
**PETRIES II BLOCK 8**  
 112 units  
 ORLEANS, ON

NO	REVISION	DATE (aa-mm-ii)
A	Issue for Coordination	2021-07-16
B	Issued for Coordination	2021-08-13
C	Issued for Permit (Cancelled)	2021-08-30
D	Issued for SPA	2021-09-23
E	Issued for Full Building Permit	2021-10-01
F	Issued for Tender	2021-10-15
G	Permit 1st Review	2021-12-03
H	Issued for Coordination	2022-02-11
I	Issued for SPA	2022-02-25

**DESSINÉ PAR / Drawn by**  
 PM

**VÉRIFIÉ PAR / Checked by**  
 Paul McQ.

**DATE (aa.mm.ii)**  
 06/14/17

**ÉCHELLE / Scale**  
 As indicated

**TITRE DU DESSIN / Drawing Title**  
**NORTH & SOUTH ELEVATIONS**

**REVISION / Revision**  
**NO. DESSIN / Dwg Number**  
**A400**

C:\Fichiers Revit\Locaux\P2BL8\_10498.02\_ARC\_INT\_P20\_pmqueen.rvt