

Copyright Reserved
The Contractor shall verify and be responsible for all dimensions. DO NOT scale the drawing - any errors or omissions shall be reported to Stantec without delay.
The Copyrights to all designs and drawings are the property of Stantec. Reproduction or use for any purpose other than that authorized by Stantec is forbidden.

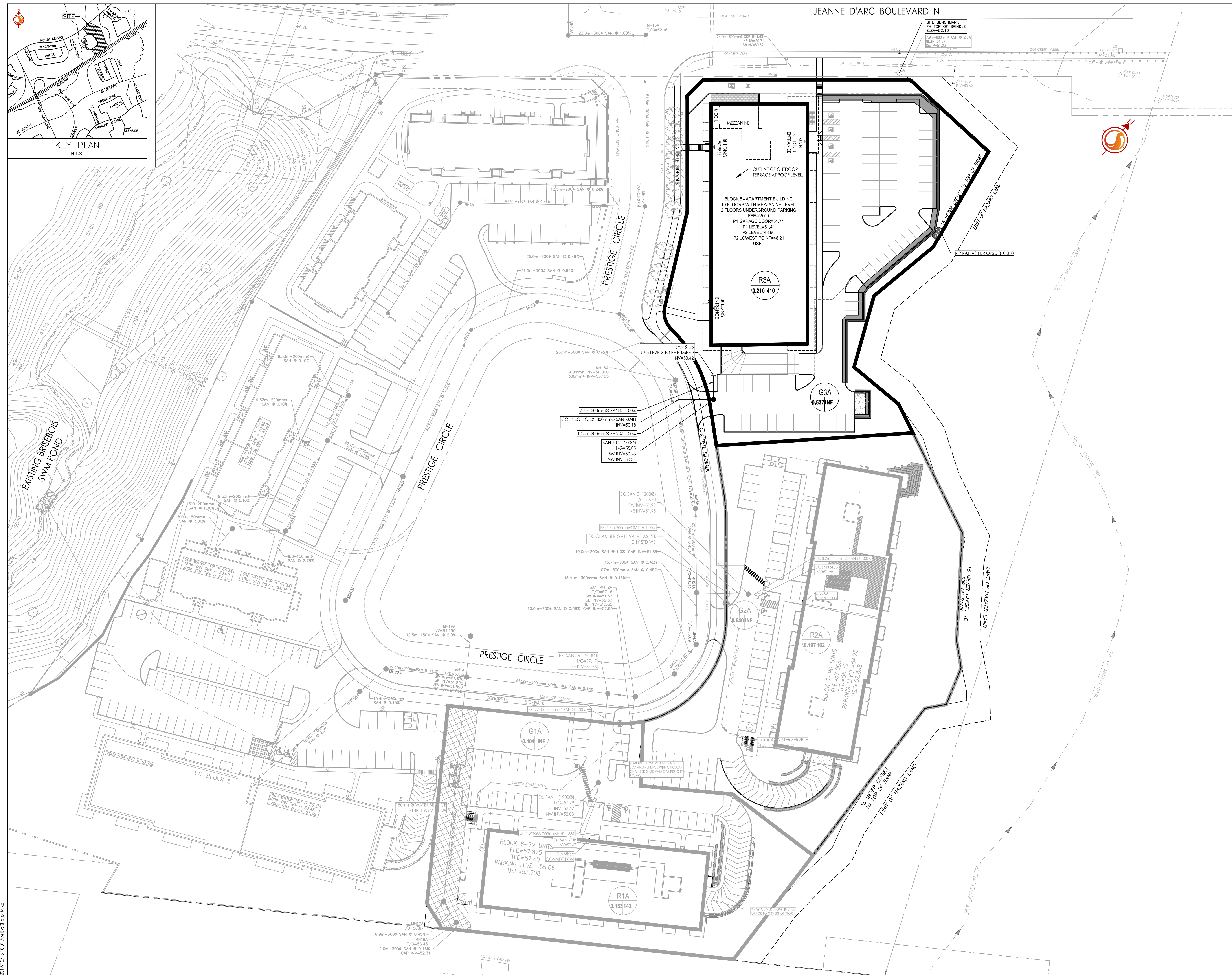
- Legend**
- R1A 0.38/155 SANITARY DRAINAGE AREA ID#
 - R2A 0.197/162 SANITARY DRAINAGE AREA ID#
 - R3A 0.210/410 SANITARY DRAINAGE AREA ID#
 - G1A 0.404 INF SANITARY DRAINAGE AREA ID#
 - G2A 0.680 INF SANITARY DRAINAGE AREA ID#
 - G3A 0.537 INF SANITARY DRAINAGE AREA ID#
 - INF INFILTRATION RATES
 - S.D. SANITARY DRAINAGE AREA
 - P.S.S. PROPOSED SANITARY SEWER

Notes

SANITARY STATS

POPULATION COUNT

57 - 1 BEDROOM APTS @ 1.4PPU = 80 PEOPLE
157 - 2 BEDROOM APTS @ 2.1PPU = 330 PEOPLE
TOTAL POPULATION = 410



1.01/10/2013 10:00 AM 16401331_01.dwg
 2013/07/10 10:00 AM 16401331_01.dwg
 ORIGINAL SHEET - ARCH D

Revision	Description	By	Appd.	Date
0	ISSUED FOR SPA	MJS	AMP	19.12.13
1				
2				
3				
4				
5				
6				
7				
8				
9				

Permit-Seal

Client/Project
BRIGIL
PETRIE'S LANDING II

BLOCK 6, 7, AND 8
8466 JEANNE D'ARC BOULEVARD
OTTAWA, ON, CANADA

Title
SANITARY DRAINAGE PLAN

Project No. 160401331
Drawing No. SAN-1
Scale 1:500
Sheet 6 of 6
Revision

Project No. 160401331
Drawing No. SAN-1
Scale 1:500
Sheet 6 of 6
Revision