

Exterior finishes legend

A	PREFINISHED MTL PARAPET CAP. COLOUR TO MATCH EXTERIOR WALL COLOUR PROVIDE MTL. CLOSURE & FLASHING AROUND EACH DOOR & WINDOW OPENING. COLOUR TO MATCH WALL COLOUR	B	NOT USE JAMES WATTS FIBER CEMENT LAP OR EQUIVALENT: COLOUR: LIGHT GREY	B2	NOT USE HARDIE FIBER CEMENT LAP OR EQUIVALENT: COLOUR: CHARCOAL	C	BRAMPTON BRICK ARCHITECTURAL SERIES COLOR: SILVER	D	BRAMPTON STONE FINESSE SERIES 190300: STANDARD FINISH COLOUR: ICELAND WHITE	E	METALINIC, DISTINCTION PREPARED STEEL SIDING COLOUR: CEDAR	F	PREPARED ALUMINUM BALCONY POST CLADDING AND FASCIAS AT BALCONIES COLOUR: CHARCOAL	G	METALINIC, DISTINCTION PREPARED STEEL SIDING COLOUR: URBAN GREY	H	ALUMINUM GUARDRAIL & POSTS W/ CLEAR GLASS INFILL PANELS, GUARDRAIL & POSTS COLOUR TO MATCH BALCONY POSTS. TYP. SEE SPECS FOR TYPE OF GLASS.	I	METALINIC, DISTINCTION PREPARED STEEL SIDING COLOUR: BONEWHITE	J	CONT. CONTROL JOINT ALONG MASONRY. SEE SPEC FOR MAX. SPACING. SEALER COLOUR: MATCH MASONRY.	K	WINDOW FRAME COLOUR: BLACK
L	PREFINISHED METAL LOUVER FOR ATTIC VENTILATION. 150x1220mm. COLOUR TO MATCH WALL COLOUR. TYP. @ EACH UNIT	M	VERTICAL HARDIPANEL SIDING SMOOTH FINISH COLOUR: LIGHT GREY TO BE USED ON EXPOSED FOUNDATION WALL NEAR AND AROUND GARAGE DOOR																				

NOTE:
 1. ALL CHANGE IN HEIGHT OF PARAPETS SHOULD BE IN LINE WITH THE EDGE OF BRICK BELOW.
 2. REFER TO MECHANICAL DRAWINGS FOR SIZES & LOCATIONS OF ALL EXHAUSTS/VENTS. COLOUR TO MATCH WALL FINISHES.
 3. REFER TO MECHANICAL DRAWINGS FOR LOCATION OF FIRE SIAMESE CONNECTION.

NOTES GÉNÉRALES / General Notes
 1. Ces documents d'architecture sont la propriété exclusive de NEUF architecte et ne peuvent être utilisés, reproduits ou copiés sans autorisation écrite préalable. / These architectural documents are the exclusive property of NEUF architecte and cannot be used, copied or reproduced without written pre-authorization.
 2. Les dimensions apparaissant sur ces documents doivent être vérifiées par l'entrepreneur avant le début des travaux. / All dimensions which appear on the documents must be verified by the contractor before to start the work.
 3. Veuillez aviser l'architecte de toute dimension erreur et/ou omission entre ces documents et ceux des autres professionnels. / The architect must be notified of all errors, omissions and discrepancies between these documents and those of the others professionals.
 4. Les dimensions sur ces documents doivent être lues et non mesurées. / The dimensions on these documents must be read and not measured.

GEOTECHNIQUE / Geotechnical
Paterson Group Inc.
 154 Colomade Road South Ottawa (Nepean), Ontario Canada K2E 7J5
 T 613 226-7381 www.patersongroup.ca

MÉCANIQUE ÉLECTRIQUE / Mechanical Electrical
LCA
 15 rue De Vaucourt, unité 6, Gatineau, Québec J8T 8H1
 T 819 24-8383 www.larouchecanada.ca

STRUCTURE / structure
qdi
 635, boulevard de la Gaspie, gatineau (QC) J8T 8G1
 T 819 243-4474 qdi.ca

ARCHITECTURE DE PAYSAGE / Landscape Architect
Levstek Consultants
 6971 Hugh Crockett, Ottawa ON K0A 0V0
 T 613 826 0518 larocquellevstek.com

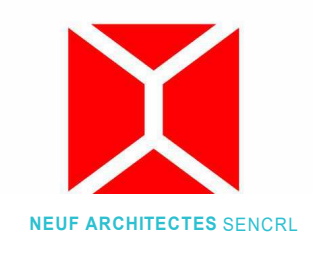
CIVIL / Civil
Stantec
 400 - 1331 Clyde Avenue, Ottawa ON K2C 3G4
 T 613 724-6337 kris.kilborn@stantec.com

ARCHITECTES / Architect
NEUF architect(e)s SENCLR
 630, St-Jul, René-Lévesque O. 32e étage, Montréal QC H3B 1S6
 T 514 847 1117 NEUFarchitectes.com

SCEAU / Seal



NEUF ARCHITECT(E)S



CLIENT / Client
brigil

OUVRAGE / Project
PETRIES II BLOCK 8
 112 units
 ORLEANS, ON

NO	RÉVISION	DATE (aa-mm-ii)
A	Issue for Coordination	2021-07-16
B	Issued for Coordination	2021-08-13
C	Issued for Permit	2021-08-30
D	Issued for SPA	2021-09-23

NO PROJCT No.
 10498.02

DESSIN PAR / Drawn by
 PM

VÉRIFIÉ PAR / Checked by
 Paul McQ.

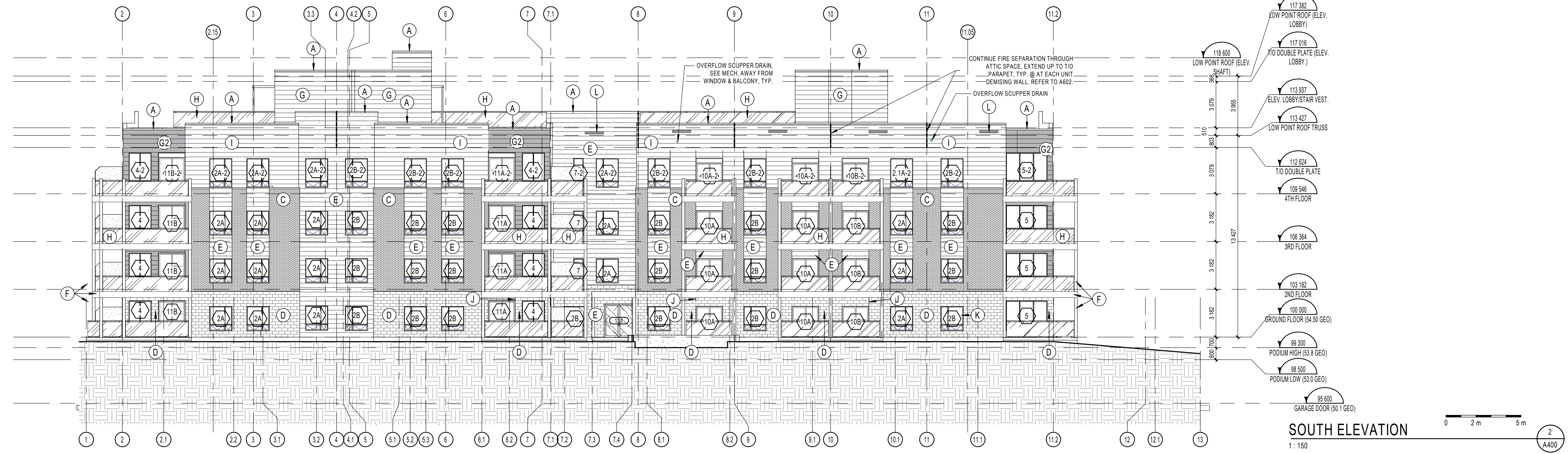
DATE (aa-mm-ii)
 06/14/17

ÉCHELLE / Scale
 As indicated

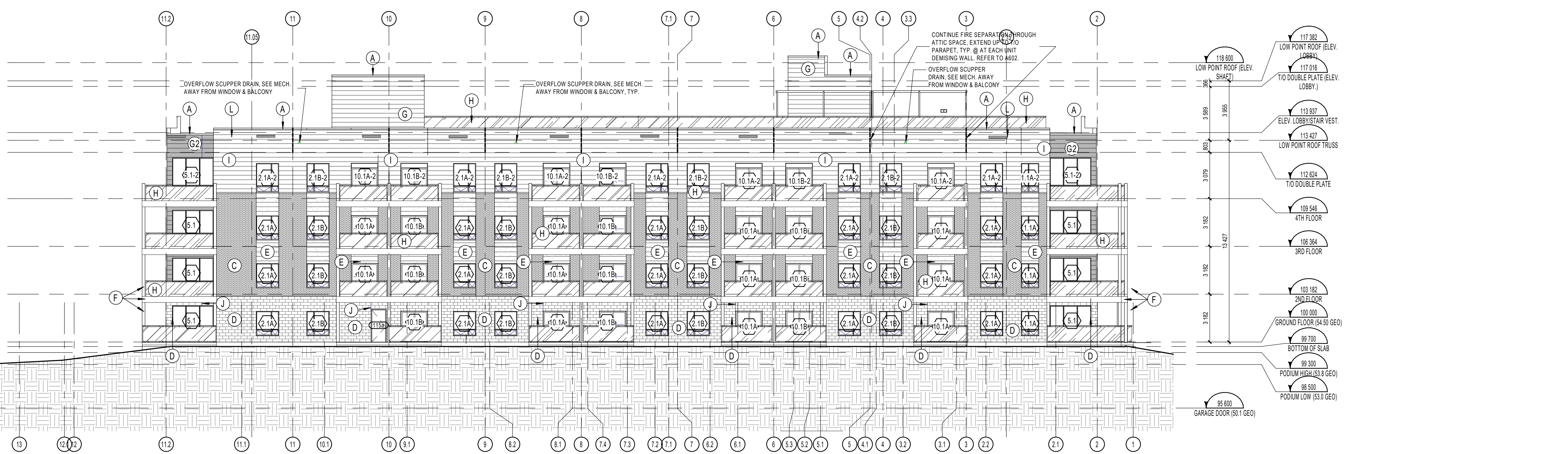
TITRE DU DESSIN / Drawing Title
NORTH & SOUTH ELEVATIONS

RÉVISION / Revision
D

NO. DESSIN / Dwg Number
A400



SOUTH ELEVATION
 1 : 150



NORTH ELEVATION
 1 : 150

C:\Fichiers Revit\Locaux\P2BL8_10498.02_ARC_INT_R20_pmqqueen.rvt

CITY OF OTTAWA FILE NUMBER: 2021-09-23-15-19-0212