

ROOM LEGEND

■ PARTY ROOM MEZZANINE

GENERAL NOTES

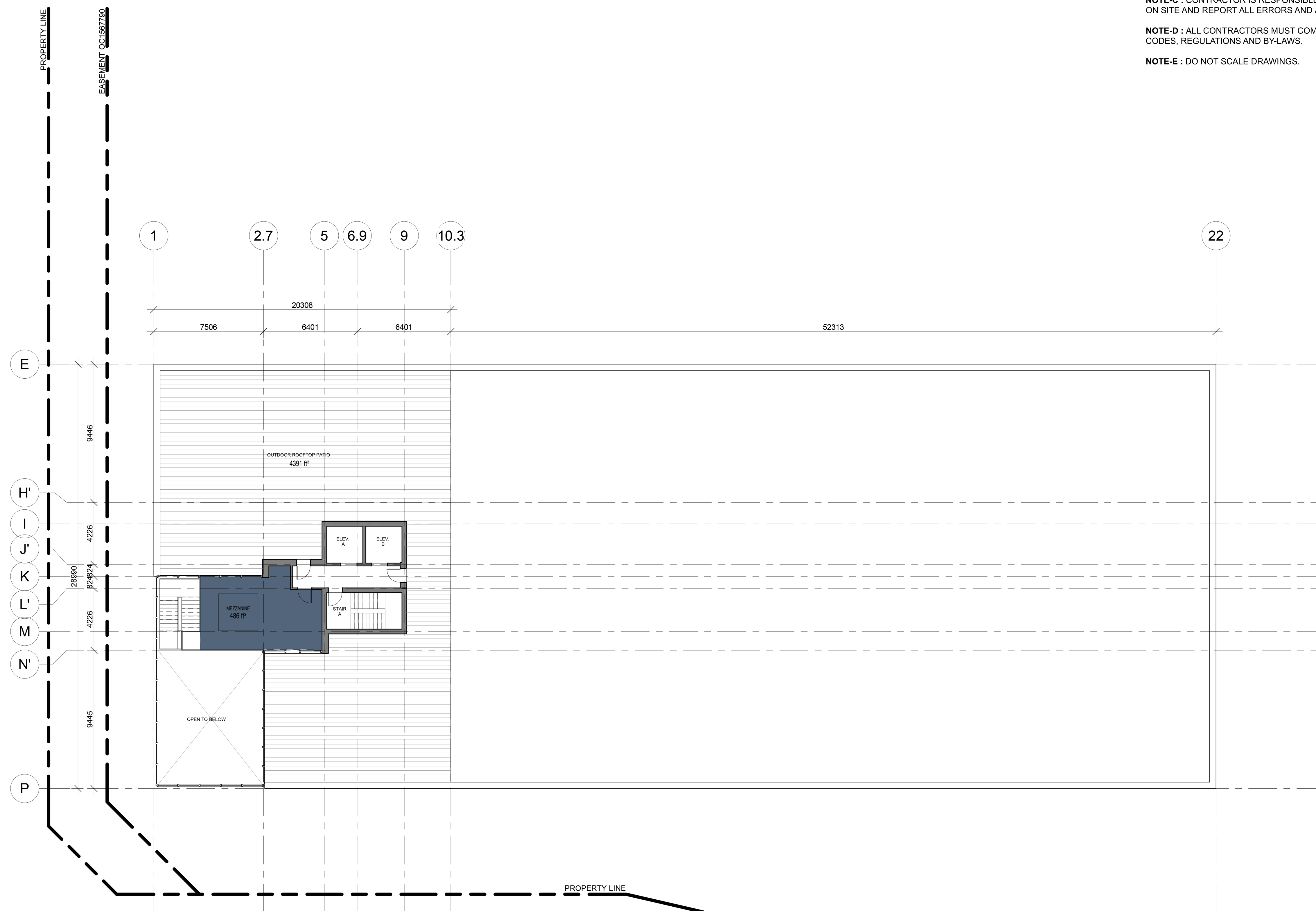
NOTE-A : ALL DRAWINGS ARE TO BE READ IN CONJUNCTION WITH ALL OTHER DRAWINGS AND SPECIFICATIONS, INCLUDING OTHER CONSULTANT'S DRAWINGS AND SPECIFICATIONS. ANY DISCREPANCIES BETWEEN DRAWINGS WILL BE REPORTED TO THE PROJECT LEAD IMMEDIATELY FOR CLARIFICATION PRIOR TO COMMENCING ANY CONSTRUCTION.

NOTE-B : ALL GENERAL SITE INFORMATION AND CONDITIONS HAVE BEEN COMPILED FROM EXISTING PLANS AND SURVEY.

NOTE-C : CONTRACTOR IS RESPONSIBLE TO CHECK AND VERIFY ALL DIMENSIONS ON SITE AND REPORT ALL ERRORS AND / OR OMISSIONS TO THE ARCHITECT.

NOTE-D : ALL CONTRACTORS MUST COMPLY WITH ALL CURRENT APPLICABLE CODES, REGULATIONS AND BY-LAWS.

NOTE-E : DO NOT SCALE DRAWINGS.



This document and all information herein is confidential and the intellectual property of Rossmann Architects. It is disclosed in confidence on terms that it will not be disclosed to any third party, used, copied, licensed, or reproduced in whole or in any part in any manner or form for manufacturing, marketing or for any other purpose without the written permission of Rossmann Architects.

The copyright is retained by Rossmann Architects and Associates Inc. Ce document, ainsi que toutes informations contenues à l'intérieur, est la propriété de Rossmann Architects. Il est divulgué en confiance sous les termes qu'il ne sera pas divulgué à aucun tiers, utilisé, vendu, prêté, licencié ou reproduit en son entier ou en partie d'aucune manière pour la manufacture, soumission ou pour autres fins sans la permission écrite de Rossmann Architects.

Le droit d'auteur est réservé par Rossmann Architects.



ROSSMANN
ARCHITECTURE

88 Saint-Joseph
Boulevard, Gatineau
QC J8Y 3W5
819-600-1555

Drawn by / Dessiné par
Author
Reviewed by / Révisé par
Designer

TEAM / ÉQUIPE

PLANNING
PAQUETTE PLANNING ASS. Ltd.
T 613.722.7217

CIVIL
STANTEC CONSULTING Ltd.
T 613.722.4420

STRUCTURAL ENG.
CPF GROUPE CONSEIL
T 513.667.5450

MECHANICAL / ELECTRICAL ENG.
LCA EXPERT CONSULTANTS
T 819.243.8383

LANDSCAPE
LEVSTEK CONSULTANTS
T 613.826.0518

Revision	Date	Description
1	19/12/06	ISSUED FOR SITE PLAN CONTROL



Revision	Date	Description
----------	------	-------------

BRIGIL

19-001
PETRIE'S LANDING BLOCK 8

PLAN DU NIVEAU 11 MEZZ