

Copyright Reserved

The Contractor shall verify and be responsible for all dimensions. DO NOT scale the drawing - any errors or omissions shall be reported to Stantec without delay.  
The Copyrights to all designs and drawings are the property of Stantec. Reproduction or use for any purpose other than that authorized by Stantec is forbidden.

Legend

- AREA ID
- RUNOFF COEFFICIENT
- STORM DRAINAGE AREA b.c.
- STORM DRAINAGE BOUNDARY
- MAXIMUM PONDING LIMITS
- DIRECTION OF EMERGENCY OVERLAND FLOW
- PROPOSED STORM SEWER
- PROPOSED CATCHBASIN MANHOLE
- PROPOSED CATCHBASIN
- PROPOSED DOUBLE CATCH BASIN
- PROPOSED SUB DRAIN CATCH BASIN AS PER CITY OF OTTAWA STANDARD DETAIL DRAWINGS L10 AND L11.
- PROPOSED PERFORATED SUBDRAIN
- EXISTING STORM SEWER
- EXISTING CATCHBASIN MANHOLE
- EXISTING CATCHBASIN
- EXISTING SUBDRAIN CATCHBASIN
- THERMAL INSULATION ON STORM SEWER WHERE COVER IS LESS THAN 1.5m. THERMAL INSULATION ON WATERMAIN WHERE COVER IS LESS THAN 2.4m AS PER W22.

Notes

SCHEDULE OF ROOF RELEASE RATES				
BUILDING	DRAIN TYPE	# DRAINS	100YR Head (m)	100YR RELEASE RATE (L/s)
BLOCK 8	WATTS ACCUFLOW (50% OPEN)	8	0.15	10.02

SCHEDULE FOR PARKING RAMP TRENCH DRAINS			
BLOCK ID	DRAINAGE AREA ID	100YR RELEASE RATE (L/s)	
BLOCK 8	F1000A	11.91	

SCHEDULE OF INLET CONTROL DEVICES				
AREA ID	CATCHBASIN ID	TYPE	100YR HEAD (m)	100YR RELEASE RATE (L/s)
F1001A	CB1001A	90mm <sup>2</sup> ORIFICE	1.85	23.38
F1001B	CB1001B	LWF 70	2.00	6.10
F1004A	CBM1003	90mm <sup>2</sup> ORIFICE	1.83	23.25

- NOTES:  
1. PROPOSED BUILDINGS TO BE EQUIPPED WITH BACKWATER VALVES  
2. PROPOSED TRENCH DRAINS TO BE DESIGNED TO CAPTURE 100 YEAR PEAK FLOWS.

0	ISSUED FOR SPA	MJS	AMP	19.12.13
Revision		By	Appd.	YY.MM.DD
File Name:	160401331_D82.dwg	MJS	AMP	MJS
		Dwn.	Chkd.	Dgn.
				YY.MM.DD

Permit-Seal

Client/Project

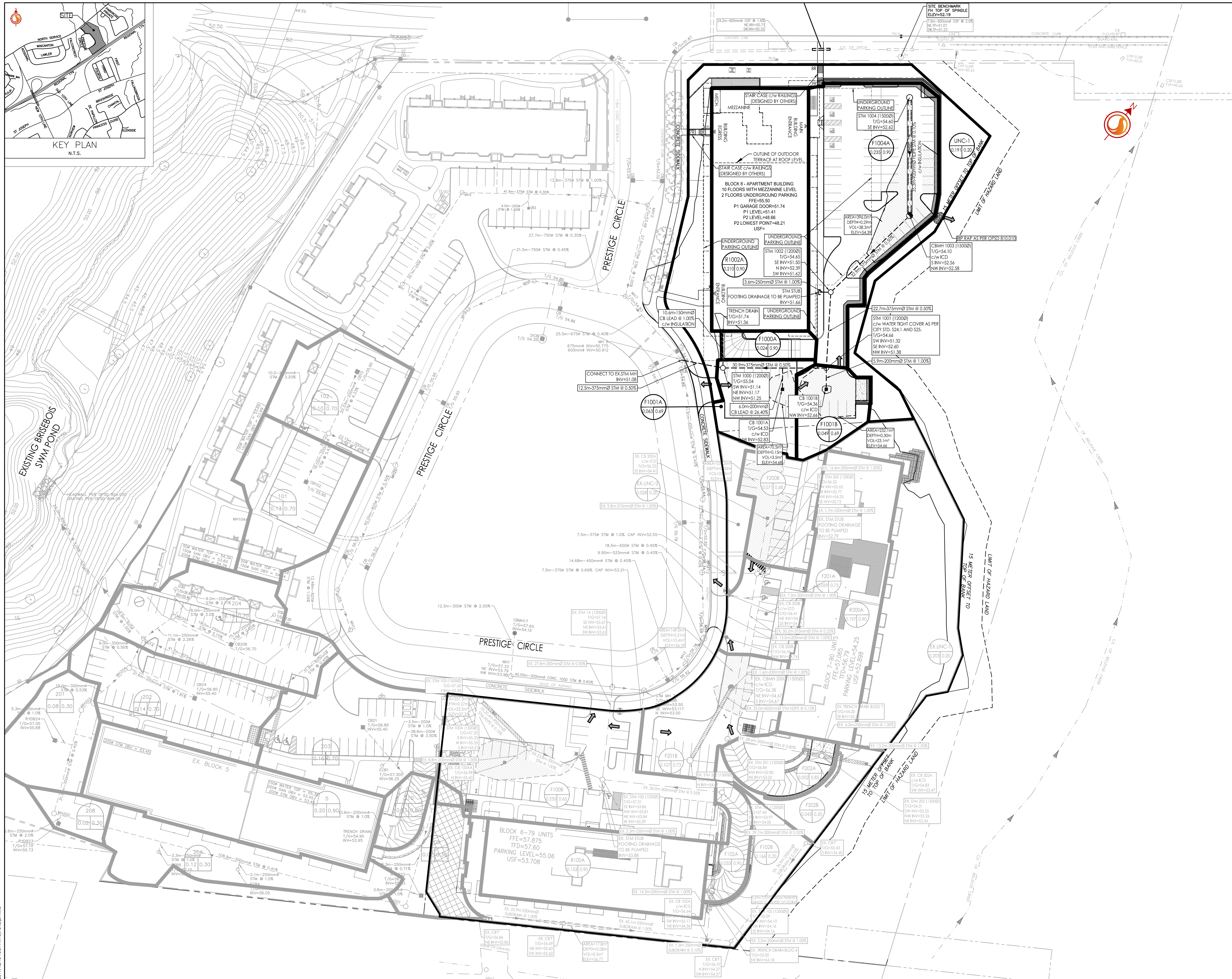
BRIGIL  
PETRIE'S LANDING II  
  
BLOCK 6, 7, AND 8  
8466 JEANNE D'ARC BOULEVARD  
OTTAWA, ON, CANADA

Title

STORM DRAINAGE PLAN

Project No.	Scale	0 5 15 25m
160401331	1:500	
Drawing No.	Sheet	Revision

SD-1 5 of 6 0



160401331.dwg, 160401331\_Rev1.dwg, 160401331\_Rev2.dwg, 160401331\_Rev3.dwg, 160401331\_Rev4.dwg, 160401331\_Rev5.dwg, 160401331\_Rev6.dwg, 160401331\_Rev7.dwg, 160401331\_Rev8.dwg, 160401331\_Rev9.dwg, 160401331\_Rev10.dwg, 160401331\_Rev11.dwg, 160401331\_Rev12.dwg, 160401331\_Rev13.dwg, 160401331\_Rev14.dwg, 160401331\_Rev15.dwg, 160401331\_Rev16.dwg, 160401331\_Rev17.dwg, 160401331\_Rev18.dwg, 160401331\_Rev19.dwg, 160401331\_Rev20.dwg, 160401331\_Rev21.dwg, 160401331\_Rev22.dwg, 160401331\_Rev23.dwg, 160401331\_Rev24.dwg, 160401331\_Rev25.dwg, 160401331\_Rev26.dwg, 160401331\_Rev27.dwg, 160401331\_Rev28.dwg, 160401331\_Rev29.dwg, 160401331\_Rev30.dwg, 160401331\_Rev31.dwg, 160401331\_Rev32.dwg, 160401331\_Rev33.dwg, 160401331\_Rev34.dwg, 160401331\_Rev35.dwg, 160401331\_Rev36.dwg, 160401331\_Rev37.dwg, 160401331\_Rev38.dwg, 160401331\_Rev39.dwg, 160401331\_Rev40.dwg, 160401331\_Rev41.dwg, 160401331\_Rev42.dwg, 160401331\_Rev43.dwg, 160401331\_Rev44.dwg, 160401331\_Rev45.dwg, 160401331\_Rev46.dwg, 160401331\_Rev47.dwg, 160401331\_Rev48.dwg, 160401331\_Rev49.dwg, 160401331\_Rev50.dwg, 160401331\_Rev51.dwg, 160401331\_Rev52.dwg, 160401331\_Rev53.dwg, 160401331\_Rev54.dwg, 160401331\_Rev55.dwg, 160401331\_Rev56.dwg, 160401331\_Rev57.dwg, 160401331\_Rev58.dwg, 160401331\_Rev59.dwg, 160401331\_Rev60.dwg, 160401331\_Rev61.dwg, 160401331\_Rev62.dwg, 160401331\_Rev63.dwg, 160401331\_Rev64.dwg, 160401331\_Rev65.dwg, 160401331\_Rev66.dwg, 160401331\_Rev67.dwg, 160401331\_Rev68.dwg, 160401331\_Rev69.dwg, 160401331\_Rev70.dwg, 160401331\_Rev71.dwg, 160401331\_Rev72.dwg, 160401331\_Rev73.dwg, 160401331\_Rev74.dwg, 160401331\_Rev75.dwg, 160401331\_Rev76.dwg, 160401331\_Rev77.dwg, 160401331\_Rev78.dwg, 160401331\_Rev79.dwg, 160401331\_Rev80.dwg, 160401331\_Rev81.dwg, 160401331\_Rev82.dwg, 160401331\_Rev83.dwg, 160401331\_Rev84.dwg, 160401331\_Rev85.dwg, 160401331\_Rev86.dwg, 160401331\_Rev87.dwg, 160401331\_Rev88.dwg, 160401331\_Rev89.dwg, 160401331\_Rev90.dwg, 160401331\_Rev91.dwg, 160401331\_Rev92.dwg, 160401331\_Rev93.dwg, 160401331\_Rev94.dwg, 160401331\_Rev95.dwg, 160401331\_Rev96.dwg, 160401331\_Rev97.dwg, 160401331\_Rev98.dwg, 160401331\_Rev99.dwg, 160401331\_Rev100.dwg