

Copyright Reserved

The Contractor shall verify and be responsible for all dimensions. DO NOT locate the drawing - any errors or omissions shall be reported to Stantec without delay. The Copyrights to all designs and drawings are the property of Stantec. Reproduction or use for any purpose other than that authorized by Stantec is forbidden.

Legend

- PROPOSED SILT FENCE BOUNDARY AS PER OPSD 219.110
- PROPOSED CONSTRUCTION FENCING
- PROPOSED MUD MAT LOCATION
- PROPOSED CATCH BASIN PROTECTION AS PER TERRAFIX SILTSACK DETAIL.
- PROPOSED CATCH BASIN MH PROTECTION AS PER FLEX STORM INLET FILTERS DETAIL.

Notes

Best Management Practices

CONTRACTOR TO PROVIDE EROSION AND SEDIMENT CONTROLS (BEST MANAGEMENT PRACTICES) DURING CONSTRUCTION OF THIS PROJECT.

EROSION MUST BE MINIMIZED AND SEDIMENTS MUST BE REMOVED FROM CONSTRUCTION SITE RUN-OFF IN ORDER TO PROTECT DOWNSTREAM AREAS. DURING ALL CONSTRUCTION, EROSION AND SEDIMENTATION SHOULD BE CONTROLLED BY THE FOLLOWING TECHNIQUES:

1. LIMIT THE EXTENT OF EXPOSED SOILS AT ANY GIVEN TIME.
2. REVEGETATE EXPOSED AREAS AND SLOPES AS SOON AS POSSIBLE.
3. MINIMIZE AREA TO BE CLEARED AND GRUBBED.
4. PROTECT EXPOSED SLOPES WITH PLASTIC OR SYNTHETIC MULCHES.
5. INSTALL CATCH BASIN INSERTS OR EQUIVALENT IN ALL PROPOSED CATCH BASINS AND CATCH BASIN MANHOLES AND IN ALL EXISTING CATCH BASINS THAT WILL RECEIVE RUN-OFF FROM THE SITE.
6. A SILT FENCE SHALL BE INSTALLED AROUND THE PERIMETER OF ALL AND ANY STOCKPILES OF MATERIAL TO BE USED OR REMOVED FROM THE SITE. (LOCATION TO BE DETERMINED)
7. A VISUAL INSPECTION SHALL BE DONE DAILY ON SEDIMENT CONTROL MEASURES AND CLEANED OF ANY ACCUMULATED SILT AS REQUIRED. THE DISPOSER WILL BE DEPOSED OFF SITE AS PER THE REQUIREMENTS OF THE CONTRACT.
8. SEDIMENT CONTROL BARRIERS MAY ONLY BE REMOVED TEMPORARILY WITH APPROVAL OF CONTRACT ADMINISTRATOR TO ACCOMMODATE CONSTRUCTION OPERATIONS. ALL AFFECTED BARRIERS MUST BE REINSTATED AT NIGHT WHEN CONSTRUCTION IS COMPLETED. NO REMOVAL WILL OCCUR IF THERE IS A SIGNIFICANT RAINFALL EVENT ANTICIPATED (>10mm) UNLESS A NEW DEVICE HAS BEEN INSTALLED TO PROTECT EXISTING STORM AND SANITARY SEWER SYSTEMS, OR DOWNSTREAM WATERCOURSES.
9. NO REPLETING OR CLEANING OF EQUIPMENT IS PERMITTED NEAR ANY EXISTING WATERWAY.
10. CONTRACTOR SHALL REMOVE SEDIMENT CONTROL MEASURES WHEN IN THE PRESENCE OF THE CONTRACT ADMINISTRATOR. THE MEASURES ARE NO LONGER REQUIRED. NO CONTROL MEASURES SHALL BE PERMANENTLY REMOVED WITHOUT PRIOR WRITTEN AUTHORIZATION FROM THE CONTRACT ADMINISTRATOR.
11. THE CONTRACTOR SHALL PERIODICALLY, OR WHEN REQUESTED BY THE CONTRACT ADMINISTRATOR, CLEAN UP ACCUMULATED SEDIMENTS AS REQUIRED.
12. THE CONTRACTOR SHALL IMMEDIATELY REPORT TO THE ENGINEER ANY ACCIDENTAL DISCHARGES OF SEDIMENT MATERIAL INTO THE WATERCOURSE. APPROPRIATE RESPONSE MEASURES, INCLUDING ANY REPAIRS TO EXISTING CONTROL MEASURES OR THE IMPLEMENTATION OF ADDITIONAL CONTROL MEASURES, SHALL BE CARRIED OUT BY THE CONTRACTOR WITHOUT DELAY.
13. CONTRACTOR SHALL INSTALL MUD MATS AT ALL ENTRANCES TO THE SITE.

1	REVISED AS PER NEW SITE PLAN AND CITY COMMENTS	MJS	AMP	21.03.24
0	ISSUED FOR SPA	MJS	AMP	19.12.13
Revision		By	App'd.	YY.MM.DD
File Name:	160401331_D82.dwg	MJS	AMP	MJS
		Dwn.	Chkd.	Dgn.
				YY.MM.DD

Permit/Seal

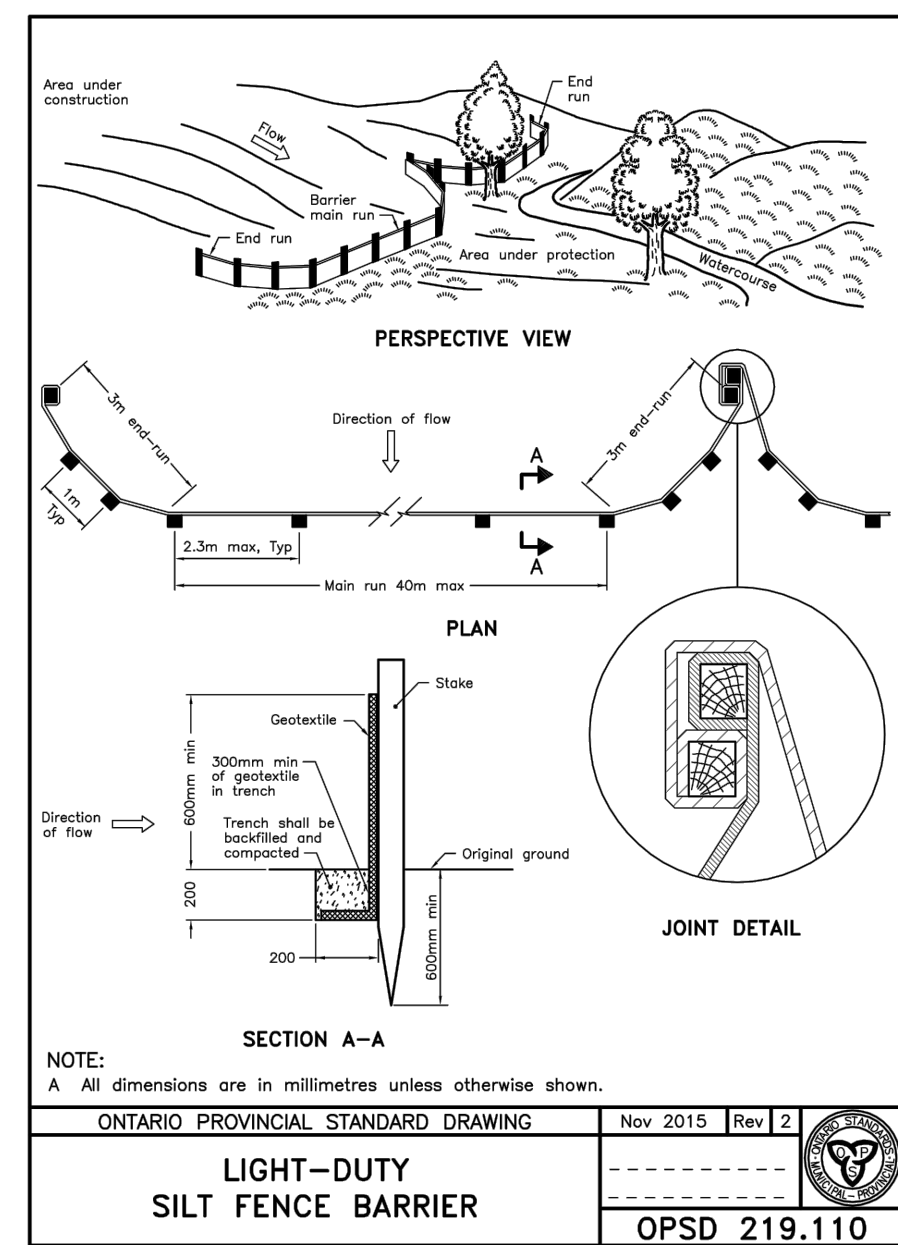
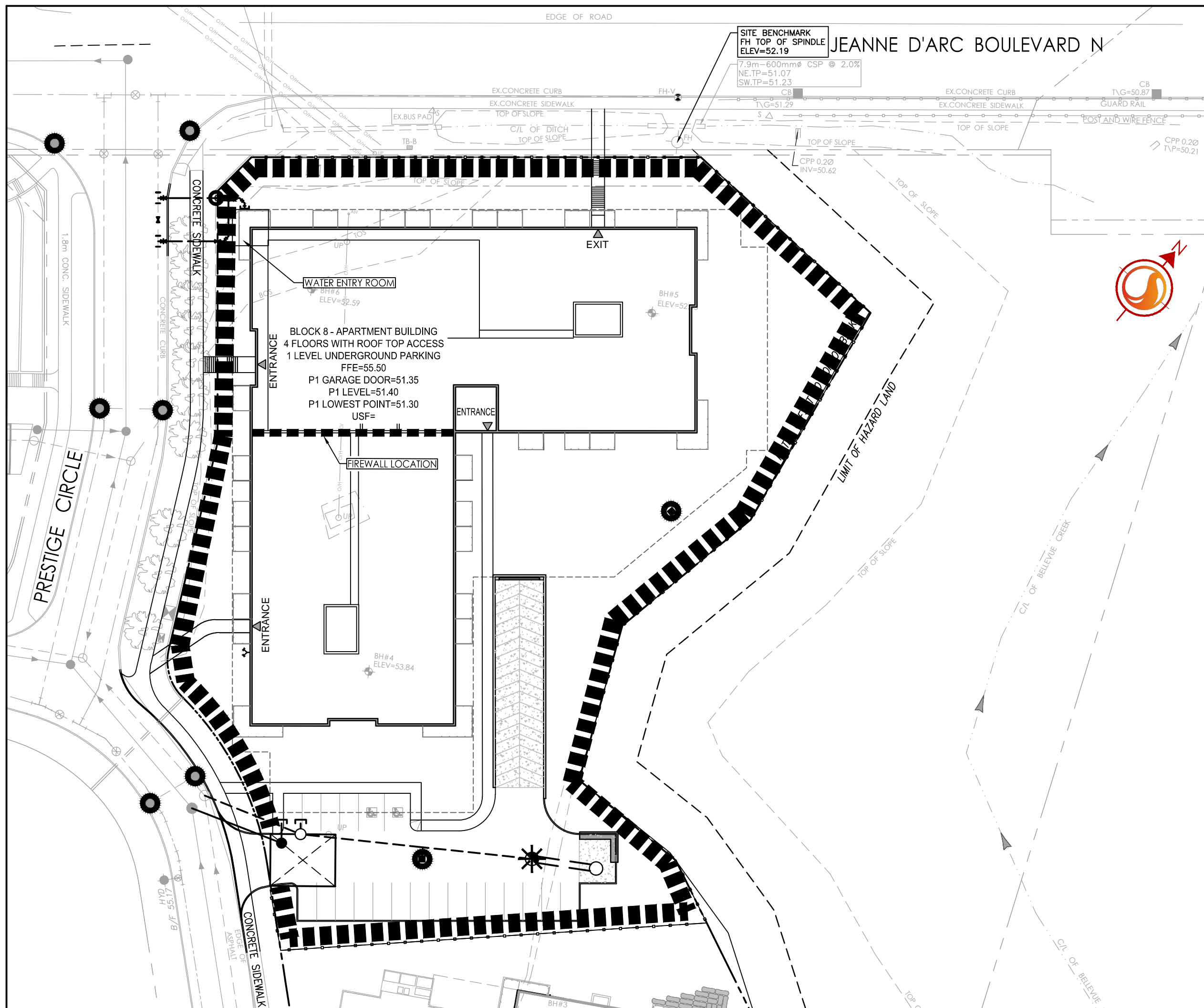
Client/Project

BRIGIL  
PETRIE'S LANDING II  
BLOCK 8  
8466 JEANNE D'ARC BOULEVARD  
OTTAWA, ON, CANADA

Title

EROSION CONTROL PLAN  
AND DETAIL SHEET

Project No.	Scale	0	5	15	25m
160401331	1:500				
Drawing No.	Sheet	Revision			
EC/DS-1	4 of 6	1			



ONTARIO PROVINCIAL STANDARD DRAWING Nov 2015 Rev 2

LIGHT-DUTY SILT FENCE BARRIER

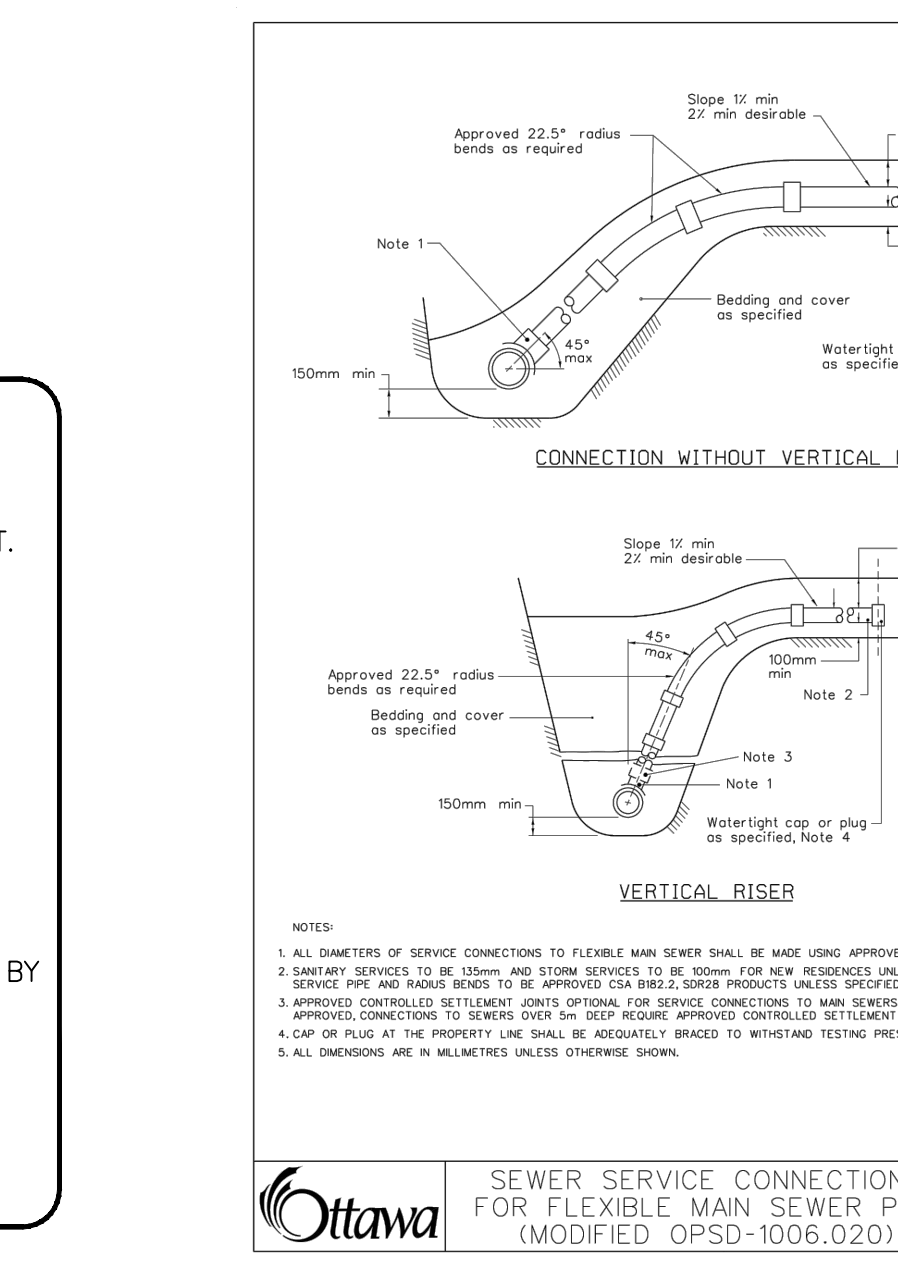
OPSD 219.110

FLEXSTORM P/Ns 62MHDRFX & 62MHDRFXP  
RD INLET TYPE RAISED CAST IRON FRAME AND ROUND GRATE

Pure Frame with Flex Bag	Field Hole Dimensions	Flexstorm P/Ns	Flexstorm Ratings (80%)	Flexstorm Ratings (90%)	Pure Frame with Flex Bag				
ASD P/N	Flexstorm Item Code	A	B	Flow Capacity (m³/hr)	PCPC Flow Rate (GPM)	Bypass (GPM)	ASD P/N	Flexstorm Item Code	
62MHDRFX	FHD-200-200-FX	20	20	21.3	20.3	0.8	1.4	25	62MHDRFXP
62MHDRFX	FHD-250-250-FX	25	25	23.3	22.3	0.7	1.3	25	62MHDRFXP
62MHDRFX	FHD-300-300-FX	30	30	25.3	24.3	0.6	1.4	25	62MHDRFXP
62MHDRFX	FHD-350-350-FX	35	35	27.3	26.3	0.5	1.4	25	62MHDRFXP
62MHDRFX	FHD-400-400-FX	40	40	29.3	28.3	0.4	1.4	25	62MHDRFXP
62MHDRFX	FHD-450-450-FX	45	45	31.3	30.3	0.3	1.4	25	62MHDRFXP
62MHDRFX	FHD-500-500-FX	50	50	33.3	32.3	0.2	1.4	25	62MHDRFXP
62MHDRFX	FHD-550-550-FX	55	55	35.3	34.3	0.1	1.4	25	62MHDRFXP
62MHDRFX	FHD-600-600-FX	60	60	37.3	36.3	0.0	1.4	25	62MHDRFXP
62MHDRFX	FHD-650-650-FX	65	65	39.3	38.3	0.0	1.4	25	62MHDRFXP
62MHDRFX	FHD-700-700-FX	70	70	41.3	40.3	0.0	1.4	25	62MHDRFXP
62MHDRFX	FHD-750-750-FX	75	75	43.3	42.3	0.0	1.4	25	62MHDRFXP
62MHDRFX	FHD-800-800-FX	80	80	45.3	44.3	0.0	1.4	25	62MHDRFXP
62MHDRFX	FHD-850-850-FX	85	85	47.3	46.3	0.0	1.4	25	62MHDRFXP
62MHDRFX	FHD-900-900-FX	90	90	49.3	48.3	0.0	1.4	25	62MHDRFXP
62MHDRFX	FHD-950-950-FX	95	95	51.3	50.3	0.0	1.4	25	62MHDRFXP
62MHDRFX	FHD-1000-1000-FX	100	100	53.3	52.3	0.0	1.4	25	62MHDRFXP

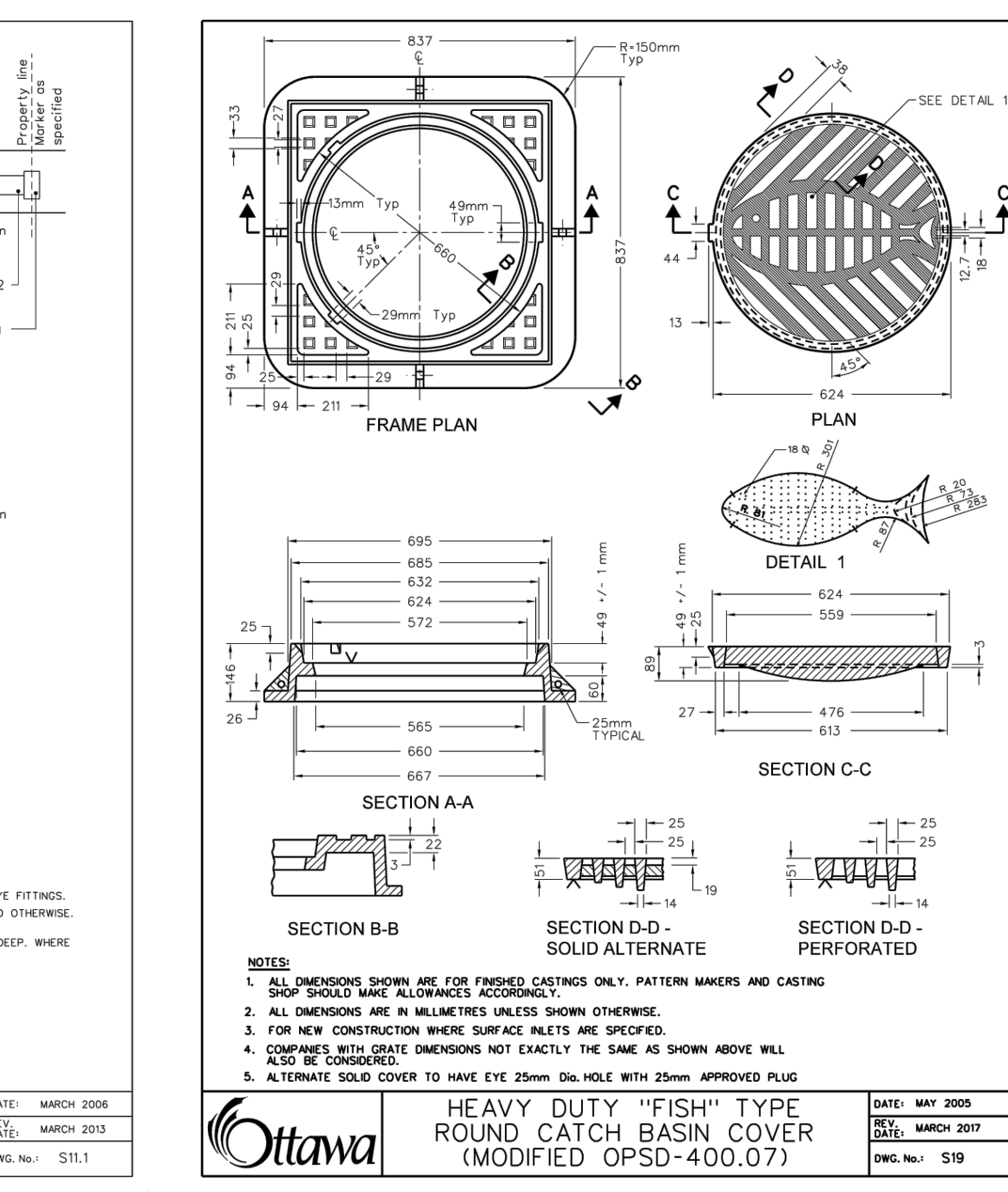
NOTES:  
1. RATINGS SHOWN ARE FOR STANDARD 22" BAG DEPTH. 'SHORT' 12" DEPTH BAGS ARE AVAILABLE WITH -S SUFFIX; RATINGS REDUCED BY -50%.  
2. THE FOLLOWING REQUIRES ADDITIONAL REVIEW  
-GRATES WITH EXTENDED BOTTOMS  
-ANY OBSTRUCTED INLET OPENINGS

FLEXSTORM PURE INLET FILTERS  
ALL PRODUCTS MANUFACTURED BY INLET & PIPE PROTECTION, INC. A DIVISION OF ADS, INC.  
WWW.INLETFILTERS.COM  
(866) 287-8653 PH  
(630) 355-3477 FX  
INFO@INLETFILTERS.COM



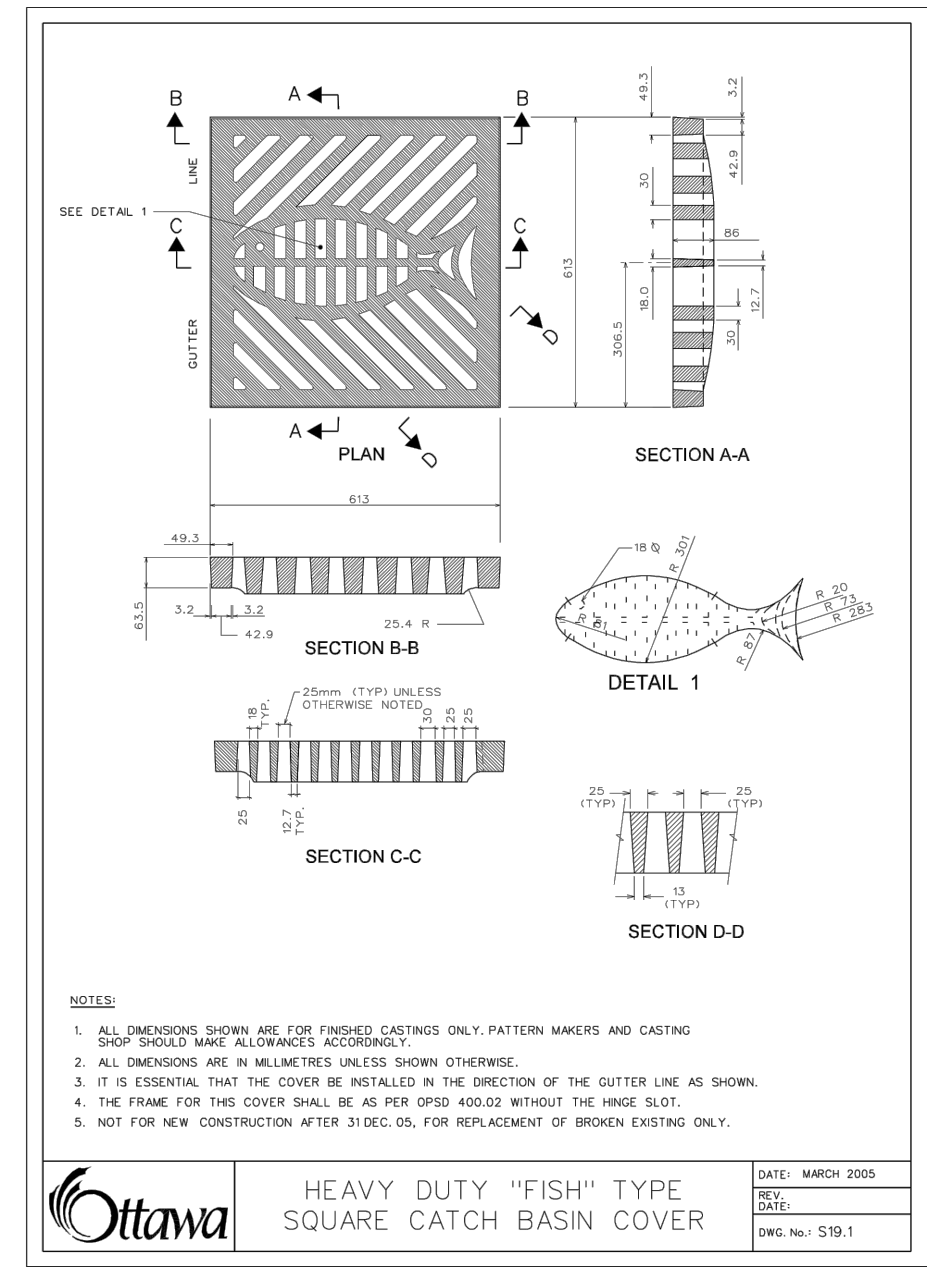
SEWER SERVICE CONNECTIONS FOR FLEXIBLE MAIN SEWER PIPE (MODIFIED OPSD-1006.020)

Ottawa DATE: MARCH 2020  
SCALE: MARCH 2020  
DWG. NO.: S111



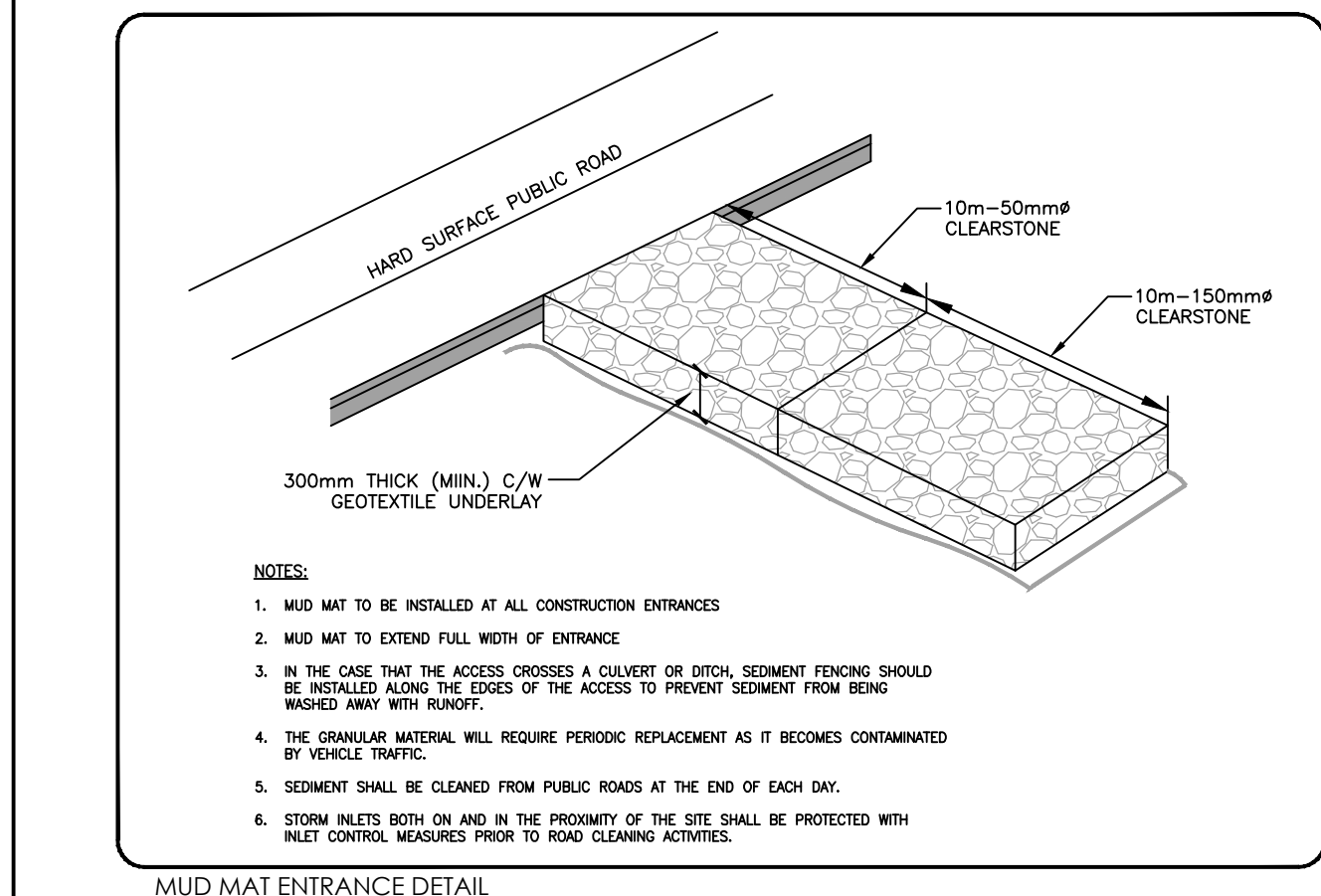
HEAVY DUTY "FISH" TYPE ROUND CATCH BASIN COVER (MODIFIED OPSD-400.07)

Ottawa DATE: MARCH 2020  
SCALE: MARCH 2020  
DWG. NO.: S19



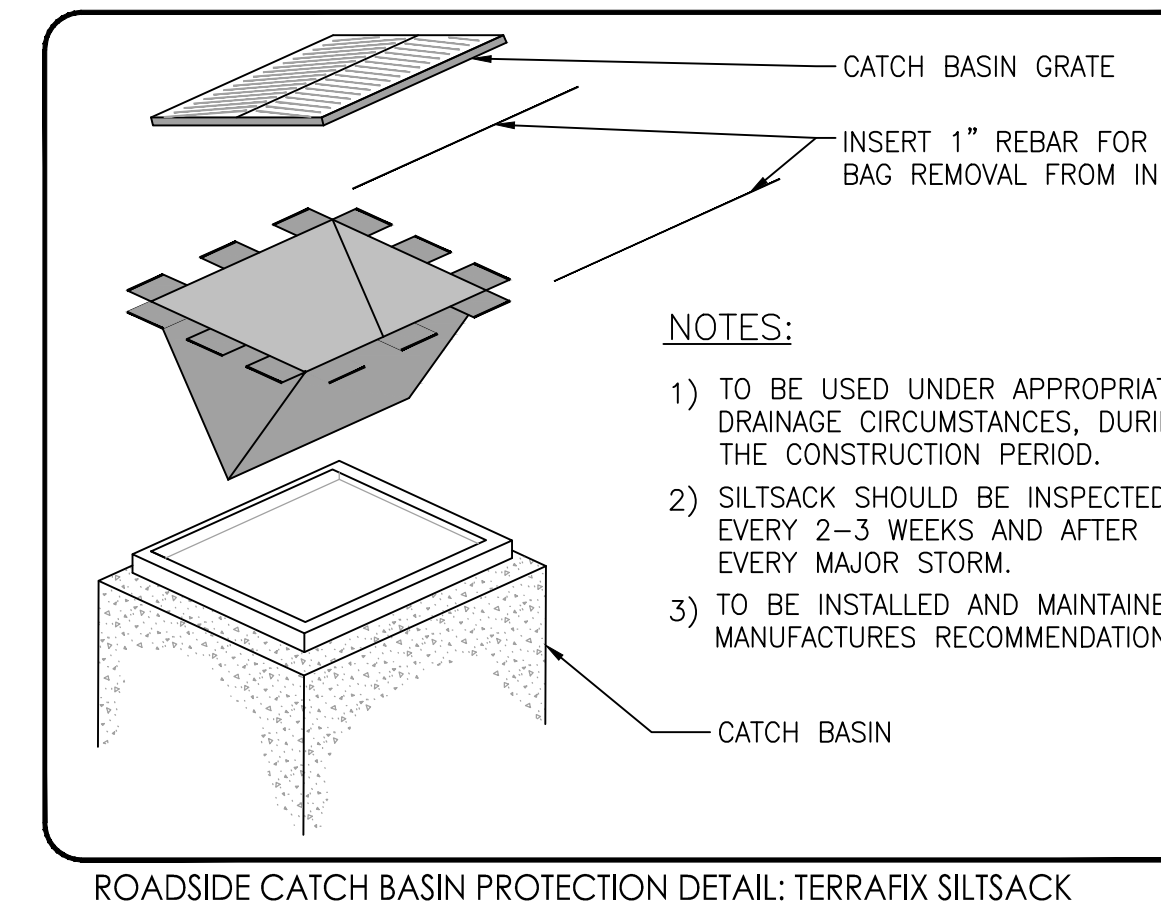
HEAVY DUTY "FISH" TYPE SQUARE CATCH BASIN COVER

Ottawa DATE: MARCH 2020  
SCALE: MARCH 2020  
DWG. NO.: S19.1



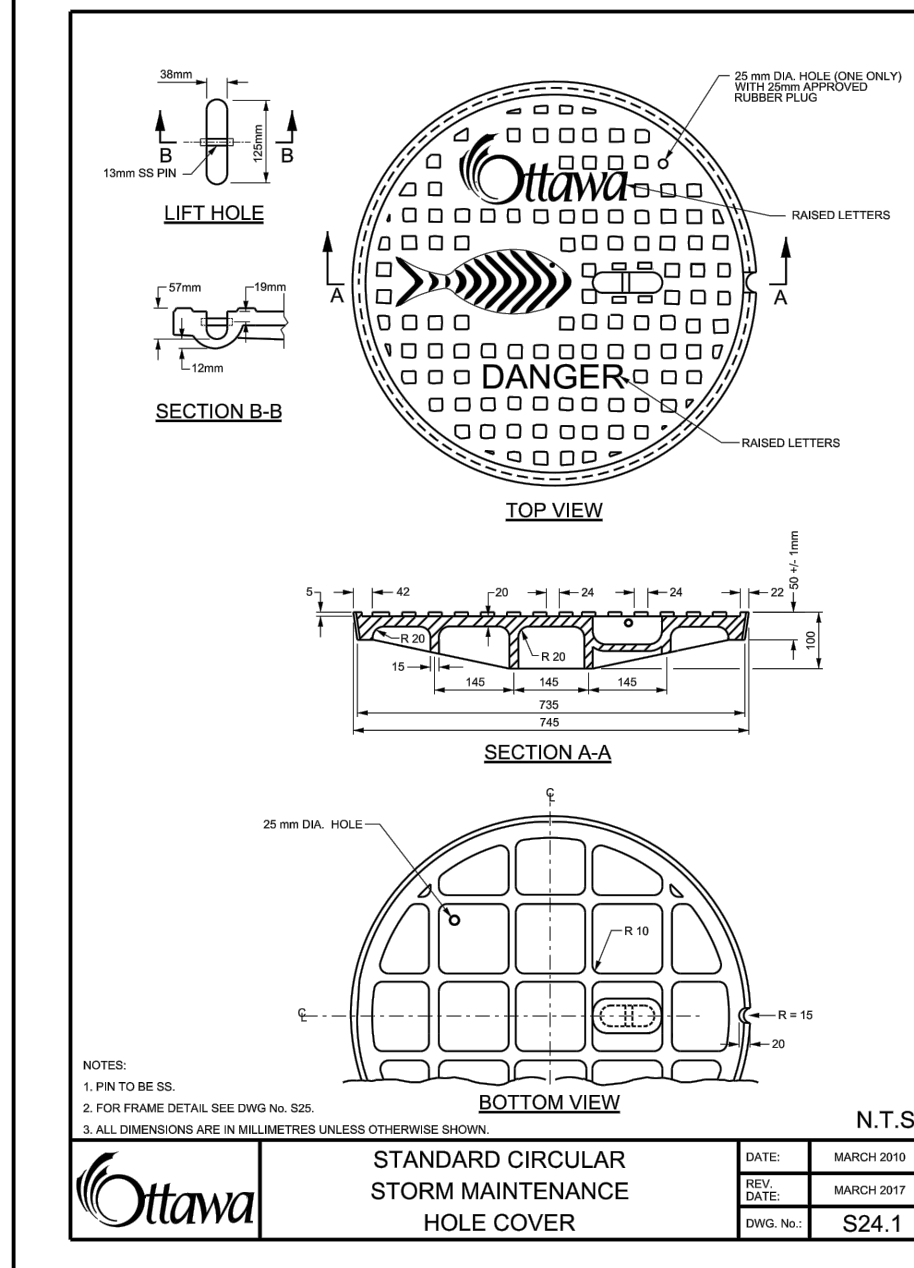
MUD MAT ENTRANCE DETAIL SCALE: N.T.S.

Ottawa DATE: MARCH 2020  
SCALE: MARCH 2020  
DWG. NO.: S24.1



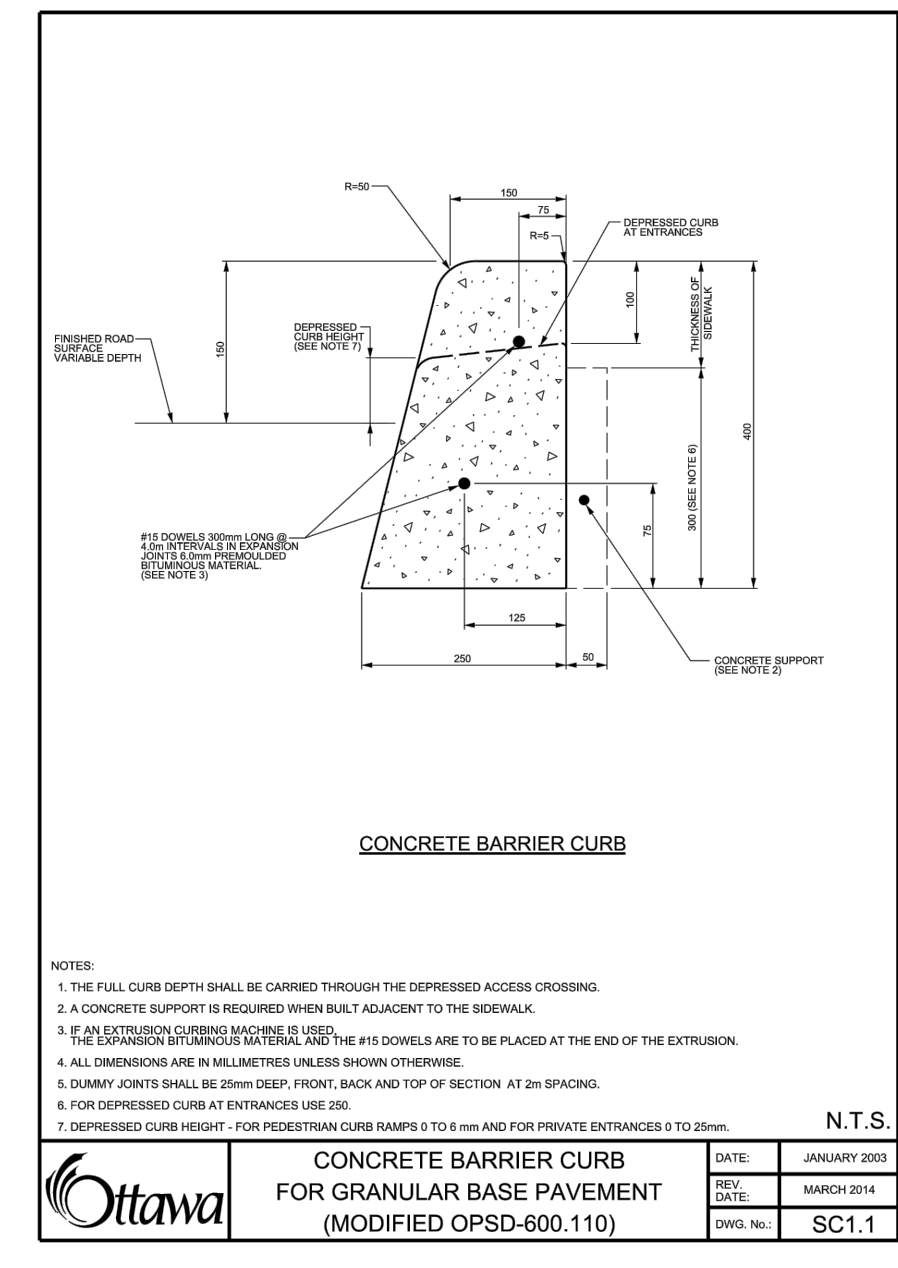
ROADSIDE CATCH BASIN PROTECTION DETAIL: TERRAFIX SILTSACK SCALE: N.T.S.

Ottawa DATE: MARCH 2020  
SCALE: MARCH 2020  
DWG. NO.: SC1.1



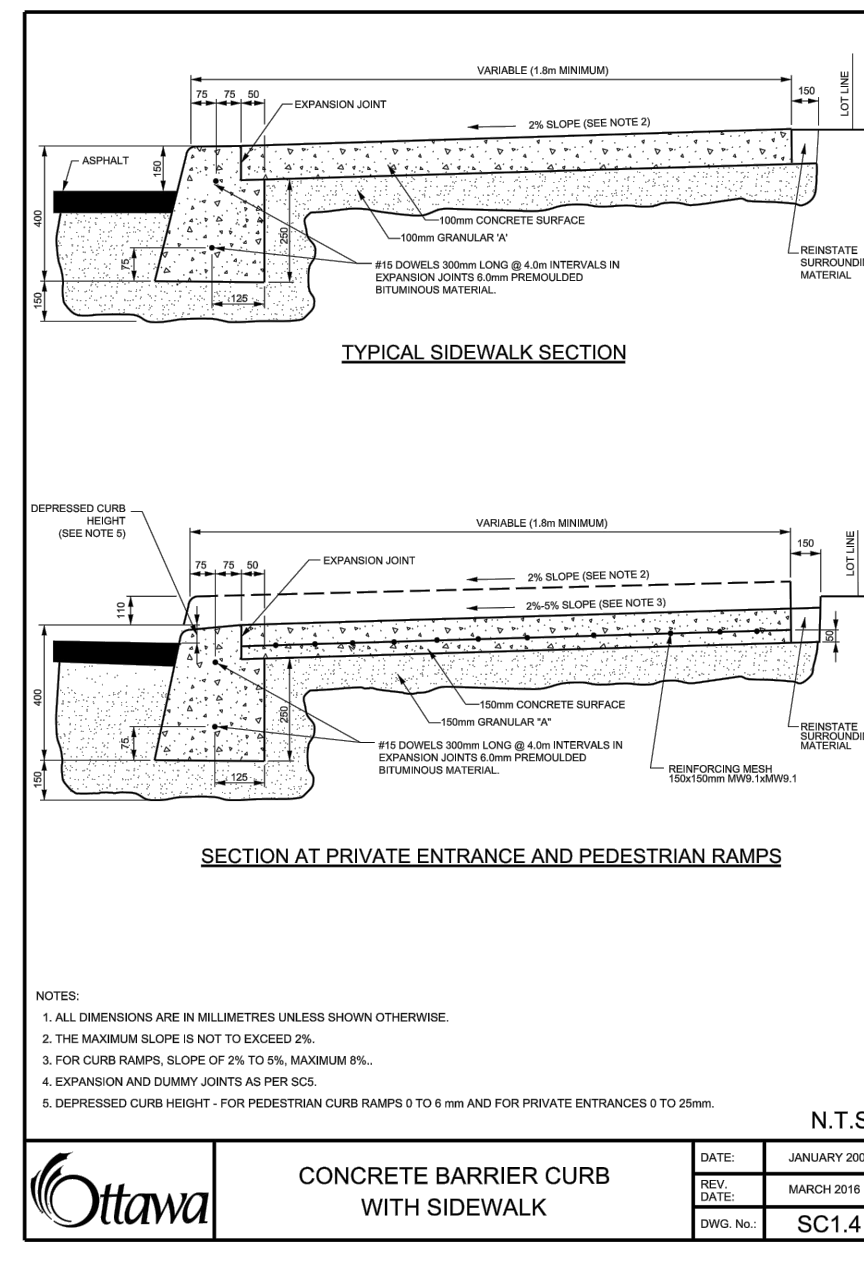
STANDARD CIRCULAR STORM MAINTENANCE HOLE COVER

Ottawa DATE: MARCH 2020  
SCALE: MARCH 2020  
DWG. NO.: S24.1



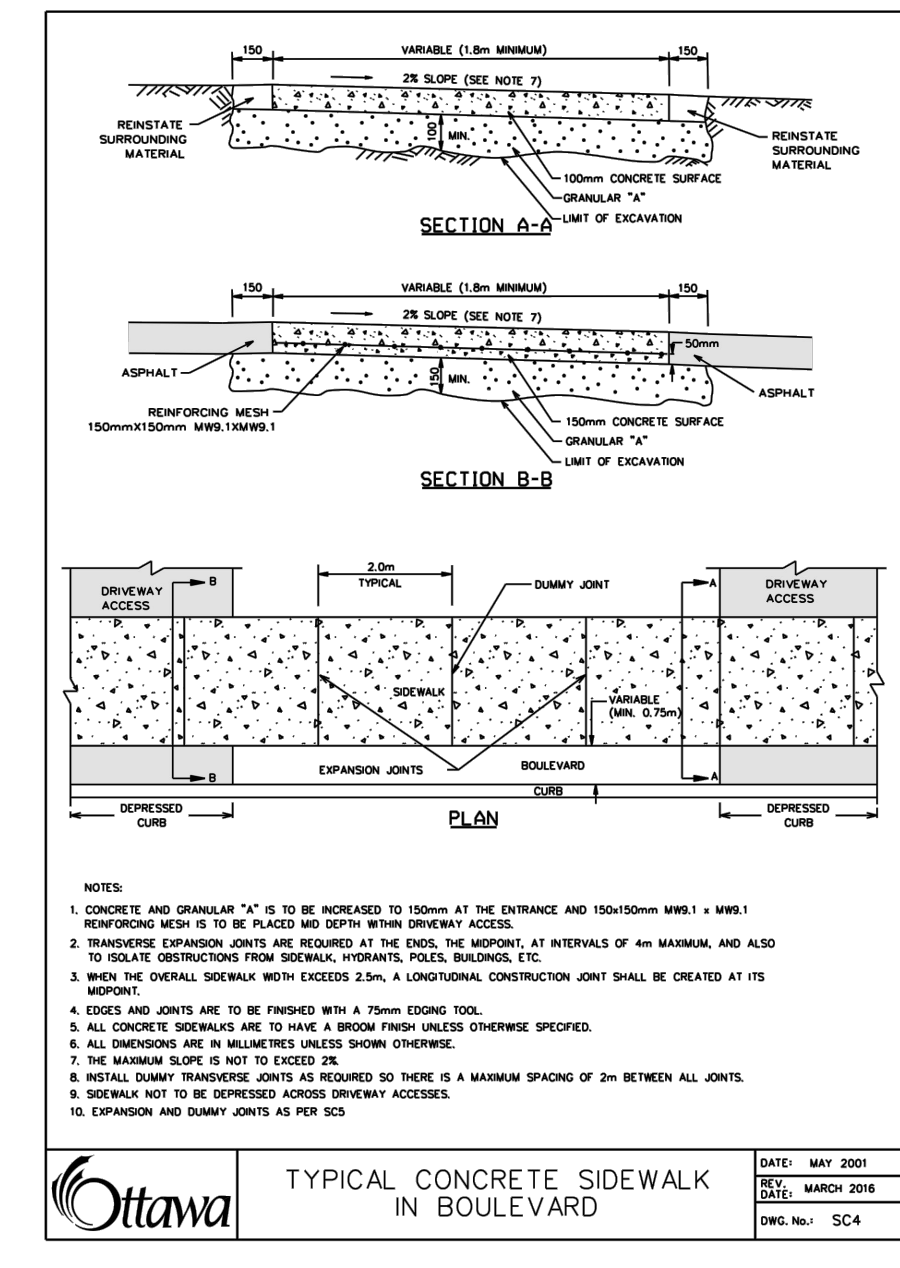
CONCRETE BARRIER CURB FOR GRANULAR BASE PAVEMENT (MODIFIED OPSD-600.110)

Ottawa DATE: JANUARY 2020  
SCALE: MARCH 2020  
DWG. NO.: SC1.1



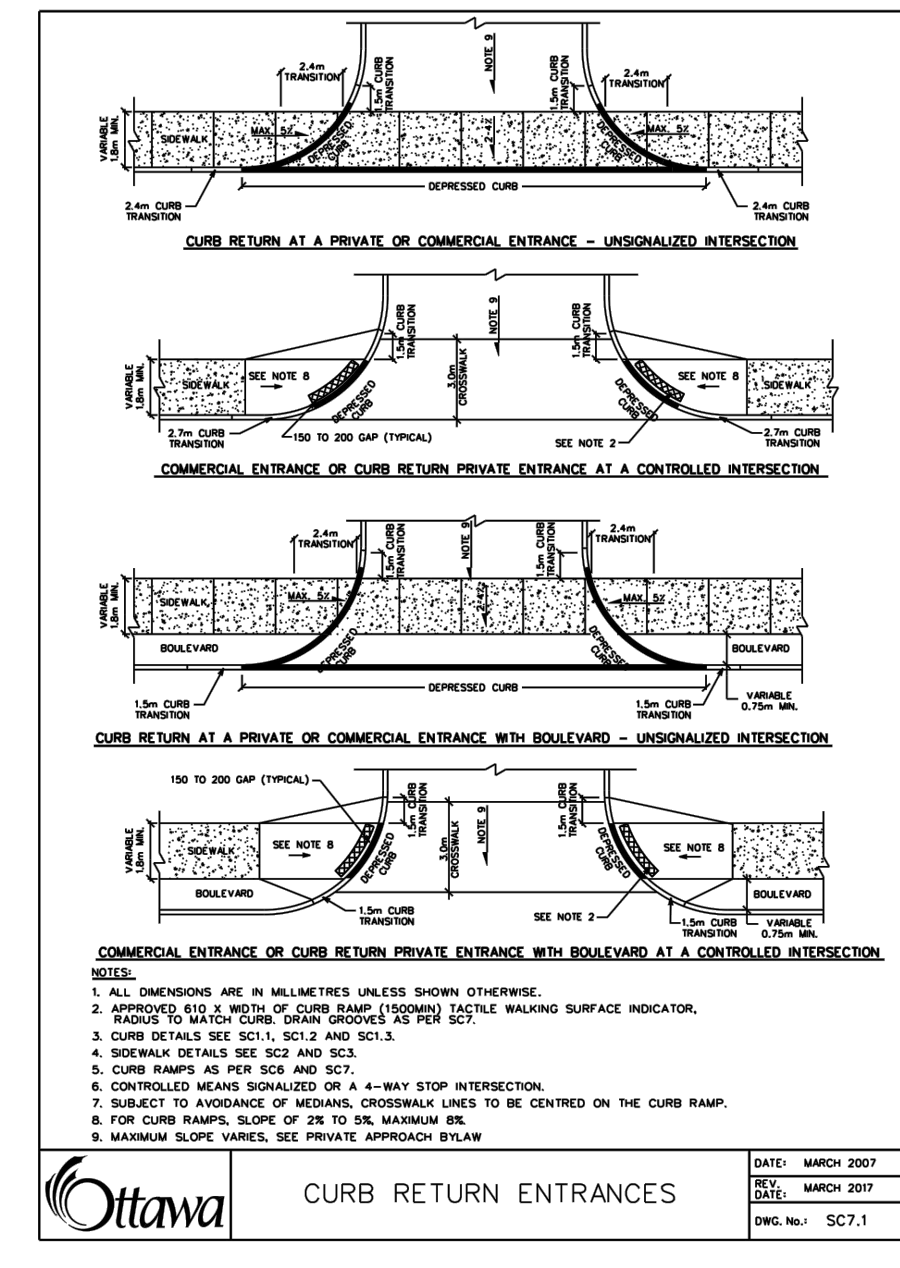
CONCRETE BARRIER CURB WITH SIDEWALK

Ottawa DATE: JANUARY 2020  
SCALE: MARCH 2020  
DWG. NO.: SC1.4



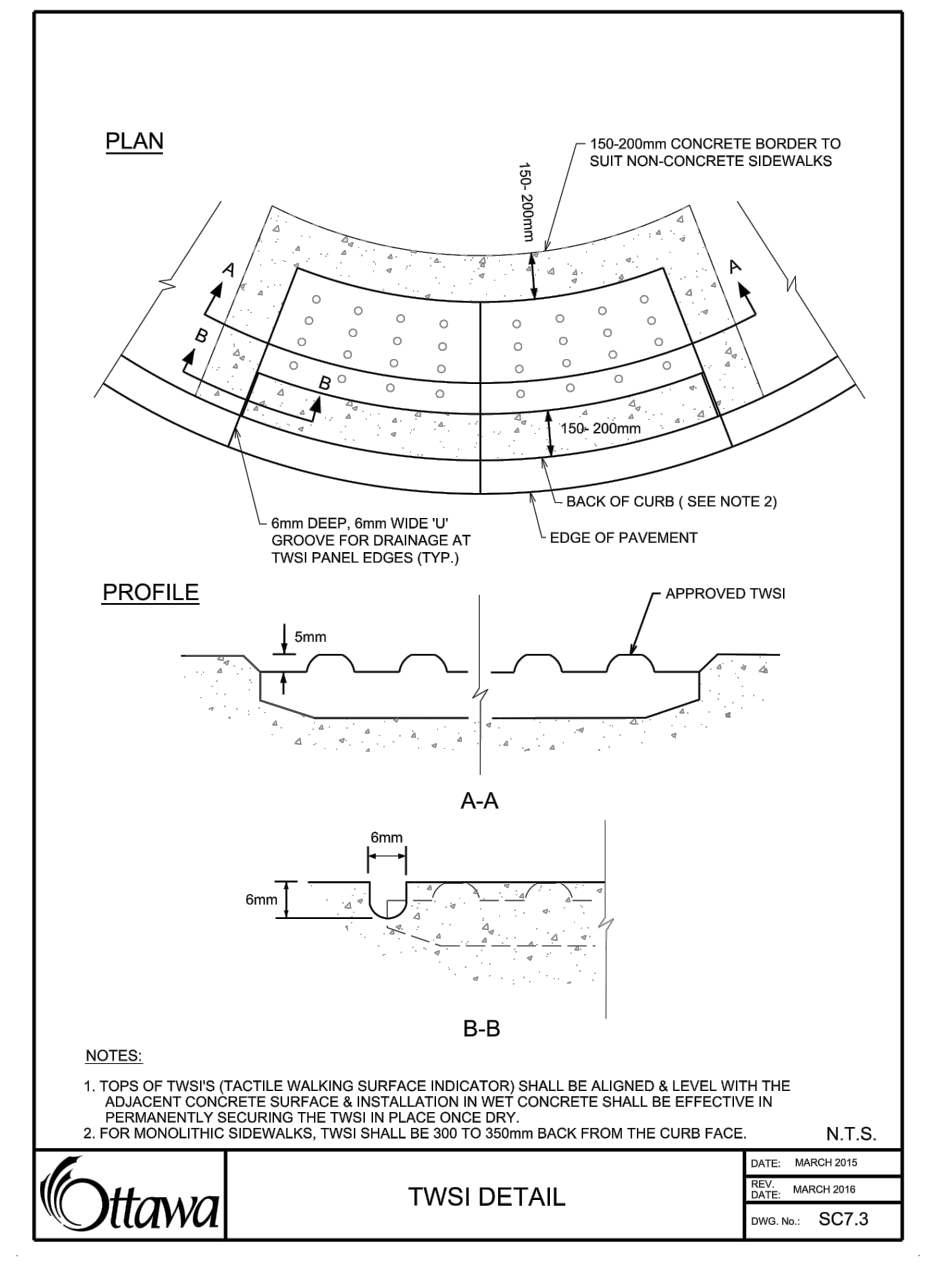
TYPICAL CONCRETE SIDEWALK IN BOULEVARD

Ottawa DATE: MAY 2020  
SCALE: MARCH 2020  
DWG. NO.: SC4



CURB RETURN ENTRANCES

Ottawa DATE: MARCH 2020  
SCALE: MARCH 2020  
DWG. NO.: SC7.1



TWSI DETAIL

Ottawa DATE: MARCH 2020  
SCALE: MARCH 2020  
DWG. NO.: SC7.3