

NOTES GÉNÉRALES / General Notes

- Ces documents d'architecture sont la propriété exclusive de NEUF architecte et ne peuvent être utilisés, reproduits ou copiés sans autorisation écrite préalable. / These architectural documents are the exclusive property of NEUF architecte and cannot be used, copied or reproduced without written pre-authorization.
- Les dimensions apparaissant sur ces documents doivent être vérifiées par l'entrepreneur avant le début des travaux. / All dimensions which appear on the documents must be verified by the contractor before to start the work.
- Veuillez aviser l'architecte de toute dimension erreur et/ou divergence entre ces documents et ceux des autres professionnels. / The architect must be notified of all errors, omissions and discrepancies between these documents and those of the other professionals.
- Les dimensions sur ces documents doivent être lues et non mesurées. / The dimensions on these documents must be read and not measured.

GEOTECHNIQUE / Geotechnical  
**Paterson Group Inc.**  
 154 Colomède Road South Ottawa (Népean), Ontario Canada K2E 7J5  
 T 613 226-7381 www.patersongroup.ca

MÉCANIQUE ÉLECTRIQUE / Mechanical Electrical  
**LCA**  
 15 rue De Vaucourt, unité 6, Gatineau, Québec J8T 8H1  
 T 819 24-8383 www.larouchecaneseau.ca

STRUCTURE / structure  
**qdi**  
 635, boulevard de la Gaspée, gatineau (QC) J8T 8G1  
 T 819 243-4424 lqdi.ca

ARCHITECTURE DE PAYSAGE / Landscape Architect  
**Levstek Consultants**  
 5971 Hugh Crockett, Ottawa ON K0K 2W0  
 T 613 825 0518 larocquelevstek.com

CIVIL / Civil  
**Stantec**  
 400 - 1331 Clyde Avenue, Ottawa ON K2C 3G4  
 T 613 724-6337 krs.albor@stantec.com

ARCHITECTES / Architect  
**NEUF architect(e)s** SENCRL  
 630, St-Jul, Rensselaire C. 32e étage, Montréal QC H3B 1S6  
 T 514 847 1117 NEUFArchitectes.com

SCEAU / Seal



CLIENT / Client  
**brigi**

OUVRAGE / Project  
**PETRIES II BLOCK 8**  
 112 units  
 EMPLACEMENT / Location NO PROJET No.  
 ORLEANS, ON 10498.02

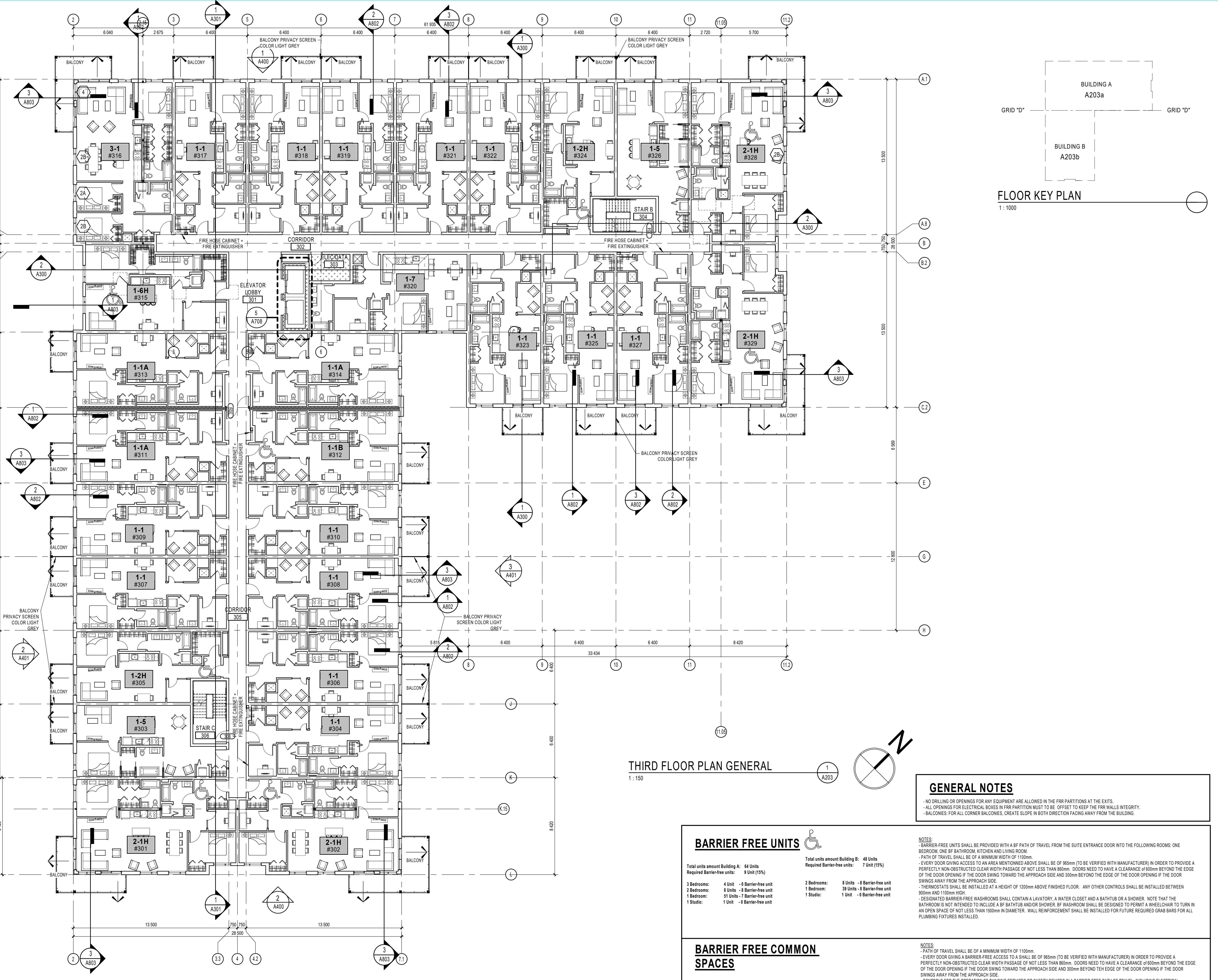
NO	RÉVISION	DATE (aa-mm-ii)
A	Issue for Coordination	2021-07-16
B	Issued for Coordination	2021-07-28
C	Issued for Coordination	2021-08-05
D	Issued for Coordination	2021-08-13
E	Issued for Permit	2021-08-30
F	Issued for Coordination	2021-09-08
G	Issued for Coordination	2021-09-15
H	Issued for SPA	2021-09-23

DESSIN PAR / Drawn by  
 PM  
 DATE (aa mm ii)  
 06/14/17  
 TITRE DU DESSIN / Drawing Title  
**THIRD FLOOR PLAN GENERAL**

VERIFIÉ PAR / Checked by  
 Paul McQ.  
 ÉCHELLE / Scale  
 As indicated

RÉVISION / Revision NO. DESSIN / Dwg Number  
**H A203**

#18062



**FLOOR KEY PLAN**  
 1: 1000

**THIRD FLOOR PLAN GENERAL**  
 1: 150

**GENERAL NOTES**

- NO DRILLING OR OPENINGS FOR ANY EQUIPMENT ARE ALLOWED IN THE FRR PARTITIONS AT THE EXITS.
- ALL OPENINGS FOR ELECTRICAL BOXES IN FRR PARTITION MUST BE OFFSET TO KEEP THE FRR WALLS INTEGRITY.
- BALCONIES: FOR ALL CORNER BALCONIES, CREATE SLOPE IN BOTH DIRECTION FACING AWAY FROM THE BUILDING.

**BARRIER FREE UNITS**

Total units amount Building A:	84 Units	Total units amount Building B:	48 Units
Required Barrier-free units:	8 Unit (15%)	Required Barrier-free units:	7 Unit (15%)

**NOTES**

- BARRIER-FREE UNITS SHALL BE PROVIDED WITH A BF PATH OF TRAVEL FROM THE SUITE ENTRANCE DOOR INTO THE FOLLOWING ROOMS: ONE BEDROOM, ONE BF BATHROOM, KITCHEN AND LIVING ROOM.
- PATH OF TRAVEL SHALL BE OF A MINIMUM WIDTH OF 1100mm.
- EVERY DOOR GIVING ACCESS TO AN AREA MENTIONED ABOVE SHALL BE OF 965mm (TO BE VERIFIED WITH MANUFACTURER) IN ORDER TO PROVIDE A PERFECTLY NON-OBSTRUCTED CLEAR WIDTH PASSAGE OF NOT LESS THAN 860mm. DOORS NEED TO HAVE A CLEARANCE OF 600mm BEYOND THE EDGE OF THE DOOR OPENING IF THE DOOR SWING TOWARD THE APPROACH SIDE AND 300mm BEYOND THE EDGE OF THE DOOR OPENING IF THE DOOR SWINGS AWAY FROM THE APPROACH SIDE.
- THERMOSTATS SHALL BE INSTALLED AT A HEIGHT OF 1200mm ABOVE FINISHED FLOOR. ANY OTHER CONTROLS SHALL BE INSTALLED BETWEEN 900mm AND 1100mm HIGH.
- DESIGNATED BARRIER/FREE WASHROOMS SHALL CONTAIN A LAVATORY, A WATER CLOSET AND A BATHTUB OR A SHOWER. NOTE THAT THE BATHTUB IS NOT INTENDED TO INCLUDE A BF BATHTUB AND/OR SHOWER. BF WASHROOM SHALL BE DESIGNED TO PERMIT A WHEELCHAIR TO TURN IN AN OPEN SPACE OF NOT LESS THAN 1500mm IN DIAMETER. WALL REINFORCEMENT SHALL BE INSTALLED FOR FUTURE REQUIRED GRAB BARS FOR ALL PLUMBING FIXTURES INSTALLED.

**BARRIER FREE COMMON SPACES**

Total units amount Building A:	84 Units	Total units amount Building B:	48 Units
Required Barrier-free units:	8 Unit (15%)	Required Barrier-free units:	7 Unit (15%)

**NOTES**

- PATH OF TRAVEL SHALL BE OF A MINIMUM WIDTH OF 1100mm.
- EVERY DOOR GIVING A BARRIER-FREE ACCESS TO A SHALL BE OF 965mm (TO BE VERIFIED WITH MANUFACTURER) IN ORDER TO PROVIDE A PERFECTLY NON-OBSTRUCTED CLEAR WIDTH PASSAGE OF NOT LESS THAN 860mm. DOORS NEED TO HAVE A CLEARANCE OF 600mm BEYOND THE EDGE OF THE DOOR OPENING IF THE DOOR SWING TOWARD THE APPROACH SIDE AND 300mm BEYOND THE EDGE OF THE DOOR OPENING IF THE DOOR SWINGS AWAY FROM THE APPROACH SIDE.
- CONTROLS FOR THE OPERATION OF BUILDING SERVICES OR SAFETY DEVICES IN A BARRIER-FREE PATH OF TRAVEL, INCLUDING ELECTRICAL SWITCHES, THERMOSTATS AND INTERCOM SWITCHES SHALL BE MOUNTED:
  - i) 1200 mm ABOVE THE FINISHED FLOOR IN THE CASE OF A THERMOSTAT OR A MANUAL PULL STATION, AND
  - ii) NOT LESS THAN 900 mm AND NOT MORE THAN 1100 mm ABOVE THE FINISHED FLOOR, IN THE CASE OF ALL OTHER CONTROLS.

C:\Fichiers Revit\Local\A203\_10498.02\_ARC\_INT\_R20\_pmqqueen.rvt