

TOPOGRAPHIC PLAN OF SURVEY OF

PART OF LOTS 2, 3, 4, 5, 6 AND 7 REGISTERED PLAN 101126 AND PART OF LOT A REGISTERED PLAN 116274 CITY OF OTTAWA

Scale 1: 150

FARLEY, SMITH & DENIS SURVEYING LTD. 2018

Metric Note Distances and coordinates on this plan are in metres and can be converted to feet by dividing by 0.3048.

Distance Note Distances shown on this plan are ground distances and can be converted to grid distances by multiplying by the combined scale factor of 0.99945.

Bearing Note Bearings are grid and are derived from the northerly limit of Euclid Avenue having a bearing of N 58° 54' 20" E as shown on Plan 4R-19507. Bearings are referred to the Central Meridian (76°30' West Longitude) MTM NAD-83 (Original) Zone 9.

For bearing comparisons, a rotation of 0°38'40" counter-clockwise was applied to bearings on P1, P2, P3, P6, P7, P8 and P10.

For bearing comparisons, a rotation of 0°48'16" counter-clockwise was applied to bearings on P4.

For bearing comparisons, a rotation of 0°03'00" clockwise was applied to bearings on P9.

Elevation Notes 1. Elevations shown are geodetic and are referred to Geodetic Datum CGVD-1978. 2. Elevations are derived from a site benchmark shown on a plan of survey by (1692) dated May 20th, 2016 having a published elevation of 76.87 metres. (FSD File No. 116-16.) 3. It is the responsibility of the user of this information to verify that the job benchmark has not been altered or disturbed and that it's relative elevation and description agrees with the information shown on this drawing.

Utility Notes 1. This drawing cannot be accepted as acknowledging all of the utilities and it will be the responsibility of the user to contact the respective utility authorities for confirmation. 2. Only visible surface utilities were located. 3. Underground utility data derived from City of Ottawa utility sheets reference H-12-11, plan no. 2538 sheet 7 of 7, drawing 11617p&pi0 and drawing 11617p&pi6. 4. Sanitary and storm sewer grades and inverts were compiled from field measurement and City of Ottawa utility sheets. 5. A field location of underground plan by the pertinent utility authority is mandatory before any work involving breaking ground, probing, excavating etc.

Notes & Legend

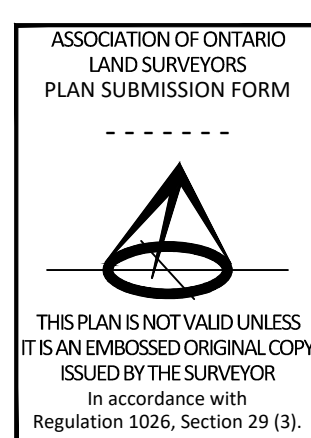
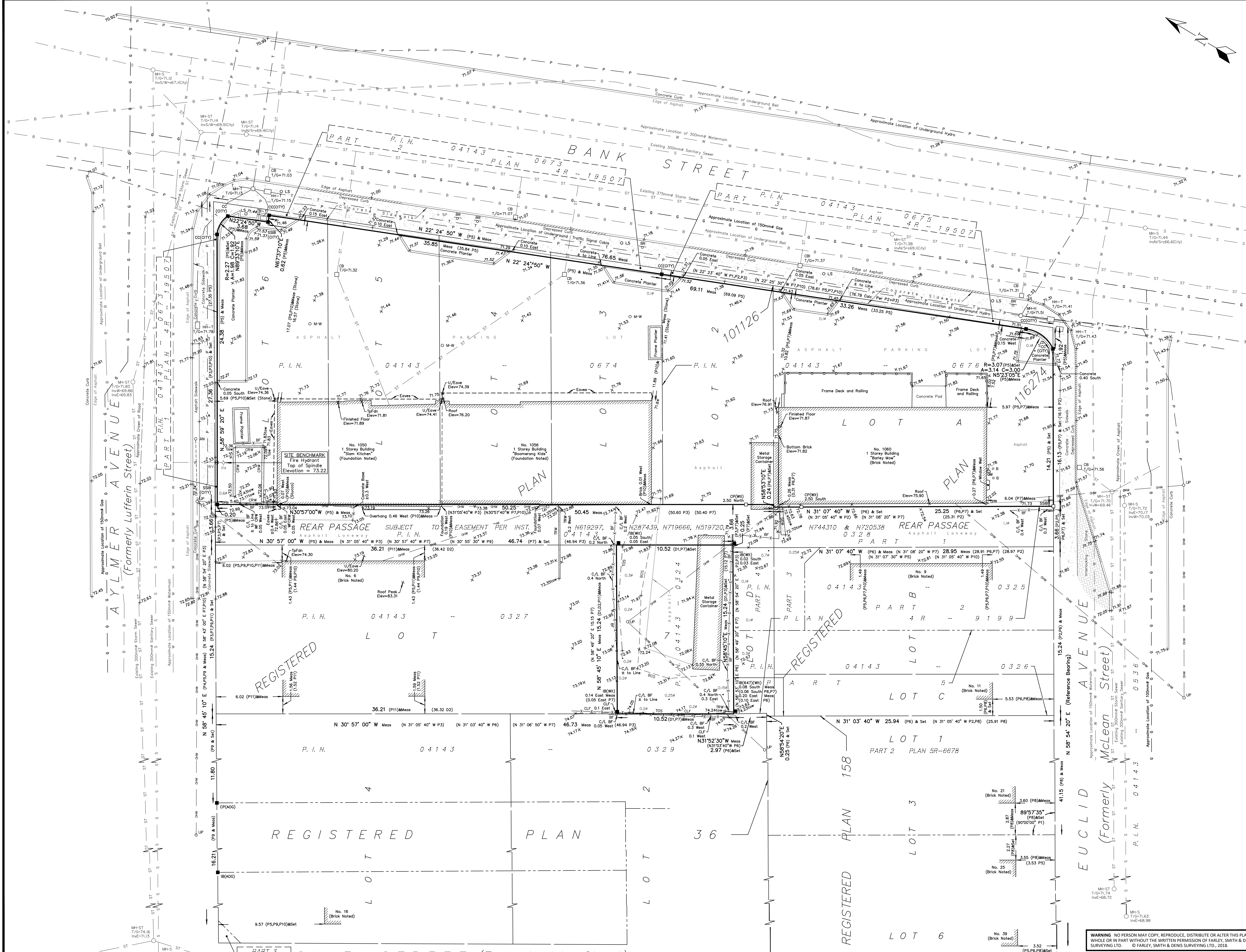
Table with 2 columns: Denotes (symbols) and Survey Monument Planted (descriptions). Includes symbols for SSB, IB, CC, CP, Wit, Meas, (P1)-(P7), (P8)-(P10), (D1)-(D2), MH-ST, MH-T, ST, S, W, OW, U, T, G, CP, AN, LS, BS, PH, WV, SP, TB-T, B, S, M-W, OF, CRW, SRW, TRW, WF, C/L, U/Eave, TOS, Elev, +65.00, +65.00, Deciduous Tree.

Surveyor's Certificate I certify that: 1. This survey and plan are correct and in accordance with the Surveys Act, the Surveyors Act and the Regulations made under them. 2. The survey was completed on the 11th day of September, 2018.

Date Daniel Robinson Ontario Land Surveyor

FARLEY, SMITH & DENIS SURVEYING LTD. ONTARIO LAND SURVEYORS CANADA LAND SURVEYORS

190 COLONNADE ROAD, OTTAWA, ONTARIO K2E 7J5 TEL: (613) 727-8226 FAX: (613) 727-1826



ASSOCIATION OF ONTARIO LAND SURVEYORS PLAN SUBMISSION FORM THIS PLAN IS NOT VALID UNLESS IT IS AN EMBOSSED ORIGINAL COPY ISSUED BY THE SURVEYOR In accordance with Regulation 1026, Section 23 (3).

WARNING: NO PERSON MAY COPY, REPRODUCE, DISTRIBUTE OR ALTER THIS PLAN IN WHOLE OR IN PART WITHOUT THE WRITTEN PERMISSION OF FARLEY, SMITH & DENIS SURVEYING LTD. © FARLEY, SMITH & DENIS SURVEYING LTD., 2018.