

#	DESCRIPTION
1	BLACK CORRUGATED STEEL SIDING
2	BALCONY PRIVACY SCREENS - PALE GREY CORRUGATED STEEL ON CURVED SIDE, WHITE METALLIC PANEL ON FRONT FACE AND BLACK CORRUGATED PANEL ON FLAT SIDE
3	BLACK ALUMINIUM RAILING
4	HYBRID ALUMINIUM/UPVC WINDOW AND PATIO DOORS, BLACK FRAME
5	EXPOSED CONCRETE BALCONY
6	FASCIA AND FACE OF BALCONY SLAB IN WHITE METALLIC PANELS
7	ALUMINIUM CURTAIN WALL WITH CLEAR GLASS AND GREY-COLORED SPANREL GLASS
8	DARK GREY SMOOTH ALUMINIUM PANEL
9	DARK GREY BRICK MASONRY
10	ALUMINIUM GUARDRAIL WITH CLEAR GLASS PANELS
11	ALUMINIUM CURTAIN WALL WITH CLEAR GLASS AND GREY-COLORED SPANREL GLASS

THE CONTRACTOR IS RESPONSIBLE FOR THE VERIFICATION AND COORDINATION OF ALL CONSTRUCTION DIMENSIONS AND FOR THE IMPLEMENTATION ON THE SITE. HE MUST ADVISE THE ARCHITECT OF ANY IRREGULARITY, OMISSION OR DIFFERENCE BETWEEN THESE DOCUMENTS, THE OTHER PROFESSIONALS' DOCUMENTS AND THE CONDITIONS OBSERVED ON SITE. NO DIMENSION MUST BE MEASURED TO SCALE ON THE DRAWINGS.

ALL THE CONSTRUCTION MUST CONFORM TO THE APPLICABLE VERSION OF THE ONTARIO BUILDING CODE.

COPYRIGHTS: THIS ARCHITECTURE DOCUMENT IS THE PROPERTY OF MAXIME-ALEXIS FRAPPIER ARCHITECT AND IS DESTINED EXCLUSIVELY FOR ITS INTENDED USE. ANY REPRODUCTION OR ADAPTATION, PARTIAL OR TOTAL, IS STRICTLY FORBIDDEN WITHOUT THE CONSENT OF MAXIME-ALEXIS FRAPPIER ARCHITECT.


THIS DOCUMENT MUST NOT BE USED FOR CONSTRUCTION

CIVIL




1331 Clyde Ave. Suite 402
Ottawa, Ontario, K2C 3K4

LANDSCAPE




Version Paysage
5315 Boul. St-Laurent #105
Montreal, Quebec, H2T 1S5

MECH / ELEC



Dupras Ledoux Ingénieurs
225 Rue Chabanel O
Montreal, Quebec, H2N 2C3

STRUCTURE



Elema Experts-Consults
3500 Rue Saint-Jacques, Bureau 101
Montreal, Quebec, H4C 1H2

NO.	REVISION	DATE	BY
9	FOR SPC REV 3	2021-01-20	TS
8	ISSUED FOR COMPLETION	2020-12-18	FP
6	FOR SPC - REV 2	2020-12-11	TS
7	Coordination 01	2020-12-09	FP
5	EXCAVATION PERMIT APPLICATION	2020-11-05	TS
4	FOR INFORMATION	2020-10-16	TS
3	FOR SPC - REV 1	2020-05-28	TS
2	FOR SPC	2020-01-17	TS
1	FOR COMMENTS	2019-12-13	TS

NO.	EMISSION	DATE	BY
1	ARCHITECTURE / INTERIOR DESIGN		

MAXIME-ALEXIS FRAPPIER
ARCHITECT

Montreal:
6150, rue Hutchison, suite 201, Montreal (Quebec) Canada H2V 4C5
T 514 456-1151 | F 514 288-0418

OWNER / DEVELOPER




Group Selection
2400 boul. Daniel-Johnson,
Laval, Québec, H7T 3A4


SmartCentres
3000 Highway 7
Vaughan, Ontario, L4K 5Z5

PROJECT

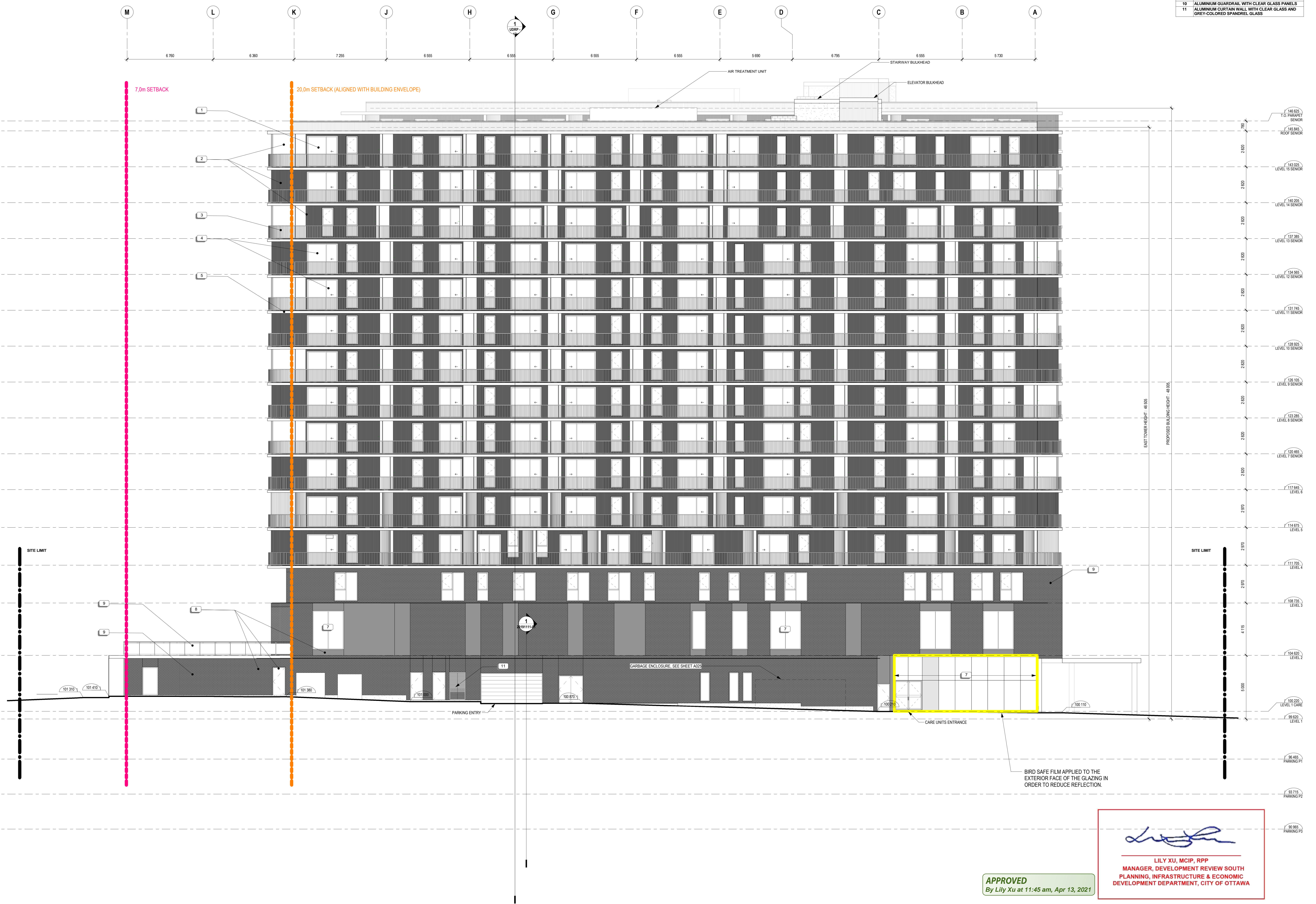
1357 BASELINE ROAD
OTTAWA, ON

SHEET TITLE
EAST ELEVATION

SEAL



PROJECT NUMBER: 17-1444
DRAWING NO: A303
REV NO: 9
DATE: 2021/01/20
SCALE: 1:100
DRAWN BY: WPS
VERIFIED BY: MSL



APPROVED
By Lily Xu at 11:45 am, Apr 13, 2021

Lily Xu
LILY XU, MCIP, RPP
MANAGER, DEVELOPMENT REVIEW SOUTH
PLANNING, INFRASTRUCTURE & ECONOMIC
DEVELOPMENT DEPARTMENT, CITY OF OTTAWA