

THE CONTRACTOR IS RESPONSIBLE FOR THE VERIFICATION AND COORDINATION OF ALL CONSTRUCTION DIMENSIONS AND FOR THE IMPLEMENTATION ON THE SITE. HE MUST ADVISE THE ARCHITECT OF ANY IRREGULARITY, OMISSION OR DIFFERENCE BETWEEN THESE DOCUMENTS, THE OTHER PROFESSIONALS' DOCUMENTS AND THE CONDITIONS OBSERVED ON SITE. NO DIMENSION MUST BE MEASURED TO SCALE ON THE DRAWINGS.

ALL THE CONSTRUCTION MUST CONFORM TO THE APPLICABLE VERSION OF THE ONTARIO BUILDING CODE.

COPYRIGHTS: THIS ARCHITECTURE DOCUMENT IS THE PROPERTY OF MAXIME-ALEXIS FRAPPIER ARCHITECT AND IS DESTINED EXCLUSIVELY FOR ITS INTENDED USE. ANY REPRODUCTION OR ADAPTATION, PARTIAL OR TOTAL, IS STRICTLY FORBIDDEN WITHOUT THE CONSENT OF MAXIME-ALEXIS FRAPPIER ARCHITECT.

THIS DOCUMENT MUST NOT BE USED FOR CONSTRUCTION

CIVIL



1331 Clyde Ave, Suite 400
Ottawa, Ontario, K2C 3G4

LANDSCAPE



Version Paysage
5315 Boul. St-Laurent #108
Montréal, Québec, H2T 1S5

MECH / ELEC



Dupras Ledoux Ingénieurs
225 Rue Chabanel O
Montréal, Québec, H2N 2C9

STRUCTURE



Elema Experts-Consults
3500 Rue Saint-Jacques, bureau 101
Montréal, Québec, H4C 1H2



NO.	EMISSION	DATE	BY
2	FOR SPC	2020-01-17	
1	FOR COMMENTS	2019-12-13	

ARCHITECTURE

MAXIME-ALEXIS FRAPPIER
ARCHITECT

Montréal:
6250, rue Hutchison, suite 201, Montréal (Québec) Canada H2V 4C5
T 514 456-1151 I F 514 288-0418

OWNER / DEVELOPER

Groupe Sélection
2400 boul. Daniel-Johnson,
Laval, Québec, H7T 3A4

SmartCentres
3200 Highway 7
Vaughan, Ontario, L4K 5Z5

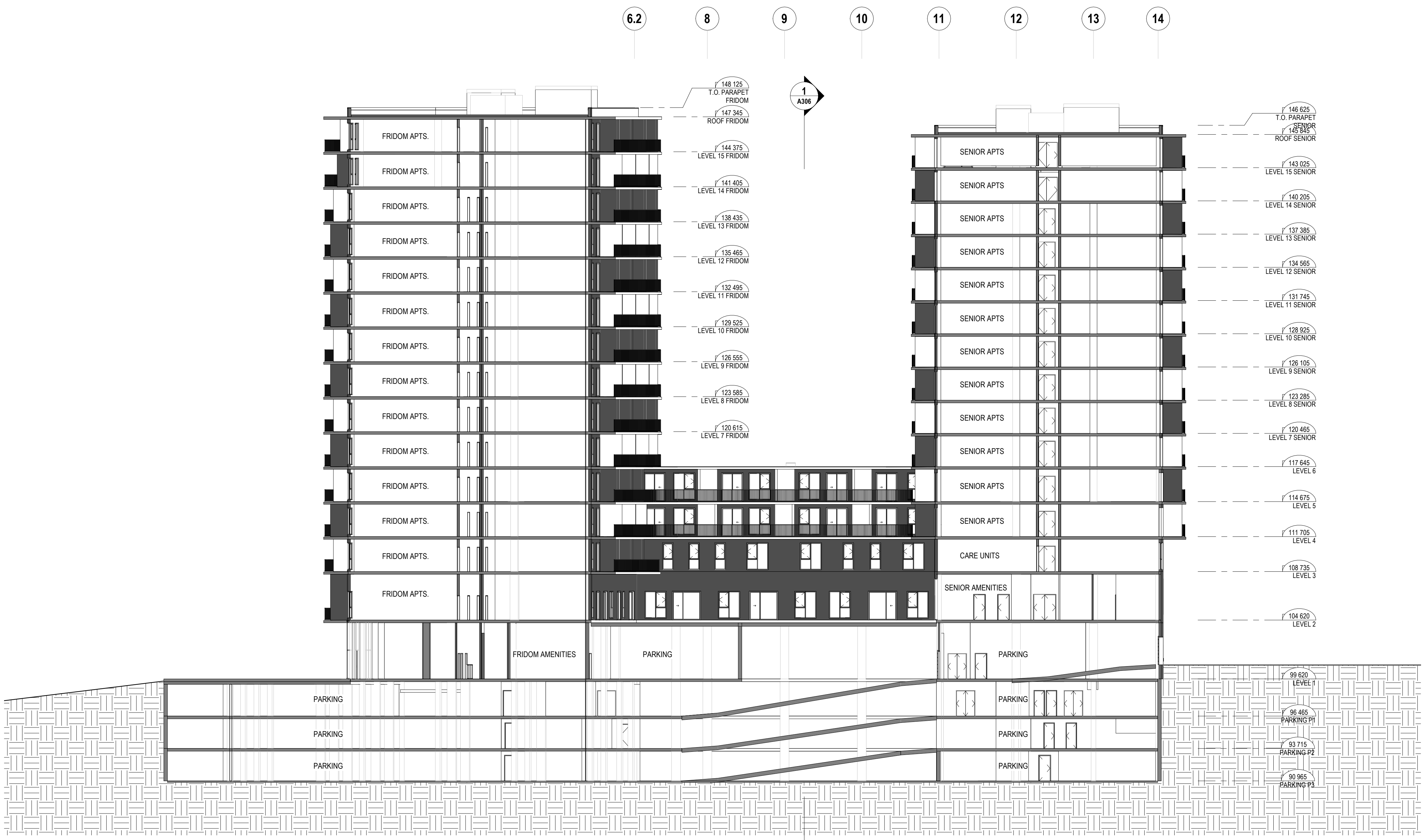
PROJECT

GROUPE SÉLECTION / SMARTCENTRES
1357 Baseline Road


SHEET TITLE
EAST-WEST SECTION

SEAL	PROJECT NUMBER 17-1444	
	DRAWING NO. A305	REV. NO. 2
DRAWN BY AUTEUR	DATE 2019/10/30	VERIFIED BY VÉRIFICATEUR
	SCALE 1 : 200	

FORMAT: A1



APPROVED
By Lily Xu at 11:46 am, Apr 13, 2021



LILY XU, MCIP, RPP
MANAGER, DEVELOPMENT REVIEW SOUTH
PLANNING, INFRASTRUCTURE & ECONOMIC
DEVELOPMENT DEPARTMENT, CITY OF OTTAWA

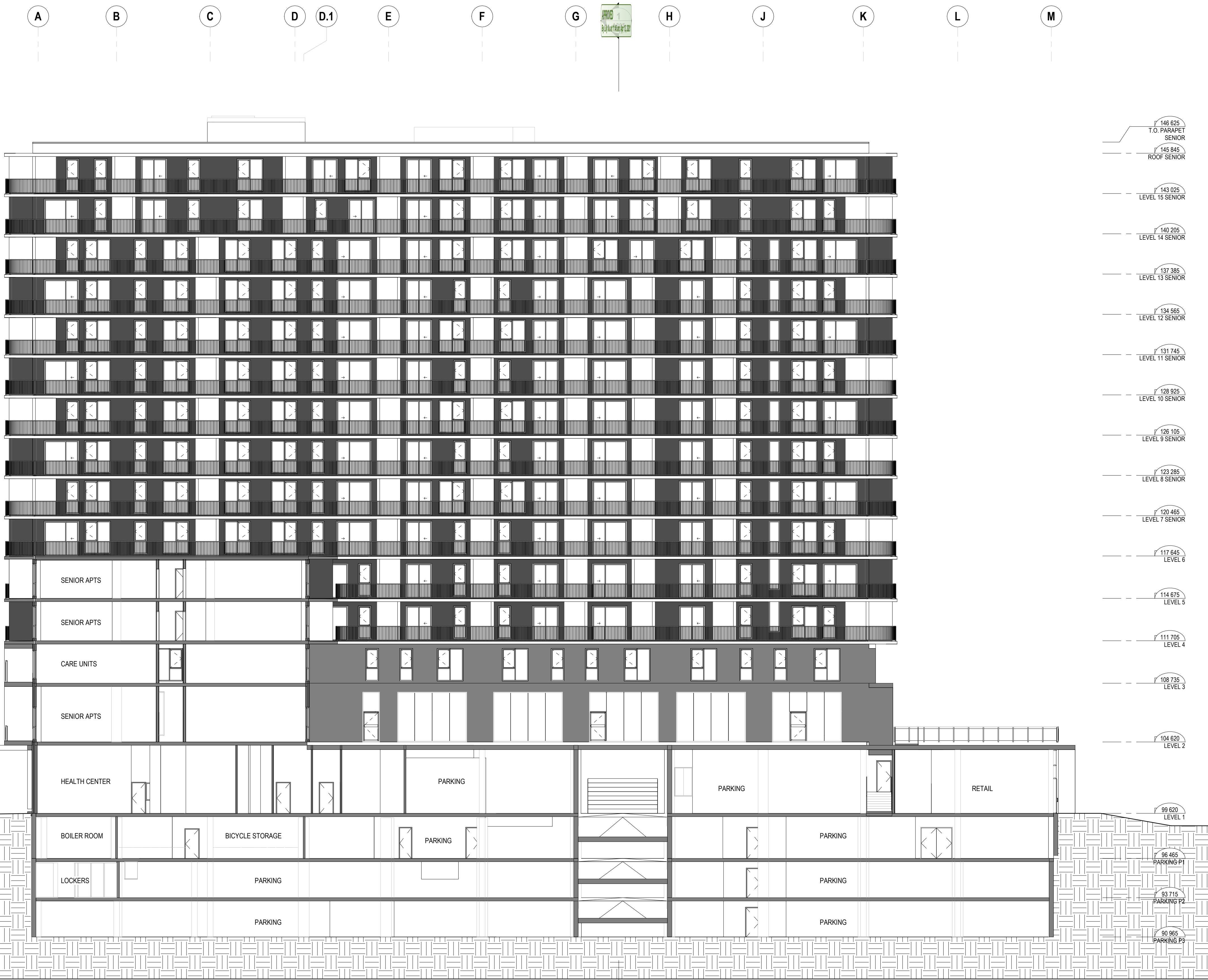


THE CONTRACTOR IS RESPONSIBLE FOR THE VERIFICATION AND COORDINATION OF ALL CONSTRUCTION DIMENSIONS AND FOR THE IMPLEMENTATION ON THE SITE. HE MUST ADVISE THE ARCHITECT OF ANY IRREGULARITY, OMISSION OR DIFFERENCE BETWEEN THESE DOCUMENTS, THE OTHER PROFESSIONALS' DOCUMENTS AND THE CONDITIONS OBSERVED ON SITE. NO DIMENSION MUST BE MEASURED TO SCALE ON THE DRAWINGS.

ALL THE CONSTRUCTION MUST CONFORM TO THE APPLICABLE VERSION OF THE ONTARIO BUILDING CODE.

COPYRIGHTS: THIS ARCHITECTURE DOCUMENT IS THE PROPERTY OF MAXIME-ALEXIS FRAPPIER ARCHITECT AND IS DESTINED EXCLUSIVELY FOR ITS INTENDED USE. ANY REPRODUCTION OR ADAPTATION, PARTIAL OR TOTAL, IS STRICTLY FORBIDDEN WITHOUT THE CONSENT OF MAXIME-ALEXIS FRAPPIER ARCHITECT.

THIS DOCUMENT MUST NOT BE USED FOR CONSTRUCTION



- 146.625 T.O. PARAPET SENIOR
- 145.845 ROOF SENIOR
- 143.025 LEVEL 15 SENIOR
- 140.205 LEVEL 14 SENIOR
- 137.385 LEVEL 13 SENIOR
- 134.565 LEVEL 12 SENIOR
- 131.745 LEVEL 11 SENIOR
- 128.925 LEVEL 10 SENIOR
- 126.105 LEVEL 9 SENIOR
- 123.285 LEVEL 8 SENIOR
- 120.465 LEVEL 7 SENIOR
- 117.645 LEVEL 6
- 114.825 LEVEL 5
- 112.005 LEVEL 4
- 109.185 LEVEL 3
- 106.365 LEVEL 2
- 99.620 LEVEL 1
- 96.465 PARKING P1
- 93.715 PARKING P2
- 90.965 PARKING P3

CIVIL

1331 Clyde Ave, Suite 400
Ottawa, Ontario, K2C 3G4

LANDSCAPE

Version Paysage
5315 Boul. St-Laurent #108
Montréal, Québec, H2T 1S5

MECH / ELEC

Dupras Ledoux Ingénieurs
225 Rue Chabanel O
Montréal, Québec, H2N 2C9

STRUCTURE

Elema Experts-Consults
3500 Rue Saint-Jacques, bureau 101
Montréal, Québec, H4C 1H2

NO.	EMISSION	DATE	BY
2	FOR SPC	2020-01-17	
1	FOR COMMENTS	2019-12-13	

NO.	EMISSION	DATE	BY
2	FOR SPC	2020-01-17	
1	FOR COMMENTS	2019-12-13	

ARCHITECTURE

MAXIME-ALEXIS FRAPPIER
ARCHITECT

Montréal:
6250, rue Hutchison, suite 201, Montréal (Québec) Canada H2V 4C5
T 514 456-1151 I F 514 288-0418

OWNER / DEVELOPER

Groupe Sélection
2400 boul. Daniel-Johnson,
Laval, Québec, H7T 3A4

SmartCentres
3200 Highway 7
Vaughan, Ontario, L4K 5Z5

PROJECT

GROUPE SÉLECTION / SMARTCENTRES
1357 Baseline Road

SHEET TITLE
NORTH-SOUTH SECTION

SEAL	PROJECT NUMBER 17-1444
	DRAWING NO. REV. NO. A306 2
	DATE 2019/10/30
DRAWN BY Auteur	SCALE 1 : 150
VERIFIED BY Vérificateur	

LILY XU, MCIP, RPP
MANAGER, DEVELOPMENT REVIEW SOUTH
PLANNING, INFRASTRUCTURE & ECONOMIC
DEVELOPMENT DEPARTMENT, CITY OF OTTAWA

APPROVED
By Lily Xu at 11:47 am, Apr 13, 2021

FORMAT: A1