

THE CONTRACTOR IS RESPONSIBLE FOR THE VERIFICATION AND COORDINATION OF ALL CONSTRUCTION DIMENSIONS AND FOR THE IMPLEMENTATION ON THE SITE. HE MUST ADVISE THE ARCHITECT OF ANY IRREGULARITY, OMISSION OR DIFFERENCE BETWEEN THESE DOCUMENTS, THE OTHER PROFESSIONALS' DOCUMENTS AND THE CONDITIONS OBSERVED ON SITE. NO DIMENSION MUST BE MEASURED TO SCALE ON THE DRAWINGS.

ALL THE CONSTRUCTION MUST CONFORM TO THE APPLICABLE VERSION OF THE ONTARIO BUILDING CODE.

COPYRIGHTS: THIS ARCHITECTURE DOCUMENT IS THE PROPERTY OF MAXIME-ALEXIS FRAPPIER ARCHITECT AND IS DESTINED EXCLUSIVELY FOR ITS INTENDED USE. ANY REPRODUCTION OR ADAPTATION, PARTIAL OR TOTAL, IS STRICTLY FORBIDDEN WITHOUT THE CONSENT OF MAXIME-ALEXIS FRAPPIER ARCHITECT.

**THIS DOCUMENT MUST NOT BE USED FOR CONSTRUCTION**

CIVIL




1331 Clyde Ave. Suite 402  
Ottawa, Ontario, K2C 3K4

LANDSCAPE




Version Paysage  
5315 Boul. St-Laurent #108  
Montreal, Quebec, H2T 1S5

MECH / ELEC



Dupras Ledoux Ingénieurs  
225 Rue Chabanel O  
Montreal, Quebec, H2N 2C3

STRUCTURE



Elema Experts-Consults  
3500 Rue Saint-Jacques, Bureau 101  
Montreal, Quebec, H4C 1H2

NO.	REVISION	DATE	BY
2	FOR SPC REV 3	2021-01-20	TS
1	ISSUED 50% COMPLETION	2020-02-18	FP

ARCHITECTURE / INTERIOR DESIGN

**MAXIME-ALEXIS FRAPPIER**  
ARCHITECT

Montreal:  
6250, rue Hutchison, suite 201, Montreal (Quebec) Canada H2V 4C5  
T 514 456-1151 F 514 288-0418

OWNER / DEVELOPER




Group Selection  
2400 boul. Daniel-Johnson,  
Laval, Quebec, H7T 3A4

SmartCentres  
3200 Highway 7  
Vaughan, Ontario, L4K 5Z5

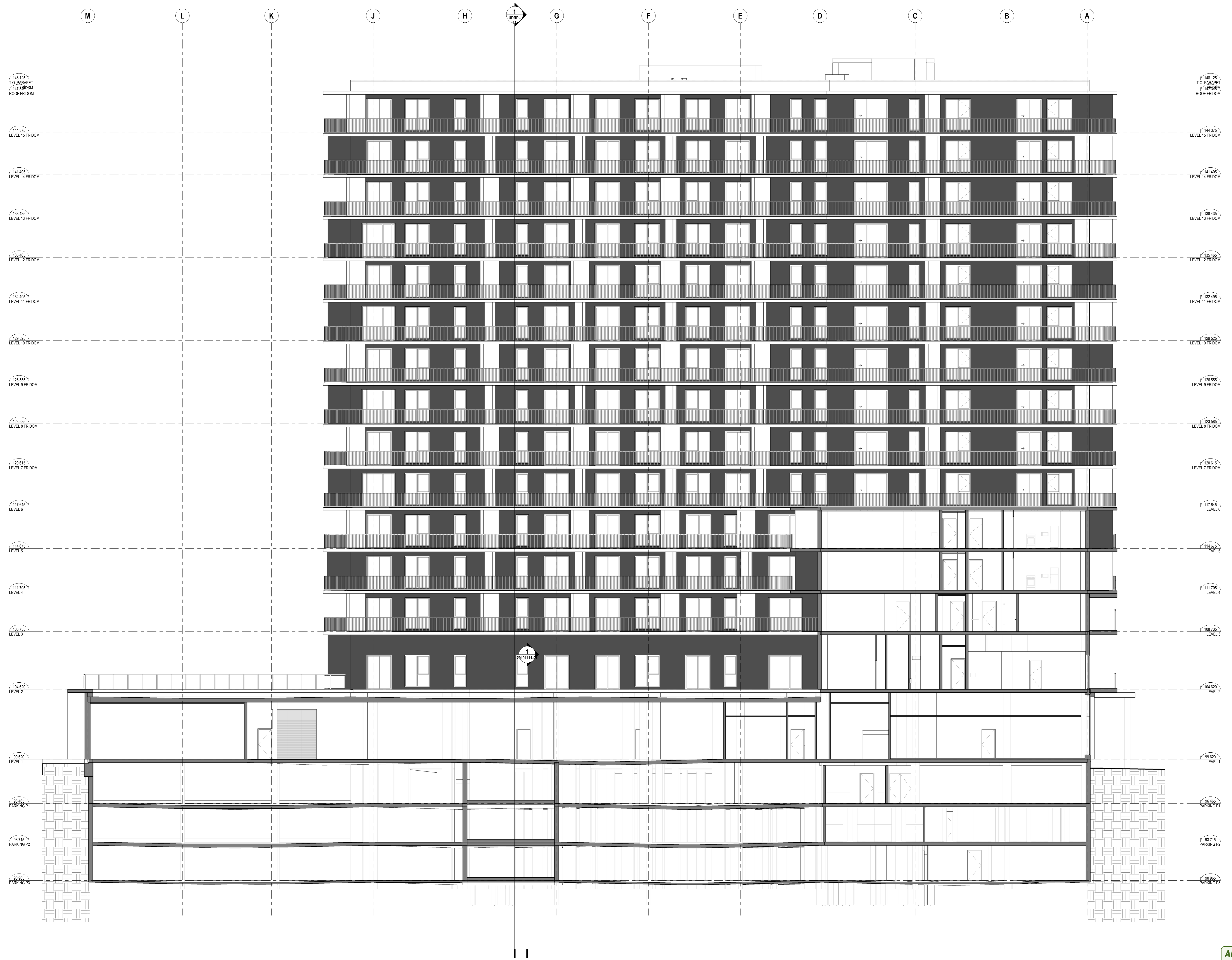
PROJECT

**1357 BASELINE ROAD**  
OTTAWA, ON


SHEET TITLE  
EAST ELEVATION FRIDOM

PROJECT NUMBER 17-1444	REV. NO. 2
DRAWING NO. A304	DATE 2021/01/20
SCALE 1:100	DRAWN BY JLX
VERIFIED BY	

FORMAT: A3



**APPROVED**  
By Lily Xu at 11:45 am, Apr 13, 2021



LILY XU, MCIP, RPP  
MANAGER, DEVELOPMENT REVIEW SOUTH  
PLANNING, INFRASTRUCTURE & ECONOMIC  
DEVELOPMENT DEPARTMENT, CITY OF OTTAWA