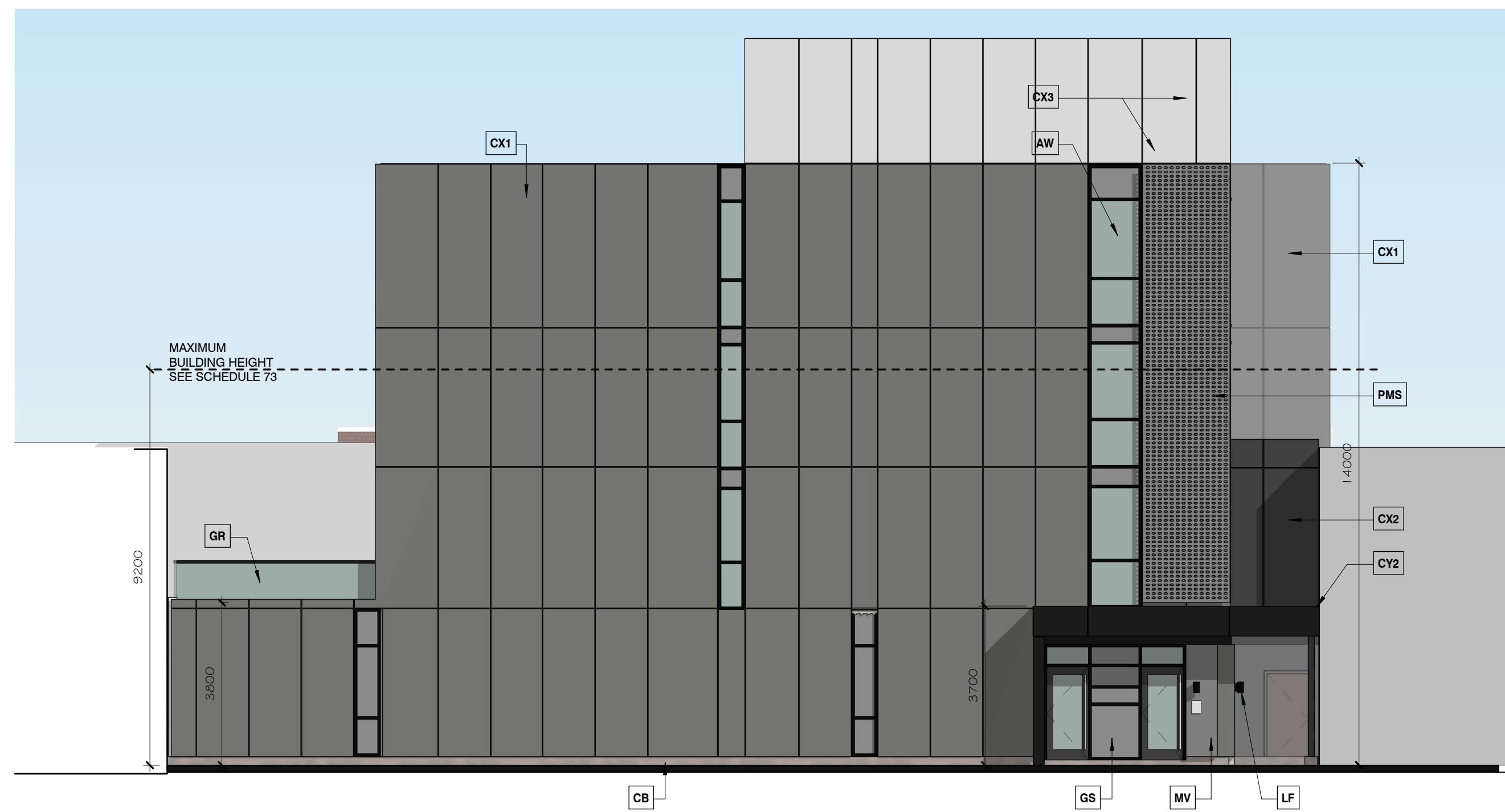




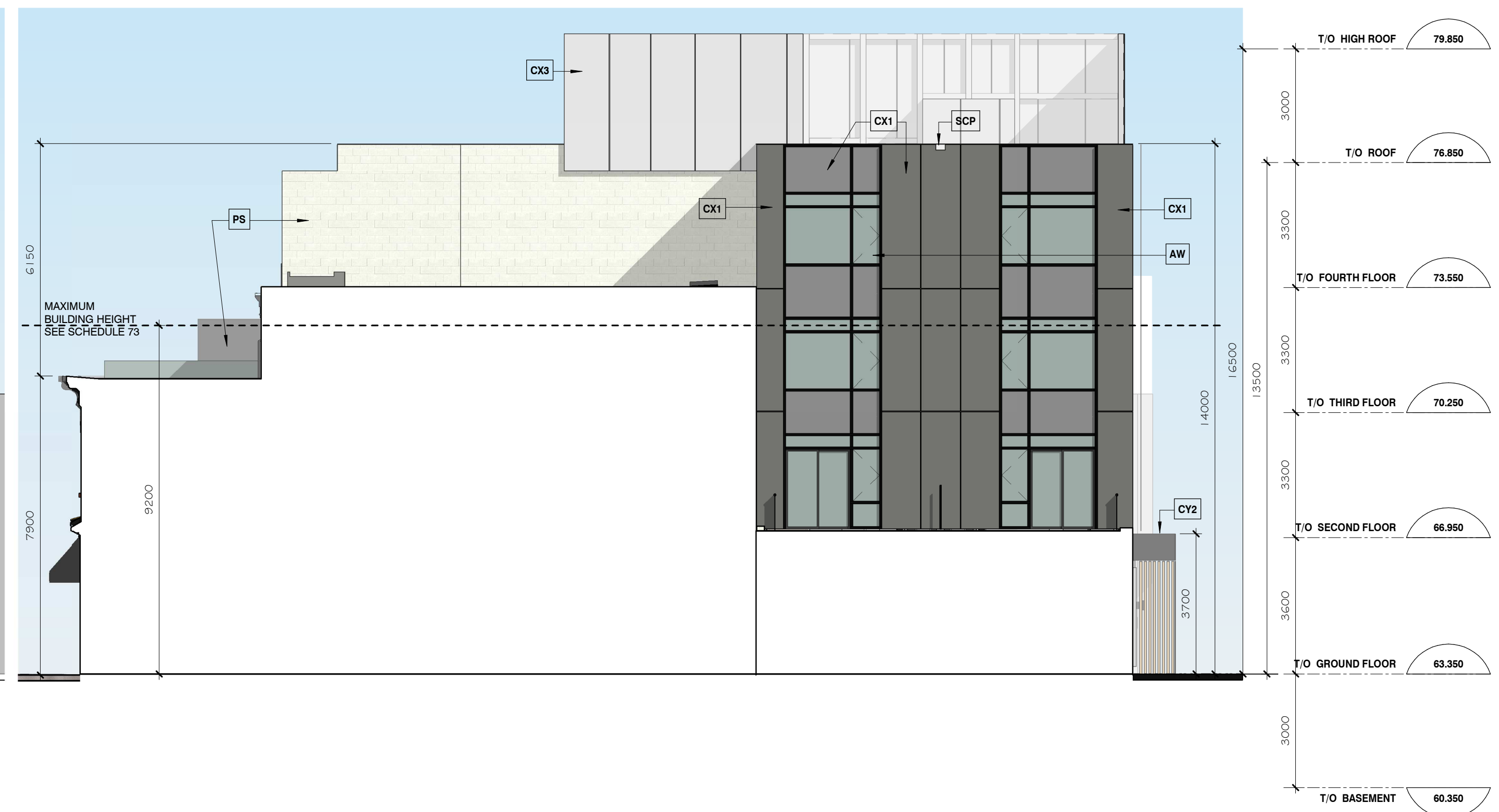
1 WEST ELEVATION
SCALE: 1 : 100




2 NORTH ELEVATION
SCALE: 1 : 100



3 EAST ELEVATION
SCALE: 1 : 100



4 SOUTH ELEVATION
SCALE: 1 : 100


DOUGLAS JAMES, MCIP, RPP
 MANAGER, DEVELOPMENT REVIEW - CENTRAL
 PLANNING, INFRASTRUCTURE & ECONOMIC
 DEVELOPMENT DEPARTMENT, CITY OF OTTAWA

APPROVED
 By Douglas James at 1:15 pm, Apr 06, 2021

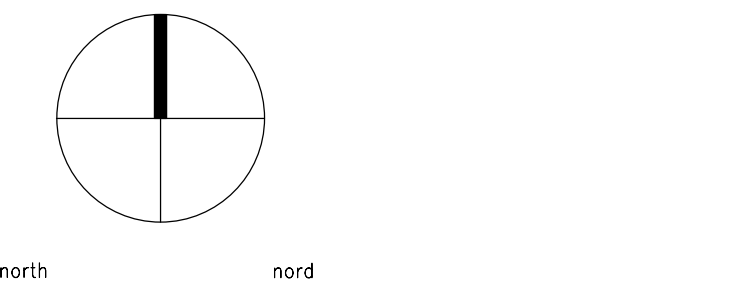
NOTES:

Contractor shall check and verify all dimensions on site and report any discrepancies to the Architect before proceeding.

ELEVATION NOTES

Note #	Note Text
(EJPBW)	Existing Painted Brick Wall
(EJSW)	Existing Stone Wall
AW	Aluminum Windows c/w Clear Glass
CB	Concrete Base
CX1	Sintered Ceramic Panel Facade System (Ceramitex or Similar); Colour TBD
CX2	Sintered Ceramic Panel Facade System (Ceramitex or Similar); Colour TBD
CX3	Sintered Ceramic Panel Facade System (Ceramitex or Similar); Colour TBD
CY1	Canopy over Feather's Lane C/W recessed Pot Lights. See Electrical
CY2	Canopy over Residential Entrance, c/w recessed Pot Lights. See Electrical
CY3	Canopy extends 1 m in depth from the William Street lot line.
DWB	Painted Decorative Wood Base
FA	Fabric Awning c/w Business' Logo
GPD	Aluminum Curtain Wall System c/w Clear Glass, Sliding Patio Doors
GR	Clear Glass Railing
GS	Glass Spandrel
LF	Wall-mounted Light Fixture; See Electrical
MC	Prefinished Metal Cornice
MV	Masonry Veneer
PMS	Prefinished Metal Perforated Screen
PS	Privacy Screen
SCP	Scupper Drain
SF1	Aluminum Storefront c/w Clear Glass
SF2	Aluminum Storefront c/w Clear Glass, Operable Sliders
STRY1	One-storey portion of 35 & 37 William Street building that is located between 13.25 m from the lot line and extends 4.5 m back (to be waste room).
STRY2	Two-storey portion of existing 62 York Street building that abuts the 35 & 37 William Street building.
WC	Painted Wood Cornice
WIG	Wrought Iron Gate

1	Issued for Site Plan Approval	24 Sept 2020
no.	revision	date




 383 Parkdale Avenue, Suite 201
 Ottawa Ontario Canada K1Y 4R4
KWC ARCHITECTS INC.
 PHONE (613) 238-2117
 FAX (613) 238-6595
 E MAIL kwc@kwc-arch.com

detail no.	1	detail no.
sheet no.	A101	feuille no.

project / projet

**PROPOSED MIXED-USE
 COMMERCIAL & HOTEL**
 35-37 William Street
 Ottawa, ON.

designed by / conçu par	MM / SK	approved by / approuvé par	
drawn by / dessinée par	TC	project no. / no. du projet	2002
date	2 December 2019	scale	as noted

drawing / dessin

BUILDING ELEVATIONS