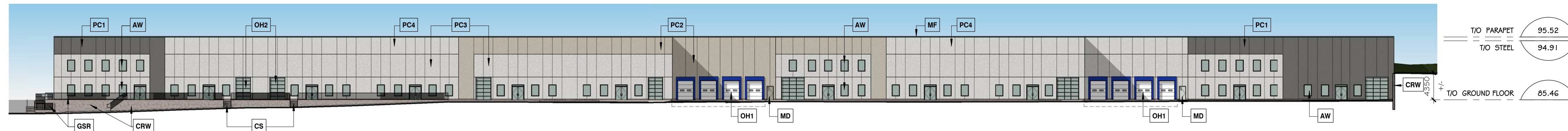
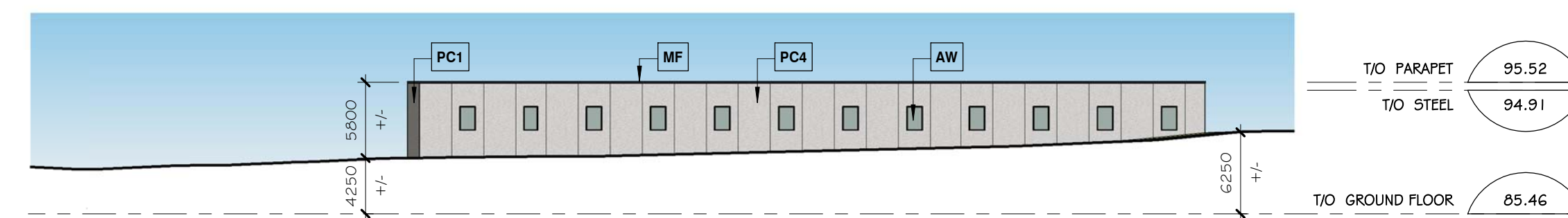
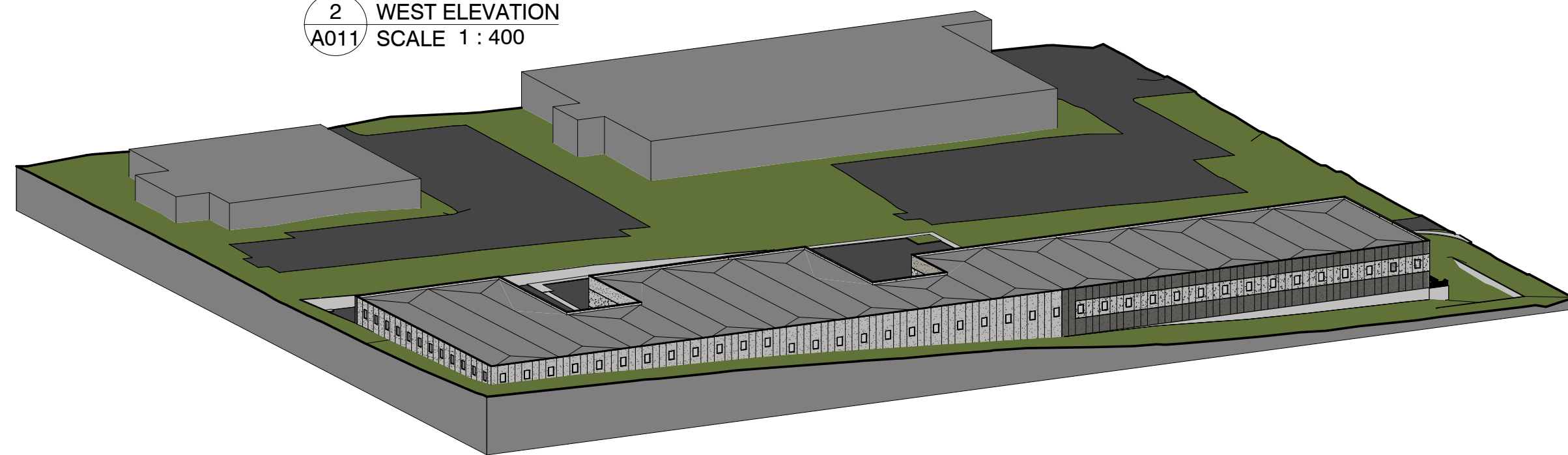


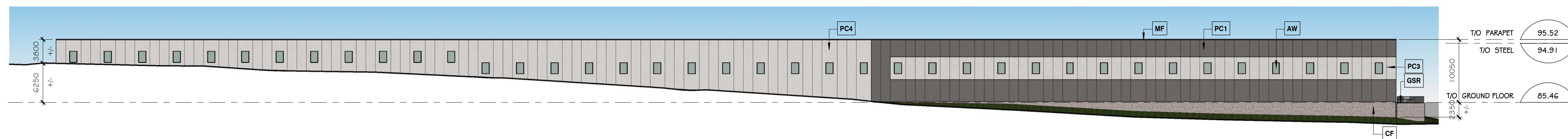
1 NORTH ELEVATION
A011 SCALE 1 : 400



2 WEST ELEVATION
A011 SCALE 1 : 400



3 SOUTH ELEVATION
A011 SCALE 1 : 400



4 EAST ELEVATION
A011 SCALE 1 : 400

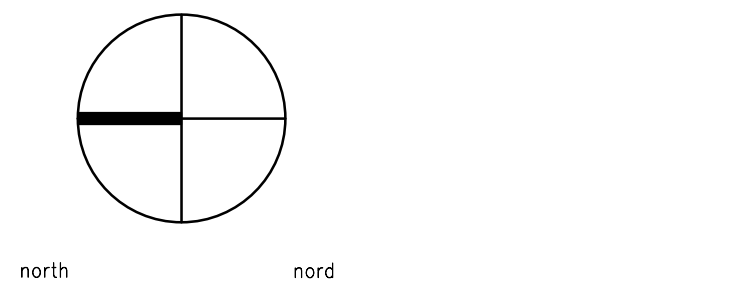


ELEVATION NOTES	
Note #	Note Text
AW	Clear Anodized Aluminum Window, with Clear Glass
CF	Concrete Foundation Wall
CRW	Concrete Retaining Wall
CS	Concrete Stair
GSR	Galvanized Steel Guardrail
MD	Painted Hollow-Metal Door & Steel Frame, colour matching adjacent siding colour
MF	Prefinished Metal Parapet Cap Flashing, dark grey colour
OH1	Solid, Prefinished, Insulated Overhead Door, complete weather seal, dock bumper and dock leveler
OH2	Glazed Overhead Door in Clear Anodized Aluminum Frame
PC1	Precast Concrete, Light Sandblast Finish, stained charcoal
PC2	Precast Concrete, Light Sandblast Finish, stained stone grey
PC3	Precast Concrete, Heavy Sandblast Finish, natural grey
PC4	Precast Concrete, Light Sandblast Finish, natural grey

NOTES:

Contractor shall check and verify all dimensions on site and report any discrepancies to the Architect before proceeding.

1	RESPONSE TO PLANNING COMMENTS	12 MAY 2020
0	ISSUED FOR SITE PLAN APPROVAL	13 FEB 2020
no.	revision	date



383 Parkdale Avenue, Suite 201
Ottawa Ontario Canada K1Y 4R4

KWC ARCHITECTS INC.

PHONE (613) 238-2117
FAX (613) 238-6595
E MAIL kwo@kwc-arch.com

detail no.	1	detail no.
sheet no.	A1	feuille no.

project
projet

PROPOSED WAREHOUSE

**1243 TERON RD.
OTTAWA, ON.**

designed by conçu par	KWC	approved by approuvé par	
drawn by dessiné par	AK	project no. no. du projet	1943
date	04 MARCH 2020	scale	as noted
drawing / dessin			

BUILDING ELEVATIONS

plot scale 1:1