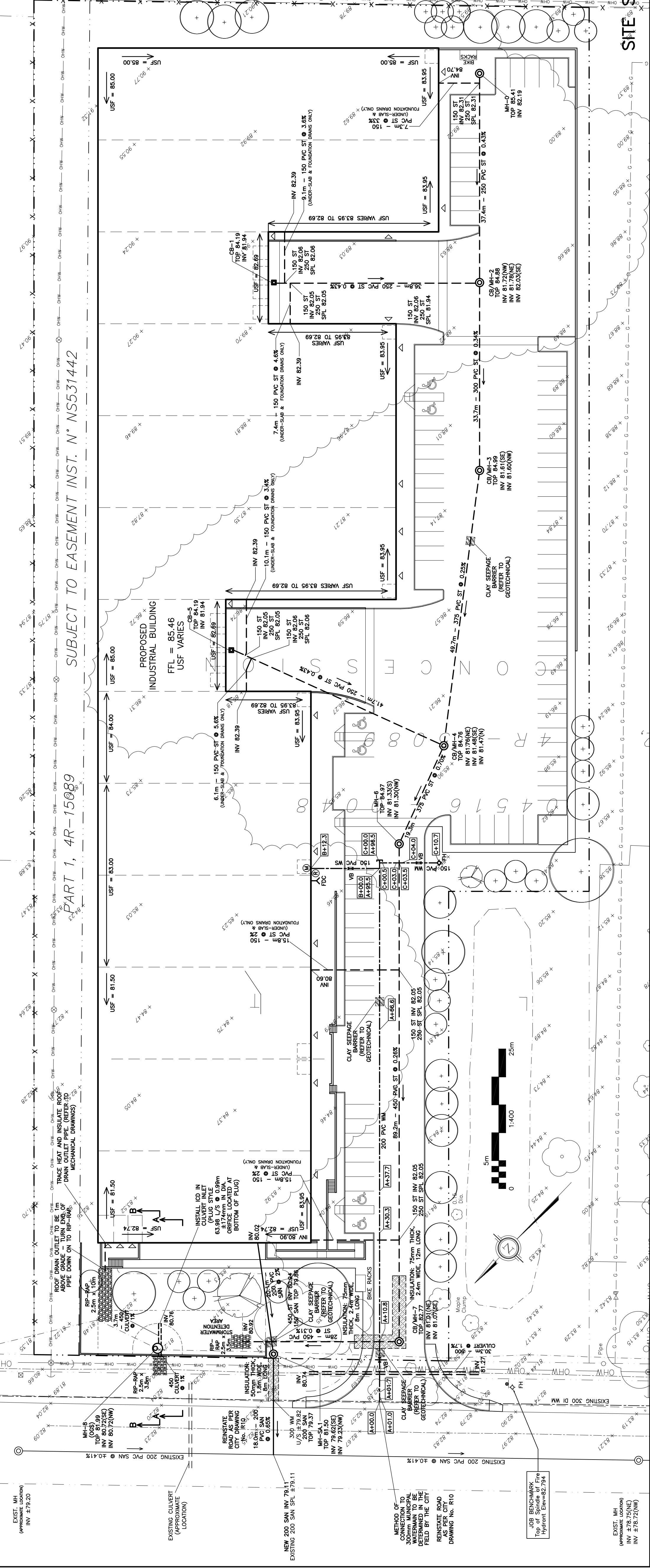
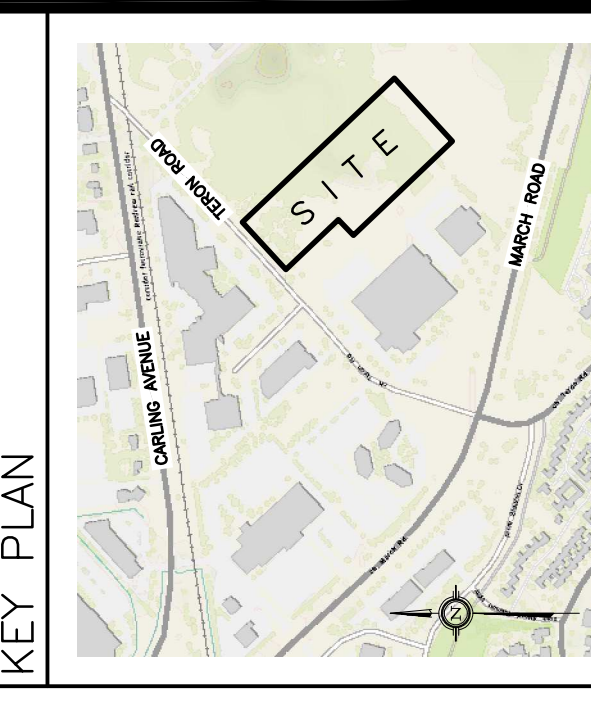


REFER TO NOTES & DETAILS ON DRAWINGS C-3, C-4 & C-5



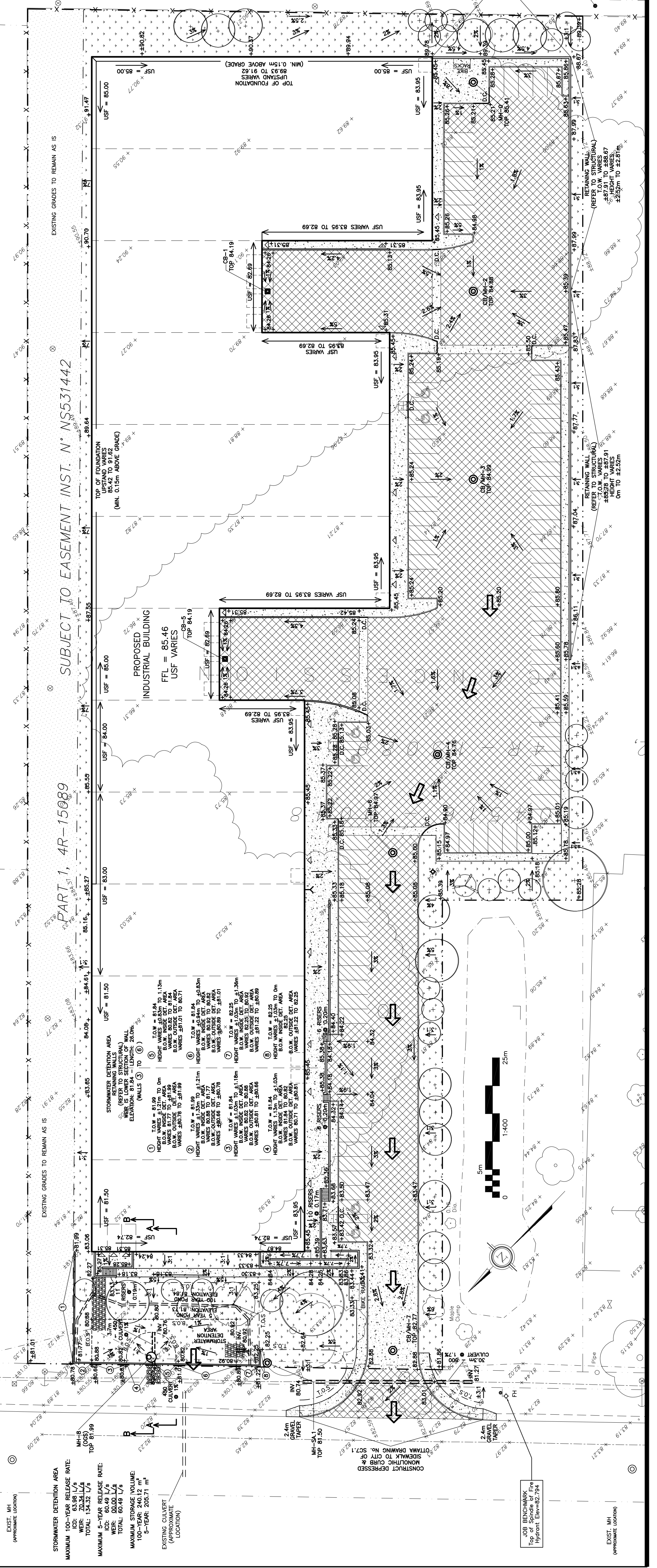
**DRAWING LEGEND**

|        |                            |
|--------|----------------------------|
| CB     | CATCH BASIN                |
| MH     | MANHOLE                    |
| CB/MH  | CATCH BASIN/MANHOLE        |
| SPL    | SPRINGLINE OF PIPE         |
| INV    | INVERT OF PIPE             |
| SN     | SANITARY SEWER             |
| ST     | STORM SEWER                |
| WS/W   | WATER SERVICE/WATERMAIN    |
| VF     | VALVE & VALVE BOX          |
| FH     | FIRE HYDRANT               |
| FDC    | FIRE DEPARTMENT CONNECTION |
| WM     | WATER METER                |
| WMR    | REMOTE WATER METER READOUT |
| EGE    | EXISTING GRADE ELEVATION   |
| +86.75 | PROPOSED GRADE ELEVATION   |
| 0.5%   | PROPOSED SLOPE OF GRADE    |
| 0.5%   | EMERGENCY OVERLAND FLOW    |
| T.O.S. | TOP OF SLOPE               |
| B.O.S. | BOTTOM OF SLOPE            |
| ---    | PROPERTY LINE              |
| D.C.   | 150mm CURB/DEPRESSED CURB  |
| GRAVEL | GRAVEL                     |
| ---    | LIGHT-DUTY PAVEMENT        |
| ---    | HEAVY-DUTY PAVEMENT        |
| ---    | CONCRETE                   |
| ---    | LANDSCAPE                  |
| FEL    | FIRST FLOOR ELEVATION      |
| USF    | UNDERSIDE OF FOOTING       |



SITE SERVICING PLAN

REFER TO NOTES & DETAILS ON DRAWINGS C-3, C-4 & C-5



GRADING PLAN

| No. | DATE      | REVISION                |
|-----|-----------|-------------------------|
| 5   | SEP 1-20  | RE-ISSUED FOR APPROVAL  |
| 4   | JUL 13-20 | RE-ISSUED FOR APPROVAL  |
| 3   | MAY 13-20 | RE-ISSUED FOR APPROVAL  |
| 2   | FEB 13-20 | ISSUED FOR APPROVAL     |
| 1   | FEB 11-20 | ISSUED FOR COORDINATION |

**D. B. GRAY ENGINEERING INC.**  
 700 Long Point Circle  
 Ottawa, Ontario  
 613-425-8044  
 dgray@dbgrayengineering.com

**PROPOSED**  
 1 STOREY  
 INDUSTRIAL WAREHOUSE  
 1243 TERON ROAD  
 OTTAWA, ONTARIO

**SITE SERVICING PLAN & GRADING PLAN**

Engineer's Seal  
**D.B. GRAY**  
 PROFESSIONAL ENGINEER  
 77016502  
 SEP 1-20  
 REG. NO. 19057  
 Drawing No. **C-1**  
 of **6**  
 NOT VALID UNLESS SIGNED & DATED