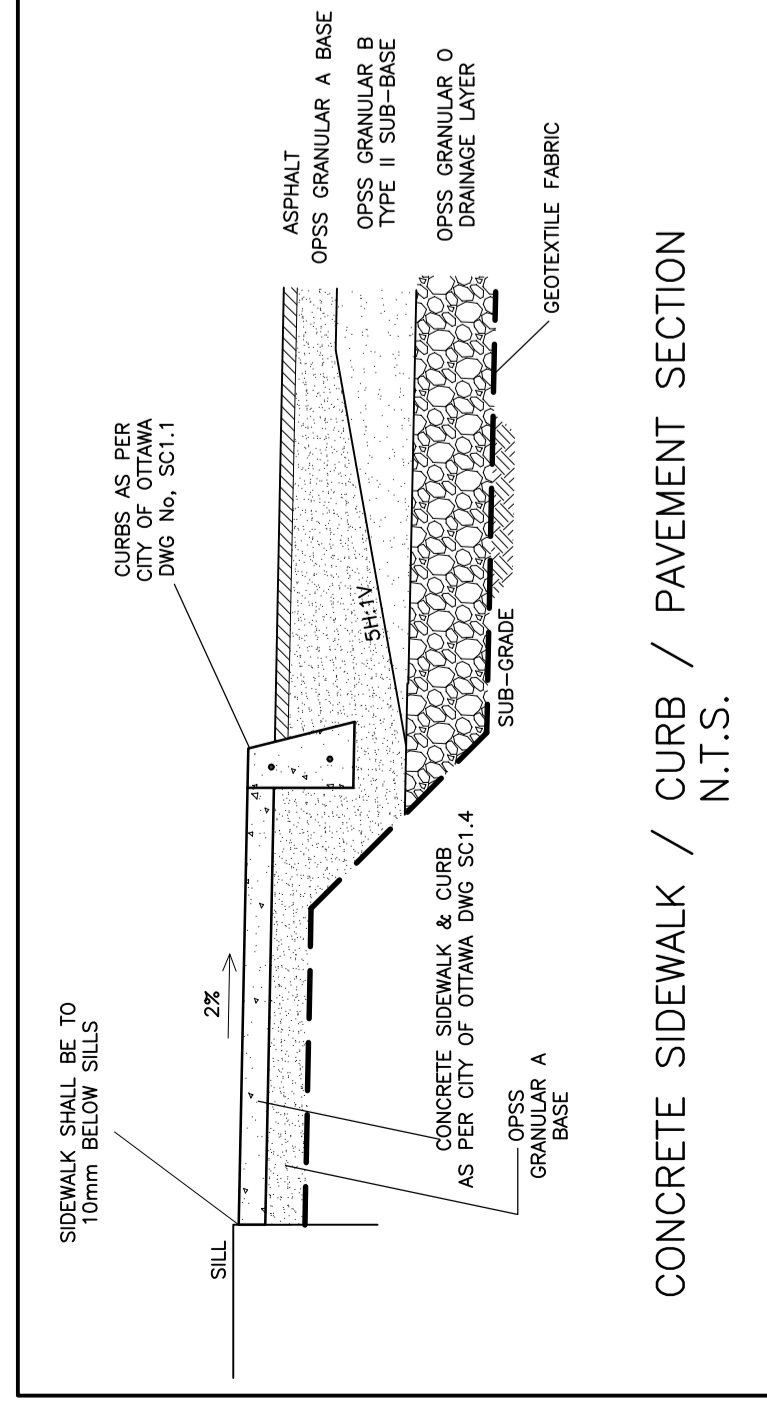
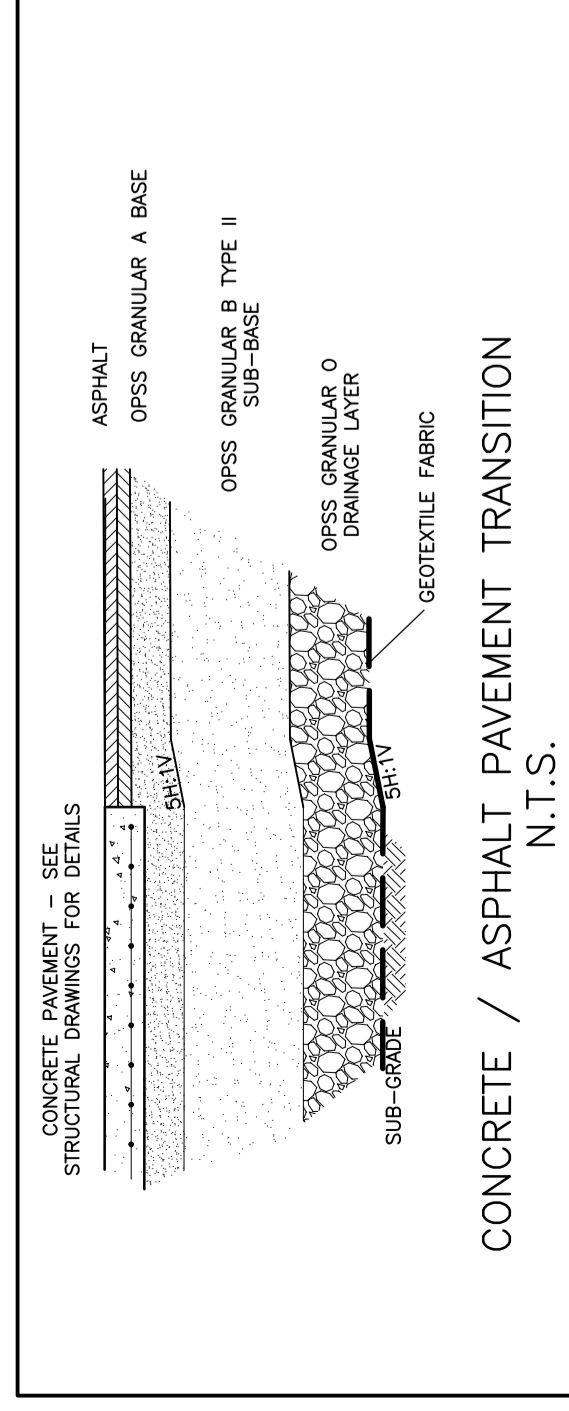


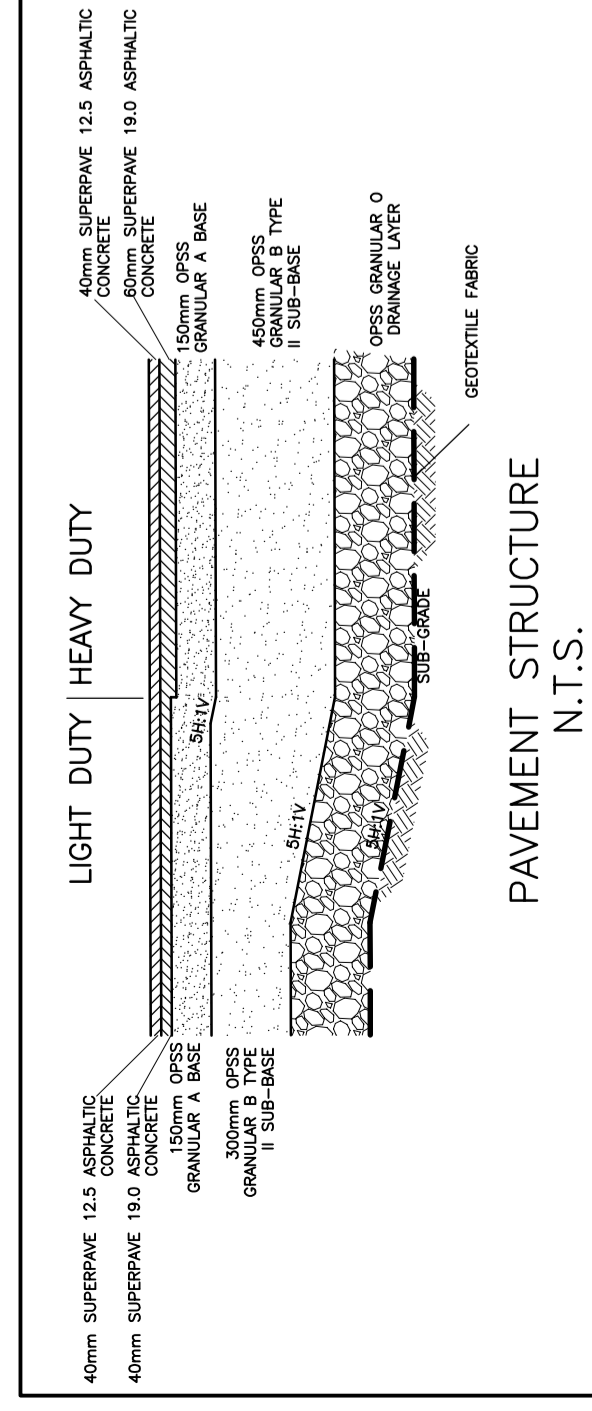
EXISTING ASPHALT / PAVED SHOULDER / GRANULAR SHOULDER
N.I.T.S.



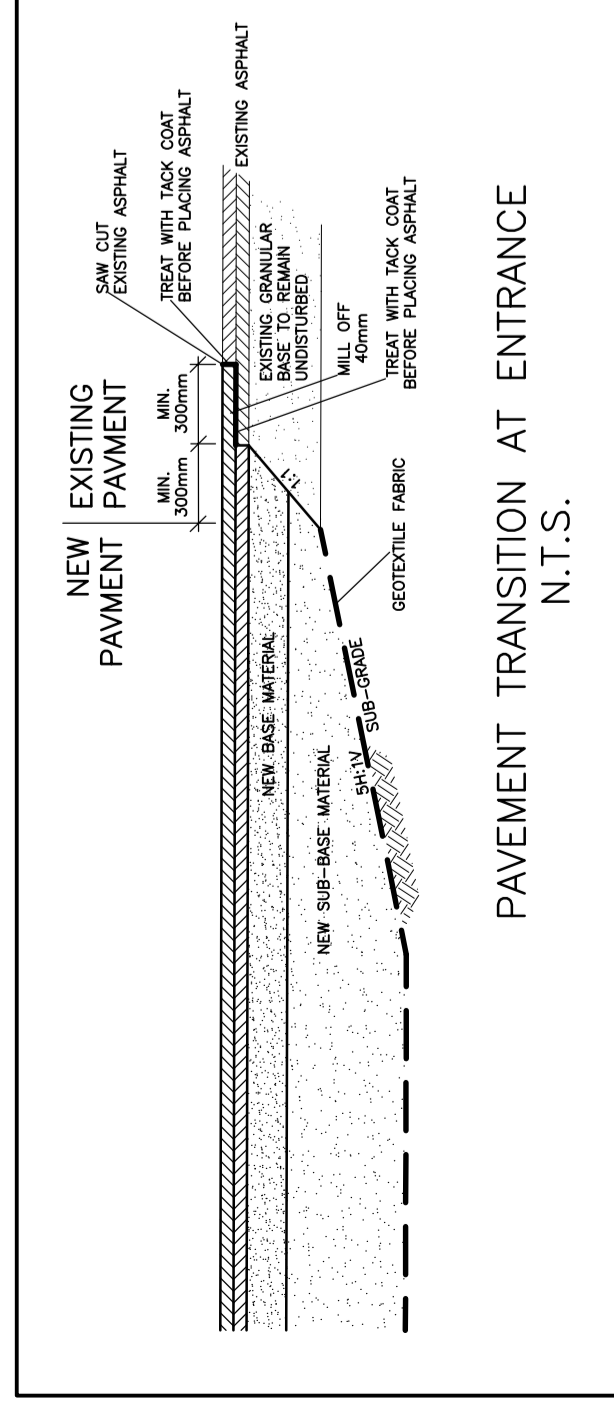
CONCRETE SIDEWALK / CURB / PAVEMENT SECTION
N.I.T.S.



CONCRETE / ASPHALT PAVEMENT TRANSITION
N.I.T.S.

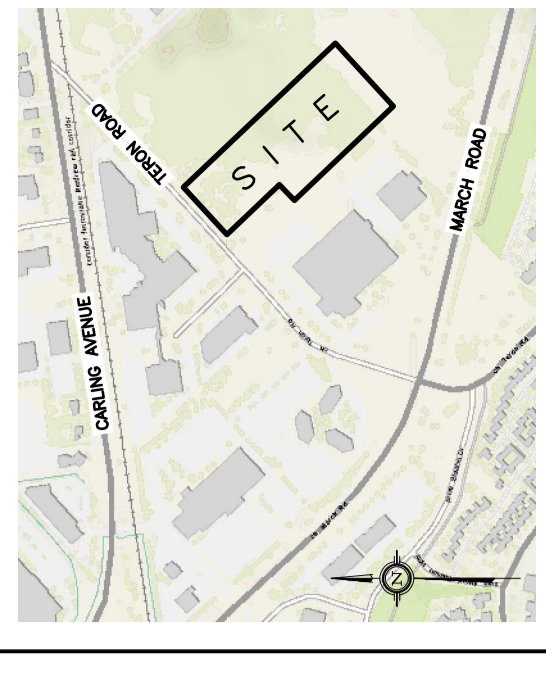


PAVEMENT STRUCTURE
N.I.T.S.



PAVEMENT TRANSITION AT ENTRANCE
N.I.T.S.

KEY PLAN

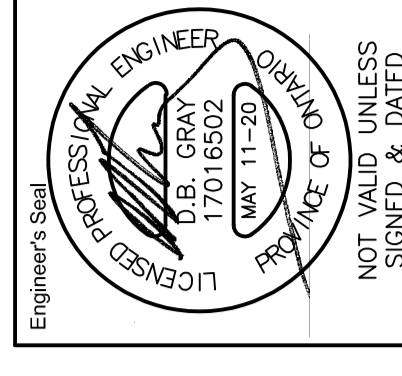


No.	DATE	REVISION
1	FEB 11-20	ISSUED FOR COORDINATION
2	FEB 13-20	ISSUED FOR APPROVAL
3	MAY 11-20	RE-ISSUED FOR APPROVAL

D. B. GRAY ENGINEERING INC.
 Surveying Management - Grading & Drainage - Storm & Sanitary Sewers - Pavement
 700 Long Point Circle
 Ottawa, Ontario
 613-425-8044
 dgray@dbgrayengineering.com

Project
**PROPOSED
 1 STOREY
 INDUSTRIAL WAREHOUSE**
 1243 TERON ROAD
 OTTAWA, ONTARIO

Drawing Title
SECTIONS



Drawn: D.B.G.
 Hor. Scale
 Vert. Scale
 Date: OCT 18-19
 Job No.: 19057
 Drawing No.: **C-4**
 of **6**
 #18115