

Project Zoning Review/Statistics

Municipality: City of Ottawa
Municipal Address: 1265 Teron Road
Registered Owner: Megha Holdings Inc.
Lot Area: 21,994 sq.m. (236,739 sq.ft.) (5.44 acres)
Zoning Analysis: Ottawa
Zoning By-law: 2008-250
Zone: I6G - General Industrial Zone
Proposed Use: Warehouse

Table with 3 columns: Building Areas, Gross (out-to-out) Sq.m., Sq.ft. Rows include Proposed Warehouse, Proposed Development, and Grand Total.

Development Standards

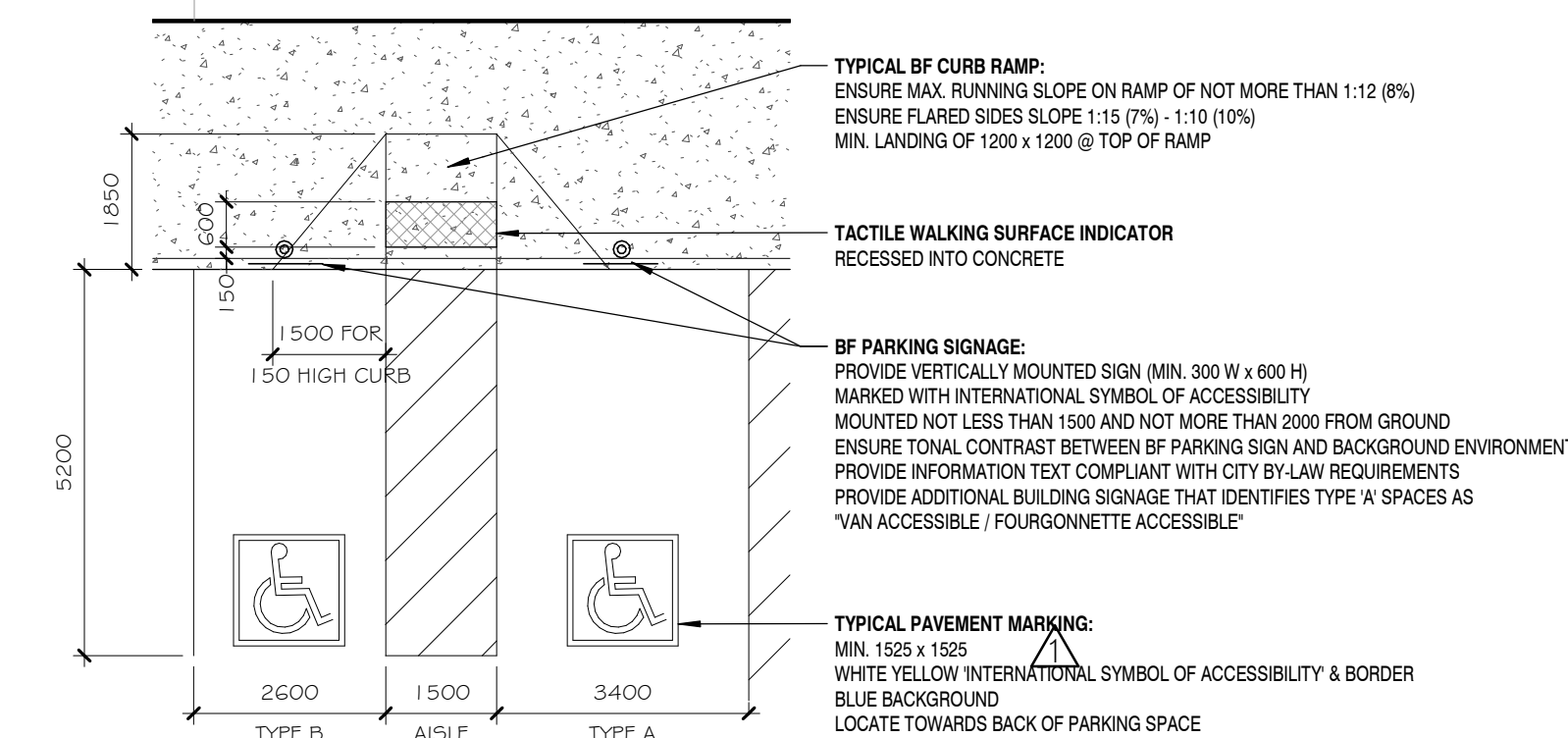
Table with 3 columns: Development Standards, Required, Provided. Rows include Minimum Lot Area, Minimum Lot Width, Minimum Required Yard, Maximum Building Height, etc.

Parking, Loading, Queuing

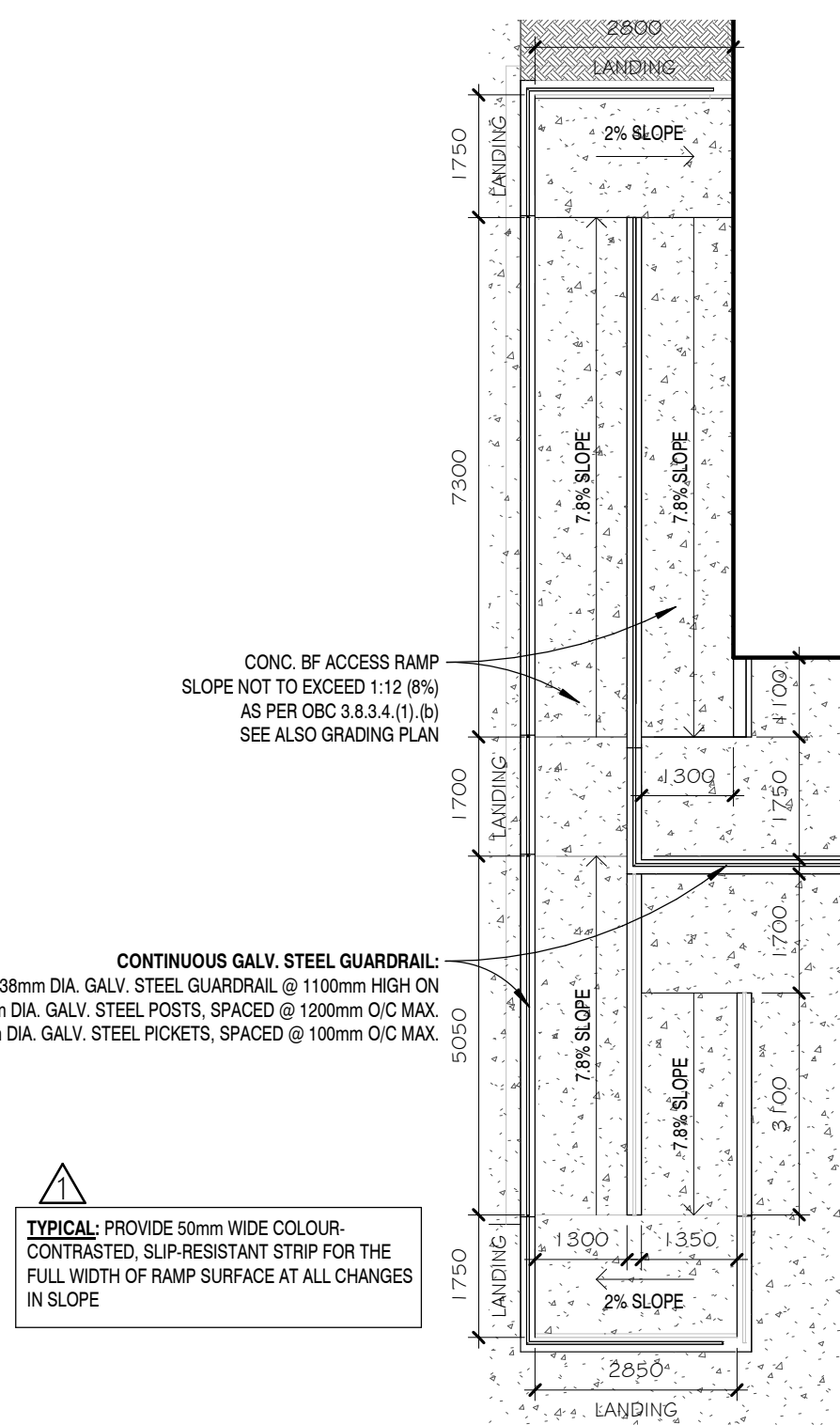
Table with 3 columns: Parking Spaces (2.6m x 5.2m), Required, Provided. Rows include Warehouse (0.8 spaces/100 sq.m.), Accessible Parking, Bicycle Parking, Standard Loading Spaces, Oversized Loading Spaces.



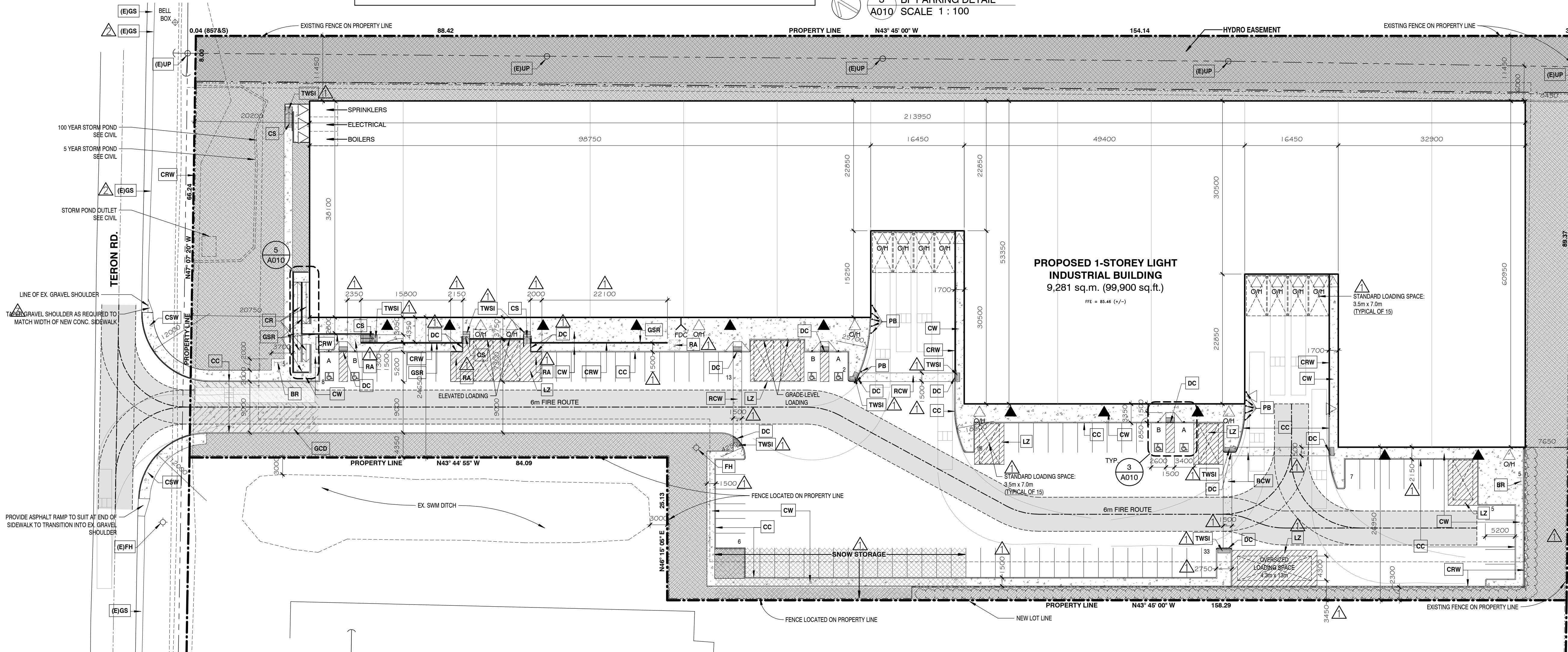
1 LOCATION PLAN A1010 SCALE N.T.S.



3 BF PARKING DETAIL A1010 SCALE 1:100



5 BF RAMP DETAIL A1010 SCALE 1:100



2 SITE PLAN A1010 SCALE 1:400

SITE PLAN LEGEND table with columns: ICON, DESCRIPTION. Lists symbols for concrete, landscape area, proposed buildings, curbs, fences, signage, etc.

SITE PLAN NOTES

Table with 2 columns: Note #, Note Text. Lists specific instructions for site elements like fire hydrants, utility poles, bike racks, etc.

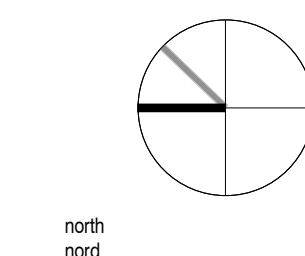
NOTES

Contractor shall check and verify all dimensions on site and report any discrepancies to the Architect before proceeding.

GENERAL SITE PLAN NOTES:

- 1. Exterior site lighting shall be directed onto the site away from adjacent properties. See Electrical Drawings.
2. Read this drawing in conjunction with the Landscape Drawings, Civil Engineering Drawings and Electrical Drawings.

Revision table with columns: no., revision, date. Shows revisions from 0 to 4.



383 Parkdale Avenue, Suite 201
Ottawa, Ontario, Canada, K1Y 4R4
KWC ARCHITECTS INC.
Phone: 613 238-2217
Fax: 613 238-6595
E-Mail: kw@kwc-arch.com

1 A1010 no. de détail no. de la feuille

project project

PROPOSED WAREHOUSE

1265 TERON RD., OTTAWA, ONTARIO

designed by: KWC
approved by: KWC
drawn by: AK / TC
checked by: AK / TC
date: 30 NOVEMBER 2020
scale: as noted

SITE PLAN

4 A1010 sheet no. no. de la feuille