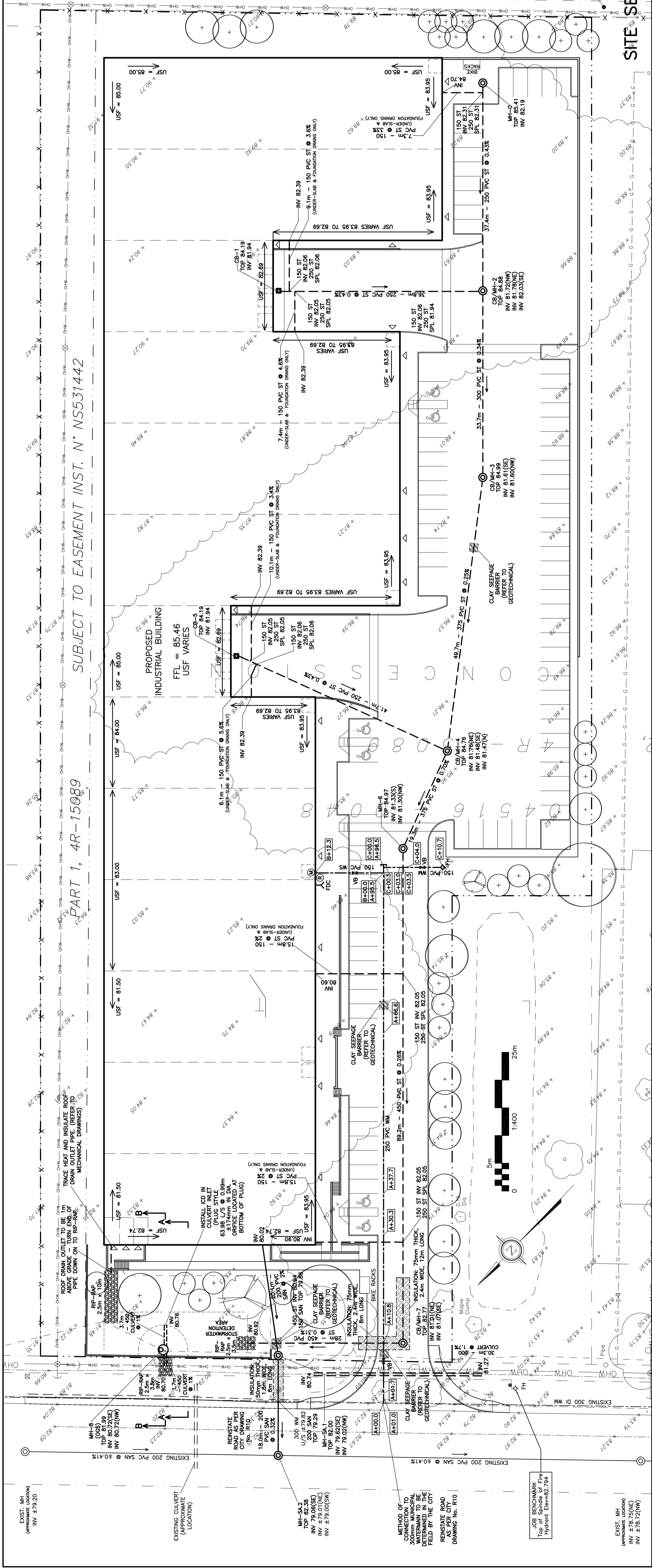


REFER TO NOTES & DETAILS ON DRAWINGS C-3, C-4 & C-5

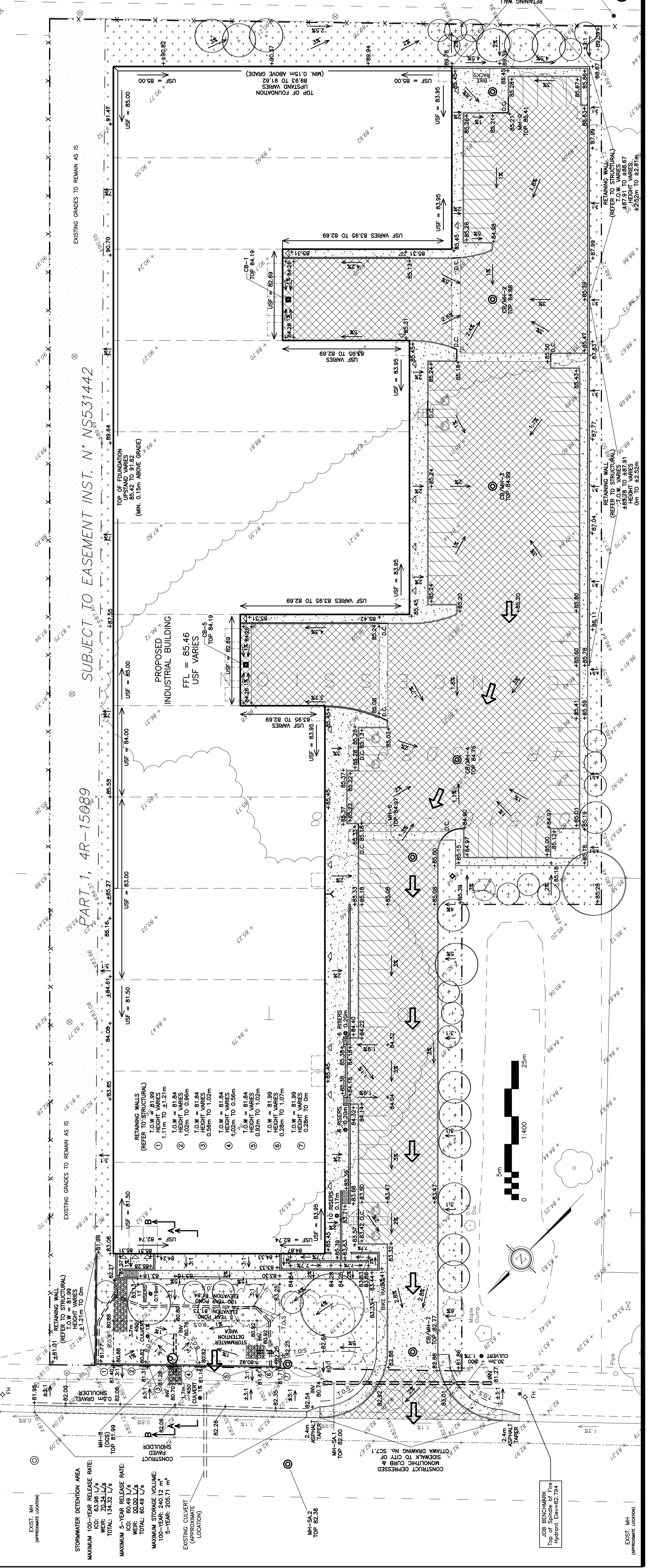


**DRAWING LEGEND**

CB	CATCH BASIN
MH	MANHOLE
CB/MH	CATCH BASIN/MANHOLE
SPL	SPRINGLINE OF PIPE
INV	INVERT OF PIPE
SN	SANITARY SEWER
ST	STORM SEWER
MS/WN	WATERS SERVICE/WATERMAIN
VF	VALVE & VALVE BOX
FH	FIRE HYDRANT
FDC	FIRE DEPARTMENT CONNECTION
WM	WATER METER
WME	REMOTE WATER METER HEADOUT
EGE	EXISTING GRADE ELEVATION
PGE	PROPOSED GRADE ELEVATION
0.5%	EXISTING SLOPE OF GRADE
0.5%	PROPOSED SLOPE OF GRADE
→	EMERGENCY OVERLAND FLOW
-T.O.S.	TOP OF SLOPE
-B.O.S.	BOTTOM OF SLOPE
-	PROPERTY LINE
D.C.	150mm CURB/DEPRESSED CURB
ASPH	ASPHALT SHOULDER
LD	LIGHT-DUTY PAVEMENT
HD	HEAVY-DUTY PAVEMENT
CON	CONCRETE
LAND	LANDSCAPE
FL	FIRST FLOOR ELEVATION
USF	UNDERSIDE OF FOOTING



REFER TO NOTES & DETAILS ON DRAWINGS C-3, C-4 & C-5



No.	DATE	REVISION
3	MAY 13-20	RE-ISSUED FOR APPROVAL
2	FEB 13-20	ISSUED FOR APPROVAL
1	FEB 11-20	ISSUED FOR COORDINATION

**D. B. GRAY ENGINEERING INC.**  
 700 Long Point Circle  
 Ottawa, Ontario  
 613-425-8044  
 dgray@dbgrayengineering.com

**PROPOSED**  
**1 STOREY**  
**INDUSTRIAL WAREHOUSE**  
**1243 TERON ROAD**  
**OTTAWA, ONTARIO**

**SITE SERVICING PLAN**  
**&**  
**GRADING PLAN**

Engineer's Seal  
**PROFESSIONAL ENGINEER**  
**D.B. GRAY**  
 17016502  
 REG. NO. OF  
**ONTO.**

Drawn: D.B.G.  
 Hor. Scale 1:400  
 Vert. Scale  
 Date OCT 18-19  
 Job No. 19057  
 Drawing No. **C-1**  
 of **6**  
 NOT VALID UNLESS  
 SIGNED & DATED