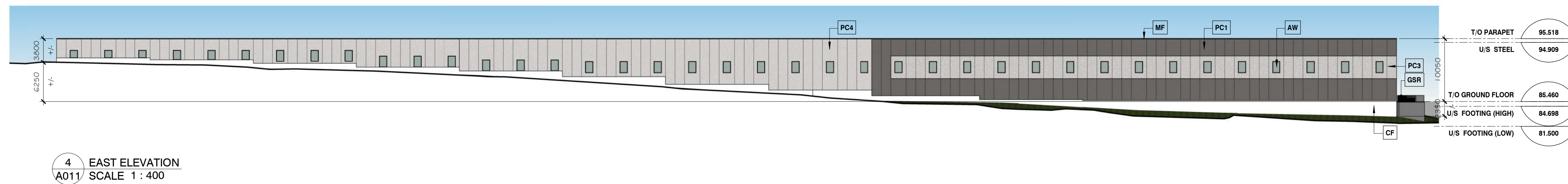
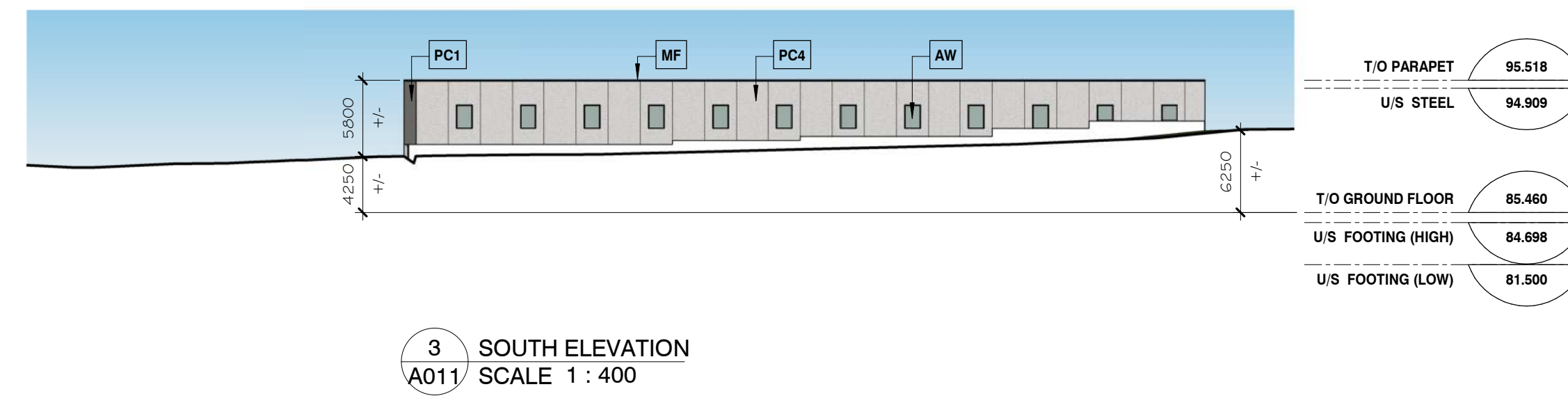
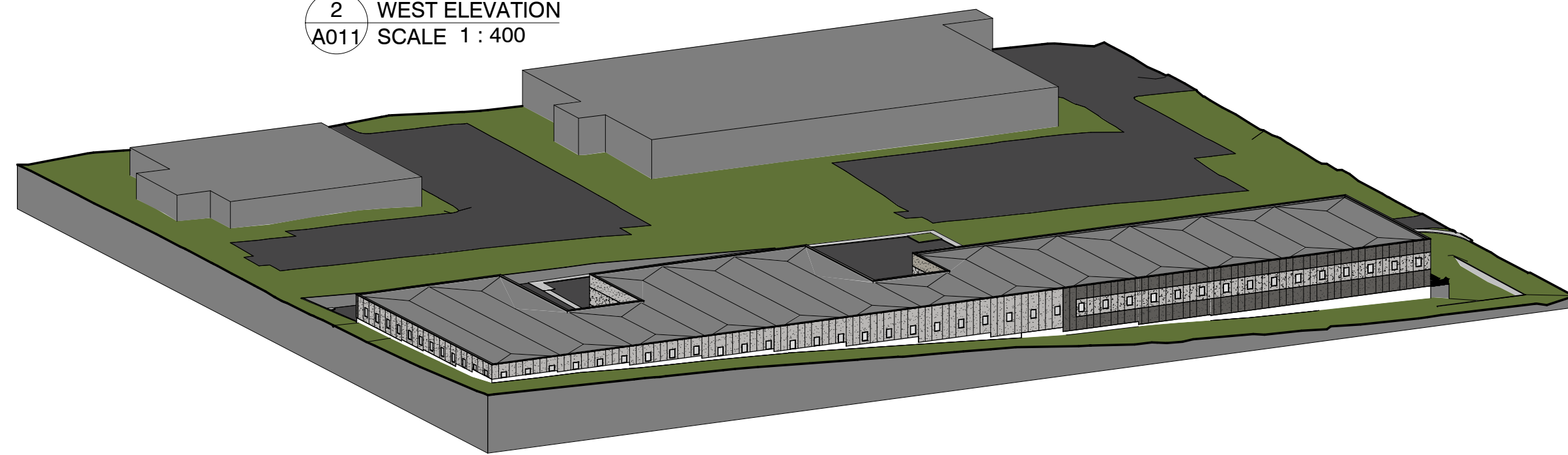
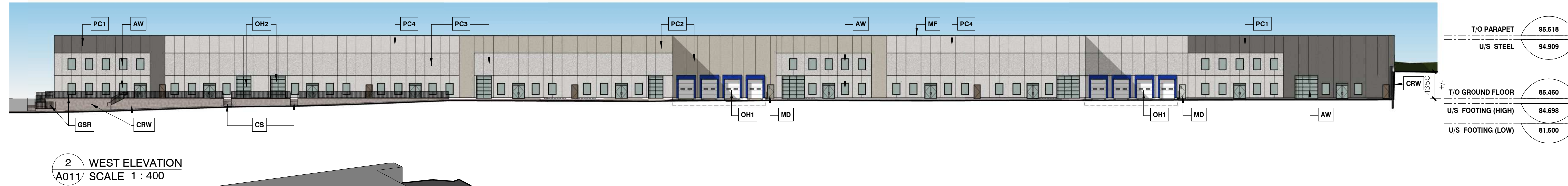
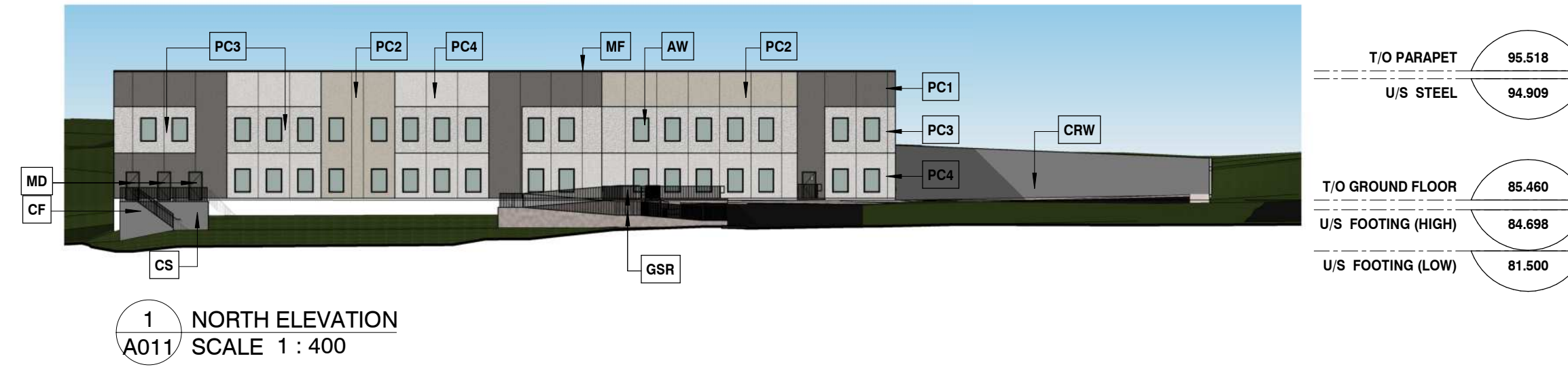
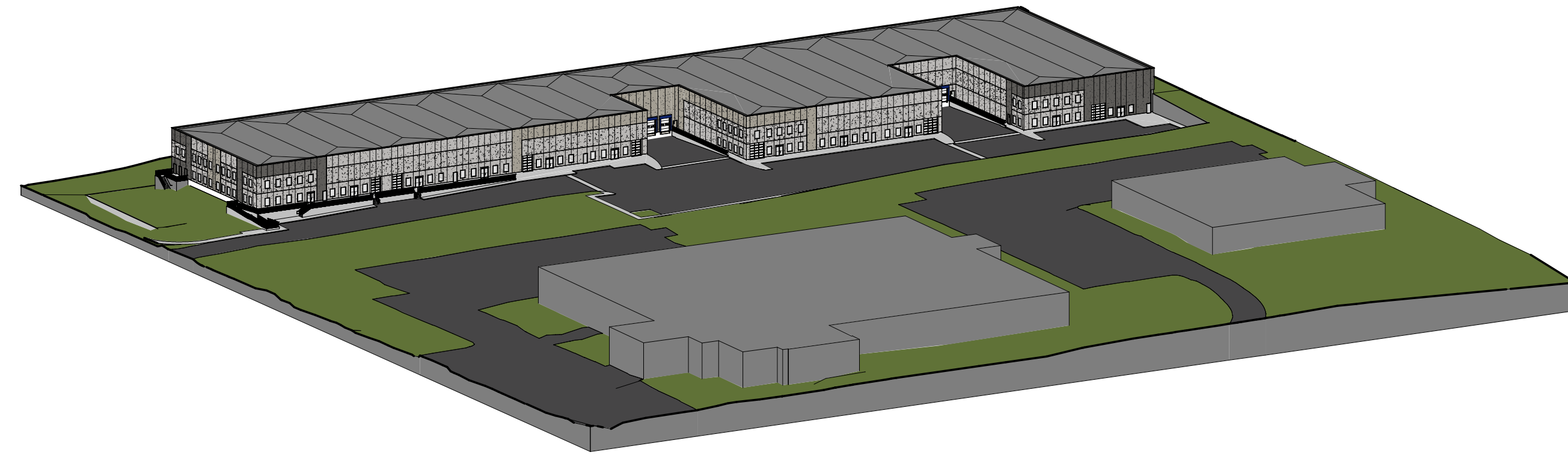


I:\OneDrive\Revit\1943 MECHA 1243 Teron Rd\1943 - 1243 Teron Rd.rvt

PLOT SCALE: 1:1

PLOT DATE: 2020-10-09 6:32:12 PM

SHEET SIZE: ARCH D 24" x 36" (610.00 x 914.00mm)



ELEVATION NOTES	
Note #	Note Text
AW	Clear Anodized Aluminum Window, with Clear Glass
CF	Concrete Foundation Wall
CRW	Concrete Retaining Wall
CS	Concrete Stair
GSR	Galvanized Steel Guardrail
MD	Painted Hollow-Metal Door & Steel Frame, colour matching adjacent siding colour
MF	Prefinished Metal Parapet Cap Flashing, dark grey colour
OH1	Solid, Prefinished, Insulated Overhead Door, complete weather seal, dock bumper and dock leveler
OH2	Glazed Overhead Door in Clear Anodized Aluminum Frame
PC1	Precast Concrete, Light Sandblast Finish, stained charcoal
PC2	Precast Concrete, Light Sandblast Finish, stained stone grey
PC3	Precast Concrete, Heavy Sandblast Finish, natural grey
PC4	Precast Concrete, Light Sandblast Finish, natural grey

APPROVED REFUSED

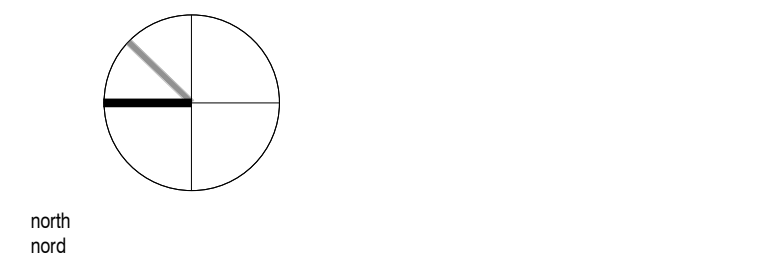
THIS _02_ DAY OF December, 2020

Erin O'Connell

ERIN O'CONNELL, MCIP, RPP, MANAGER (A)
DEVELOPMENT REVIEW, WEST
PLANNING, INFRASTRUCTURE AND ECONOMIC
DEVELOPMENT DEPARTMENT, CITY OF OTTAWA

NOTES
Contractor shall check and verify all dimensions on site and report any discrepancies to the Architect before proceeding.

no.	revision	date
3	Issued for Final Site Plan Approval	19 Nov 2020
2	Response to Planning Comments	20 Jul 2020
1	Response to Planning Comments	13 May 2020
0	Issued for Site Plan Approval	13 Feb 2020



383 Parkdale Avenue, Suite 201
Ottawa, Ontario, Canada, K1Y 4R4

KWC ARCHITECTS INC.

Phone: 613 238-2217
Fax: 613 238-6595
E-Mail: kwc@kwc-arch.com

detail no. 1 no. de détail
sheet no. A101 no. de la feuille

PROPOSED WAREHOUSE

1265 TERON RD., OTTAWA, ONTARIO

designed by / conçu par **KWC** approved by / approuvé par

drawn by / dessiné par **AL** project no. / no. du projet **1943**

date **30 NOVEMBRE 2020** scale **as noted**

**BUILDING ELEVATIONS
(SITE PLAN APPROVAL)**

revision **3** sheet no. / no. de la feuille **A011**
#18115

D07-15-20-0017