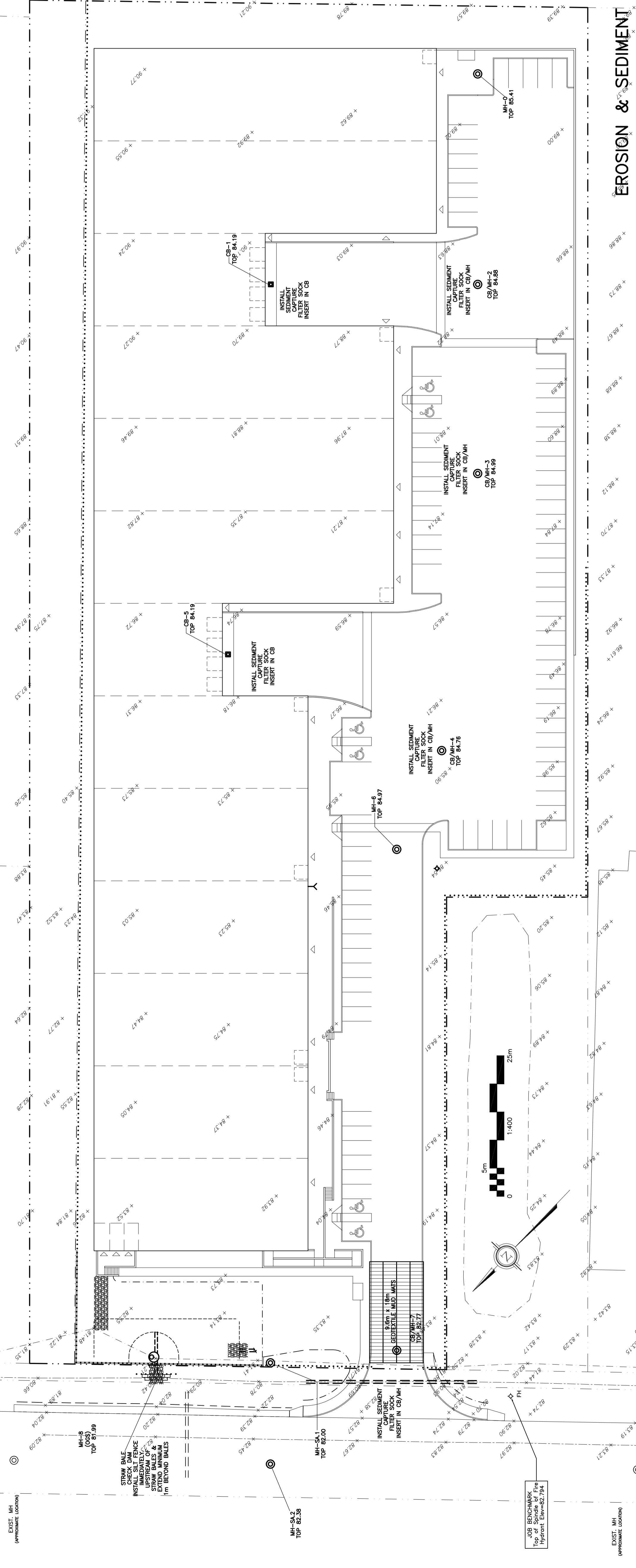
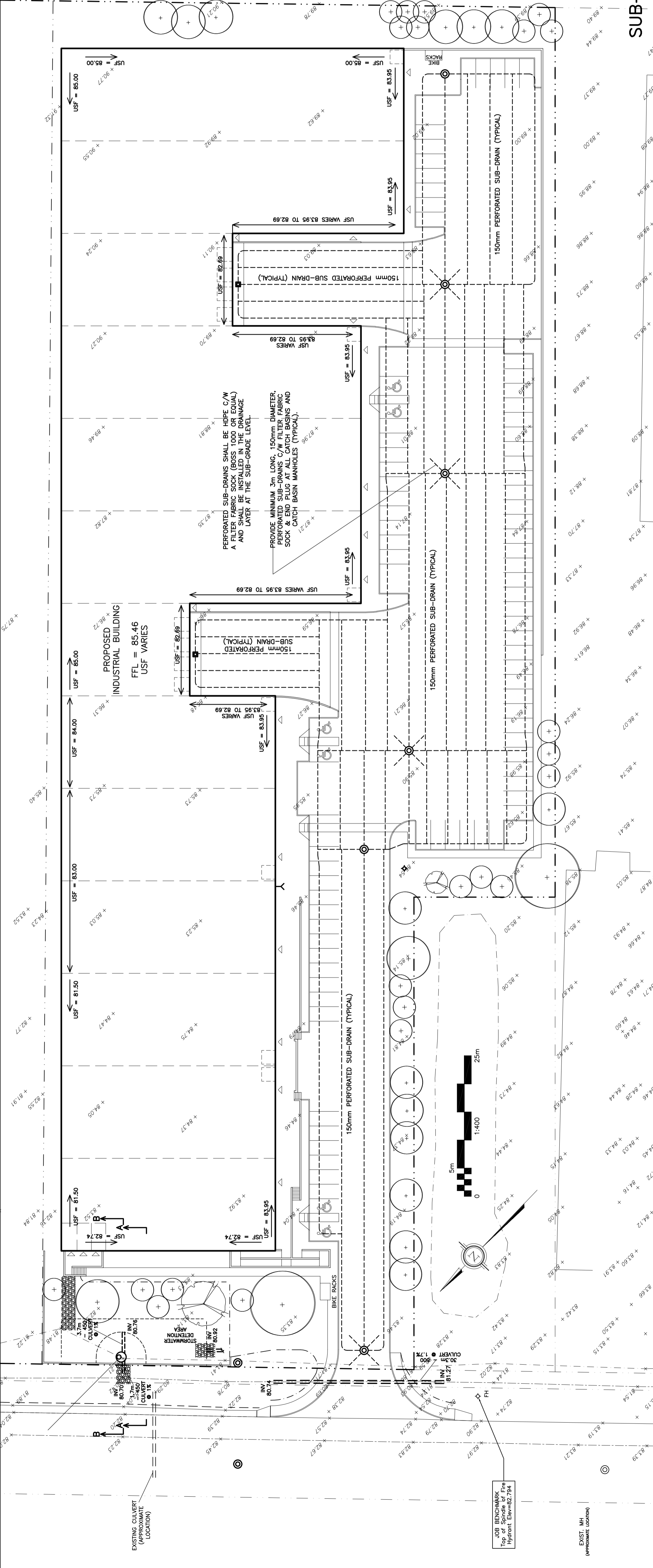


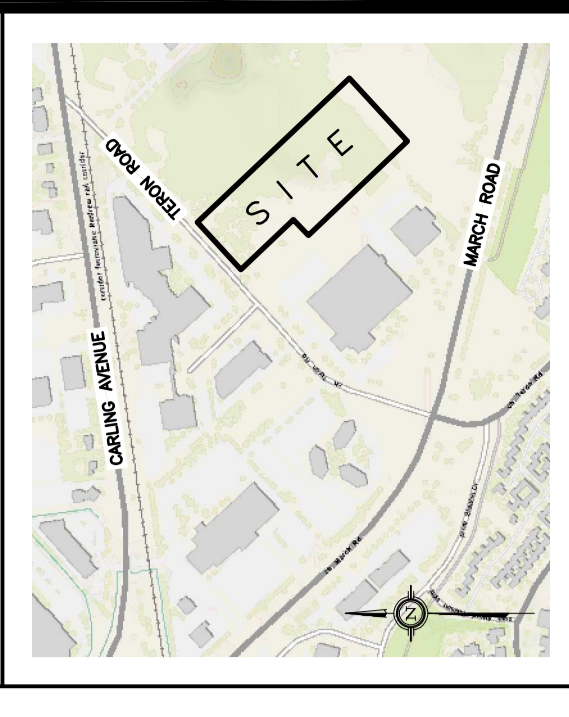
REFER TO
NOTES &
DETAILS ON
DRAWINGS
C-3, C-4
& C-5



REFER TO
NOTES &
DETAILS ON
DRAWINGS
C-3, C-4
& C-5



KEY PLAN



No.	DATE	REVISION
3	MAY 13-20	RE-ISSUED FOR APPROVAL
2	FEB 13-20	ISSUED FOR APPROVAL
1	FEB 11-20	ISSUED FOR COORDINATION

D. B. GRAY ENGINEERING INC.
 Stormwater Management - Grading & Drainage - Storm & Sanitary Sewers - Erosion Control
 700 Long Point Circle
 Ottawa, Ontario
 613-425-8044
 dgray@dbgrayengineering.com

**PROPOSED
1 STOREY
INDUSTRIAL WAREHOUSE
1243 TERON ROAD
OTTAWA, ONTARIO**

**EROSION & SEDIMENT
CONTROL PLAN
AND SUB-DRAIN LAYOUT**

Engineer's Seal
PROFESSIONAL ENGINEER
 D.B. GRAY
 17016502
 MAY 13-20
 NOT VALID UNLESS
 SIGNED & DATED