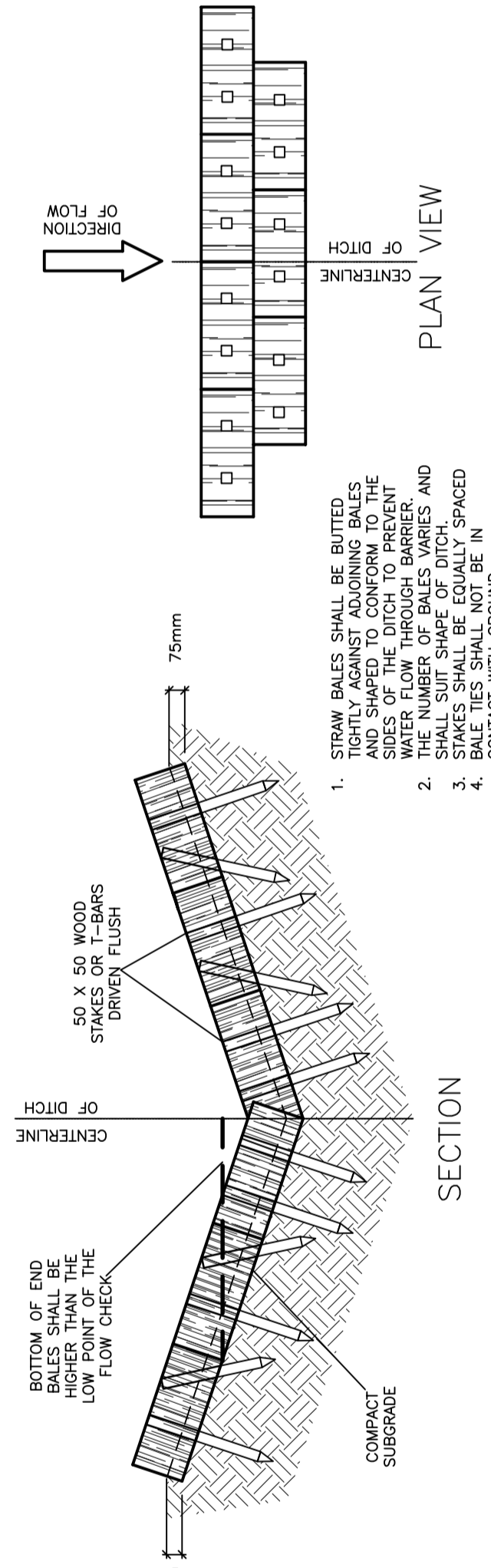
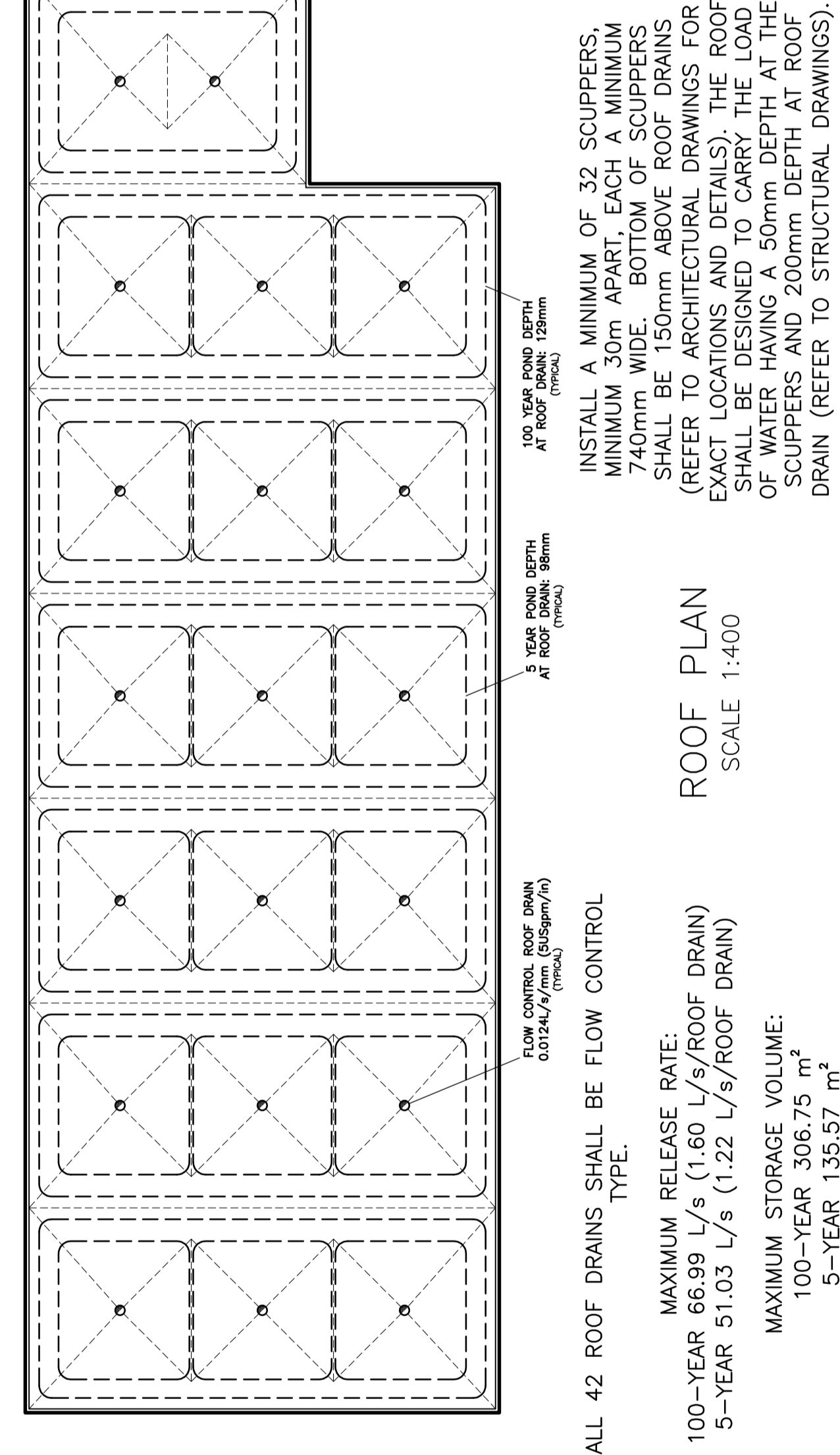


**SECTION (FROZEN GROUND)**  
**SECTION**  
 (MODIFIED FOR FROZEN GROUND)  
 N.T.S.

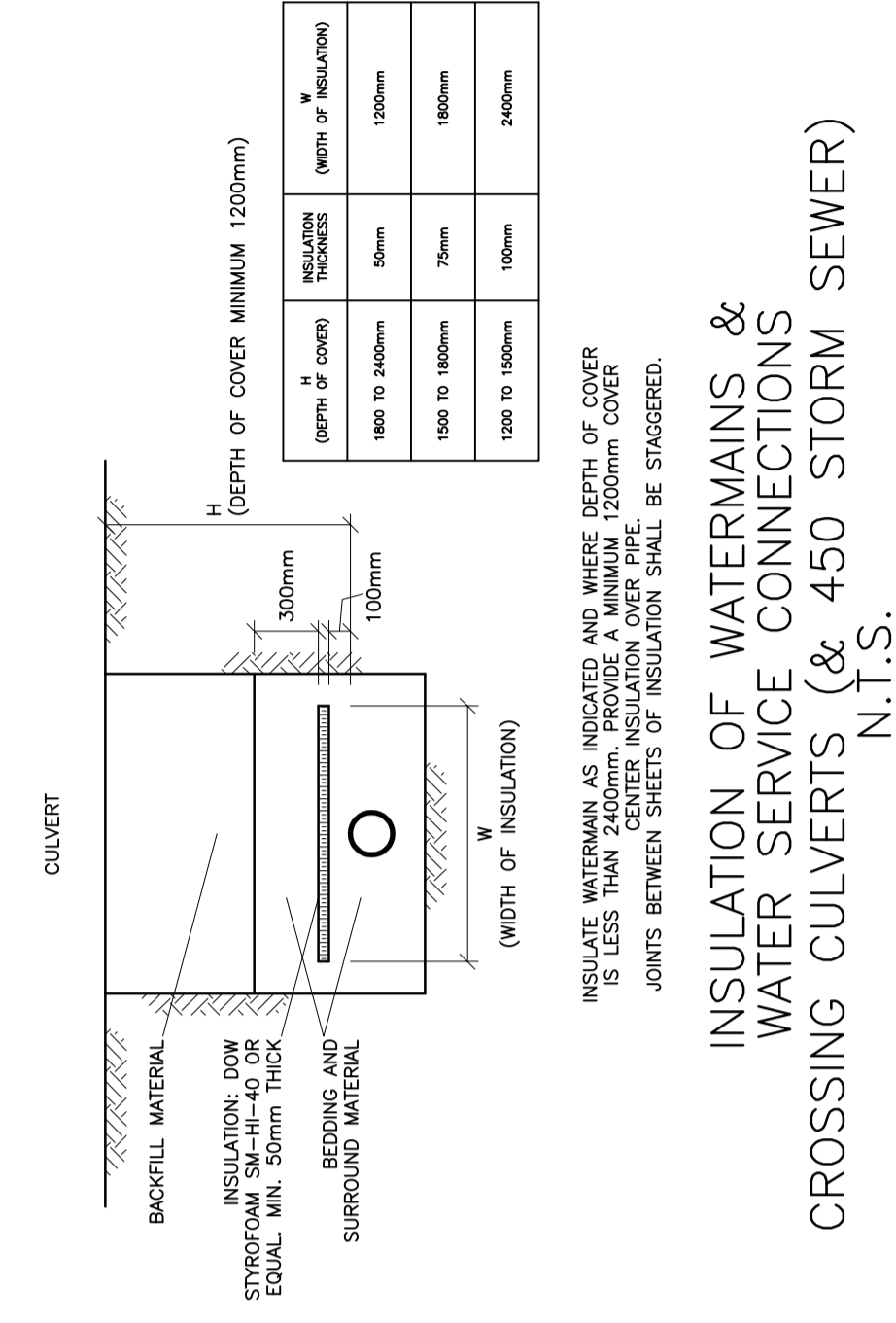
**SILT FENCE BARRIER**  
 AS PER OPSD 219.110  
 (MODIFIED FOR FROZEN GROUND)  
 N.T.S.



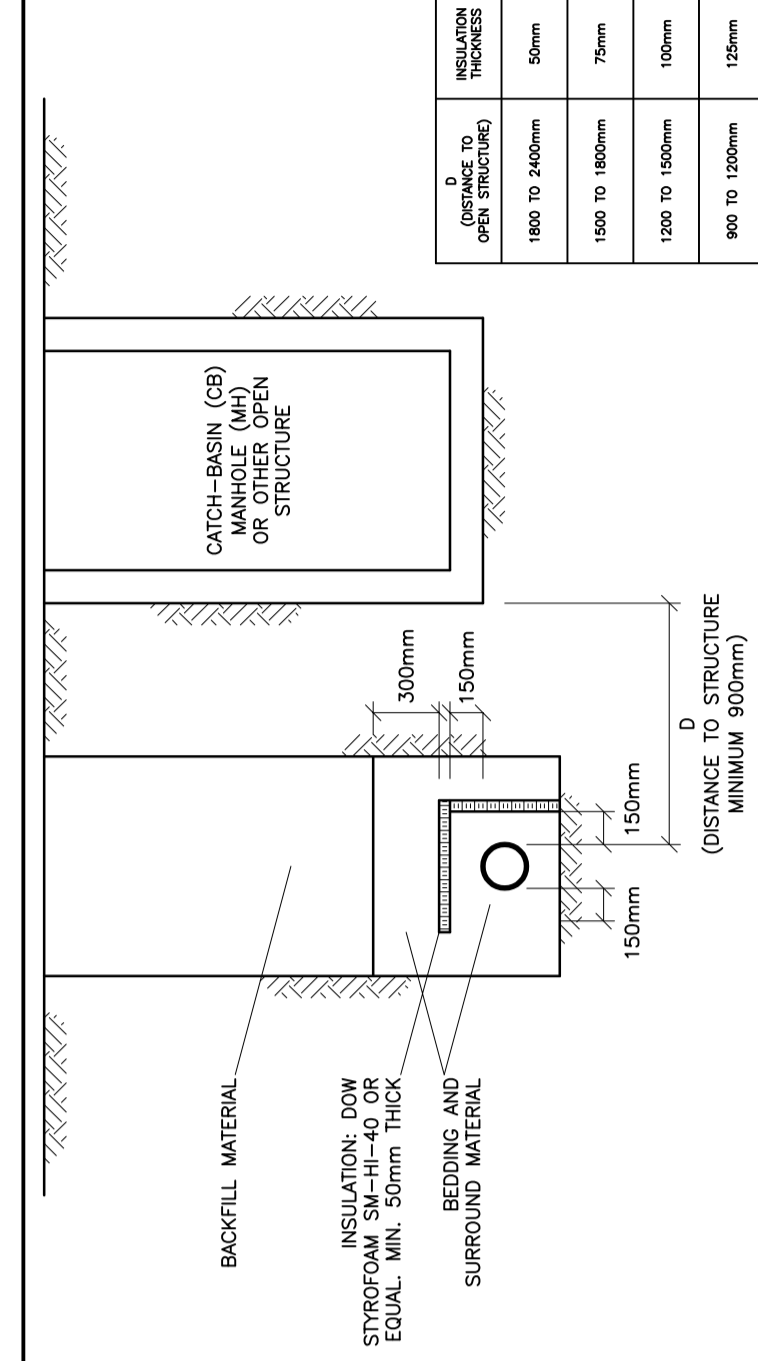
**SECTION**  
**PLAN VIEW**  
 STRAW BALE FLOW CHECK DAM  
 AS PER OPSD 219.180  
 N.T.S.



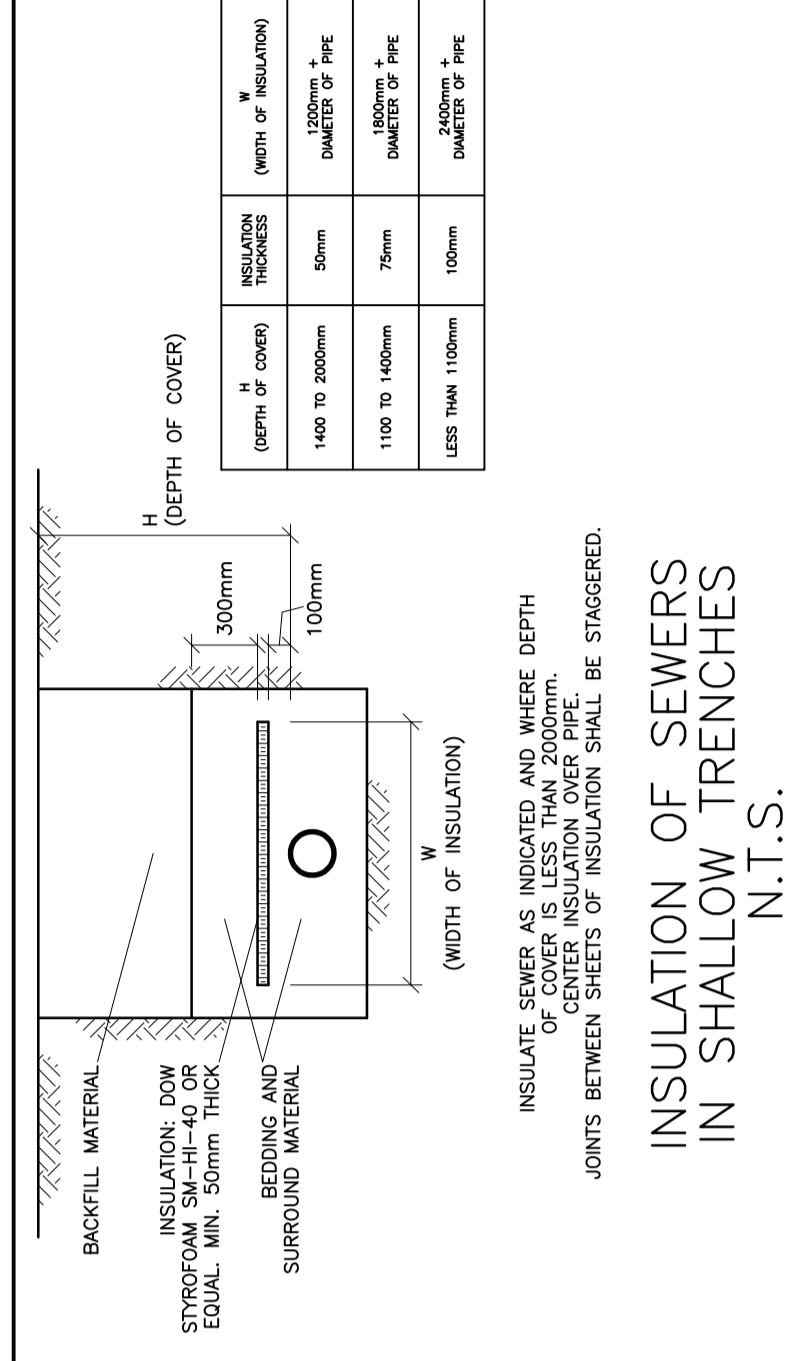
**ROOF PLAN**  
 SCALE 1:400



**INSULATION OF WATERMANS & WATER SERVICE CONNECTIONS CROSSING CULVERTS (& 450 STORM SEWER) N.T.S.**



**INSULATION OF WATERMANS & WATER SERVICE CONNECTIONS AT OPEN STRUCTURES AS PER CITY OF OTTAWA DRAWING NO. W23 N.T.S.**



**INSULATION OF SEWERS IN SHALLOW TRENCHES N.T.S.**



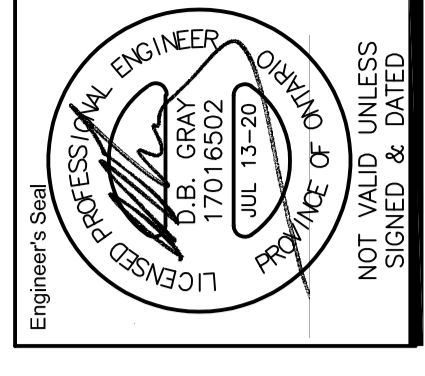
**KEY PLAN**

No.	DATE	REVISION
4	JUL 13-20	RE-ISSUED FOR APPROVAL
3	MAY 11-20	RE-ISSUED FOR APPROVAL
2	FEB 13-20	ISSUED FOR APPROVAL
1	FEB 11-20	ISSUED FOR COORDINATION

**D. B. GRAY ENGINEERING INC.**  
 Structural Management - Consulting & Design - Storm & Sanitary Sewers - Stormwater  
 700 Long Point Circle  
 Ottawa, Ontario  
 613-425-8044  
 dgray@dbgrayengineering.com

**PROPOSED 1 STOREY INDUSTRIAL WAREHOUSE**  
 1243 TERON ROAD  
 OTTAWA, ONTARIO

**DETAILS**  
 Drawing Title



Drawn: D.B.G.  
 Hor. Scale  
 Vert. Scale  
 Date: OCT 18-19  
 Job No.: 19057  
 Drawing No.: C-3 of 6  
 NOT VALID UNLESS SIGNED & DATED