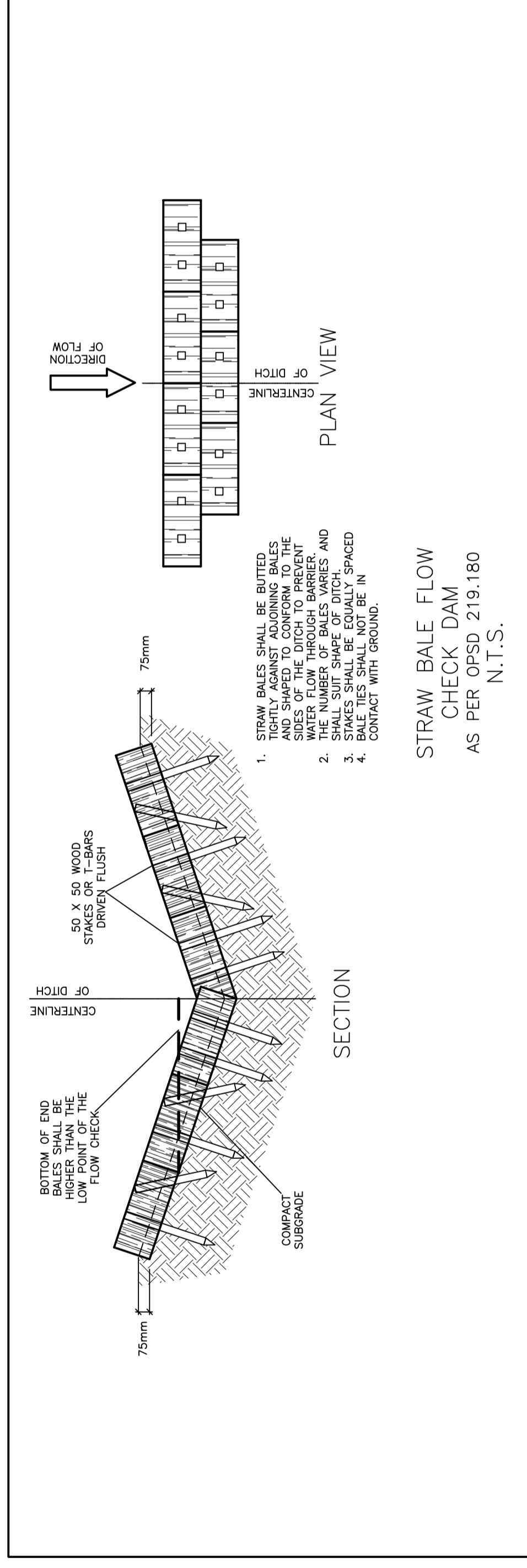
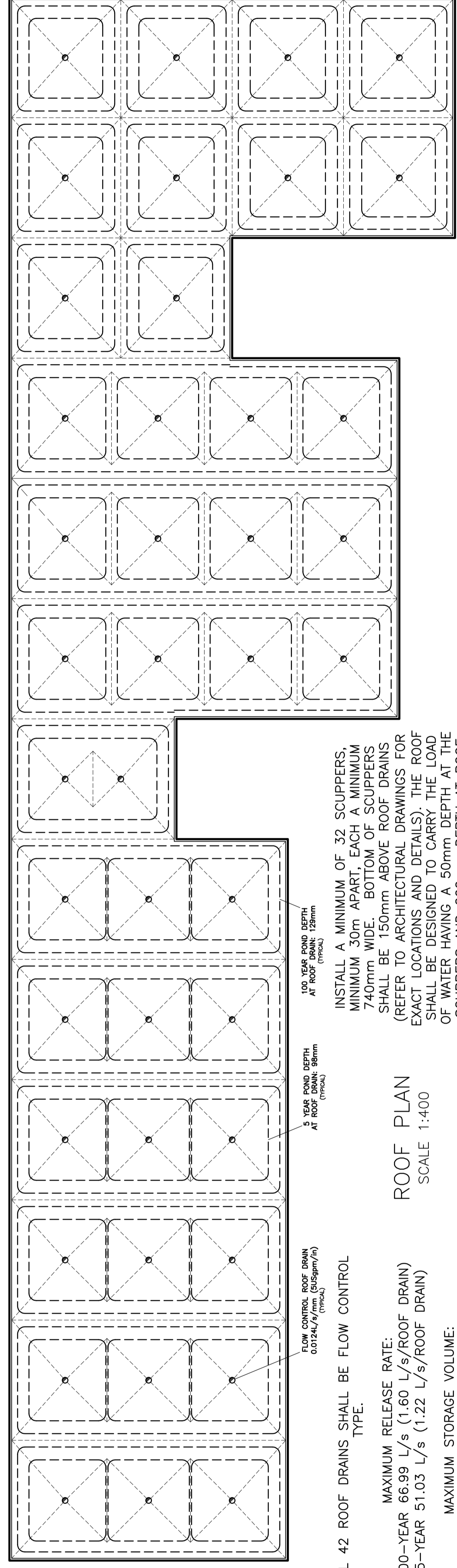


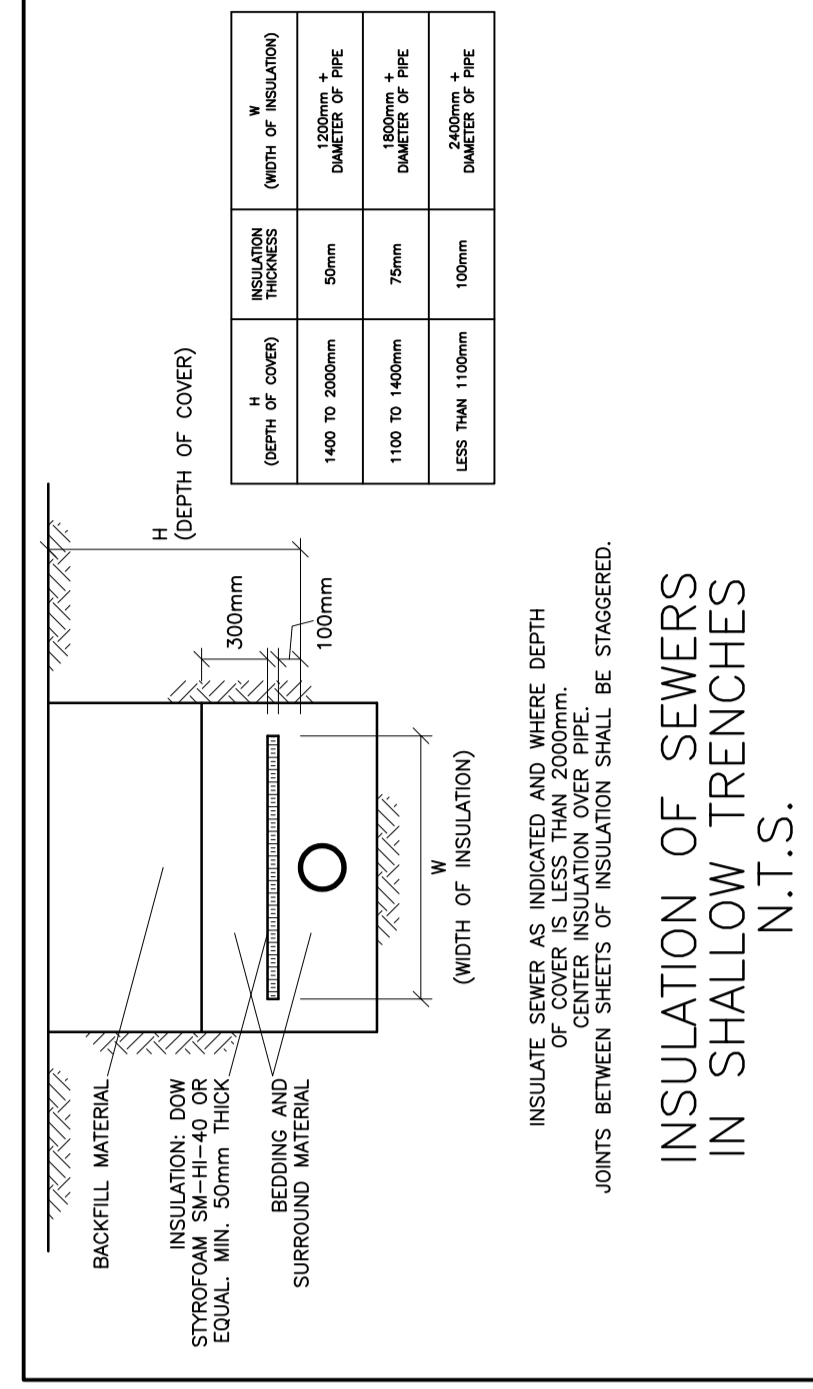
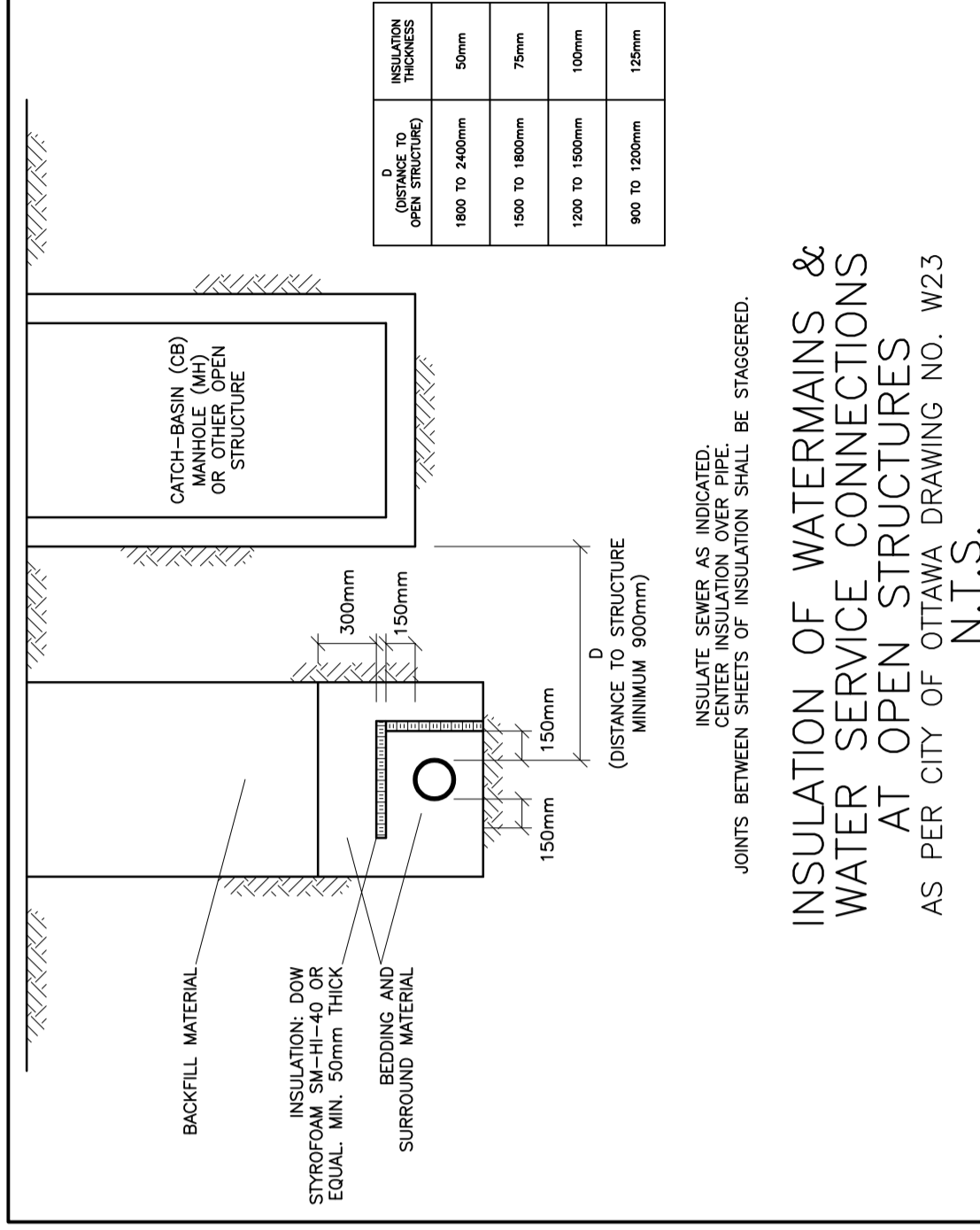
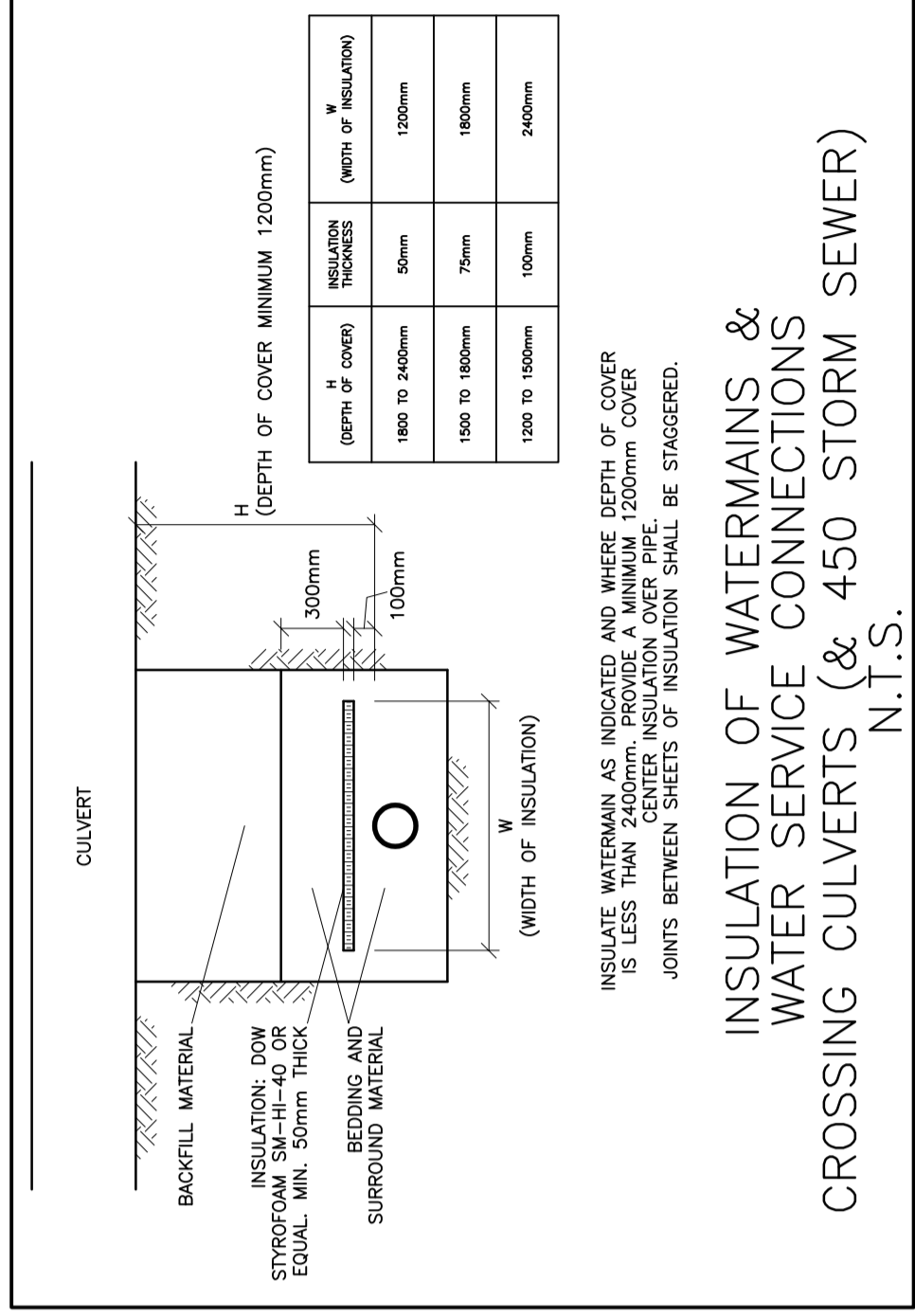
SILT FENCE BARRIER
AS PER OPSD 219.110
(MODIFIED FOR FROZEN GROUND)
N.T.S.



ALL 42 ROOF DRAINS SHALL BE FLOW CONTROL TYPE.
MAXIMUM RELEASE RATE:
100-YEAR 66.99 L/s (1.60 L/s/ROOF DRAIN)
5-YEAR 51.03 L/s (1.22 L/s/ROOF DRAIN)
MAXIMUM STORAGE VOLUME:
100-YEAR 306.75 m³
5-YEAR 135.57 m³



INSTALL A MINIMUM OF 32 SCUPPERS, MINIMUM 30m APART, EACH A MINIMUM 740mm WIDE. BOTTOM OF SCUPPERS SHALL BE 150mm ABOVE ROOF DRAINS (REFER TO ARCHITECTURAL DRAWINGS FOR EXACT LOCATIONS AND DETAILS). THE ROOF SHALL BE DESIGNED TO CARRY THE LOAD OF WATER HAVING A 50mm DEPTH AT THE SCUPPERS AND 200mm DEPTH AT ROOF DRAIN (REFER TO STRUCTURAL DRAWINGS).



No.	DATE	REVISION
4	JUL 13-20	RE-ISSUED FOR APPROVAL
3	MAY 11-20	RE-ISSUED FOR APPROVAL
2	FEB 13-20	ISSUED FOR APPROVAL
1	FEB 11-20	ISSUED FOR COORDINATION

D. B. GRAY ENGINEERING INC.
700 Long Point Circle
Ottawa, Ontario
613-425-8044
dgray@dbgrayengineering.com

PROPOSED 1 STOREY INDUSTRIAL WAREHOUSE
1243 TERON ROAD
OTTAWA, ONTARIO

DETAILS

Engineer's Seal
D.B. GRAY
17016502
JUL 13-20
REGISTERED PROFESSIONAL ENGINEER

Drawn: D.B.G.
Hor. Scale
Vert. Scale
Date: OCT 18-19
Job No.: 19057
Drawing No.: C-3 of 6
NOT VALID UNLESS SIGNED & DATED