

METRIC
DISTANCES AND COORDINATES SHOWN ON THIS PLAN ARE IN METRES
AND CAN BE CONVERTED TO FEET BY DIVIDING BY 0.3048

AREA (Ha.)	SCHEDULE		
	PART	LOT	CONCESSION
1.98	1	PART OF 5	4
0.218	2		

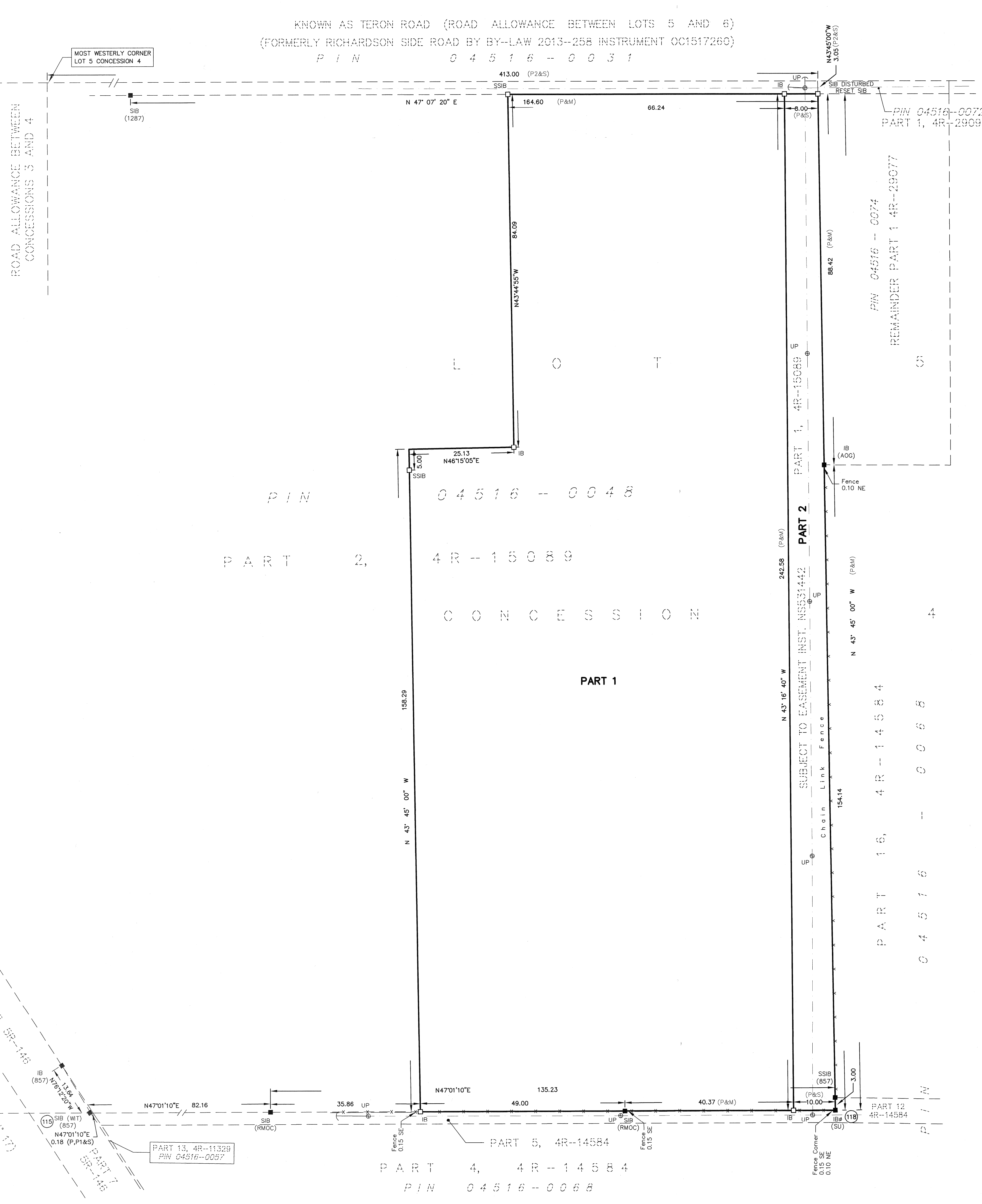
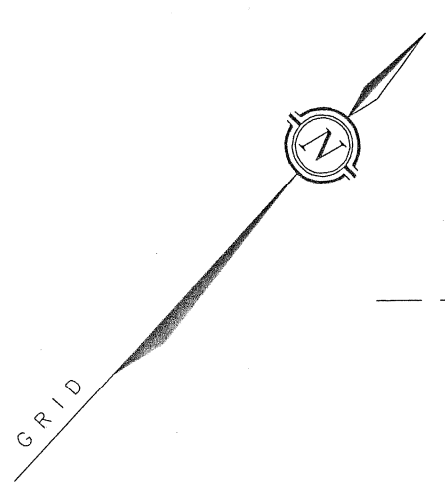
PIN 04516-0048

I REQUIRE THIS PLAN TO BE DEPOSITED UNDER THE LAND TITLES ACT.

DATE 2020/02/25

PLAN 4R-32693
RECEIVED AND DEPOSITED
DATE Feb 26, 2020
Guy Noel Wkumina
REPRESENTATIVE FOR
LAND REGISTRAR FOR THE
LAND TITLES DIVISION OF
OTTAWA - CARLETON (N° 4)

JOHN H. GUTRI, O.L.S.



**PLAN OF SURVEY OF
PART OF LOT 5
CONCESSION 4
GEOGRAPHIC TOWNSHIP OF MARCH
CITY OF OTTAWA**

SCALE 1 : 500

FAIRHALL, MOFFATT & WOODLAND LIMITED
ONTARIO LAND SURVEYORS

COORDINATES WERE DERIVED FROM PLAN 4R-15089 AND ARE MTM ZONE 9, NAD83 ORIGINAL.

COORDINATES HAVE BEEN DETERMINED TO AN URBAN ACCURACY IN ACCORDANCE WITH SECTION 14(2) OF O.REG 216/10.

POINT ID	NORTHING	EASTING
115	5022147.119	351682.152
118	5022295.448	351841.315

COORDINATES CANNOT IN THEMSELVES BE USED TO RE-ESTABLISH CORNERS OR BOUNDARIES SHOWN ON THIS PLAN.

NOTES

- BEARINGS ARE GRID, DERIVED FROM THE SOUTHERLY LIMIT OF TERON ROAD SHOWN ON PLAN 4R-15089 AS HAVING A BEARING OF N47°07'20"E AND ARE REFERRED TO THE CENTRAL MERIDIAN 76° 30' W LONGITUDE, MTM ZONE 9 (NAD 83).
- DISTANCES ARE GROUND AND CAN BE CONVERTED TO GRID BY MULTIPLYING BY THE COMBINED SCALE FACTOR 0.999916.

- LEGEND**
- - SURVEY MONUMENT SET
 - - SURVEY MONUMENT FOUND
 - IB - IRON BAR
 - SIB - STANDARD IRON BAR
 - SSIB - SHORT STANDARD IRON BAR
 - ⊙ - ROUND
 - (P) - PLAN 4R-15089
 - (P1) - PLAN 4R-14584
 - (P2) - PLAN 4R-23094
 - (S) - SET
 - (M) - MEASURED
 - (857) - FAIRHALL, MOFFATT & WOODLAND LIMITED, O.L.S.
 - (1287) - FARLEY, SMITH & MURRAY SURVEYING LTD., O.L.S.
 - (AOG) - ANNIS, O'SULLIVAN, VOLLEBEKK LIMITED, O.L.S.
 - (RMOC) - REGIONAL MUNICIPALITY OF OTTAWA-CARLETON
 - (NCC) - NATIONAL CAPITAL COMMISSION
 - (MTO) - MINISTRY OF TRANSPORTATION OF ONTARIO
 - (SU) - SOURCE UNKNOWN
 - NT - NOT TANGENTIAL
 - N - NORTH
 - SE - SOUTHEAST
 - NE - NORTHEAST
 - NW - NORTHWEST
 - - - OVERHEAD UTILITY WIRES
 - ⊥ - GUY WIRE & ANCHOR

SURVEYOR'S CERTIFICATE

I CERTIFY THAT:

- THIS SURVEY AND PLAN ARE CORRECT AND IN ACCORDANCE WITH THE SURVEYS ACT, THE SURVEYORS ACT, THE LAND TITLES ACT AND THE REGULATIONS MADE UNDER THEM.
- THE SURVEY WAS COMPLETED ON FEBRUARY 13, 2020.

2020/02/25
DATE

JOHN H. GUTRI
ONTARIO LAND SURVEYOR

**Fairhall
Moffatt &
Woodland**
LIMITED
OTTAWA

Surveying and Land Information Services
100-600 TERRY FOX DRIVE, KANATA, ONTARIO K2L 4B6
TEL: (613) 591-2580 FAX: (613) 591-1495
www.fmw.on.ca

JOB No. Z24800
E 351631, N 5021902
REFERENCE No. 210 - 4 MARCH
S1:\085\224800\DWG\z248_rp.dwg (kg)