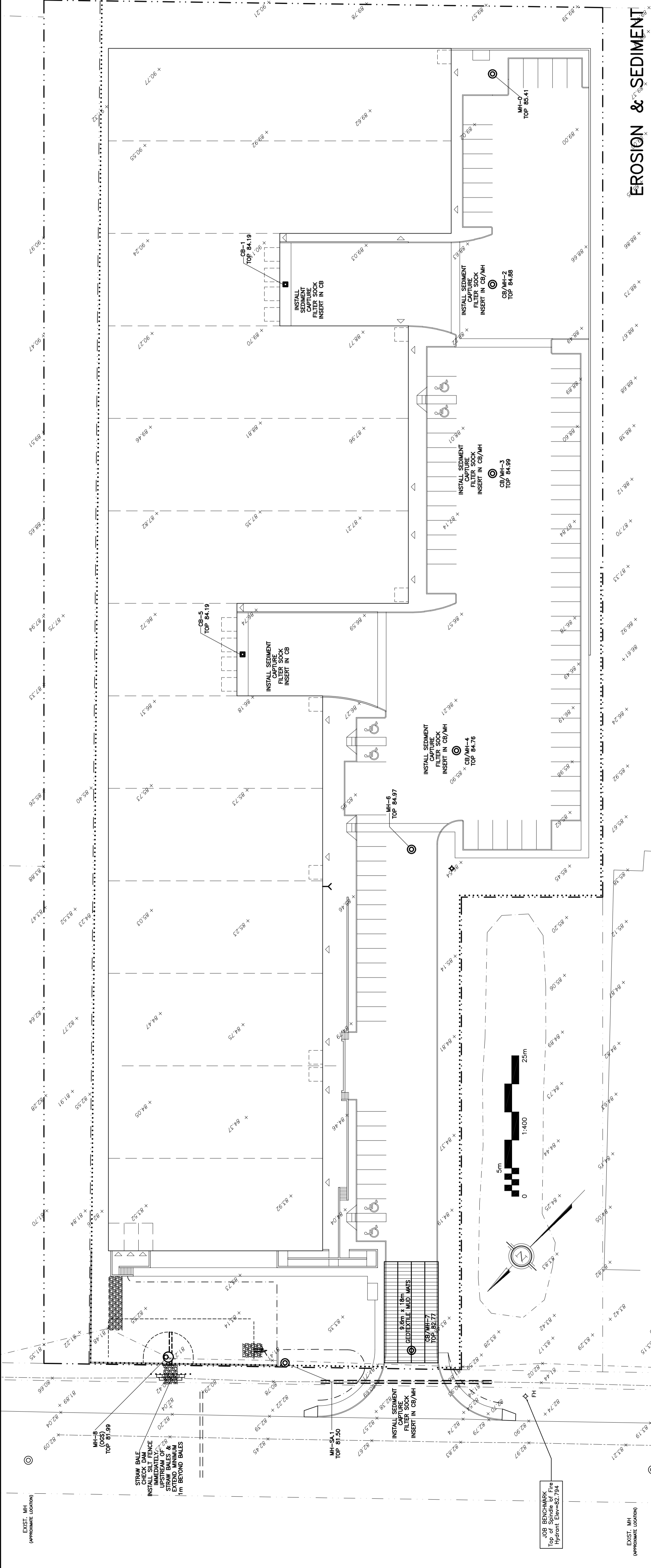
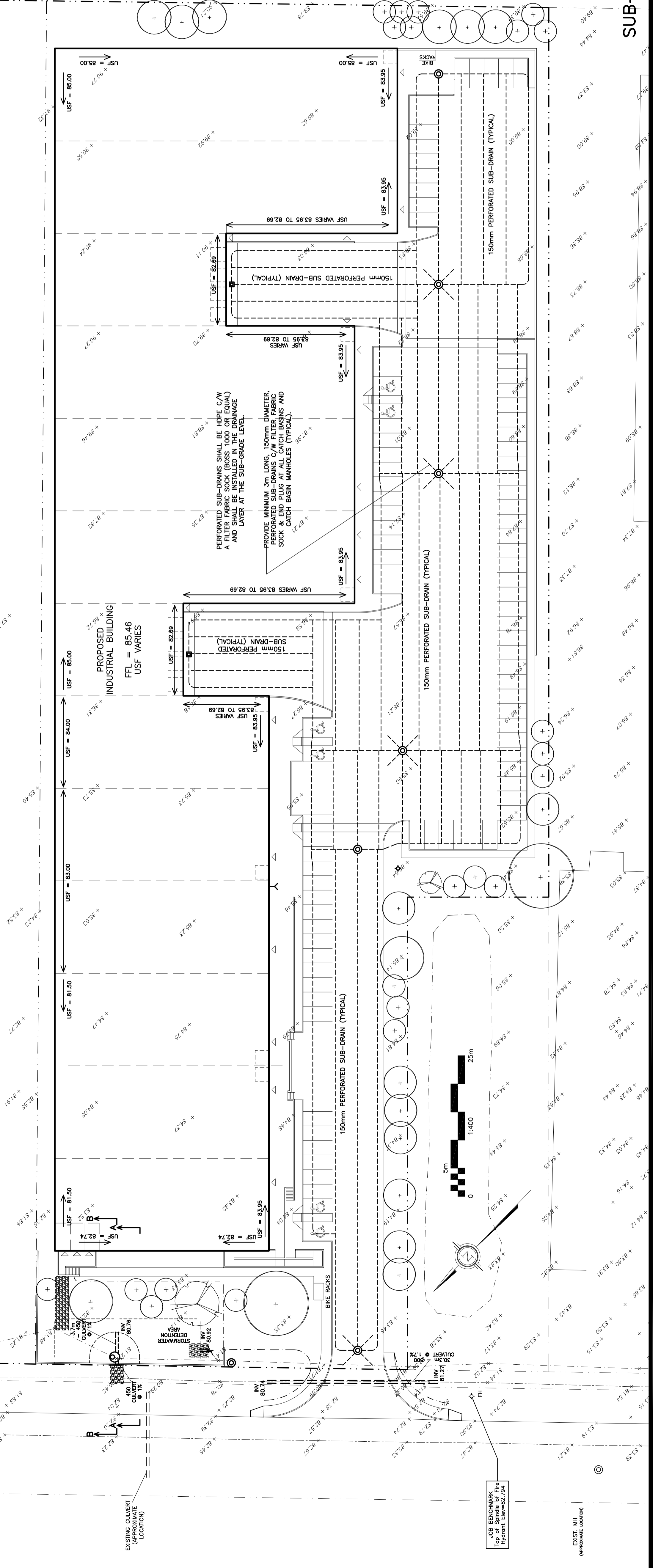


REFER TO
NOTES &
DETAILS ON
DRAWINGS
C-3, C-4
& C-5



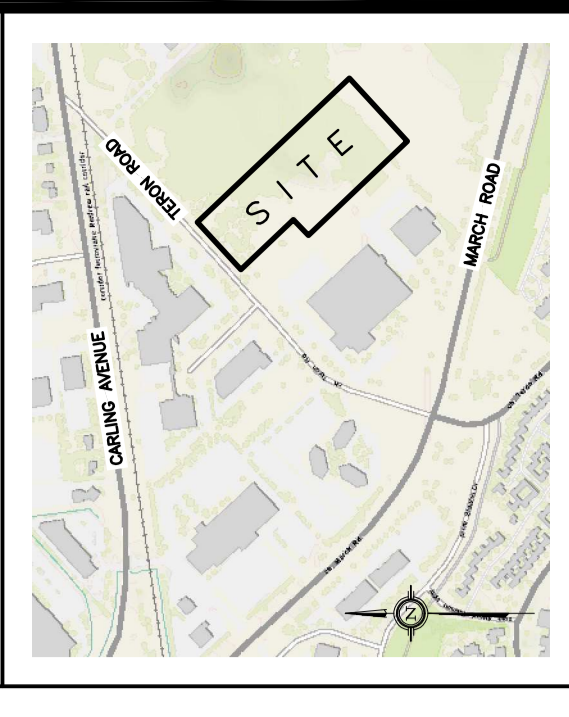
EROSION & SEDIMENT CONTROL PLAN

REFER TO
NOTES &
DETAILS ON
DRAWINGS
C-3, C-4
& C-5



SUB-DRAIN LAYOUT

KEY PLAN



No.	DATE	REVISION
5	SEP 1-20	RE-ISSUED FOR APPROVAL
4	JUL 13-20	RE-ISSUED FOR APPROVAL
3	MAY 13-20	RE-ISSUED FOR APPROVAL
2	FEB 13-20	ISSUED FOR APPROVAL
1	FEB 11-20	ISSUED FOR COORDINATION

D. B. GRAY ENGINEERING INC.
 Stormwater Management - Consulting & Design - Storm & Sanitary Sewers - Erosion
 700 Long Point Circle
 Ottawa, Ontario
 613-425-8044
 dgray@dbgrayengineering.com

**PROPOSED
1 STOREY
INDUSTRIAL WAREHOUSE
1243 TERON ROAD
OTTAWA, ONTARIO**

**EROSION & SEDIMENT
CONTROL PLAN
AND SUB-DRAIN LAYOUT**

Engineer's Seal

 Drawing No. **C-2**
 of **6**
 NOT VALID UNLESS
 SIGNED & DATED