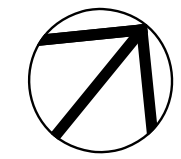
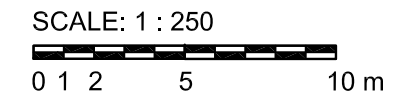


ISSUED TO PLANNING DEPARTMENT
06 JUNE 2022



TRUE NORTH



SURVEY INFORMATION TAKEN FROM SURVEY PREPARED BY STANTEC GEOMATICS LTD., DATED FEBRUARY 19, 2019, PROJECT NO. 161614177-III.

PARKING REQUIRED:	
MEDICAL SPACE:	4.0 / 100 m ² of GFA 1,586 X 4.0 / 100 m ² = 64 SPACES
RETAIL STORE (PHARMACY):	3.4 / 100 m ² of GFA 112 X 3.4 / 100 m ² = 4 SPACES
TOTAL PARKING REQUIRED:	68 SPACES
TOTAL PARKING PROVIDED:	70 SPACES

WASTE MANAGEMENT

EXTERNAL ENCLOSURE
2 FEL BINS ON PRIVATE

APPROVED
By Wendy Tse at 7:42 am, Jun 26, 2022

CLIENT LOGO:

Kristopher D. Benes, OAA, MRAIC, LEED AP

OPA open plan architects inc.
architecture | interiors | concepts

2305 HILLARY AVE. | OTTAWA | ON | K1H 7J2
613.883.5090 | info@openplan.ca

PROJECT NAME:
PANORAMA WELLNESS CENTRE, 1380 UPPER CANADA STREET, WASTE ENCLOSURE

DRAWING TITLE:
New Exterior Waste Enclosure - Part Site Plan

DRAWN BY:	KDB	CHECKED BY:	KDB
DATE:	13 APR. 2022	PROJECT No.:	2002
SCALE:	1 : 250		
DRAWING NO.		ASK-A02.1	