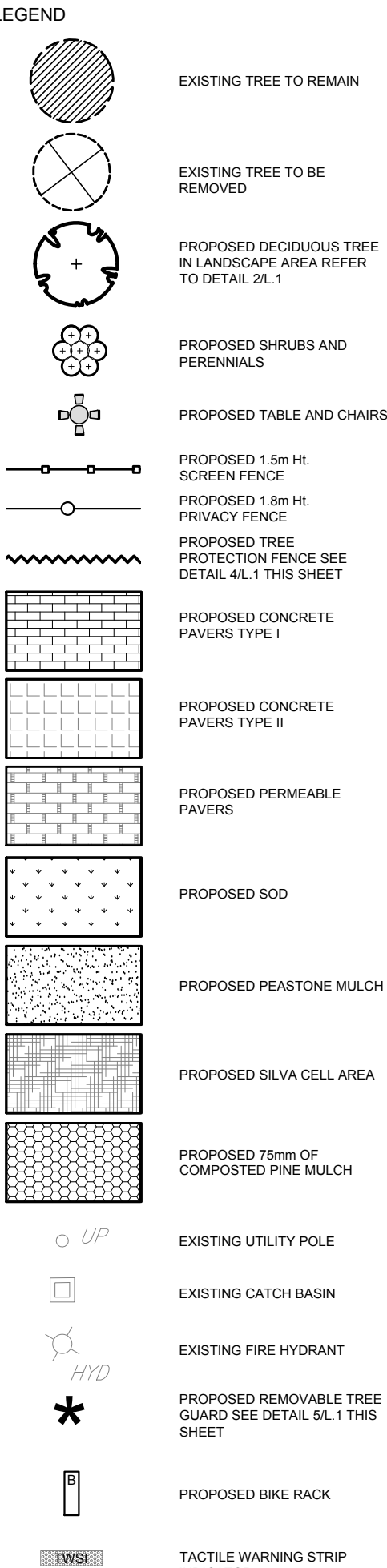


PROPOSED PLANT LIST

KEY	QTY	BOTANICAL NAME	COMMON NAME	SIZE	CONDITION	REMARKS
TREES						
AM	2	Acer ginnala	Amur Maple	60mm ø	B&B	
Hb	1	Celtis occidentalis	Hackberry	60mm ø	B&B	
GB	5	Ginkgo biloba	Maclure Tree	60mm ø	B&B	Male tree
SK	2	Quercus macrocarpa var. imbricifolia	Street Keeper Honeylocust	60mm ø	B&B	
SHRUBS						
SS	7	Sorbaria sorbifolia 'Sem'	Sem False Spirea	600mm HT.	Potted	Space 1000mm O.C.
ORNAMENTAL GRASSES AND PERENNIALS						
KF	48	Calamagrostis x acutiflora 'Karl Foerster'	Feather Reed Grass	250mm pot	Potted	Space 800mm O.C.
LA	64	Leymus arenarius	Blue Lyne Grass	250mm pot	Potted	Space 800mm O.C.



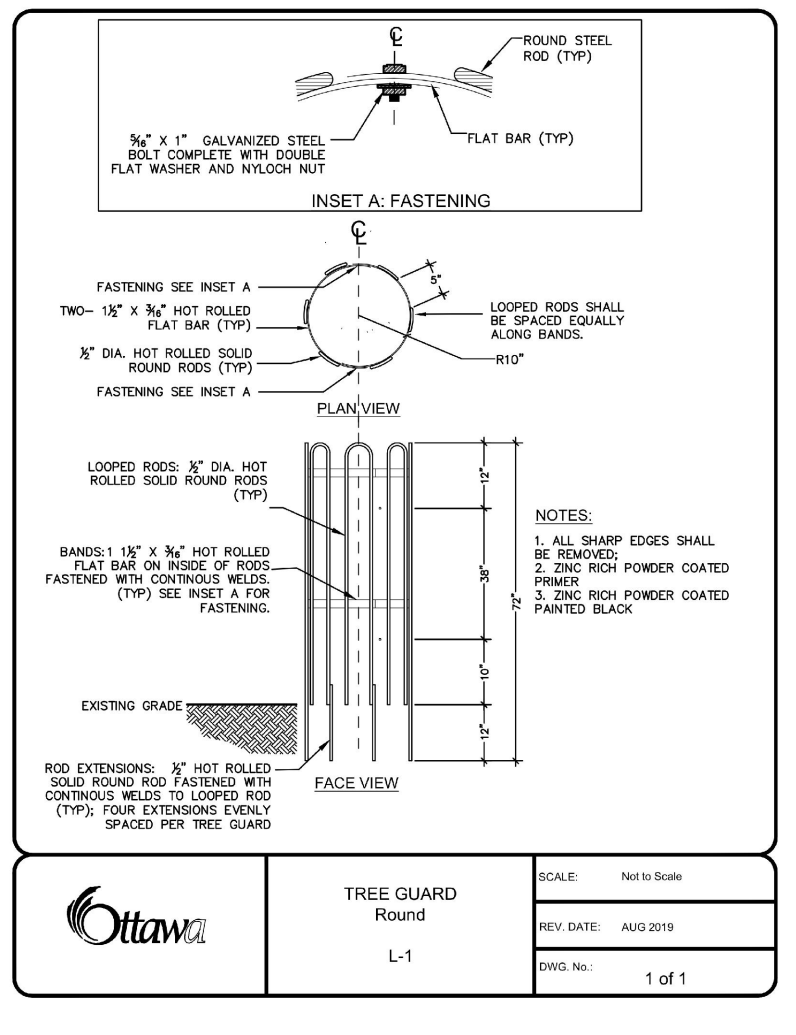
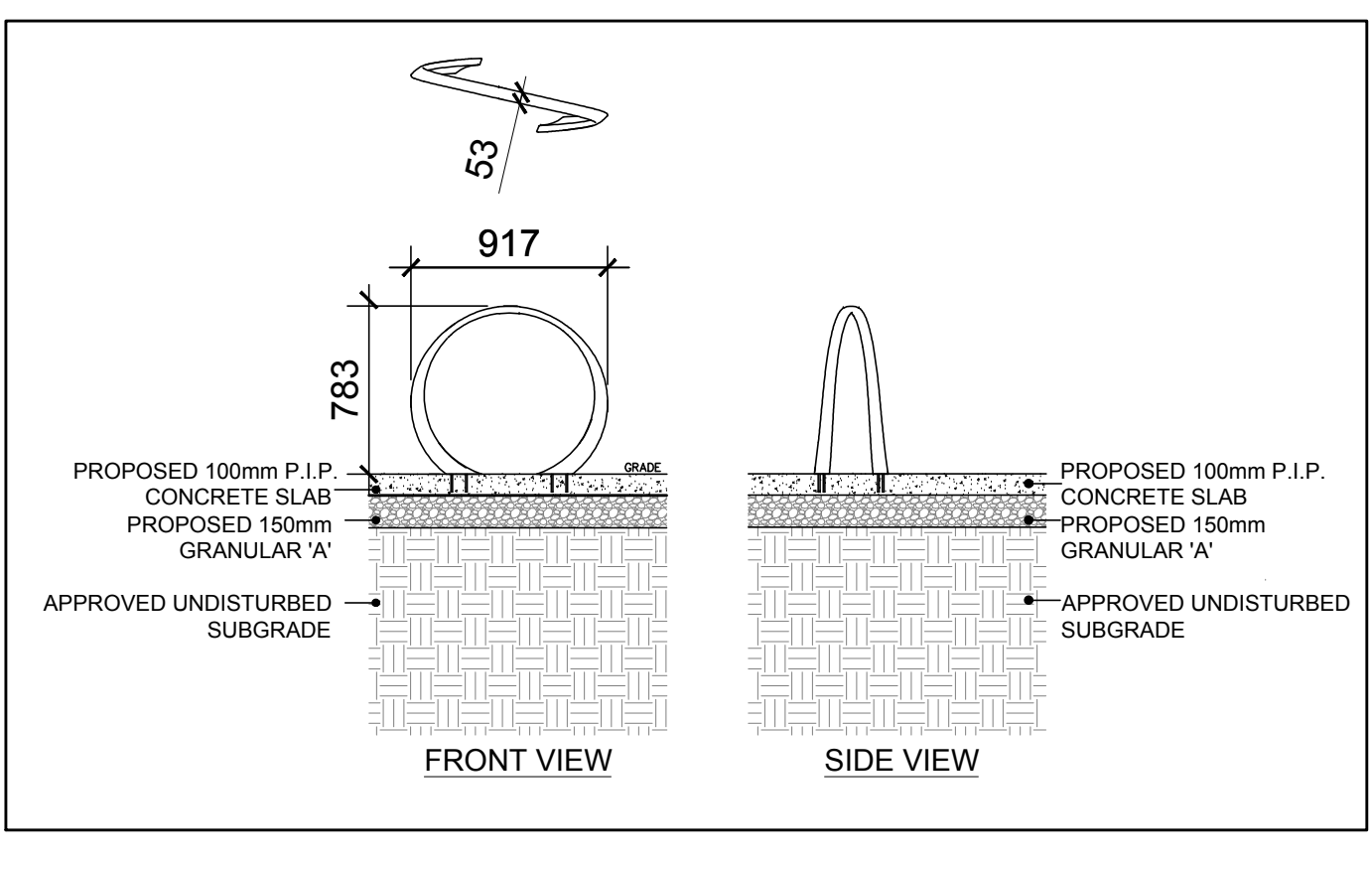
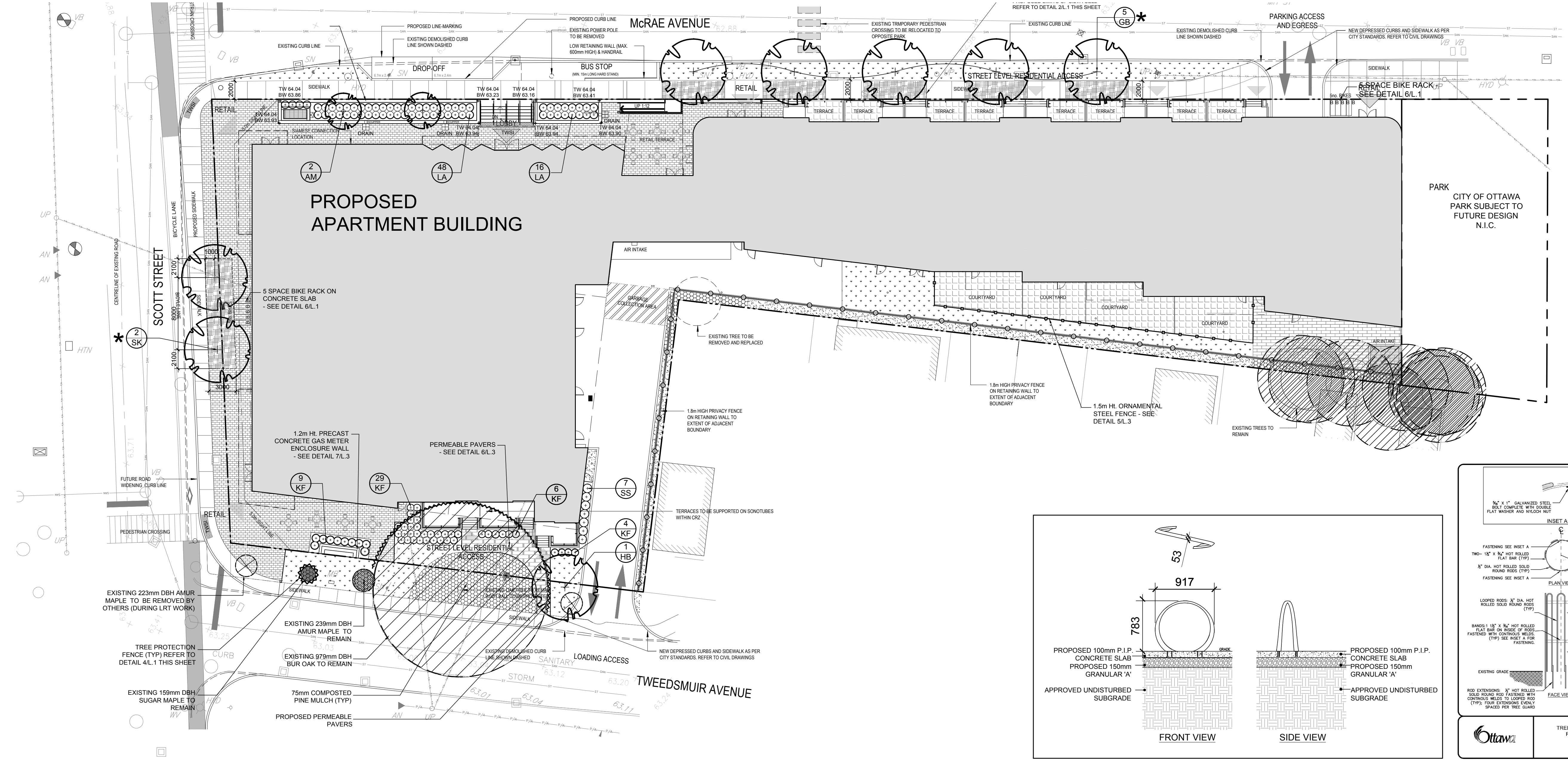
2 DECIDUOUS TREE PLANTING IN SILVA CELL
SCALE: NTS

3 SHRUB / ORNAMENTAL GRASS PLANTING
SCALE: NTS

4 TREE PROTECTION FENCE
SCALE: NTS

PROPOSED PLANT LIST

LEGEND



GWL REALTY ADVISORS

LOCATION PLAN

CONSULTANTS

ARCHITECTS

NEUF ARCHITECTS

630 RENÉ-LÉVESQUE BLVD W SUITE 3200, MONTREAL, QC H8B 1S6
514 847 1117

SURVEYORS

Stantec

1331 CLYDE AVE SUITE 400, OTTAWA, ON K2C 3G4
613.722.4420

- GENERAL NOTES**
- IT IS THE RESPONSIBILITY OF THE APPROPRIATE CONTRACTOR OR OFFICIAL TO REPORT ANY ERRORS, OMISSIONS OR DISCREPANCIES ON THIS PLAN WITH ACTUAL SITE CONDITIONS TO THE LANDSCAPE ARCHITECT BEFORE PROCEEDING WITH CONSTRUCTION.
 - THE CONTRACTOR IS TO NOTIFY ALL UTILITY COMPANIES AND AUTHORITIES PRIOR TO ANY EXCAVATION AND ASCERTAIN LOCATIONS OF UNDERGROUND SERVICES.
 - THE CONTRACTOR IS TO REINSTATE ALL AREAS AND ITEMS DAMAGED AS A RESULT OF CONSTRUCTION ACTIVITY.
 - THE CONTRACTOR IS TO COMPLY WITH ALL PERTINENT CODES AND BY-LAWS.
 - THE CONTRACTOR IS TO MAINTAIN A POSITIVE SURFACE RUN-OFF THROUGHOUT THE ENTIRE CONSTRUCTION PERIOD.
 - THE LANDSCAPE ARCHITECT IS NOT RESPONSIBLE FOR SUBSURFACE CONDITIONS.
 - THE CONTRACTOR IS TO IDENTIFY ALL EXISTING TREES TO REMAIN ON SITE WITH THE LANDSCAPE ARCHITECT PRIOR TO CONSTRUCTION.
 - THE CONTRACTOR IS TO STAKE THE PROPOSED LOCATION OF ALL PLANT MATERIAL IN CONJUNCTION WITH THE LANDSCAPE ARCHITECT PRIOR TO EXCAVATION.
 - MINIMUM DISTANCES FOR SELECTED DECIDUOUS TREES ARE AS FOLLOWS:
 - BUILDING FOUNDATIONS 7.5M
 - SIDEWALKS 1.5M
 - PUBLIC STREETS 2.5M
 - UNDERGROUND INFRASTRUCTURE 2.0M
 - ALL TREES WITHIN 1M OF UNDERGROUND UTILITY TRENCHES ARE TO BE EXCAVATED BY HAND.
 - REMOVE ALL PROTECTIVE WRAPPING FROM TREE TRUNKS AFTER INSTALLATION.
 - STAKING OF TREES SHALL ONLY BE PERFORMED IF NECESSARY.
 - ENSURE THAT MULCH IS PULLED BACK A MIN. DISTANCE OF 75MM FROM BASE OF TREE TRUNK.

No.	Issue	Date	Drawn	Checked
12	REVISED TO SUIT NEW BUS STOP	04/30/2021	WF	JL
11	ISSUED FOR COORDINATION	03/29/2021	WF	JL
10	ISSUED FOR COORDINATION	03/23/2021	WF	JL
9	REVISED FOR SITE PLAN APPROVAL	03/10/2021	WF	JL
8	REVISED PER FORESTRY COMMENTS	02/12/2021	ML	JL
7	2000MM DIMENSIONS ADDED TO MCRAE SIDEWALK	01/13/2021	ML	JL
6	REVISED PER FORESTRY COMMENTS	12/18/2020	ML	JL
5	REVISED PER FORESTRY COMMENTS	12/15/2020	ML	JL
4	REVISED PER CITY COMMENTS	12/08/2020	ML	JL
3	APPLICATION AND PROJECT NUMBERS ADDED	12/07/2020	ML	JL
2	ISSUED FOR COORDINATION AND REVIEW	09/23/2020	ML	JL
1	ISSUED FOR SITE PLAN CONTROL	03/20/2020	ML	JL

JAMES B. LENNOX & ASSOCIATES INC.
LANDSCAPE ARCHITECTS

3332 CARLING AVE. OTTAWA, ONTARIO K2H 5A8
Tel: (613) 723-5168 Fax: (866) 343-3942

PROJECT

MIXED USE APARTMENT BUILDING

320 McRAE AVENUE, OTTAWA, ON

DRAWING

LANDSCAPE PLAN

STAMP

SCALE: AS SHOWN

START DATE: JUNE, 2019

PROJECT NO.: 19MIS1965

PROJECT NORTH

DRAWING NO.

L.1

PILOT SIZE ARCH-D

D07-12-20-0035