

NOTES GÉNÉRALES / General Notes

- Ces documents d'architecture sont la propriété exclusive de NEUF architect(e)s et ne peuvent être utilisés, reproduits ou copiés sans autorisation écrite préalable. / These architectural documents are the exclusive property of NEUF architect(e)s and cannot be used, copied or reproduced without written pre-authorization.
- Les dimensions apparaissant sur ces documents doivent être vérifiées par l'entrepreneur avant le début des travaux. / All dimensions appearing on these documents must be verified by the contractor prior to construction.
- Veuillez aviser l'architecte de toute dimension erronée et/ou divergences entre ces documents et ceux des autres professionnels. / The architect must be notified of all errors, omissions and discrepancies between these documents and those of the other professionals.
- Les dimensions sur ces documents doivent être lues et non mesurées. / The dimensions on these documents must be read and not measured.

STRUCTURE Structural
Adjeleian Allen Rubeli Ltd. (AAR)
 75 Albert Street, Suite 1005
 Ottawa, ON K1P 5E7
 T 613 232 5786

ARCHITECTURE DE PAYSAGE Landscape Architect
James B. Lennox & Associates Inc.
 3332 Carling Ave.
 Ottawa, ON K2H 5A8
 T 613 722 5168

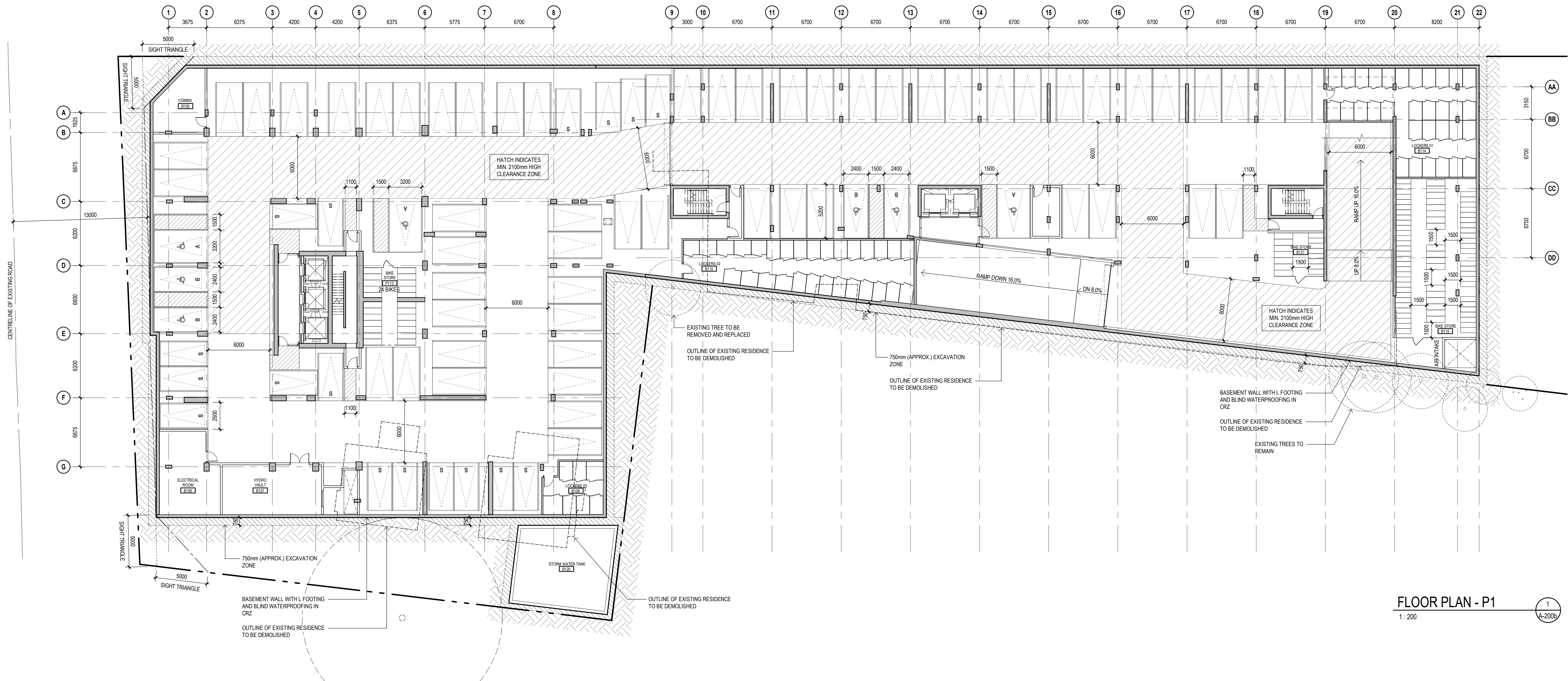
CIVIL Civil
R.V. Anderson Associates Limited
 1750 Courtwood Crescent, Suite 220
 Ottawa, ON K2C 2B5
 T 613 226 1844

HYDRAULIQUE/ÉLECTRIQUE Hydraulic/Electrical
Goodkey, Weedmark & Associates Limited (GWL)
 1688 Woodward Drive
 Ottawa, ON K2C 3R8
 T 613 727 5111

URBANISTE Urban Planner
Fotenn Planning + Design
 396 Cooper Street - Suite 300
 Ottawa, ON K2P 2P7
 T 613 730 5709

ARCHITECTES Architect
NEUF architect(e)s SENCRL
 630, St-Jacques, Montréal, QC H3B 1S6
 T 514 847 1117 NEUFarchitectes.com

SCEAU / Seal



FLOOR PLAN - P1
 1:200

SCHEDULE - STORAGE LOCKER	
TYPE	QUANTITY
BASEMENT 2	
STORAGE LOCKER 1400d x 1675w x 2100h	19
STORAGE LOCKER 1800d x 1300w x 2100h	20
39	
BASEMENT 1	
STORAGE LOCKER 1400d x 1675w x 2100h	9
STORAGE LOCKER 1800d x 1300w x 2100h	59
68	
TOTAL NO. OF STORAGE LOCKERS:	107

SCHEDULE - BICYCLE PARKING	
TYPE	QUANTITY
BASEMENT 2	
HORIZONTAL SPACE 1800Lx600W	21
21	
BASEMENT 1	
HORIZONTAL SPACE 1800Lx600W	49
VERTICAL SPACE 1500Lx500W	62
111	
GROUND LEVEL	
HORIZONTAL SPACE 1800Lx600W	35
VERTICAL SPACE 1500Lx500W	20
55	
TOTAL NO. OF BICYCLE PARKING SPACES:	187

SCHEDULE - PARKING	
TYPE	QUANTITY
BASEMENT 2	
2400mmx4600mm (SMALL)	27
2600mmx5200mm (TYP)	76
103	
BASEMENT 1	
2400mmx4600mm (SMALL)	17
2400mmx5200mm (ACCESSIBLE B)	4
2600mmx5200mm (TYP)	56
3200mmx5200mm (ACCESSIBLE A)	3
80	
TOTAL NO. OF PARKING SPACES:	183

SHEET PRINT DATE: 2020-09-23 4:27:02 PM
 CLIENT: Client

OUVRAGE: Project
320 McRAE AVENUE

EMPLACEMENT Location NO PROJET No.
1976 SCOTT ST & 320 12087
McRAE AVE
OTTAWA, ON

NO	REVISION	DATE
1	SITE PLAN APPROVAL	2020 03 20
1.6	SITE PLAN APPROVAL RESUBMISSION	2020 09 23

Preliminary
 DO NOT USE FOR
 CONSTRUCTION

DESSINÉ PAR Drawn by: DH
 VÉRIFIÉ PAR Checked by: HG
 DATE: 20/03/20
 ÉCHELLE Scale: 1 : 200
 TITRE DU DESSIN Drawing Title:

FLOOR PLAN - PARKING LEVEL 1

REVISION Revision NO. DESSIN Dwg Number
1.6 **A-2006**