



2 WEST ELEVATION (PARKING)
A1 SCALE: 1:100



1 SOUTH ELEVATION
A1 SCALE: 1:100



4 NORTH ELEVATION
A1 SCALE: 1:100



3 EAST ELEVATION (STREET)
A1 SCALE: 1:100

EXTERIOR COLOURS- PALETTE 1

- BRICK:	MERIDIAN- COVENTRY
- STONE:	BRAMTON FINESSE- CANVAS BEIGE, SUAVE
- SIDING:	KAYCAN- VINYL- CATLEMORE
- WINDOWS:	JELDWEN- CHESTNUT BRONZE
- PANELS:	HARDI- TO MATCH COMMERCIAL BROWN
- ALUMINUM SOFFIT/ FASCIA:	KAYCAN- COMMERCIAL BROWN
- ALUMINUM RAILINGS:	COMMERCIAL BROWN
- HARDI BOARD COLUMNS:	TO MATCH COMMERCIAL BROWN
- ASPHALT SHINGLES:	DARK BROWN

APPROVED
By Lily Xu at 3:57 pm, Mar 04, 2021

Lily Xu

LILY XU, MCIP, RPP
MANAGER, DEVELOPMENT REVIEW SOUTH
PLANNING, INFRASTRUCTURE & ECONOMIC
DEVELOPMENT DEPARTMENT, CITY OF OTTAWA

M. David Blakely
Architect Inc.
2330 Prince of Wales Dr., Suite 101 Ottawa, Ontario
Phone (613) 226-8811 Fax (613) 226-7942 K2E 6Z9

GENERAL NOTES:
1. THE CONTRACTOR IS RESPONSIBLE FOR CHECKING AND VERIFYING ALL DIMENSIONS. ANY DISCREPANCY MUST BE REPORTED TO M. DAVID BLAKELY ARCHITECT INC.
2. ALL WORK AND MATERIALS TO BE IN COMPLIANCE WITH ALL CODES, REGULATIONS, & BY-LAWS.
3. ADDITIONAL DRAWINGS MAY BE ISSUED FOR CLARIFICATION TO ASSIST THE PROPER EXECUTION OF WORK. SUCH DRAWINGS WILL HAVE THE SAME MEANING AND INTENT AS IF THEY WERE INCLUDED WITH THE PLANS IN CONTRACT DOCUMENTS.
4. DO NOT SCALE DRAWINGS.
5. THIS DRAWING SHALL NOT BE USED OR COPIED WITHOUT THE AUTHORIZATION OF THE ARCHITECT.
6. THIS DRAWING SHALL NOT BE USED FOR PERMIT OR CONSTRUCTION UNLESS THE DRAWING BEARS THE ARCHITECT'S SEAL AND SIGNATURE.

OWNER: PHOENIX HOMES
18A BENTLEY AVE.
OTTAWA, ON K2E 6T8
(613) 723-9227

ARCHITECT: M. DAVID BLAKELY ARCHITECT INC.
2200 PRINCE OF WALES DR., SUITE 101
OTTAWA, ON K2E 6Z9
(613) 226-8811

CIVIL ENGINEER: IBI GROUP
332 PRESTON STREET #400
OTTAWA, ON K1S 5N4
(613) 225-1311

LANDSCAPE ARCHITECT: JAMES B. LENNOX AND ASSOCIATES INC.
3332 CARLING AVE.
NEPEAN, ON K2H 5A8
(613) 722-5148

SURVEYOR: ANNIS OSULLIVAN VOLLEBECK LTD.
14 CONCOURSE GATE, SUITE 500
NEPEAN, ON K2E 7S6
(613) 727-0850

SEAL

12.									
11.									
10.									
9.									
8.									
7.									
6.									
5.									
4.									
3.									
2.	10/08/20	FOR RESUBMISSION	MB						
1.	11/18/17	FOR SITE PLAN SUBMISSION	MB						
No.	DATE	DESCRIPTION	INT.	No.	DATE	DESCRIPTION	INT.	No.	DATE

24.									
23.									
22.									
21.									
20.									
19.									
18.									
17.									
16.									
15.									
14.									
13.									
No.	DATE	DESCRIPTION	INT.	No.	DATE	DESCRIPTION	INT.	No.	DATE

A - DETAIL NUMBER
B - SHEET NUMBER (DETAIL REQUIRED)
C - SHEET NUMBER (DETAIL LOCATION)

PROJECT: PATHWAYS | BLOCK 232
PLANNED UNIT DEVELOPMENT
1055 CEDAR CREEK DRIVE
OTTAWA, ONTARIO

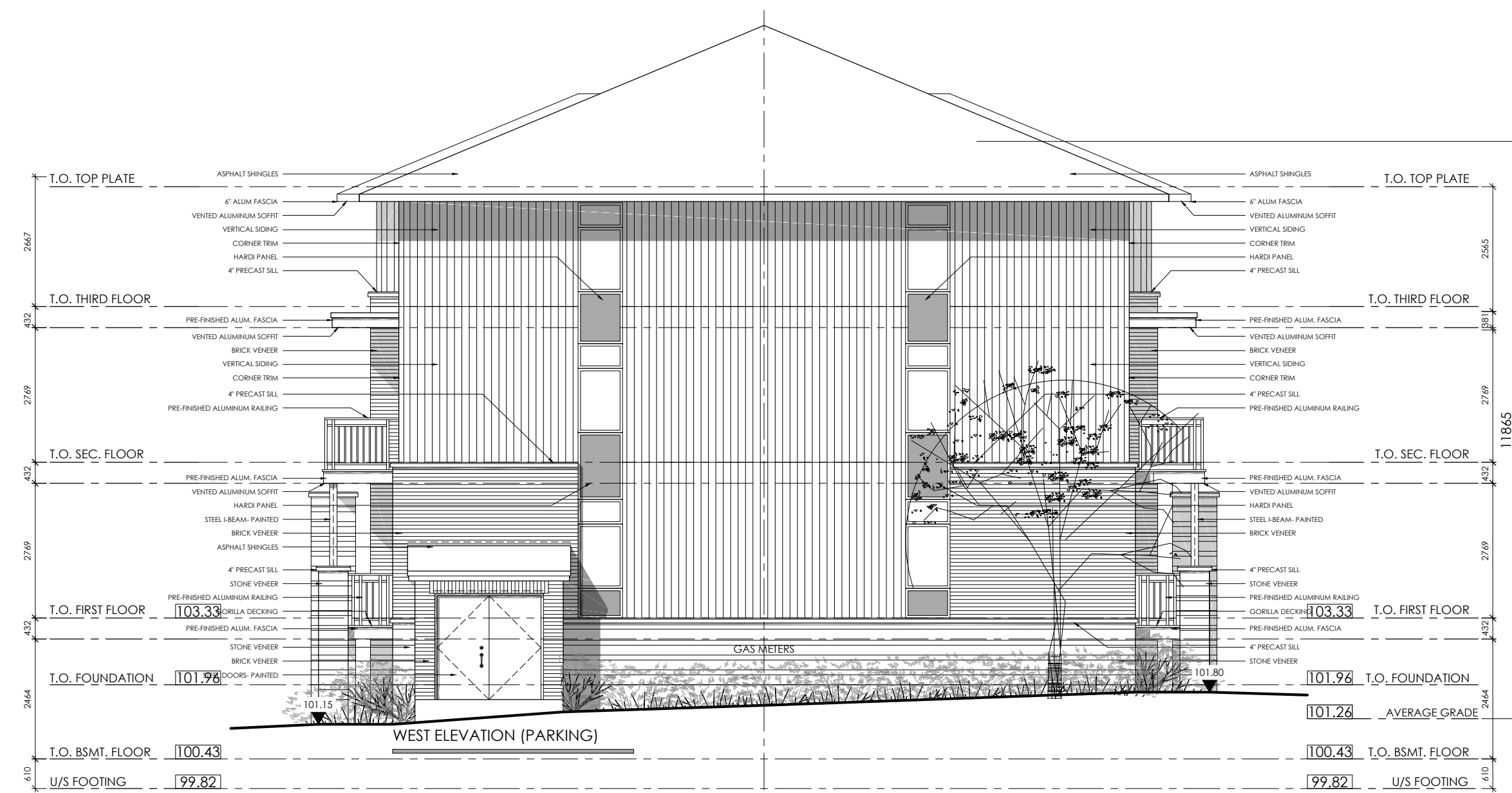
CURT: PHOENIX HOMES
18A Bentley Ave Ottawa, ON K2E 6T8

DRAWING TITLE: BUILDING 1 ELEVATIONS
BACK-TO-BACK STACKED
TERRACE HOMES

DATE: NOV. 2019
SCALE: 1 : 100
SHEET NO. REV. NO.: A1

DRAWN BY: mdb
CHECKED: MDB

D07-12-20-0037



2 WEST ELEVATION (PARKING)
A2 SCALE: 1:100



1 SOUTH ELEVATION (STREET)
A2 SCALE: 1:100



4 NORTH ELEVATION
A2 SCALE: 1:100



3 EAST ELEVATION (STREET)
A2 SCALE: 1:100

EXTERIOR COLOURS- PALETTE 1

- BRICK: MERIDIAN- COVENTRY
- STONE: BRAMTON FINESSE- CANVAS BEIGE, SUAVE
- SIDING: KAYCAN- VINYL- CATLEMORE
- WINDOWS: JELDWEN- CHESTNUT BRONZE
- PANELS: HARDI- TO MATCH COMMERCIAL BROWN
- ALUMINUM SOFFIT/ FASCIA: KAYCAN- COMMERCIAL BROWN
- ALUMINUM RAILINGS: COMMERCIAL BROWN
- HARDI BOARD COLUMNS: TO MATCH COMMERCIAL BROWN
- ASPHALT SHINGLES: DARK BROWN

APPROVED

By Lily Xu at 3:58 pm, Mar 04, 2021

LILY XU, MCIP, RPP
MANAGER, DEVELOPMENT REVIEW SOUTH
PLANNING, INFRASTRUCTURE & ECONOMIC
DEVELOPMENT DEPARTMENT, CITY OF OTTAWA

NO.	DATE	DESCRIPTION	INT.	NO.	DATE	DESCRIPTION	INT.
12.				24.			
11.				23.			
10.				22.			
9.				21.			
8.				20.			
7.				19.			
6.				18.			
5.				17.			
4.				16.			
3.				15.			
2.	10/09/20	FOR RESUBMISSION	MB	14.			
1.	18/11/19	FOR SITE PLAN SUBMISSION	MB	13.			



2 WEST ELEVATION
A3 SCALE: 1:100



1 SOUTH ELEVATION (STREET SIDE)
A3 SCALE: 1:100



4 NORTH ELEVATION (PARKING SIDE)
A3 SCALE: 1:100



3 EAST ELEVATION
A3 SCALE: 1:100

EXTERIOR COLOURS- PALETTE 2

- BRICK:	MERIDIAN- CAVENDISH
- STONE:	BRAMTON FINESSE- MINERAL GREY, SUAVE
- SIDING:	KAYCAN- VINYL- BISQUE
- WINDOWS:	JELDWEN- SABLE
- PANELS:	HARDI- TO MATCH CHARCOAL
- ALUMINUM SOFFIT/ FASCIA:	KAYCAN- CHARCOAL
- ALUMINUM RAILINGS:	CHARCOAL
- HARDI BOARD COLUMNS:	TO MATCH CHARCOAL
- ASPHALT SHINGLES:	DUAL BLACK

APPROVED
By Lily Xu at 3:58 pm, Mar 04, 2021

Lily Xu

LILY XU, MCIP, RPP
MANAGER, DEVELOPMENT REVIEW SOUTH
PLANNING, INFRASTRUCTURE & ECONOMIC
DEVELOPMENT DEPARTMENT, CITY OF OTTAWA

M. David Blakely
Architect Inc.
2330 Prince of Wales Dr., Suite 101 Ottawa, Ontario
Phone (613) 226-8811 Fax (613) 226-7942 K2E 6Z9

GENERAL NOTES:
1. THE CONTRACTOR IS RESPONSIBLE FOR CHECKING AND VERIFYING DIMENSIONS. ANY DISCREPANCY MUST BE REPORTED TO M. DAVID BLAKELY ARCHITECT INC.
2. ALL WORK AND MATERIALS TO BE IN COMPLIANCE WITH ALL CODES, REGULATIONS, & BY-LAWS.
3. ADDITIONAL DRAWINGS MAY BE ISSUED FOR CLARIFICATION TO ASSIST THE PROPER EXECUTION OF WORK. SUCH DRAWINGS WILL HAVE THE SAME MEANING AND INTENT AS IF THEY WERE INCLUDED WITH THIS PLANNING CONTRACT DOCUMENTS.
4. DO NOT SCALE DRAWINGS.
5. THIS DRAWING SHALL NOT BE USED OR COPIED WITHOUT THE AUTHORIZATION OF THE ARCHITECT.
6. THIS DRAWING SHALL NOT BE USED FOR PERMIT OR CONSTRUCTION UNLESS THE DRAWING BEARS THE ARCHITECT'S SEAL AND SIGNATURE.

OWNER: PHOENIX HOMES
18A BENTLEY AVE.
OTTAWA, ON K2E 6T8
(613) 722-9222

ARCHITECT: M. DAVID BLAKELY ARCHITECT INC.
2200 PRINCE OF WALES DR., SUITE 101
OTTAWA, ON K2E 6Z9
(613) 226-8811

CIVIL ENGINEER: IBI GROUP
332 PRESTON STREET #400
OTTAWA, ON K1S 5N4
(613) 225-1311

LANDSCAPE ARCHITECT: JAMES B. LENNOX AND ASSOCIATES INC.
3332 CARLING AVE.
NEPEAN, ON K2H 5A8
(613) 722-5148

SURVEYOR: ANNIS OSULLIVAN VOLLEBECK LTD.
14 CONCOURSE GATE, SUITE 500
NEPEAN, ON K2E 7S6
(613) 727-0850

SEAL

12.			
11.			
10.			
9.			
8.			
7.			
6.			
5.			
4.			
3.			
2.	10/08/20	FOR RESUBMISSION	MB
1.	11/17/19	FOR SITE PLAN SUBMISSION	MB
No.	DATE	DESCRIPTION	INT.

REVISIONS

24.			
23.			
22.			
21.			
20.			
19.			
18.			
17.			
16.			
15.			
14.			
13.			
No.	DATE	DESCRIPTION	INT.

A B C

A - DETAIL NUMBER
B - SHEET NUMBER (DETAIL REQUIRED)
C - SHEET NUMBER (DETAIL LOCATION)

PROJECT: PATHWAYS | BLOCK 232
PLANNED UNIT DEVELOPMENT
1055 CEDAR CREEK DRIVE
OTTAWA, ONTARIO

CURT: PHOENIX HOMES
18A Bentley Ave Ottawa, ON K2E 6T8

DRAWING TITLE: BUILDING 3 ELEVATIONS
18 UNIT APARTMENT

DATE: NOV. 2019

SCALE: 1 : 100

SHEET NO. REV. NO.: A3

DRAWN BY: mdb

CHECKED: MDB

D07-12-20-0037



2 WEST ELEVATION
A4 SCALE: 1:100



1 SOUTH ELEVATION (STREET SIDE)
A4 SCALE: 1:100



4 NORTH ELEVATION (PARKING SIDE)
A4 SCALE: 1:100



3 EAST ELEVATION
A4 SCALE: 1:100

EXTERIOR COLOURS- PALETTE 2

- BRICK:	MERIDIAN- CAVENDISH
- STONE:	BRAMTON FINESSE- MINERAL GREY, SUAVE
- SIDING:	KAYCAN- VINYL- BISQUE
- WINDOWS:	JELDOWEN- SABLE
- PANELS:	HARDI- TO MATCH CHARCOAL
- ALUMINUM SOFFIT/ FASCIA:	KAYCAN- CHARCOAL
- ALUMINUM RAILINGS:	CHARCOAL
- HARDI BOARD COLUMNS:	TO MATCH CHARCOAL
- ASPHALT SHINGLES:	DUAL BLACK

APPROVED
By Lily Xu at 4:05 pm, Mar 04, 2021

Lily Xu
LILY XU, MCIP, RPP
MANAGER, DEVELOPMENT REVIEW SOUTH
PLANNING, INFRASTRUCTURE & ECONOMIC
DEVELOPMENT DEPARTMENT, CITY OF OTTAWA

M. David Blakely
Architect Inc.
2330 Prince of Wales Dr., Suite 101, Ottawa, Ontario
Phone (613) 226-8811 Fax (613) 226-7942 K2E 6Z9

GENERAL NOTES:
1. THE CONTRACTOR IS RESPONSIBLE FOR CHECKING AND VERIFYING ALL DIMENSIONS. ANY DISCREPANCY MUST BE REPORTED TO MR. DAVID BLAKELY ARCHITECT INC.
2. ALL WORK AND MATERIALS TO BE IN COMPLIANCE WITH ALL CODES, REGULATIONS, & BY-LAWS WITHOUT THE AUTHORIZATION OF THE ARCHITECT.
3. ADDITIONAL DRAWINGS MAY BE ISSUED FOR CLARIFICATION TO ASSIST THE PROPER EXECUTION OF WORK. SUCH DRAWINGS WILL HAVE THE SAME MEANING AND INTENT AS IF THEY WERE INCLUDED WITH THE PLANS IN CONTRACT DOCUMENTS.
4. DO NOT SCALE DRAWINGS.
5. THIS DRAWING SHALL NOT BE USED OR COPIED WITHOUT THE AUTHORIZATION OF THE ARCHITECT.
6. THIS DRAWING SHALL NOT BE USED FOR PERMIT OR CONSTRUCTION UNLESS THE DRAWING BEARS THE ARCHITECT'S SEAL AND SIGNATURE.

OWNER: PHOENIX HOMES
18A BENTLEY AVE.
OTTAWA, ON K2E 6T8
(613) 723-9227

ARCHITECT: M. DAVID BLAKELY ARCHITECT INC.
2200 PRINCE OF WALES DR., SUITE 101
OTTAWA, ON K2E 6Z9
(613) 226-8811

CIVIL ENGINEER: IBI GROUP
332 PRESTON STREET #400
OTTAWA, ON K1S 5N4
(613) 225-1311

LANDSCAPE ARCHITECT: JAMES B. LENNOX AND ASSOCIATES INC.
3332 CARLING AVE.
NEPEAN, ON K2H 5A8
(613) 722-5148

SURVEYOR: ANNIS OSULLIVAN VOLLEBEK LTD.
14 CONCOURSE GATE, SUITE 500
NEPEAN, ON K2E 7S4
(613) 727-0850

SEAL

12.		24.	
11.		23.	
10.		22.	
9.		21.	
8.		20.	
7.		19.	
6.		18.	
5.		17.	
4.		16.	
3.		15.	

No.	DATE	DESCRIPTION	INT.	No.	DATE	DESCRIPTION	INT.
2.	10/08/20	FOR RESUBMISSION	MB	14.			
1.	11/11/19	FOR SITE PLAN SUBMISSION	MB	13.			

A - DETAIL NUMBER
B - SHEET NUMBER (DETAIL REQUIRED)
C - SHEET NUMBER (DETAIL LOCATION)

PROJECT: PATHWAYS | BLOCK 232
PLANNED UNIT DEVELOPMENT
1055 CEDAR CREEK DRIVE
OTTAWA, ONTARIO

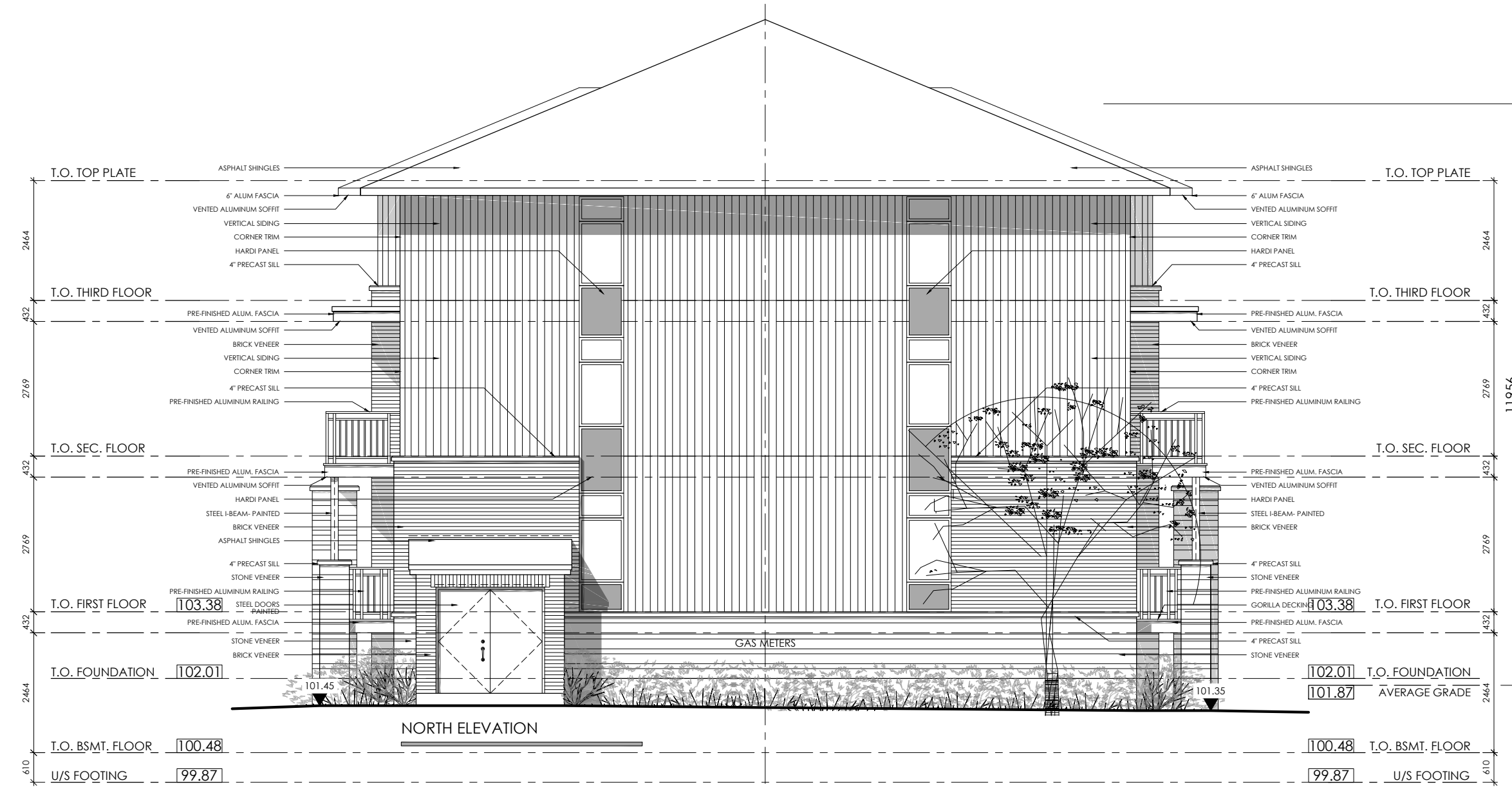
CURT: PHOENIX HOMES
18A Bentley Ave Ottawa, ON K2E 6T8

DRAWING TITLE: BUILDING 4 ELEVATIONS
18 UNIT APARTMENT

DATE: NOV. 2019
SCALE: 1 : 100
SHEET NO. REV. NO.: A4

DRAWN BY: mdb
CHECKED: MDB

D07-12-20-0037



2 NORTH ELEVATION
A5 SCALE: 1:100



1 WEST ELEVATION
A5 SCALE: 1:100



4 EAST ELEVATION
A5 SCALE: 1:100



3 SOUTH ELEVATION (STREET)
A5 SCALE: 1:100

EXTERIOR COLOURS- PALETTE 1

- BRICK: MERIDIAN- COVENTRY
- STONE: BRAMTON FINESSE- CANVAS BEIGE, SUAVE
- SIDING: KAYCAN- VINYL- CATLEMORE
- WINDOWS: JELDWEN- CHESTNUT BRONZE
- PANELS: HARDI- TO MATCH COMMERCIAL BROWN
- ALUMINUM SOFFIT/ FASCIA: KAYCAN- COMMERCIAL BROWN
- ALUMINUM RAILINGS: COMMERCIAL BROWN
- HARDI BOARD COLUMNS: TO MATCH COMMERCIAL BROWN
- ASPHALT SHINGLES: DARK BROWN

APPROVED
By Lily Xu at 4:05 pm, Mar 04, 2021

Lily Xu

LILY XU, MCIP, RPP
MANAGER, DEVELOPMENT REVIEW SOUTH
PLANNING, INFRASTRUCTURE & ECONOMIC
DEVELOPMENT DEPARTMENT, CITY OF OTTAWA

M. David Blakely
Architect Inc.
2200 Prince of Wales Dr., Suite 101 Ottawa, Ontario
Phone (613) 226-8811 Fax (613) 226-7942 K2E 6Z9

GENERAL NOTES:
1. THE CONTRACTOR IS RESPONSIBLE FOR CHECKING AND VERIFYING ALL DIMENSIONS. ANY DISCREPANCY MUST BE REPORTED TO M. DAVID BLAKELY ARCHITECT INC.
2. ALL WORK AND MATERIALS TO BE IN COMPLIANCE WITH ALL CODES, REGULATIONS, & BY-LAWS
3. ADDITIONAL DRAWINGS MAY BE ISSUED FOR CLARIFICATION TO ASSIST THE PROPER EXECUTION OF WORK. SUCH DRAWINGS WILL HAVE THE SAME MEANING AND INTENT AS IF THEY WERE INCLUDED WITH THE PLANS IN CONTRACT DOCUMENTS
4. DO NOT SCALE DRAWINGS.
5. THIS DRAWING SHALL NOT BE USED OR COPIED WITHOUT THE AUTHORIZATION OF THE ARCHITECT
6. THIS DRAWING SHALL NOT BE USED FOR PERMIT OR CONSTRUCTION UNLESS THE DRAWING BEARS THE ARCHITECT'S SEAL AND SIGNATURE

OWNER: PHOENIX HOMES
18A BENTLEY AVE.
OTTAWA, ON K2E 6T8
(613) 723-9227

ARCHITECT: M. DAVID BLAKELY ARCHITECT INC.
2200 PRINCE OF WALES DR., SUITE 101
OTTAWA, ON K2E 6Z9
(613) 226-8811

CIVIL ENGINEER: IBI GROUP
333 PRESTON STREET #400
OTTAWA, ON K1S 5N4
(613) 225-1311

LANDSCAPE ARCHITECT: JAMES B. LENNOX AND ASSOCIATES INC.
3332 CARLING AVE.
NEPEAN, ON K2H 5A8
(613) 722-5168

SURVEYOR: ANNIS O'SULLIVAN VOLLEBECK LTD.
14 CONCOURSE GATE, SUITE 500
NEPEAN, ON K2E 756
(613) 727-0850

SEAL

No.	DATE	DESCRIPTION	INT.
12.			
11.			
10.			
9.			
8.			
7.			
6.			
5.			
4.			
3.			
2.	10/08/20	FOR RESUBMISSION	MB
1.	11/18/17	FOR SITE PLAN SUBMISSION	MB

No.	DATE	DESCRIPTION	INT.
24.			
23.			
22.			
21.			
20.			
19.			
18.			
17.			
16.			
15.			
14.			
13.			

A - DETAIL NUMBER
B - SHEET NUMBER (DETAIL REQUIRED)
C - SHEET NUMBER (DETAIL LOCATION)

PROJECT: PATHWAYS | BLOCK 232
PLANNED UNIT DEVELOPMENT
1055 CEDAR CREEK DRIVE
OTTAWA, ONTARIO

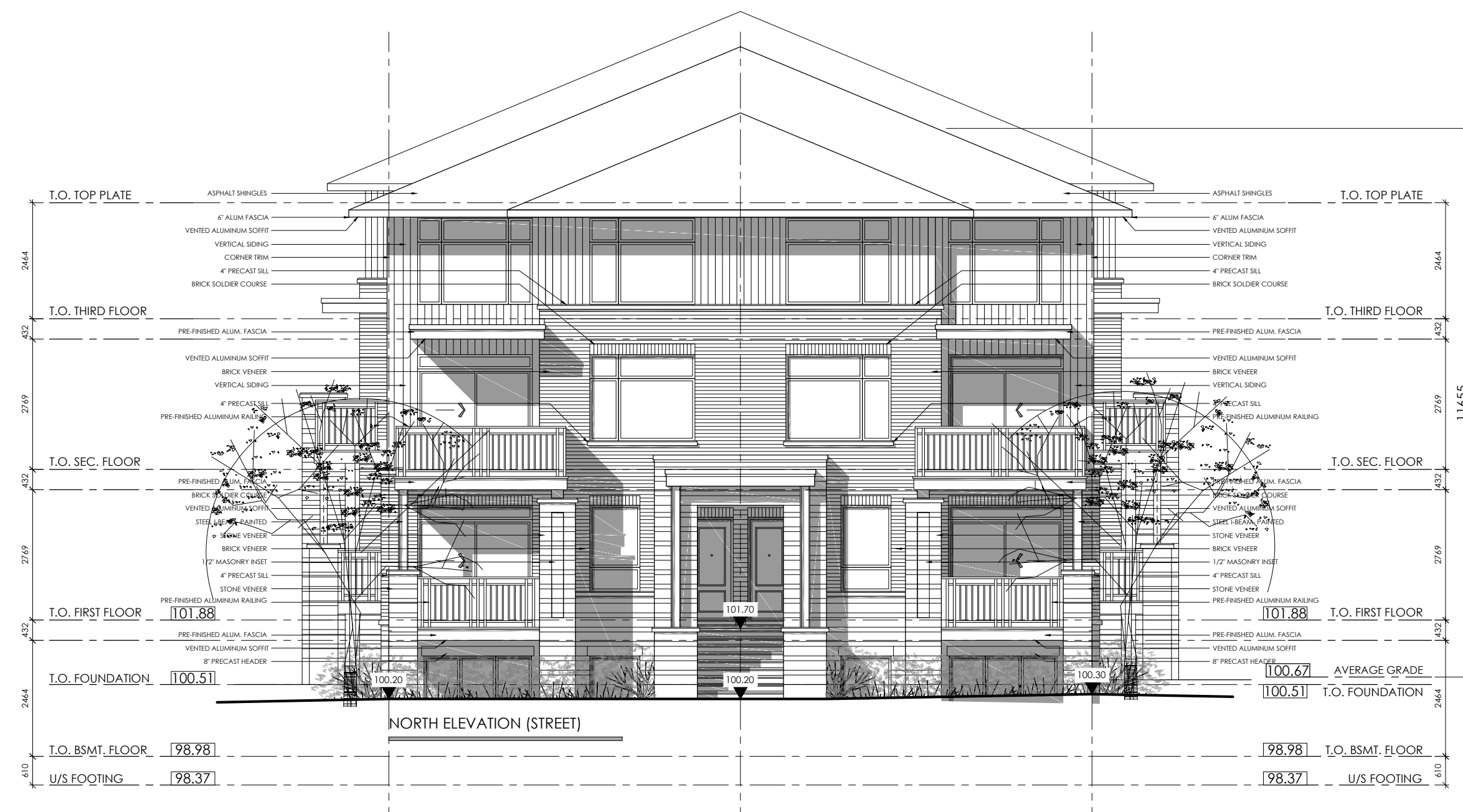
CURT: PHOENIX HOMES
18A Bentley Ave Ottawa, ON K2E 6T8

DRAWING TITLE: BUILDING 5 ELEVATIONS
BACK-TO-BACK STACKED
TERRACE HOMES

DATE: NOV. 2019
SCALE: 1 : 100
SHEET NO. REV. NO.: A5

DRAWN BY: mdb
CHECKED: MDB

D07-12-20-0037



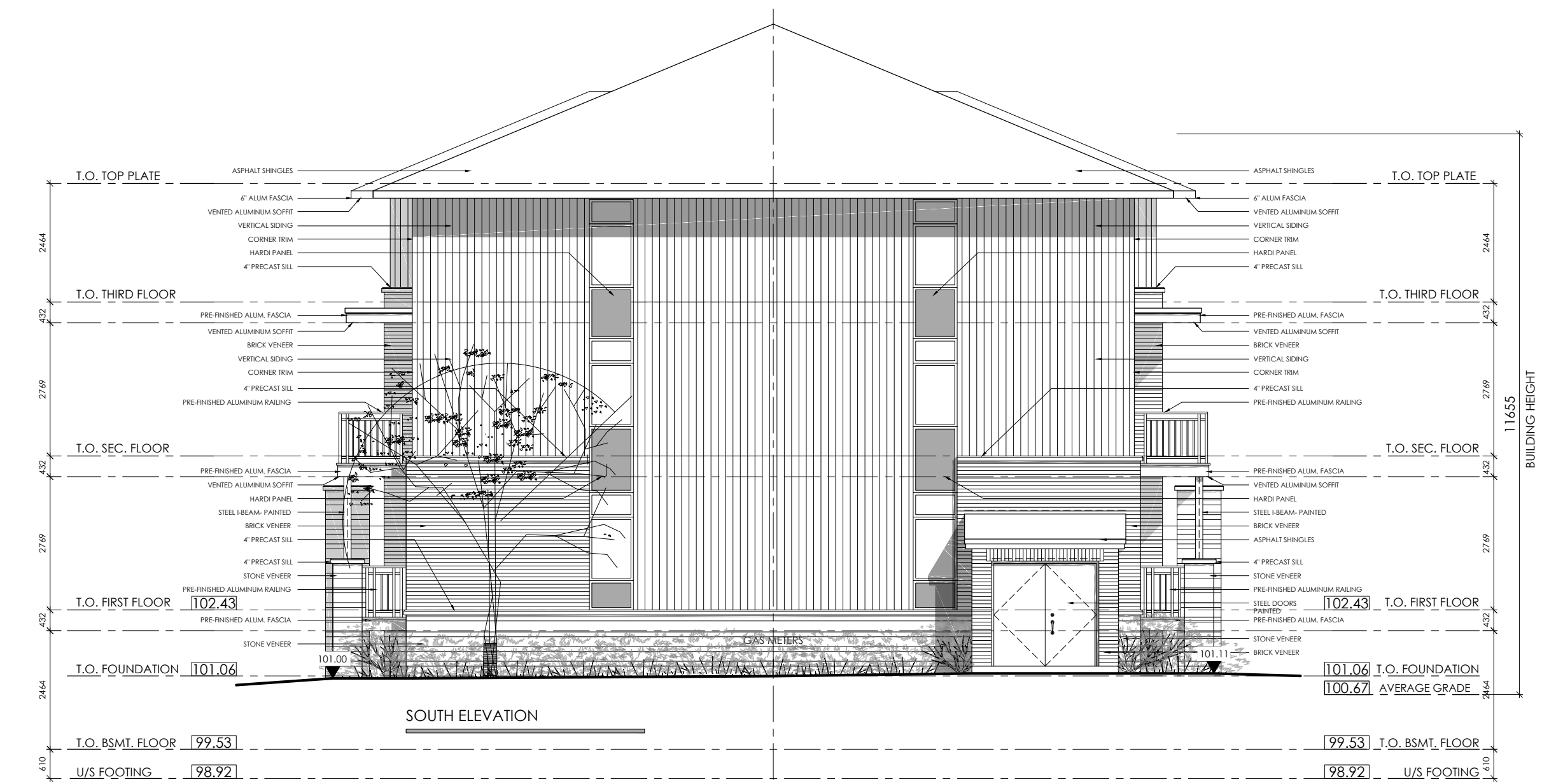
2 NORTH ELEVATION (STREET)
A6 SCALE: 1:100



1 WEST ELEVATION
A6 SCALE: 1:100



4 EAST ELEVATION
A6 SCALE: 1:100



3 SOUTH ELEVATION
A6 SCALE: 1:100

EXTERIOR COLOURS- PALETTE 1

- BRICK: MERIDIAN- COVENTRY
- STONE: BRAMTON FINESSE- CANVAS BEIGE, SUAVE
- SIDING: KAYCAN- VINYL- CATLEMORE
- WINDOWS: JELDWEN- CHESTNUT BRONZE
- PANELS: HARDI- TO MATCH COMMERCIAL BROWN
- ALUMINUM SOFFIT/ FASCIA: KAYCAN- COMMERCIAL BROWN
- ALUMINUM RAILINGS: COMMERCIAL BROWN
- HARDI BOARD COLUMNS: TO MATCH COMMERCIAL BROWN
- ASPHALT SHINGLES: DARK BROWN

APPROVED
By Lily Xu at 4:06 pm, Mar 04, 2021

Lily Xu

LILY XU, MCIP, RPP
MANAGER, DEVELOPMENT REVIEW SOUTH
PLANNING, INFRASTRUCTURE & ECONOMIC
DEVELOPMENT DEPARTMENT, CITY OF OTTAWA

M. David Blakely Architect Inc.
2330 Prince of Wales Dr., Suite 101 Ottawa, Ontario
Phone (613) 226-8811 Fax (613) 226-7942 K2E 6Z9

GENERAL NOTES:
1. THE CONTRACTOR IS RESPONSIBLE FOR CHECKING AND VERIFYING ALL DIMENSIONS. ANY DISCREPANCY MUST BE REPORTED TO M. DAVID BLAKELY ARCHITECT INC.
2. ALL WORK AND MATERIALS TO BE IN COMPLIANCE WITH ALL CODES, REGULATIONS, & BY-LAWS.
3. ADDITIONAL DRAWINGS MAY BE ISSUED FOR CLARIFICATION TO ASSIST THE PROPER EXECUTION OF WORK. SUCH DRAWINGS WILL HAVE THE SAME MEANING AND INTENT AS IF THEY WERE INCLUDED WITH THE PLANS IN CONTRACT DOCUMENTS.
4. DO NOT SCALE DRAWINGS.
5. THIS DRAWING SHALL NOT BE USED OR COPIED WITHOUT THE AUTHORIZATION OF THE ARCHITECT.
6. THIS DRAWING SHALL NOT BE USED FOR PERMIT OR CONSTRUCTION UNLESS THE DRAWING BEARS THE ARCHITECT'S SEAL AND SIGNATURE.

OWNER: PHOENIX HOMES
18A BENTLEY AVE.
OTTAWA, ON K2E 6T8
(613) 723-9227

ARCHITECT: M. DAVID BLAKELY ARCHITECT INC.
2200 PRINCE OF WALES DR., SUITE 101
OTTAWA, ON K2E 6Z9
(613) 226-8811

CIVIL ENGINEER: BBI GROUP
332 PRESTON STREET #400
OTTAWA, ON K1S 5N4
(613) 225-1311

LANDSCAPE ARCHITECT: JAMES B. LENNOX AND ASSOCIATES INC.
3332 CARLING AVE.
NEPEAN, ON K2H 5A8
(613) 722-5168

SURVEYOR: ANNIS OSULLIVAN VOLLEBEKK LTD.
14 CONCOURSE GATE, SUITE 500
NEPEAN, ON K2E 7S6
(613) 727-0850

SEAL

No.	DATE	DESCRIPTION	INT.	No.	DATE	DESCRIPTION	INT.
12.				24.			
11.				23.			
10.				22.			
9.				21.			
8.				20.			
7.				19.			
6.				18.			
5.				17.			
4.				16.			
3.				15.			
2.	10/08/20	FOR RESUBMISSION	MB	14.			
1.	11/18/17	FOR SITE PLAN SUBMISSION	MB	13.			

A
B
C

A - DETAIL NUMBER
B - SHEET NUMBER (DETAIL REQUIRED)
C - SHEET NUMBER (DETAIL LOCATION)

PROJECT: PATHWAYS | BLOCK 232
PLANNED UNIT DEVELOPMENT
1055 CEDAR CREEK DRIVE
OTTAWA, ONTARIO

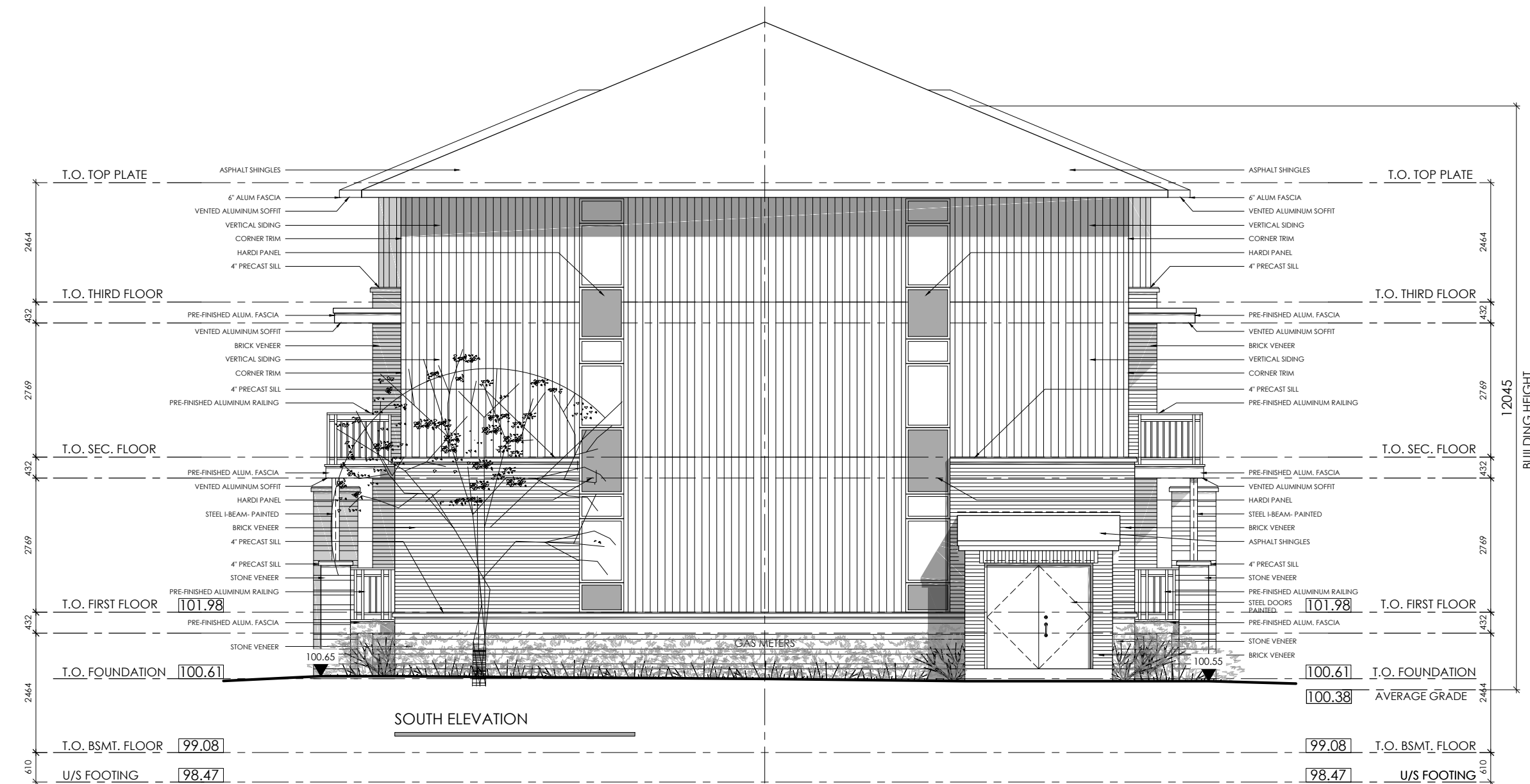
CURT: PHOENIX HOMES
18A Bentley Ave Ottawa, ON K2E 6T8

DRAWING TITLE: BUILDING 6 ELEVATIONS
BACK-TO-BACK STACKED
TERRACE HOMES

DATE: NOV. 2019
SCALE: 1 : 100
SHEET NO. REV. NO.: A6

DRAWN BY: mdb
CHECKED: MDB

D07-12-20-0037



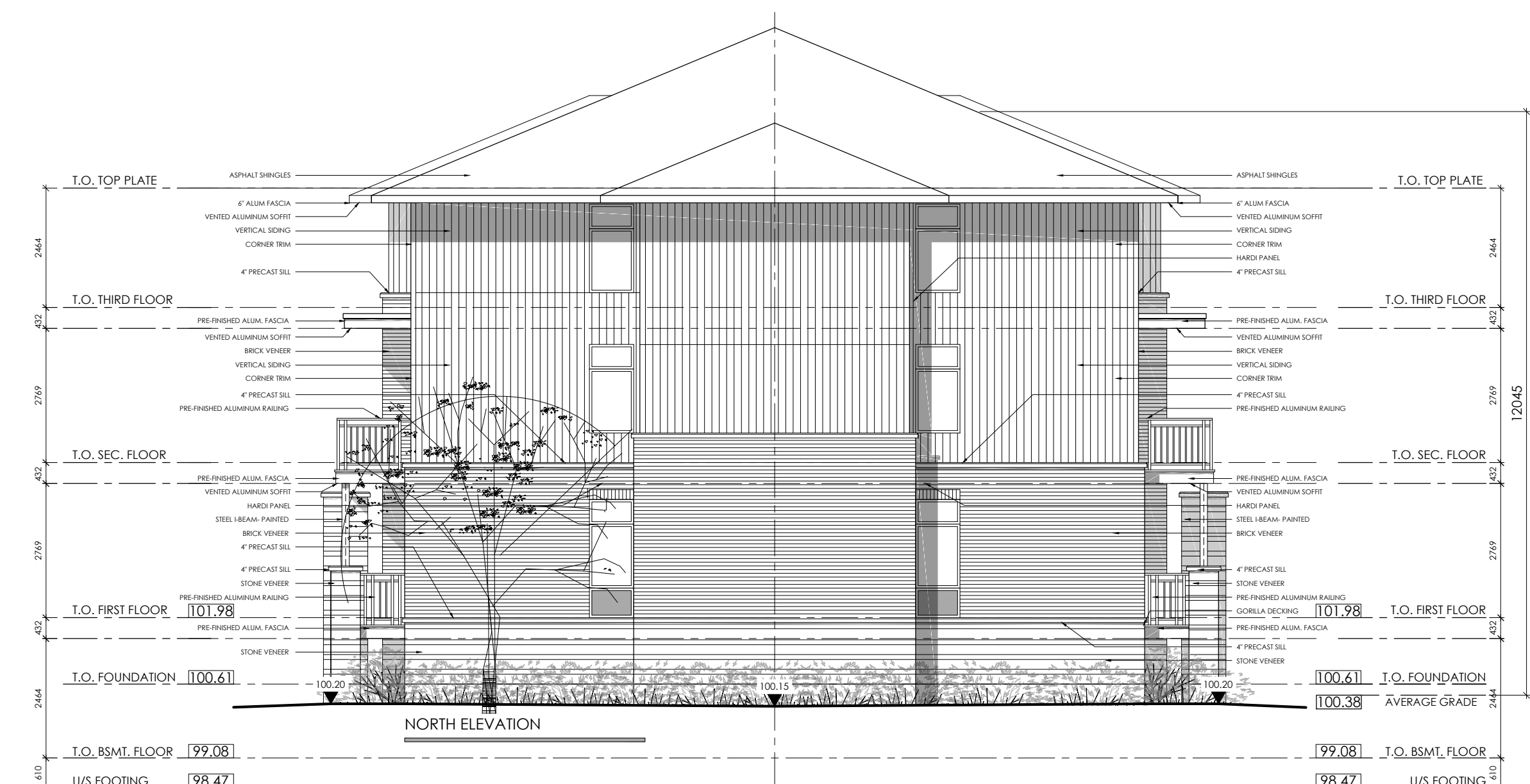
2 SOUTH ELEVATION
A7 SCALE: 1:100



1 WEST ELEVATION
A7 SCALE: 1:100



4 EAST ELEVATION
A7 SCALE: 1:100



3 NORTH ELEVATION (STREET)
A7 SCALE: 1:100

EXTERIOR COLOURS- PALETTE 1

- BRICK:	MERIDIAN- COVENTRY
- STONE:	BRAMTON FINESSE- CANVAS BEIGE, SUAVE
- SIDING:	KAYCAN- VINYL- CATLEMORE
- WINDOWS:	JELDWEN- CHESTNUT BRONZE
- PANELS:	HARDI- TO MATCH COMMERCIAL BROWN
- ALUMINUM SOFFIT/ FASCIA:	KAYCAN- COMMERCIAL BROWN
- ALUMINUM RAILINGS:	COMMERCIAL BROWN
- HARDI BOARD COLUMNS:	TO MATCH COMMERCIAL BROWN
- ASPHALT SHINGLES:	DARK BROWN

APPROVED
By Lily Xu at 4:06 pm, Mar 04, 2021



LILY XU, MCIP, RPP
MANAGER, DEVELOPMENT REVIEW SOUTH
PLANNING, INFRASTRUCTURE & ECONOMIC
DEVELOPMENT DEPARTMENT, CITY OF OTTAWA

M. David Blakely
Architect Inc.
2200 Prince of Wales Dr., Suite 101 Ottawa, Ontario
Phone (613) 226-8811 Fax (613) 226-7942 K2E 6Z9

GENERAL NOTES:
1. THE CONTRACTOR IS RESPONSIBLE FOR CHECKING AND VERIFYING ALL DIMENSIONS. ANY DISCREPANCY MUST BE REPORTED TO M. DAVID BLAKELY ARCHITECT INC.
2. ALL WORK AND MATERIALS TO BE IN COMPLIANCE WITH ALL CODES, REGULATIONS, & BY-LAWS.
3. ADDITIONAL DRAWINGS MAY BE ISSUED FOR CLARIFICATION TO ASSIST THE PROPER EXECUTION OF WORK. SUCH DRAWINGS WILL HAVE THE SAME MEANING AND INTENT AS IF THEY WERE INCLUDED WITH THE PLANS IN CONTRACT DOCUMENTS.
4. DO NOT SCALE DRAWINGS.
5. THIS DRAWING SHALL NOT BE USED OR COPIED WITHOUT THE AUTHORIZATION OF THE ARCHITECT.
6. THIS DRAWING SHALL NOT BE USED FOR PERMIT OR CONSTRUCTION UNLESS THE DRAWING BEARS THE ARCHITECT'S SEAL AND SIGNATURE.

OWNER: PHOENIX HOMES
18A BENTLEY AVE.
OTTAWA, ON K2E 6T8
(613) 723-9227

ARCHITECT: M. DAVID BLAKELY ARCHITECT INC.
2200 PRINCE OF WALES DR., SUITE 101
OTTAWA, ON K2E 6Z9
(613) 226-8811

CIVIL ENGINEER: IBI GROUP
332 PRESTON STREET #400
OTTAWA, ON K1S 5N4
(613) 225-1311

LANDSCAPE ARCHITECT: JAMES B. LENOX AND ASSOCIATES INC.
3332 CARLING AVE.
NEPEAN, ON K2H 5A8
(613) 722-5148

SURVEYOR: ANNIS O'SULLIVAN VOLLEBEK LTD.
14 CONCOURSE GATE, SUITE 500
NEPEAN, ON K2E 7S4
(613) 727-0850

SEAL

12.					
11.					
10.					
9.					
8.					
7.					
6.					
5.					
4.					
3.					

24.					
23.					
22.					
21.					
20.					
19.					
18.					
17.					
16.					
15.					
14.					
13.					

No.	DATE	DESCRIPTION	INT.
2.	10/08/20	FOR RESUBMISSION	MB
1.	11/17/19	FOR SITE PLAN SUBMISSION	MB

A - DETAIL NUMBER
B - SHEET NUMBER (DETAIL REQUIRED)
C - SHEET NUMBER (DETAIL LOCATION)

PROJECT: PATHWAYS | BLOCK 232
PLANNED UNIT DEVELOPMENT
1055 CEDAR CREEK DRIVE
OTTAWA, ONTARIO

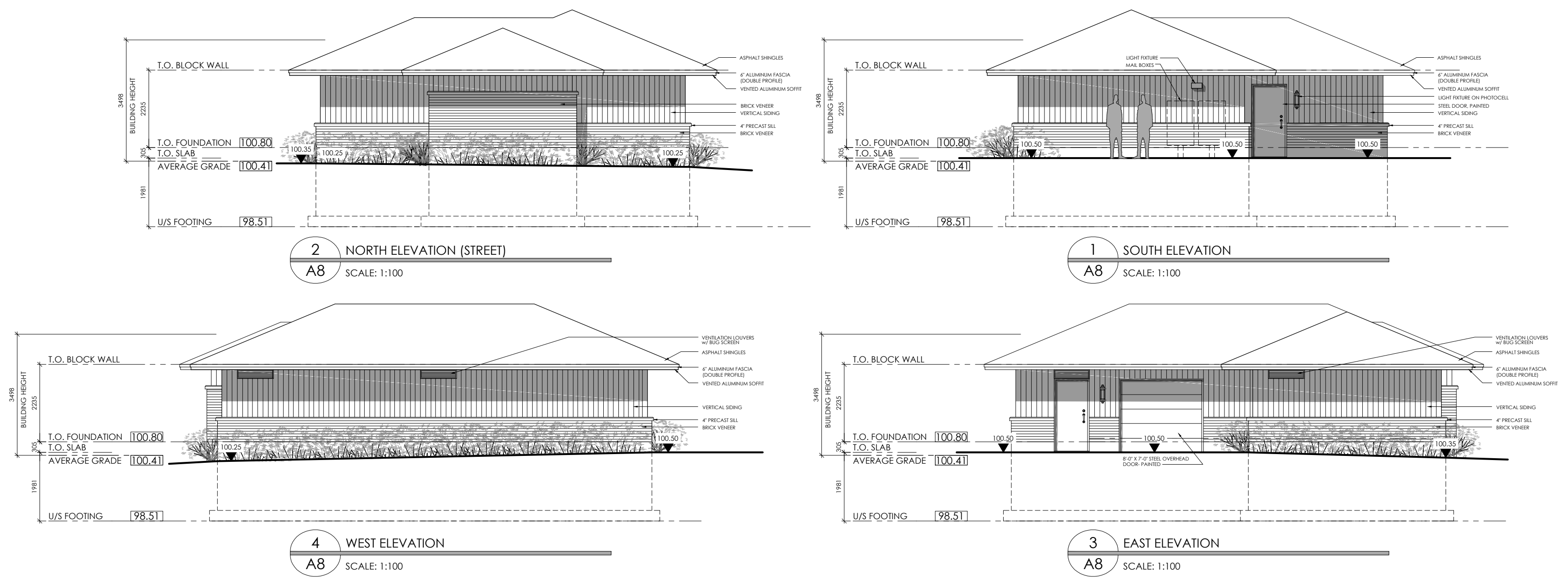
CURT: PHOENIX HOMES
18A Bentley Ave Ottawa, ON K2E 6T8

DRAWING TITLE: BUILDING 7 ELEVATIONS
BACK-TO-BACK STACKED
TERRACE HOMES

DATE: NOV. 2019
SCALE: 1 : 100
SHEET NO. REV. NO.: A7

DRAWN BY: mdb
CHECKED: MDB

D07-12-20-0037



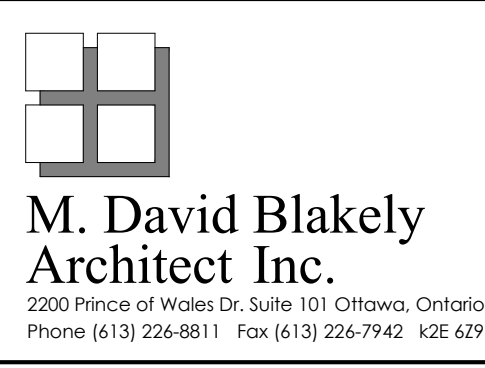
EXTERIOR COLOURS- PALETTE 2

- BRICK:	MERIDIAN- CAVENDISH
- STONE:	BRAMTON FINESSE- MINERAL GREY, SUAVE
- SIDING:	KAYCAN- VINYL- BISQUE
- WINDOWS:	JELDWEN- SABLE
- PANELS:	HARDI- TO MATCH CHARCOAL
- ALUMINUM SOFFIT/ FASCIA:	KAYCAN- CHARCOAL
- ALUMINUM RAILINGS:	CHARCOAL
- HARDI BOARD COLUMNS:	TO MATCH CHARCOAL
- ASPHALT SHINGLES:	DUAL BLACK

APPROVED
 By Lily Xu at 4:06 pm, Mar 04, 2021



LILY XU, MCIP, RPP
 MANAGER, DEVELOPMENT REVIEW SOUTH
 PLANNING, INFRASTRUCTURE & ECONOMIC
 DEVELOPMENT DEPARTMENT, CITY OF OTTAWA



GENERAL NOTES:
 1. THE CONTRACTOR IS RESPONSIBLE FOR CHECKING AND VERIFYING ALL DIMENSIONS. ANY DISCREPANCY MUST BE REPORTED TO M. DAVID BLAKELY ARCHITECT INC.
 2. ALL WORK AND MATERIALS TO BE IN COMPLIANCE WITH ALL CODES, REGULATIONS, & BY-LAWS.
 3. ADDITIONAL DRAWINGS MAY BE ISSUED FOR CLARIFICATION TO ASSIST THE PROPER EXECUTION OF WORK. SUCH DRAWINGS WILL HAVE THE SAME MEANING AND INTENT AS IF THEY WERE INCLUDED WITH THE PLANS IN CONTRACT DOCUMENTS.
 4. DO NOT SCALE DRAWINGS.
 5. THIS DRAWING SHALL NOT BE USED OR COPIED WITHOUT THE AUTHORIZATION OF THE ARCHITECT.
 6. THIS DRAWING SHALL NOT BE USED FOR PERMIT OR CONSTRUCTION UNLESS THE DRAWING BEARS THE ARCHITECT'S SEAL AND SIGNATURE.

OWNER: PHOENIX HOMES
 18A BENTLEY AVE.
 OTTAWA, ON K2E 6T8
 (613) 723-9227

ARCHITECT: M. DAVID BLAKELY ARCHITECT INC.
 2200 PRINCE OF WALES DR., SUITE 101
 OTTAWA, ON K2E 6Z9
 (613) 226-8811

CIVIL ENGINEER: IBI GROUP
 333 PRESTON STREET #400
 OTTAWA, ON K1S 5N4
 (613) 225-1311

LANDSCAPE ARCHITECT: JAMES B. LENNOX AND ASSOCIATES INC.
 3332 CARLING AVE.
 NEPEAN, ON K2H 5A8
 (613) 722-5148

SURVEYOR: ANNIS O'SULLIVAN VOLLEBECK LTD.
 14 CONCOURSE GATE, SUITE 500
 NEPEAN, ON K2E 7S6
 (613) 727-0850

12.									
11.									
10.									
9.									
8.									
7.									
6.									
5.									
4.									
3.									
2.	10/08/20	FOR RESUBMISSION	MB	14.					
1.	18/11/19	FOR SITE PLAN SUBMISSION	MB	13.					
No.	DATE	DESCRIPTION	INT.	No.	DATE	DESCRIPTION	INT.		

24.									
23.									
22.									
21.									
20.									
19.									
18.									
17.									
16.									
15.									
14.									
13.									
No.	DATE	DESCRIPTION	INT.	No.	DATE	DESCRIPTION	INT.		

A B C

A - DETAIL NUMBER
 B - SHEET NUMBER (DETAIL REQUIRED)
 C - SHEET NUMBER (DETAIL LOCATION)

PROJECT: PATHWAYS | BLOCK 232
 PLANNED UNIT DEVELOPMENT
 1055 CEDAR CREEK DRIVE
 OTTAWA, ONTARIO

CURT: PHOENIX HOMES
 18A Bentley Ave Ottawa, ON K2E 6T8

DRAWING TITLE: ACCESSORY BUILDING
 ELEVATIONS

DATE: NOV. 2019

SCALE: 1 : 100

SHEET NO. REV NO.: A8

DRAWN BY: mdb

CHECKED: MDB

D07-12-20-0037