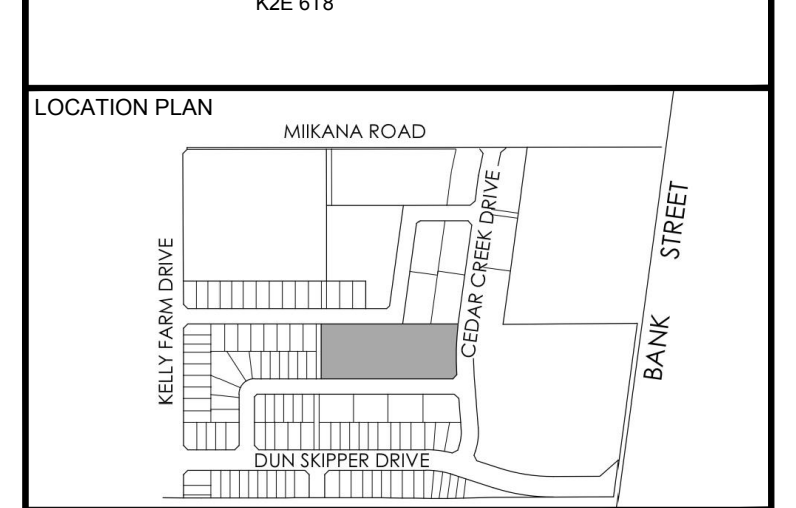


CLIENT: PHOENIX HOMES  
18A BENTLEY AVE, OTTAWA, ON.  
K2E 6T8



CONSULTANTS  
ARCHITECTS: M. David Blakey Architect Inc.  
230 Prince of Wales Dr. Suite 101, Ottawa, ON.  
Tel: (613) 226-8811 K2E 6Z9

CIVIL ENGINEERS: Novatech Engineering Consultants Ltd.  
Suite 200A, 240 McNeil Court Drive Ottawa ON, K2M 1P6  
Tel: (613) 724-9843

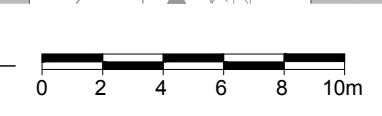
SURVEYORS: Annis O'Sullivan Vollebek Ltd.  
114 Concourse Gate, Suite 500  
Napanee, ON  
Tel: (613) 721-6865

- LEGEND
- PROPOSED DECIDUOUS TREE
  - PROPOSED CONIFEROUS TREE
  - PROPOSED SHRUBS / ORNAMENTAL GRASSES
  - PROPOSED SODDED GRASS AREA
  - PROPOSED RESILIENT SURFACE AREA
  - PROPOSED BENCH
  - PROPOSED RAISED CONCRETE PLANTER
  - PROPOSED RIVERSTONE MULCH

3	REVISED PER FORESTRY COMMENTS	02/12/2021	ML	JL
2	REVISED PER CITY COMMENTS	08/20/2020	ML	JL
1	ISSUED FOR DISCUSSION AND REVIEW	01/28/2020	ML	JL
No.	Issue	Date	ML	DR
		ML/DR/CK		

JAMES B. LENNOX & ASSOCIATES INC.  
LANDSCAPE ARCHITECTS  
3332 CARLING AVE. OTTAWA, ONTARIO K2H 5A8  
Tel: (613) 722-5168 Fax: (866) 343-3942

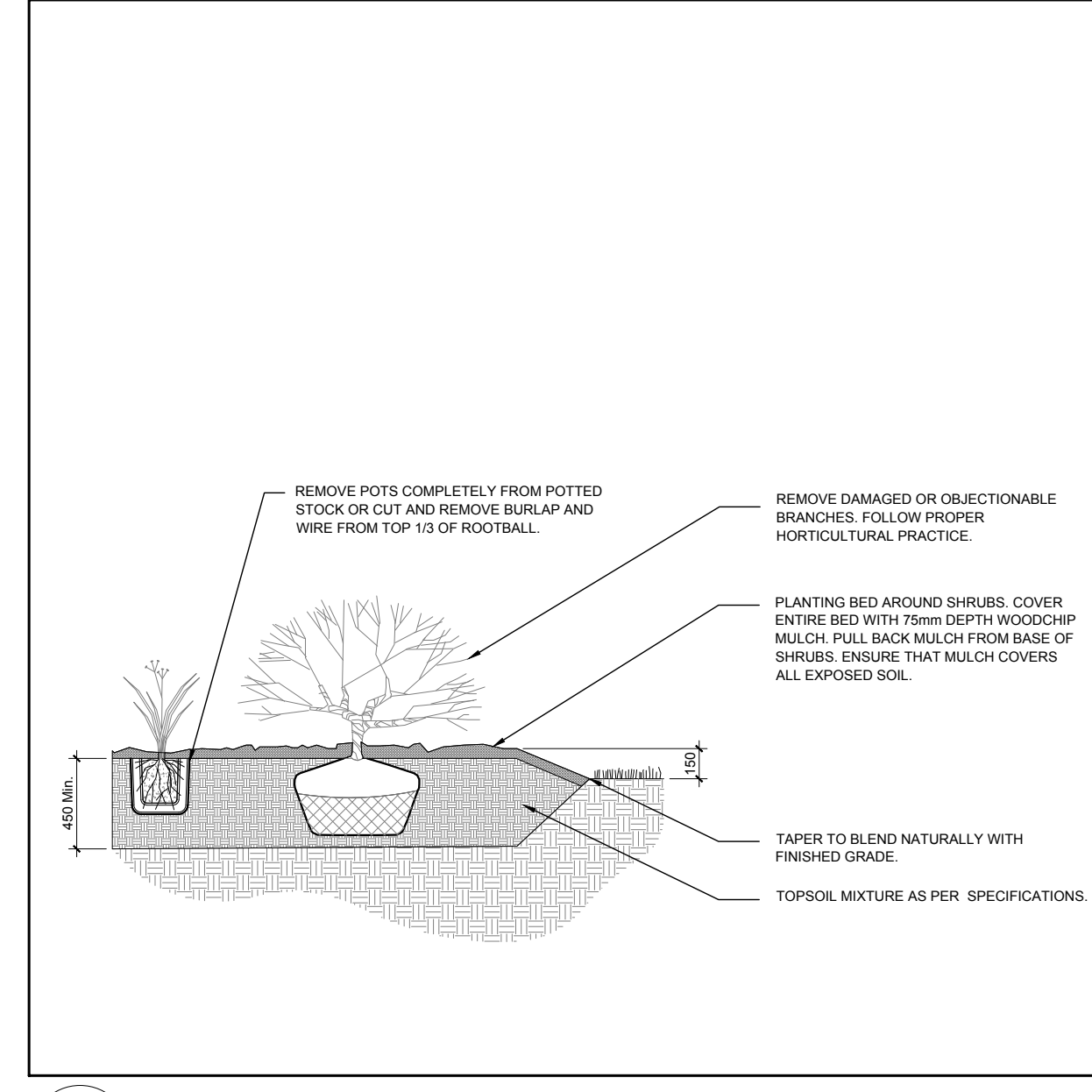
1 LANDSCAPE PLAN  
SCALE: 1:250



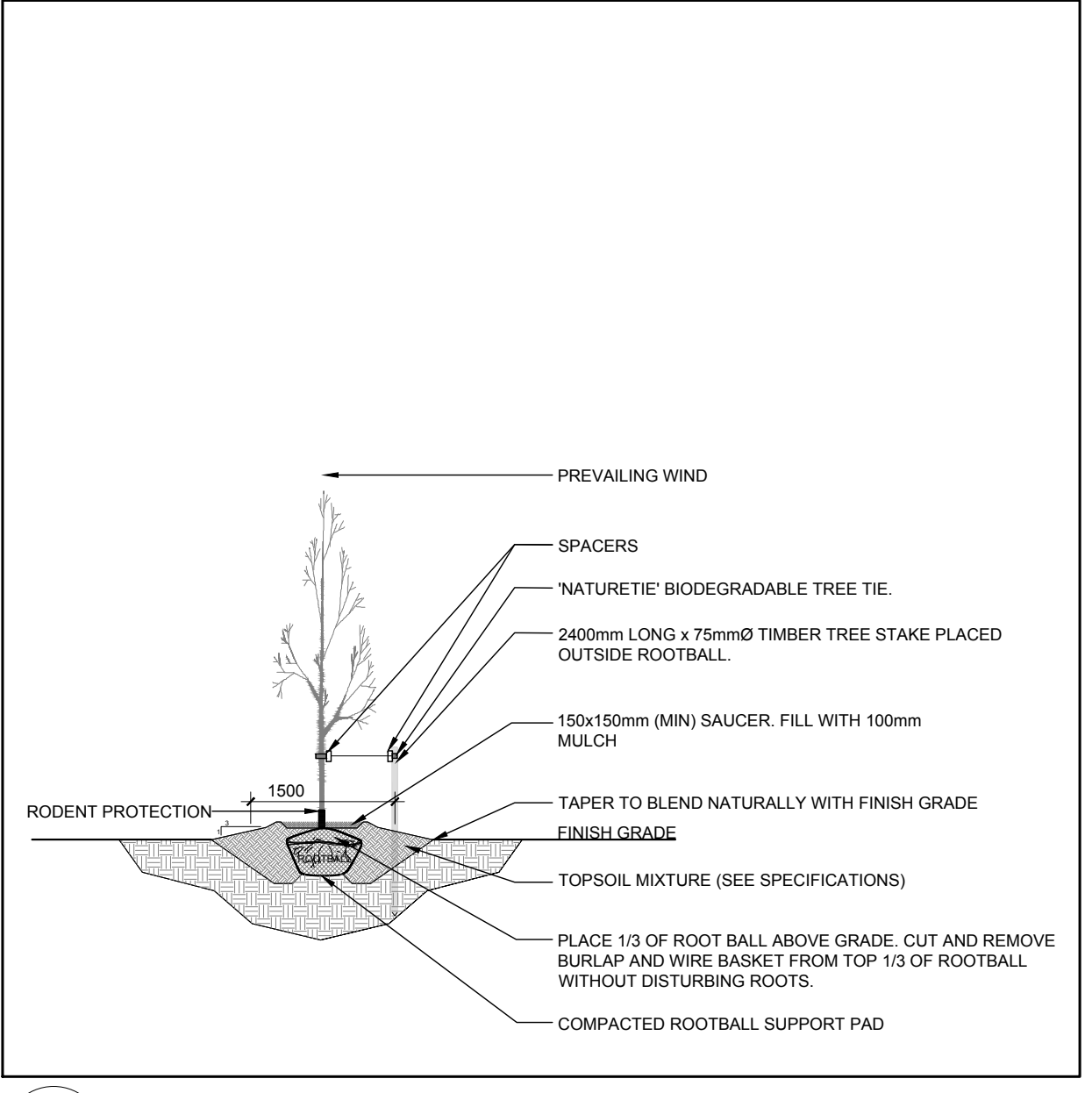
**APPROVED**  
By Lily Xu at 4:10 pm, Mar 04, 2021

*Lily Xu*  
**LILY XU, MCIP, RPP**  
MANAGER, DEVELOPMENT REVIEW SOUTH  
PLANNING, INFRASTRUCTURE & ECONOMIC  
DEVELOPMENT DEPARTMENT, CITY OF OTTAWA

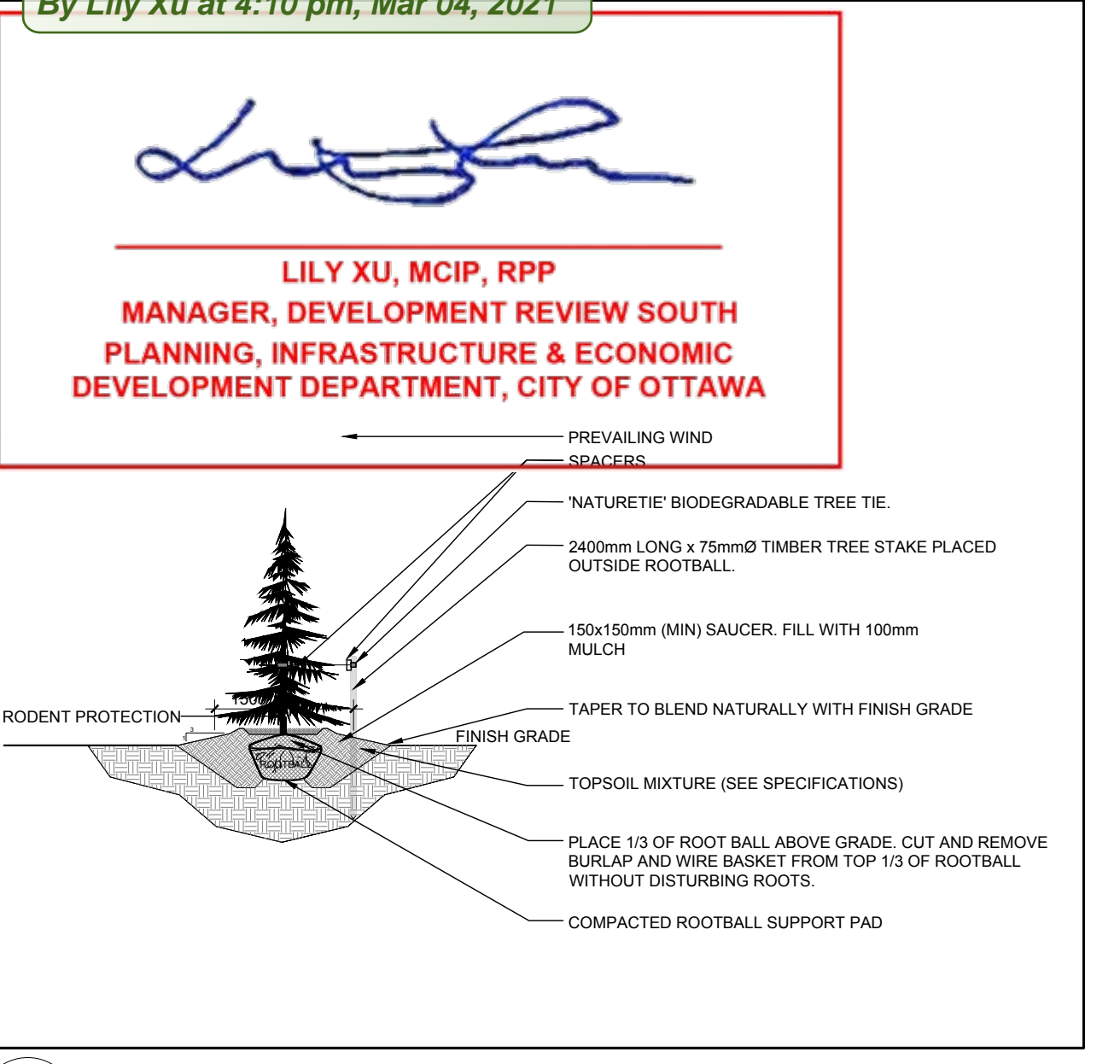
KEY	QTY	BOTANICAL NAME	COMMON NAME	SIZE	CONDITION	REMARKS
<b>TREES</b>						
CS	6	Picea pungens	Colorado Spruce	1.8m Ht.	B&B	Male tree
GB	4	Ginkgo biloba	Maidenhair Tree	60mm ø	B&B	
HB	7	Celtis occidentalis	Hackberry	60mm ø	B&B	
HL	12	Gleditsia triacanthos	Honey Locust	60mm ø	B&B	
JL	1	Syringa reticulata	Japanese Tree Lilac	60mm ø	B&B	Single leader
<b>SHRUBS</b>						
AH	49	Hydrangea arborescens 'Annabelle'	Annabelle Hydrangea	3 gal. pot	Potted	1000 mm o.c.
AW	76	Spiraea japonica 'Anthony Waterer'	Anthony Waterer Spirea	600mm ht.	Potted	1000 mm o.c.
DN	10	Physocarpus opulifolius 'Little Devil'	Little Devil Ninebark	600mm ht.	Potted	800 mm o.c.
FS	30	Rhus aromatica 'Gro-Low'	Gro-Low Fragrant Sumac	600mm ht.	Potted	800 mm o.c.
MP	18	Pinus mugo 'Pumilio'	Dwarf Mugo Pine	600mm spr.	Potted	1000 mm o.c.
PF	106	Potentilla fruticosa 'Abbotswood'	Abbotswood Potentilla	600mm ht.	Potted	800 mm o.c.
PG	32	Potentilla fruticosa 'Goldfinger'	Goldfinger Potentilla	600mm ht.	Potted	800 mm o.c.
PL	8	Syringa vulgaris	Common Purple Lilac	1200mm ht.	Potted	1500 mm o.c.
PP	101	Spiraea japonica 'Little Princess'	Little Princess Spirea	600mm ht.	Potted	800 mm o.c.
RER	19	Rosa rugosa	Rugosa rose	800 mm ht.	Potted	1000 mm o.c.
SJ	20	Potentilla fruticosa 'Pink Beauty'	Pink Beauty Potentilla	600mm ht.	Potted	800 mm o.c.
SS	103	Sorbaria sorbifolia 'Sem'	Sem False Spirea	600mm ht.	Potted	1000 mm o.c.
TJ	22	Juniperus sabina 'Tamarascifolia'	Tamarisk Juniper	600mm spr.	Potted	1000 mm o.c.
<b>PERENNIALS / ORNAMENTAL GRASSES</b>						
AJ	26	Sedum 'Autumn Joy'	Autumn Joy Stonecrop	100mm pot	Potted	500 mm o.c.
BS	18	Rudbeckia fulgida 'Goldsturm'	Yellow Coneflower	100mm pot	Potted	500 mm o.c.
DL	34	Heremacallis 'Stella D'Oro'	Stella D'Oro Daylily	100mm pot	Potted	500 mm o.c.
KF	262	Calamagrostis 'Karl Foerster'	Karl Foerster Grass	250mm pot	Potted	800 mm o.c.
SG	82	Panicum virgatum 'Shenandoah'	Shenandoah Switch Grass	250mm pot	Potted	800 mm o.c.



2 SHRUB / ORNAMENTAL GRASS / PERENNIAL PLANTING  
SCALE: NTS



3 DECIDUOUS TREE PLANTING  
SCALE: NTS



4 CONIFEROUS TREE PLANTING  
SCALE: NTS

PROJECT  
PATHWAYS - BLOCK 232  
PLANNED UNIT DEVELOPMENT  
1055 CEDAR CREEK DR. OTTAWA, ONTARIO

DRAWING  
LANDSCAPE PLAN

STAMP  
SCALE  
AS SHOWN  
START DATE  
NOVEMBER, 2019  
PROJECT NO.  
20DCR2008

PROJECT NORTH  
DRAWING NO.  
**L.1**  
PLOT SIZE ARCH-D

D07-12-20-0037