

2 WEST ELEVATION (PARKING)  
A1 SCALE: 1:100



1 SOUTH ELEVATION  
A1 SCALE: 1:100



4 NORTH ELEVATION  
A1 SCALE: 1:100



3 EAST ELEVATION (STREET)  
A1 SCALE: 1:100

**EXTERIOR COLOURS- PALETTE 1**

- BRICK: MERIDIAN- COVENTRY
- STONE: BRAMTON FINESSE- CANVAS BEIGE, SUAVE
- SIDING: KAYCAN- VINYL- CATLEMORE
- WINDOWS: JELDWEN- CHESTNUT BRONZE
- PANELS: HARDI- TO MATCH COMMERCIAL BROWN
- ALUMINUM SOFFIT/ FASCIA: KAYCAN- COMMERCIAL BROWN
- ALUMINUM RAILINGS: COMMERCIAL BROWN
- HARDI BOARD COLUMNS: TO MATCH COMMERCIAL BROWN
- ASPHALT SHINGLES: DARK BROWN

**M. David Blakely  
Architect Inc.**  
2330 Prince of Wales Dr., Suite 101 Ottawa, Ontario  
Phone (613) 226-8811 Fax (613) 226-7942 K2E 6Z9

**GENERAL NOTES:**  
1. THE CONTRACTOR IS RESPONSIBLE FOR CHECKING AND VERIFYING ALL DIMENSIONS. ANY DISCREPANCY MUST BE REPORTED TO M. DAVID BLAKELY ARCHITECT INC.  
2. ALL WORK AND MATERIALS TO BE IN COMPLIANCE WITH ALL CODES, REGULATIONS, & BY-LAWS  
3. ADDITIONAL DRAWINGS MAY BE ISSUED FOR CLARIFICATION TO ASSIST THE PROPER EXECUTION OF WORK. SUCH DRAWINGS WILL HAVE THE SAME MEANING AND INTENT AS IF THEY WERE INCLUDED WITH THE PLANS IN CONTRACT DOCUMENTS  
4. DO NOT SCALE DRAWINGS.  
5. THIS DRAWING SHALL NOT BE USED OR COPIED WITHOUT THE AUTHORIZATION OF THE ARCHITECT  
6. THIS DRAWING SHALL NOT BE USED FOR PERMIT OR CONSTRUCTION UNLESS THE DRAWING BEARS THE ARCHITECT'S SEAL AND SIGNATURE

**OWNER:** PHOENIX HOMES  
18A BENTLEY AVE.  
OTTAWA, ON K2E 6T8  
(613) 723-9227

**ARCHITECT:** M. DAVID BLAKELY ARCHITECT INC.  
2200 PRINCE OF WALES DR., SUITE 101  
OTTAWA, ON K2E 6Z9  
(613) 226-8811

**CIVIL ENGINEER:** IBI GROUP  
332 PRESTON STREET #400  
OTTAWA, ON K1S 5N4  
(613) 225-1311

**LANDSCAPE ARCHITECT:** JAMES B. LENNOX AND ASSOCIATES INC.  
3332 CARLING AVE.  
NEPEAN, ON K2H 5A8  
(613) 722-5148

**SURVEYOR:** ANNIS OSULLIVAN VOLLEBECK LTD.  
14 CONCOURSE GATE, SUITE 500  
NEPEAN, ON K2E 7S6  
(613) 727-0850

SEAL

NO.	DATE	DESCRIPTION	INT.	NO.	DATE	DESCRIPTION	INT.
12.				24.			
11.				23.			
10.				22.			
9.				21.			
8.				20.			
7.				19.			
6.				18.			
5.				17.			
4.				16.			
3.				15.			
2.	10/08/20	FOR RESUBMISSION	MB	14.			
1.	11/18/17	FOR SITE PLAN SUBMISSION	MB	13.			

A - DETAIL NUMBER  
B - SHEET NUMBER (DETAIL REQUIRED)  
C - SHEET NUMBER (DETAIL LOCATION)

**PROJECT:** PATHWAYS | BLOCK 232  
PLANNED UNIT DEVELOPMENT  
1055 CEDAR CREEK DRIVE  
OTTAWA, ONTARIO

**CURT:** PHOENIX HOMES  
18A Bentley Ave Ottawa, ON K2E 6T8

**DRAWING TITLE:** BUILDING 1 ELEVATIONS  
BACK-TO-BACK STACKED  
TERRACE HOMES

**DATE:** NOV. 2019

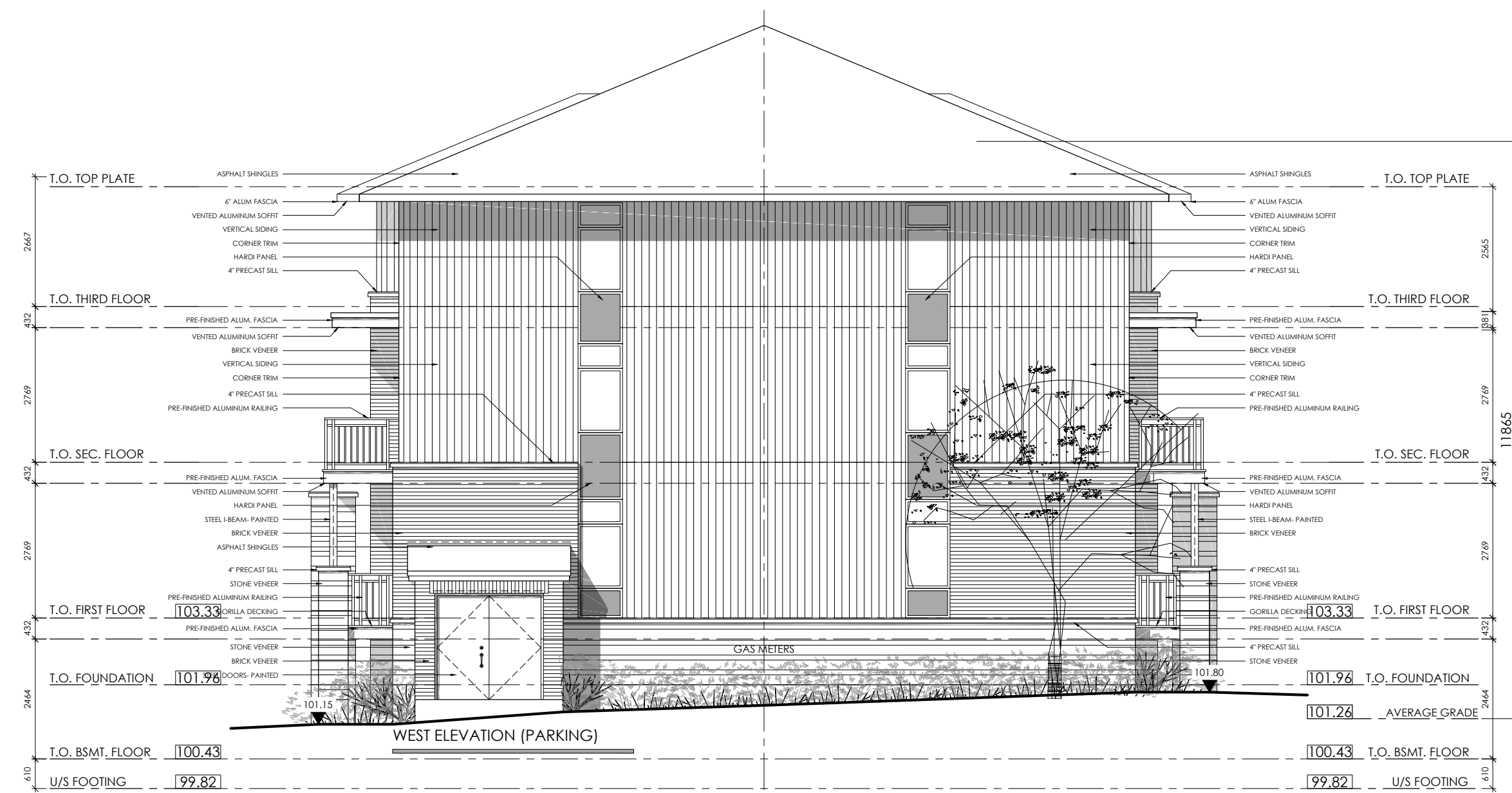
**SCALE:** 1 : 100

**SHEET NO. REV. NO.:** A1

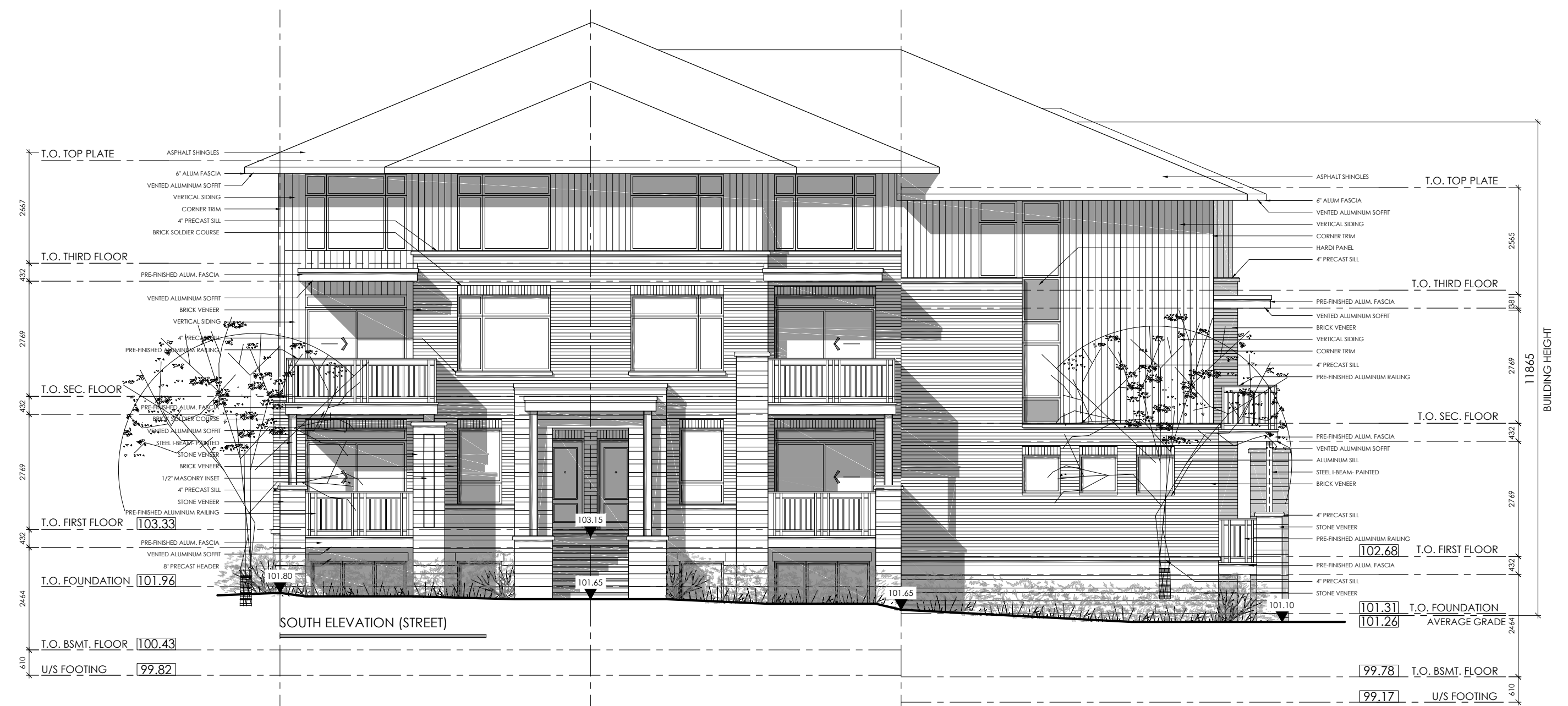
**DRAWN BY:** mdb

**CHECKED:** MDB

D07-12-20-0037



2 WEST ELEVATION (PARKING)  
A2 SCALE: 1:100



1 SOUTH ELEVATION  
A2 SCALE: 1:100



4 NORTH ELEVATION  
A2 SCALE: 1:100



3 EAST ELEVATION (STREET)  
A2 SCALE: 1:100

**EXTERIOR COLOURS- PALETTE 1**

- BRICK: MERIDIAN- COVENTRY
- STONE: BRAMTON FINESSE- CANVAS BEIGE, SUAVE
- SIDING: KAYCAN- VINYL- CATLEMORE
- WINDOWS: JELDWEN- CHESTNUT BRONZE
- PANELS: HARDI- TO MATCH COMMERCIAL BROWN
- ALUMINUM SOFFIT/ FASCIA: KAYCAN- COMMERCIAL BROWN
- ALUMINUM RAILINGS: COMMERCIAL BROWN
- HARDI BOARD COLUMNS: TO MATCH COMMERCIAL BROWN
- ASPHALT SHINGLES: DARK BROWN

NO.	DATE	DESCRIPTION	INT.	NO.	DATE	DESCRIPTION	INT.
12.				24.			
11.				23.			
10.				22.			
9.				21.			
8.				20.			
7.				19.			
6.				18.			
5.				17.			
4.				16.			
3.				15.			
2.	10/09/20	FOR RESUBMISSION	MB	14.			
1.	10/11/19	FOR SITE PLAN SUBMISSION	MB	13.			





2 WEST ELEVATION  
A3 SCALE: 1:100



1 SOUTH ELEVATION (STREET SIDE)  
A3 SCALE: 1:100



4 NORTH ELEVATION (PARKING SIDE)  
A3 SCALE: 1:100



3 EAST ELEVATION  
A3 SCALE: 1:100

**EXTERIOR COLOURS- PALETTE 2**

- BRICK: MERIDIAN- CAVENDISH
- STONE: BRAMTON FINESSE- MINERAL GREY, SUAVE
- SIDING: KAYCAN- VINYL- BISQUE
- WINDOWS: JELDWEN- SABLE
- PANELS: HARDI- TO MATCH CHARCOAL
- ALUMINUM SOFFIT/ FASCIA: KAYCAN- CHARCOAL
- ALUMINUM RAILINGS: CHARCOAL
- HARDI BOARD COLUMNS: TO MATCH CHARCOAL
- ASPHALT SHINGLES: DUAL BLACK

**M. David Blakely Architect Inc.**  
2330 Prince of Wales Dr., Suite 101 Ottawa, Ontario  
Phone (613) 226-8811 Fax (613) 226-7942 K2E 6Z9

**GENERAL NOTES:**  
1. THE CONTRACTOR IS RESPONSIBLE FOR CHECKING AND VERIFYING DIMENSIONS. ANY DISCREPANCY MUST BE REPORTED TO M. DAVID BLAKELY ARCHITECT INC.  
2. ALL WORK AND MATERIALS TO BE IN COMPLIANCE WITH ALL CODES, REGULATIONS, & BY-LAWS.  
3. ADDITIONAL DRAWINGS MAY BE ISSUED FOR CLARIFICATION TO ASSIST THE PROPER EXECUTION OF WORK. SUCH DRAWINGS WILL HAVE THE SAME MEANING AND INTENT AS IF THEY WERE INCLUDED WITH THE PLANS IN CONTRACT DOCUMENTS.  
4. DO NOT SCALE DRAWINGS.  
5. THIS DRAWING SHALL NOT BE USED OR COPIED WITHOUT THE AUTHORIZATION OF THE ARCHITECT.  
6. THIS DRAWING SHALL NOT BE USED FOR PERMIT OR CONSTRUCTION UNLESS THE DRAWING BEARS THE ARCHITECT'S SEAL AND SIGNATURE.

**OWNER:** PHOENIX HOMES  
18A BENTLEY AVE.  
OTTAWA, ON K2E 6T8  
(613) 723-9227

**ARCHITECT:** M. DAVID BLAKELY ARCHITECT INC.  
2200 PRINCE OF WALES DR., SUITE 101  
OTTAWA, ON K2E 6Z9  
(613) 226-8811

**CIVIL ENGINEER:** IBI GROUP  
332 PRESTON STREET #400  
OTTAWA, ON K1S 5N4  
(613) 225-1311

**LANDSCAPE ARCHITECT:** JAMES B. LENNOX AND ASSOCIATES INC.  
3332 CARLING AVE.  
NEPEAN, ON K2H 5A8  
(613) 722-5148

**SURVEYOR:** ANNIS OSULLIVAN VOLLEBECK LTD.  
14 CONCOURSE GATE, SUITE 500  
NEPEAN, ON K2E 7S6  
(613) 727-0850

**SEAL**

12.					
11.					
10.					
9.					
8.					
7.					
6.					
5.					
4.					
3.					
2.	10/08/20	FOR RESUBMISSION	MB		
1.	11/17/19	FOR SITE PLAN SUBMISSION	MB		
No.	DATE	DESCRIPTION	INT.	DATE	DESCRIPTION

**REVISIONS**

24.					
23.					
22.					
21.					
20.					
19.					
18.					
17.					
16.					
15.					
14.					
13.					
No.	DATE	DESCRIPTION	INT.	DATE	DESCRIPTION

**A B C**

A - DETAIL NUMBER  
B - SHEET NUMBER (DETAIL REQUIRED)  
C - SHEET NUMBER (DETAIL LOCATION)

**PROJECT:** PATHWAYS | BLOCK 232  
PLANNED UNIT DEVELOPMENT  
1055 CEDAR CREEK DRIVE  
OTTAWA, ONTARIO

**CURT:** PHOENIX HOMES  
18A Bentley Ave Ottawa, ON K2E 6T8

**DRAWING TITLE:** BUILDING 3 ELEVATIONS  
18 UNIT APARTMENT

**DATE:** NOV. 2019

**SCALE:** 1 : 100

**DRAWN BY:** mdb

**CHECKED:** MDB

**SHEET NO. REV. NO.:** A3

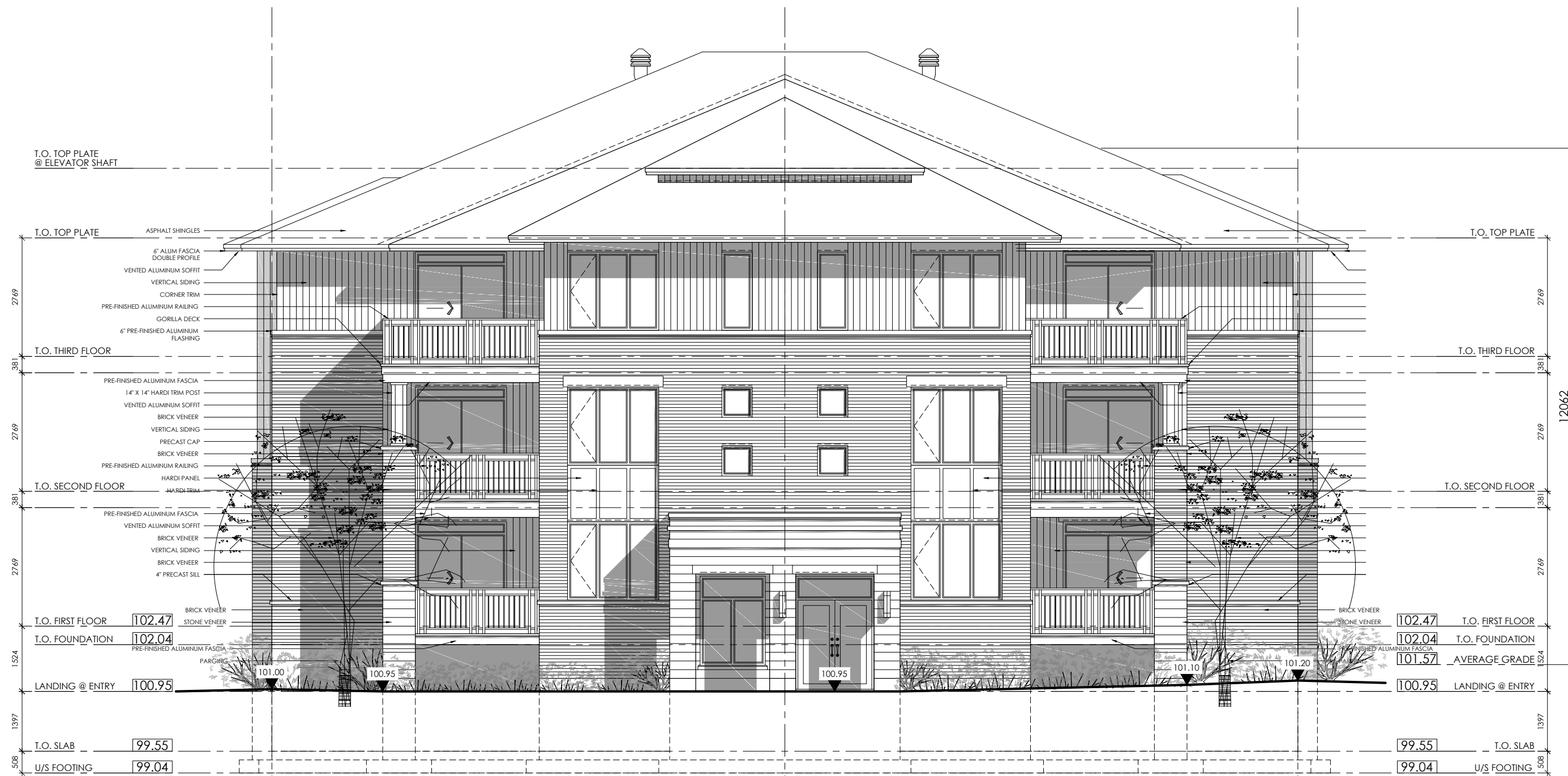
D07-12-20-0037



2 WEST ELEVATION  
A4 SCALE: 1:100



1 SOUTH ELEVATION (STREET SIDE)  
A4 SCALE: 1:100



4 NORTH ELEVATION (PARKING SIDE)  
A4 SCALE: 1:100



3 EAST ELEVATION  
A4 SCALE: 1:100

**EXTERIOR COLOURS- PALETTE 2**

- BRICK: MERIDIAN- CAVENDISH
- STONE: BRAMTON FINESSE- MINERAL GREY, SUAVE
- SIDING: KAYCAN- VINYL- BISQUE
- WINDOWS: JELDWEN- SABLE
- PANELS: HARDI- TO MATCH CHARCOAL
- ALUMINUM SOFFIT/ FASCIA: KAYCAN- CHARCOAL
- ALUMINUM RAILINGS: CHARCOAL
- HARDI BOARD COLUMNS: TO MATCH CHARCOAL
- ASPHALT SHINGLES: DUAL BLACK

**M. David Blakely Architect Inc.**  
2330 Prince of Wales Dr., Suite 101 Ottawa, Ontario  
Phone (613) 226-8811 Fax (613) 226-7942 K2E 6Z9

**GENERAL NOTES:**  
1. THE CONTRACTOR IS RESPONSIBLE FOR CHECKING AND VERIFYING ALL DIMENSIONS. ANY DISCREPANCY MUST BE REPORTED TO M. DAVID BLAKELY ARCHITECT INC.  
2. ALL WORK AND MATERIALS TO BE IN COMPLIANCE WITH ALL CODES, REGULATIONS, & BY-LAWS.  
3. ADDITIONAL DRAWINGS MAY BE ISSUED FOR CLARIFICATION TO ASSIST THE PROPER EXECUTION OF WORK. SUCH DRAWINGS WILL HAVE THE SAME MEANING AND INTENT AS IF THEY WERE INCLUDED WITH THE PLANS IN CONTRACT DOCUMENTS.  
4. DO NOT SCALE DRAWINGS.  
5. THIS DRAWING SHALL NOT BE USED OR COPIED WITHOUT THE AUTHORIZATION OF THE ARCHITECT.  
6. THIS DRAWING SHALL NOT BE USED FOR PERMIT OR CONSTRUCTION UNLESS THE DRAWING BEARS THE ARCHITECT'S SEAL AND SIGNATURE.

**OWNER:** PHOENIX HOMES  
18A BENTLEY AVE.  
OTTAWA, ON K2E 6T8  
(613) 723-9227

**ARCHITECT:** M. DAVID BLAKELY ARCHITECT INC.  
2200 PRINCE OF WALES DR., SUITE 101  
OTTAWA, ON K2E 6Z9  
(613) 226-8811

**CIVIL ENGINEER:** IBI GROUP  
332 PRESTON STREET #400  
OTTAWA, ON K1S 5N4  
(613) 225-1311

**LANDSCAPE ARCHITECT:** JAMES B. LENNOX AND ASSOCIATES INC.  
3332 CARLING AVE.  
NEPEAN, ON K2H 5A8  
(613) 722-5148

**SURVEYOR:** ANNIS OSULLIVAN VOLLEBEK LTD.  
14 CONCOURSE GATE, SUITE 500  
NEPEAN, ON K2E 7S4  
(613) 727-0850

SEAL

No.	DATE	DESCRIPTION	INT.	No.	DATE	DESCRIPTION	INT.
12.				24.			
11.				23.			
10.				22.			
9.				21.			
8.				20.			
7.				19.			
6.				18.			
5.				17.			
4.				16.			
3.				15.			
2.	10/08/20	FOR RESUBMISSION	MB	14.			
1.	11/18/17	FOR SITE PLAN SUBMISSION	MB	13.			

A - DETAIL NUMBER  
B - SHEET NUMBER (DETAIL REQUIRED)  
C - SHEET NUMBER (DETAIL LOCATION)

**PROJECT:** PATHWAYS | BLOCK 232  
PLANNED UNIT DEVELOPMENT  
1055 CEDAR CREEK DRIVE  
OTTAWA, ONTARIO

**CURT:** PHOENIX HOMES  
18A Bentley Ave Ottawa, ON K2E 6T8

**DRAWING TITLE:** BUILDING 4 ELEVATIONS  
18 UNIT APARTMENT

**DATE:** NOV. 2019

**SCALE:** 1 : 100

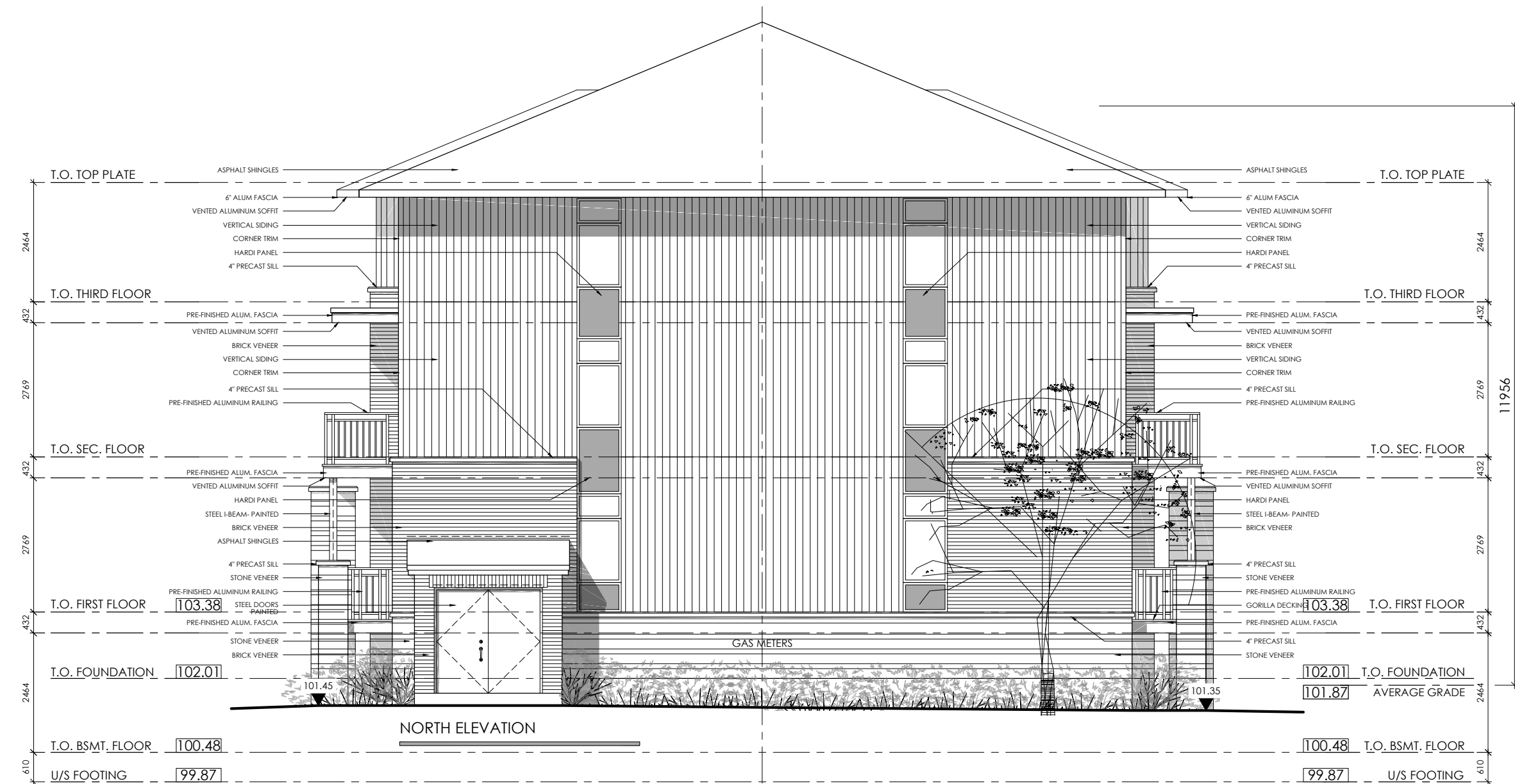
**DRAWN BY:** mdb

**CHECKED:** MDB

**SHEET NO. REV. NO.:** A4

D07-12-20-0037





2 NORTH ELEVATION  
A5 SCALE: 1:100



1 WEST ELEVATION  
A5 SCALE: 1:100



4 EAST ELEVATION  
A5 SCALE: 1:100



3 SOUTH ELEVATION (STREET)  
A5 SCALE: 1:100

**EXTERIOR COLOURS- PALETTE 1**

- BRICK: MERIDIAN- COVENTRY
- STONE: BRAMTON FINESSE- CANVAS BEIGE, SUAVE
- SIDING: KAYCAN- VINYL- CATLEMORE
- WINDOWS: JELDWEN- CHESTNUT BRONZE
- PANELS: HARDI- TO MATCH COMMERCIAL BROWN
- ALUMINUM SOFFIT/ FASCIA: KAYCAN- COMMERCIAL BROWN
- ALUMINUM RAILINGS: COMMERCIAL BROWN
- HARDI BOARD COLUMNS: TO MATCH COMMERCIAL BROWN
- ASPHALT SHINGLES: DARK BROWN

**M. David Blakely  
Architect Inc.**  
2330 Prince of Wales Dr., Suite 101 Ottawa, Ontario  
Phone (613) 226-8811 Fax (613) 226-7942 K2E 6Z9

**GENERAL NOTES:**

1. THE CONTRACTOR IS RESPONSIBLE FOR CHECKING AND VERIFYING ALL DIMENSIONS. ANY DISCREPANCY MUST BE REPORTED TO M. DAVID BLAKELY ARCHITECT INC.
2. ALL WORK AND MATERIALS TO BE IN COMPLIANCE WITH ALL CODES, REGULATIONS, & BY-LAWS.
3. ADDITIONAL DRAWINGS MAY BE ISSUED FOR CLARIFICATION TO ASSIST THE PROPER EXECUTION OF WORK. SUCH DRAWINGS WILL HAVE THE SAME MEANING AND INTENT AS IF THEY WERE INCLUDED WITH THE PLANS IN CONTRACT DOCUMENTS.
4. DO NOT SCALE DRAWINGS.
5. THIS DRAWING SHALL NOT BE USED OR COPIED WITHOUT THE AUTHORIZATION OF THE ARCHITECT.
6. THIS DRAWING SHALL NOT BE USED FOR PERMIT OR CONSTRUCTION UNLESS THE DRAWING BEARS THE ARCHITECT'S SEAL AND SIGNATURE.

**OWNER:** PHOENIX HOMES  
18A BENTLEY AVE.  
OTTAWA, ON K2E 6T8  
(613) 723-9227

**ARCHITECT:** M. DAVID BLAKELY ARCHITECT INC.  
2200 PRINCE OF WALES DR., SUITE 101  
OTTAWA, ON K2E 6Z9  
(613) 226-8811

**CIVIL ENGINEER:** IBI GROUP  
333 PRESTON STREET #400  
OTTAWA, ON K1S 5N4  
(613) 225-1311

**LANDSCAPE ARCHITECT:** JAMES B. LENNOX AND ASSOCIATES INC.  
3332 CARLING AVE.  
NEPEAN, ON K2H 5A8  
(613) 722-5168

**SURVEYOR:** ANNIS O'SULLIVAN VOLLEBECK LTD.  
14 CONCOURSE GATE, SUITE 500  
NEPEAN, ON K2E 7S6  
(613) 727-0850

SEAL

No.	DATE	DESCRIPTION	INT.	DATE	DESCRIPTION	INT.
12.				24.		
11.				23.		
10.				22.		
9.				21.		
8.				20.		
7.				19.		
6.				18.		
5.				17.		
4.				16.		
3.				15.		
2.	10/08/20	FOR RESUBMISSION	MB	14.		
1.	11/18/17	FOR SITE PLAN SUBMISSION	MB	13.		

A  
B  
C

A - DETAIL NUMBER  
B - SHEET NUMBER (DETAIL REQUIRED)  
C - SHEET NUMBER (DETAIL LOCATION)

**PROJECT:** PATHWAYS | BLOCK 232  
PLANNED UNIT DEVELOPMENT  
1055 CEDAR CREEK DRIVE  
OTTAWA, ONTARIO

**CURT:** PHOENIX HOMES  
18A Bentley Ave Ottawa, ON K2E 6T8

**DRAWING TITLE:** BUILDING 5 ELEVATIONS  
BACK-TO-BACK STACKED  
TERRACE HOMES

**DATE:** NOV. 2019

**SCALE:** 1 : 100

**DRAWN BY:** mdb

**CHECKED:** MDB

**SHEET NO. REV. NO.:**  
A5

D07-12-20-0037



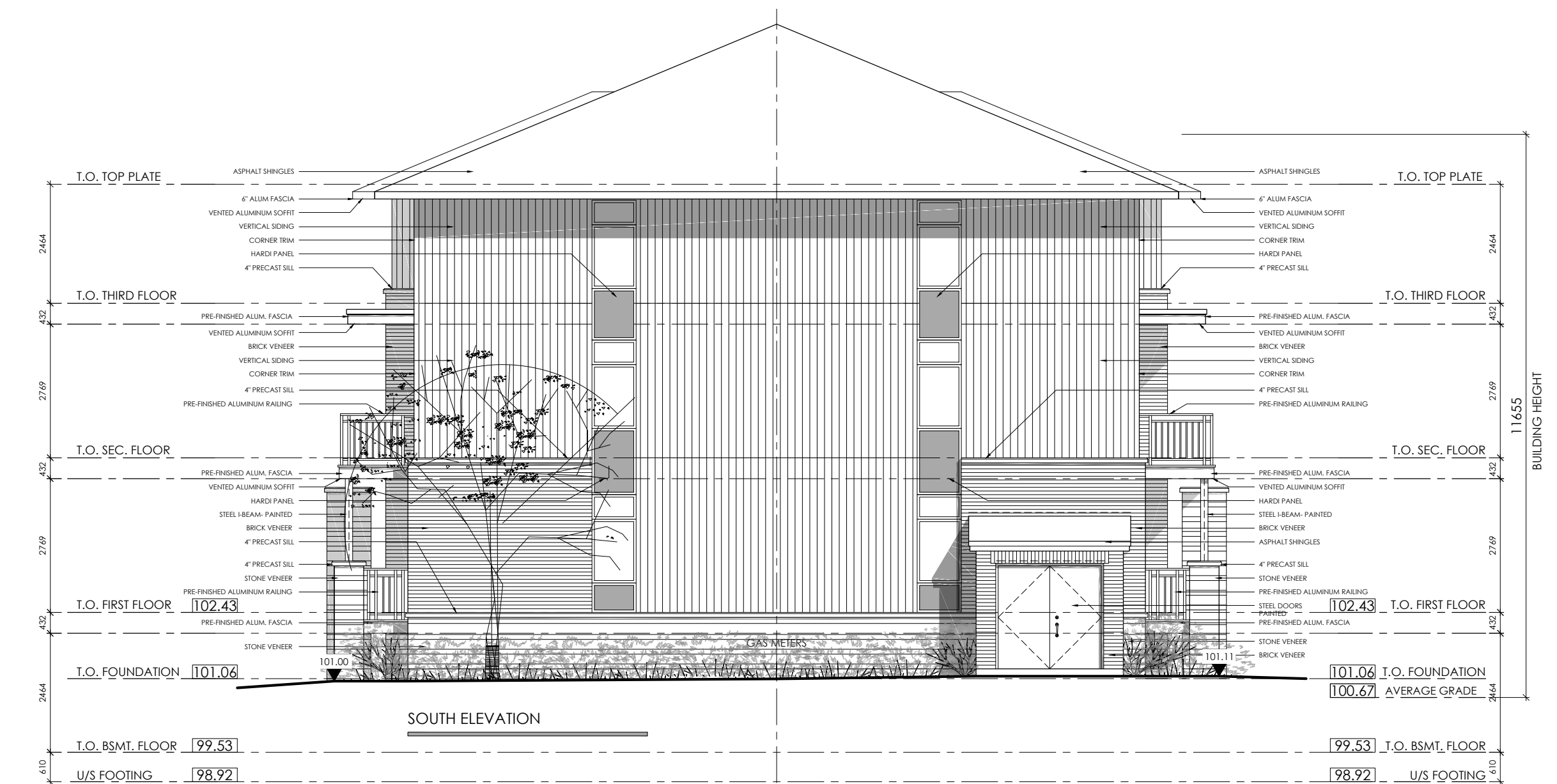
2 NORTH ELEVATION (STREET)  
A6 SCALE: 1:100



1 WEST ELEVATION  
A6 SCALE: 1:100



4 EAST ELEVATION  
A6 SCALE: 1:100



3 SOUTH ELEVATION  
A6 SCALE: 1:100

**EXTERIOR COLOURS- PALETTE 1**

- BRICK: MERIDIAN- COVENTRY
- STONE: BRAMTON FINESSE- CANVAS BEIGE, SUAVE
- SIDING: KAYCAN- VINYL- CATLEMORE
- WINDOWS: JELDWEN- CHESTNUT BRONZE
- PANELS: HARDI- TO MATCH COMMERCIAL BROWN
- ALUMINUM SOFFIT/ FASCIA: KAYCAN- COMMERCIAL BROWN
- ALUMINUM RAILINGS: COMMERCIAL BROWN
- HARDI BOARD COLUMNS: TO MATCH COMMERCIAL BROWN
- ASPHALT SHINGLES: DARK BROWN

**M. David Blakely Architect Inc.**  
2330 Prince of Wales Dr., Suite 101 Ottawa, Ontario  
Phone (613) 226-8811 Fax (613) 226-7942 K2E 6Z9

**GENERAL NOTES:**  
1. THE CONTRACTOR IS RESPONSIBLE FOR CHECKING AND VERIFYING ALL DIMENSIONS. ANY DISCREPANCY MUST BE REPORTED TO M. DAVID BLAKELY ARCHITECT INC.  
2. ALL WORK AND MATERIALS TO BE IN COMPLIANCE WITH ALL CODES, REGULATIONS, & BY-LAWS.  
3. ADDITIONAL DRAWINGS MAY BE ISSUED FOR CLARIFICATION TO ASSIST THE PROPER EXECUTION OF WORK. SUCH DRAWINGS WILL HAVE THE SAME MEANING AND INTENT AS IF THEY WERE INCLUDED WITH THE PLANS IN CONTRACT DOCUMENTS.  
4. DO NOT SCALE DRAWINGS.  
5. THIS DRAWING SHALL NOT BE USED OR COPIED WITHOUT THE AUTHORIZATION OF THE ARCHITECT.  
6. THIS DRAWING SHALL NOT BE USED FOR PERMIT OR CONSTRUCTION UNLESS THE DRAWING BEARS THE ARCHITECT'S SEAL AND SIGNATURE.

**OWNER:** PHOENIX HOMES  
18A BENTLEY AVE.  
OTTAWA, ON K2E 6T8  
(613) 723-9227

**ARCHITECT:** M. DAVID BLAKELY ARCHITECT INC.  
2200 PRINCE OF WALES DR., SUITE 101  
OTTAWA, ON K2E 6Z9  
(613) 226-8811

**CIVIL ENGINEER:** IBI GROUP  
3332 PRESTON STREET #400  
OTTAWA, ON K1S 5N4  
(613) 225-1311

**LANDSCAPE ARCHITECT:** JAMES B. LENNOX AND ASSOCIATES INC.  
3332 CARLING AVE.  
NEPEAN, ON K2H 5A8  
(613) 722-5168

**SURVEYOR:** ANNIS OSULLIVAN VOLLEBEKK LTD.  
14 CONCOURSE GATE, SUITE 500  
NEPEAN, ON K2E 7S6  
(613) 727-0850

SEAL

No.	DATE	DESCRIPTION	INT.	No.	DATE	DESCRIPTION	INT.
12.				24.			
11.				23.			
10.				22.			
9.				21.			
8.				20.			
7.				19.			
6.				18.			
5.				17.			
4.				16.			
3.				15.			
2.	10/08/20	FOR RESUBMISSION	MB	14.			
1.	11/18/17	FOR SITE PLAN SUBMISSION	MB	13.			

A  
B  
C

A - DETAIL NUMBER  
B - SHEET NUMBER (DETAIL REQUIRED)  
C - SHEET NUMBER (DETAIL LOCATION)

**PROJECT:** PATHWAYS | BLOCK 232  
PLANNED UNIT DEVELOPMENT  
1055 CEDAR CREEK DRIVE  
OTTAWA, ONTARIO

**CURT:** PHOENIX HOMES  
18A Bentley Ave Ottawa, ON K2E 6T8

**DRAWING TITLE:** BUILDING 6 ELEVATIONS  
BACK-TO-BACK STACKED  
TERRACE HOMES

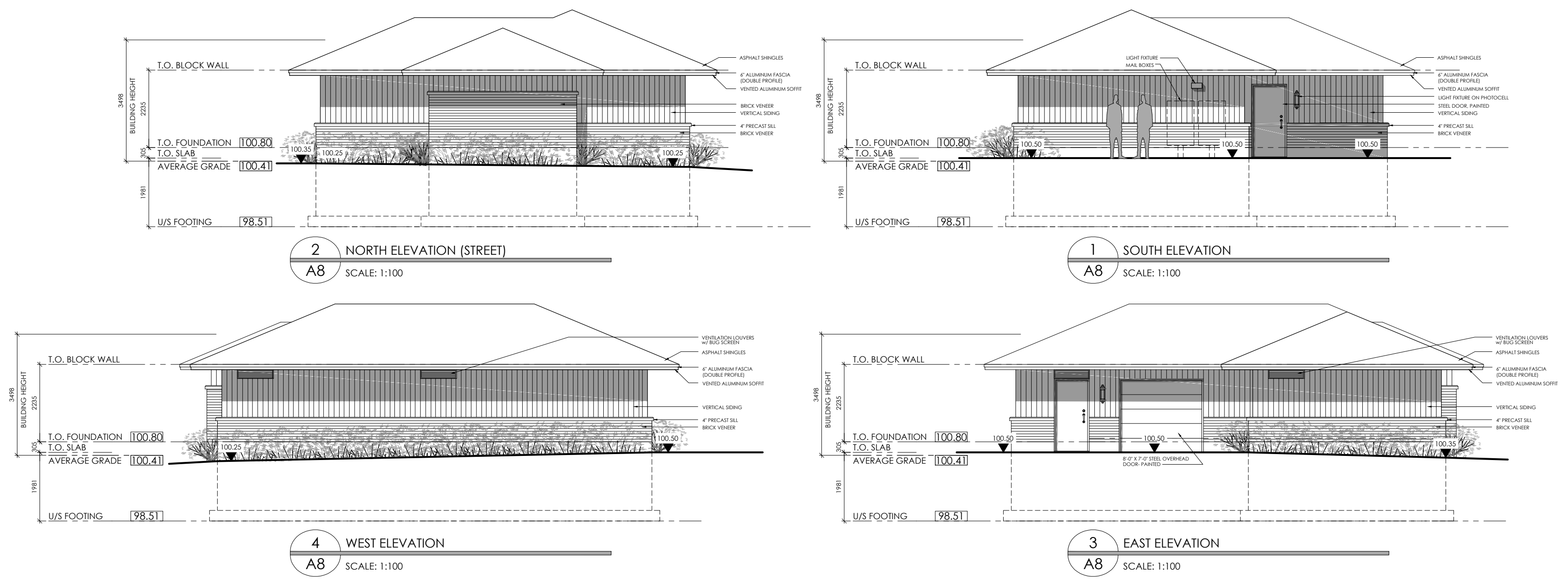
**DATE:** NOV. 2019  
**SCALE:** 1 : 100  
**SHEET NO. REV. NO.:** A6

**DRAWN BY:** mdb  
**CHECKED:** MDB

D07-12-20-0037







**EXTERIOR COLOURS- PALETTE 2**

- BRICK: MERIDIAN- CAVENDISH
- STONE: BRAMTON FINESSE- MINERAL GREY, SUAVE
- SIDING: KAYCAN- VINYL- BISQUE
- WINDOWS: JELDWEN- SABLE
- PANELS: HARDI- TO MATCH CHARCOAL
- ALUMINUM SOFFIT/ FASCIA: KAYCAN- CHARCOAL
- ALUMINUM RAILINGS: CHARCOAL
- HARDI BOARD COLUMNS: TO MATCH CHARCOAL
- ASPHALT SHINGLES: DUAL BLACK

**M. David Blakely Architect Inc.**  
 2330 Prince of Wales Dr., Suite 101, Ottawa, Ontario  
 Phone (613) 226-8811 Fax (613) 226-7942 K2E 6Z9

**GENERAL NOTES:**

1. THE CONTRACTOR IS RESPONSIBLE FOR CHECKING AND VERIFYING ALL DIMENSIONS. ANY DISCREPANCY MUST BE REPORTED TO M. DAVID BLAKELY ARCHITECT INC.
2. ALL WORK AND MATERIALS TO BE IN COMPLIANCE WITH ALL CODES, REGULATIONS, & BY-LAWS.
3. ADDITIONAL DRAWINGS MAY BE ISSUED FOR CLARIFICATION TO ASSIST THE PROPER EXECUTION OF WORK. SUCH DRAWINGS WILL HAVE THE SAME MEANING AND INTENT AS IF THEY WERE INCLUDED WITH THE PLANS IN CONTRACT DOCUMENTS.
4. DO NOT SCALE DRAWINGS.
5. THIS DRAWING SHALL NOT BE USED OR COPIED WITHOUT THE AUTHORIZATION OF THE ARCHITECT.
6. THIS DRAWING SHALL NOT BE USED FOR PERMIT OR CONSTRUCTION UNLESS THE DRAWING BEARS THE ARCHITECT'S SEAL AND SIGNATURE.

**OWNER:** PHOENIX HOMES  
 18A BENTLEY AVE.  
 OTTAWA, ON K2E 6T8  
 (613) 723-9227

**ARCHITECT:** M. DAVID BLAKELY ARCHITECT INC.  
 2200 PRINCE OF WALES DR., SUITE 101  
 OTTAWA, ON K2E 6Z9  
 (613) 226-8811

**CIVIL ENGINEER:** IBI GROUP  
 333 PRESTON STREET #400  
 OTTAWA, ON K1S 5N4  
 (613) 225-1311

**LANDSCAPE ARCHITECT:** JAMES B. LENNOX AND ASSOCIATES INC.  
 3332 CARLING AVE.  
 NEPEAN, ON K2H 5A8  
 (613) 722-5148

**SURVEYOR:** ANNIS O'SULLIVAN VOLLEBECK LTD.  
 14 CONCOURSE GATE, SUITE 500  
 NEPEAN, ON K2E 7S6  
 (613) 727-0850

12.					
11.					
10.					
9.					
8.					
7.					
6.					
5.					
4.					
3.					
2.	10/08/20	FOR RESUBMISSION	MB		
1.	18/11/19	FOR SITE PLAN SUBMISSION	MB		
No.	DATE	DESCRIPTION	INT.	DATE	DESCRIPTION

SEAL

24.					
23.					
22.					
21.					
20.					
19.					
18.					
17.					
16.					
15.					
14.					
13.					
No.	DATE	DESCRIPTION	INT.	DATE	DESCRIPTION

A - DETAIL NUMBER  
 B - SHEET NUMBER (DETAIL REQUIRED)  
 C - SHEET NUMBER (DETAIL LOCATION)

**PROJECT:** PATHWAYS | BLOCK 232  
 PLANNED UNIT DEVELOPMENT  
 1055 CEDAR CREEK DRIVE  
 OTTAWA, ONTARIO

**CURT:** PHOENIX HOMES  
 18A Bentley Ave Ottawa, ON K2E 6T8

**DRAWING TITLE:** ACCESSORY BUILDING ELEVATIONS

**DATE:** NOV. 2019

**SCALE:** 1 : 100

**SHEET NO. REV NO.:** A8

**DRAWN BY:** mdb

**CHECKED:** MDB

D07-12-20-0037