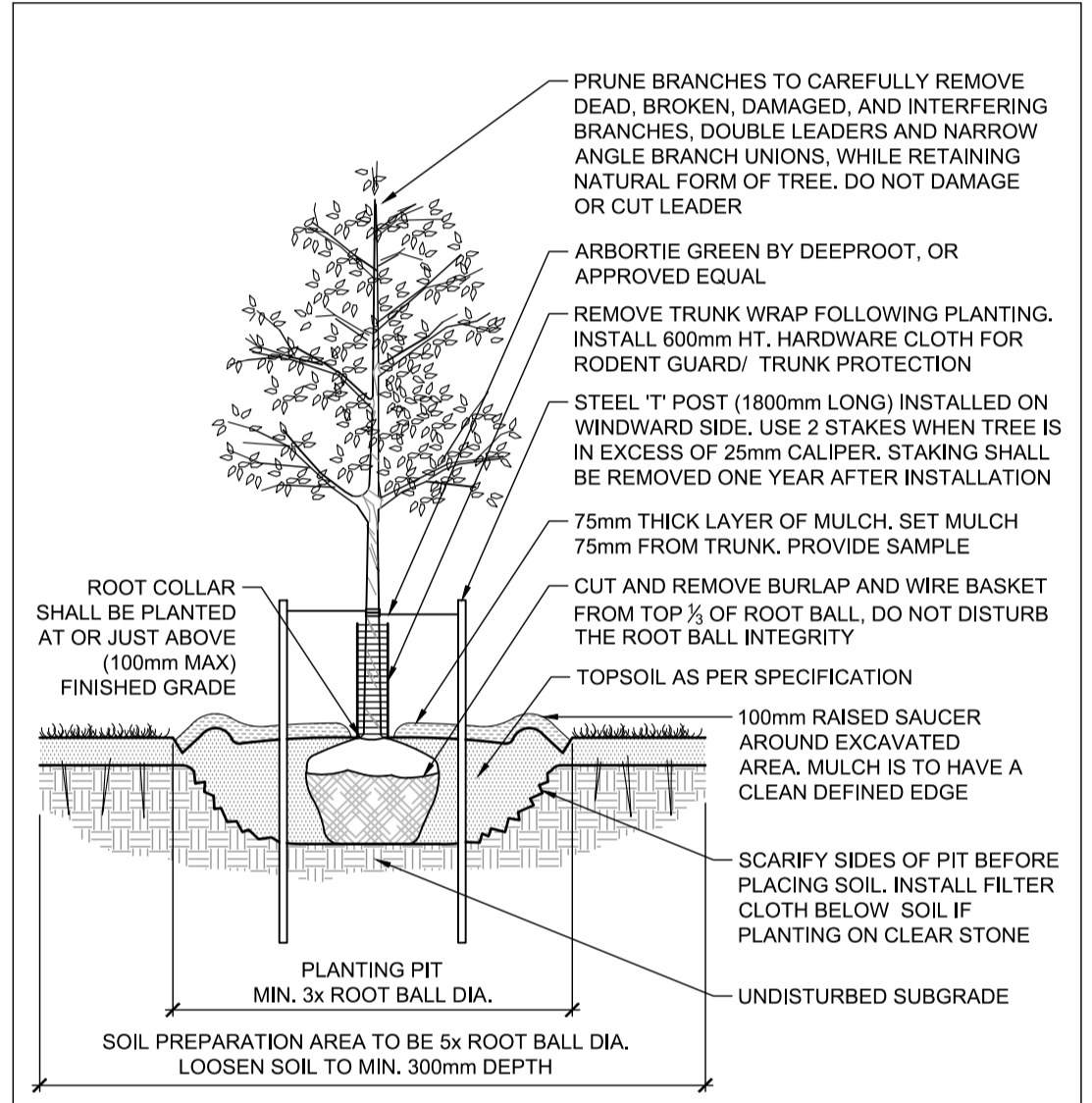
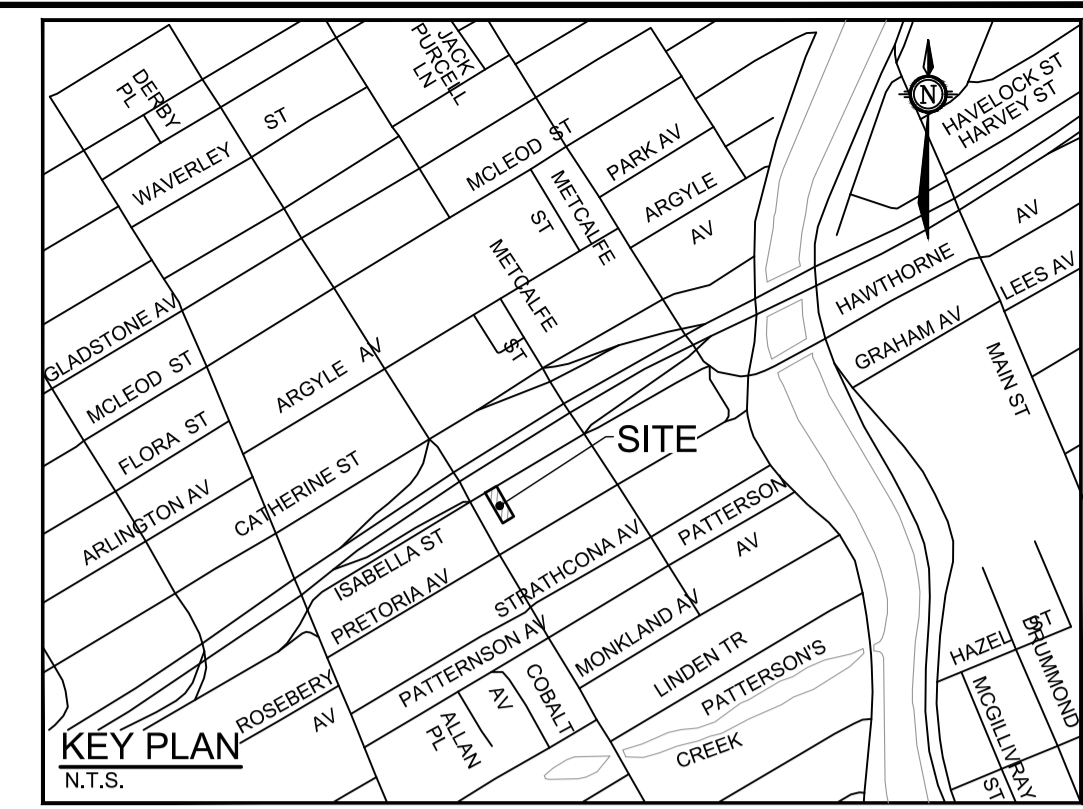
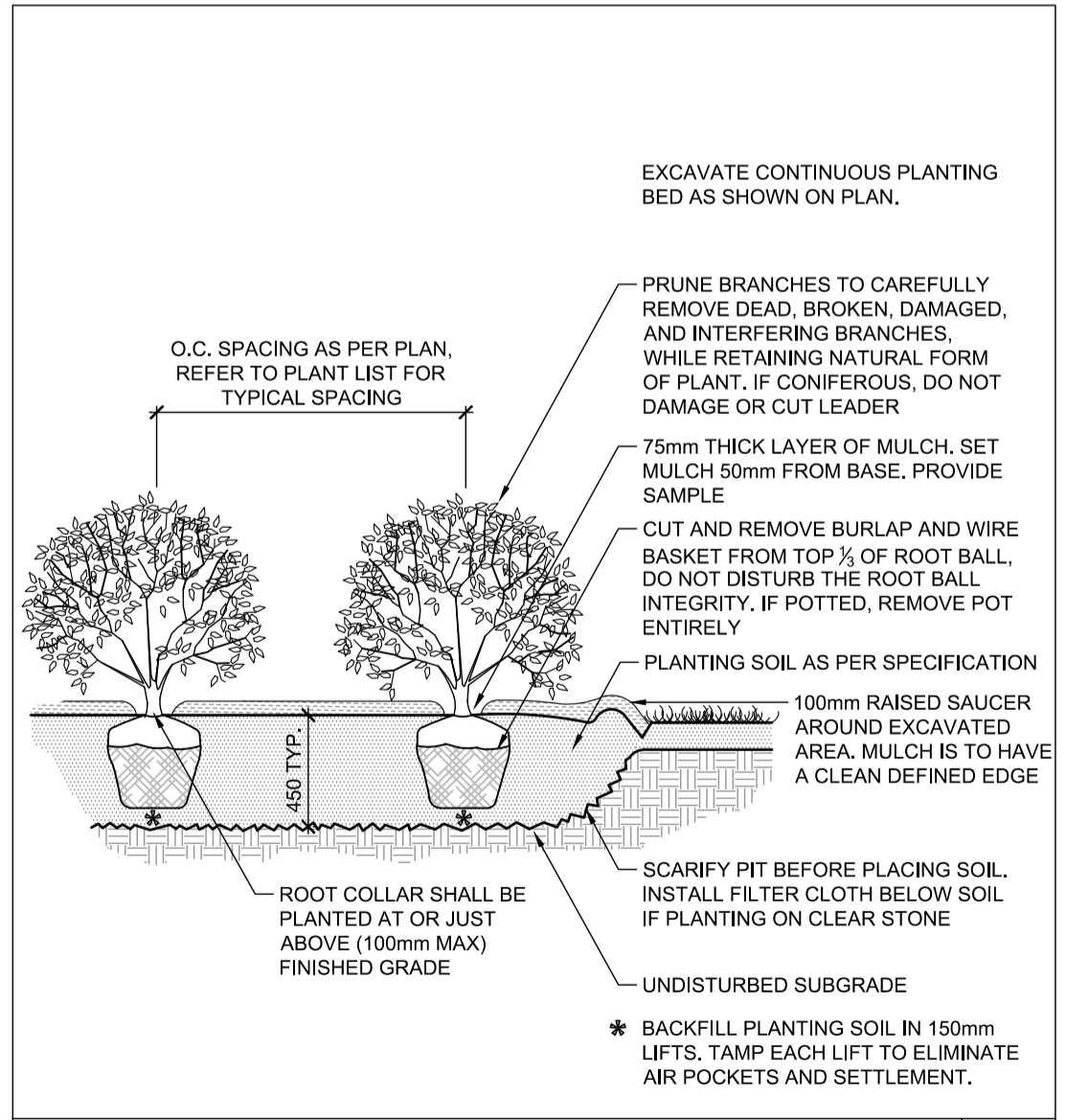

DOUGLAS JAMES, MCIP, RPP
 MANAGER, DEVELOPMENT REVIEW - CENTRAL
 PLANNING, INFRASTRUCTURE & ECONOMIC
 DEVELOPMENT DEPARTMENT, CITY OF OTTAWA

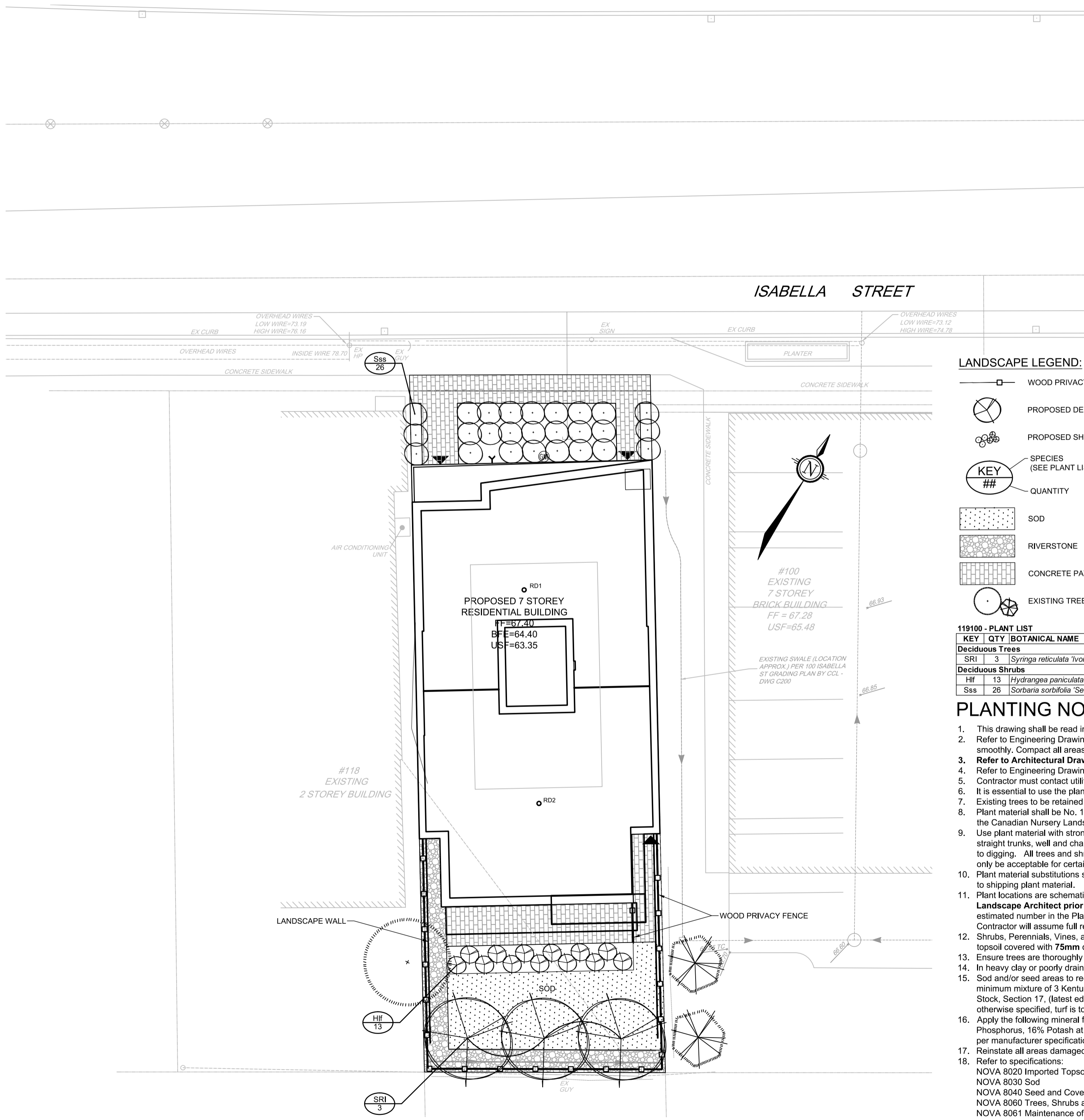
APPROVED
 By Jamesdo at 4:08 pm, May 03, 2021



STANDARD DECIDUOUS TREE PLANTING D1



SHRUB AND PERENNIAL PLANTING D2



LANDSCAPE LEGEND:

- WOOD PRIVACY FENCE
- PROPOSED DECIDUOUS TREE
- PROPOSED SHRUBS
- SPECIES (SEE PLANT LIST)
- QUANTITY
- SOD
- RIVERSTONE
- CONCRETE PAVERS
- EXISTING TREE TO REMAIN

119100 - PLANT LIST

KEY	QTY	BOTANICAL NAME	COMMON NAME	SIZE	COND.	SPACING
Deciduous Trees						
SRI	3	<i>Syringa reticulata</i> 'Ivory Silk'	Ivory Silk Japanese Tree Lilac	Multistem	WB	As Shown
Deciduous Shrubs						
Hif	13	<i>Hydrangea paniculata</i> 'SMHPLQF'	Little Quick Fire Hydrangea	45cm HT	PT	As Shown
Sss	26	<i>Sorbaria sorbifolia</i> 'Sem'	Sem False Spirea	45cm HT	PT	As Shown

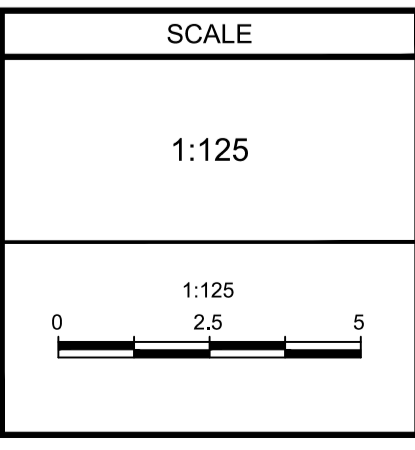
PLANTING NOTES

- This drawing shall be read in conjunction with all relevant Architectural, Engineering, and related drawings and documents.
- Refer to Engineering Drawings for Grading. Provide drainage as indicated in grading plan. Round all tops and toes of slopes, smoothly. Compact all areas to 95% Standard Proctor Density unless otherwise noted.
- Refer to Architectural Drawings for site layout.
- Refer to Engineering Drawings for site servicing.
- Contractor must contact utility companies for locates prior to excavation or planting.
- It is essential to use the plans and details in conjunction with the specifications and notes.
- Existing trees to be retained shall be protected according to the contract detail and specifications.
- Plant material shall be No. 1 Grade and shall comply with Canadian Standards for Nursery Stock (latest edition) published by the Canadian Nursery Landscape Association.
- Use plant material with strong fibrous root system free of disease, defects or injuries, and structurally sound. Use trees with straight trunks, well and characteristically branched for species. Obtain approval from consultant of plant material at source prior to digging. All trees and shrubs shall be container grown, potted, W/B or B/B, as indicated on Plant List. Bare root planting will only be acceptable for certain species and as approved by the Landscape Architect.
- Plant material substitutions shall not be permitted without the written approval from the consultant, with 48 hours notice, prior to shipping plant material.
- Plant locations are schematic / approximate only. Contractor shall stake out locations on site for approval by the Landscape Architect prior to installation. The illustrated number of plants shown in the Planting Plan supersedes the estimated number in the Plant List. Contractor to report any discrepancies to the Landscape Architect prior to installation. Contractor will assume full responsibility if the Landscape Architect is not notified.
- Shrubs, Perennials, Vines, and Groundcovers shall be planted in a continuous planting bed of 450mm depth with approved topsoil covered with 75mm depth shredded bark mulch.
- Ensure trees are thoroughly watered following planting. Monitor material and ensure adequate moisture until acceptance.
- In heavy clay or poorly drained soils, set root ball with root collar 75-100mm higher than finished grade.
- Sod and/or seed areas to receive 100mm depth topsoil as specified. Sod shall be No. 1 Kentucky Bluegrass Sod grown from minimum mixture of 3 Kentucky Bluegrass cultivars. Quality and source shall comply with Canadian Standards for Nursery Stock, Section 17, (latest edition) published by the Canadian Nursery Landscape Association. Unless otherwise specified, turf is to be maintained by the contractor until a second cutting is accepted by the Landscape Architect.
- Apply the following mineral fertilizer unless soil tests show other requirements: Sodded areas - (8-32-16) 8% Nitrogen, 32% Phosphorus, 16% Potash at a rate of 350kg/ha. - Planting Beds - (8-32-16) - 8% Nitrogen, 32% Phosphorus, 16% Potash as per manufacturer specifications.
- Reinstate all areas damaged or disturbed beyond the Limit of Work.
- Refer to specifications:
 - NOVA 8020 Imported Topsoil
 - NOVA 8030 Sod
 - NOVA 8040 Seed and Cover (Hydraulic Seeding)
 - NOVA 8060 Trees, Shrubs and Groundcover Planting
 - NOVA 8061 Maintenance of Planting

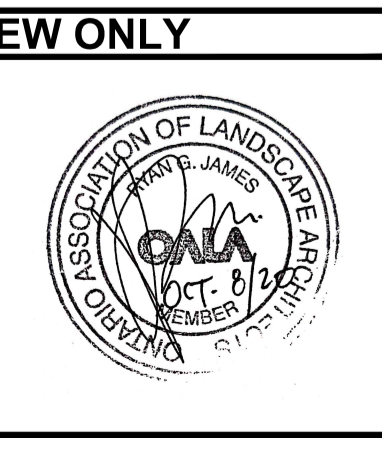
NOTE:
 THE POSITION OF ALL POLE LINES, CONDUITS, WATERMANS, SEWERS AND OTHER UNDERGROUND AND OVERGROUND UTILITIES AND STRUCTURES IS NOT NECESSARILY SHOWN ON THE CONTRACT DRAWINGS, AND WHERE SHOWN, THE ACCURACY OF THE POSITION OF SUCH UTILITIES AND STRUCTURES IS NOT GUARANTEED. BEFORE STARTING WORK, DETERMINE THE EXACT LOCATION OF ALL SUCH UTILITIES AND STRUCTURES AND ASSUME ALL LIABILITY FOR DAMAGE TO THEM.

NOT FOR CONSTRUCTION

No.	REVISION	DATE	BY
3.	REVISED PER CITY COMMENTS	OCT 8/20	RGJ
2.	ISSUED FOR SITE PLAN CONTROL	APR 9 /20	RGJ
1.	ISSUED FOR COORDINATION	APR 7 /20	RGJ



DESIGN	MEL/RGJ
CHECKED	RGJ
DRAWN	MEL
CHECKED	RGJ
APPROVED	RGJ



NOVATECH
 Engineers, Planners & Landscape Architects
 Suite 200, 240 Michael Cowpland Drive
 Ottawa, Ontario, Canada K2M 1P6
 Telephone: (613) 254-9643
 Facsimile: (613) 254-5867
 Website: www.novatech-eng.com

LOCATION CITY OF OTTAWA 114 ISABELLA STREET	PROJECT No. 119100
DRAWING NAME LANDSCAPE PLAN	REV #3 REV #3
	DRAWING No. 119100-L1

M:\2019\119100\CADD\Landscaping\119100-L.dwg, L1, Oct 14, 2020, 8:55am, kvatison

D07-12-14-0009