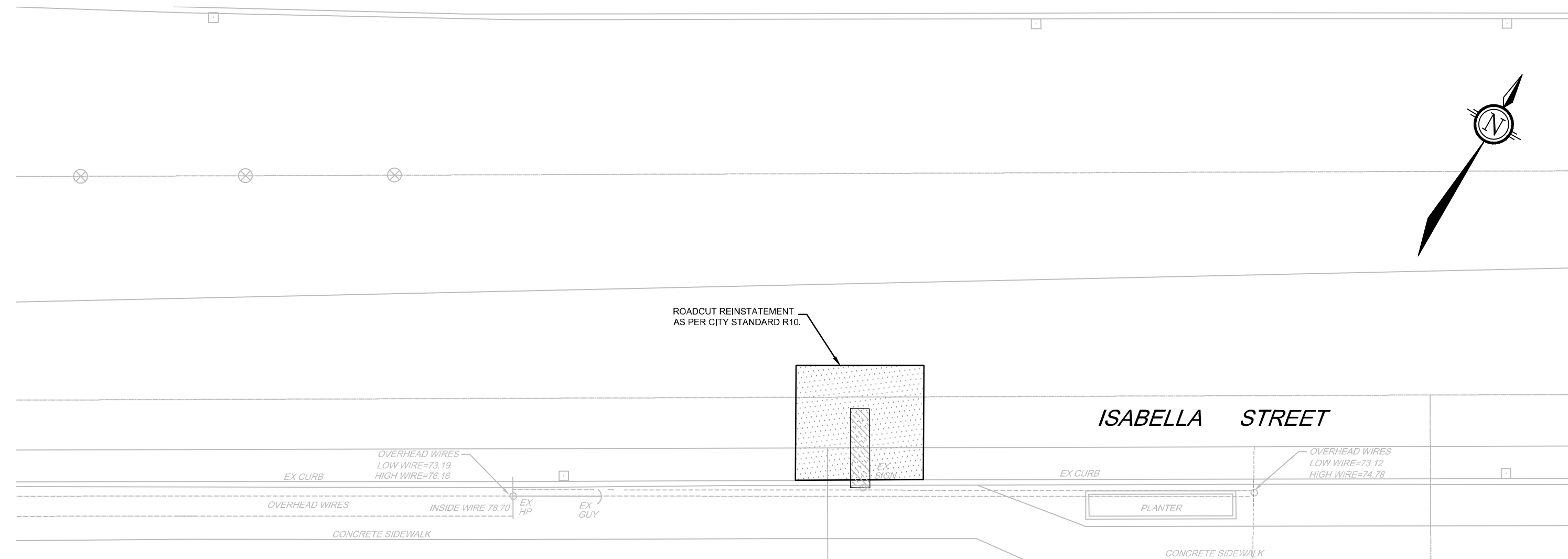


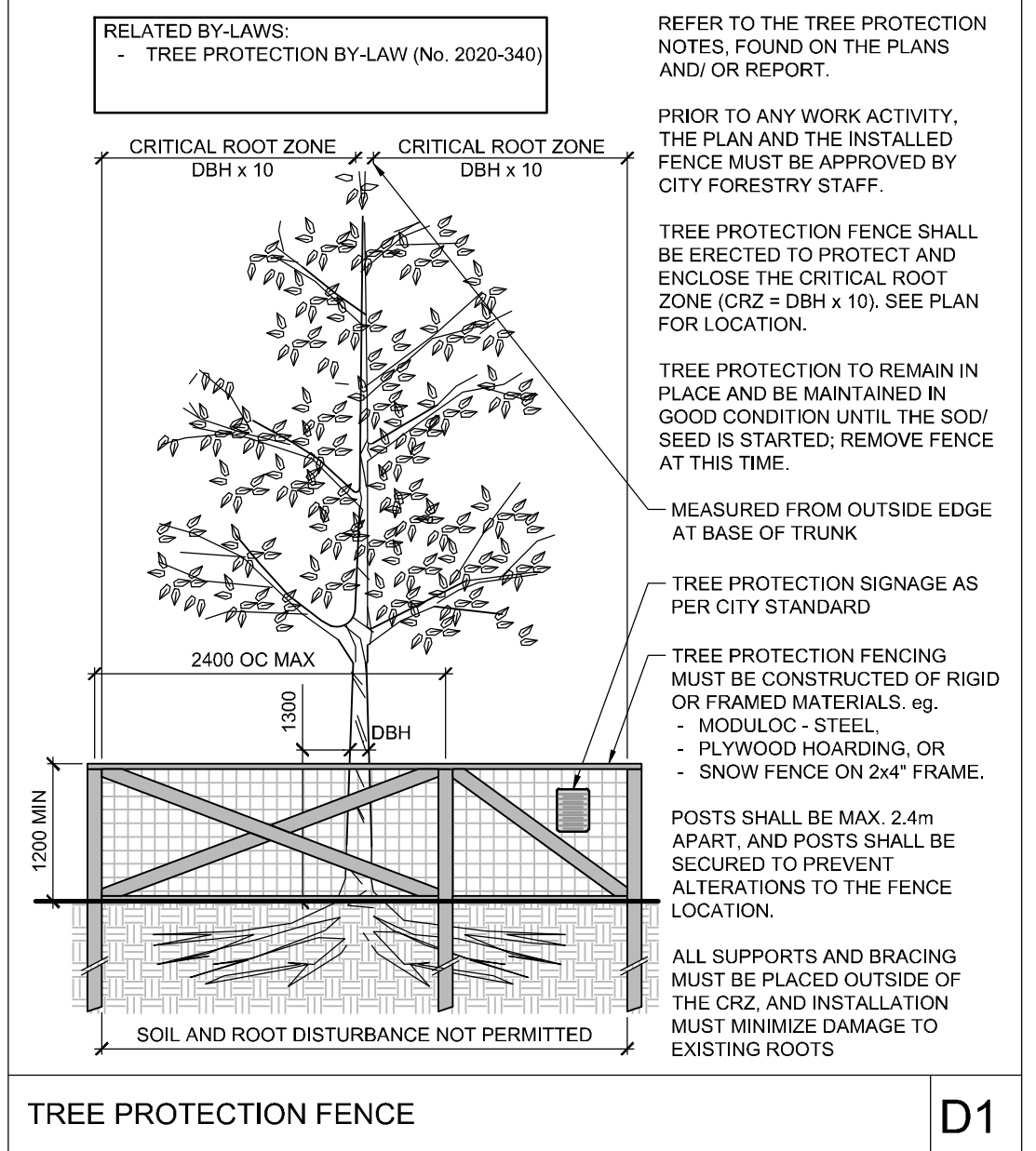
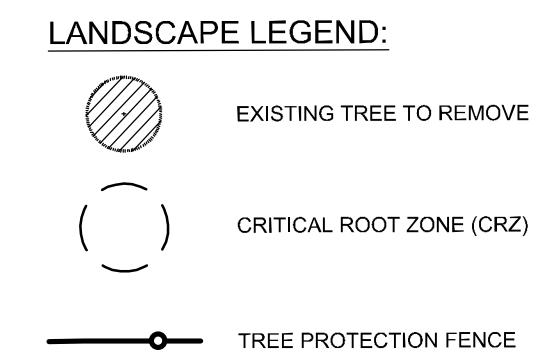
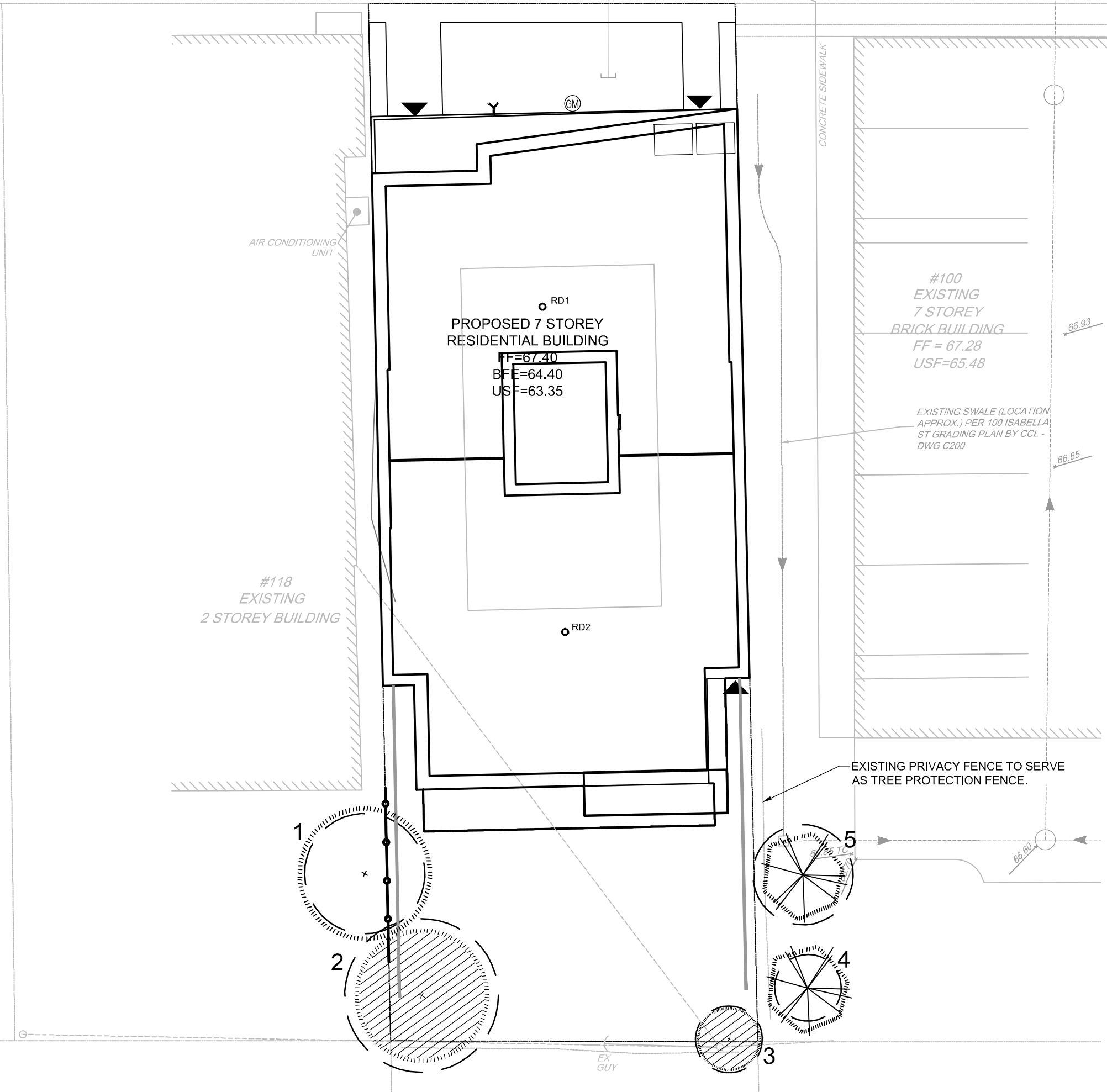
**TREE PROTECTION NOTES**

- The following protection measures must be implemented for retained trees, both on site and on adjacent sites, prior to any work activity, including tree removal. Tree protection fence shall remain in place and be maintained in good condition for the duration of site works:
- The location of the tree protection fencing must be determined by an arborist and detailed on any associated plans for the site (e.g. tree conservation report, tree disclosure report, etc.).
  - Under the guidance of a Landscape Architect or Certified Arborist, erect a fence at the critical root zone (CRZ) of trees. Diameter at breast height (DBH) is the trunk diameter measured at 1.3m height on the tree trunk. The CRZ is calculated as DBH x 10. Refer to the Tree Protection Fence detail.
  - Refer to the Tree Protection Plan for fence location. Both the plan and the installed fence must be approved by City Forestry Staff prior to work commencement.
  - Do not place any material or equipment within 2m of the CRZ of any tree; including outhouses.
  - Do not attach any signs, notices or posters to any tree.
  - Do not disturb, raise or lower the existing grade within the CRZ without approval.
  - Only tunnel or bore when digging within the CRZ of a tree. Hand work only where required within the CRZ, absolutely no machinery permitted.
  - Do not damage the root system, trunk or branches, or any tree.
  - Do not extend hard surface or significantly change landscaping.
  - Ensure that exhaust fumes from all equipment are directed away from any tree canopy.
  - When trees to be removed overlap with the CRZ of trees to be preserved: cut roots at the edge of the CRZ and grind down stumps after tree removals, do not pull out stumps. Ensure there is no root pulling or disturbance of the ground within the CRZ.
  - If roots must be cut, the Landscape Architect and City Forestry Staff must be notified and consulted prior to work taking place. Roots 20mm or larger should be cut at right angles with clean, sharp horticultural tools without tearing, crushing, or pulling. Refer to City of Ottawa Specification S.P. F-8011 Tree Protection, Excavation of Root Zone.
  - If there appears to be damaged or objectionable branches, the Landscape Architect must be consulted before any work is conducted. Do not prune leaders. Do not prune more than 1/4 of crown.
  - If trees are being affected by site works, a water and fertilizing program will need to be set up to the satisfaction of the Landscape Architect.
  - If the protected fence area must be reduced to facilitate construction, mitigation measures must be prescribed by the Landscape Architect and approved by City Forestry Staff. These may include the placement of plywood, wood chips, or steel plating over the roots for protection.
  - By-laws: All City-owned trees are protected under the Municipal Trees and Natural Areas Protection By-Law (2006-279). Within the urban area, privately-owned trees greater than 50cm diameter on lots 1ha in size or less, and trees greater than 10cm diameter on lots less than 1 ha are protected under the Urban Tree Conservation By-Law (2009-200).



*[Signature]*  
**DOUGLAS JAMES, MCIP, RPP**  
 MANAGER, DEVELOPMENT REVIEW - CENTRAL  
 PLANNING, INFRASTRUCTURE & ECONOMIC  
 DEVELOPMENT DEPARTMENT, CITY OF OTTAWA

**APPROVED**  
 By Jamesdo at 4:14 pm, May 03, 2021



**TREE INVENTORY**

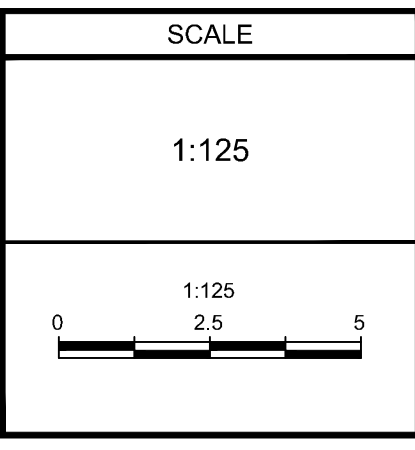
No.	Botanical Name	Common Name	DBH (m)	CRZ (m)	Condition	Owner	Remarks	Recomm.
1	<i>Acer negundo</i>	Manitoba Maple	0.18	1.80	Poor	118 Isabella	Dead limbs, entwined with fence	PROTECT
2	<i>Fraxinus</i>	Ash	0.23	2.30	Dead	114 Isabella	Evidence of Emeralds Ash Borer	Remove
3	<i>Acer negundo</i>	Manitoba Maple	0.10	1.00	Fair	114 Isabella		Remove
4	<i>Picea pungens var. glauca</i>	Colorado Blue Spruce	0.10	1.00	Fair	100 Isabella		PROTECT
5	<i>Picea pungens var. glauca</i>	Colorado Blue Spruce	0.15	1.50	Good	100 Isabella		PROTECT

NOTE:  
 TREES INVENTORIED ON MARCH 27, 2020.  
 LOCATION OF TREES IS APPROXIMATE.

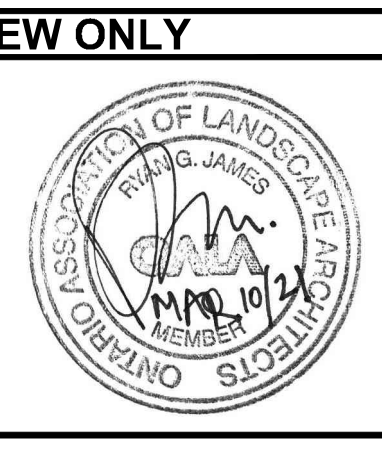
NOTE:  
 THE POSITION OF ALL POLE LINES, CONDUITS, WATERMANS, SEWERS AND OTHER UNDERGROUND AND OVERGROUND UTILITIES AND STRUCTURES IS NOT NECESSARILY SHOWN ON THE CONTRACT DRAWINGS, AND WHERE SHOWN, THE ACCURACY OF THE POSITION OF SUCH UTILITIES AND STRUCTURES IS NOT GUARANTEED, BEFORE STARTING WORK, DETERMINE THE EXACT LOCATION OF ALL SUCH UTILITIES AND STRUCTURES AND ASSUME ALL LIABILITY FOR DAMAGE TO THEM.

**NOT FOR CONSTRUCTION**

No.	REVISION	DATE	BY
3.	CORRECT DRAWING No.	MAR 10/21	RGJ
2.	ISSUED FOR SITE PLAN CONTROL	APR 9/20	RGJ
1.	ISSUED FOR COORDINATION	APR 7/20	RGJ



DESIGN	MEL/RGJ
CHECKED	RGJ
DRAWN	MEL
CHECKED	RGJ
APPROVED	RGJ



**NOVATECH**  
 Engineers, Planners & Landscape Architects  
 Suite 200, 240 Michael Cowpland Drive  
 Ottawa, Ontario, Canada K2M 1P6  
 Telephone: (613) 254-9643  
 Facsimile: (613) 254-5867  
 Website: www.novatech-eng.com

LOCATION CITY OF OTTAWA 114 ISABELLA STREET	
DRAWING NAME	TREE CONSERVATION PLAN
PROJECT No.	119100
REV	REV # 3
DRAWING No.	119100-TCR

M:\2019\119100\CAD\Landscapes\119100-4.dwg, TCR, Mar 10, 2021 - 3:33pm, mlsat

D07-12-14-0009