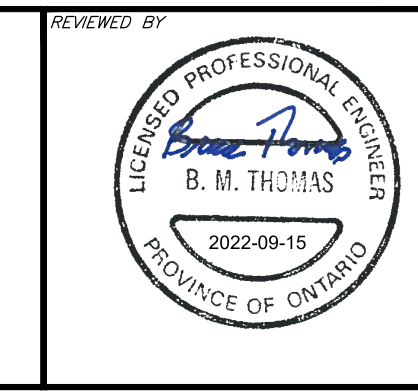
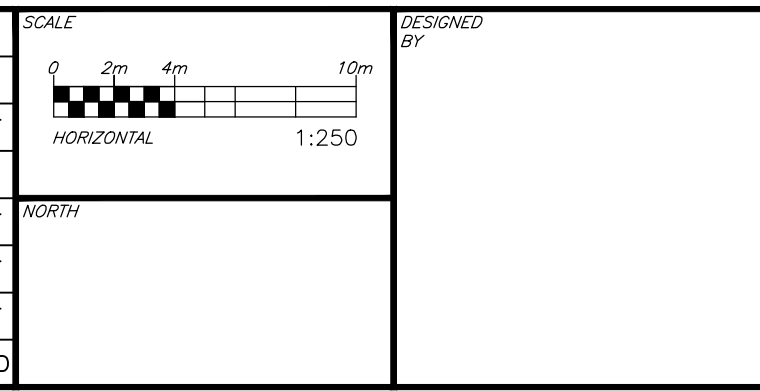


**CAUTION**  
 THE POSITION OF ALL POLE LINES, CONDUITS, WATERMANS, SEWERS AND OTHER UNDERGROUND AND OVERGROUND UTILITIES AND STRUCTURES IS NOT NECESSARILY SHOWN ON THE CONTRACT DRAWINGS, AND WHERE SHOWN, THE ACCURACY OF THE POSITION OF SUCH UTILITIES AND STRUCTURES IS NOT GUARANTEED. BEFORE STARTING WORK, DETERMINE THE EXACT LOCATION OF ALL SUCH UTILITIES AND STRUCTURES AND ASSUME ALL LIABILITY FOR DAMAGE TO THEM.

REV	REVISION DESCRIPTION	DATE	BY	APPD
5	REVISED PER CITY COMMENTS	09/15/22	AC	BMT
4	REVISED PER CITY COMMENTS	10/12/21	AC	JD
3	REVISED PER CITY COMMENTS	27/05/21	AC	BMT
2	ISSUED FOR REZONING APPLICATION	27/01/20	MZG	BMT
1	ISSUED FOR REVIEW	12/09/19	SAB	BMT



**CLIENT**  
 11061917 CANADA INCORPORATED  
 100-768 ST. JOSEPH BOULEVARD  
 GATINEAU, QC. J8Y 4B8

**exp.**  
 exp Services Inc.  
 1-813-688-1899 | 1-613-225-7330  
 3025 Deschênes Drive, Unit 100  
 Ottawa, ON K2B 8H6  
 Canada  
 www.exp.com

• BUILDINGS • EARTH & ENVIRONMENT • ENERGY •  
 • INDUSTRIAL • INFRASTRUCTURE • SUSTAINABILITY •

PROJECT	11061917 CANADA INC RESIDENTIAL DEVELOPMENT 365 FOREST STREET OTTAWA, ONTARIO.
PROJECT No.	OTT-252570-A0
SURVEY	ADV
DATE	JAN 2020
TITLE	POST-DEVELOPMENT CATCHMENTS
C400	