

ROOF PONDING	
AREA DRAIN #	100 YEAR PONDING DEPTH (mm)
R-A1	125
R-A2	120
R-A3	115
R-A4	109
R-A5	119
R-A6	119
R-B1	123
R-B2	125
R-B3	127
R-B4	127
R-B5	113
R-B6	114

STRUCTURE TABLE									
STRUCTURE NUMBER	TYPE	LID ELEV (m)	INVERT IN (m) and DIA (mm)	INVERT OUT (m) and DIA (mm)	SIZE	REFERENCE	FRAME	COVER	Comment
STMMH 100	STORM	74.01	72.28 N (250) 72.23 W (300)	72.22 E (300)	1200 DIA	OPSD 701.010	Ottawa S25	Ottawa S24.1	
STMMH 101	STORM	74.69	72.44 NW (250)	72.38 S (250)	1200 DIA	OPSD 701.010	Ottawa S25	Ottawa S24.1	
STMMH 102	STORM	74.91	72.94 E (250)	72.91 W (250)	1200 DIA	OPSD 701.010	Ottawa S25	Ottawa S24.1	
SANMH 200	SANITARY	75.20	72.22 N (250) 72.19 E (250)	72.16 W (250)	1200 DIA	OPSD 701.010	Ottawa S25	Ottawa S24	
SANMH 201	SANITARY	75.04	71.92 N (250) 71.97 E (250)	71.91 S (250)	1200 DIA	OPSD 701.010	Ottawa S25	Ottawa S24	

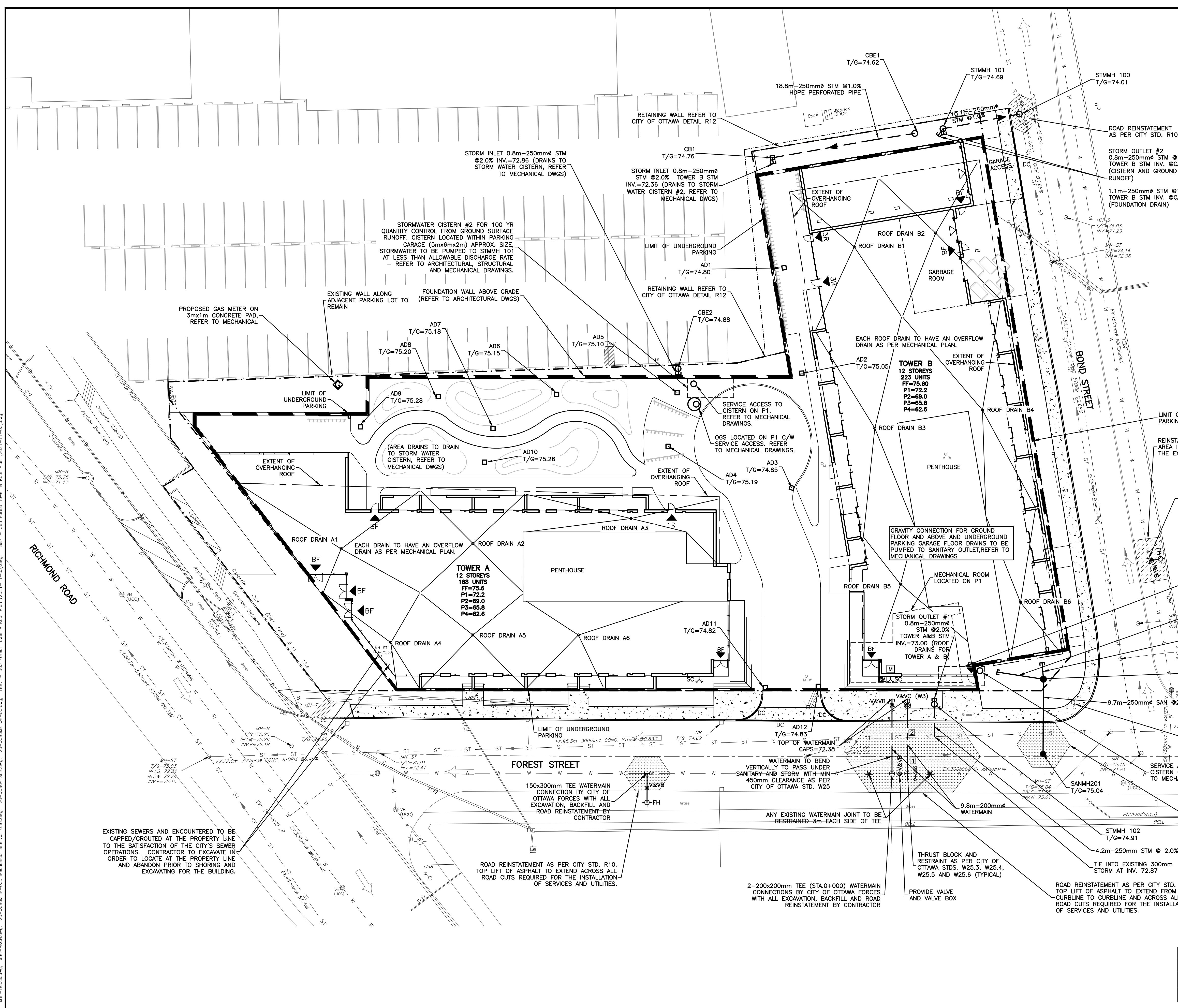
SEWER TABLE									
STRUCTURE	TYPE	INVERT ELEV (m)	DIAM (mm)	LENGTH (m)	Type	Class	Comment		
CISTERN	STMMH 102	STORM	73.000	72.980	250	0.8	PVC SDR35 50mm insulation required		
STMMH 102	CITY STORM	STORM	72.950	72.870	250	4.2	PVC SDR35 50mm insulation required		
TOWER B	STMMH 101	STORM	72.450	72.440	250	0.9	PVC SDR35		
STMMH 101	STMMH 100	STORM	72.380	72.280	250	10.1	PVC SDR35		
TOWER A	SANMH 200	SANITARY	72.340	72.220	250	6.1	PVC SDR35		
TOWER B	SANMH 200	SANITARY	72.240	72.220	250	1.0	PVC SDR35		
SANMH 200	SANMH 201	SANITARY	72.160	71.970	250	9.7	PVC SDR35		

WATERMAIN TABLE				
STATION	DESCRIPTION	GROUND ELEVATION (m)	TOP OF WATERMAIN, ELEV (m)	AS-BUILT (m)
0+000	200x300 TEE	74.70	72.8±	
	200x300 TEE	74.70	72.8±	
0+000.8	200 VALVE & VALVE BOX	74.70	72.8±	
0+002.0	45° VERTICAL BEND	74.72	72.80	
0+002.0	45° VERTICAL BEND	74.75	71.73	
0+002.3	CROSSING SANITARY SEWER	74.76	71.73	
0+002.5	45° VERTICAL BEND	74.76	71.73	
0+003.0	45° VERTICAL BEND	74.76	72.17	
0+004.4	CROSSING STORM SEWER	74.76	72.34	
0+009	200 VALVE AND VALVE BOX	74.87	72.38	
0+009.8	200 VALVE AND VALVE CHAMBER (W3)	74.87	72.38	
	CAP - FROM BUILDING	74.92	72.38	

WATERMAIN / SEWER CROSSING TABLE									
LOCATION	FINISHED GRADE (m)	SANITARY SEWER		STORM SEWER		WATERMAIN		CLEARANCES (mm)	
		INV ELEV (m)	DIA (mm)	OBV ELEV (m)	DIA (mm)	INV ELEV (m)	DIA (mm)	OBV ELEV (m)	
1	74.89	72.03	250	72.28		71.53	200	71.73	500 (WATER SERVICE BELOW SEWER AS PER CITY STD. W25)
2	74.80			72.84	300	73.14	200	72.34	500 (WATER SERVICE BELOW SEWER AS PER CITY STD. W25)

STORM CATCHBASIN STRUCTURE TABLE					
CB#	TOP OF GRATE ELV.	INVERTS	REFERENCE	FRAME	COVER
CB1	74.76	SE=72.44 (250mm)	OPSD 705.010	S19	S19
CBE1	74.62	NW=72.62 (250mm)	S31	S31	S31
CBE2	74.88	W=72.88 (250mm)	S31	S31	S31

STORM WATER MANAGEMENT SUMMARY TABLE							
CONTROL LOCATION	POST DEVELOPMENT DRAINAGE NUMBER	MAX FLOW (L/sec)	MAX HEAD (m)	TYPE	NUMBER OF DRAINS	MANUFACTURER	MODEL
TOWER A ROOF	PST-1 (R-A1 - R-A6)	9.2 L/sec	0.15	FLOW CONTROLLED ROOF DRAIN	6	WATTS	ACUTROL ADJUSTABLE 1 WEIR PER DRAIN SET @25% POSITION
TOWER B ROOF	PST-3 (R-B1 - R-B6)	8.5 L/sec	0.15	FLOW CONTROLLED ROOF DRAIN	6	WATTS	ACUTROL ADJUSTABLE 1 WEIR PER DRAIN SET @25% POSITION



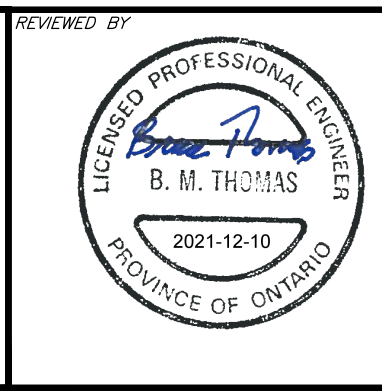
CAUTION
THE POSITION OF ALL POLE LINES, CONDUITS, WATERMANS, SEWERS AND OTHER UNDERGROUND AND OVERGROUND UTILITIES AND STRUCTURES IS NOT NECESSARILY SHOWN ON THE CONTRACT DRAWINGS, AND WHERE SHOWN, THE ACCURACY OF THE POSITION OF SUCH UTILITIES AND STRUCTURES IS NOT GUARANTEED. BEFORE STARTING WORK, DETERMINE THE EXACT LOCATION OF ALL SUCH UTILITIES AND STRUCTURES AND ASSUME ALL LIABILITY FOR DAMAGE TO THEM.

REV	REVISION DESCRIPTION	DATE	BY	APPD
4	REVISED PER CITY COMMENTS	10/12/21	AC	JD
3	REVISED PER CITY COMMENTS	27/05/21	AC	BMT
2	ISSUED FOR REZONING APPLICATION	27/01/20	MZG	BMT
1	ISSUED FOR REVIEW	12/09/19	SAB	BMT

REV	REVISION DESCRIPTION	DATE	BY	APPD
4	REVISED PER CITY COMMENTS	10/12/21	AC	JD
3	REVISED PER CITY COMMENTS	27/05/21	AC	BMT
2	ISSUED FOR REZONING APPLICATION	27/01/20	MZG	BMT
1	ISSUED FOR REVIEW	12/09/19	SAB	BMT

SCALE: 1:250

 DESIGNED BY: B. M. THOMAS
 CHECKED BY: B. M. THOMAS
 REVIEWED BY: B. M. THOMAS
 DATE: 2021-12-10



11061917 CANADA INCORPORATED
 100-768 ST. JOSEPH BOULEVARD
 GATINEAU, QC. J8Y 4B8

exp. Inc.
 1-813-888-1888 | 1-813-225-7330
 200 Wellington Drive, Unit 100
 Ottawa, ON K2B 6H6
 Canada
 www.exp.com

PROJECT: 11061917 CANADA INC RESIDENTIAL DEVELOPMENT 365 FOREST STREET OTTAWA, ONTARIO.
 DRAWING NO: C100
 DATE: JAN 2020
 PROJECT MANAGER: BMT
 APPROVED: BMT