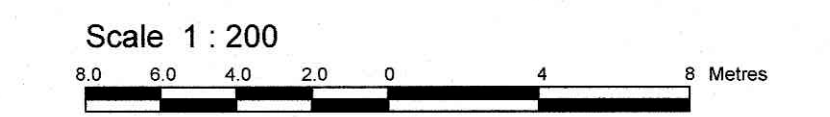


TOPOGRAPHICAL PLAN OF SURVEY OF  
**LOT 41,  
 PART OF LOTS 42, 56 and 57**  
**REGISTERED PLAN 311**  
**CITY OF OTTAWA**  
 Surveyed by Annis, O'Sullivan, Vollebakk Ltd.



Metric  
 DISTANCES SHOWN ON THIS PLAN ARE IN METRES AND  
 CAN BE CONVERTED TO FEET BY DIVIDING BY 0.3048

Surveyor's Certificate  
 I CERTIFY THAT:  
 1. This survey and plan are correct and in accordance with the Survey Act and the Regulations made under them.  
 2. The survey was completed on the 20th day of October, 2021.  
 Date: Oct 22/21  
 T. Hartwick  
 Ontario Land Surveyor

Notes & Legend

Symbol	Denotes
—	Survey Monument Planted
—	Survey Monument Found
SIB	Standard Iron Bar
SSIB	Short Standard Iron Bar
B	Iron Bar
CC	Cut Cross
SB	Iron Bar
SSIB*	0.3m Short Standard Iron Bar
(WIT)	Witness
Meas.	Measured
(AOG)	Annis, O'Sullivan, Vollebakk Ltd.
(P1)	Registered Plan 311
(P2)	(857) Plan September 20, 2002
(P3)	(AOG) Plan September 17, 1986
(P4)	Plan SR-10159
(P5)	Plan 4R-515
(P6)	(1473) Plan July 14, 2003
(P7)	Plan SR-6510
(P8)	(JOB) Plan June 9, 1978
(P9)	(857) Plan September 20, 2002
(P10)	(AOG) Plan April 12, 2019
(N1)	(AOG) Field Notes September 15, 1986
(DI)	Instrument No. N574853
○ M+ST	Maintenance Hole (Storm Sewer)
○ M+S	Maintenance Hole (Sanitary)
○ M+B	Maintenance Hole (Bell)
MHT	Maintenance Hole (Traffic)
— OHW	Overhead Wires
□ CB	Catch Basin
⊠	Gas Meter
— G	Underground Gas as marked on Ground by others
— B	Underground Bell as marked on Ground by others
— P	Underground Hydro as marked on Ground by others
—	Board Fence
UP	Utility Pole
• AN	Anchor
○ LS	Light Standard
⊙	Diameter
+6.00	Location of Elevations
+6.07	Top of Curb / Planter Elevation
—	Property Line
—	Top of Grate
T/G	Wooden Retaining Wall
WRW	Wooden Retaining Wall
○	Deciduous Tree
⊙	Coniferous Tree
○ M+W	Monitoring Well
DC	Depressed Curb
⊙ VC	Valve Chamber (Watermain)

ELEVATION NOTES  
 1. Elevations shown are geoidetic and are referred to the CGVD28 geoidetic datum.  
 2. It is the responsibility of the user of this information to verify that the job benchmark has not been altered or disturbed and that its relative elevation and description agrees with the information shown on this drawing.

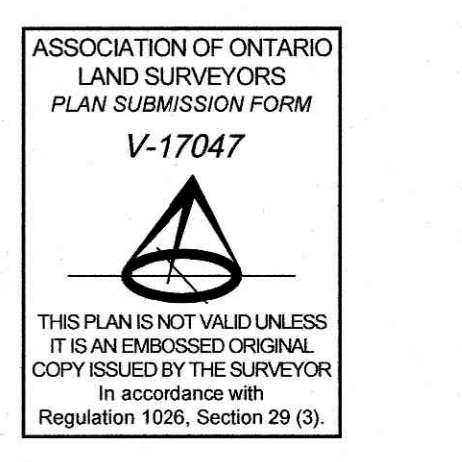
UTILITY NOTES  
 1. This drawing cannot be accepted as acknowledging all of the utilities and it will be the responsibility of the user to contact the respective utility authorities for confirmation.  
 2. Only visible surface utilities were located.  
 3. A field location of underground plant by the pertinent utility authority is mandatory before any work involving breaking ground, probing, excavating etc.

Topographic data was collected under Winter Conditions.  
 Snow cover and ice preclude determining location and elevation of some topographical data that is otherwise visible.

Bearings are grid. Derived from Can-Net 2016 Real Time Network GPS observations and are referred to the Central Meridian of MTM Zone 9 (79°30' West Longitude) NAD-83 (original).

For comparison purposes, bearings shown on Plans P2, P3, P5 and P6 are astronomic bearings.

SITE AREA = 5433.2 m<sup>2</sup>



© Annis, O'Sullivan, Vollebakk Ltd. 2021. THIS PLAN IS PROTECTED BY COPYRIGHT.  
**ANNIS, O'SULLIVAN, VOLLEBEKK LTD.**  
 14 Concourse Centre, Suite 500  
 Nepean, Ont. K2E 7S6  
 Phone: (613) 727-8850 / Fax: (613) 727-1079  
 Email: info@anniso.com