

A1 A2 A3 A4 A5 A6 A7 A8 A9 A10

**STATISTICS OF THE % MATÉRIALS**  
 BUILDING AREA : 1741 m<sup>2</sup>  
 OPENING AREA : 800 m<sup>2</sup> (45.95%)  
 MASONRY : 413 m<sup>2</sup> (23.72%)  
 ALUMINIUM : 510 m<sup>2</sup> (29.29%)  
 OTHER : 18 m<sup>2</sup> (1.03%)

**APPROVED**  
 By Kersten Nitsche at 4:32 pm, Apr 18, 2024



**KERSTEN NITSCHÉ, MCIP RPP**  
 MANAGER (A), DEVELOPMENT REVIEW WEST  
 PLANNING, DEVELOPMENT AND BUILDING SERVICES  
 DEPARTMENT, CITY OF OTTAWA

Balcony noise barrier.  
 Typical on each floor



**TOWER A - FRONT ELEVATION (FOREST STREET)**

**GROUP HEAFEY**

365 Forest Street, 1420 Richmon Road and 2583-2589 Bond Street, Ottawa

1 : 200

D07-12-20-0041 1887-2303-19



Dessiné par : Tanya Nadeau  
 Conçu par : Christian Rheault

53 blvd Saint-Raymond, Suite 200-A  
 Gatineau, QC J8Y 1R8  
 www.lrarch.ca



REVISION 01	2020-12-18
REVISION 02	2022-08-29
REVISION 03	2022-12-09
REVISION 04	2023-08-03
REVISION 05	2023-10-18
REVISION 06	2023-12-06
REVISION 07	2024-01-18



**STATISTICS OF THE % MATERIALS**  
 BUILDING AREA : 2486 m<sup>2</sup>  
 OPENING AREA : 904 m<sup>2</sup> (36.36%)  
 MASONRY : 500 m<sup>2</sup> (20.11%)  
 ALUMINIUM : 1009 m<sup>2</sup> (40.59%)  
 OTHER : 73 m<sup>2</sup> (2.94%)

**APPROVED**  
 By Kersten Nitsche at 4:33 pm, Apr 18, 2024

*Kersten Nitsche*

**KERSTEN NITSCHÉ, MCIP RPP  
 MANAGER (A), DEVELOPMENT REVIEW WEST  
 PLANNING, DEVELOPMENT AND BUILDING SERVICES  
 DEPARTMENT, CITY OF OTTAWA**

**TOWER A - BACK ELEVATION**

**GROUP HEAFEY**



Dessiné par : Tanya Nadeau  
 Conçu par : Christian Rheault

53 blvd Saint-Raymond, Suite 200-A  
 Gatineau, QC J8Y 1R8  
 www.lrarch.ca



365 Forest Street, 1420 Richmon Road and 2583-2589 Bond Street, Ottawa

1 : 200

D07-12-20-0041 1887-2303-19

REVISION 01	2020-12-18
REVISION 02	2022-08-29
REVISION 03	2022-12-09
REVISION 04	2023-08-03
REVISION 05	2023-10-18
REVISION 06	2023-12-06
REVISION 07	2024-01-18

**STATISTICS OF THE % MATERIALS**  
 BUILDING AREA : 1305 m<sup>2</sup>  
 OPENING AREA : 450 m<sup>2</sup> (34.48%)  
 MASONRY : 51 m<sup>2</sup> (3.91%)  
 ALUMINIUM : 777 m<sup>2</sup> (59.54%)  
 OTHER : 27 m<sup>2</sup> (2.07%)

**APPROVED**  
 By Kersten Nitsche at 4:34 pm, Apr 18, 2024



**KERSTEN NITSCHÉ, MCIP RPP**  
 MANAGER (A), DEVELOPMENT REVIEW WEST  
 PLANNING, DEVELOPMENT AND BUILDING SERVICES  
 DEPARTMENT, CITY OF OTTAWA



**TOWER A - LEFT SIDE ELEVATION (RICHMOND ROAD)**

**GROUP HEAFEY**



Dessiné par : Tanya Nadeau  
 Conçu par : Christian Rheault

53 blvd Saint-Raymond, Suite 200-A  
 Gatineau, QC J8Y 1R8  
 www.lrarch.ca



365 Forest Street, 1420 Richmon Road and 2583-2589 Bond Street, Ottawa

1 : 200

D07-12-20-0041 1887-2303-19

REVISION 01	2020-12-18
REVISION 02	2022-08-29
REVISION 03	2022-12-09
REVISION 04	2023-08-03
REVISION 05	2023-10-18
REVISION 06	2023-12-06
REVISION 07	2024-01-18

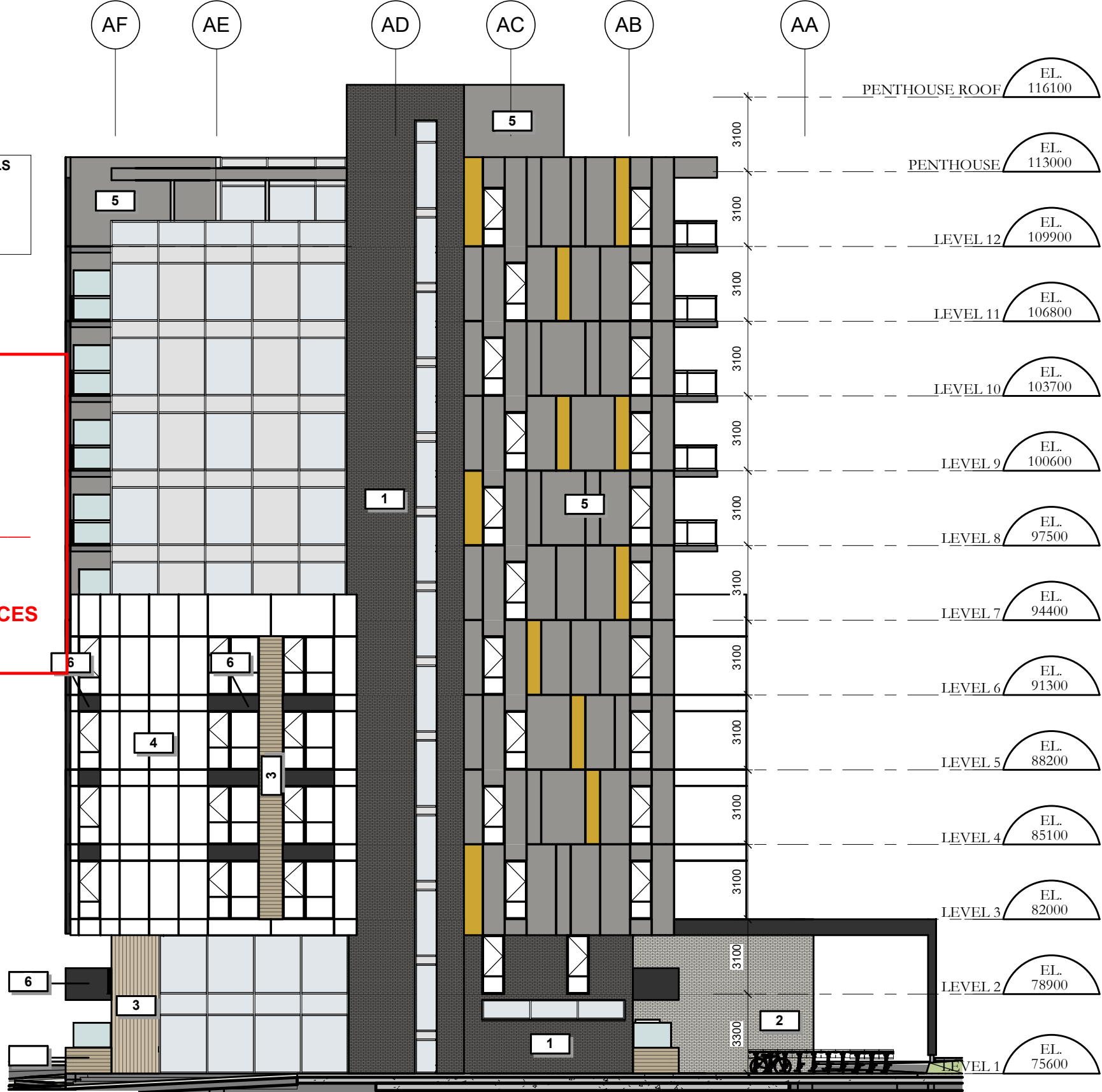
**STATISTICS OF THE % MATÉRIALS**  
 BUILDING AREA : 1059 m<sup>2</sup>  
 OPENING AREA : 353 m<sup>2</sup> (33.33%)  
 MASONRY : 231 m<sup>2</sup> (21.81%)  
 ALUMINIUM : 473 m<sup>2</sup> (44.66%)  
 OTHER : 2 m<sup>2</sup> (0.19%)

**APPROVED**

By Kersten Nitsche at 4:34 pm, Apr 18, 2024



**KERSTEN NITSCHÉ, MCIP RPP**  
**MANAGER (A), DEVELOPMENT REVIEW WEST**  
**PLANNING, DEVELOPMENT AND BUILDING SERVICES**  
**DEPARTMENT, CITY OF OTTAWA**



**TOWER A - RIGHT SIDE ELEVATION**

**GROUP HEAFEY**



Dessiné par : Tanya Nadeau  
 Conçu par : Christian Rheault

53 blvd Saint-Raymond, Suite 200-A  
 Gatineau, QC J8Y 1R8  
 www.lrarch.ca



365 Forest Street, 1420 Richmon Road and 2583-2589 Bond Street, Ottawa

1 : 200

D07-12-20-0041 1887-2303-19

REVISION 01	2020-12-18
REVISION 02	2022-08-29
REVISION 03	2022-12-09
REVISION 04	2023-08-03
REVISION 05	2023-10-18
REVISION 06	2023-12-06
REVISION 07	2024-01-18