

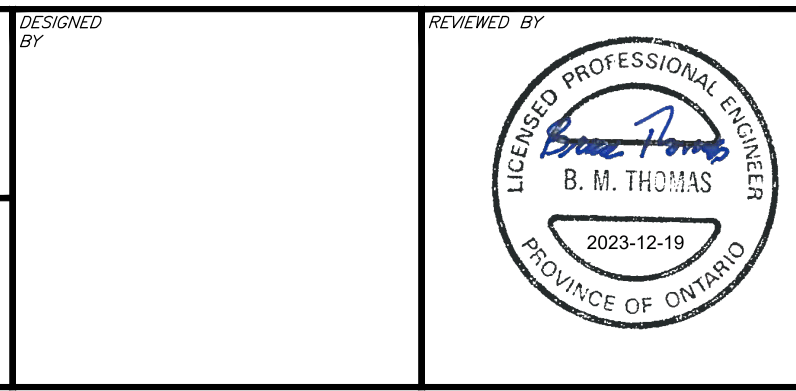
- NOTES:**
1. THE LOCATION OF UTILITIES IS APPROXIMATE ONLY, AND THE EXACT LOCATION SHOULD BE DETERMINED BY CONSULTING THE MUNICIPAL AUTHORITIES AND UTILITY COMPANIES CONCERNED. THE CONTRACTOR IS RESPONSIBLE TO PROVIDE THE LOCATION AND STATUS OF UTILITIES AND SHALL BE RESPONSIBLE FOR ADEQUATE PROTECTION OF PLANT AND EQUIPMENT FROM DAMAGE UNTIL SUCH TIME AS THE SERVICE PROVIDER HAS CONFIRMED IN WRITING THE SERVICE IS ABANDONED AND CAN BE REMOVED. THE CONTRACTOR SHALL BE RESPONSIBLE FOR REPAIR OR REPLACEMENT OF ANY SERVICES OR UTILITIES DISTURBED DURING CONSTRUCTION, TO THE SATISFACTION OF THE AUTHORITY HAVING JURISDICTION.
 2. THE CONTRACTOR SHALL VERIFY THE LOCATION AND ELEVATION OF EXISTING SERVICES PRIOR TO ANY CONSTRUCTION. THE CONTRACTOR SHALL CONFIRM LOCATIONS AND ELEVATIONS OF EXISTING SERVICES PRIOR TO SHORING AND EXCAVATING FOR THE BUILDING. ALL DIMENSIONS SHALL BE CHECKED AND VERIFIED IN THE FIELD BY THE CONTRACTOR PRIOR TO THE START OF CONSTRUCTION. ANY DISCREPANCIES, INTERPRETATIONS, CHANGES AND ADDITIONS TO THESE DRAWINGS MUST BE BROUGHT TO THE ATTENTION OF THE ENGINEER, WHEN NOTED AND BEFORE PROCEEDING WITH CONSTRUCTION WORKS. DO NOT CONTINUE CONSTRUCTION IN AREAS WHERE DISCREPANCIES APPEAR UNTIL SUCH DISCREPANCIES HAVE BEEN RESOLVED.
 3. FOR ADDITIONAL PROJECT NOTES REFER TO DRAWING C001.



CAUTION
THE POSITION OF ALL POLE LINES, CONDUITS, WATERMANS, SEWERS AND OTHER UNDERGROUND AND OVERGROUND UTILITIES AND STRUCTURES IS NOT NECESSARILY SHOWN ON THE CONTRACT DRAWINGS, AND WHERE SHOWN, THE ACCURACY OF THE POSITION OF SUCH UTILITIES AND STRUCTURES IS NOT GUARANTEED. BEFORE STARTING WORK, DETERMINE THE EXACT LOCATION OF ALL SUCH UTILITIES AND STRUCTURES AND ASSUME ALL LIABILITY FOR DAMAGE TO THEM.

NO	REVISION DESCRIPTION	DATE	BY	APPROV	REV	REVISION DESCRIPTION	DATE	BY	APPROV
7	REVISED PER CITY COMMENTS	09/12/22	SAB	BMT					
6	REVISED PER CITY COMMENTS	17/11/22	AC	BMT					
5	REVISED PER CITY COMMENTS	15/09/22	AC	BMT					
4	REVISED PER CITY COMMENTS	10/12/21	AC	JD					
3	REVISED PER CITY COMMENTS	27/05/21	AC	BMT					
2	ISSUED FOR REZONING APPLICATION	27/01/20	MZG	BMT					
1	ISSUED FOR REVIEW	12/09/19	SAB	BMT					

DESIGNED BY	SCALE	CLIENT	PROJECT	PROJECT No.
	0 2m 4m 10m HORIZONTAL 1:250	11061917 CANADA INCORPORATED 100-768 ST. JOSEPH BOULEVARD GATINEAU, QC. J8Y 4B8	11061917 CANADA INC RESIDENTIAL DEVELOPMENT 365 FOREST STREET OTTAWA, ONTARIO.	OTT-252570-A0
		exp. Services Inc. 1-416-333-8888 (T-416) 225-7330 1000 Avenue Road, Unit 100 Ottawa, ON K2B 8K6 Canada www.exp.com	PROJECT MANAGER BMT	DATE JAN 2020
			APPROVED BMT	DRAWING No. C002



BASE PLAN	PROJECT	PROJECT No.
SAB	11061917 CANADA INC RESIDENTIAL DEVELOPMENT 365 FOREST STREET OTTAWA, ONTARIO.	OTT-252570-A0
BMT		SURVEY ACV
BMT		DATE JAN 2020
SAB	EXISTING CONDITIONS AND REMOVALS PLAN	DRAWING No. C002
BMT		
BMT		

11061917 CANADA INC
RESIDENTIAL DEVELOPMENT
365 FOREST STREET
OTTAWA, ONTARIO.

EXISTING CONDITIONS
AND REMOVALS PLAN

C002