

APPROVED
By Kersten Nitsche at 4:23 pm, Apr 18, 2024

Kersten Nitsche

**KERSTEN NITSCHKE, MCIP RPP
MANAGER (A), DEVELOPMENT REVIEW WEST
PLANNING, DEVELOPMENT AND BUILDING SERVICES
DEPARTMENT, CITY OF OTTAWA**

CLIENT
Heafey GROUP
788 BOUL. ST-JOSEPH, SUITE 100 GATINEAU Q.C. CANADA J8Y 6R8
(819) 568-1723 info@heafeygroup.com

LOCATION PLAN

CONSULTANTS ARCHITECTS:
LAPALME RHEAULT
ARCHITECTES | ASSOCIÉS
63 BOUL. ST-JOSEPH, SUITE 200-A GATINEAU Q.C. J8Y 1R8
(819) 568-9028

SURVEYORS: ANNIS, O'SULLIVAN, VOLLEBECK LTD.
14 CONQUEST SQUARE, SUITE 500
NEPEAN, ONT. K2E 7S6
Phone: (613) 727-0850 / Fax: (613) 727-1079
Email: nepean@anniso.com

CIVIL ENGINEERS: exp.
100-2688 QUEENSWAY DRIVE
OTTAWA ON, K2B 6R6
Tel: (613) 988-1889

GENERAL NOTES:

- IT IS THE RESPONSIBILITY OF THE APPROPRIATE CONTRACTOR OR OFFICIAL TO REPORT ANY ERRORS, OMISSIONS OR DISCREPANCIES ON THIS PLAN WITH ACTUAL SITE CONDITIONS TO THE LANDSCAPE ARCHITECT BEFORE PROCEEDING WITH CONSTRUCTION.
- THE CONTRACTOR IS TO NOTIFY ALL UTILITY COMPANIES AND AUTHORITIES PRIOR TO ANY EXCAVATION AND ASCERTAIN LOCATIONS OF UNDERGROUND SERVICES.
- THE CONTRACTOR IS TO REINSTATE ALL AREAS AND ITEMS DAMAGED AS A RESULT OF CONSTRUCTION ACTIVITY.
- THE CONTRACTOR IS TO COMPLY WITH ALL PERTINENT CODES AND BY-LAWS.
- THE CONTRACTOR IS TO MAINTAIN A POSITIVE SURFACE RUN-OFF THROUGHOUT THE ENTIRE CONSTRUCTION PERIOD.
- THE LANDSCAPE ARCHITECT IS NOT RESPONSIBLE FOR SUBSURFACE CONDITIONS.
- THE CONTRACTOR IS TO IDENTIFY ALL EXISTING TREES TO REMAIN ON SITE WITH THE LANDSCAPE ARCHITECT PRIOR TO CONSTRUCTION.
- THE CONTRACTOR IS TO STAKE THE PROPOSED LOCATION OF ALL PLANT MATERIAL IN CONJUNCTION WITH THE LANDSCAPE ARCHITECT PRIOR TO EXCAVATION.
- MINIMUM DISTANCES FOR SELECTED DECIDUOUS TREES ARE AS FOLLOWS:
 - BUILDING FOUNDATIONS 7.5m
 - SIDEWALKS 1.5m
 - PUBLIC STREETS 2.5m
 - UNDERGROUND INFRASTRUCTURE 2.0m
- ALL TREES WITHIN 1m OF UNDERGROUND UTILITY TRENCHES ARE TO BE EXCAVATED BY HAND.
- REMOVE ALL PROTECTIVE WRAPPING FROM TREE TRUNKS AFTER INSTALLATION.
- STAKING OF TREES SHALL ONLY BE PERFORMED IF NECESSARY.
- ENSURE THAT MULCH IS PULLED BACK A MIN. DISTANCE OF 75mm FROM BASE OF TREE TRUNK.

No.	Issue	Date	DR	CK
12	REVISED PER NEW SITE PLAN	10/20/2023	ML	JL
11	REVISED PER NEW CIVIL DRAWING	31/03/2023	ML	JL
10	REVISED PER NEW SITE PLAN	30/08/2022	ML	JL
9	REVISED PER NEW SITE PLAN	11/09/2021	ML	JL
8	REVISED PER CITY COMMENTS	11/04/2021	ML	JL
7	REVISED PER NEW SITE PLAN	03/23/2021	ML	JL
6	REVISED PER NEW SITE PLAN	02/25/2021	ML	JL
5	REVISED PER CITY COMMENTS	11/24/2020	ML	JL
4	REVISED PER CITY COMMENTS	09/13/2020	ML	JL
3	ISSUED FOR COORDINATION	03/20/2020	ML	JL
2	ISSUED FOR COORDINATION	03/19/2020	ML	JL
1	ISSUED FOR DISCUSSION AND REVIEW	03/11/2020	ML	JL

JAMES B. LENNOX & ASSOCIATES INC.
LANDSCAPE ARCHITECTS
3332 CARLING AVE. OTTAWA, ONTARIO K2H 5A8
Tel: (613) 722-5168 Fax: (1866) 343-3942

PROJECT
NEW APARTMENT COMPLEX
365 FOREST STREET, OTTAWA ON

DRAWING
TREE CONSERVATION REPORT AND
LANDSCAPE PLAN

STAMP

AS SHOWN

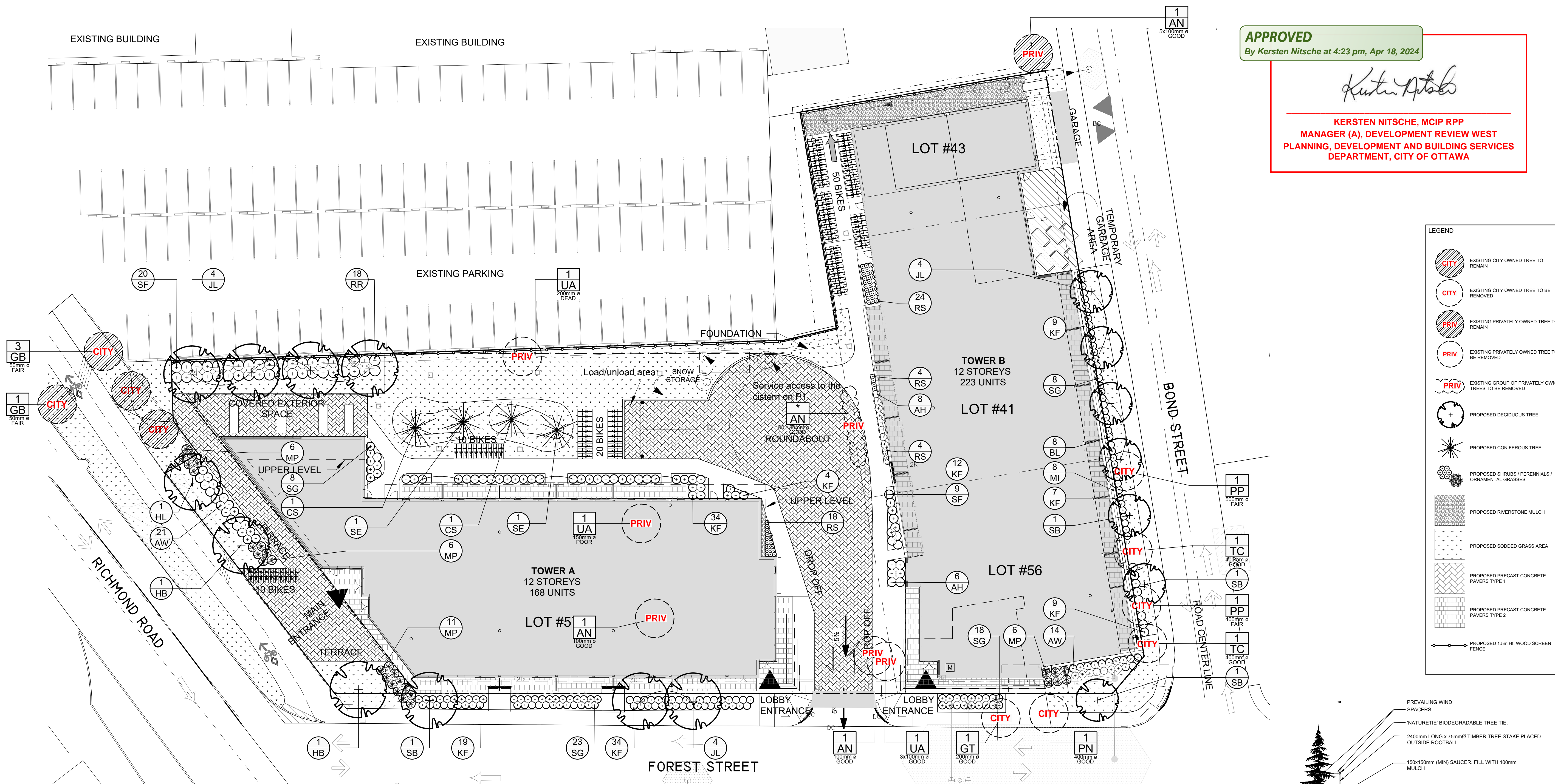
START DATE
JULY, 2019

PROJECT NO.
19MIS1969

TRUE NORTH

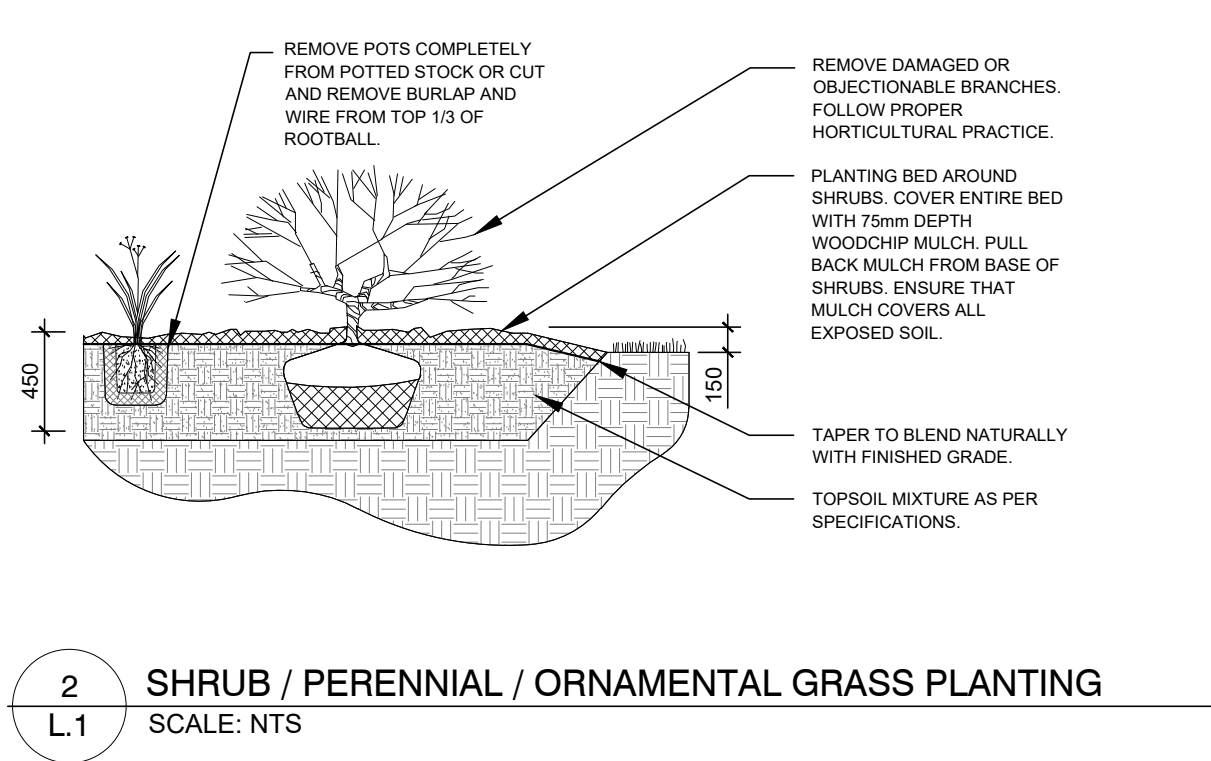
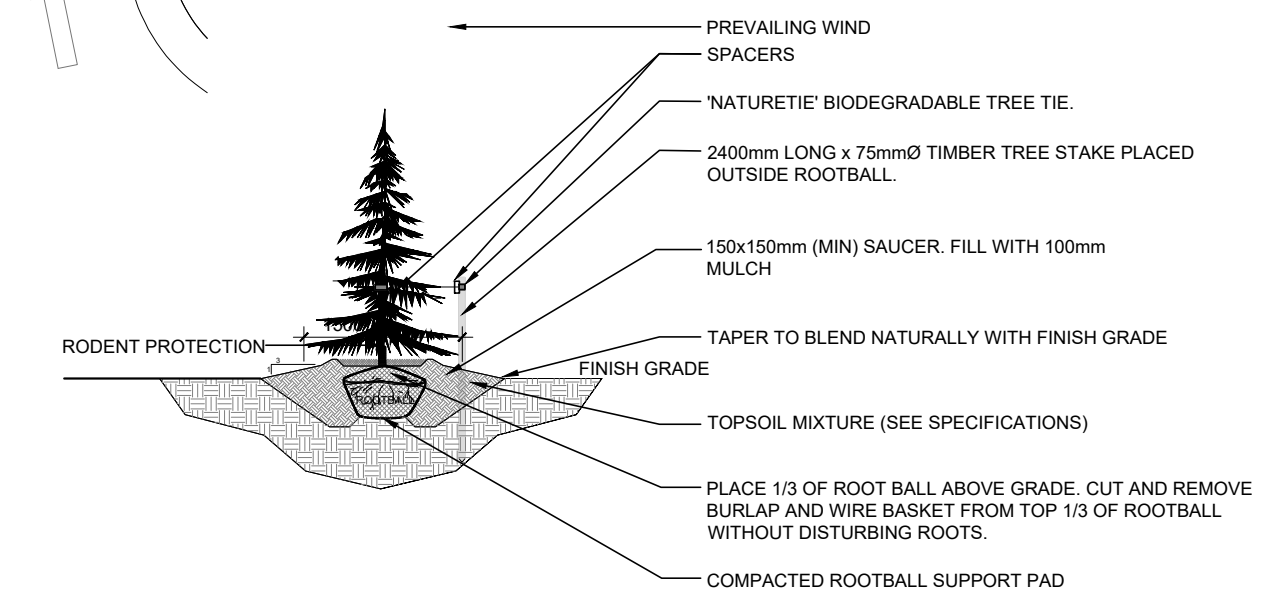
DRAWING NO.
L.1

PLOT SIZE ARCH-D



LEGEND

- EXISTING CITY OWNED TREE TO REMAIN
- EXISTING CITY OWNED TREE TO BE REMOVED
- EXISTING PRIVATELY OWNED TREE TO REMAIN
- EXISTING PRIVATELY OWNED TREE TO BE REMOVED
- EXISTING GROUP OF PRIVATELY OWNED TREES TO BE REMOVED
- PROPOSED DECIDUOUS TREE
- PROPOSED CONIFEROUS TREE
- PROPOSED SHRUBS / PERENNIALS / ORNAMENTAL GRASSES
- PROPOSED RIVERSTONE MULCH
- PROPOSED SODDED GRASS AREA
- PROPOSED PRECAST CONCRETE PAVERS TYPE 1
- PROPOSED PRECAST CONCRETE PAVERS TYPE 2
- PROPOSED 1.5m H. WOOD SCREEN FENCE



1 TREE CONSERVATION REPORT & LANDSCAPE PLAN
L.1 SCALE 1:250

EXISTING TREE LIST						
KEY	QTY	BOTANICAL NAME	COMMON NAME	SIZE	CONDITION	REMARKS
TREES						
AN	*	Acer negundo	Manitoba Maple	100-150mm DBH	Good	See Plan
GT	1	Gleditsia triacanthos	Honey Locust	200mm DBH	Good	See Plan
PN	1	Pinus nigra	Australian Pine	400mm DBH	Good	See Plan
PP	2	Picea pungens 'Glauca'	Colorado Blue Spruce	400-500mm DBH	Fair	See Plan
TC	2	Tilia cordata	Littleleaf Linden	400mm DBH	Fair	See Plan
TO	*	Thuja occidentalis	Eastern White Cedar	50-350mm DBH	Dead-Good	See Plan
UA	2	Ulmus americana	American Elm	100-400mm DBH	Dead-Poor	See Plan

PROPOSED PLANT LIST						
KEY	QTY	BOTANICAL NAME	COMMON NAME	SIZE	CONDITION	REMARKS
TREES						
CS	2	Picea pungens	Colorado Spruce	1.8m Ht.	B&B	
HB	2	Celtis occidentalis	Honey Locust	60mm Ø	B&B	
HL	1	Gleditsia triacanthos	Honey Locust	60mm Ø	B&B	
JL	10	Syringa reticulata	Japanese Tree Lilac	60mm Ø	B&B	Single Leader
SB	4	Amelanchier canadensis	Serviceberry	60mm Ø	B&B	
SE	2	Picea omorika	Serbian Spruce	1.8m Ht.	B&B	
SHRUBS						
AH	15	Hydrangea arborescens 'Annabelle'	Annabelle Hydrangea	3 gal. pot	Potted	800 mm o.c. See Plan
AW	35	Spiraea japonica 'Anthony Waterer'	Anthony Waterer Spirea	600mm Ht.	Potted	Space 800mm O.C.
MP	29	Pinus mugo 'Pumilio'	Dwarf Mugo Pine	600mm Spr.	Potted	Space 1000mm O.C.
RR	18	Rosa rugosa	Rugosa Rose	800mm Ht.	Potted	Space 1000mm O.C.
SF	29	Sobaria sordifolia 'Sem'	Sem False Spirea	800mm Ht.	Potted	Space 1000mm O.C.
PERENNIALS / ORNAMENTAL GRASSES						
BL	8	Leymus arenarius	Blue Lyme Grass	250mm Pot.	Potted	Space 800mm O.C.
KF	128	Calamagrostis acutiflora 'Karl Foerster'	Feather Reed Grass	250mm Pot.	Potted	Space 800mm O.C.
MI	8	Miscanthus sinensis 'Huron Blue'	Huron Blush Grass	250mm Pot.	Potted	Space 400mm O.C.
RS	42	Hemerocallis 'Ruby Stella'	Ruby Stella Daylily	100mm Pot.	Potted	Space 400mm O.C.
SG	57	Panicum virgatum 'Shenandoah'	Shenandoah Switch Grass	250mm Pot.	Potted	Space 800mm O.C.

D07-12-20-0041