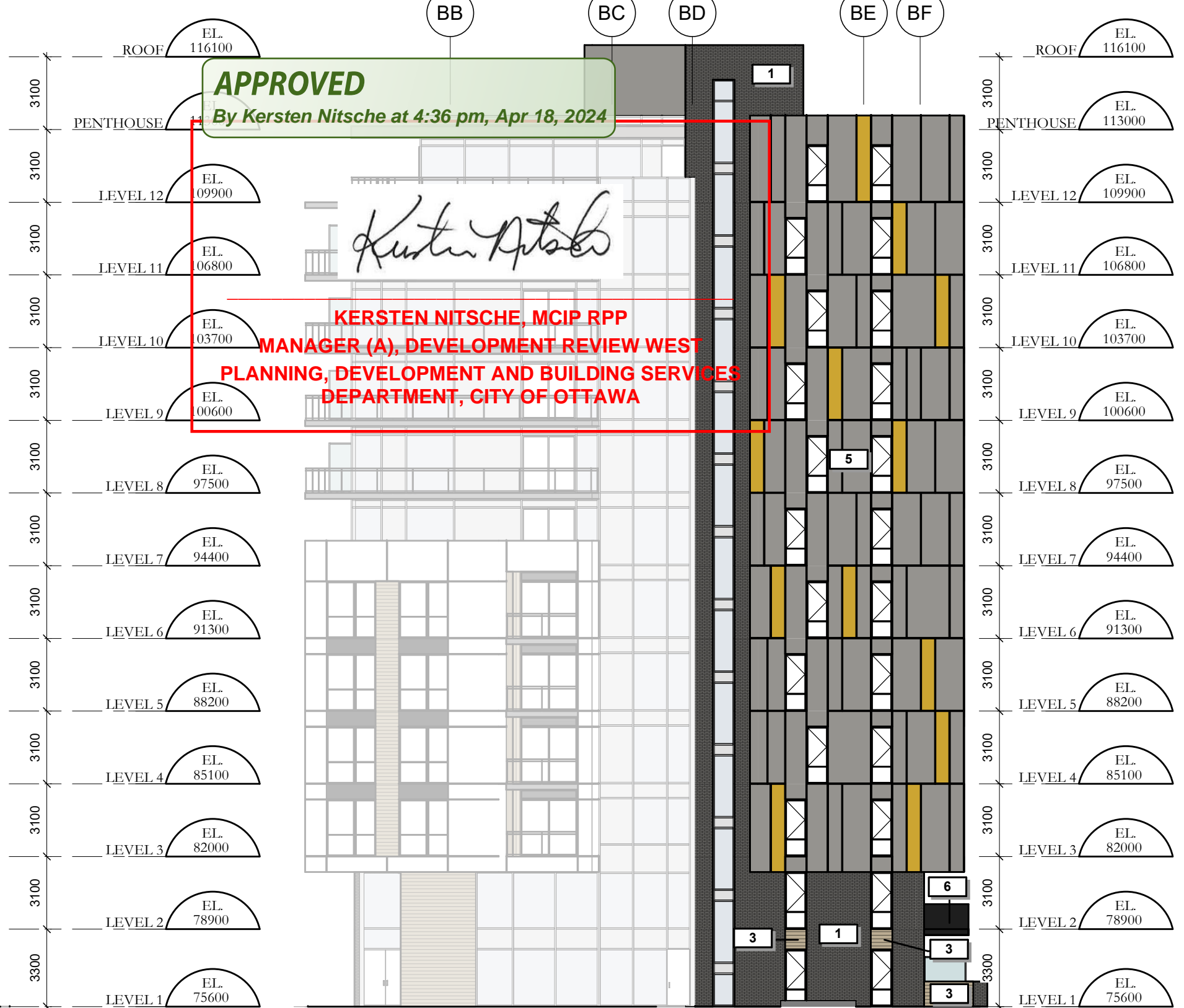
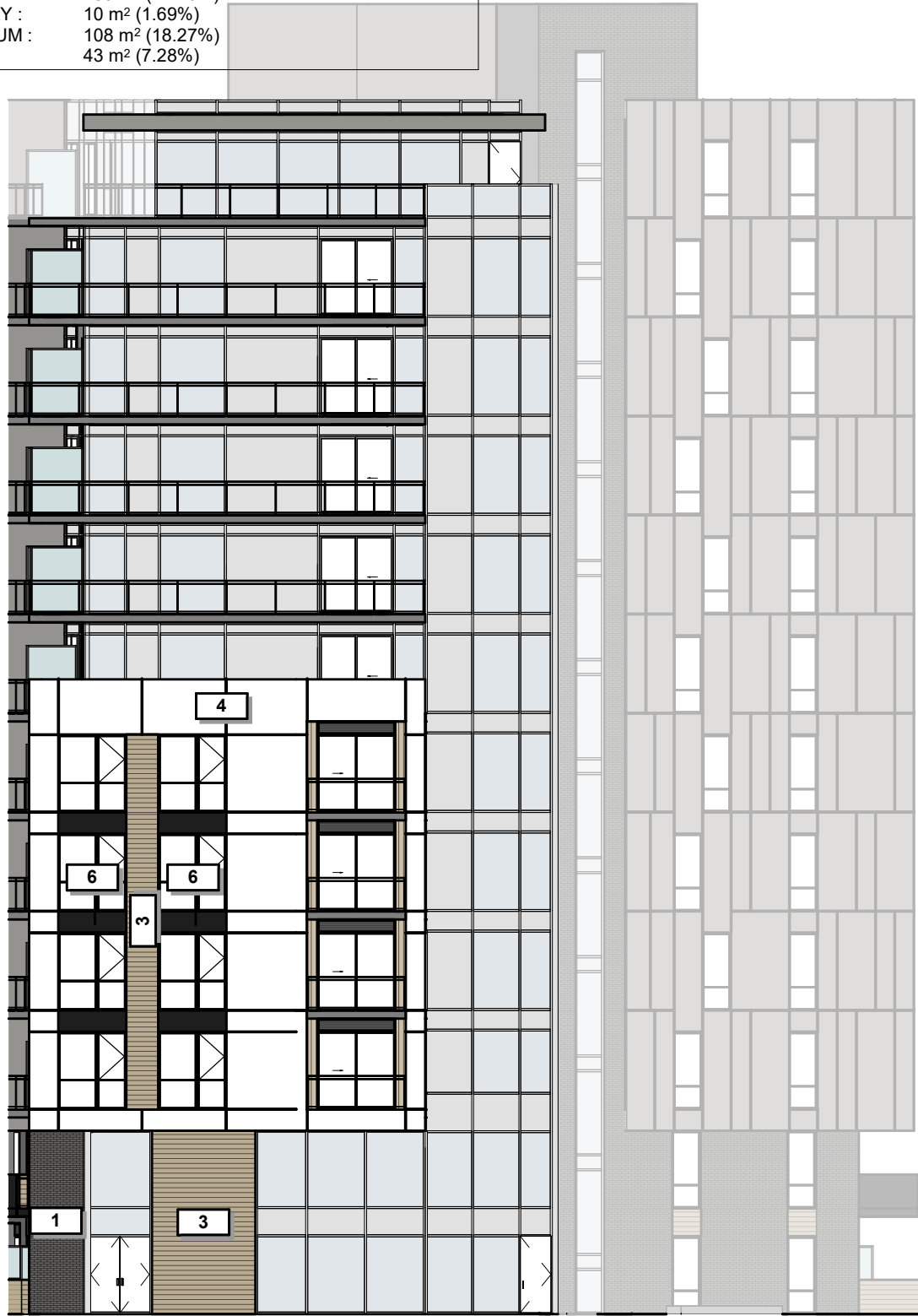


STATISTICS OF THE % MATERIALS
 BUILDING AREA : 591 m²
 OPENING AREA : 430 m² (72.76%)
 MASONRY : 10 m² (1.69%)
 ALUMINIUM : 108 m² (18.27%)
 OTHER : 43 m² (7.28%)



APPROVED
 By Kersten Nitsche at 4:36 pm, Apr 18, 2024

Kersten Nitsche

**KERSTEN NITSCHÉ, MCIP RPP
 MANAGER (A), DEVELOPMENT REVIEW WEST
 PLANNING, DEVELOPMENT AND BUILDING SERVICES
 DEPARTMENT, CITY OF OTTAWA**

TOWER B - FRONT ELEVATIONS (FOREST STREET)

STATISTICS OF THE % MATERIALS
 BUILDING AREA : 460 m²
 OPENING AREA : 90 m² (19.57%)
 MASONRY : 103 m² (22.39%)
 ALUMINIUM : 267 m² (58.04%)

GROUP HEAFEY



Dessiné par : Tanya Nadeau
 Conçu par : Christian Rheault

53 blvd Saint-Raymond, Suite 200-A
 Gatineau, QC J8Y 1R8
 www.lrarch.ca



365 Forest Street, Ottawa, ON K2B 7Z7

1 : 200
 D07-12-20-0041 1887-2303-19

REVISION 01	2020-12-18
REVISION 02	2022-08-29
REVISION 03	2022-12-09
REVISION 04	2023-08-03
REVISION 05	2023-10-18
REVISION 06	2023-12-06
REVISION 07	2024-01-18

STATISTICS OF THE % MATÉRIALS
 BUILDING AREA : 979 m²
 OPENING AREA : 198 m² (20.22%)
 MASONRY : 148 m² (15.12%)
 ALUMINIUM : 633 m² (64.66%)



TOWER B - BACK ELEVATION

APPROVED

By Kersten Nitsche at 4:37 pm, Apr 18, 2024

**KERSTEN NITSCHÉ, MCIP RPP
 MANAGER (A), DEVELOPMENT REVIEW WEST
 PLANNING, DEVELOPMENT AND BUILDING SERVICES
 DEPARTMENT, CITY OF OTTAWA**



TOWER B - LEFT SIDE ELEVATION

GROUP HEAFEY



Dessiné par : Tanya Nadeau
 Conçu par : Christian Rheault

53 blvd Saint-Raymond, Suite 200-A
 Gatineau, QC J8Y 1R8
 www.lrarch.ca



365 Forest Street, Ottawa, ON K2B 7Z7

1 : 200

D07-12-20-0041 1887-2303-19

REVISION 01	2020-12-18
REVISION 02	2022-08-29
REVISION 03	2022-12-09
REVISION 04	2023-08-03
REVISION 05	2023-10-18
REVISION 06	2023-12-06
REVISION 07	2024-01-18

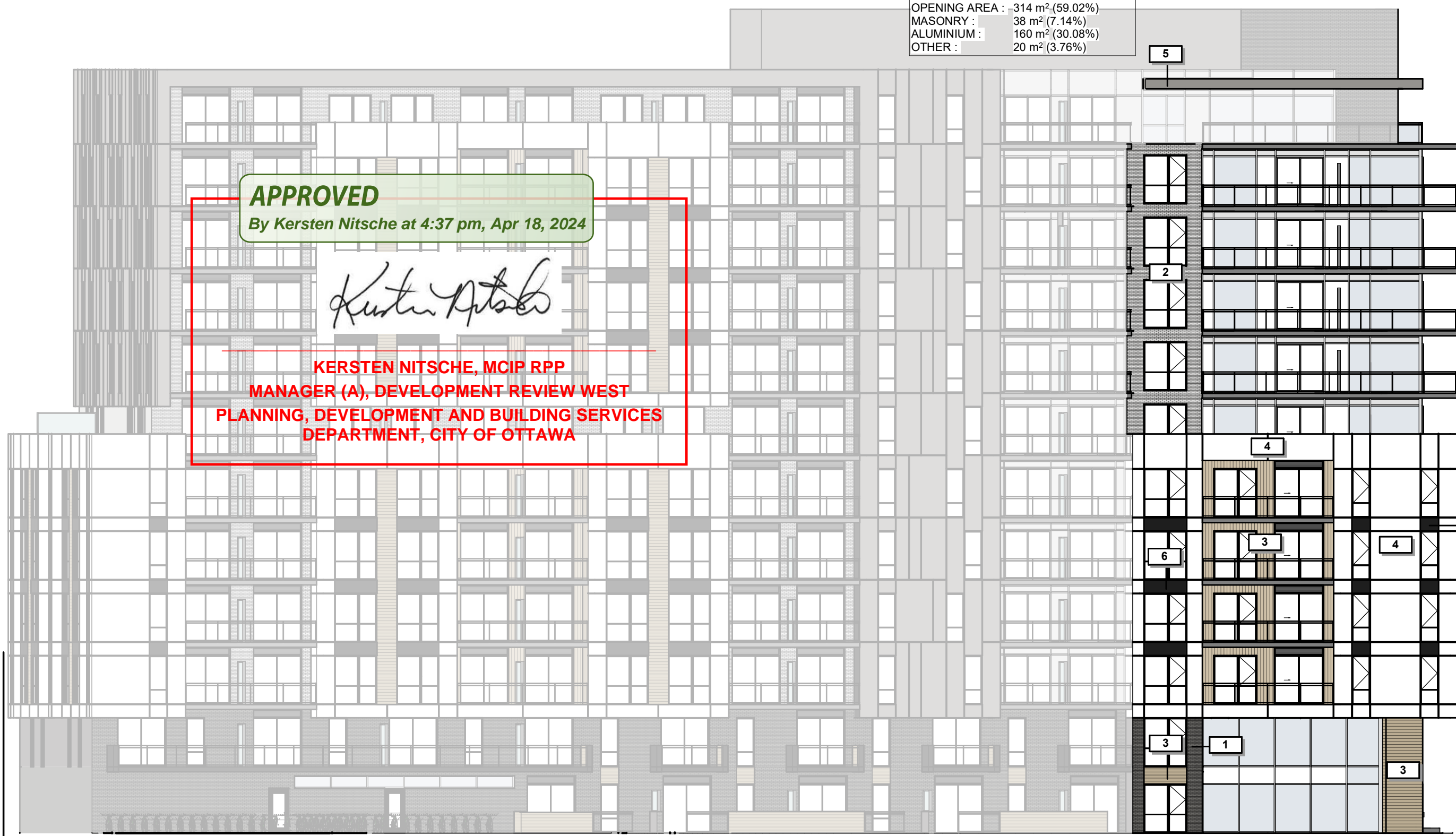
STATISTICS OF THE % MATÉRIALS
 BUILDING AREA : 532 m²
 OPENING AREA : 314 m² (59.02%)
 MASONRY : 38 m² (7.14%)
 ALUMINIUM : 160 m² (30.08%)
 OTHER : 20 m² (3.76%)

- ROOF EL. 116100
- PENTHOUSE EL. 113000
- LEVEL 12 EL. 109900
- LEVEL 11 EL. 106800
- LEVEL 10 EL. 103700
- LEVEL 9 EL. 100600
- LEVEL 8 EL. 97500
- LEVEL 7 EL. 94400
- LEVEL 6 EL. 91300
- LEVEL 5 EL. 88200
- LEVEL 4 EL. 85100
- LEVEL 3 EL. 82000
- LEVEL 2 EL. 78900
- LEVEL 1 EL. 75600

APPROVED
 By Kersten Nitsche at 4:37 pm, Apr 18, 2024



KERSTEN NITSCHÉ, MCIP RPP
MANAGER (A), DEVELOPMENT REVIEW WEST
PLANNING, DEVELOPMENT AND BUILDING SERVICES
DEPARTMENT, CITY OF OTTAWA



TOWER B - LEFT SIDE ELEVATION

GROUP HEAFEY



Dessiné par : Tanya Nadeau
 Conçu par : Christian Rheault

53 blvd Saint-Raymond, Suite 200-A
 Gatineau, QC J8Y 1R8
 www.lrarch.ca



365 Forest Street, Ottawa, ON K2B 7Z7

1 : 200

D07-12-20-0041 1887-2303-19

REVISION 01	2020-12-18
REVISION 02	2022-08-29
REVISION 03	2022-12-09
REVISION 04	2023-08-03
REVISION 05	2023-10-18
REVISION 06	2023-12-06
REVISION 07	2024-01-18

B11

B10

B9

B8

B7

B6

B5

B4

B3

B2

B1

STATISTICS OF THE % MATERIALS

BUILDING AREA :	2720 m ²
OPENING AREA :	1109 m ² (40.77%)
MASONRY :	566 m ² (20.81%)
ALUMINIUM :	964 m ² (35.44%)
OTHER :	81 m ² (2.98%)

ROOF	EL. 116100
RENTHOUSE	EL. 113000
LEVEL 12	EL. 109900
LEVEL 11	EL. 106800
LEVEL 10	EL. 103700
LEVEL 9	EL. 100600
LEVEL 8	EL. 97500
LEVEL 7	EL. 94400
LEVEL 6	EL. 91300
LEVEL 5	EL. 88200
LEVEL 4	EL. 85100
LEVEL 3	EL. 82000
LEVEL 2	EL. 78900
LEVEL 1	EL. 75600

APPROVED
By Kersten Nitsche at 4:38 pm, Apr 18, 2024

Kersten Nitsche

**KERSTEN NITSCHKE, MOIP RPP
MANAGER (A), DEVELOPMENT REVIEW WEST
PLANNING, DEVELOPMENT AND BUILDING SERVICES
DEPARTMENT, CITY OF OTTAWA**



TOWER B - RIGHT SIDE ELEVATION (BOND STREET)

GROUP HEAFEY



Dessiné par : Tanya Nadeau
Conçu par : Christian Rheault

53 blvd Saint-Raymond, Suite 200-A
Gatineau, QC J8Y 1R8
www.lrarch.ca



365 Forest Street, Ottawa, ON K2B 7Z7

1 : 200

D07-12-20-0041 1887-2303-19

REVISION 01	2020-12-18
REVISION 02	2022-08-29
REVISION 03	2022-12-09
REVISION 04	2023-08-03
REVISION 05	2023-10-18
REVISION 06	2023-12-06
REVISION 07	2024-01-18