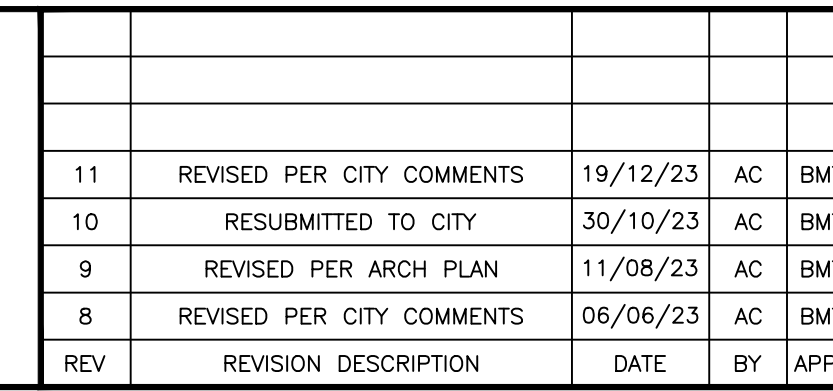
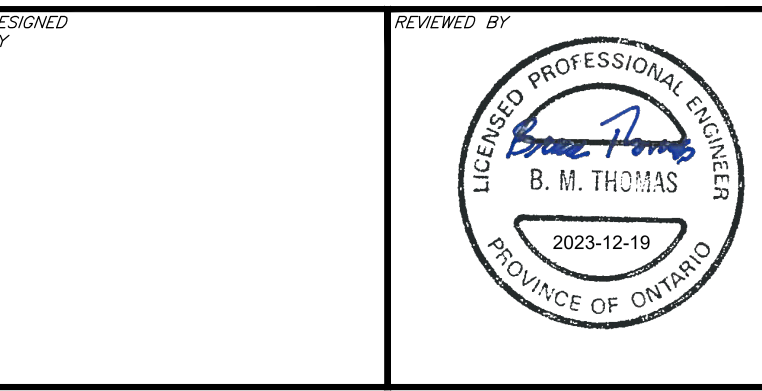


CAUTION
 THE POSITION OF ALL POLE LINES, CONDUITS, WATERMANS, SEWERS AND OTHER UNDERGROUND AND OVERGROUND UTILITIES AND STRUCTURES IS NOT NECESSARILY SHOWN ON THE CONTRACT DRAWINGS, AND WHERE SHOWN, THE ACCURACY OF THE POSITION OF SUCH UTILITIES AND STRUCTURES IS NOT GUARANTEED. BEFORE STARTING WORK, DETERMINE THE EXACT LOCATION OF ALL SUCH UTILITIES AND STRUCTURES AND ASSUME ALL LIABILITY FOR DAMAGE TO THEM.

NO.	REVISION DESCRIPTION	DATE	BY	APPD	REV	REVISION DESCRIPTION	DATE	BY	APPD
7	REVISED PER CITY COMMENTS	09/12/22	SAB	BMT					
6	REVISED PER CITY COMMENTS	17/11/22	AC	BMT					
5	REVISED PER CITY COMMENTS	15/09/22	AC	BMT					
11	REVISED PER CITY COMMENTS	19/12/23	AC	BMT	4	REVISED PER CITY COMMENTS	10/12/21	AC	JD
10	RESUBMITTED TO CITY	30/10/23	AC	BMT	3	REVISED PER CITY COMMENTS	27/05/21	AC	BMT
9	REVISED PER ARCH PLAN	11/08/23	AC	BMT	2	ISSUED FOR REZONING APPLICATION	27/01/20	MZG	BMT
8	REVISED PER CITY COMMENTS	06/06/23	AC	BMT	1	ISSUED FOR REVIEW	12/09/19	SAB	BMT
REV	REVISION DESCRIPTION					REVISION DESCRIPTION			



DESIGNED BY: [Signature]
 SCALE: 1:250
 REVIEWED BY: [Signature]
 CLIENT: 11061917 CANADA INCORPORATED
 100-768 ST. JOSEPH BOULEVARD
 GATINEAU, QC. J8Y 4B8



exp. inc.
 1-877-668-1899 | 1-613-225-7330
 1000 Wellington Drive, Unit 100
 Ottawa, ON K2B 8H6
 Canada
 www.exp.com
 • BUILDINGS • EARTH & ENVIRONMENT • ENERGY •
 • INDUSTRIAL • INFRASTRUCTURE • SUSTAINABILITY •

PROJECT	11061917 CANADA INC RESIDENTIAL DEVELOPMENT 365 FOREST STREET OTTAWA, ONTARIO.
PROJECT NO.	OTT-252570-A0
SURVEY	ACV
DATE	JAN 2020
DRAWING NO.	C200
PROJECT MANAGER	SITE GRADING PLAN