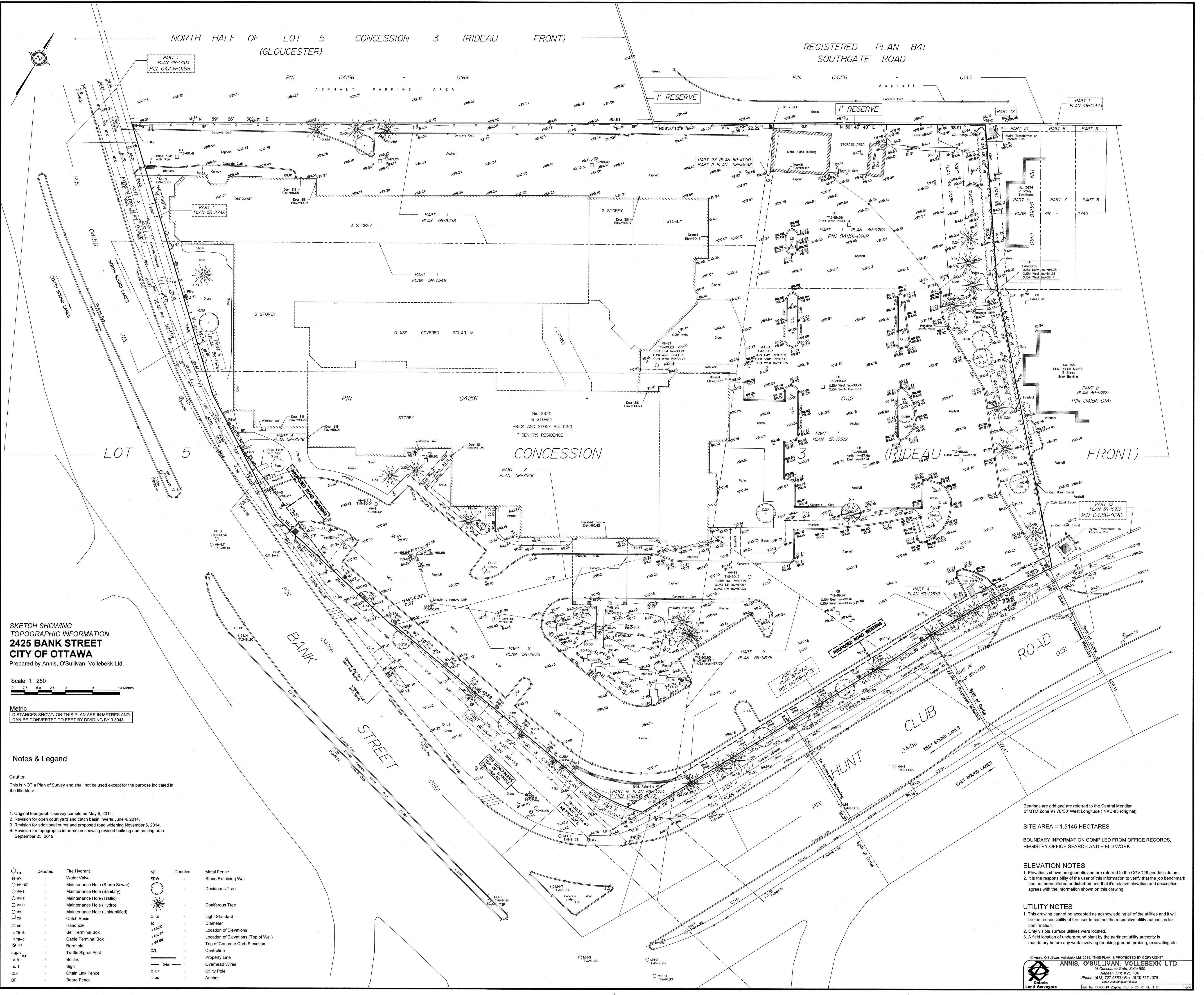


NORTH HALF OF LOT 5 CONCESSION 3 (RIDEAU FRONT)
(GLOUCESTER)

REGISTERED PLAN 841
SOUTHGATE ROAD



SKETCH SHOWING
TOPOGRAPHIC INFORMATION
2425 BANK STREET
CITY OF OTTAWA
Prepared by Annis, O'Sullivan, Vollebek Ltd.

Scale 1:250
10 7.5 5.0 2.5 0 5 10 Metres

Metric
DISTANCES SHOWN ON THIS PLAN ARE IN METRES AND
CAN BE CONVERTED TO FEET BY DIVIDING BY 0.3048

Notes & Legend

Caution
This is NOT a Plan of Survey and shall not be used except for the purpose indicated in the title block.

- 1. Original topographic survey completed May 9, 2014.
- 2. Revision for open court yard and catch basin inverts June 4, 2014.
- 3. Revision for additional curbs and proposed road widening November 6, 2014.
- 4. Revision for topographic information showing revised building and parking area September 25, 2019.

○ FH	Denotes	Fire Hydrant	MF	Denotes	Metal Fence
○ WV	-	Water Valve	SRW	-	Stone Retaining Wall
○ MH-ST	-	Maintenance Hole (Storm Sewer)	○	-	Deciduous Tree
○ MH-S	-	Maintenance Hole (Sanitary)	○	-	Coniferous Tree
○ MH-T	-	Maintenance Hole (Traffic)	○ LS	-	Light Standard
○ MH-H	-	Maintenance Hole (Hydro)	○	-	Diameter
○ MH	-	Maintenance Hole (Unidentified)	+85.00	-	Location of Elevations
□ CB	-	Catch Basin	+85.00	-	Location of Elevations (Top of Wall)
□ HH	-	Handhole	+86.00	-	Top of Concrete Curb Elevation
□ TB-B	-	Bell Terminal Box	C/L	-	Centreline
□ TB-C	-	Cable Terminal Box	— OHW —	-	Property Line
○ BH	-	Borehole	○ UP	-	Utility Pole
○ TSP	-	Traffic Signal Post	○ AN	-	Anchor
○ B	-	Boisard			
△ S	-	Sign			
CLF	-	Chain Link Fence			
BF	-	Board Fence			

Bearings are grid and are referred to the Central Meridian of MTM Zone 9 (76°30' West Longitude) NAD-83 (original).

SITE AREA = 1.5145 HECTARES

BOUNDARY INFORMATION COMPILED FROM OFFICE RECORDS,
REGISTRY OFFICE SEARCH AND FIELD WORK.

ELEVATION NOTES

- 1. Elevations shown are geodetic and are referred to the CGVD28 geodetic datum.
- 2. It is the responsibility of the user of this information to verify that the job benchmark has not been altered or disturbed and that its relative elevation and description agrees with the information shown on this drawing.

UTILITY NOTES

- 1. This drawing cannot be accepted as acknowledging all of the utilities and it will be the responsibility of the user to contact the respective utility authorities for confirmation.
- 2. Only visible surface utilities were located.
- 3. A field location of underground plant by the pertinent utility authority is mandatory before any work involving breaking ground, probing, excavating etc.