



CAIVAN
COMMUNITIES

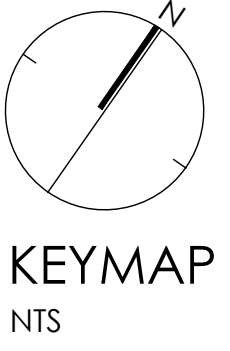
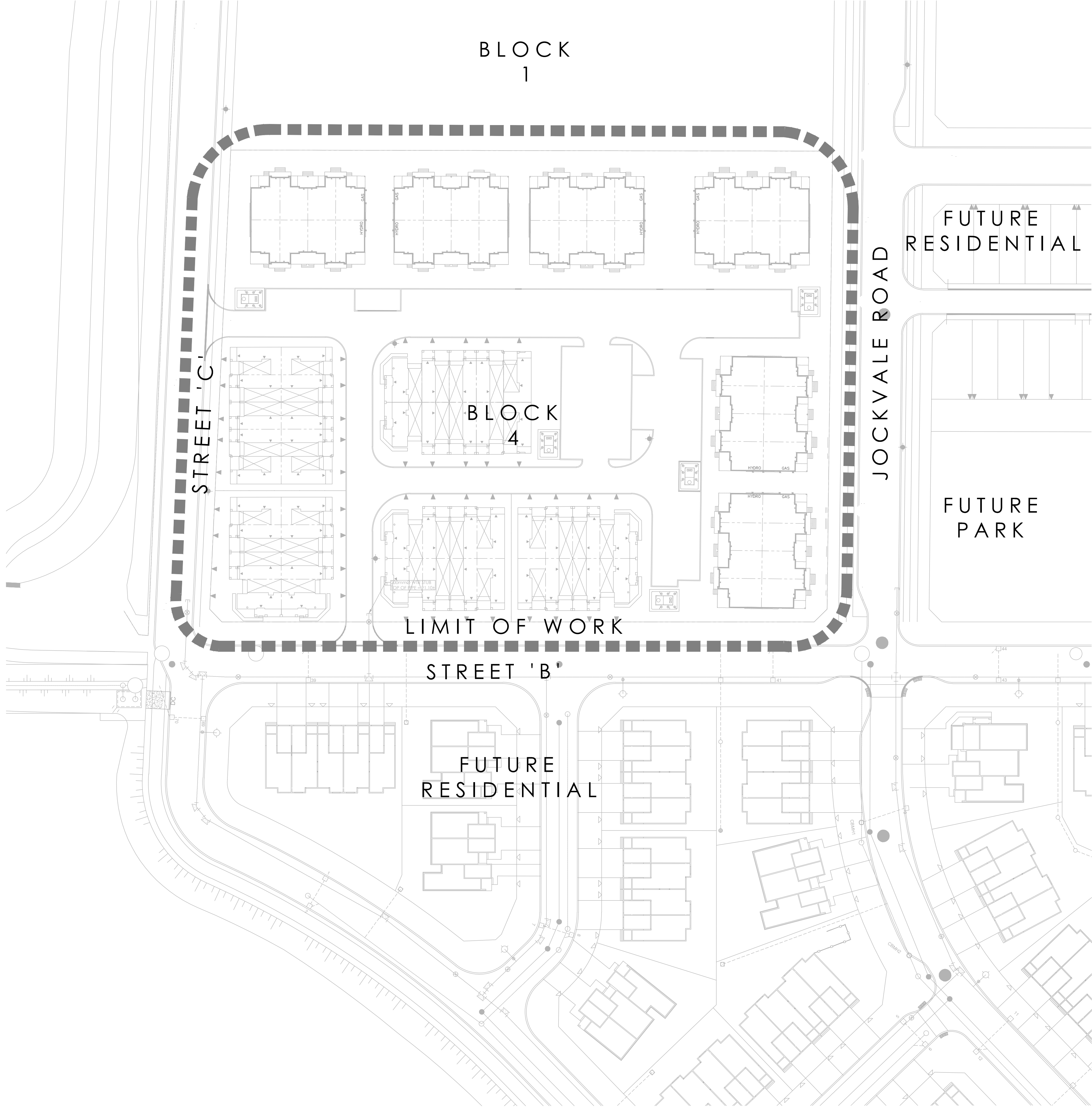
MATTAMY LIMITED / CAIVAN COMMUNITIES
SOUTH NEPEAN TOWN CENTRE

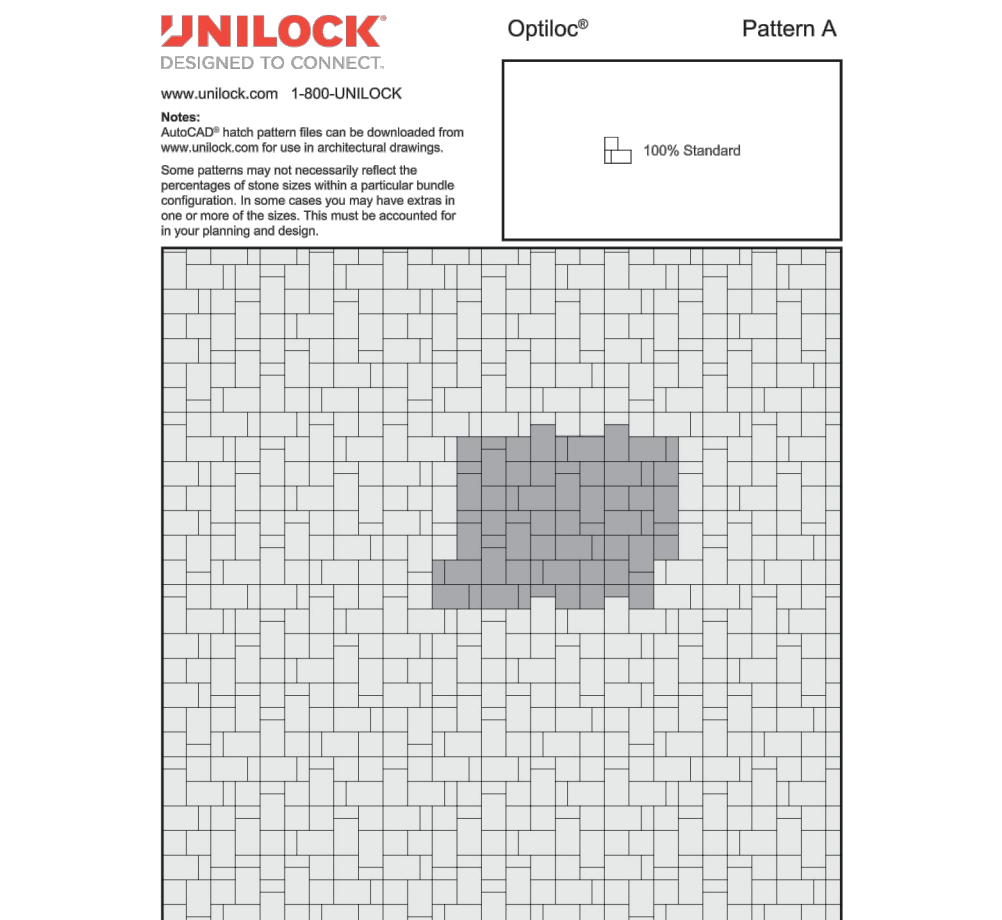
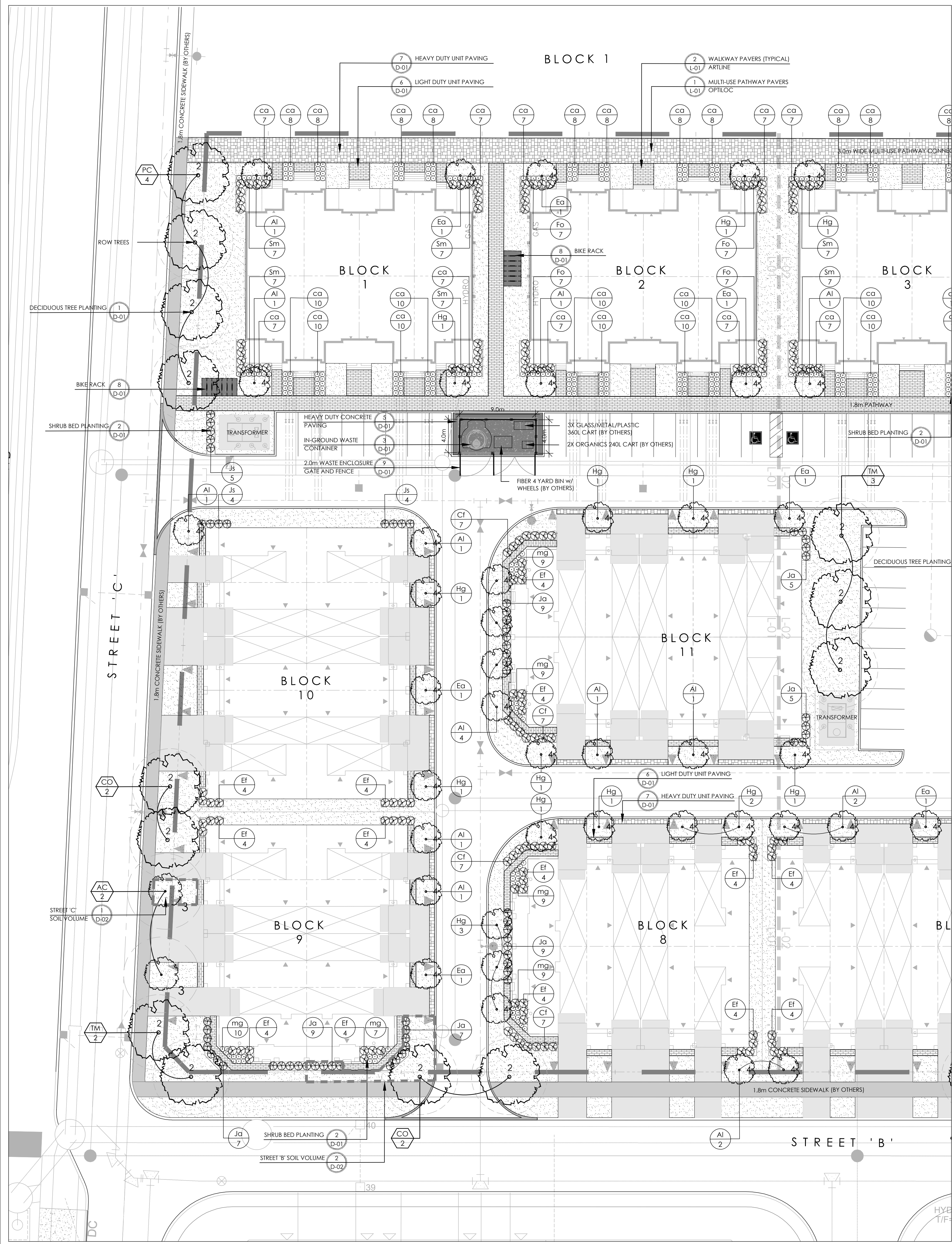
BLOCK 4
3288 GREENBANK ROAD



LIST OF DRAWINGS:

- L-01 - LANDSCAPE PLAN
- L-02 - LANDSCAPE PLAN
- D-01 - DETAILS
- D-02 - ROW & SOIL VOLUME

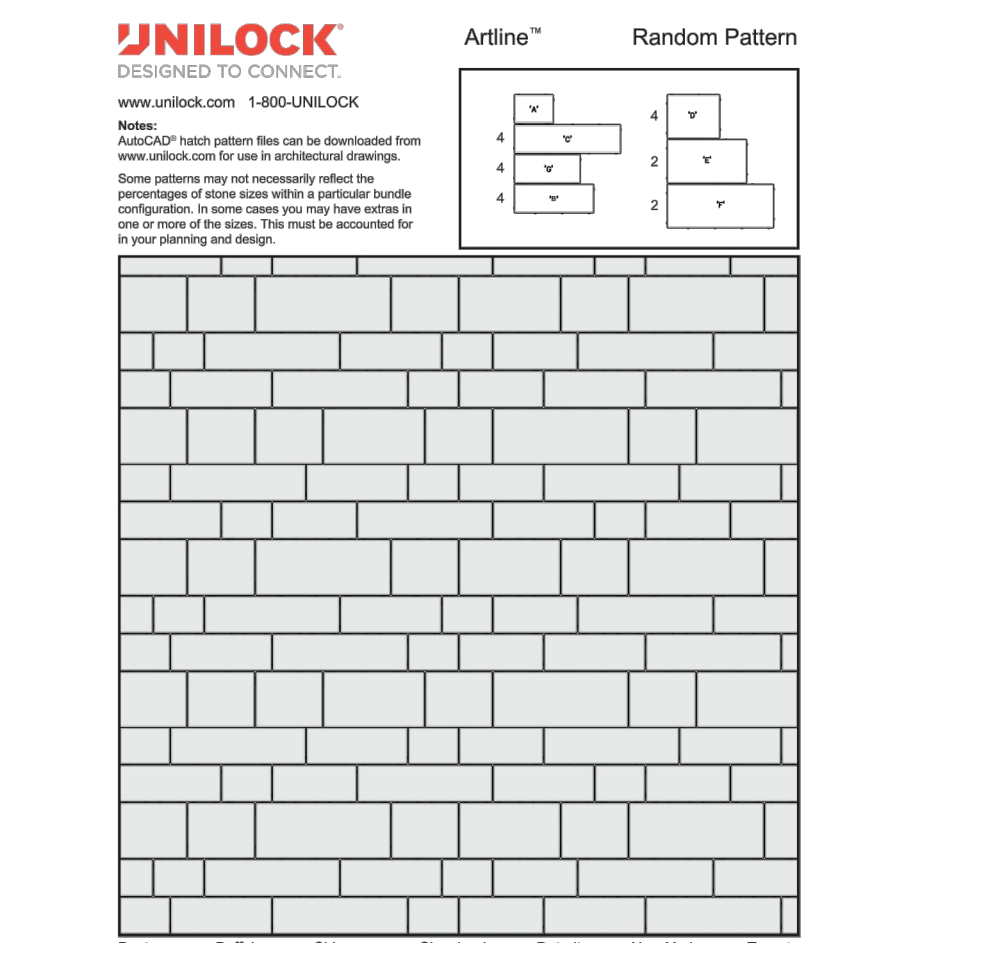




1 MULTI-USE PATHWAY PAVERS - OPTILOC
1:100



2 TYPICAL WALKWAY PAVERS - ARTLINE
1:100



2 TYPICAL WALKWAY PAVERS - ARTLINE
1:100

GENERAL NOTES:

- ACER RUBRUM AND CELTIS OCCIDENTALIS TO BE SPRING DUG SPECIMENS AND PLANTED IN THE SPRING ONLY.
- THE LOCATION OF THE TREES SHOWN ON THIS PLAN IS APPROXIMATE AND SHALL NOT BE SCALED FROM THIS DRAWING. THIS PLAN MUST BE READ IN CONJUNCTION WITH THE APPROVED CUP AND CITY CROSS SECTIONS.
- CONTRACTOR SHALL ENSURE THAT ALL UTILITY LOCATIONS ARE OBTAINED PRIOR TO ANY EXCAVATION FOR LANDSCAPING.
- LOCATION OF ALL PLANT MATERIALS TO BE STAKED BY THE CONTRACTOR AND VERIFIED IN THE FIELD BY LANDSCAPE ARCHITECT & CITY OF OTTAWA PRIOR TO THE EXCAVATION OF PITS.
- ALL PLANT MATERIAL SHALL BE NURSERY GROWN STOCK UNLESS OTHERWISE NOTED.
- TREES TO HAVE A MINIMUM 1800 CLEAR STEM ABOVE GRADE.
- PLACE SOD ON A MINIMUM 150mm TOPSOIL.
- CONTRACTOR TO MAKE GOOD ALL EXISTING AREAS DAMAGED BY HIS WORK TO THE SATISFACTION OF THE CITY OF OTTAWA.
- THE CITY WILL BE NOTIFIED IF ANY TREES CANNOT BE LOCATED OR PLANTED DUE TO CONFLICTS WITH UTILITIES OR DRIVEWAYS. THE REQUIRED TREES NOT PLANTED ARE SUBJECT TO TREE BANKING. THE FINAL NUMBER OF TREES TO BE BANKED WILL BE PROVIDED TO THE CITY FOLLOWING ALL PLANTINGS (REFERS TO ROW TREES ONLY).
- ALL PLANT MATERIAL SHALL BE WARRANTED FOR TWO YEARS FROM THE DATE OF PERFORMANCE ACCEPTANCE AS DETERMINED BY THE CITY OF OTTAWA.
- PERIODIC REVIEWS OF PLANTING SHALL BE CARRIED OUT BY THE LANDSCAPE ARCHITECT.
- PLANTINGS TO BE STAKED FOR APPROVAL PRIOR TO CONSTRUCTION.
- CITY GRASS CUTTING RESPONSIBILITIES FOR SODDED AREAS SHALL BEGIN FOLLOWING PERFORMANCE ACCEPTANCE INSPECTION BY THE LANDSCAPE ARCHITECT AND THE CITY. ACCEPTANCE WILL BE PROVIDED ONLY IF:
 - SOD IS PROPERLY ESTABLISHED.
 - TURF IS FREE OF DEAD SPOTS AND WEEDS.
 - SODDED AREAS HAVE BEEN CUT WITHIN 24 HOURS PRIOR TO ACCEPTANCE INSPECTION.
 - MINIMUM OF 3 WEEKS HAVE ELAPSED FOLLOWING LAYING OF SOD.
 - A MINIMUM OF TWO CUTS HAVE TAKEN PLACE.
 - SODDED AREAS HAVE BEEN TOP-DRESSED, SEEDED AND AERATED.
 - *NOTE REFERS ONLY TO ROW SODDING.
- STREET TREE PLANTING GUIDELINE

NOTE: APPROVED CROSS SECTIONS SHALL TAKE PRECEDENCE

 - 4.5m - STREET LIGHT
 - 2.5m - STREET LIGHT (SMALL TREE <7m MATURE HT.)
 - 3.0m - HYDRO TRANSFORMER
 - 1.5m - PATH, DRIVEWAY, FENCE, SOUND WALL
 - 4.5m - CONCRETE MINIMUM SETBACK FROM CURB
 - 2.5m - FIRE HYDRANTS
 - 1.5m - WATER SERVICE / CURB STOP
 - 1.0m - BELL / CABLE PEDESTALS

TREE PLANTING IN MARINE CLAY SOILS

- THIS LANDSCAPE PLAN CONFORMS WITH THE TREE-TO-FOUNDATION SETBACK, SOIL VOLUME, AND SURFACE-GRADING REQUIREMENTS OUTLINED IN THE CITY OF OTTAWA'S GUIDELINES FOR TREE PLANTING IN SENSITIVE MARINE CLAY SOILS (2017), BASED ON THE FINDINGS OUTLINED IN THE PROJECT GEOTECHNICAL REPORT.
- ADDITIONAL REQUIREMENTS OUTLINED IN THE CITY OF OTTAWA'S GUIDELINES FOR TREE PLANTING IN SENSITIVE MARINE CLAY SOILS (2017), INCLUDING USE DEPTH, FOUNDATION WALL REINFORCEMENT, AND SUBDIVISION GRADING, SHOULD BE CONFIRMED BY THE PROJECT ENGINEER(S).
- THE CONTRACTOR SHOULD REPORT ANY DISCREPANCIES TO THE CONTRACT ADMINISTRATOR BEFORE PLANTING TREES.
- CITY OF OTTAWA: GUIDELINES FOR TREE PLANTING IN SENSITIVE MARINE CLAY SOILS (2017): THE FOLLOWING GUIDELINES ARE PRIMARILY FOCUSED ON SMALL AND MEDIUM SIZE STREET TREES. HOWEVER, LARGE TREES (MATURE HEIGHT OVER 14M) CAN STILL BE PLANTED IN AREAS OF SMC SOILS PROVIDED A TREE TO FOUNDATION SETBACK EQUAL TO THE FULL MATURE HEIGHT OF THE TREE CAN BE PROVIDED (E.G. IN A PARK OR OTHER GREEN SPACE). FOR STREET TREES IN THE ROAD RIGHT-OF-WAY WHERE SMC SOILS HAVE BEEN IDENTIFIED, THE TREE TO FOUNDATION SETBACKS MAY BE REDUCED TO 4.5M FOR SMALL (MATURE TREE HEIGHT UP TO 7.5M) AND MEDIUM SIZE TREES (MATURE TREE HEIGHT 7.5M-14M) PROVIDED ALL OF THE FOLLOWING SIX CONDITIONS ARE MET:

- THE MODIFIED PLASTICITY INDEX OF THE SOIL BETWEEN THE UNDERSIDE OF FOOTING (USF) AND A DEPTH OF 3.5M GENERALLY DOES NOT EXCEED 40%. THIS CORRESPONDS TO SOILS WITH LOW/MEDIUM POTENTIAL FOR SOIL VOLUME CHANGE. CLAY SOILS THAT EXCEED THE 40% PLASTICITY INDEX ARE CONSIDERED TO HAVE HIGH POTENTIAL FOR SOIL VOLUME CHANGE. FOR THESE WORST-CASE SOILS, THE SETBACKS AND TREE PLANTING RESTRICTIONS REMAIN UNCHANGED FROM THE 2005 CLAY SOILS POLICY (TREE SETBACK MUST EQUAL THE MATURE HEIGHT OF THE TREE - I.E. 7.5M SETBACK FOR SMALL TREES).
- THE USF IS 2.1M OR GREATER BELOW THE LOWEST FINISHED GRADE. NOTE: THIS FOOTING LEVEL MUST BE SATISFIED FOR FOOTINGS WITHIN 10M OF THE TREE, AS MEASURED FROM THE CENTRE OF THE TREE TRUNK, AND VERIFIED BY MEANS OF THE GRADING PLAN AS INDICATED IN THE PROCEDURAL CHANGES BELOW.
- A SMALL SIZE TREE MUST BE PROVIDED WITH A MINIMUM OF 25M³ OF AVAILABLE SOIL VOLUME, AS DETERMINED BY A LANDSCAPE ARCHITECT. A MEDIUM SIZE TREE MUST BE PROVIDED WITH A MINIMUM OF 30M³ OF AVAILABLE SOIL VOLUME, AS DETERMINED BY A LANDSCAPE ARCHITECT. THE DEVELOPER WILL ENSURE THE SOIL IS GENERALLY UNCOMPACTED WHEN BACKFILLING IN STREET TREE PLANTING LOCATIONS.

NOTE: THE SOIL VOLUME CALCULATION MUST BE BASED ON A DEPTH OF 1.5M BELOW FINISHED GRADE (E.G. 5M LENGTH X 4M WIDTH AT SURFACE X 1.5M DEPTH = 30M³). IT MAY INCLUDE LANDS IN THE RIGHT-OF-WAY AND ON PRIVATE PROPERTY, BUT MUST SUBTRACT THE VOLUME OF SHALLOW UTILITY TRENCHES (I.E. VOLUME OF SHALLOW UTILITY TRENCHES CANNOT COUNT TOWARDS MINIMUM SOIL VOLUME).
- THE TREE SPECIES MUST BE SMALL TO MEDIUM SIZE, AS CONFIRMED BY A LANDSCAPE ARCHITECT IN THE LANDSCAPE PLAN.
- THE FOUNDATION WALLS ARE TO BE REINFORCED AT LEAST NOMINALLY (MINIMUM OF TWO UPPER AND TWO LOWER 15M BARS IN THE FOUNDATION WALL) TO PROVIDE DUCTILITY AS DESCRIBED IN THE GEOTECHNICAL REPORT.
- GRADING SURROUNDING THE TREE MUST PROMOTE DRAINING TO THE TREE ROOT ZONE (IN SUCH A MANNER AS NOT TO BE DETRIMENTAL TO THE TREE), AS NOTED ON THE SUBDIVISION GRADING PLAN.

PLANT LIST A - ROW STREET TREES

| KEY | QTY. | BOTANICAL NAME | COMMON NAME | CAL/HT. (mm) | ROOT |
|--|------|------------------------|------------------|--------------|------|
| SMALL DECIDUOUS STREET TREES (6-8m) | | | | | |
| AC | 2 | AMELANCHIER CANADENSIS | SERVICEBERRY | 70 | B&B |
| MEDIUM DECIDUOUS TREES (10-15m) | | | | | |
| CO | 7 | CELTIS OCCIDENTALIS | HACKBERRY | 70 | B&B |
| PC | 9 | PIRUS CALLERTIANA | ORNAMENTAL PEAR | 70 | B&B |
| SR | 5 | SYRINGA RETICULATA | JAPANESE LILAC | 70 | B&B |
| TM | 5 | TILIA MONGOLICA | MONGOLIAN LINDEN | 70 | B&B |

PLANT LIST B - BLOCK 4 PLANTING

| KEY | QTY. | BOTANICAL NAME | COMMON NAME | CAL/HT. (mm) | ROOT | SPREAD(m) | HEIGHT(m) |
|--|------|---|-------------------------------|--------------|----------|-----------|-----------|
| MEDIUM DECIDUOUS TREES (10-15m) | | | | | | | |
| SR | 1 | SYRINGA RETICULATA | JAPANESE LILAC | 70 | B&B | | |
| TM | 3 | TILIA MONGOLICA | MONGOLIAN LINDEN | 70 | B&B | | |
| LARGE DECIDUOUS TREES | | | | | | | |
| AR | 2 | ACER RUBRUM | RED MAPLE | 70 | B&B | | |
| TREE FORM SHRUBS | | | | | | | |
| AI | 25 | AMELANCHIER LAEVIS | ALLEGHENY SERVICEBERRY | 40 | B&B | 6 | 6 |
| Ea | 14 | EUCONYMUS ALATUS | BURNING BUSH | 125cm | TOPGRAFT | 6 | 10 |
| Hg | 23 | HYDRANGEA PANICULATA 'GRANDIFLORA' | PEE GEE HYDRANGEA | 40 | B&B | 5 | 8 |
| DECIDUOUS SHRUBS | | | | | | | |
| CI | 88 | CORNUS SERICEA 'FARROW' | ARCTIC FIRE DOGWOOD | | | 3 | GAL. |
| Ef | 44 | EUCONYMUS ALATUS 'FIREBALL' | FIREBALL BURNING BUSH | | | 3 | GAL. |
| Fo | 56 | FORSYTHIA OVATA 'NORTHERN GOLD' | NORTHERN GOLD FORSYTHIA | | | 3 | GAL. |
| Sm | 56 | SYRINGA MEYERI 'PALIBIN' | DWARF KOREAN LILAC | | | 3 | GAL. |
| CONIFEROUS SHRUBS | | | | | | | |
| Ja | 60 | JUNIPERUS SABINA | SABINA JUNIPER | | | 3 | GAL. |
| Js | 32 | JUNIPERUS SCOPULORUM 'SKYROCKET' | SKYROCKET JUNIPER | | | 200cm | WB. |
| GRASSES | | | | | | | |
| ca | 399 | CALAMAGROSTIS ACUTIFLORA 'LIGHTNING STRIKE' | VARIEGATED FEATHER REED GRASS | | | 1 | GAL. |
| mg | 225 | MISCANTHUS SINENSIS 'HURON BLUSH' | HURON BLUSH MAIDEN GRASS | | | 1 | GAL. |

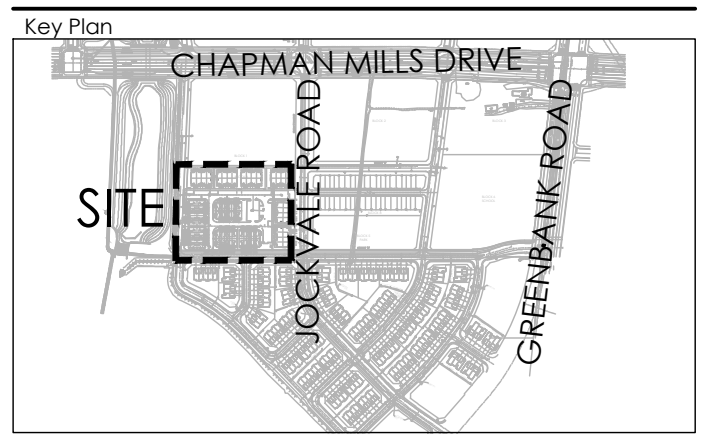
PLANT LIST C - AMENITY AREA PLANTING

| KEY | QTY. | BOTANICAL NAME | COMMON NAME | CAL (mm) | ROOT | SPREAD(m) | HEIGHT(m) |
|-------------------------|------|------------------------------------|--------------------------|----------|------|-----------|-----------|
| TREE FORM SHRUBS | | | | | | | |
| AI | 7 | AMELANCHIER LAEVIS | ALLEGHENY SERVICEBERRY | 40 | B&B | 6 | 6 |
| Hg | 7 | HYDRANGEA PANICULATA 'GRANDIFLORA' | PEE GEE HYDRANGEA | 40 | B&B | 5 | 8 |
| DECIDUOUS SHRUBS | | | | | | | |
| Cx | 12 | CORNUS SERICEA 'KELSEY' | KELSEY RED OSIER DOGWOOD | | | 3 | GAL. |
| GRASSES | | | | | | | |
| sz | 20 | SCHIZACHYRIUM SCOPARIUM | LITTLE BLUESTEM | | PT | 0.4 | 1 |

SITE INFORMATION

| | |
|------------------------|---|
| SITE PLAN | PROVIDED BY KORSIAR URBAN PLANNING DATED MARCH 19, 2020 |
| COMPOSITE UTILITY PLAN | CUP PROVIDED BY STANTEC/PROJ. NO. 160401085/DATED APRIL 2020 |
| GEOTECHNICAL STUDY | GEOTECHNICAL INVESTIGATION REPORT PROPOSED RESIDENTIAL DEVELOPMENT 3288 GREENBANK ROAD BY PATERSON GROUP REPORT NO.PG2743-2 DATED MARCH 6, 2019 |
| CITY FILE NUMBER | D07-16-19-0015 |

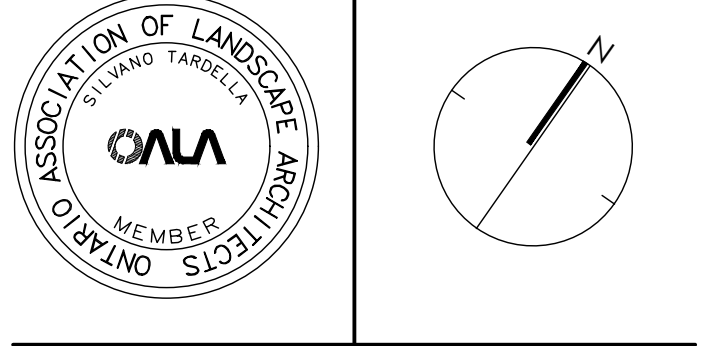
Contractor shall check all dimensions on the work and report any discrepancy to the Landscape Architect before proceeding. All drawings and specifications are the property of the Landscape Architect and must be returned at the completion of the work. This drawing is not to be used for construction until signed by the Landscape Architect.



LEGEND

- PROPERTY LINE
- LIMIT OF WORK
- FENCING
 - GARBAGE ENCLOSURE GATE
 - 2.0M HIGH OPAQUE SCREEN
- PLANTING
 - LARGE DECIDUOUS TREE (>14m)
 - MEDIUM DECIDUOUS TREE (<14m)
 - ORNAMENTAL / SMALL TREE (<7m)
 - SHRUB (TREE FORM)
 - DECIDUOUS SHRUB
 - CONIFEROUS SHRUB
 - ORNAMENTAL GRASSES
 - SODDING
- SURFACING
 - CONCRETE SIDEWALK
 - ASPHALT PAVING
 - CONCRETE PAVING
 - UNIT PAVING - WALKWAYS
 - UNIT PAVING - MULTI-USE PATHWAY - DRIVEWAY BAND
- SITE FURNISHINGS
 - BIKE RACK
 - BENCH
 - PLANTER
- DETAIL KEY
 - DETAIL NO.
 - SHEET NO.
- PLANTING KEY
 - TREE SPECIES
 - SHRUB SPECIES
 - QUANTITY

| | | |
|----------|-----------------------------|-----------|
| 1 | Issued for First Submission | Apr.21/20 |
| No. | Description | Date |
| Revision | | |

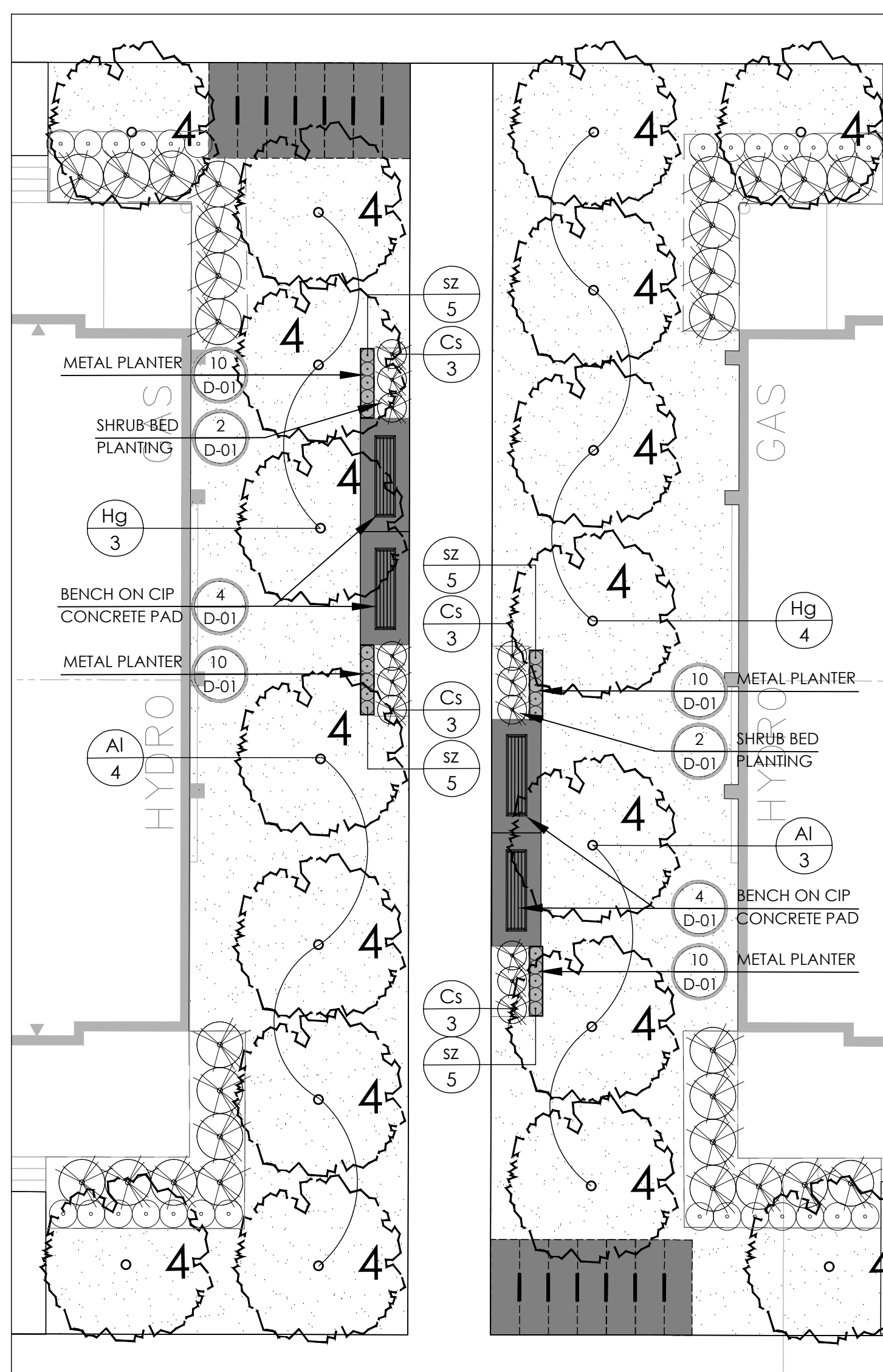
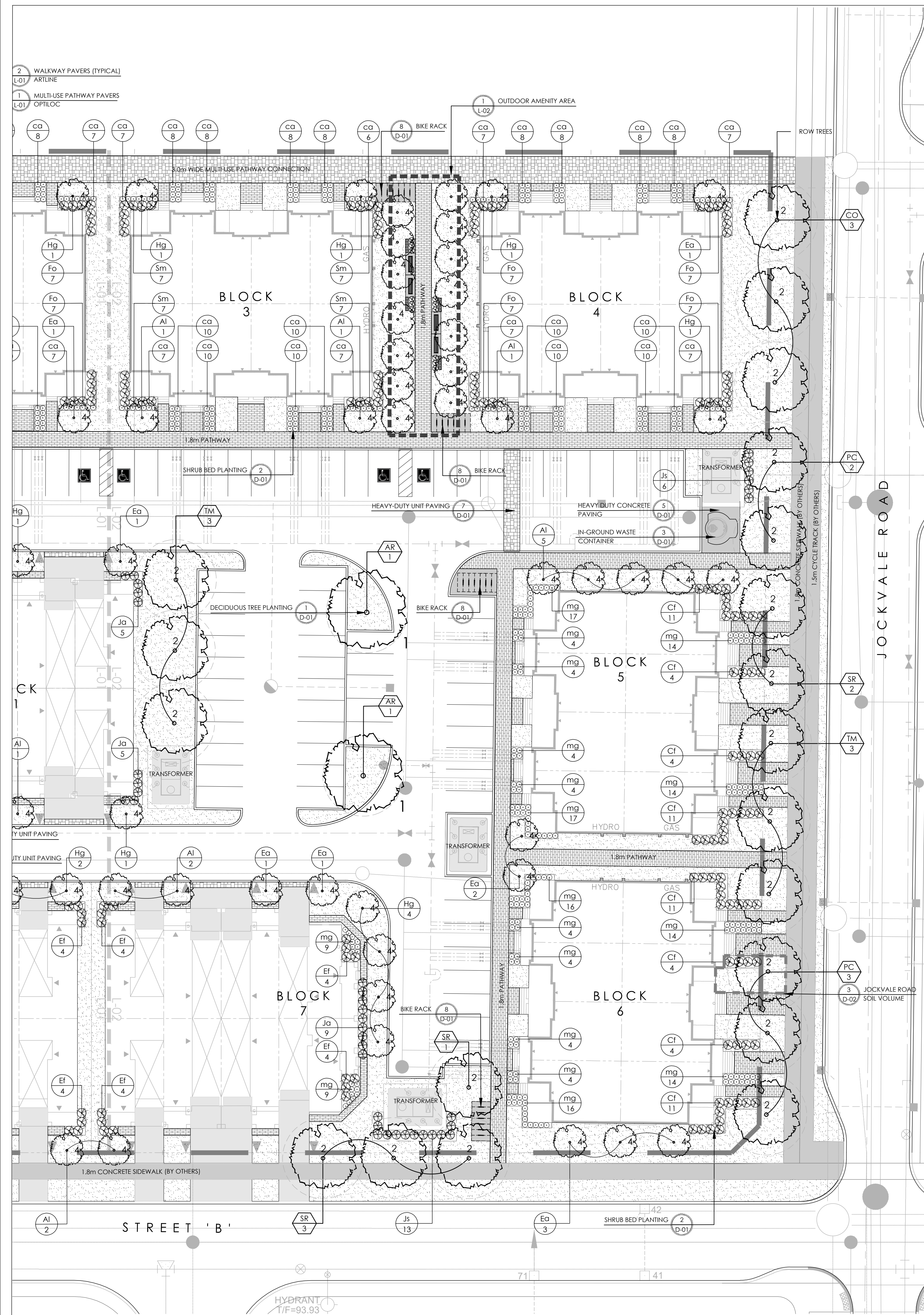


NAK design strategies
1285 WELINGTON STREET WEST, OTTAWA, ON K1Y 3A8 CANADA
T 613.237.2345 F 613.237.6423 NAKDESIGNSTRATEGIES.COM

BLOCK 4 SOUTH NEPEAN TOWN CENTRE

LANDSCAPE PLAN

| | | | |
|-------|----------|---------|--------|
| Date | Apr 2020 | Sheet | L-01 |
| Scale | 1:250 | Checked | DE, JH |
| Drawn | TM | Job No. | 19-282 |



GENERAL NOTES:

- ACER RUBRUM AND CELTIS OCCIDENTALS TO BE SPRING DUG SPECIMENS AND PLANTED IN THE SPRING ONLY.
- THE LOCATION OF THE TREES SHOWN ON THIS PLAN IS APPROXIMATE AND SHALL NOT BE SCALED FROM THIS DRAWING. THIS PLAN MUST BE READ IN CONJUNCTION WITH THE APPROVED CLIP AND CITY CROSS SECTIONS.
- CONTRACTOR SHALL ENSURE THAT ALL UTILITY LOCATIONS ARE OBTAINED PRIOR TO ANY EXCAVATION FOR LANDSCAPING.
- LOCATION OF ALL PLANT MATERIALS TO BE STAKED BY THE CONTRACTOR AND VERIFIED IN THE FIELD BY LANDSCAPE ARCHITECT & CITY OF OTTAWA PRIOR TO THE EXCAVATION OF FITS.
- ALL PLANT MATERIAL SHALL BE NURSERY GROWN STOCK UNLESS OTHERWISE NOTED.
- TREES TO HAVE A MINIMUM 1800mm CLEAR STEM ABOVE GRADE.
- PLACE SOD ON A MINIMUM 150mm TOPSOIL.
- CONTRACTOR TO MAKE GOOD ALL EXISTING AREAS DAMAGED BY HIS WORK TO THE SATISFACTION OF THE CITY OF OTTAWA.
- THE CITY WILL BE NOTIFIED IF ANY TREES CANNOT BE LOCATED OR PLANTED DUE TO CONFLICTS WITH UTILITIES OR DRIVEWAYS. THE REQUIRED TREES NOT PLANTED ARE SUBJECT TO TREE BANKING. THE FINAL NUMBER OF TREES TO BE BANKED WILL BE PROVIDED TO THE CITY FOLLOWING ALL PLANTINGS (REFERS TO ROW TREES ONLY).
- ALL PLANT MATERIAL SHALL BE WARRANTED FOR TWO YEARS FROM THE DATE OF PERFORMANCE ACCEPTANCE AS DETERMINED BY THE CITY OF OTTAWA.
- PERIODIC REVIEWS OF PLANTING SHALL BE CARRIED OUT BY THE LANDSCAPE ARCHITECT.
- PLANTINGS TO BE STAKED FOR APPROVAL PRIOR TO CONSTRUCTION
- CITY GRASS CUTTING RESPONSIBILITIES FOR SODDED AREAS SHALL BEGIN FOLLOWING PERFORMANCE ACCEPTANCE INSPECTION BY THE LANDSCAPE ARCHITECT AND THE CITY. ACCEPTANCE WILL BE PROVIDED ONLY IF:
 - SOD IS PROPERLY ESTABLISHED.
 - TURF IS FREE OF DEAD SPOTS AND WEEDS.
 - SODDED AREAS HAVE BEEN CUT WITHIN 24 HOURS PRIOR TO ACCEPTANCE INSPECTION.
 - MINIMUM OF 3 WEEKS HAVE ELAPSED FOLLOWING LAYING OF SOD.
 - A MINIMUM OF TWO CUTS HAVE TAKEN PLACE.
 - SODDED AREAS HAVE BEEN TOP-DRESSED, SEEDED AND AERATED
 *NOTE REFERS ONLY TO ROW SODDING
- STREET TREE PLANTING GUIDELINE
NOTE: APPROVED CROSS SECTIONS SHALL TAKE PRECEDENCE
4.5m - STREET LIGHT
2.5m - STREET LIGHT (SMALL TREE <7m MATURE HT.)
3.0m - HYDRO TRANSFORMER
1.5m - PATH, DRIVEWAY, FENCE, SOUND WALL
4.5m - CONIFERS MINIMUM SETBACK FROM CURB
2.5m - FIRE HYDRANTS
1.5m - WATER SERVICE / CURB STOP
1.0m - BELL / CABLE PEDESTALS

TREE PLANTING IN MARINE CLAY SOILS

- THIS LANDSCAPE PLAN CONFORMS WITH THE TREE-TO-FOUNDATION SETBACK, SOIL VOLUME, AND SURFACE GRADING REQUIREMENTS OUTLINED IN THE CITY OF OTTAWA'S GUIDELINES FOR TREE PLANTING IN SENSITIVE MARINE CLAY SOILS (2017), BASED ON THE FINDINGS OUTLINED IN THE PROJECT GEOTECHNICAL REPORT.
- ADDITIONAL REQUIREMENTS OUTLINED IN THE CITY OF OTTAWA'S GUIDELINES FOR TREE PLANTING IN SENSITIVE MARINE CLAY SOILS (2017), INCLUDING USE DEPTH, FOUNDATION WALL REINFORCEMENT, AND SUBDIVISION GRADING, SHOULD BE CONFIRMED BY THE PROJECT ENGINEER(S).
- THE CONTRACTOR SHOULD REPORT ANY DISCREPANCIES TO THE CONTRACT ADMINISTRATOR BEFORE PLANTING TREES.
- CITY OF OTTAWA GUIDELINES FOR TREE PLANTING IN SENSITIVE MARINE CLAY SOILS (2017): THE FOLLOWING GUIDELINES ARE PRIMARILY FOCUSED ON SMALL AND MEDIUM SIZE STREET TREES. HOWEVER, LARGE TREES (MATURE HEIGHT OVER 14M) CAN STILL BE PLANTED IN AREAS OF SMC PROVIDED A TREE TO FOUNDATION SETBACK EQUAL TO THE FULL MATURE HEIGHT OF THE TREE CAN BE PROVIDED (E.G. IN A PARK OR OTHER GREEN SPACE). FOR STREET TREES IN THE ROAD RIGHT-OF-WAY WHERE SMC SOILS HAVE BEEN IDENTIFIED, THE TREE TO FOUNDATION SETBACKS MAY BE REDUCED TO 4.5M FOR SMALL (MATURE TREE HEIGHT UP TO 7.5M) AND MEDIUM SIZE TREES (MATURE TREE HEIGHT 7.5M-14M) PROVIDED ALL OF THE FOLLOWING SIX CONDITIONS ARE MET:

- THE MODIFIED PLASTICITY INDEX OF THE SOIL BETWEEN THE UNDERSIDE OF FOOTING (USF) AND A DEPTH OF 3.5M GENERALLY DOES NOT EXCEED 40%. THIS CORRESPONDS TO SOILS WITH LOW/MEDIUM POTENTIAL FOR SOIL VOLUME CHANGE. CLAY SOILS THAT EXCEED THE 40% PLASTICITY INDEX ARE CONSIDERED TO HAVE HIGH POTENTIAL FOR SOIL VOLUME CHANGE. FOR THESE WORST-CASE SOILS, THE SETBACKS AND TREE PLANTING RESTRICTIONS REMAIN UNCHANGED FROM THE 2005 CLAY SOILS POLICY (TREE SETBACK MUST EQUAL THE MATURE HEIGHT OF THE TREE - I.E. 7.5M SETBACK FOR SMALL TREES).
- THE USF IS 2.1M OR GREATER BELOW THE LOWEST FINISHED GRADE. NOTE: THIS FOOTING LEVEL MUST BE SATISFIED FOR FOOTINGS WITHIN 10M OF THE TREE, AS MEASURED FROM THE CENTRE OF THE TREE TRUNK, AND VERIFIED BY MEANS OF THE GRADING PLAN AS INDICATED IN THE PROCEDURAL CHANGES BELOW.
- A SMALL SIZE TREE MUST BE PROVIDED WITH A MINIMUM OF 25% OF AVAILABLE SOIL VOLUME. AS DETERMINED BY A LANDSCAPE ARCHITECT, A MEDIUM SIZE TREE MUST BE PROVIDED WITH A MINIMUM OF 30% OF AVAILABLE SOIL VOLUME. AS DETERMINED BY A LANDSCAPE ARCHITECT. THE DEVELOPER WILL ENSURE THE SOIL IS GENERALLY UNCOMPACTED WHEN BACKFILLING IN STREET TREE PLANTING LOCATIONS.
NOTE: THE SOIL VOLUME CALCULATION MUST BE BASED ON A DEPTH OF 1.5M BELOW FINISHED GRADE (E.G. 5M LENGTH X 4M WIDTH AT SURFACE X 1.5M DEPTH = 30M³). IT MAY INCLUDE LANDS IN THE RIGHT-OF-WAY AND ON PRIVATE PROPERTY, BUT MUST SUBTRACT THE VOLUME OF SHALLOW UTILITY TRENCHES (I.E. VOLUME OF SHALLOW UTILITY TRENCHES CANNOT COUNT TOWARDS MINIMUM SOIL VOLUME).
- THE TREE SPECIES MUST BE SMALL TO MEDIUM SIZE, AS CONFIRMED BY A LANDSCAPE ARCHITECT IN THE LANDSCAPE PLAN.
- THE FOUNDATION WALLS ARE TO BE REINFORCED AT LEAST NOMINALLY (MINIMUM OF TWO UPPER AND TWO LOWER 15M BARS IN THE FOUNDATION WALL) TO PROVIDE DUCTILITY AS DESCRIBED IN THE GEOTECHNICAL REPORT.
- GRADING SURROUNDING THE TREE MUST PROMOTE DRAINING TO THE TREE ROOT ZONE (IN SUCH A MANNER AS NOT TO BE DETRIMENTAL TO THE TREE), AS NOTED ON THE SUBDIVISION GRADING PLAN.

PLANT LIST A - ROW STREET TREES

| KEY | QTY. | BOTANICAL NAME | COMMON NAME | CAL/HT. (mm) | ROOT (mm) |
|--|------|------------------------|------------------|--------------|-----------|
| SMALL DECIDUOUS STREET TREES (6-8m) | | | | | |
| AC | 2 | AMELANCHIER CANADENSIS | SERVICEBERRY | 70 | 8&8 |
| MEDIUM DECIDUOUS TREES (10-15m) | | | | | |
| CO | 7 | CELTIS OCCIDENTALS | HACKBERRY | 70 | 8&8 |
| PC | 9 | PYRUS CALLERYANA | ORNAMENTAL PEAR | 70 | 8&8 |
| SR | 5 | SYRINGA RETICULATA | JAPANESE LILAC | 70 | 8&8 |
| TM | 5 | TILIA MONGOLICA | MONGOLIAN LINDEN | 70 | 8&8 |

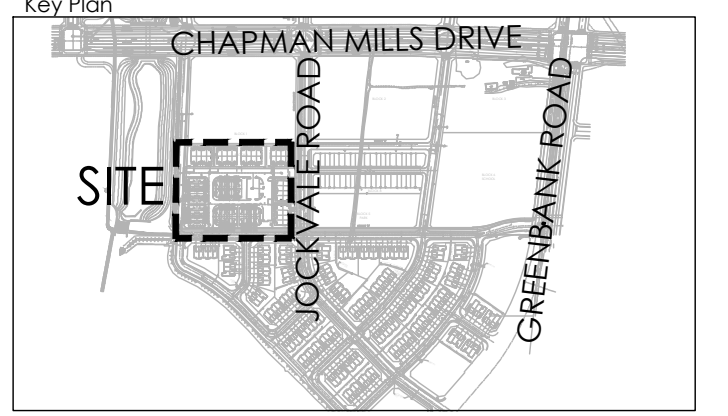
PLANT LIST B - BLOCK 4 PLANTING

| KEY | QTY. | BOTANICAL NAME | COMMON NAME | CAL/HT. (mm) | ROOT (mm) | SPREAD(m) | HEIGHT(m) |
|--|------|---|-------------------------------|--------------|-----------|-----------|-----------|
| MEDIUM DECIDUOUS TREES (10-15m) | | | | | | | |
| SR | 1 | SYRINGA RETICULATA | JAPANESE LILAC | 70 | 8&8 | | |
| TM | 3 | TILIA MONGOLICA | MONGOLIAN LINDEN | 70 | 8&8 | | |
| LARGE DECIDUOUS TREES | | | | | | | |
| AR | 2 | ACER RUBRUM | RED MAPLE | 70 | 8&8 | | |
| TREE FORM SHRUBS | | | | | | | |
| Al | 25 | AMELANCHIER LAEVIS | ALLEGHENY SERVICEBERRY | 40 | 8&8 | 6 | 6 |
| Ea | 14 | EUONYMUS ALATUS | BURNING BUSH | 125cm | TOPGRAFT | 6 | 10 |
| Hg | 23 | HYDRANGEA PANICULATA 'GRANDIFLORA' | PEE-GEE HYDRANGEA | 40 | 8&8 | 5 | 8 |
| DECIDUOUS SHRUBS | | | | | | | |
| Cf | 88 | CORNUS SERICEA 'FARROW' | ARCTIC FIRE DOGWOOD | | | 3 | GAL. |
| Ef | 64 | EUONYMUS ALATUS 'FIREBALL' | FIREBALL BURNING BUSH | | | 3 | GAL. |
| Fo | 54 | FORSYTHIA KYATA 'NORTHERN GOLD' | NORTHERN GOLD FORSYTHIA | | | 3 | GAL. |
| Sm | 56 | SYRINGA MEYER 'PALIBIN' | DWARF KOREAN LILAC | | | | |
| CONIFEROUS SHRUBS | | | | | | | |
| Ja | 60 | JUNIPERUS SABINA | SABINA JUNIPER | | | 3 | GAL. |
| Js | 32 | JUNIPERUS SCOPULORUM 'SKYROCKET' | SKYROCKET JUNIPER | 200cm | WB. | | |
| GRASSES | | | | | | | |
| ca | 399 | CALAMAGROSTIS ACUTIFLORA 'LIGHTNING STRIKE' | VARIEGATED FEATHER REED GRASS | | | 1 | GAL. |
| mg | 225 | MISCANTHUS SINENSIS 'HURON BLUSH' | HURON BLUSH MAIDEN GRASS | | | 1 | GAL. |

PLANT LIST C - AMENITY AREA PLANTING

| KEY | QTY. | BOTANICAL NAME | COMMON NAME | CAL (mm) | ROOT (mm) | SPREAD(m) | HEIGHT(m) |
|-------------------------|------|------------------------------------|--------------------------|----------|-----------|-----------|-----------|
| TREE FORM SHRUBS | | | | | | | |
| Al | 7 | AMELANCHIER LAEVIS | ALLEGHENY SERVICEBERRY | 40 | 8&8 | 6 | 6 |
| Hg | 7 | HYDRANGEA PANICULATA 'GRANDIFLORA' | PEE-GEE HYDRANGEA | 40 | 8&8 | 5 | 8 |
| DECIDUOUS SHRUBS | | | | | | | |
| Cs | 12 | CORNUS SERICEA 'KELSEY' | KELSEY RED OSIER DOGWOOD | | | 3 | GAL. |
| GRASSES | | | | | | | |
| sz | 20 | SCHIZACHYRIUM SCOPARIUM | LITTLE BLUESTEM | | | 1 | GAL. |

Contractor shall check all dimensions on the work and report any discrepancy to the Landscape Architect before proceeding. All drawings and specifications are the property of the Landscape Architect and must be returned at the completion of the work. This drawing is not to be used for construction until signed by the Landscape Architect.

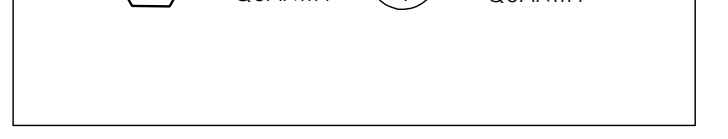
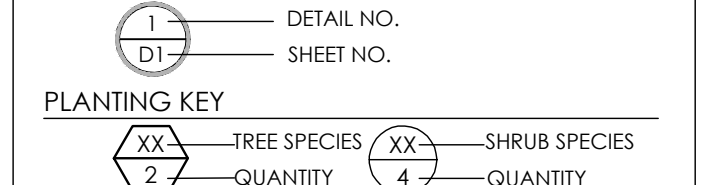
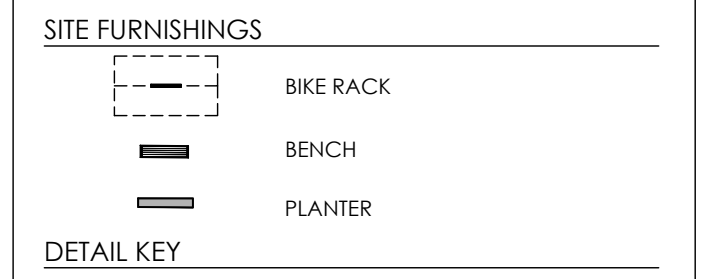
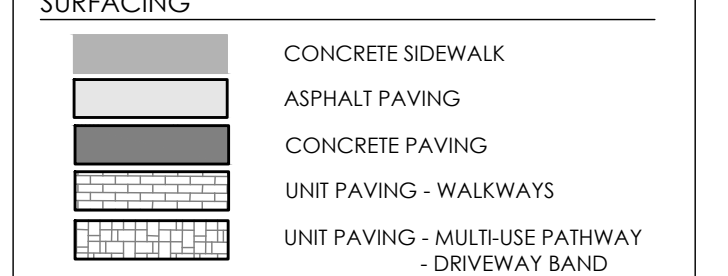
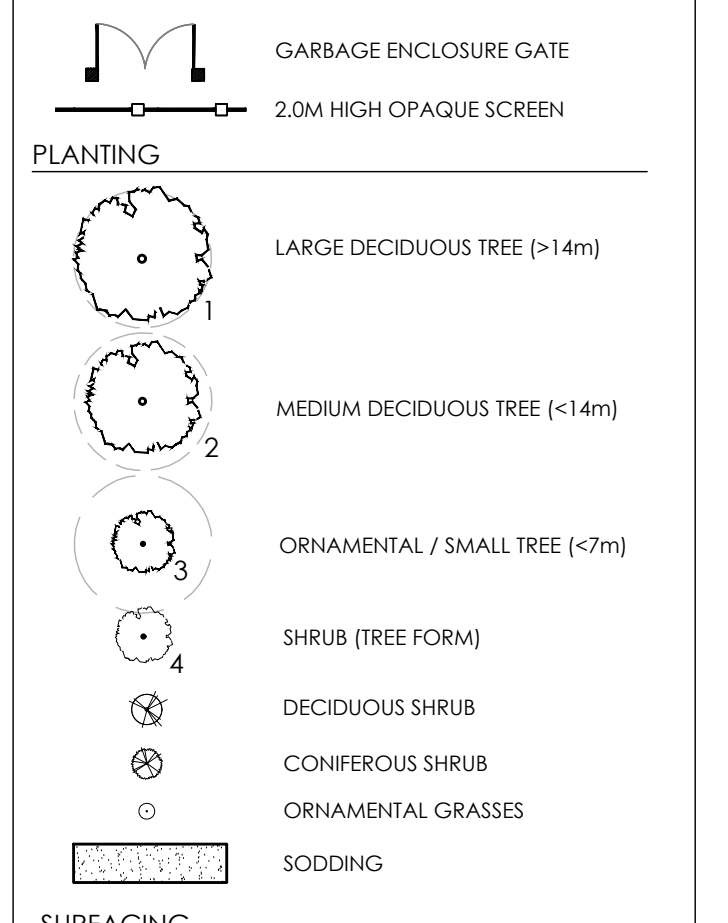


LEGEND

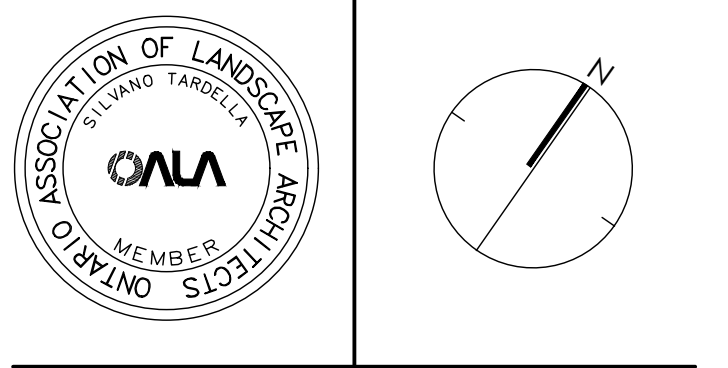
PROPERTY LINE
LIMIT OF WORK

FENCING

GARBAGE ENCLOSURE GATE
2.0M HIGH OPAQUE SCREEN



| No. | Description | Date |
|----------|-----------------------------|------------|
| 1 | Issued for First Submission | Apr. 21/20 |
| Revision | | |



NAK
design strategies
1285 WELINGTON STREET WEST, OTTAWA, ON K1Y 3A8 CANADA
T 613.237.2345 F 613.237.6423 NAKDESIGNSTRATEGIES.COM

**BLOCK 4
SOUTH NEPEAN TOWN CENTRE**

Title
LANDSCAPE PLAN

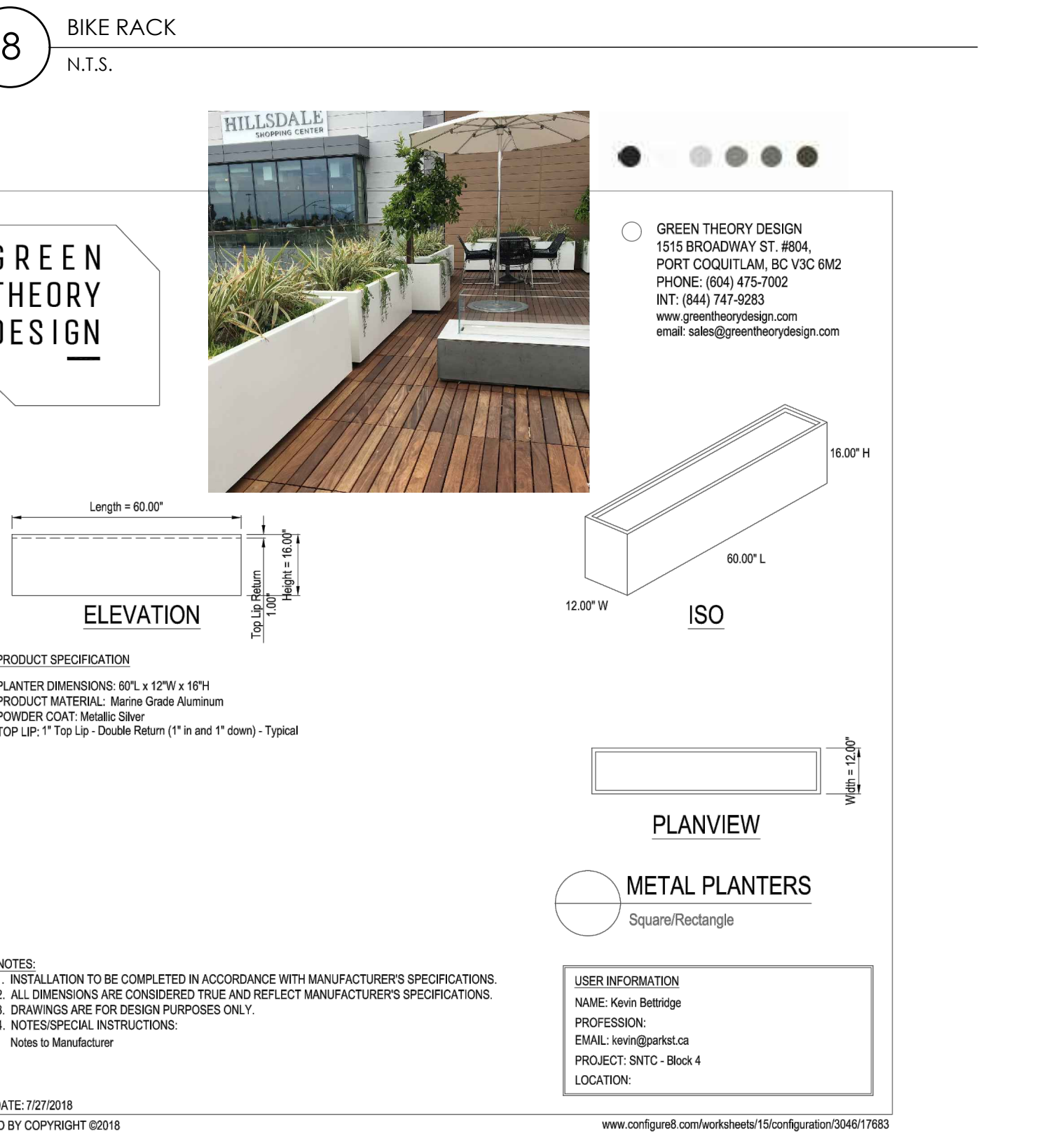
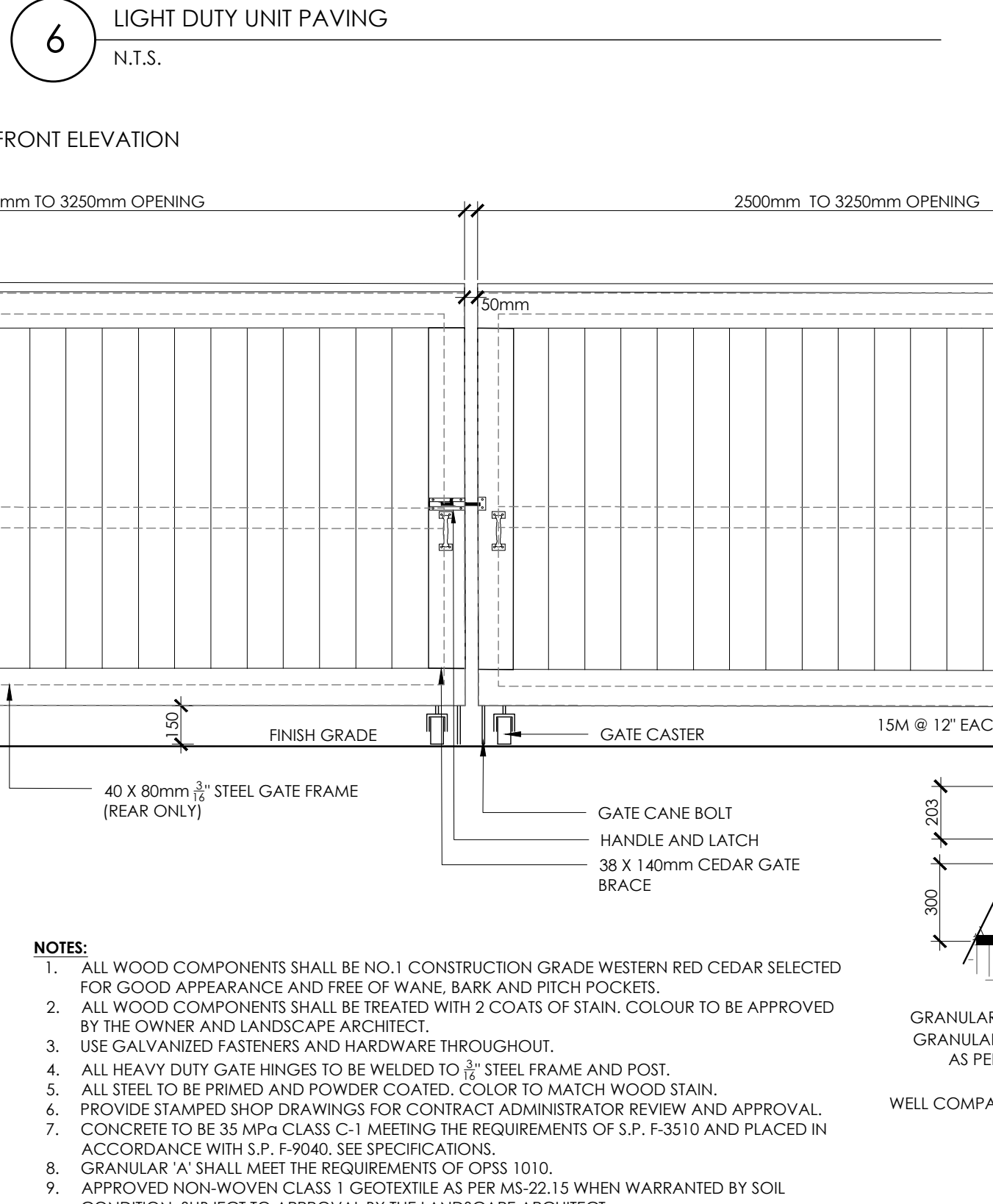
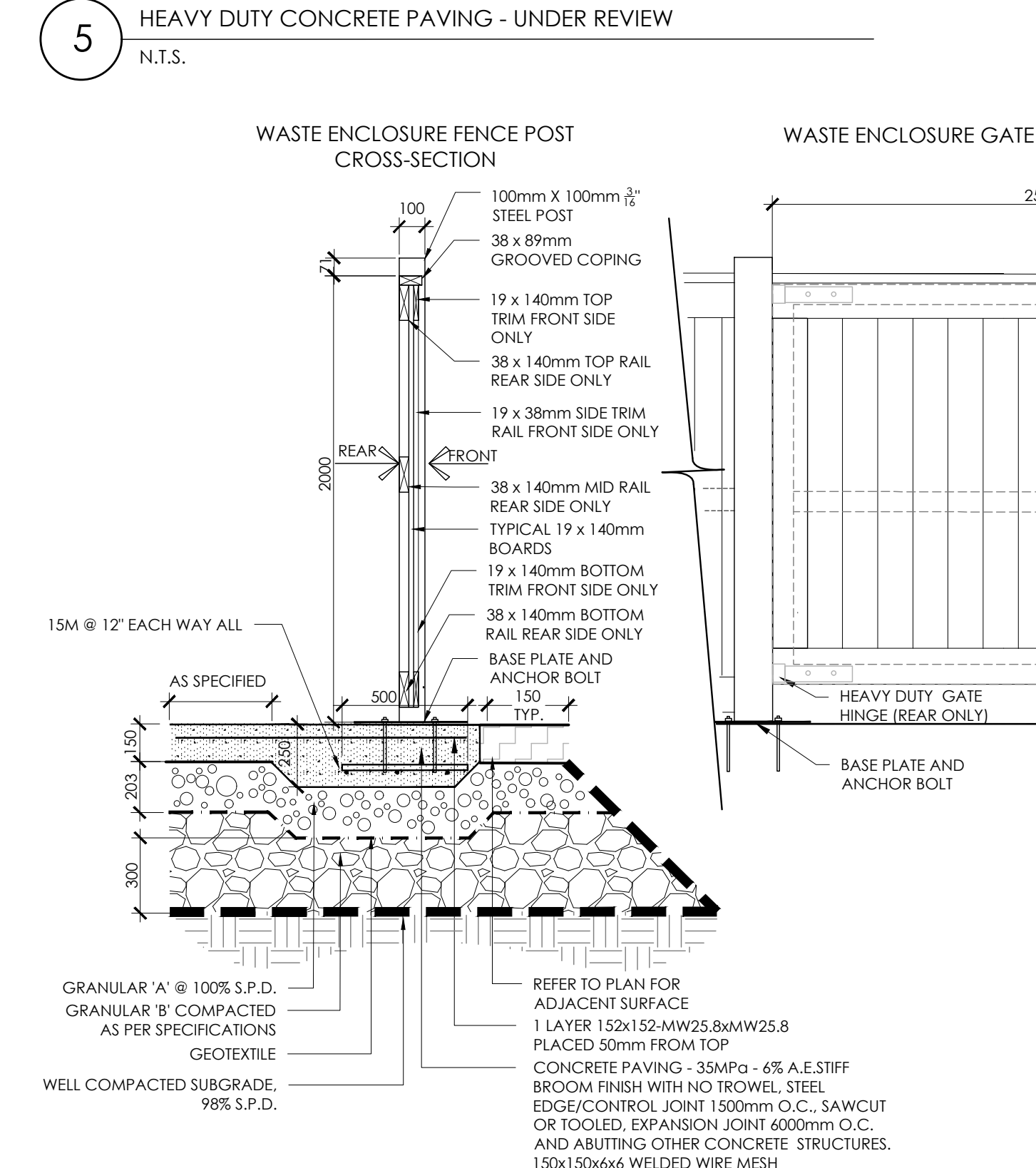
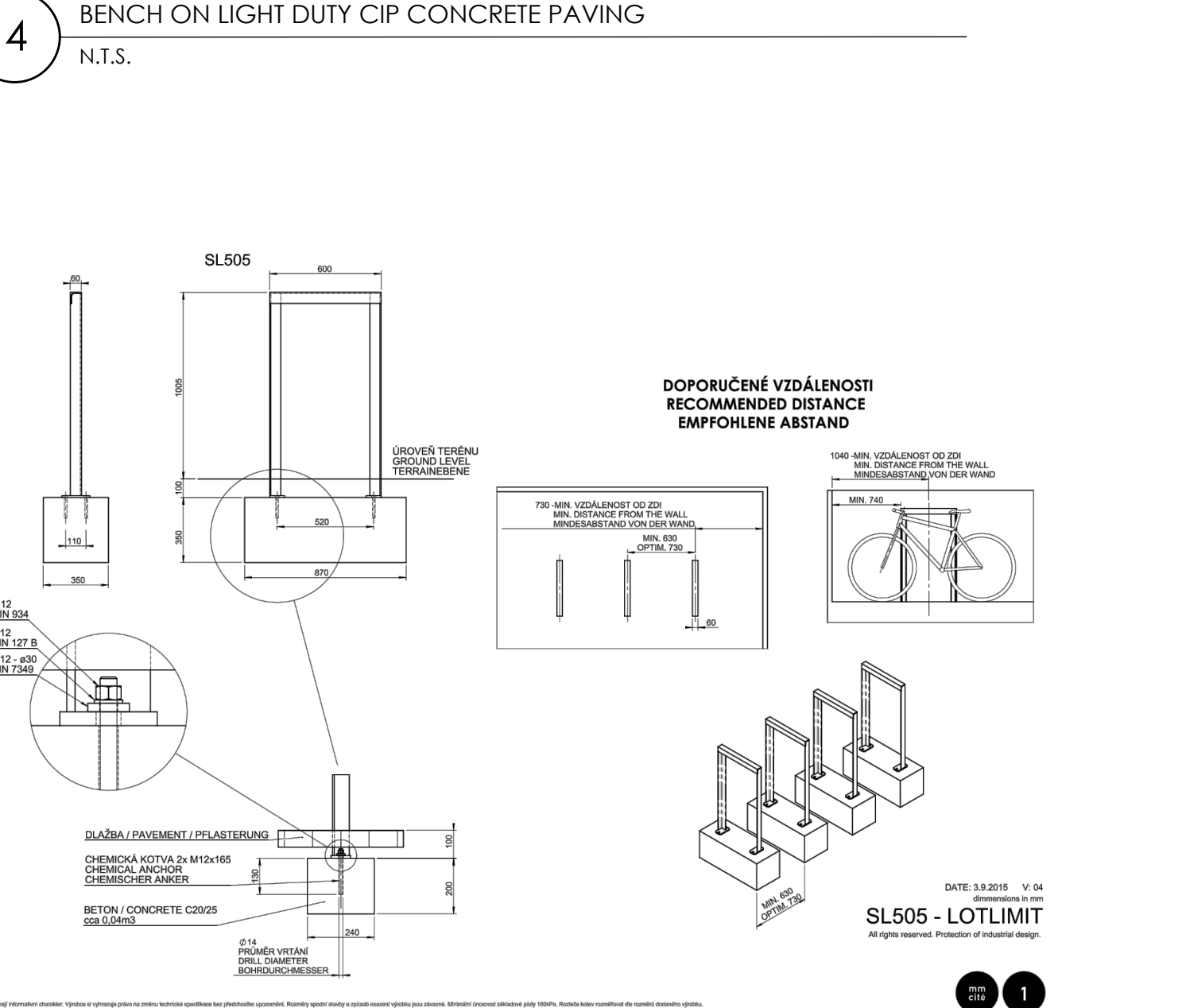
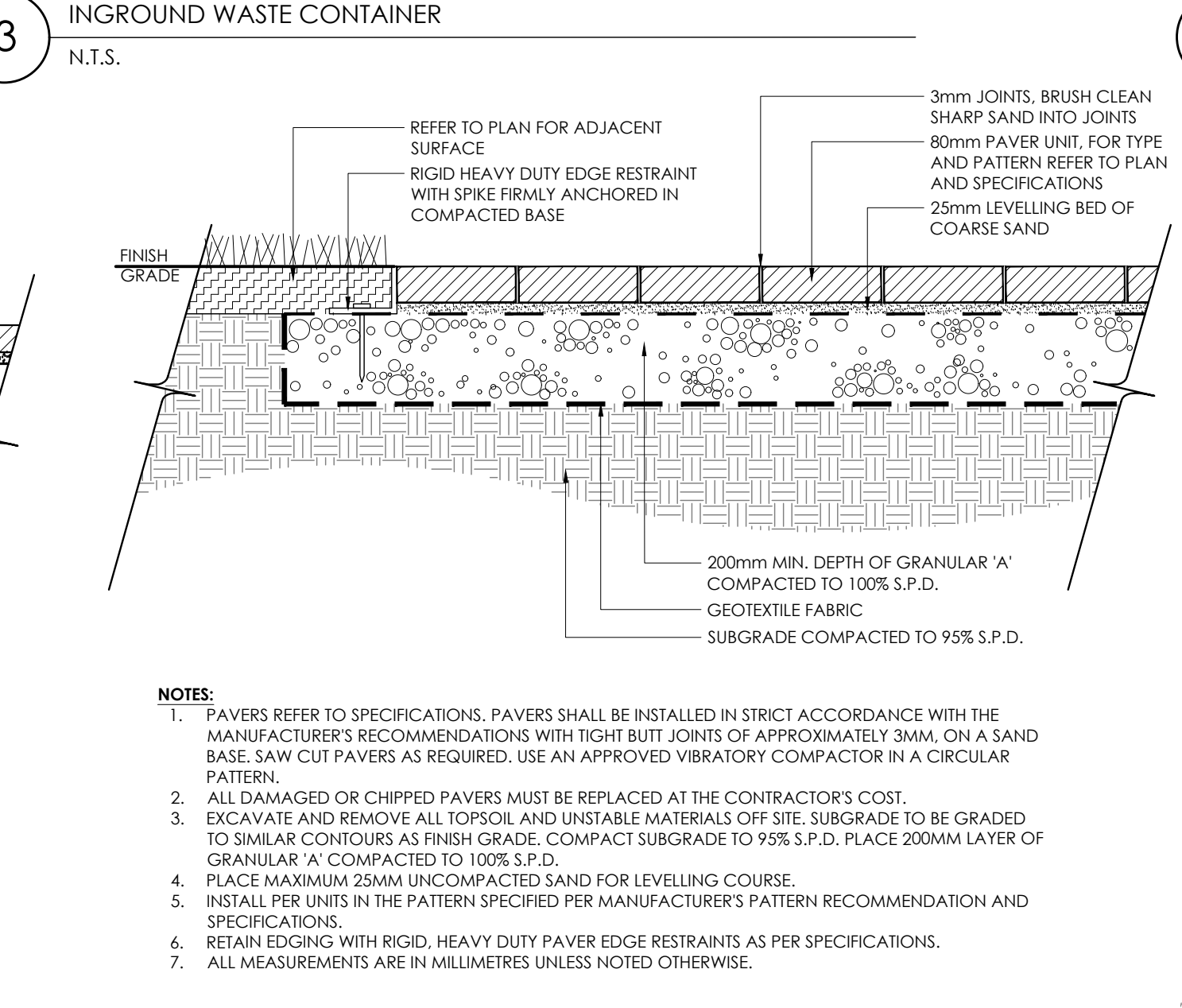
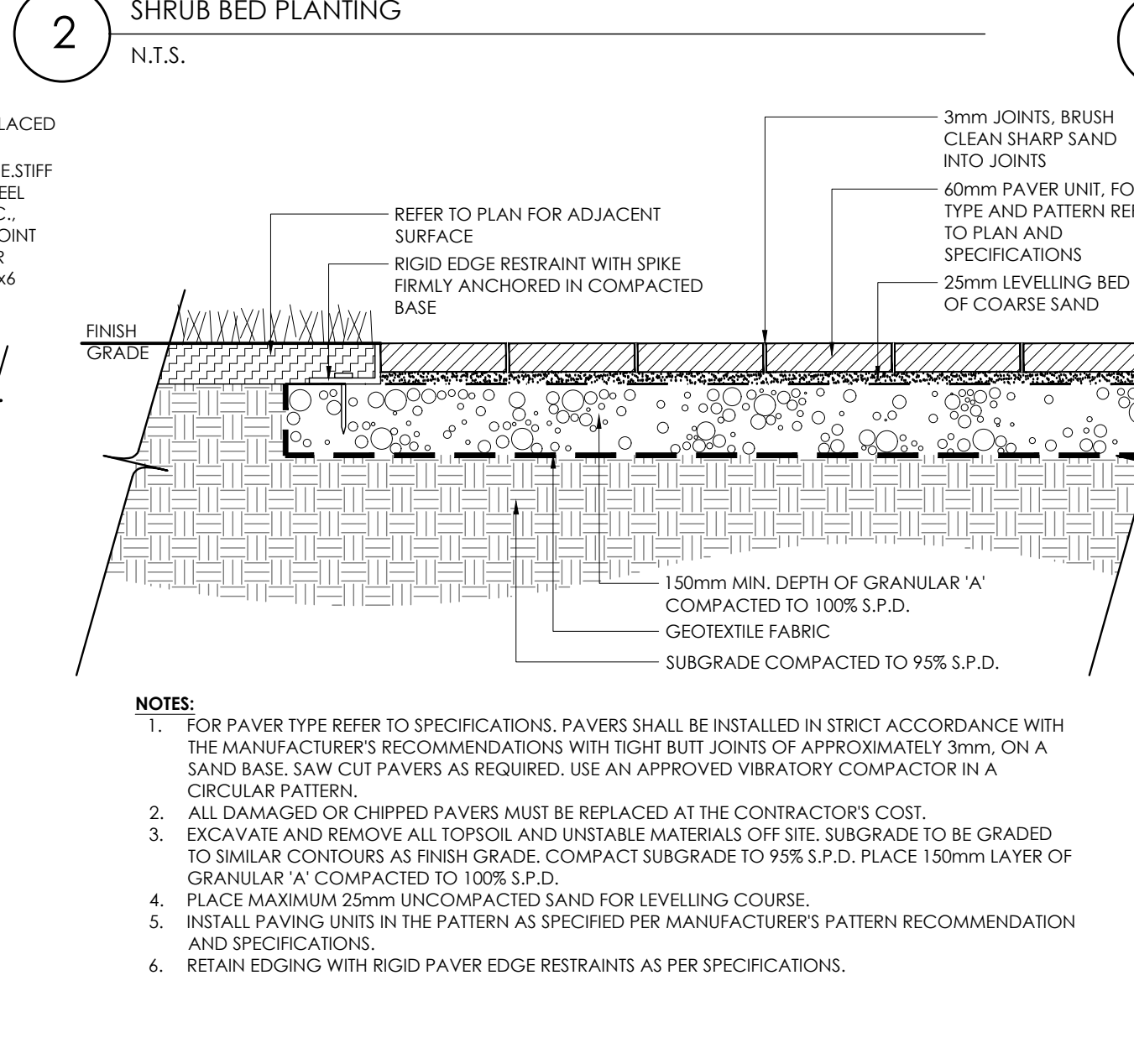
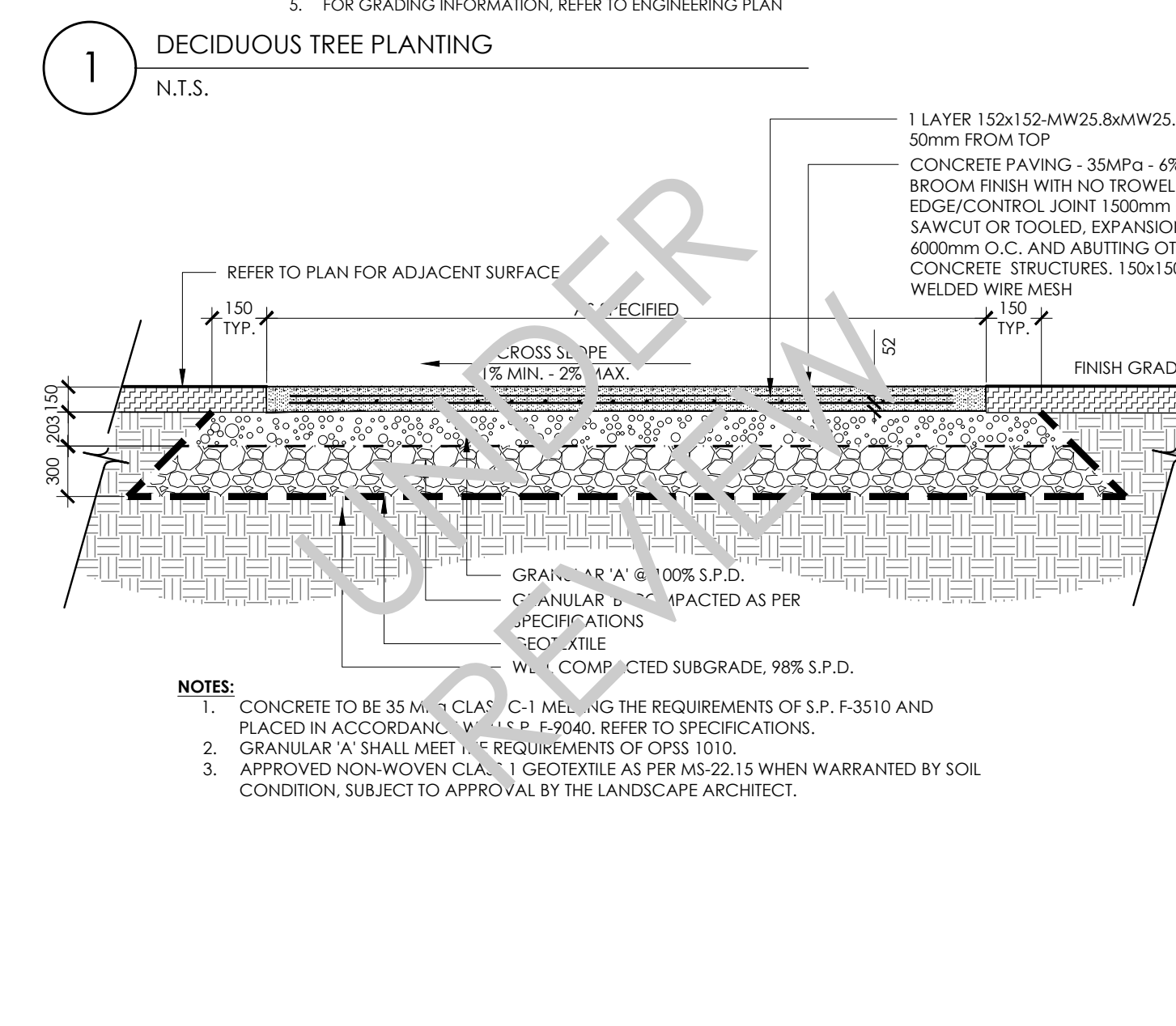
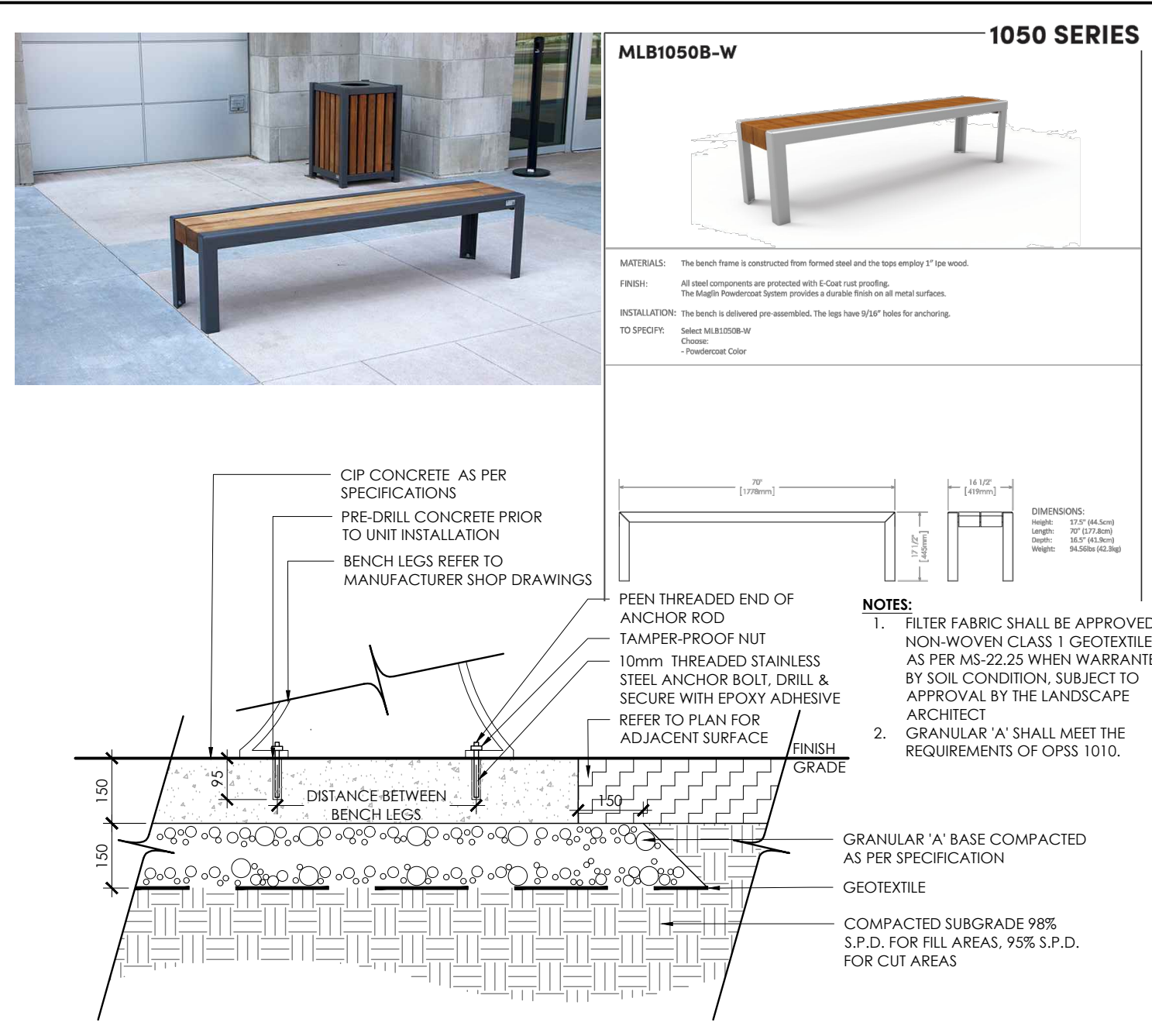
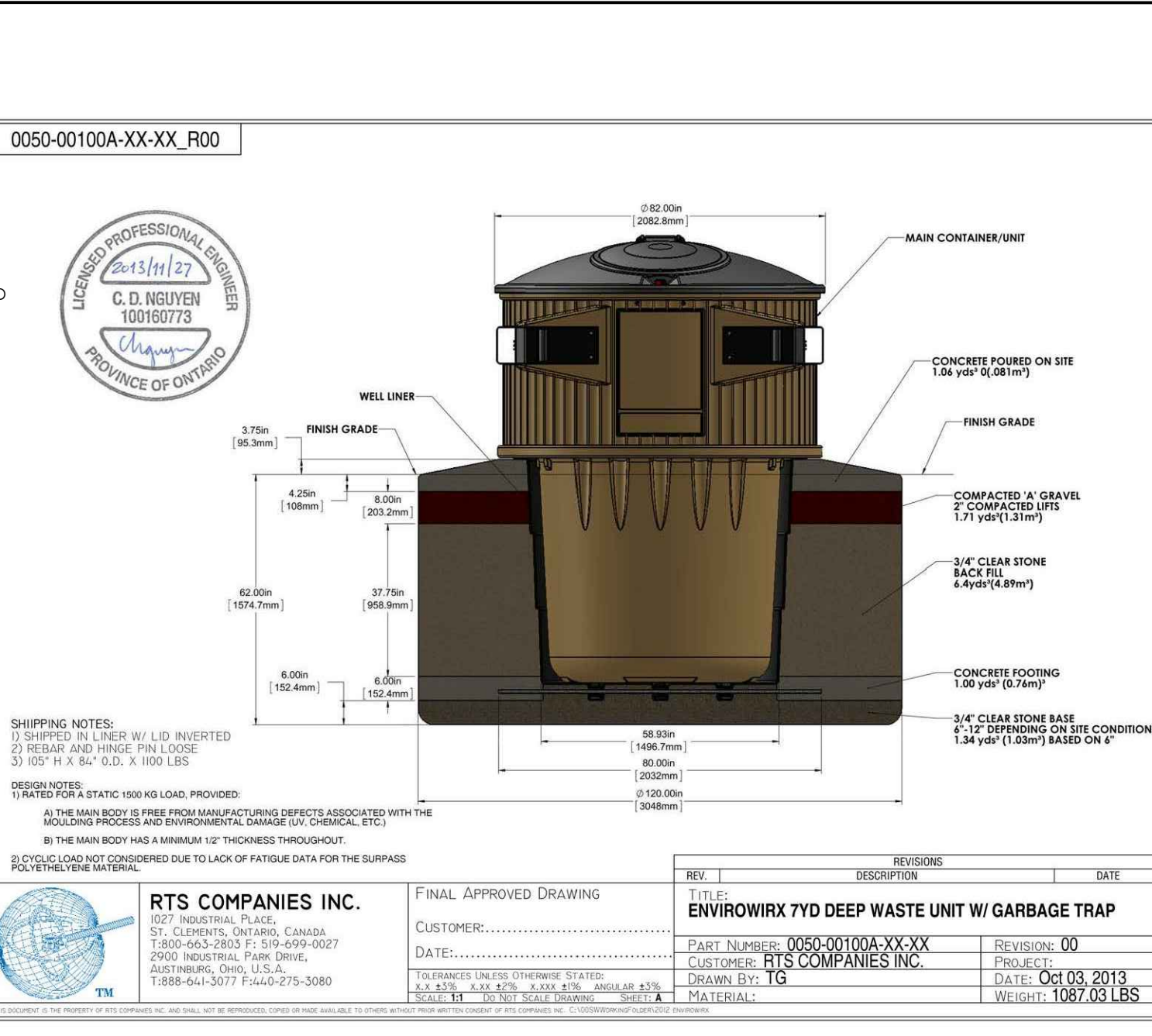
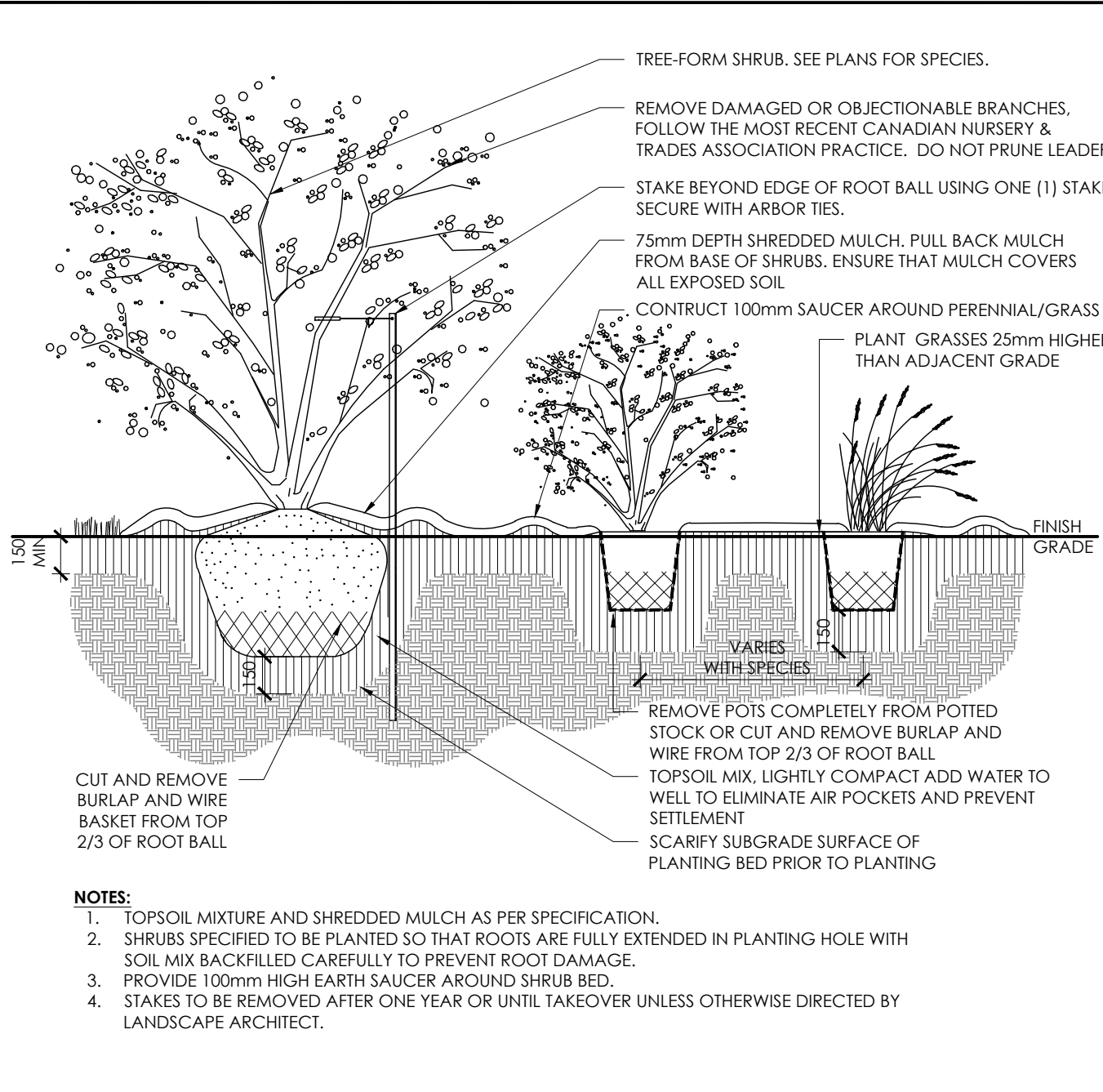
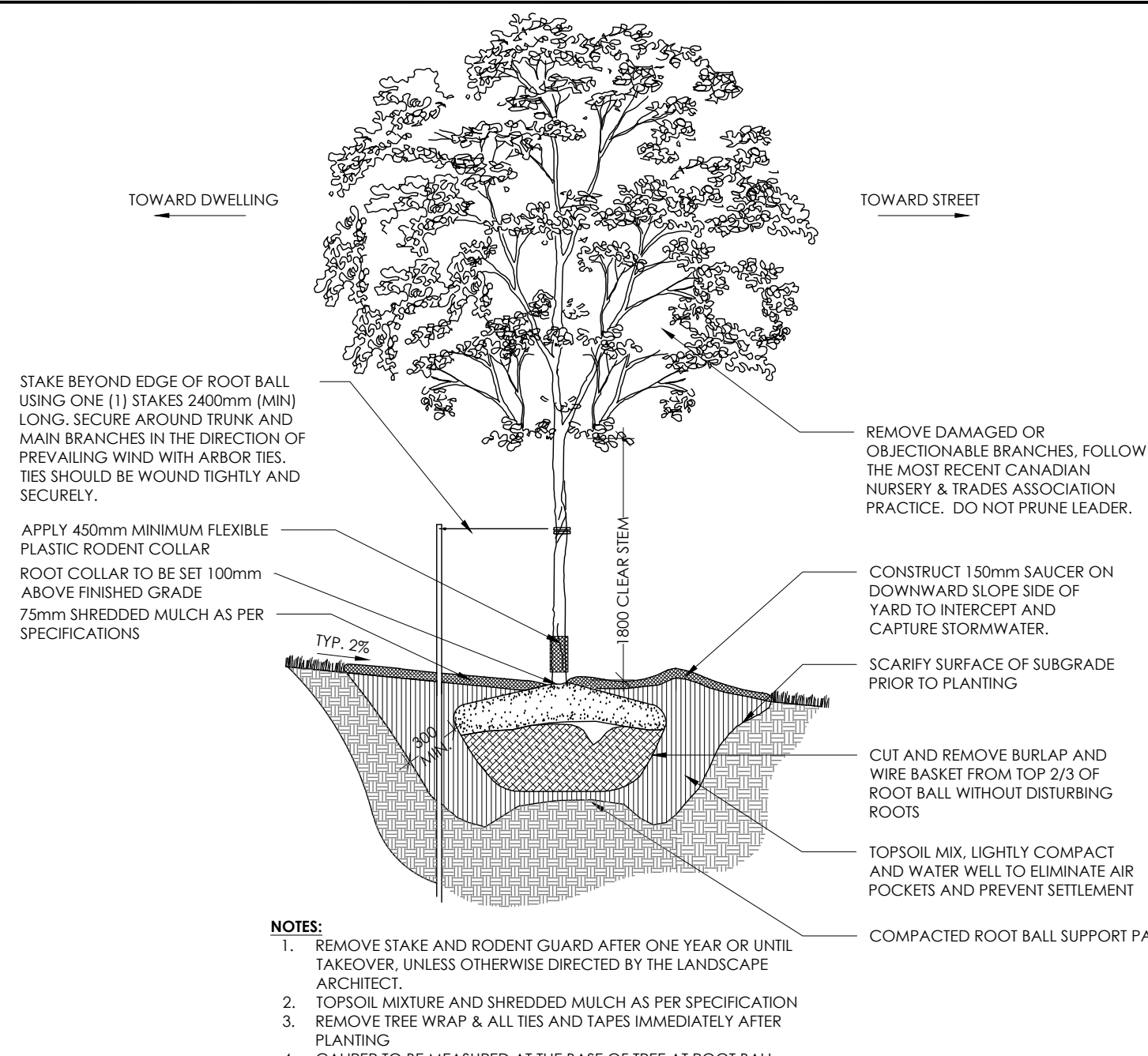
SITE INFORMATION

| | |
|------------------------|---|
| SITE PLAN | PROVIDED BY KORSIAK URBAN PLANNING DATED MARCH 19, 2020 |
| COMPOSITE UTILITY PLAN | CIP PROVIDED BY STANTEC/PROJ. NO. 160401085/DATED APRIL 2020 |
| GEOTECHNICAL STUDY | GEOTECHNICAL INVESTIGATION REPORT PROPOSED RESIDENTIAL DEVELOPMENT 3208 GREENBANK ROAD BY PATERSON GROUP REPORT NO. P202452 DATED MARCH 6, 2019 |
| CITY FILE NUMBER | D07-16-19-0015 |

| | | | |
|---------|----------|-------|--|
| Date | Apr 2020 | Sheet | |
| Scale | 1:250 | | |
| Drawn | TM | | |
| Checked | DE, JH | | |
| Job No. | 19-282 | | |

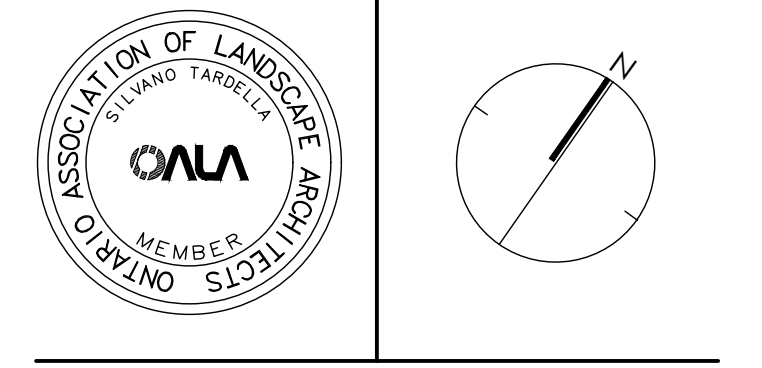
L-02

#19282
D07-16-19-0015



Contractor shall check all dimensions on the work and report any discrepancy to the Landscape Architect before proceeding. All drawings and specifications are the property of the Landscape Architect and must be returned at the completion of the work. This drawing is not to be used for construction until signed by the Landscape Architect.

| | | |
|----------|-----------------------------|------------|
| 1 | Issued for First Submission | Apr. 21/20 |
| No. | Description | Date |
| Revision | | |



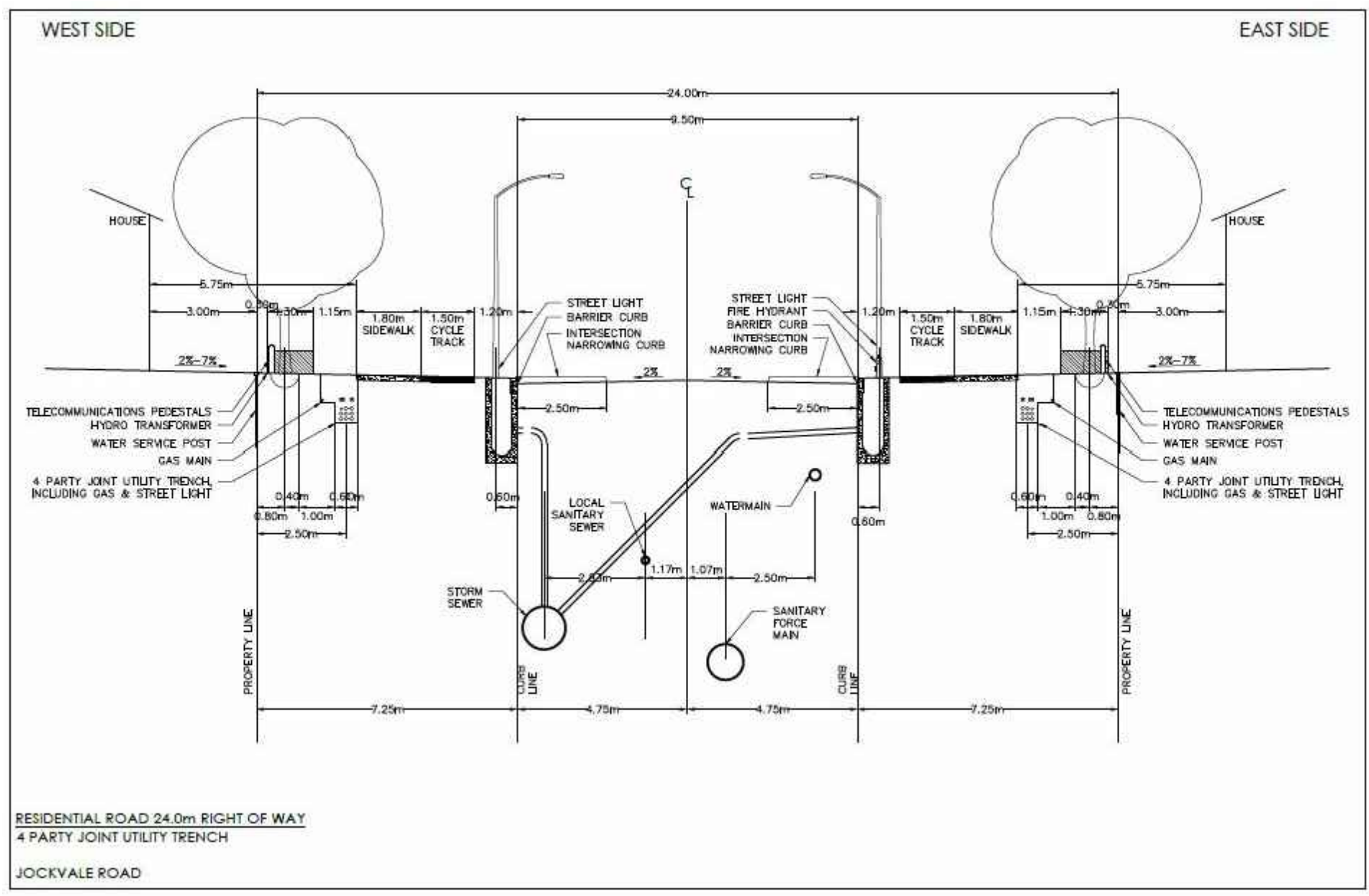
NAK
design strategies
1285 WELLINGTON STREET WEST, OTTAWA, ON K1Y 3A8 CANADA
T 613.237.2345 F 613.237.4423 NAKDESIGNSTRATEGIES.COM
Project

BLOCK 4
SOUTH NEPEAN TOWN CENTRE

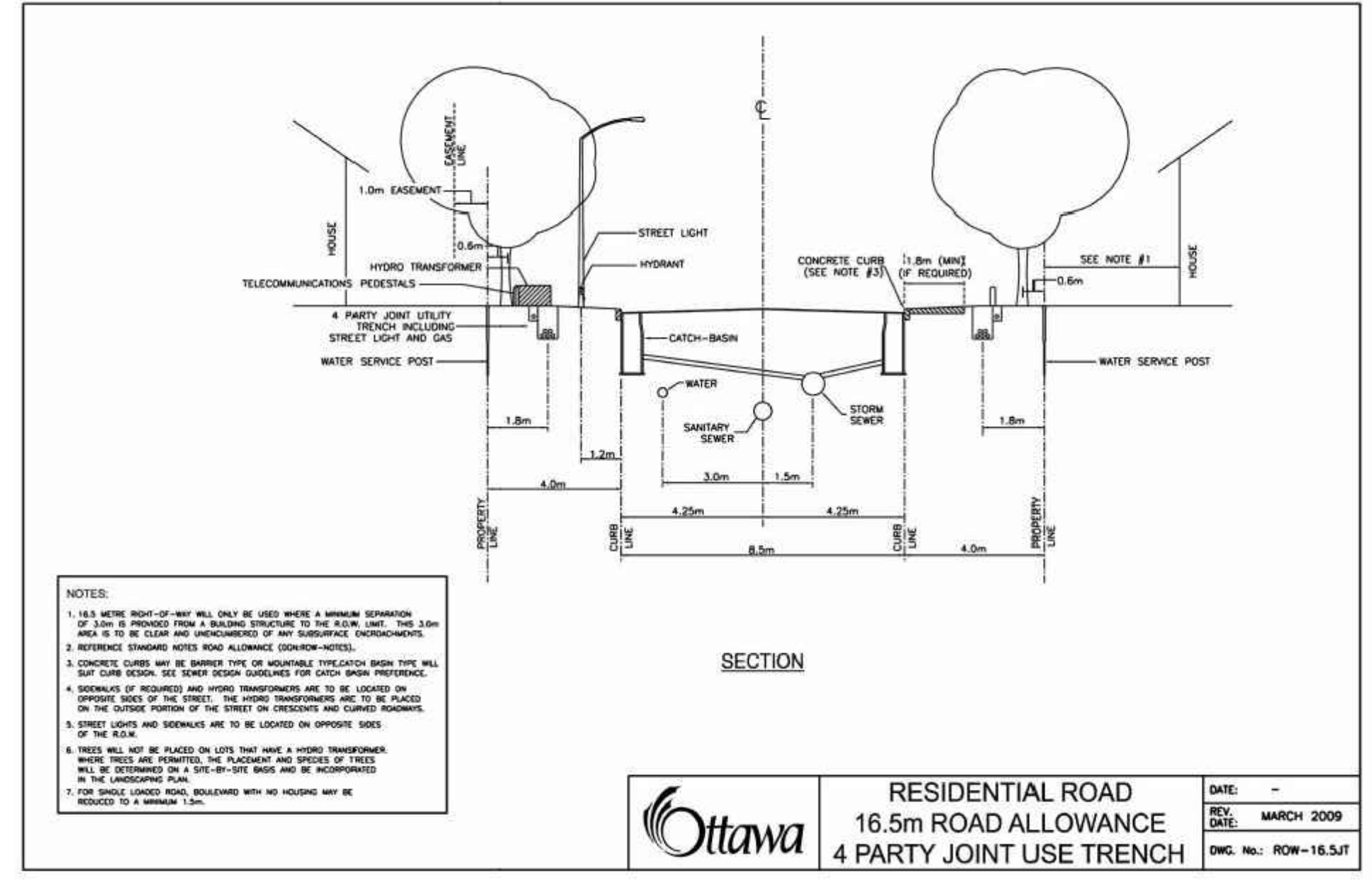
| | | | |
|---------|----------|-------------|------|
| Title | | DETAIL PLAN | |
| Date | Apr 2020 | Sheet | |
| Scale | N.T.S. | Drawn | TM |
| Checked | DE, JH | | D-01 |
| Job No. | 19-282 | | |

Contractor shall check all dimensions on the work and report any discrepancy to the Landscape Architect before proceeding. All drawings and specifications are the property of the Landscape Architect and must be returned at the completion of the work. This drawing is not to be used for construction until signed by the Landscape Architect.

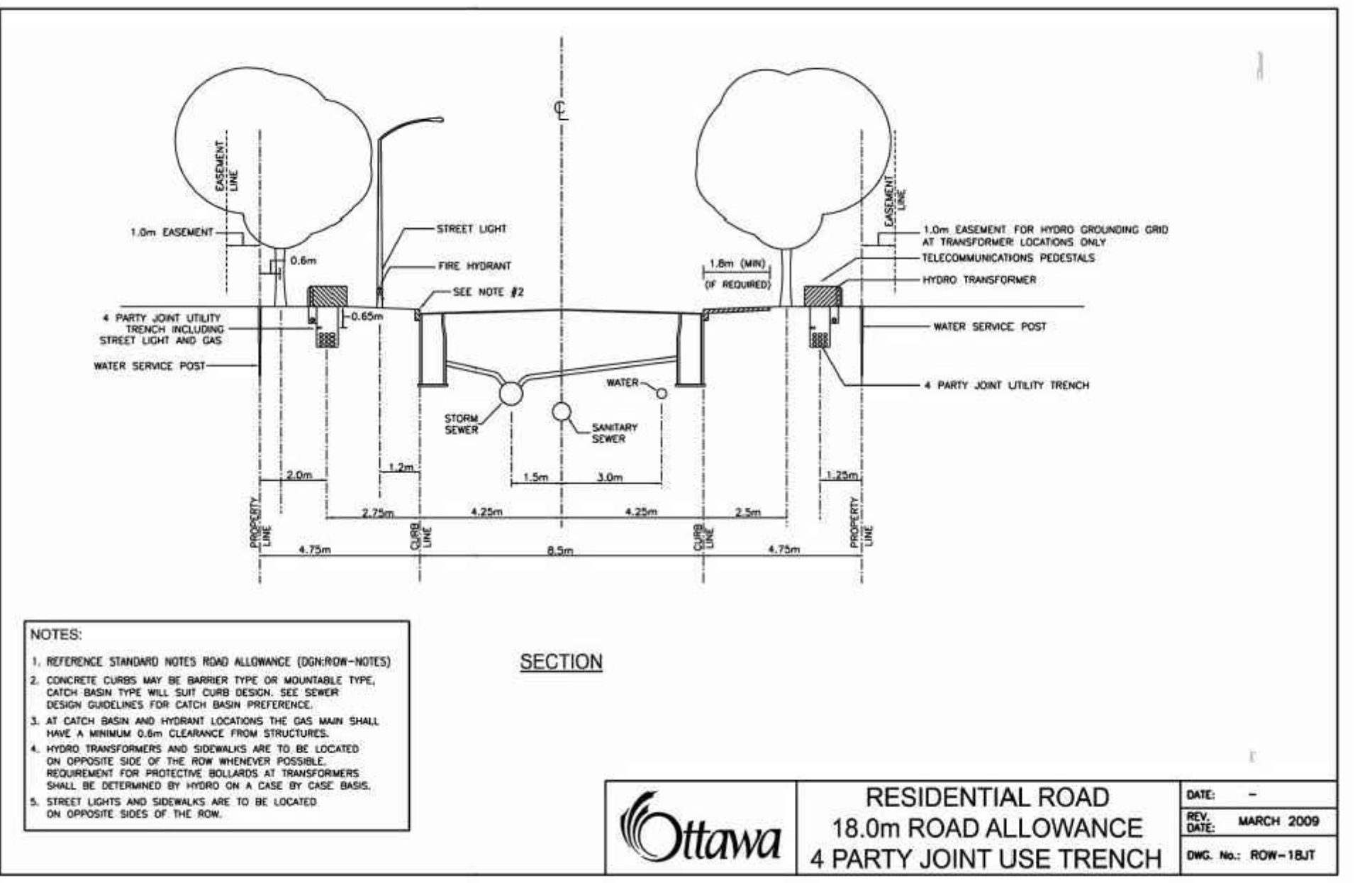
- LEGEND**
- PROPERTY LINE
 - MAIN AND LATERAL SERVICE TRENCH
- PLANTING**
- SMALL DECIDUOUS STREET TREE
 - MEDIUM DECIDUOUS STREET TREE
 - SOIL VOLUME CALCULATION
 - DRIVEWAY
 - VOLUME OF SHALLOW SERVICE



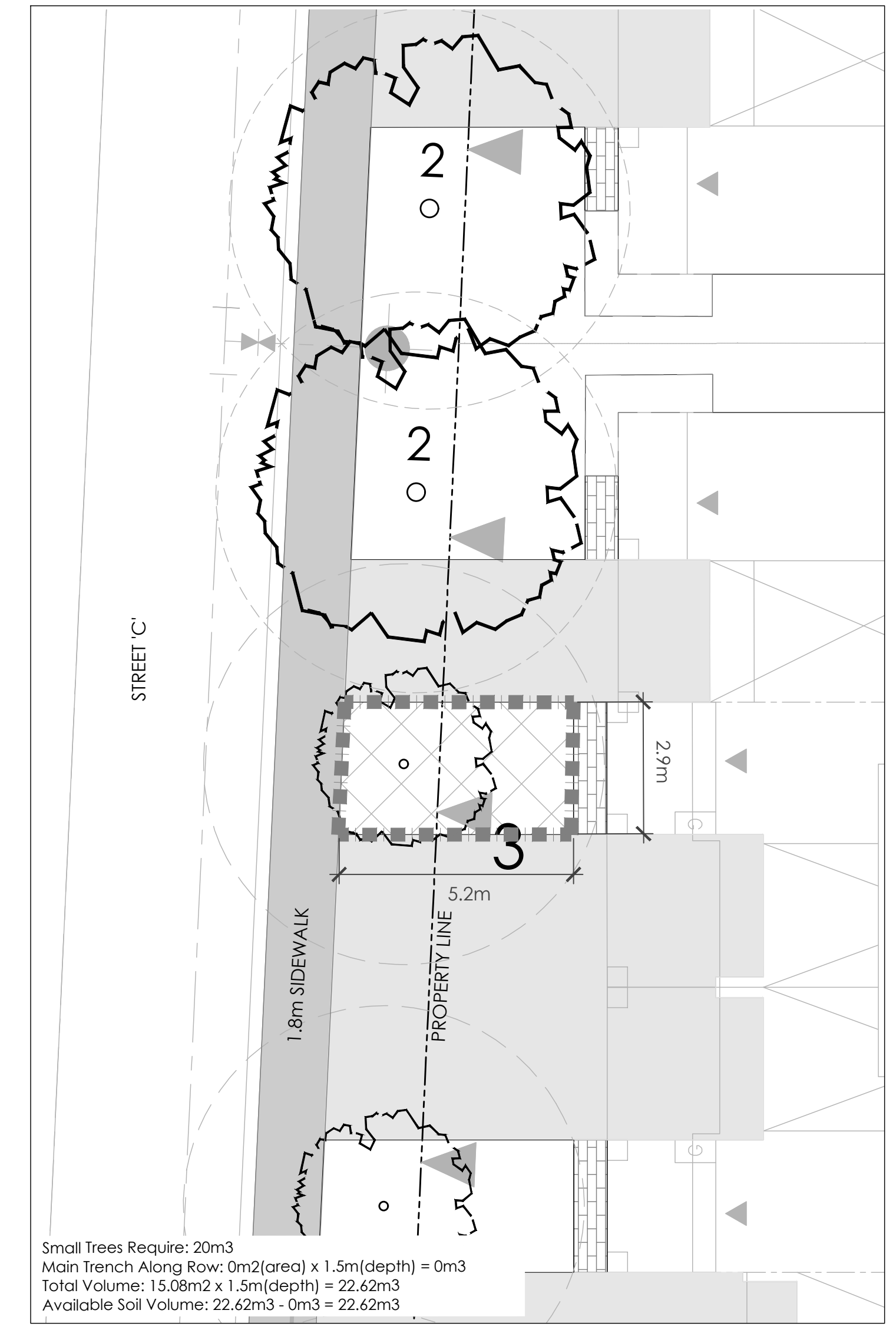
1 JOCKVALE ROAD
N.T.S.



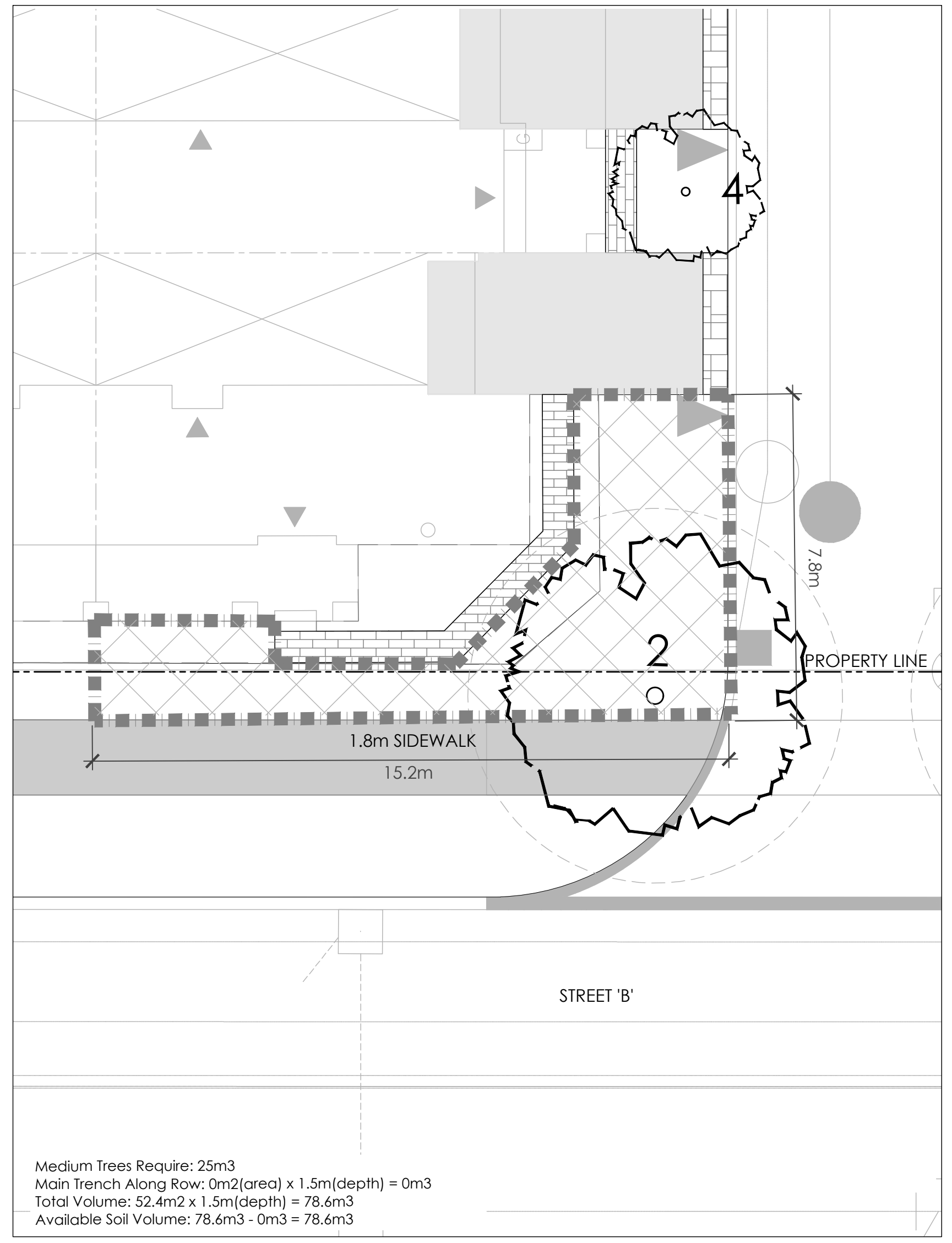
2 TYPICAL 16.5m ROW
N.T.S.



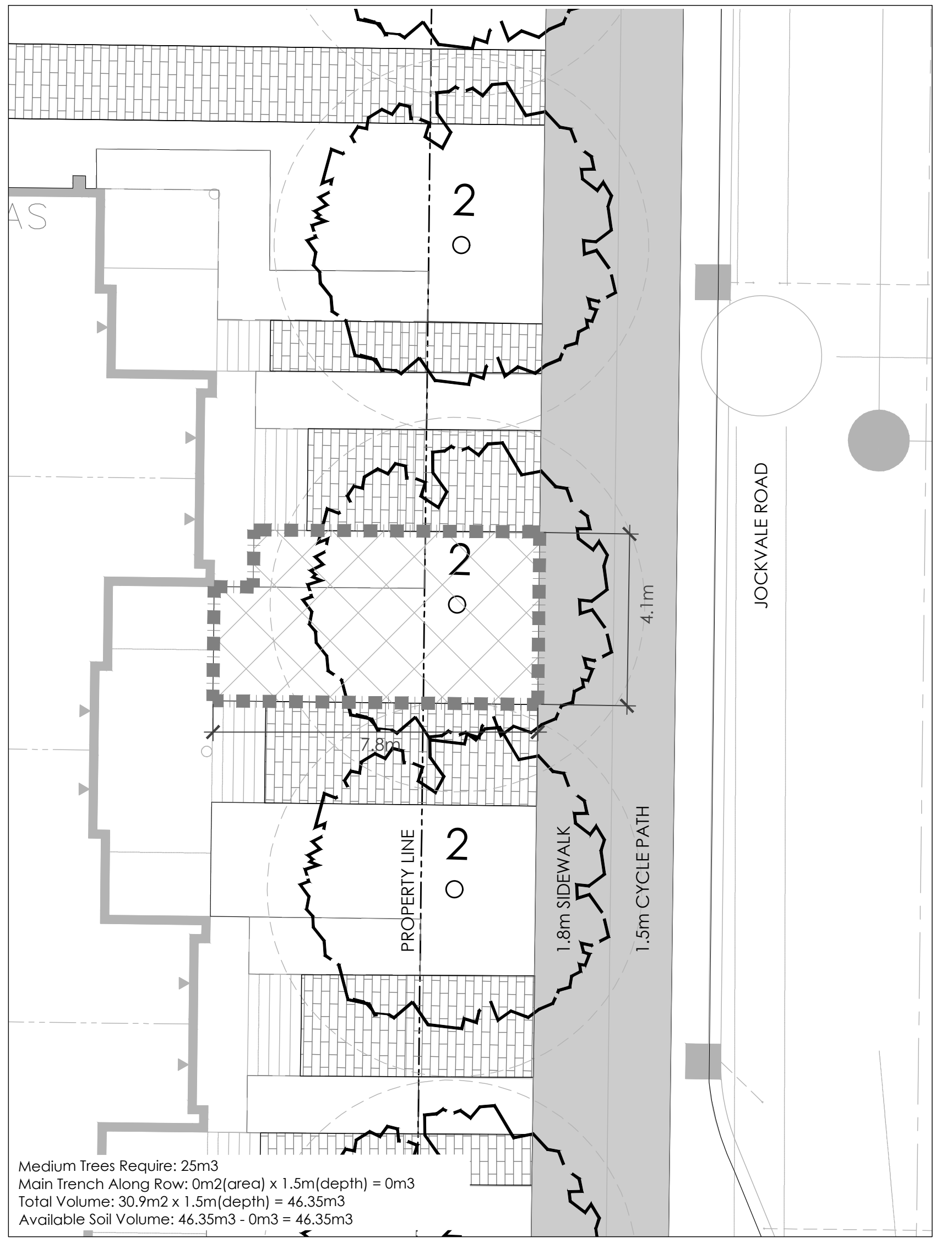
3 TYPICAL 18.0m ROW
N.T.S.



4 STREET 'C' SOIL VOLUME
1:100



5 STREET 'B' SOIL VOLUME
1:100



6 JOCKVALE ROAD SOIL VOLUME
1:100

| No. | Description | Date |
|-----|-----------------------------|-----------|
| 1 | Issued for First Submission | Apr.21/20 |

ASSOCIATION OF LANDSCAPE ARCHITECTS (ONTARIO) MEMBER

NAK design strategies

1285 WELLINGTON STREET WEST, OTTAWA, ON K1Y 3A8 CANADA
T 613.237.2345 F 613.237.4423 NAKDESIGNSTRATEGIES.COM

Project: BLOCK 4 SOUTH NEPEAN TOWN CENTRE

Title: ROW & SOIL VOLUME

| | |
|-----------------|--------|
| Date: Apr 2020 | Sheet: |
| Scale: NTS | D-02 |
| Drawn: TM | |
| Checked: DE, JH | |
| Job No.: 19-282 | |