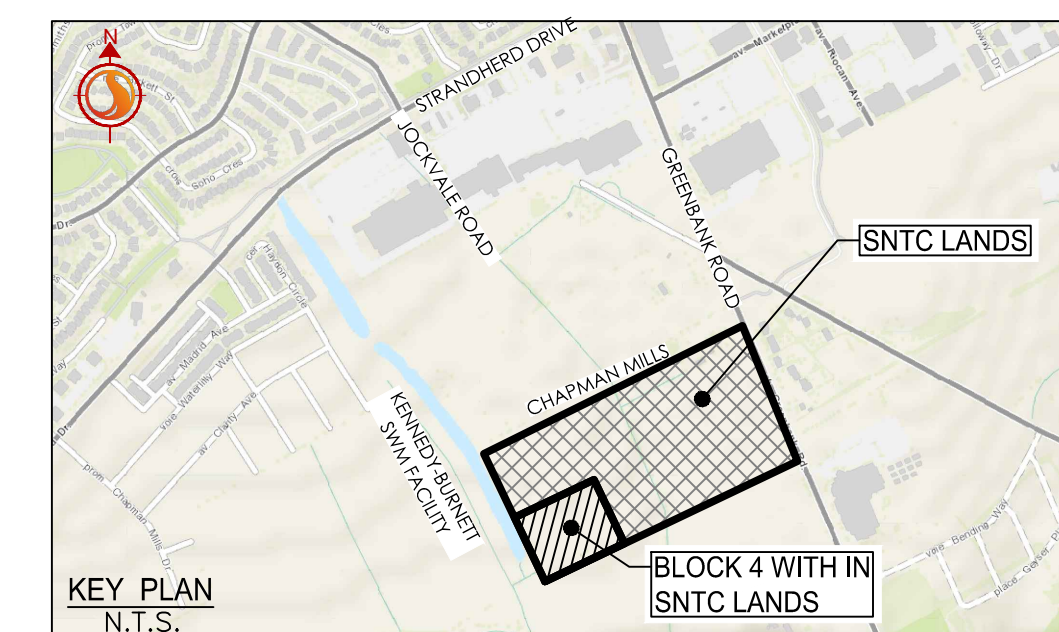


Copyright Reserved

The Contractor shall verify and be responsible for all dimensions. DO NOT scale the drawing - any errors or omissions shall be reported to Stantec without delay.  
The Copyrights to all designs and drawings are the property of Stantec. Reproduction or use for any purpose other than that authorized by Stantec is forbidden.

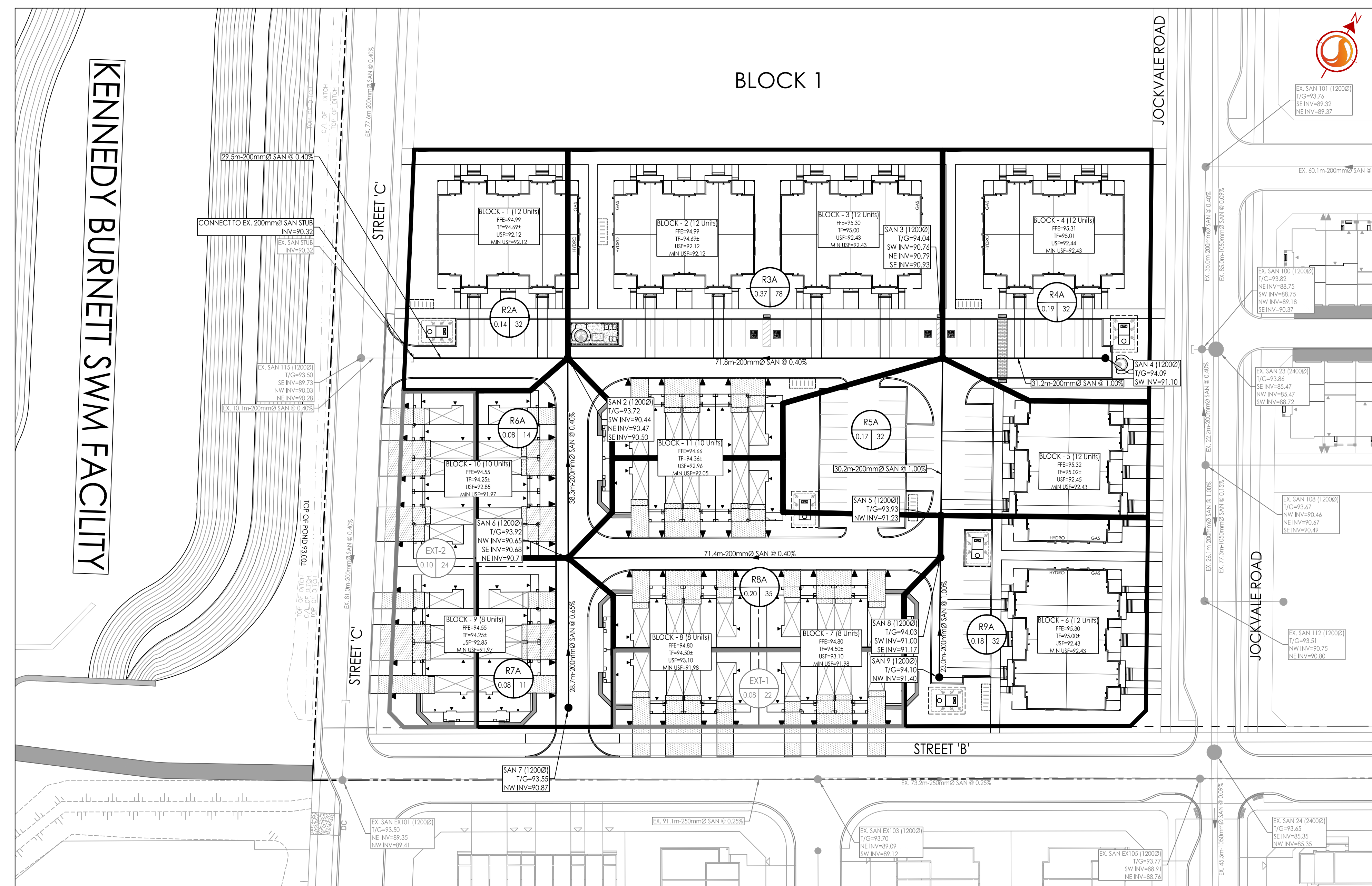


Legend

- R1A** SANITARY DRAINAGE AREA ID#
- 0.38 | 155** POPULATION
- SANITARY DRAINAGE AREA HO.
- G1A** SANITARY DRAINAGE AREA ID#
- 0.38 | INF** INFILTRATION RATES
- SANITARY DRAINAGE AREA HO.
- SANITARY DRAINAGE AREA
- PROPOSED SANITARY SEWER
- EXISTING SANITARY SEWER

Notes

- BLOCKS 1 TO 6 UNITS WILL BE SERVICED THROUGH SNTC LANDS BLOCK 4 PROPOSED SANITARY SYSTEM.



| Revision | By                     | Appd. | YY.MM.DD    |
|----------|------------------------|-------|-------------|
| 0        | ISSUED TO CITY FOR SPA | MJS   | TR 20.05.01 |

| File Name:         | MJS  | ANP   | MJS  | 20.02.25 |
|--------------------|------|-------|------|----------|
| 160401085 BLK 4 DB | Dwn. | Chkd. | Dgn. | YY.MM.DD |

Permit-Seal



Client/Project  
NEPEAN TOWN CENTRE DEVELOPMENT CORPORATION  
SNTC LANDS  
BLOCK 4  
OTTAWA, ON

Title  
SANITARY DRAINAGE PLAN

|                          |                 |               |
|--------------------------|-----------------|---------------|
| Project No.<br>160401085 | Scale<br>1:500  | 0 5 15 25m    |
| Drawing No.<br>SA-1      | Sheet<br>6 of 7 | Revision<br>0 |