

**GENERAL NOTES**

1. CONSULTING ENGINEER SHALL VERIFY DIMENSIONS, DIMENSIONS OWNERS BEFORE PROCEEDING WITH WORK.
2. ALL DRAWINGS & SPECIFICATIONS ARE INSTRUMENTS OF SERVICE AND SHALL BE RETURNED TO THE ARCHITECT UPON COMPLETION OF THE PROJECT. ANY REVISIONS TO BE MADE MUST BE APPROVED BY THE ARCHITECT IN WRITING.
3. ANY REVISIONS TO BE MADE MUST BE APPROVED BY THE ARCHITECT IN WRITING.
4. ANY REVISIONS TO BE MADE MUST BE APPROVED BY THE ARCHITECT IN WRITING.
5. ANY REVISIONS TO BE MADE MUST BE APPROVED BY THE ARCHITECT IN WRITING.
6. ANY REVISIONS TO BE MADE MUST BE APPROVED BY THE ARCHITECT IN WRITING.

No.	Revision/Issue	Date
6	ISSUED FOR SITE PLAN	FEB 21

**PROJECT MANAGER**  
HARISH GUPTA  
B. ARCH  
1066 PLANTIE DRIVE,  
OTTAWA, ON K1V 9T6  
T: 613-737-5939  
F: 613-812-1726  
C: 613-866-2984

**PLANNER**  
**jd planning**  
+ project management  
41 Rideau Ferry Road,  
Lombardy, ON K0G 1L0  
T: 613-812-1726  
E: jessica@jdpn.ca

**CLIENT**  
ANNIS, OSULLIVAN,  
VOLLEBECK LTD.  
14 Concourse Gate,  
Suite 500N, K2E 7S6  
Mississauga, ON L4W 1A7  
Tel: (613) 692-8662  
Fax: (613) 692-1945  
Email: haper@volld.com

**TRANSPORTATION ENGINEER**  
D. J. Hapenny &  
Associates Ltd.  
P. O. Box 774,  
Markham, ON K3M 1A7  
Tel: (905) 947-8888  
Fax: (905) 947-8888  
Email: dh@haperandassociates.com

**STRUCTURAL CONSULTANT**  
James B. Linton &  
Associates Inc.  
Structural & Machine Engineers  
3332 Conroy Ave,  
Ottawa, ON K2H 5A9  
Tel: (613) 722-5168  
Fax: (613) 729-9500  
Email: kb@designteam.ca

**Mechanical & Electrical Consultant**  
Linton B. Linton &  
Associates Inc.  
3332 Conroy Ave,  
Ottawa, ON K2H 5A9  
Tel: (613) 722-5168  
Fax: (613) 729-9500  
Email: kb@designteam.ca

**CIVIL CONSULTANT**  
LRJ  
Engineering Inc.  
4480 Woodbine Ave., Suite 1100,  
Markham, ON L3R 1X7  
Tel: (905) 479-1199  
Fax: (905) 479-1199  
Email: info@lrj.ca

**Mechanical & Electrical Consultant**  
CHARELLI KORBEL  
ENGINEERING LTD.  
NICKEL TOWER, 100,  
KAMLA, ON K2K 1X7  
Tel: (613) 277-0119  
Fax: (613) 277-0119  
Email: info@ckel.com

**ARCHITECT**  
VECTOR DESIGN ARCHITECTS  
14 STRATHBURY STREET,  
OTTAWA, ONTARIO K2G 5N8  
TELEPHONE: (613) 421-9806  
EMAIL: vecorch@gmail.com

**PROJECT AND LOCATION**  
HERITAGE CENTRE -  
HINDU TEMPLE - PHASE 2,  
4835 BANK ST., OTTAWA, ON  
P1N 043 26-0011

**ELEVATIONS**

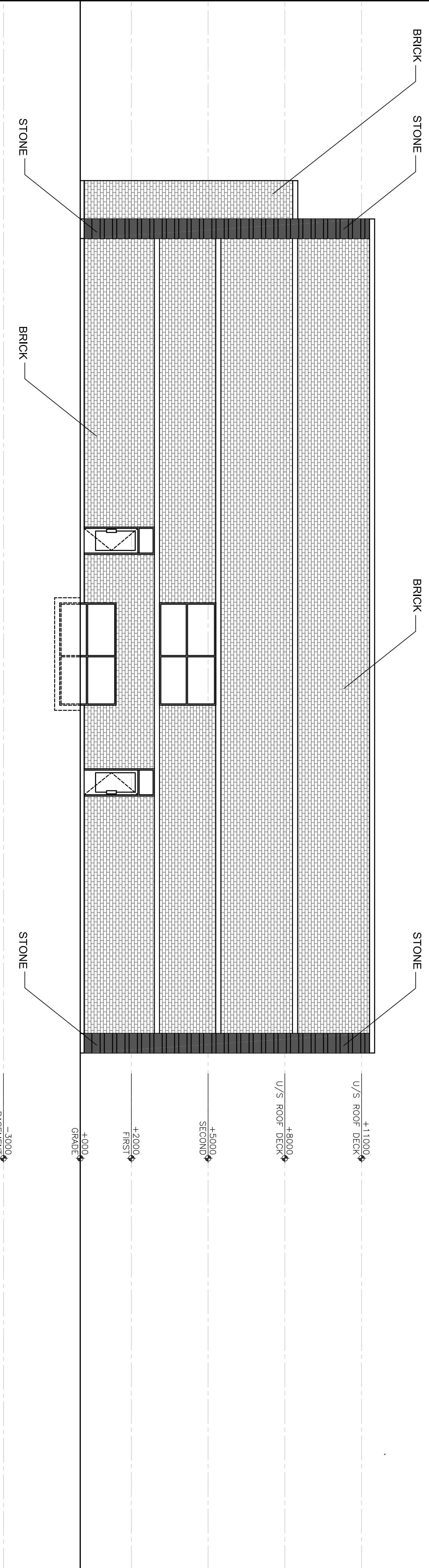
**JOB NUMBER**  
17033

**DATE**  
2019 05

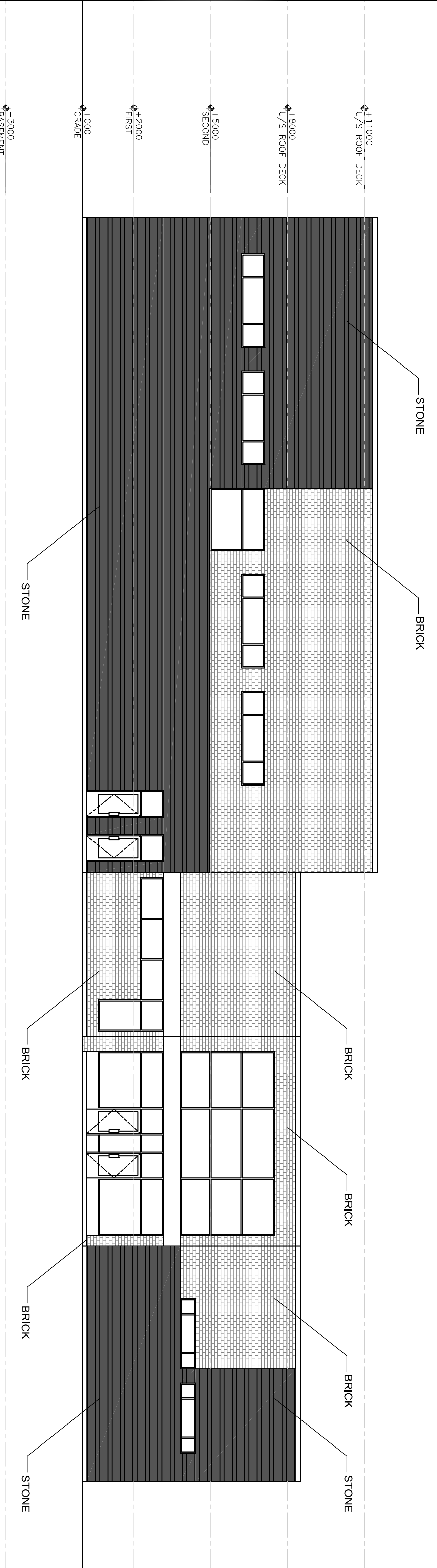
**SCALE**  
1:100

**SCALE NUMBER**  
A301

**DESIGNED BY**  
SAJK



**2 SOUTH ELEVATION**  
SCALE 1:100



**1 WEST ELEVATION**  
SCALE 1:100

