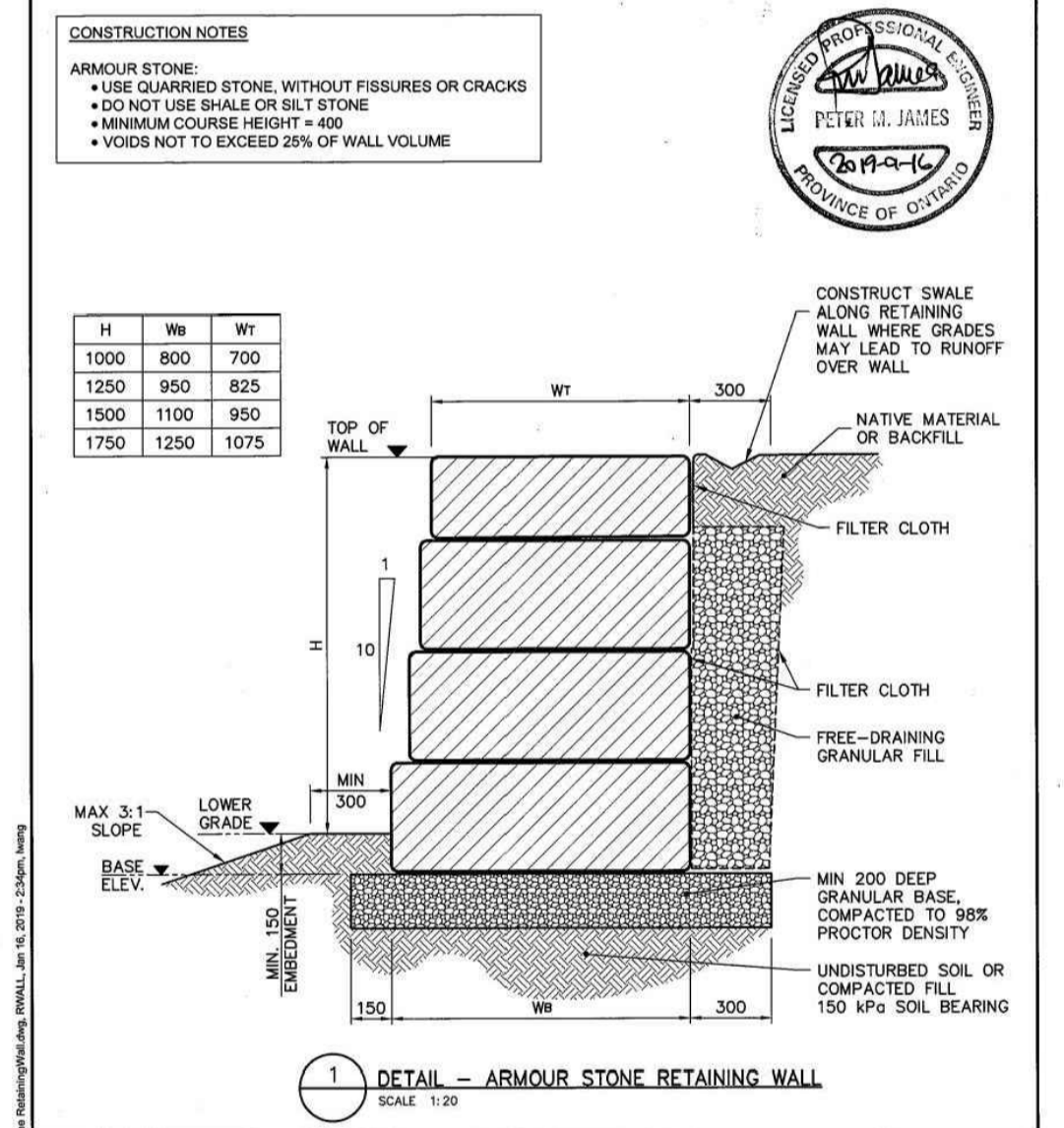


LEGEND

—	PROPOSED PROPERTY LINE	VC	EXISTING WATERMAIN VALVE CHAMBER
—	PROPOSED WATERMAIN	VB	EXISTING WATERMAIN SHUT-OFF VALVE BOX
—	PROPOSED VALVE BOX	400mm W/M	EXISTING WATERMAIN
—	PROPOSED STORM MANHOLE	VB	EXISTING HYDRANT C/W LEAD & SHUT-OFF VALVE BOX
—	PROPOSED SANITARY SEWER	GV	EXISTING GAS MAIN
—	PROPOSED FOUNDATION DRAIN	G	EXISTING GAS MAIN
—	UNDERGROUND PARKING LIMITS	X-G	EXISTING ABANDONED GAS MAIN
—	PROPOSED STORM SEWER	B-B	EXISTING BELL CONDUIT
—	PROPOSED STORM TRENCH DRAIN	OH	EXISTING OVER HEAD WIRE
—	PROPOSED CAP	HP/UP	EXISTING HYDROUTILITY POLE
—	EXISTING LEGAL ADJACENT LINE	GH	EXISTING GUY WIRE
—	EXISTING STANDARD IRON BAR / CONTROL POINT	TMH	EXISTING TRAFFIC MANHOLE
—	EXISTING FLOW DIRECTION OF SEWERS	JUL	EXISTING JOINT USE STREET LIGHT
—	EXISTING SANITARY MANHOLE & SEWER	LS	EXISTING STREET LIGHT
—	EXISTING STORM MANHOLE & SEWER	LZH	EXISTING TRAFFIC HAND HOLE
—	EXISTING STORM TRENCH DRAIN	TS	EXISTING TRAFFIC SIGN
—	EXISTING CATCH BASIN	DICB	EXISTING DITCH INLET CATCH BASIN



NOVATECH
Engineers, Planners & Landscape Architects
Suite 200, 240 Michael Cowland Drive
Ottawa, Ontario, Canada K2M 1P6
Telephone: (613) 254-9643
Facsimile: (613) 254-5867
Website: www.novatech-eng.com

ARMOUR STONE RETAINING WALL
JAN. 2019 117036 FIG1

PIPE CROSSINGS

NO.	TOP OF WATERMAIN	STORM INV	SANITARY INV	CLEARANCE (ACTUAL)	CLEARANCE (MIN)
A	90.80	89.52		0.50	0.25 (W25.2)
B	90.80	89.51		0.50	0.25 (W25.2)
C		89.51	90.43	0.32	0.30
D		89.46	91.04	0.98	0.30
E	90.57	89.46		0.36	0.25 (W25.2)
F	90.57	89.46		0.36	0.25 (W25.2)
G	90.39	90.90		0.51	0.50 (W25)
H	90.41	90.92		0.51	0.50 (W25)
I		90.99	90.47	0.30	0.30
J		90.26 & 91.02		0.55	0.30
K		89.50 & 91.05		0.93	0.30

STORM ICD TABLE

STRUCTURE	T/G	100YR WL	OUTLET PIPE DIA.	INVERT	ICD MODEL/SIZE	100-YR HEAD (m)	RELEASE RATE (L/s)
MH102	93.23	93.33	250mm	90.44	IPEX TEMPEST LMF 40	2.77	2.2
MH106	92.81	91.70	250mm	90.10	IPEX TEMPEST LMF 45	1.48	2.2

NOTE: 100-YR HEAD MEASURED FROM CENTERLINE OF 250mm OUTLET PIPE

WATERMAIN TABLE

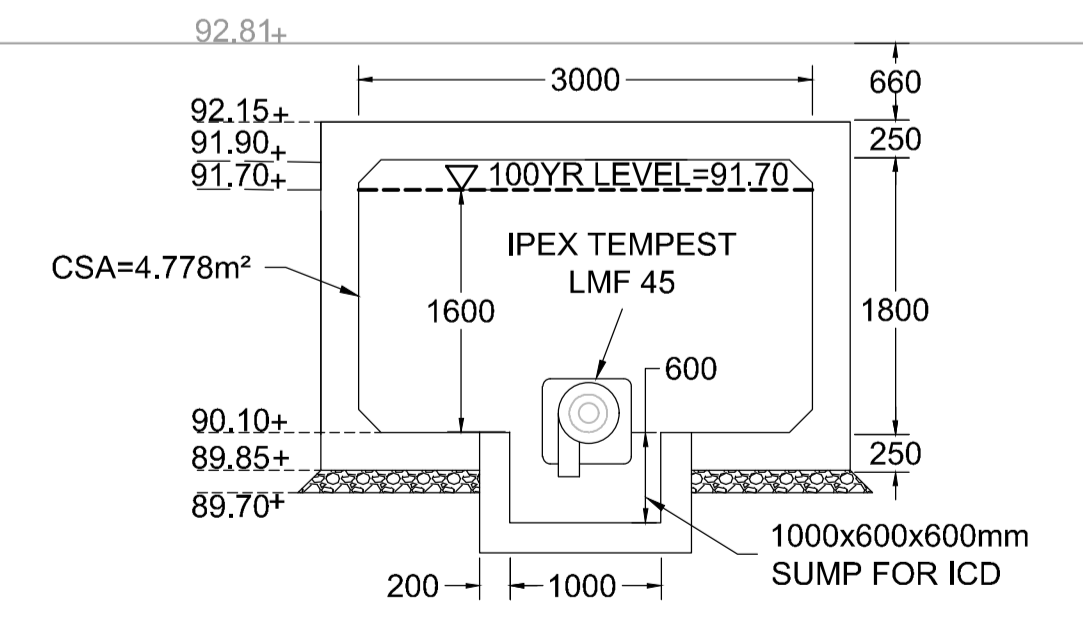
STATION	SURFACE ELEVATION	TOP OF WM ELEVATION	DESCRIPTION
1+000	90.25	88.02	DUAL 150mm Ø WATERMAIN FROM TEE TO HOTEL
1+012.4	92.94	90.54	CONNECT TO EXISTING 400mm Ø WM 90° THURST BLOCK AT CONNECTION
1+013.7	92.97	90.57	PROPOSED VALVE
1+015.5	93.02	90.62	PROPOSED CROSSING OVER PROP. STORM CONNECTION TO BUILDING

NOTE: WHERE PROPOSED WATERMAIN IS LESS THAN 2.4m BELOW GRADE, INSULATE WATERMAIN PER CITY OF OTTAWA STANDARD W22.

APPROVED **REFUSED**

THIS DAY OF 20

DON HERWEYER, MCIP, RPP, MANAGER
DEVELOPMENT REVIEW SOUTH
PLANNING, INFRASTRUCTURE AND



NOTE: THE POSITION OF ALL POLE LINES, CONDUITS, WATERMAINS, SEWERS AND OTHER UNDERGROUND AND OVERGROUND UTILITIES AND STRUCTURES IS NOT NECESSARILY SHOWN ON THE CONTRACT DRAWINGS, AND WHERE SHOWN, THE ACCURACY OF THE POSITION OF SUCH UTILITIES AND STRUCTURES IS NOT GUARANTEED. BEFORE STARTING WORK, DETERMINE THE EXACT LOCATION OF ALL SUCH UTILITIES AND STRUCTURES AND ASSUME ALL LIABILITY FOR DAMAGE TO THEM.

No.	REVISION	DATE	BY	No.	REVISION	DATE	BY
1.	ISSUED FOR SITE PLAN APPLICATION	APR 29/20	GJM	8.	REVISED STORM SEWER	MAR 22/18	GJM
2.	ISSUED FOR COORDINATION	APR 09/20	GJM	7.	REVISED PER CITY COMMENTS	JAN 31/18	GJM
3.	ISSUED FOR COORDINATION	APR 02/20	GJM	6.	REVISED GRADING ALONG FRONTAGE	DEC 20/17	GJM
4.	ISSUED FOR TENDER	DEC 14/18	GJM	5.	REVISED RETAINING WALL AND WEST PARKING LOT	NOV 24/17	GJM
5.	SANITARY SERVICE INVERT REVISED AND RETAINING WALL ADDED	NOV 23/18	GJM	4.	ADDITION OF PROPOSED OGS SYSTEM	NOV 15/17	GJM
6.	REVISED PER ARCHITECTS SITE PLAN CHANGES	AUG 31/18	GJM	3.	ADDITION OF STORM ICD TABLE	OCT 26/17	GJM
7.				2.	REVISED PER CITY COMMENTS	SEPT 7/17	GJM
8.				1.	ISSUED FOR SITE PLAN APPLICATION	MAY 25/17	GJM



SCALE

DESIGN: GJM
CHECKED: GJM
DRAWN: MWC
CHECKED: GJM
APPROVED: GJM

1:300

FOR REVIEW ONLY

NOVATECH
Engineers, Planners & Landscape Architects
Suite 200, 240 Michael Cowland Drive
Ottawa, Ontario, Canada K2M 1P6
Telephone: (613) 254-9643
Facsimile: (613) 254-5867
Website: www.novatech-eng.com

LOCATION: 1026 - 1054 CITY OF OTTAWA HUNT CLUB DEVELOPMENT

DRAWING NAME: GENERAL PLAN OF SERVICES - PHASE II

PROJECT No.: 117036-00
REV: REV # 14
DRAWING No.: 117036-GP2

M:\2017\117036\CAD\Drawings\117036-GP-Rev2.dwg, GP2-24-11, UTM: Apr 22, 2020 - 11:15 am, rjocad

D07-12-17-0068