

DOUGLAS JAMES, MCIP, RPP
MANAGER, DEVELOPMENT REVIEW - CENTRAL
PLANNING, INFRASTRUCTURE & ECONOMIC
DEVELOPMENT DEPARTMENT, CITY OF OTTAWA

APPROVED
By Douglas James at 2:56 pm, Feb 12, 2022

LEGEND - MATERIALS

- M1.1 BRICK SOLID GRAY BRICK (BLACK HILL SMOOTH)
- M1.2 FORMAL FINISH MASONRY BRICK & CAPPEL FORMAL FINISH
- M2.1 1/2" THICK CLADDING (20'x40'x1/2" ALUMINUM CLADDING SYSTEM - CLEAR TEMPERED GLASS PANEL)
- M2.2 1/2" THICK CLADDING (20'x40'x1/2" ALUMINUM CLADDING SYSTEM - CLEAR TEMPERED GLASS PANEL)
- M2.3 1/2" THICK CLADDING (20'x40'x1/2" ALUMINUM CLADDING SYSTEM - CLEAR TEMPERED GLASS PANEL)
- M2.4 1/2" THICK CLADDING (20'x40'x1/2" ALUMINUM CLADDING SYSTEM - CLEAR TEMPERED GLASS PANEL)
- M2.5 1/2" THICK CLADDING (20'x40'x1/2" ALUMINUM CLADDING SYSTEM - CLEAR TEMPERED GLASS PANEL)
- M2.6 1/2" THICK CLADDING (20'x40'x1/2" ALUMINUM CLADDING SYSTEM - CLEAR TEMPERED GLASS PANEL)
- M2.7 1/2" THICK CLADDING (20'x40'x1/2" ALUMINUM CLADDING SYSTEM - CLEAR TEMPERED GLASS PANEL)
- M2.8 1/2" THICK CLADDING (20'x40'x1/2" ALUMINUM CLADDING SYSTEM - CLEAR TEMPERED GLASS PANEL)
- M2.9 1/2" THICK CLADDING (20'x40'x1/2" ALUMINUM CLADDING SYSTEM - CLEAR TEMPERED GLASS PANEL)
- M2.10 1/2" THICK CLADDING (20'x40'x1/2" ALUMINUM CLADDING SYSTEM - CLEAR TEMPERED GLASS PANEL)
- M2.11 1/2" THICK CLADDING (20'x40'x1/2" ALUMINUM CLADDING SYSTEM - CLEAR TEMPERED GLASS PANEL)
- M2.12 1/2" THICK CLADDING (20'x40'x1/2" ALUMINUM CLADDING SYSTEM - CLEAR TEMPERED GLASS PANEL)
- M2.13 1/2" THICK CLADDING (20'x40'x1/2" ALUMINUM CLADDING SYSTEM - CLEAR TEMPERED GLASS PANEL)
- M2.14 1/2" THICK CLADDING (20'x40'x1/2" ALUMINUM CLADDING SYSTEM - CLEAR TEMPERED GLASS PANEL)
- M2.15 1/2" THICK CLADDING (20'x40'x1/2" ALUMINUM CLADDING SYSTEM - CLEAR TEMPERED GLASS PANEL)
- M2.16 1/2" THICK CLADDING (20'x40'x1/2" ALUMINUM CLADDING SYSTEM - CLEAR TEMPERED GLASS PANEL)
- M2.17 1/2" THICK CLADDING (20'x40'x1/2" ALUMINUM CLADDING SYSTEM - CLEAR TEMPERED GLASS PANEL)
- M2.18 1/2" THICK CLADDING (20'x40'x1/2" ALUMINUM CLADDING SYSTEM - CLEAR TEMPERED GLASS PANEL)
- M2.19 1/2" THICK CLADDING (20'x40'x1/2" ALUMINUM CLADDING SYSTEM - CLEAR TEMPERED GLASS PANEL)
- M2.20 1/2" THICK CLADDING (20'x40'x1/2" ALUMINUM CLADDING SYSTEM - CLEAR TEMPERED GLASS PANEL)
- M2.21 1/2" THICK CLADDING (20'x40'x1/2" ALUMINUM CLADDING SYSTEM - CLEAR TEMPERED GLASS PANEL)
- M2.22 1/2" THICK CLADDING (20'x40'x1/2" ALUMINUM CLADDING SYSTEM - CLEAR TEMPERED GLASS PANEL)
- M2.23 1/2" THICK CLADDING (20'x40'x1/2" ALUMINUM CLADDING SYSTEM - CLEAR TEMPERED GLASS PANEL)
- M2.24 1/2" THICK CLADDING (20'x40'x1/2" ALUMINUM CLADDING SYSTEM - CLEAR TEMPERED GLASS PANEL)
- M2.25 1/2" THICK CLADDING (20'x40'x1/2" ALUMINUM CLADDING SYSTEM - CLEAR TEMPERED GLASS PANEL)
- M2.26 1/2" THICK CLADDING (20'x40'x1/2" ALUMINUM CLADDING SYSTEM - CLEAR TEMPERED GLASS PANEL)
- M2.27 1/2" THICK CLADDING (20'x40'x1/2" ALUMINUM CLADDING SYSTEM - CLEAR TEMPERED GLASS PANEL)
- M2.28 1/2" THICK CLADDING (20'x40'x1/2" ALUMINUM CLADDING SYSTEM - CLEAR TEMPERED GLASS PANEL)
- M2.29 1/2" THICK CLADDING (20'x40'x1/2" ALUMINUM CLADDING SYSTEM - CLEAR TEMPERED GLASS PANEL)
- M2.30 1/2" THICK CLADDING (20'x40'x1/2" ALUMINUM CLADDING SYSTEM - CLEAR TEMPERED GLASS PANEL)
- M2.31 1/2" THICK CLADDING (20'x40'x1/2" ALUMINUM CLADDING SYSTEM - CLEAR TEMPERED GLASS PANEL)
- M2.32 1/2" THICK CLADDING (20'x40'x1/2" ALUMINUM CLADDING SYSTEM - CLEAR TEMPERED GLASS PANEL)
- M2.33 1/2" THICK CLADDING (20'x40'x1/2" ALUMINUM CLADDING SYSTEM - CLEAR TEMPERED GLASS PANEL)
- M2.34 1/2" THICK CLADDING (20'x40'x1/2" ALUMINUM CLADDING SYSTEM - CLEAR TEMPERED GLASS PANEL)
- M2.35 1/2" THICK CLADDING (20'x40'x1/2" ALUMINUM CLADDING SYSTEM - CLEAR TEMPERED GLASS PANEL)
- M2.36 1/2" THICK CLADDING (20'x40'x1/2" ALUMINUM CLADDING SYSTEM - CLEAR TEMPERED GLASS PANEL)
- M2.37 1/2" THICK CLADDING (20'x40'x1/2" ALUMINUM CLADDING SYSTEM - CLEAR TEMPERED GLASS PANEL)
- M2.38 1/2" THICK CLADDING (20'x40'x1/2" ALUMINUM CLADDING SYSTEM - CLEAR TEMPERED GLASS PANEL)
- M2.39 1/2" THICK CLADDING (20'x40'x1/2" ALUMINUM CLADDING SYSTEM - CLEAR TEMPERED GLASS PANEL)
- M2.40 1/2" THICK CLADDING (20'x40'x1/2" ALUMINUM CLADDING SYSTEM - CLEAR TEMPERED GLASS PANEL)
- M2.41 1/2" THICK CLADDING (20'x40'x1/2" ALUMINUM CLADDING SYSTEM - CLEAR TEMPERED GLASS PANEL)
- M2.42 1/2" THICK CLADDING (20'x40'x1/2" ALUMINUM CLADDING SYSTEM - CLEAR TEMPERED GLASS PANEL)
- M2.43 1/2" THICK CLADDING (20'x40'x1/2" ALUMINUM CLADDING SYSTEM - CLEAR TEMPERED GLASS PANEL)
- M2.44 1/2" THICK CLADDING (20'x40'x1/2" ALUMINUM CLADDING SYSTEM - CLEAR TEMPERED GLASS PANEL)
- M2.45 1/2" THICK CLADDING (20'x40'x1/2" ALUMINUM CLADDING SYSTEM - CLEAR TEMPERED GLASS PANEL)
- M2.46 1/2" THICK CLADDING (20'x40'x1/2" ALUMINUM CLADDING SYSTEM - CLEAR TEMPERED GLASS PANEL)
- M2.47 1/2" THICK CLADDING (20'x40'x1/2" ALUMINUM CLADDING SYSTEM - CLEAR TEMPERED GLASS PANEL)
- M2.48 1/2" THICK CLADDING (20'x40'x1/2" ALUMINUM CLADDING SYSTEM - CLEAR TEMPERED GLASS PANEL)
- M2.49 1/2" THICK CLADDING (20'x40'x1/2" ALUMINUM CLADDING SYSTEM - CLEAR TEMPERED GLASS PANEL)
- M2.50 1/2" THICK CLADDING (20'x40'x1/2" ALUMINUM CLADDING SYSTEM - CLEAR TEMPERED GLASS PANEL)
- M2.51 1/2" THICK CLADDING (20'x40'x1/2" ALUMINUM CLADDING SYSTEM - CLEAR TEMPERED GLASS PANEL)
- M2.52 1/2" THICK CLADDING (20'x40'x1/2" ALUMINUM CLADDING SYSTEM - CLEAR TEMPERED GLASS PANEL)
- M2.53 1/2" THICK CLADDING (20'x40'x1/2" ALUMINUM CLADDING SYSTEM - CLEAR TEMPERED GLASS PANEL)
- M2.54 1/2" THICK CLADDING (20'x40'x1/2" ALUMINUM CLADDING SYSTEM - CLEAR TEMPERED GLASS PANEL)
- M2.55 1/2" THICK CLADDING (20'x40'x1/2" ALUMINUM CLADDING SYSTEM - CLEAR TEMPERED GLASS PANEL)
- M2.56 1/2" THICK CLADDING (20'x40'x1/2" ALUMINUM CLADDING SYSTEM - CLEAR TEMPERED GLASS PANEL)
- M2.57 1/2" THICK CLADDING (20'x40'x1/2" ALUMINUM CLADDING SYSTEM - CLEAR TEMPERED GLASS PANEL)
- M2.58 1/2" THICK CLADDING (20'x40'x1/2" ALUMINUM CLADDING SYSTEM - CLEAR TEMPERED GLASS PANEL)
- M2.59 1/2" THICK CLADDING (20'x40'x1/2" ALUMINUM CLADDING SYSTEM - CLEAR TEMPERED GLASS PANEL)
- M2.60 1/2" THICK CLADDING (20'x40'x1/2" ALUMINUM CLADDING SYSTEM - CLEAR TEMPERED GLASS PANEL)
- M2.61 1/2" THICK CLADDING (20'x40'x1/2" ALUMINUM CLADDING SYSTEM - CLEAR TEMPERED GLASS PANEL)
- M2.62 1/2" THICK CLADDING (20'x40'x1/2" ALUMINUM CLADDING SYSTEM - CLEAR TEMPERED GLASS PANEL)
- M2.63 1/2" THICK CLADDING (20'x40'x1/2" ALUMINUM CLADDING SYSTEM - CLEAR TEMPERED GLASS PANEL)
- M2.64 1/2" THICK CLADDING (20'x40'x1/2" ALUMINUM CLADDING SYSTEM - CLEAR TEMPERED GLASS PANEL)
- M2.65 1/2" THICK CLADDING (20'x40'x1/2" ALUMINUM CLADDING SYSTEM - CLEAR TEMPERED GLASS PANEL)
- M2.66 1/2" THICK CLADDING (20'x40'x1/2" ALUMINUM CLADDING SYSTEM - CLEAR TEMPERED GLASS PANEL)
- M2.67 1/2" THICK CLADDING (20'x40'x1/2" ALUMINUM CLADDING SYSTEM - CLEAR TEMPERED GLASS PANEL)
- M2.68 1/2" THICK CLADDING (20'x40'x1/2" ALUMINUM CLADDING SYSTEM - CLEAR TEMPERED GLASS PANEL)
- M2.69 1/2" THICK CLADDING (20'x40'x1/2" ALUMINUM CLADDING SYSTEM - CLEAR TEMPERED GLASS PANEL)
- M2.70 1/2" THICK CLADDING (20'x40'x1/2" ALUMINUM CLADDING SYSTEM - CLEAR TEMPERED GLASS PANEL)
- M2.71 1/2" THICK CLADDING (20'x40'x1/2" ALUMINUM CLADDING SYSTEM - CLEAR TEMPERED GLASS PANEL)
- M2.72 1/2" THICK CLADDING (20'x40'x1/2" ALUMINUM CLADDING SYSTEM - CLEAR TEMPERED GLASS PANEL)
- M2.73 1/2" THICK CLADDING (20'x40'x1/2" ALUMINUM CLADDING SYSTEM - CLEAR TEMPERED GLASS PANEL)
- M2.74 1/2" THICK CLADDING (20'x40'x1/2" ALUMINUM CLADDING SYSTEM - CLEAR TEMPERED GLASS PANEL)
- M2.75 1/2" THICK CLADDING (20'x40'x1/2" ALUMINUM CLADDING SYSTEM - CLEAR TEMPERED GLASS PANEL)
- M2.76 1/2" THICK CLADDING (20'x40'x1/2" ALUMINUM CLADDING SYSTEM - CLEAR TEMPERED GLASS PANEL)
- M2.77 1/2" THICK CLADDING (20'x40'x1/2" ALUMINUM CLADDING SYSTEM - CLEAR TEMPERED GLASS PANEL)
- M2.78 1/2" THICK CLADDING (20'x40'x1/2" ALUMINUM CLADDING SYSTEM - CLEAR TEMPERED GLASS PANEL)
- M2.79 1/2" THICK CLADDING (20'x40'x1/2" ALUMINUM CLADDING SYSTEM - CLEAR TEMPERED GLASS PANEL)
- M2.80 1/2" THICK CLADDING (20'x40'x1/2" ALUMINUM CLADDING SYSTEM - CLEAR TEMPERED GLASS PANEL)
- M2.81 1/2" THICK CLADDING (20'x40'x1/2" ALUMINUM CLADDING SYSTEM - CLEAR TEMPERED GLASS PANEL)
- M2.82 1/2" THICK CLADDING (20'x40'x1/2" ALUMINUM CLADDING SYSTEM - CLEAR TEMPERED GLASS PANEL)
- M2.83 1/2" THICK CLADDING (20'x40'x1/2" ALUMINUM CLADDING SYSTEM - CLEAR TEMPERED GLASS PANEL)
- M2.84 1/2" THICK CLADDING (20'x40'x1/2" ALUMINUM CLADDING SYSTEM - CLEAR TEMPERED GLASS PANEL)
- M2.85 1/2" THICK CLADDING (20'x40'x1/2" ALUMINUM CLADDING SYSTEM - CLEAR TEMPERED GLASS PANEL)
- M2.86 1/2" THICK CLADDING (20'x40'x1/2" ALUMINUM CLADDING SYSTEM - CLEAR TEMPERED GLASS PANEL)
- M2.87 1/2" THICK CLADDING (20'x40'x1/2" ALUMINUM CLADDING SYSTEM - CLEAR TEMPERED GLASS PANEL)
- M2.88 1/2" THICK CLADDING (20'x40'x1/2" ALUMINUM CLADDING SYSTEM - CLEAR TEMPERED GLASS PANEL)
- M2.89 1/2" THICK CLADDING (20'x40'x1/2" ALUMINUM CLADDING SYSTEM - CLEAR TEMPERED GLASS PANEL)
- M2.90 1/2" THICK CLADDING (20'x40'x1/2" ALUMINUM CLADDING SYSTEM - CLEAR TEMPERED GLASS PANEL)
- M2.91 1/2" THICK CLADDING (20'x40'x1/2" ALUMINUM CLADDING SYSTEM - CLEAR TEMPERED GLASS PANEL)
- M2.92 1/2" THICK CLADDING (20'x40'x1/2" ALUMINUM CLADDING SYSTEM - CLEAR TEMPERED GLASS PANEL)
- M2.93 1/2" THICK CLADDING (20'x40'x1/2" ALUMINUM CLADDING SYSTEM - CLEAR TEMPERED GLASS PANEL)
- M2.94 1/2" THICK CLADDING (20'x40'x1/2" ALUMINUM CLADDING SYSTEM - CLEAR TEMPERED GLASS PANEL)
- M2.95 1/2" THICK CLADDING (20'x40'x1/2" ALUMINUM CLADDING SYSTEM - CLEAR TEMPERED GLASS PANEL)
- M2.96 1/2" THICK CLADDING (20'x40'x1/2" ALUMINUM CLADDING SYSTEM - CLEAR TEMPERED GLASS PANEL)
- M2.97 1/2" THICK CLADDING (20'x40'x1/2" ALUMINUM CLADDING SYSTEM - CLEAR TEMPERED GLASS PANEL)
- M2.98 1/2" THICK CLADDING (20'x40'x1/2" ALUMINUM CLADDING SYSTEM - CLEAR TEMPERED GLASS PANEL)
- M2.99 1/2" THICK CLADDING (20'x40'x1/2" ALUMINUM CLADDING SYSTEM - CLEAR TEMPERED GLASS PANEL)
- M2.100 1/2" THICK CLADDING (20'x40'x1/2" ALUMINUM CLADDING SYSTEM - CLEAR TEMPERED GLASS PANEL)

GENERAL NOTES

- ALL GLASS TO CONFORM TO CAN/CSA-112-20-100
- WINDOWS IN PUBLIC AREA TO CONFORM TO CBC 2012 3.3.1 (1P-0)
- USE TEMPERED GLASS WHERE REQUIRED TO MEET MINIMUM STRENGTH REQUIREMENTS

CLIENT:
210 Galloway Avenue
OTTAWA, ONTARIO K2P 0Y6
T: (613) 233-8037 F: (613) 233-9250

ARCHITECTS:
EVOQ
4421, RUE SAINT-ALEXANDRE, BUREAU 1000
MONTRÉAL, QUÉBEC H3A 2M4
T: 514 393-3400 F: 514 393-3498
info@evoo.ca evoo.ca

LANDSCAPE ARCHITECTS:
James B. Lennox and Associates Inc.
Landscape Architects
361 Hester Avenue South
Ottawa, Ontario, K1Y 1A6 T: (613) 722-9166

STRUCTURAL ENGINEERS:
GOODEVE STRUCTURAL INC.
1000 Carling Ave. Suite 530
Ottawa, ON K1Z 1G2
Tel: (613) 233-1186
smthanderson.com

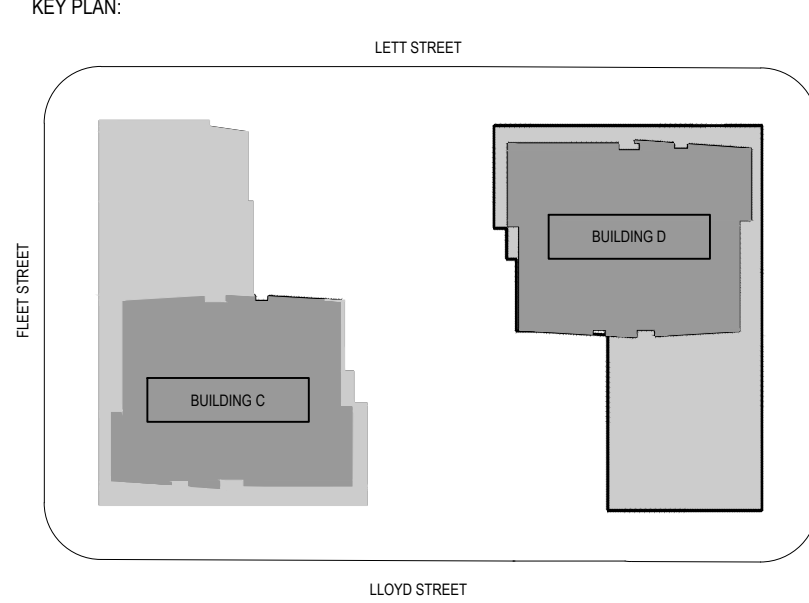
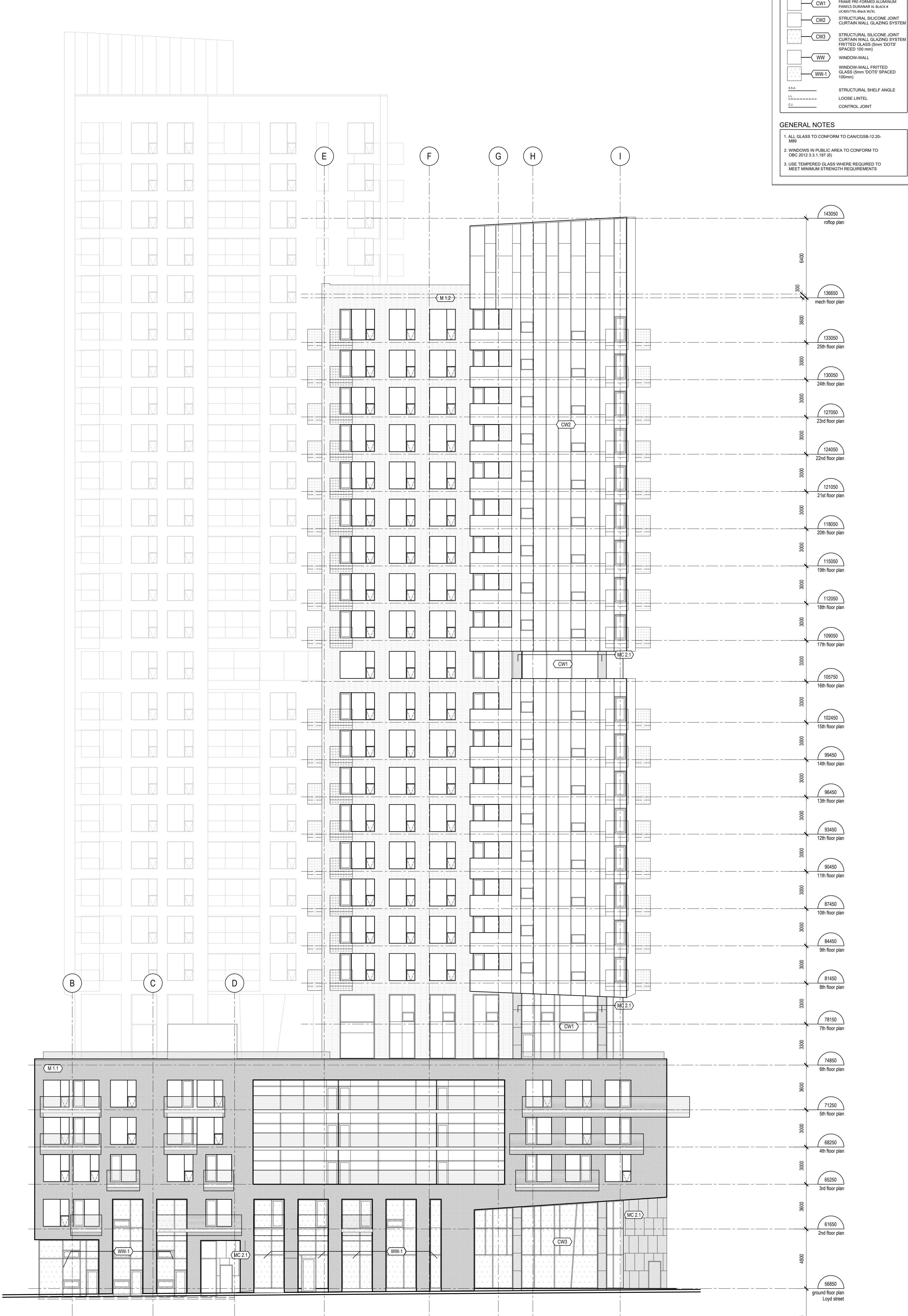
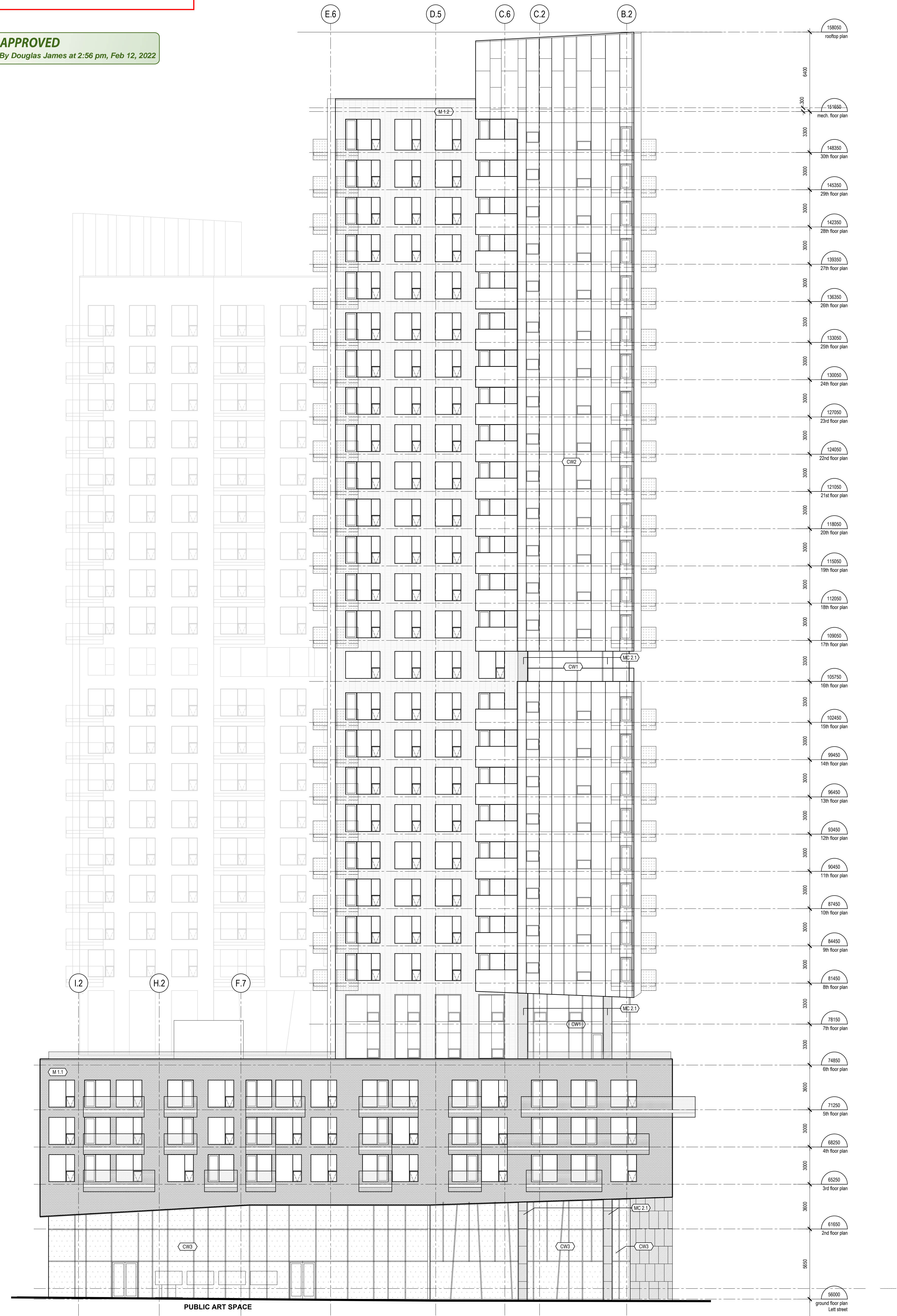
MECHANICAL - ELECTRICAL ENGINEERS: **Smith + Andersen**
1600 Carling Ave. Suite 530
Ottawa, ON K1Z 1G2
Tel: (613) 233-1186
smthanderson.com

TOPOGRAPHICAL SURVEYOR:
Stantec
1331 Clyde Ave Suite 400
Ottawa, ON K1C 3K4
Tel: (613) 722-4420
stantec.com

CIVIL ENGINEERS:
NOVATECH ENGINEERING CONSULTANTS INC.
197 Spadina Avenue Suite 600
Toronto, ON M5T 2C8
Tel: (416) 593-8004
urbanstrategies.com

URBAN DESIGN CONSULTANTS:
URBAN STRATEGIES INC.
197 Spadina Avenue Suite 600
Toronto, ON M5T 2C8
Tel: (416) 593-8004
urbanstrategies.com

KEY PLAN:
LEFT STREET
FLEET STREET
LLOYD STREET
RIGHT STREET



NO.	DESCRIPTION	BY	DATE
3	ISSUED FOR REVISED SITE PLAN APPROVAL	MG	2021-04-07
2	ISSUED FOR REVISED SITE PLAN APPROVAL	MG	2021-03-10
1	ISSUED FOR COORDINATION - STRUCTURAL	JG	2021-03-01
0	ISSUED FOR COORDINATION	JG	2021-02-26

REVISION:

NO.	DESCRIPTION	BY	DATE
3	ISSUED FOR REVISED SITE PLAN APPROVAL	MG	2021-04-07
2	ISSUED FOR REVISED SITE PLAN APPROVAL	MG	2021-03-10
1	ISSUED FOR COORDINATION - STRUCTURAL	JG	2021-03-01
0	ISSUED FOR COORDINATION	JG	2021-02-26

THE GENERAL CONTRACTOR:

- SHALL BE RESPONSIBLE FOR VERIFYING ALL DIMENSIONS ON SITE TO ENSURE COMPLIANCE WITH THE DIMENSIONS GIVEN ON THE DRAWINGS.
- SHALL BE RESPONSIBLE TO IMMEDIATELY SUBMIT A REPORT TO THE ARCHITECT OR ENGINEER ON ANY INACCURACIES.
- SHALL NOT TAKE SCALED MEASUREMENTS OFF THE DRAWINGS.
- ANY INDIVIDUAL OR FIRM THAT HAVE RECEIVED ELECTRONIC DOCUMENT SHALL USE THEM AT THEIR OWN RISK. ONLY ORIGINAL DRAWINGS, STAMPED BY THE ARCHITECT, MAY BE USED FOR CONSTRUCTION.

SEAL: © 2018, EVOQ Architecture Inc.
Intellectual property rights relating to this document being exclusively to EVOQ Architecture Inc. This document may not be forwarded to others, transmitted, downloaded, reproduced or stored in any form, whether print or electronic, without the prior written authorization of EVOQ Architecture Inc. All ideas and other information in this document are specific to this project and may not be used elsewhere without the written authorization of EVOQ Architecture Inc.

PROJECT:
LEBRETON - PHASE 4-5

DRAWING TITLE:
FLEET AND LETT STREETS ELEVATIONS

DESIGN: NG APPROVED: NG
DRAWN: HLE/PSJ DATE: 2020-01-13
VERIFIED: NG SCALE: 1:200
PROJECT NO: 9360-20 DRAWING NO: A-302