

NOTE: ELEVATIONS ARE FOR REFERENCE OF OVERALL DESIGN. REFER TO A330 SERIES OF UNFOLDED ELEVATIONS FOR DIMENSIONAL INFORMATION.

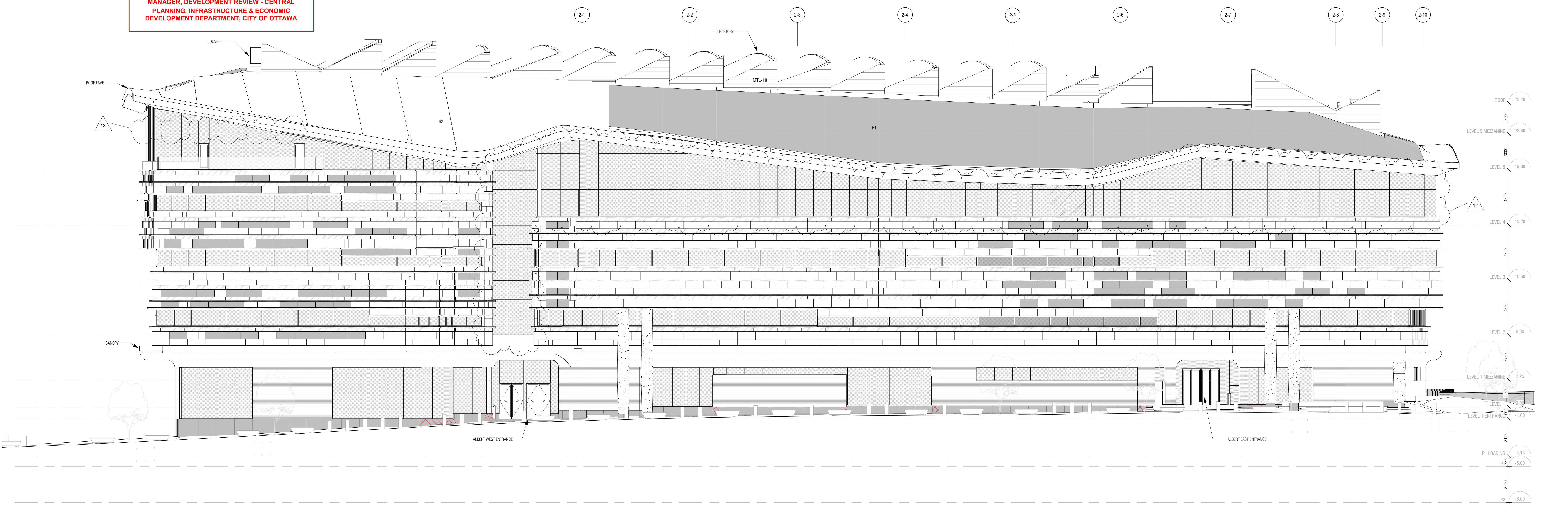
12

1 OVERALL ELEVATION - PROJECT NORTH
A301 1:125

DJ

DOUGLAS JAMES, MCIP, RPP
MANAGER, DEVELOPMENT REVIEW - CENTRAL
PLANNING, INFRASTRUCTURE & ECONOMIC
DEVELOPMENT DEPARTMENT, CITY OF OTTAWA

APPROVED
By Douglas James at 11:41 am, Oct 28, 2021



NOTE: ELEVATIONS ARE FOR REFERENCE OF OVERALL DESIGN. REFER TO A330 SERIES OF UNFOLDED ELEVATIONS FOR DIMENSIONAL INFORMATION.

12

2 OVERALL ELEVATION - PROJECT SOUTH
A301 1:125

LEGEND - UNFOLDED ELEVATIONS

- HATCH INDICATES BIRDSAFE GLASS REFER TO A058 FOR CONFIGURATION
- SHADED PATTERN INDICATES SPANDREL OR ACID ETCH GLASS TYPE WITH "F" SURFACE GLASS REFER TO TAG AND A052 FOR GLASS BUILD-UP
- HATCH INDICATES CURVED-STONE PANELS
- HATCH INDICATES ST18+H8 COURSE
- HATCH INDICATES ALUMINIUM FIN (FN-1 or FN-2)
- FOLD LINE (APPLICABLE TO A330 SERIES)
- FIRE BLOCKING (APPLICABLE TO A330 SERIES)
- JUNCTION BOX REFER TO ELECT. DRAWINGS FOR QUANTITY AND LAYOUT (APPLICABLE TO A330 SERIES)
- HOSE BIB (REFER TO MECH. DRAWINGS) (APPLICABLE TO A330 SERIES)
- POWER OUTLET REFER TO ELECT. DRAWINGS (APPLICABLE TO A330 SERIES)

GENERAL NOTES:

- FOR HORIZONTAL SPACING REFER TO PARTIALS PLANS.
- ALL EXTERIOR GLASS HAS BIRDSAFE GLASS FINIT U.N.O.
- SITE MEASURE ALL SLOPING CURTAIN WALL FRAMING.

Diamond Schmitt Architects
KWC Architects Inc.
Architects in Joint Venture for the OPLAC Joint Facility
354 Adelaide Street West, Suite 100, Toronto, Canada M5H 1P7
Tel: 416 862 8800 Fax: 416 862 5508 info@dsai.ca www.dsai.ca

OTTAWA PUBLIC LIBRARY - LIBRARY AND ARCHIVES CANADA JOINT FACILITY

555 Albert St. Ottawa, ON, K1R 7X3

OVERALL ELEVATIONS - PROJECT NORTH & SOUTH

Scale: As indicated
Project No: 1855
Date: