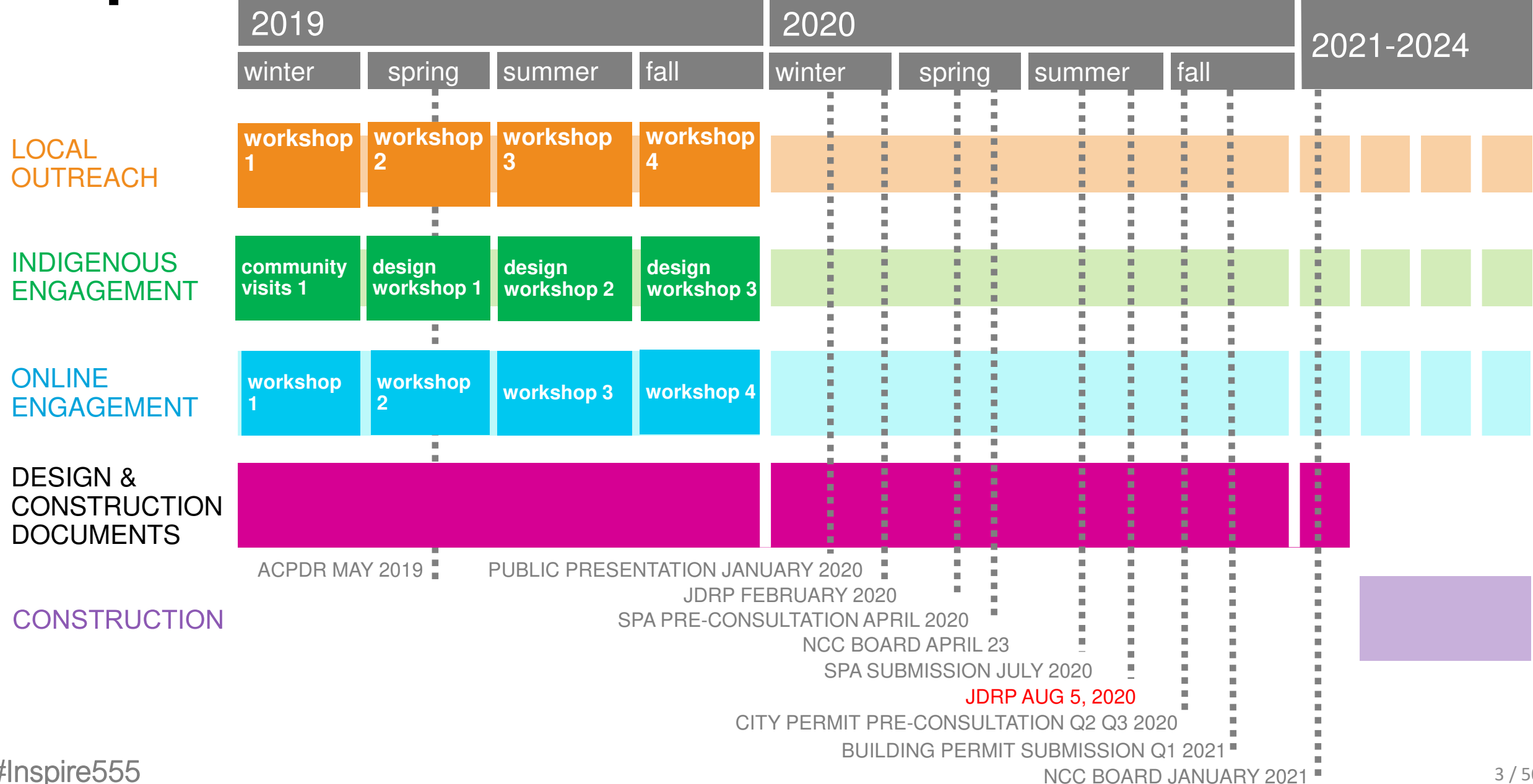


Introduction by NCC/City Staff

Ottawa Public Library Library and Archives Canada Joint Facility

Joint Design Review Panel
August 5th, 2020

Inspire555 Schedule





close to 1300 participants
attended 10 in-person
workshop sessions

close to 3000 participated in online engagement activities

Contact Us Français

Project Progress News Get involved Inspiration

Get involved

Register now for the workshop on Spaces and Relationships!

Bring your inspiration and input to this exciting project! The workshops will explore how spaces inside the new facility complement one another, the exterior and the views. Participants will also have the chance to take a fresh look at what LAC and OPL spaces and services will be offered in the new facility, and help inspire the design.

Register →

Stay up to Date

* indicates required

Email Address *

Subscribe

The Inspire555 Series

You told us what you want in a new Central Library and joint facility with Library and Archives Canada. You helped us decide where to build it. Now it's time for you – whether you live in Ottawa, Vancouver, St-John or Iqaluit – to inspire how it will come to life!

Read More →



3 Indigenous design workshops community visits national and urban consultation

project update:

urban context
landscape design
building design
Indigenous design features

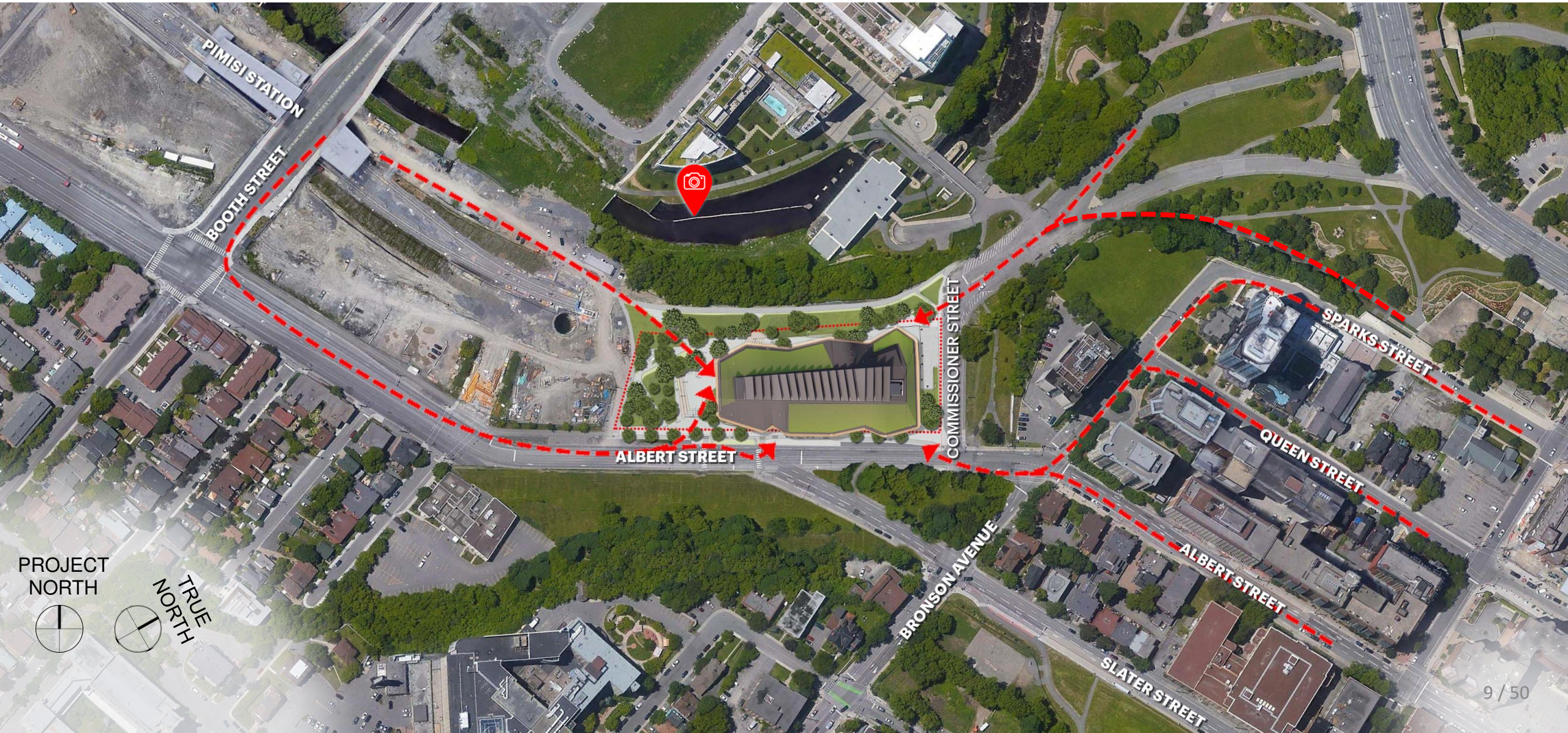
Urban Context

LeBreton Flats Concept Masterplan



Urban Context

Site Connectivity with the Future Context



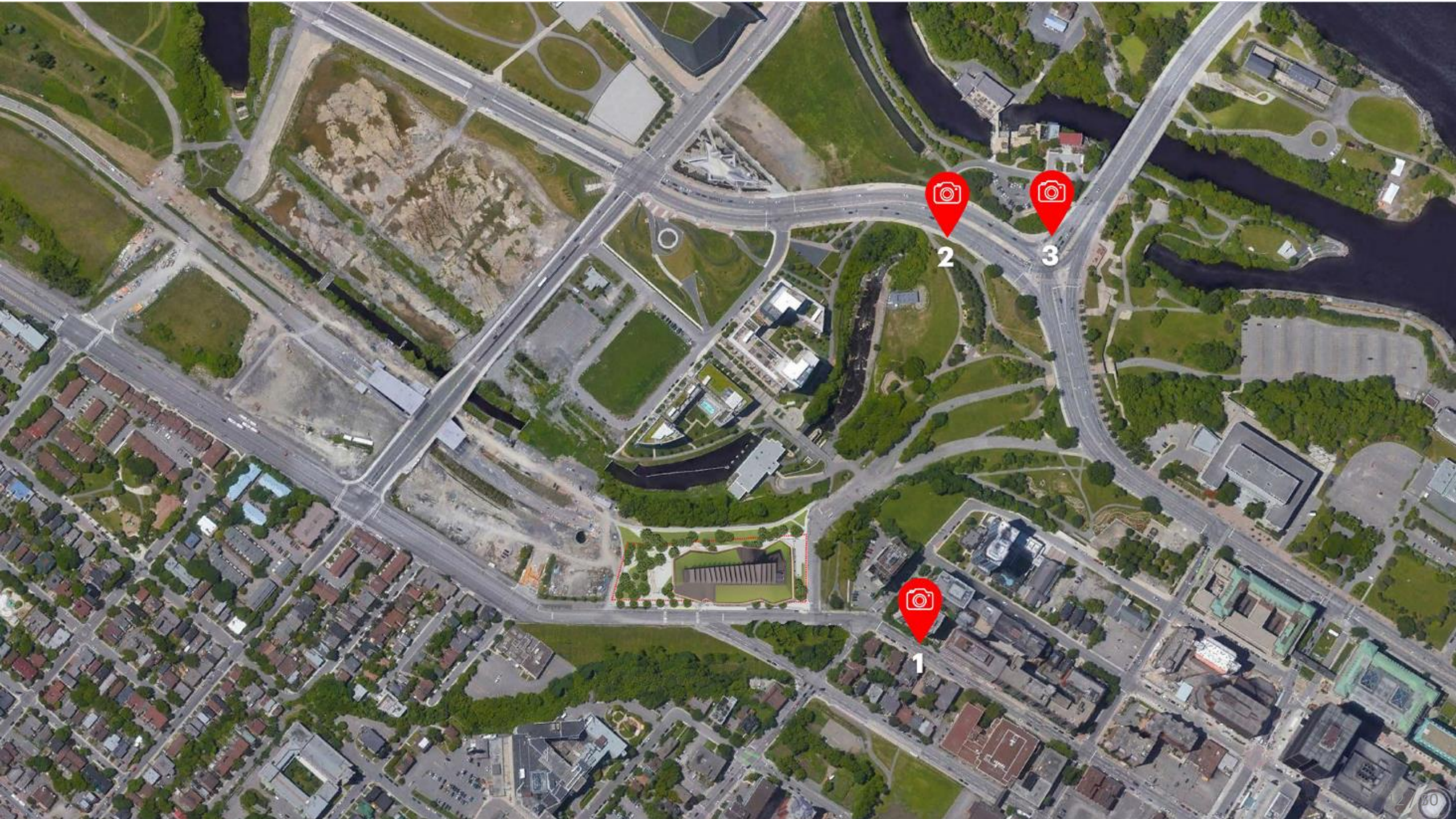
Urban Context
Skyline View



Urban Context

View From the Building





2



3



1







Urban Context

Albert Street Corridor



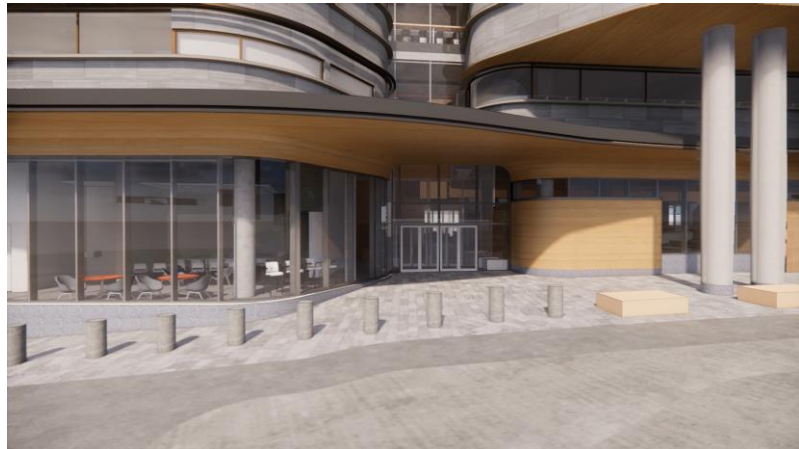
KEYMAP



01



02



03



04



05

Urban Context

Albert Street Corridor Animation



Landscape Design

Updated Landscape Design



Ottawa Public Library
Library and Archives Canada
Joint Facility

COMMISSIONER STREET

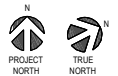
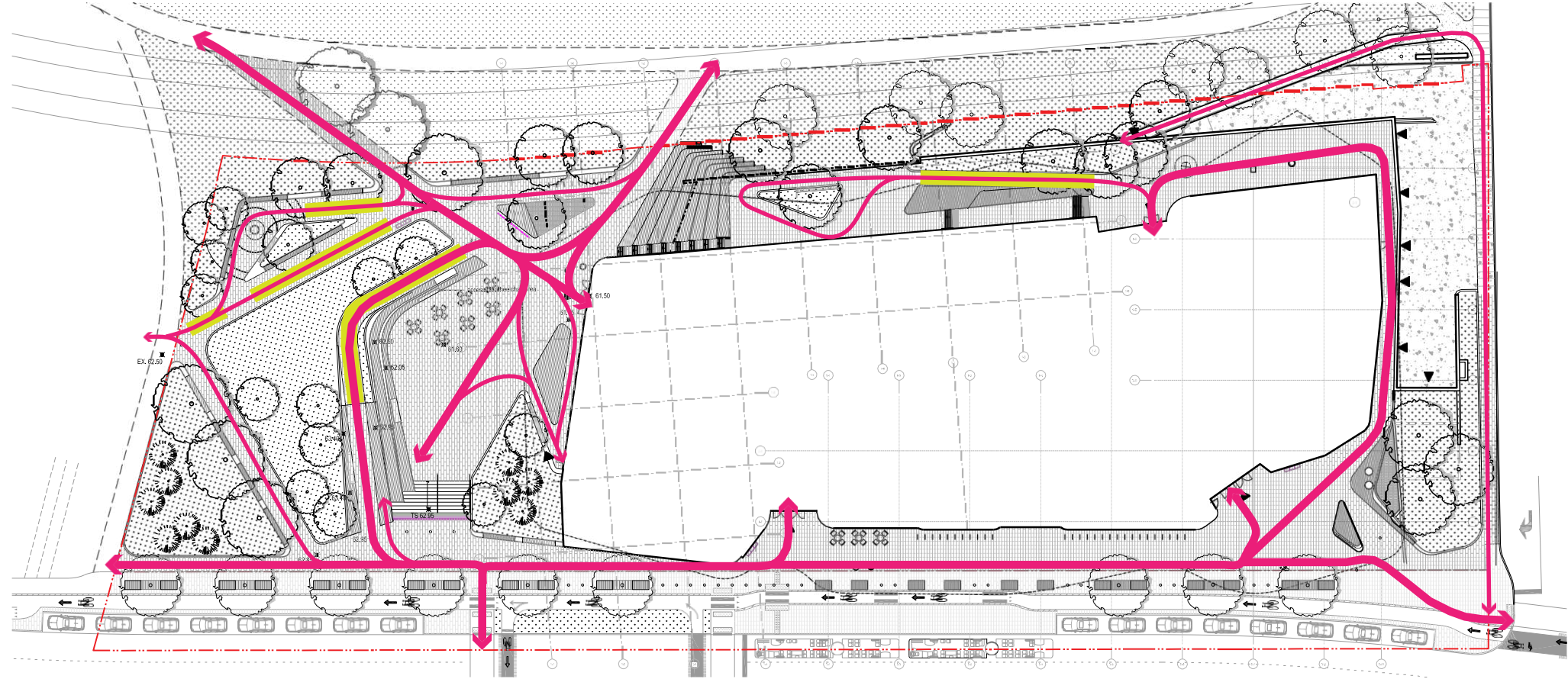
ALBERT STREET

PROJECT
NORTH



Site Plan – Accessible Routes

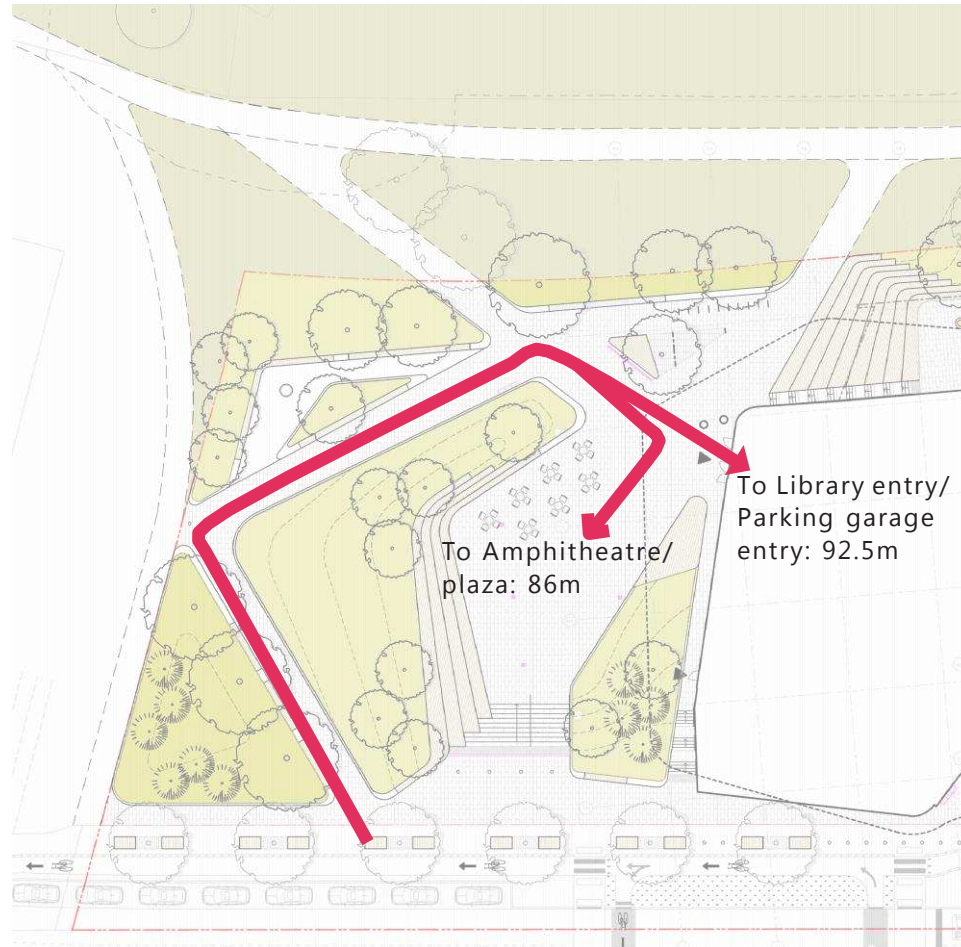
- Universal Access Circulation:
- pathway with less than 2% slope
 - Pathway with 2% - 5% slope



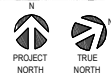
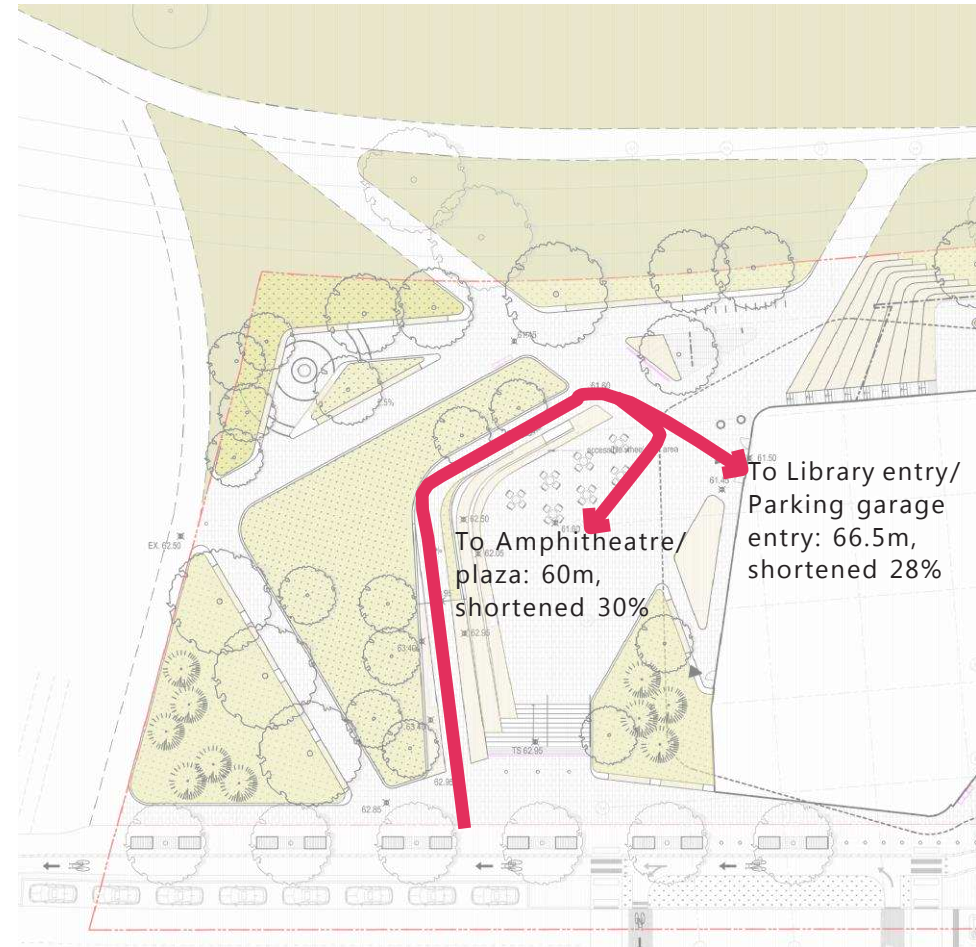
Landscape Design

Site Plan – Accessible Routes

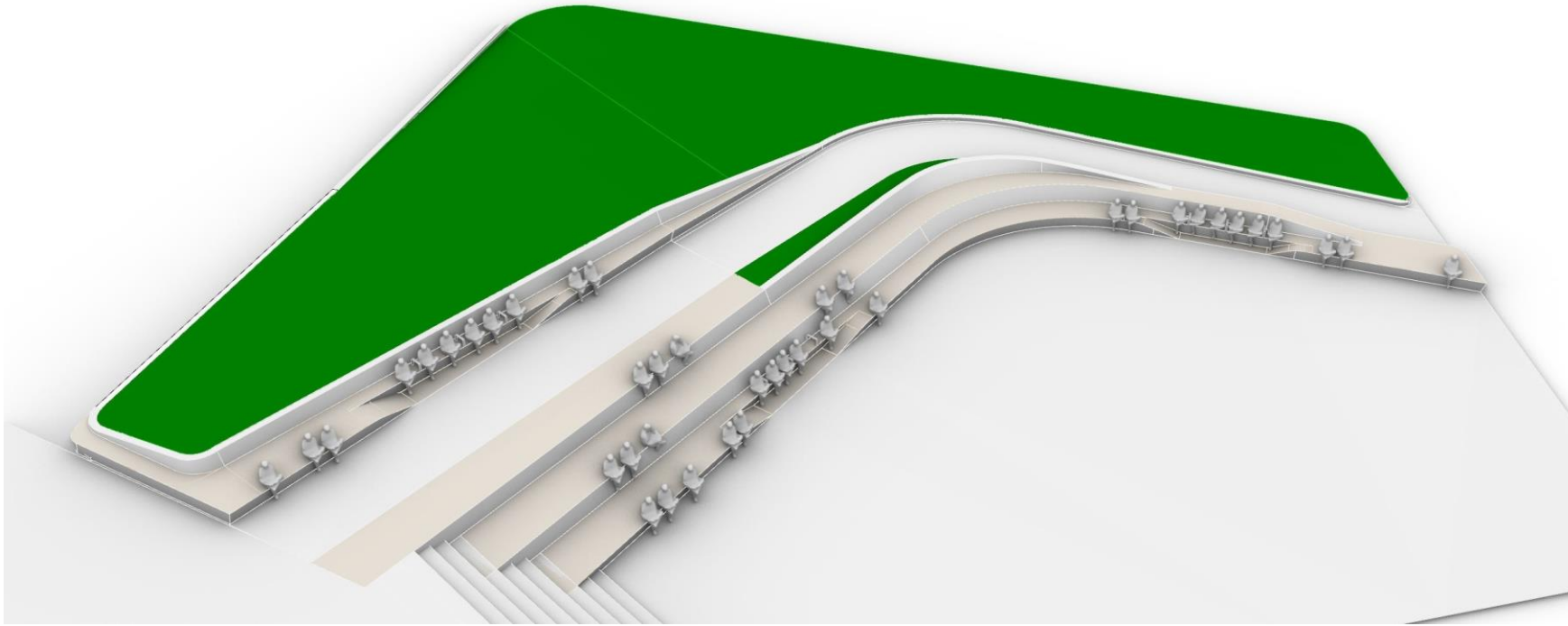
OLD PLAZA CIRCULATION



NEW PLAZA CIRCULATION





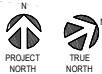
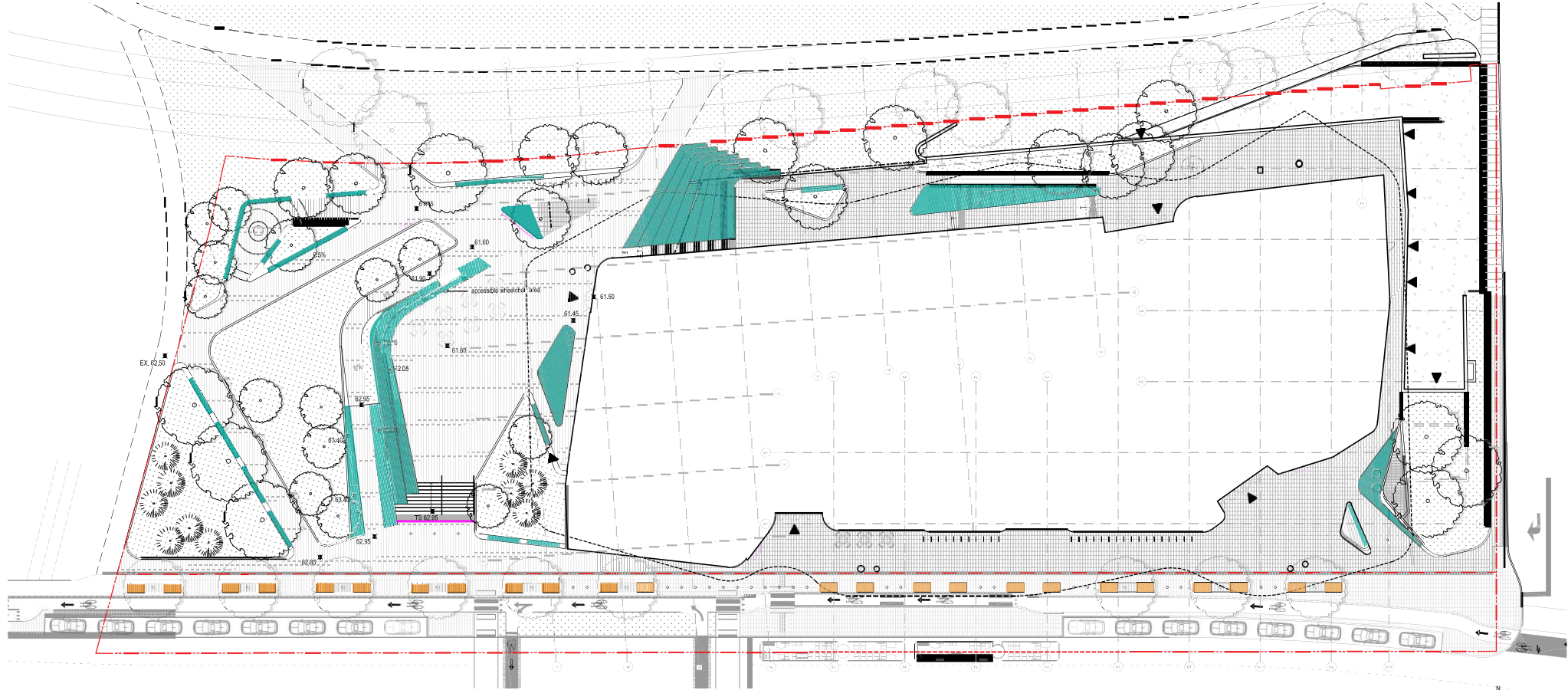
Accessible Routes – Paving / Pattern



Landscape Design






Accessible Seating

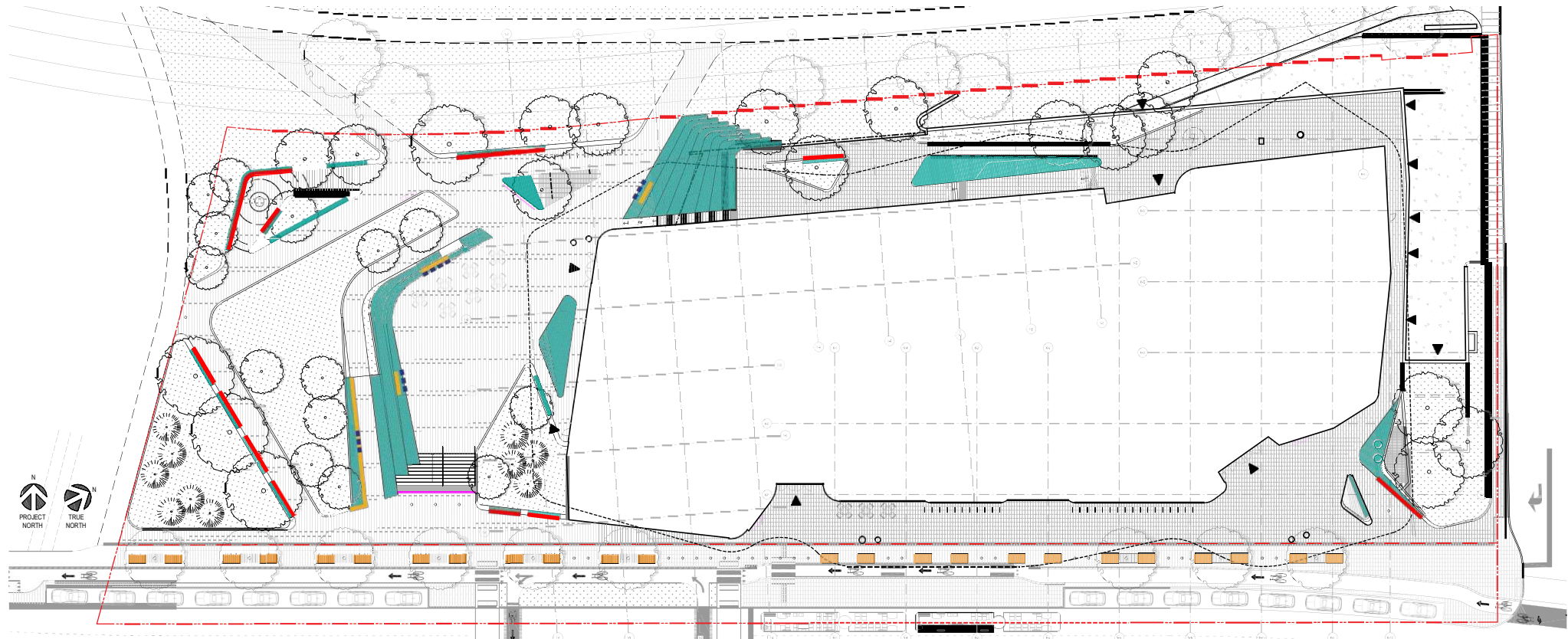
-  Total seating space: 437.5 lm
-  Total Albert Blvd seating (offsite): 124.8lm



Landscape Design

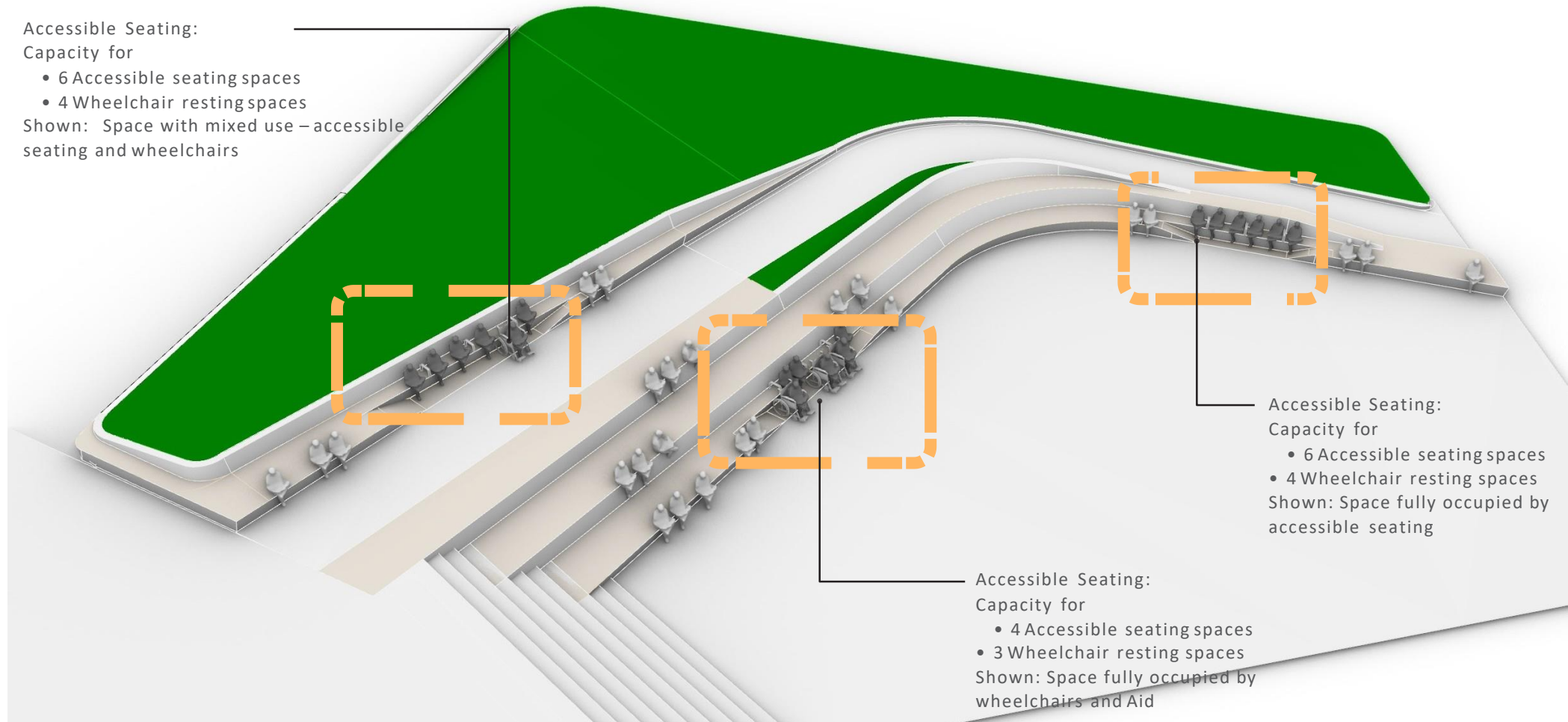
Accessible Seating

Type		Seating (0.5m/person, 1m/wheelchair)
On Site	 Total Seating (437.5 m)	875
	Total Targeted Accessible Seating (20% total site seating)	175
	Total Achieved Accessible Seating	154+42 = 196
	 • Accessible Bench	154
	 • Accessible Amphitheater	42
	 Total Wheelchair Resting Spots	13
	Total Movable Tables and Chairs	TBD, currently 28 seats shown
Off Site	 Total Seating Albert Boulevard (124.8m)	249



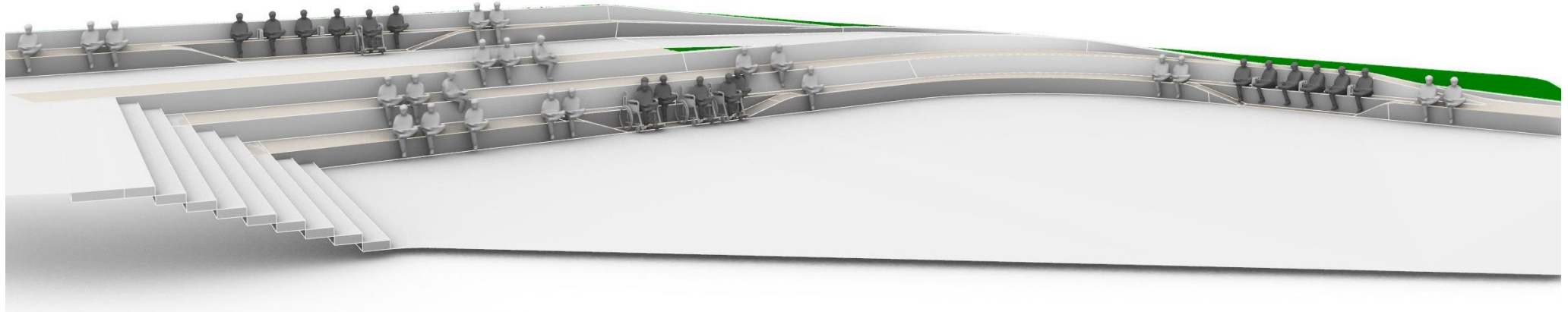
Landscape Design

Accessible Seating



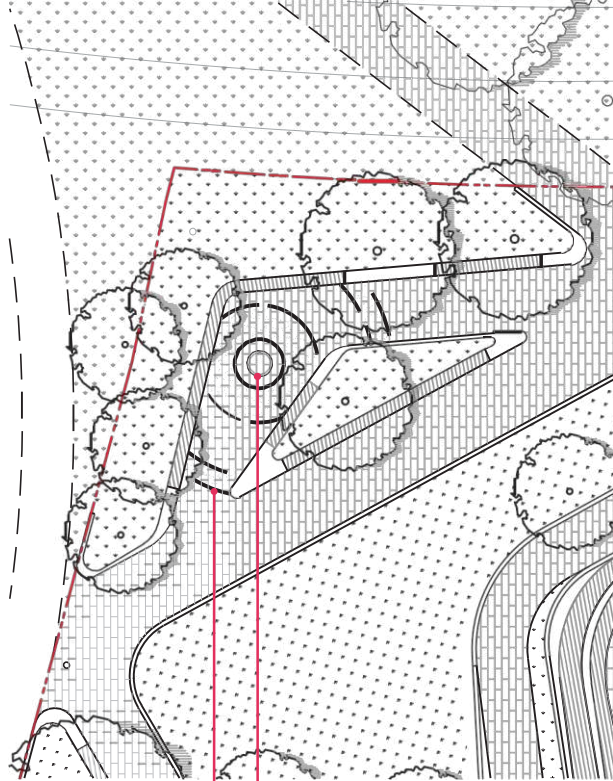
Landscape Design

Accessible Seating



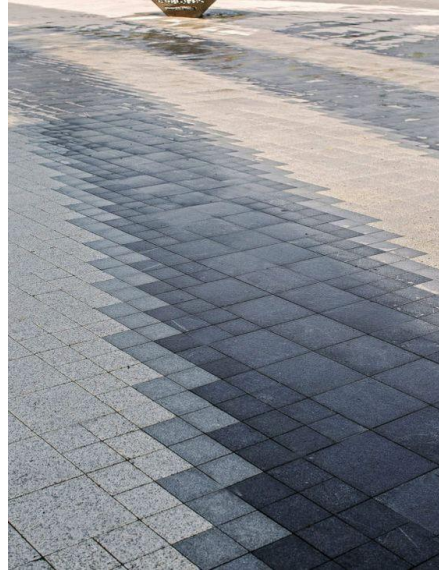
Landscape Design

Gathering Circle



Center could reference in some way the Indigenous Art or Space on the Terrace

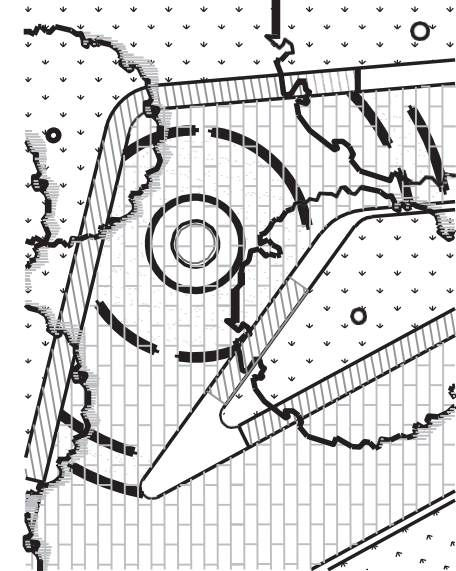
Noncontinuous circular stone bands



Stone band integrated in concrete unit paving



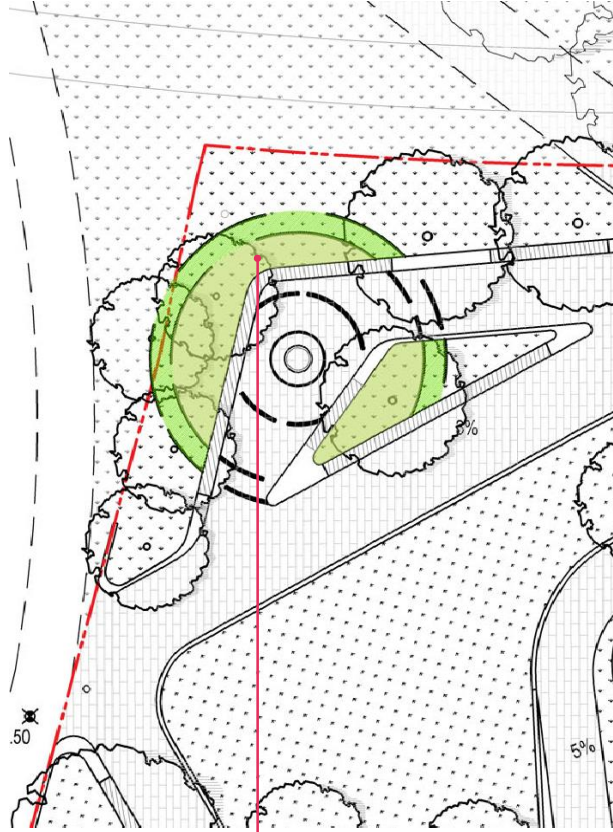
Texture and material indicate indigenous art



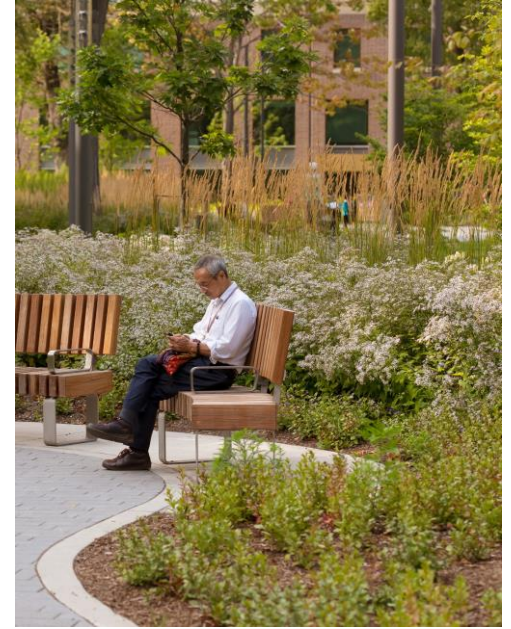
Detailed paving pattern

Landscape Design

Gathering Circle



Layered planting with indigenous planting species



Precedents: layered planting

Planting Strategies: Planting Palette

SPRING / SUMMER

* NOTE: PLANT SPECIES TRADITIONALLY USED BY LOCAL FIRST NATIONS

TREES



SUGAR MAPLE* RIVER BIRCH* SERVICE BERRY* EVERGREEN FIR

SHRUBS



CORNUS SPS* FOTHERGILLA MYRICA RHUS AROMATICA*



ILEX VERTICILLATA* HAMAMELIS VIRGINIANA* TAXUS X MEDIA

GRASS/ GROUND COVER/ PERENNIALS



CALAMAGROS- DESCHAMPسيا FILIPENDULA WHITE ASTER*



ECHINACEA* ANEMONE CANADENSIS* ARTEMESIA LUDOVICIANA* ACHILLEA MILLEFOLIUM*

FALL / WINTER

TREES



SUGAR MAPLE RIVER BIRCH SERVICE BERRY EVERGREEN FIR

SHRUBS



CORNUS SERICEA MYRICA PENSYL- RHUS AROMATICA



ILEX VERTICILLATA HAMAMELIS VIRGINIANA TAXUS X MEDIA

GRASS/ GROUND COVER/ PERENNIALS



CALAMAGROS- DESCHAMPسيا FILIPENDULA WHITE ASTER



ECHINACEA ANEMONE CANADENSIS ARTEMESIA LUDOVICIANA ACHILLEA MILLEFOLIUM

Landscape Design

Planting Strategies

- 1.** West Entries
Scale and Colour
- Trees that are an appropriate compliment to the scale and massing of the building.
 - Focal point for distant views and provide a 'gateway'.

- 2.** Gathering Circle + Greenway edge
Density and Texture
- Mix of smaller scale trees to support an intimate garden space.
 - Coniferous trees that provide an evergreen buffer from the adjacent lot.
 - Multi-stem woodland flowering trees that provide a lightly veiled canopy, filtered views out to the greenway and an appropriate transition species to blend into naturalized greenway planting.

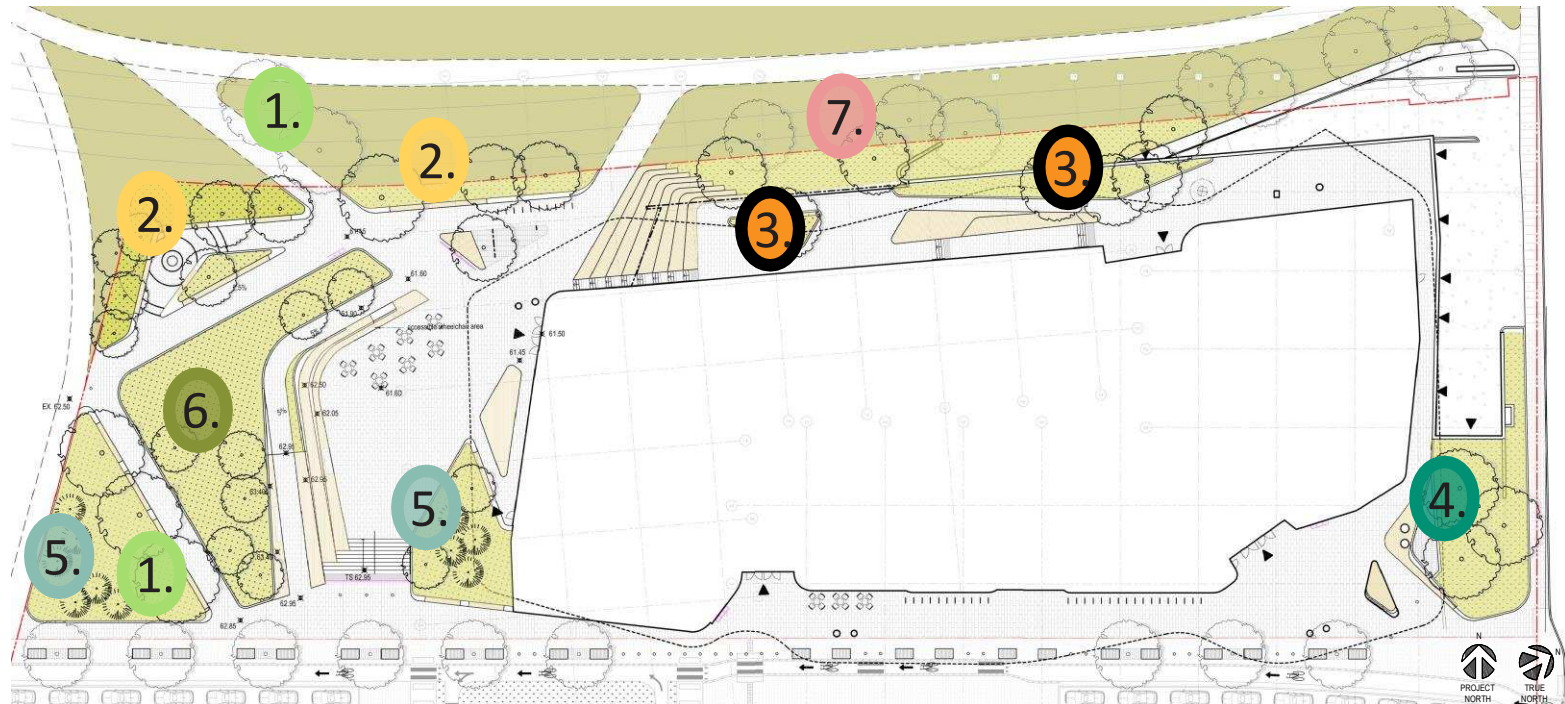
- 3.** Terrace
Colour and Scale
- Evergreen species and deciduous material with seasonal interest to ensure views out from the library provide year round interest.
 - Appropriate scale of tree to ensure views out are not compromised.

- 4.** Southeast Entry
Scale and Density
- Trees that are an appropriate compliment to scale and massing of the building.
 - A robust understory of planting that creates an urban edge and is suitable for providing screening.

- 5.** Plaza Entry and Street Edge
Density and Colour
- Flowering trees to frame stairs to create a welcoming entrance as well as provide seasonal interest.
 - Evergreen trees to provide buffer from street and building.

- 6.** Lawn
Texture and Density
- Open lawn to provide occupied green space.
 - Informal tree planting for shade and seasonal interest.

- 7.** Berm and Greenway transition
Texture and Density
- Informal grouping of trees and naturalized grass planting to transition to greenway.



Landscape Design

Planting Strategies – Example

1. West Entries *Scale and Colour*



2. Gathering Circle + Greenway edge *Density and Texture*

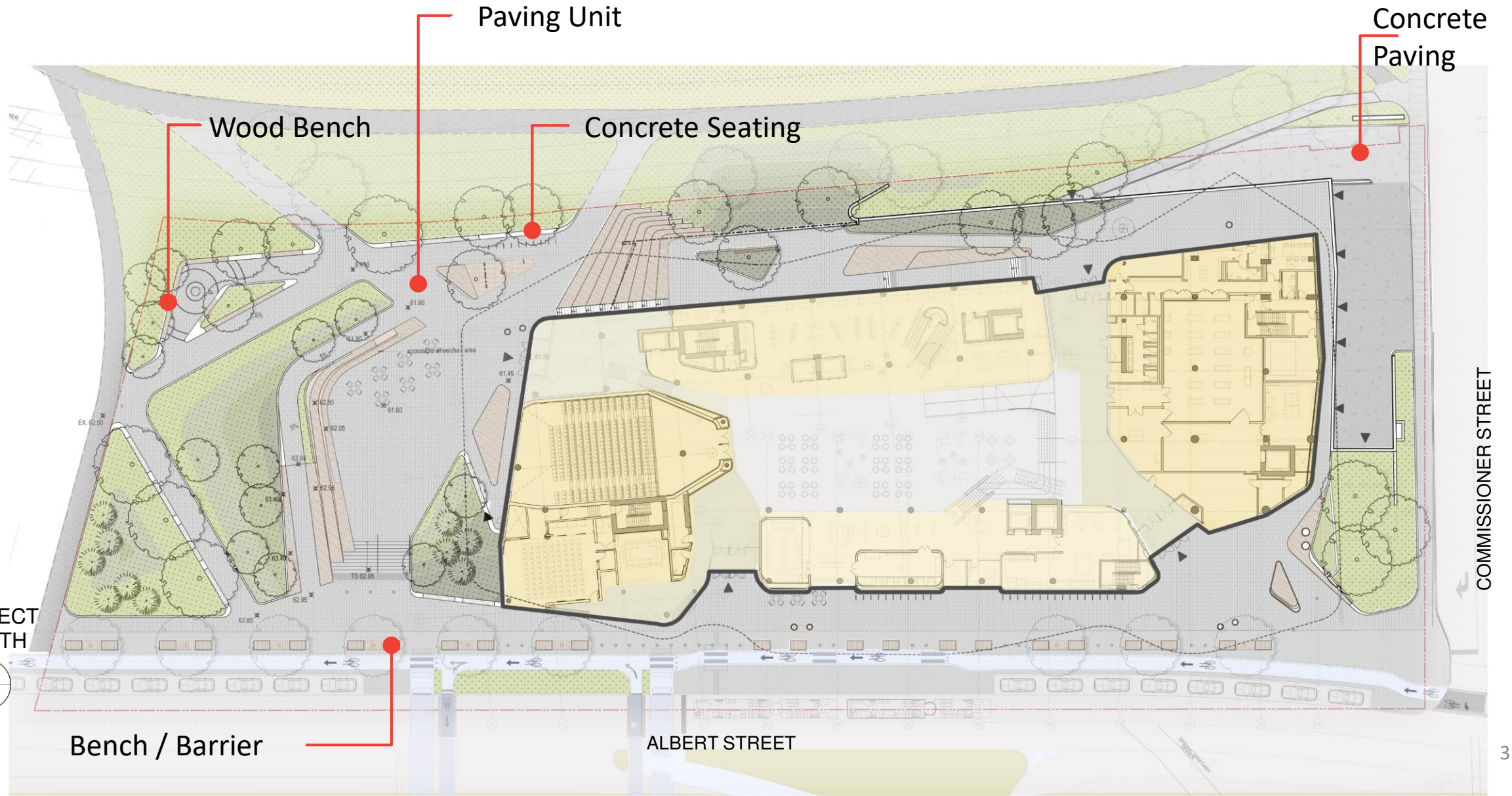


4. Southeast Entry *Scale and Density*

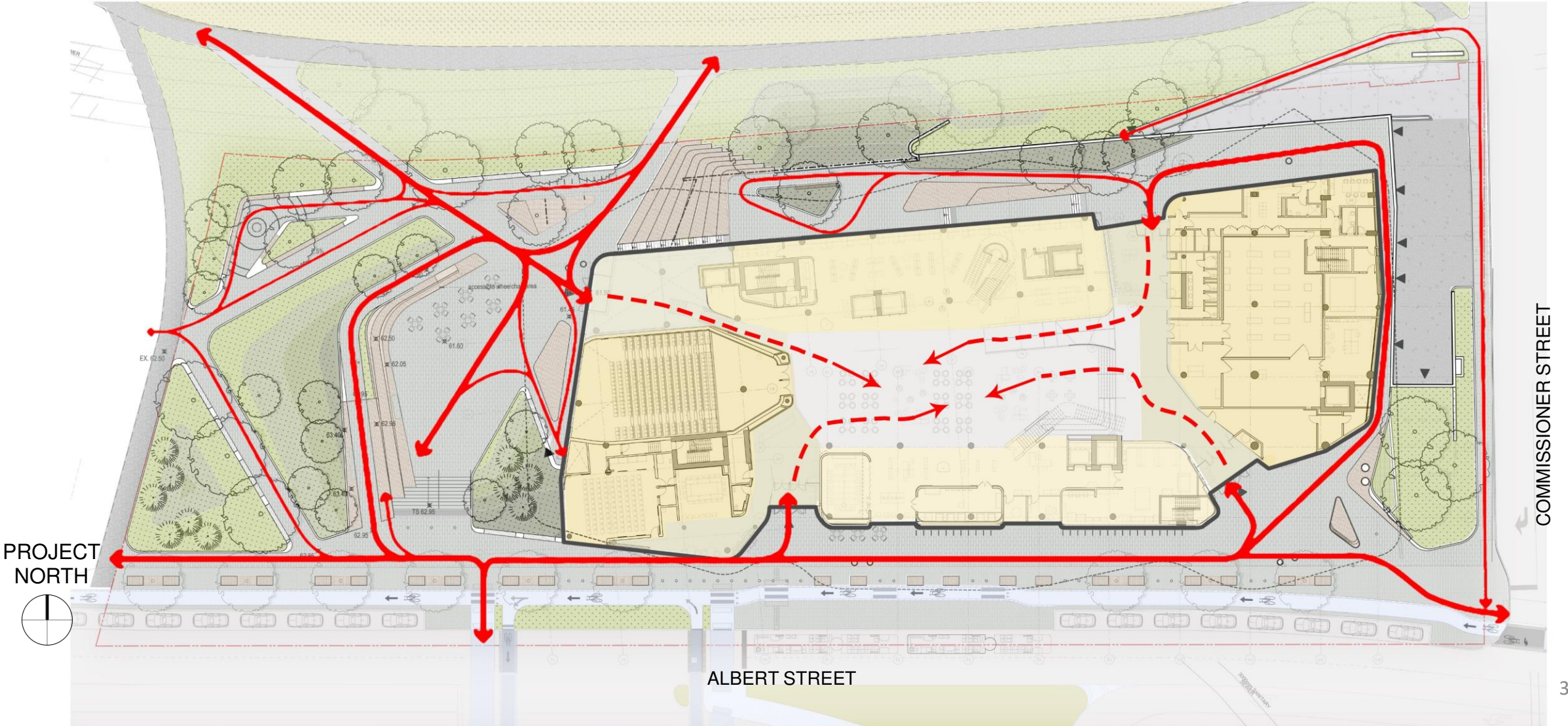


Landscape Design

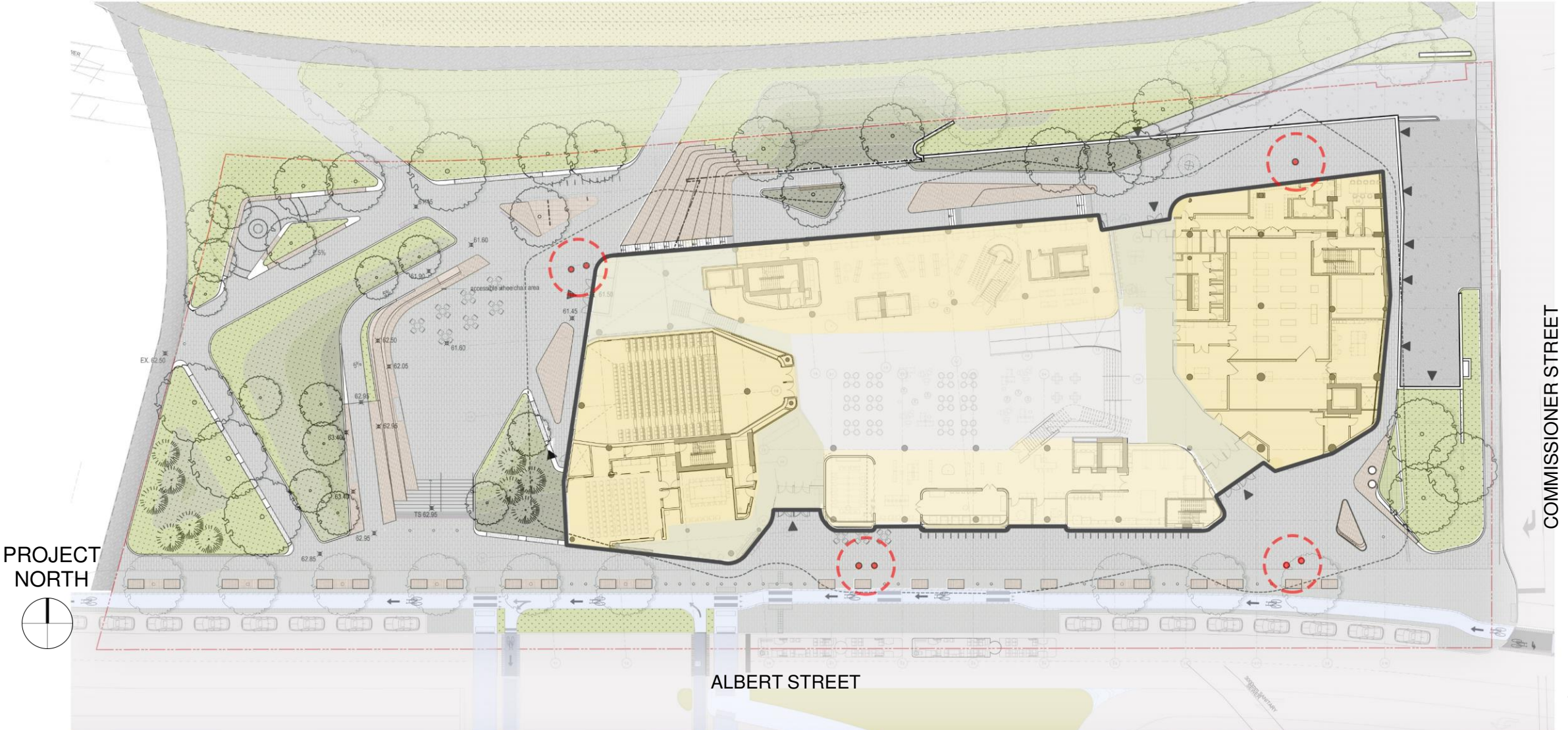
Paving Materials



Pathways Converge - Entrances and Townhall



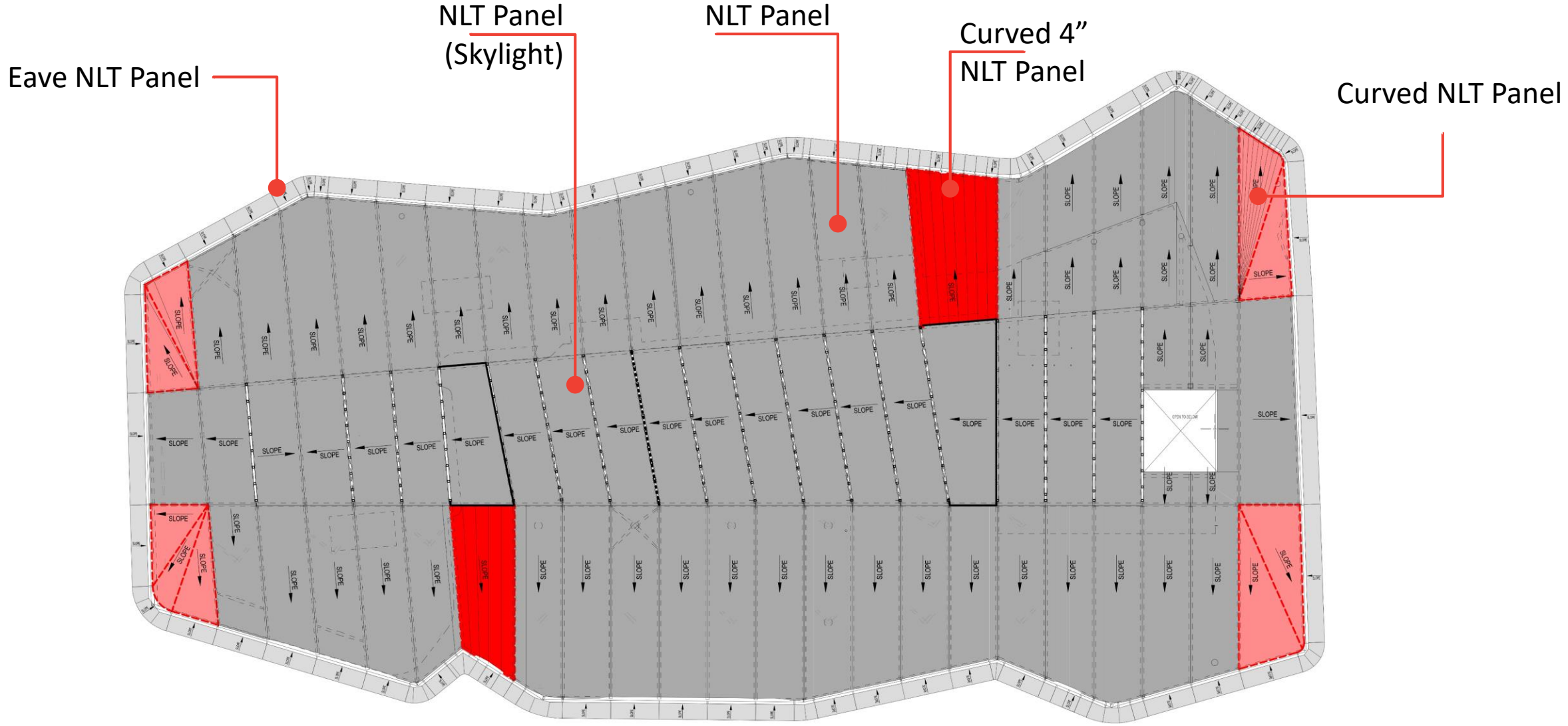
Pathways Converge - 'Artwork Integrated into Feature Columns'



Integration of Roof Architecture



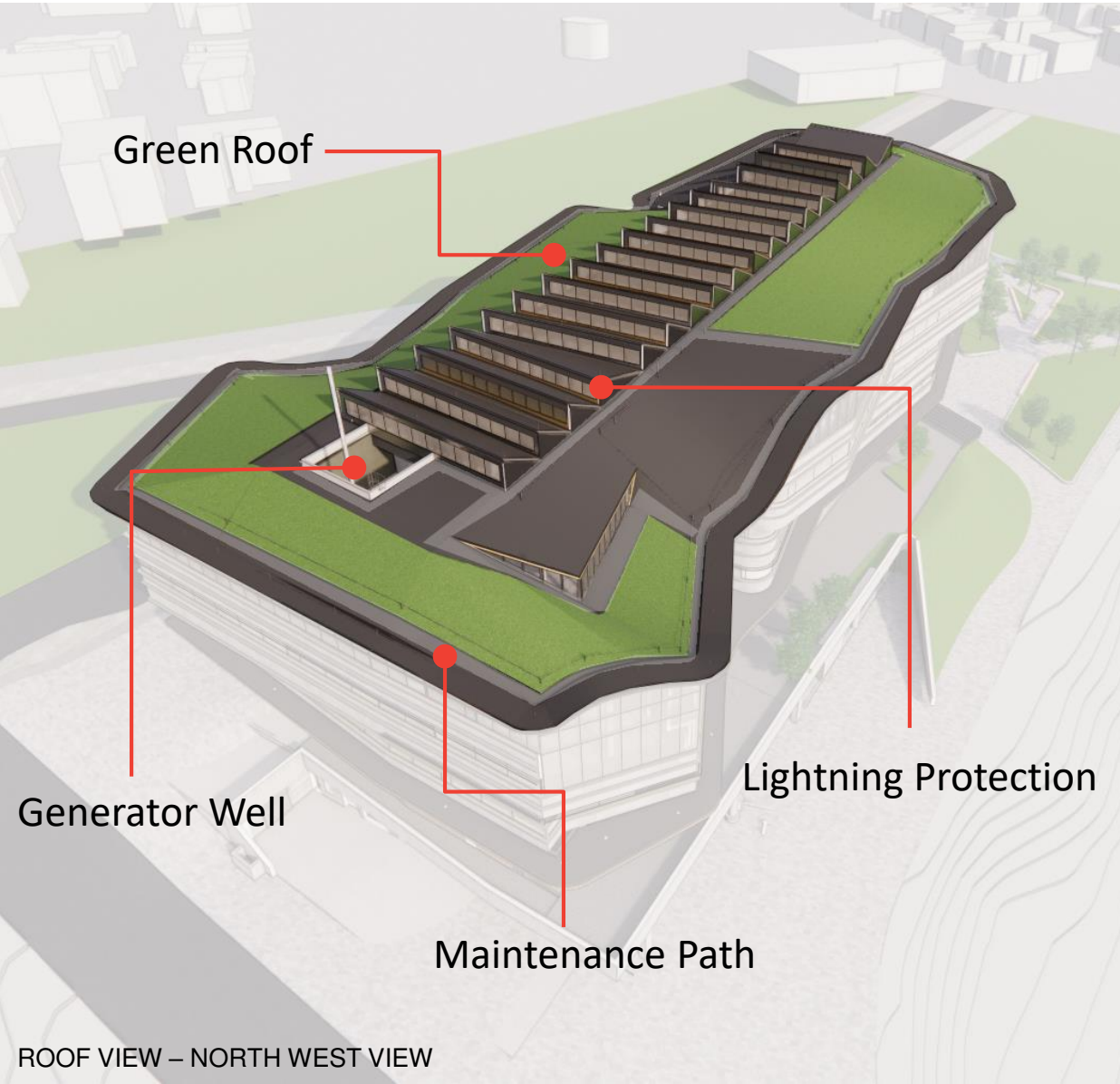
Structural Roof Panels



PROJECT
NORTH

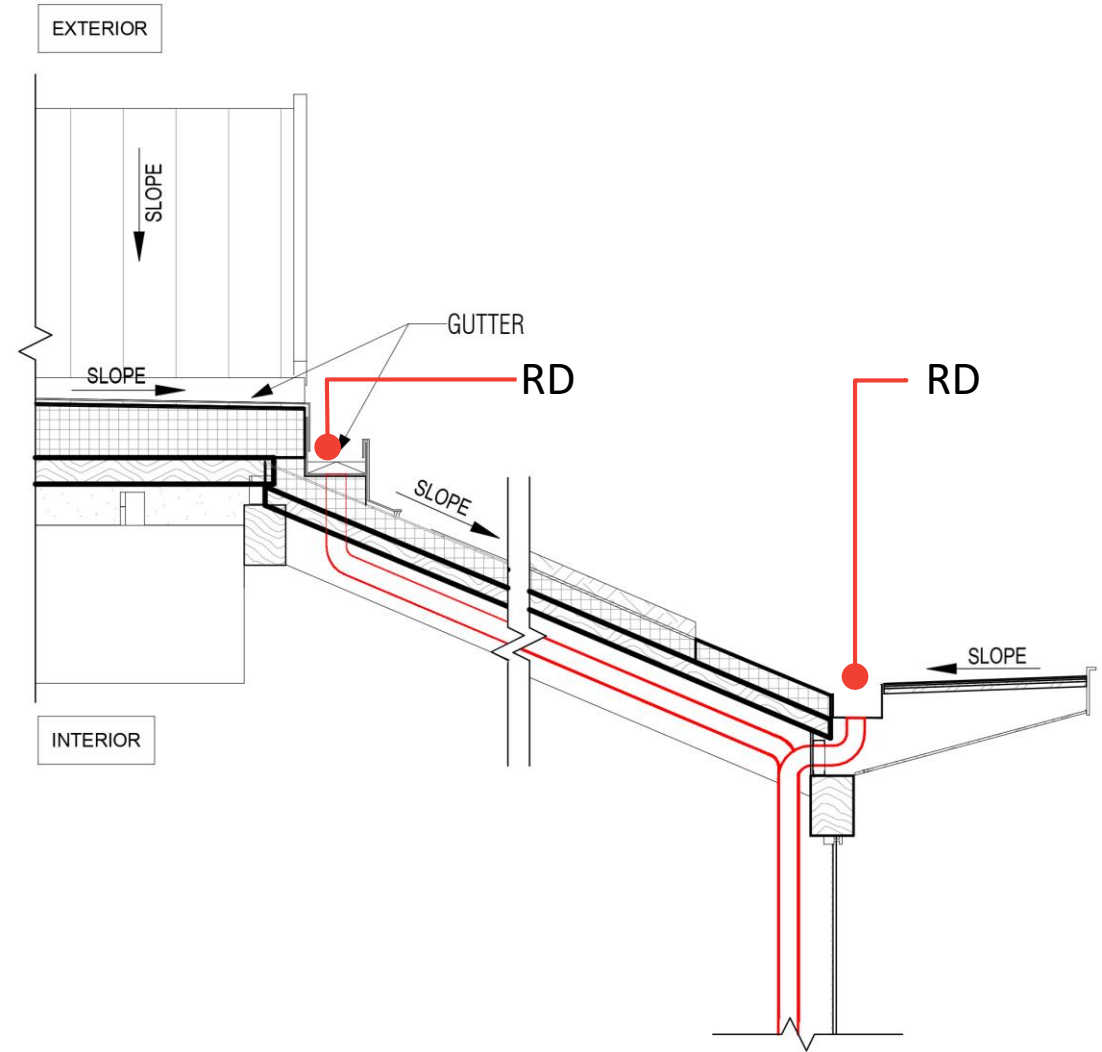
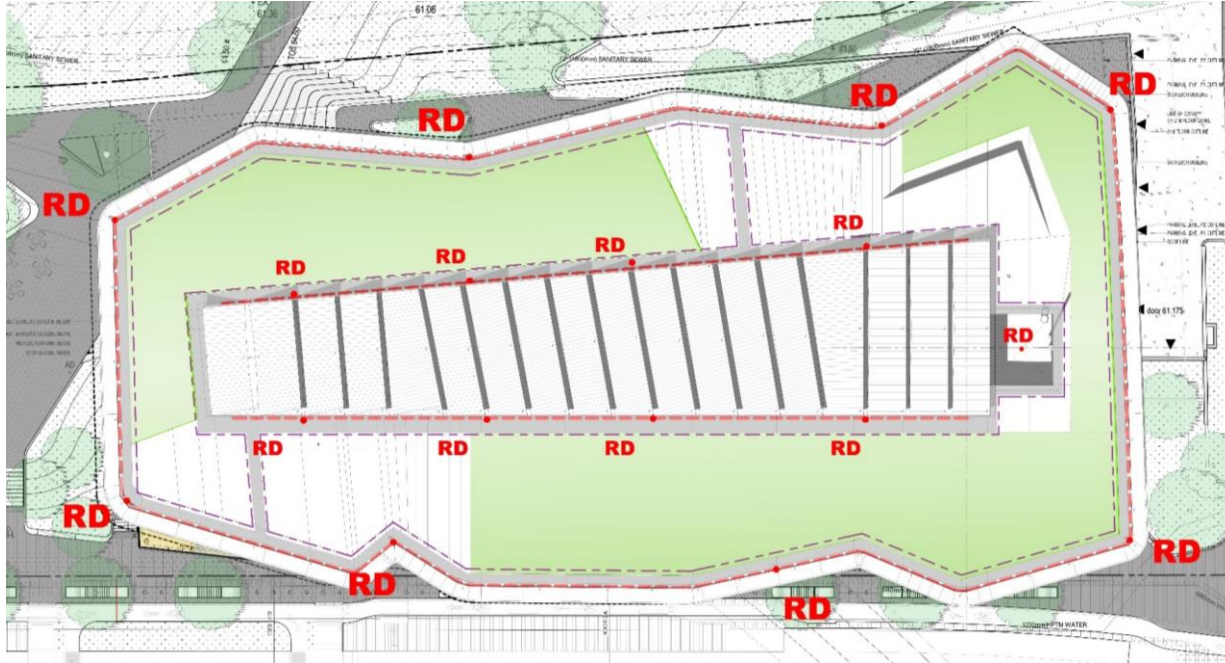


Integration of Roof Infrastructure and Equipment



Building Design

Roof Drainage Strategy



ROOF PLAN

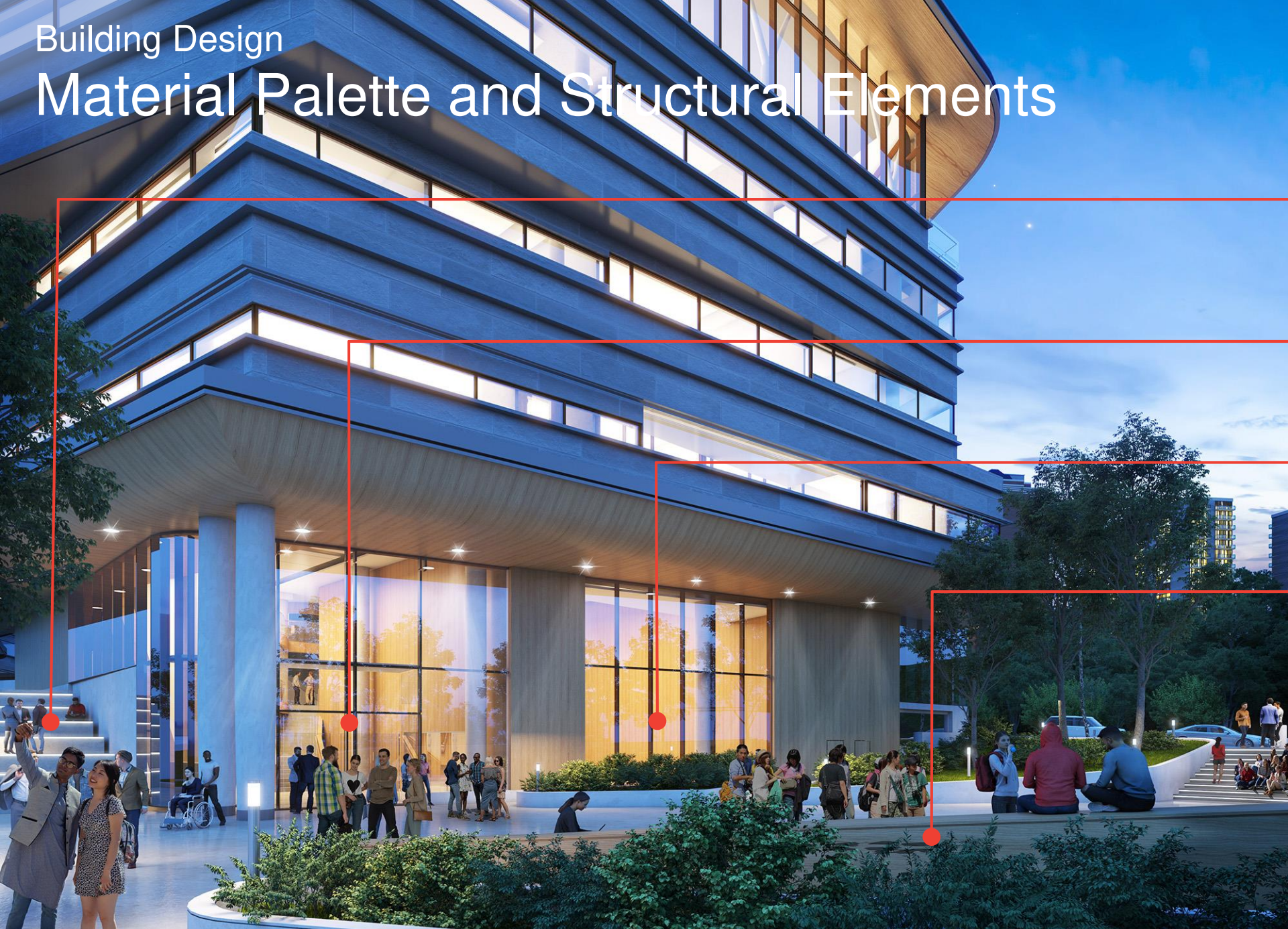
WALL SECTION

Building Design

Continuity and Differentiation



Material Palette and Structural Elements



Terrace Seating

Pimisi Entrance

Multipurpose Room

Amphitheatre Benches



Covered Area

Waiting Area

Bike Parking

Café



Book Return

Retail

Curbside Bench

Drop Off

ZOOMED VIEW INTO ALBERT ENTRANCE

Building Design Level 1 Transparency



Building Design

Community Hub and Gathering Spaces



TOWNHALL LOOKING FROM MULTIPURPOSE ROOM



LEVEL 3 – CREATIVE STUDIO



LEVEL 2 – CHILDREN'S ALCOVE



PIMISI ENTRANCE – AMPHITHEATRE AREA

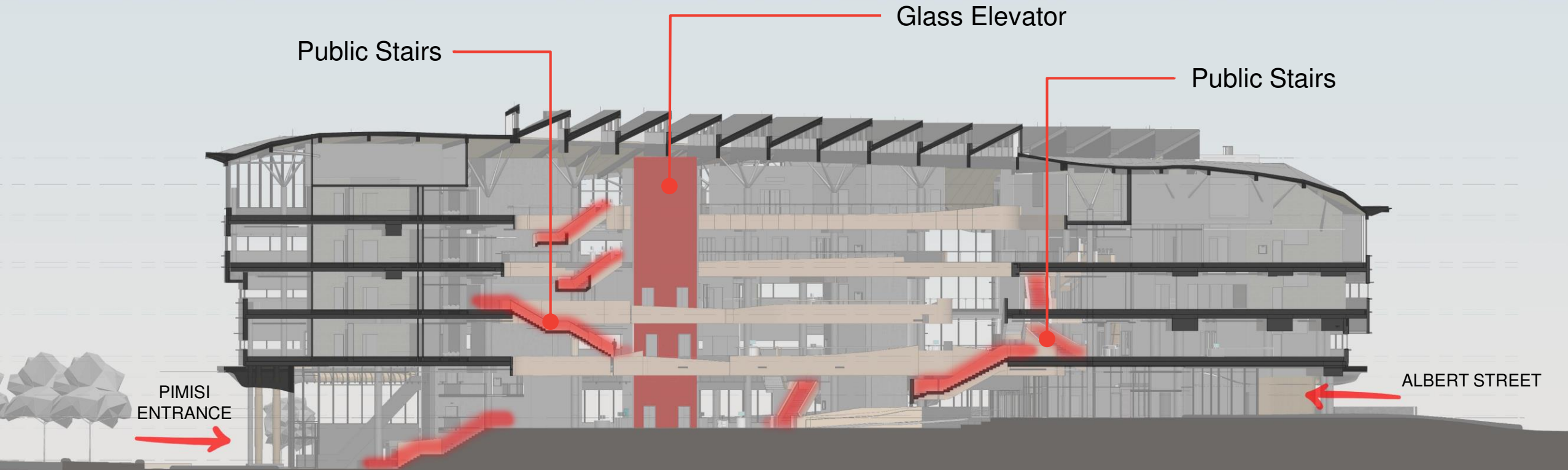


MULTIPURPOSE ROOM

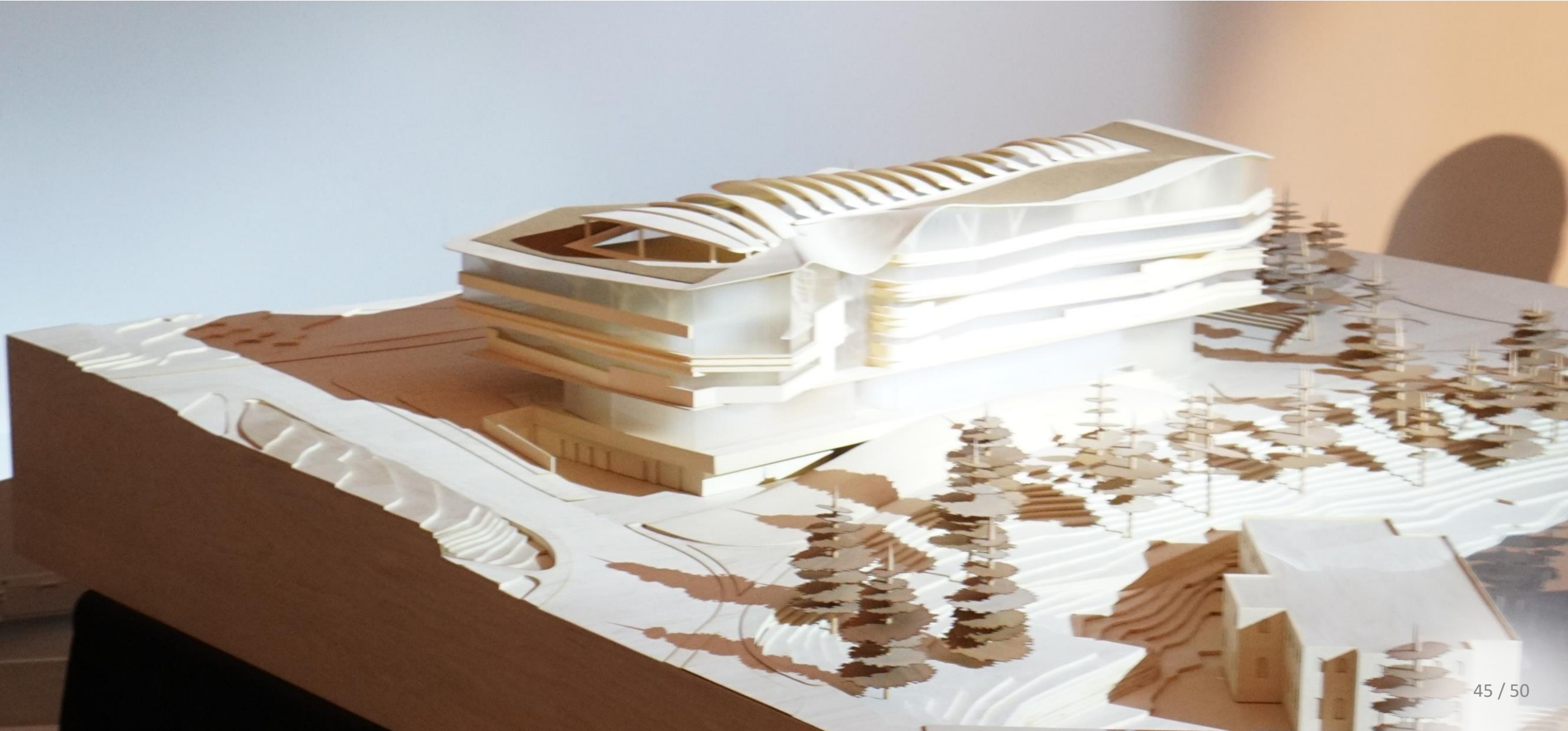


LAC READING ROOM

Clarity of Vertical Circulation



Explanation of Architect's Approach



Indigenous Design Features

Level 1



Pimisi entry lobby (level p1)
wall-mounted artwork



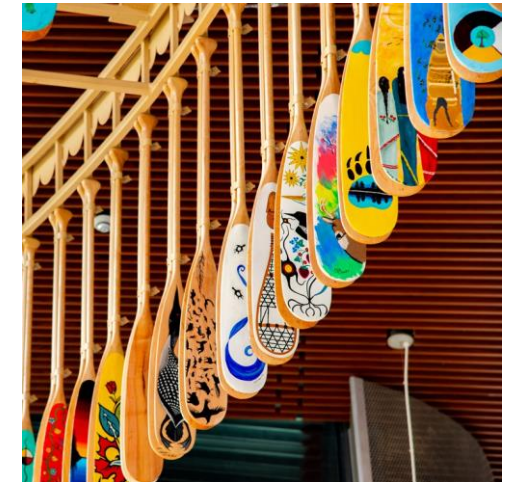
- Town Hall
- or other interior locations (levels 1-5)
- *free-standing artwork(s)*



PROJECT
NORTH



Indigenous Heritage
Recognition



Indigenous Design Features

Level 2



PROJECT
NORTH



Indigenous Design Features Wigwam Interior



Sustainable Design

Base Design LEED GOLD

- Efficient Energy Performance
- Local Resourced Materials
- 60/40 Wall to Glazing Proportion

Exploring NET ZERO CARBON

- Roof Mounted PV
- Triple Glazing
- Airtight Insulated Envelope

Next Steps

JDPR August 2020

City Building Permit Pre-consultation Q2-Q4 2020

Early Works and Site Preparation Q4 2020

City Building Permit Application Q1 2021

Start of Construction Q2 2021

Ready for Use / Open to the Public 2024

Official Public Opening 2025