

NOTE: ELEVATIONS ARE FOR REFERENCE OF OVERALL DESIGN. REFER TO A330 SERIES OF UNFOLDED ELEVATIONS FOR DIMENSIONAL INFORMATION.

ISSUED

No.	Date	Description
0	2020-05-28	ISSUED FOR CD 30%
1	2020-09-29	ISSUED FOR CD 60%
2	2020-10-13	ISSUED FOR CD 90% (ADDENDUM 2)
3	2020-11-23	ISSUED FOR SPC RESPONSE
4	2021-01-18	ISSUED FOR CD 90%
5	2021-02-26	ISSUED FOR COORDINATION
6	2021-03-19	ISSUED FOR REVIEW
7	2021-03-23	ISSUED FOR BUILDING PERMIT
8	2021-04-09	ISSUED FOR CONSULTANT COOPERATION
9	2021-05-11	ISSUED FOR TENDER
10	2021-05-11	ISSUED FOR BUILDING PERMIT UPDATE
11	2021-07-28	ISSUED FOR ADDENDUM NO.14

LEGEND - UNFOLDED ELEVATIONS

- HATCH INDICATES BRISSAFE GLASS REFER TO A058 FOR CONFIGURATION
- SHADED PATTERN INDICATES SPANDREL OR ACID ETCH (GLASS TYPE WITH "F" SUFFIX) GLASS REFER TO TAG AND A052 FOR GLASS BUILD-UP
- HATCH INDICATES CURVED STONE PANELS
- HATCH INDICATES STONE 1"FB COURSE
- HATCH INDICATES ALUMINUM FIN (FN-1 or FN-2)
- FOLD LINE (APPLICABLE TO A330 SERIES)
- FIRE BLOCKING (APPLICABLE TO A330 SERIES)
- JUNCTION BOX REFER TO ELECT. DRAWINGS FOR QUANTITY AND LAYOUT (APPLICABLE TO A330 SERIES)
- HOSE BIB (REFER TO MECH. DRAWINGS) (APPLICABLE TO A330 SERIES)
- POWER OUTLET REFER TO ELECT. DRAWINGS (APPLICABLE TO A330 SERIES)

GENERAL NOTES:

- FOR HORIZONTAL SPACING REFER TO PARTIALS PLANS.
- ALL EXTERIOR GLASS HAS BRISSAFE GLASS FINIT U.N.C.
- SITE MEASURE ALL SLOPING CURTAIN WALL FRAMING.

Diamond Schmitt Architects
KWC Architects Inc.
 Architects in Joint Venture for the OPLAC Joint Facility
 354 Adelaide Street West, Suite 100, Toronto, Canada M5H 1P7
 Tel: 416 862 8800 Fax: 416 862 5508 info@dsai.ca www.dsai.ca

OTTAWA PUBLIC LIBRARY - LIBRARY AND ARCHIVES CANADA JOINT FACILITY

555 Albert St. Ottawa, ON, K1R 7X3

OVERALL ELEVATIONS - PROJECT EAST & WEST

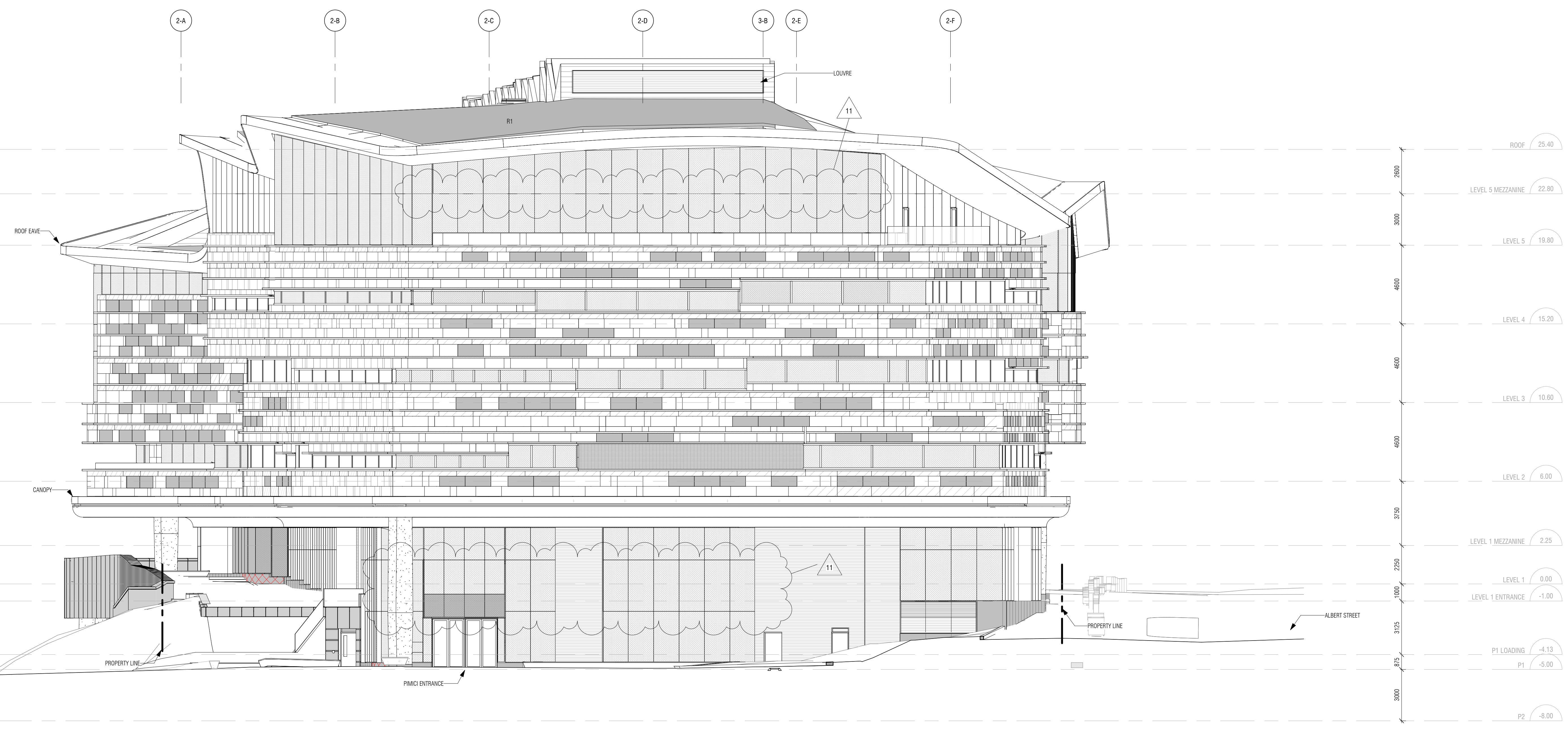
Scale: As indicated
 Project No: 1855
 Date:

A300

1
OVERALL ELEVATION - PROJECT EAST
 A300 1:125

DJ
DOUGLAS JAMES, MCIP, RPP
 MANAGER, DEVELOPMENT REVIEW - CENTRAL PLANNING, INFRASTRUCTURE & ECONOMIC DEVELOPMENT DEPARTMENT, CITY OF OTTAWA

APPROVED
 By Douglas James at 11:40 am, Oct 28, 2021



NOTE: ELEVATIONS ARE FOR REFERENCE OF OVERALL DESIGN. REFER TO A330 SERIES OF UNFOLDED ELEVATIONS FOR DIMENSIONAL INFORMATION.

2
OVERALL ELEVATION - PROJECT WEST
 A300 1:125