

CONTRACTOR MUST CHECK & VERIFY ALL DIMENSIONS ON THE JOB.  
 ALL DIMENSIONS, SPECIFICATIONS AND RELATED DOCUMENTS ARE THE COPYRIGHT PROPERTY OF THE ARCHITECT.  
 THIS DRAWING IS NOT TO BE USED FOR CONSTRUCTION UNLESS APPROVED BY THE ARCHITECT.

**ISSUED**  
 No. Date Description  
 1 2025-05-28 ISSUED FOR CD 30%

- GENERAL NOTES - PARTITIONS:**
- GLASS BOARD PARTITIONS AND FLOORING:**
    - EXTEND GLASS BOARD PARTITIONS FULL HEIGHT TO US OF FLOOR OR ROOF SLAB ABOVE, UNLESS OTHERWISE INDICATED. AT ACCESS FLOORS, GLASS BOARD PARTITIONS EXTEND TO STRUCTURAL SLAB BELOW UNLESS OTHERWISE INDICATED.
    - IF NON-FIRED FIRE SEPARATIONS, PROVIDE FIRE RATED PARTITIONS. PROVIDE JOINT SEALANT AT PARTNER JOINTS AND ALL PENETRATIONS THROUGH GLASS BOARD.
    - PROVIDE BACKER PLATES FOR HANDRAIL SUPPORT, BUMPER RAILS, WALL MOUNTED MILLWORK, WINDOW ACCESSORIES, TACK BOARDING AND MIRROR SURFACES ETC. REFER TO PLANS FOR EXTENT AND LOCATIONS.
    - IF PARTITIONS TO RECEIVE CERAMIC TILE WALL FINISH PROVIDE TILE BACKER BOARD IN US OF GLASS BOARD BEHIND TILES. BACKER BOARD TO BE FIRE RATED TYPE IF FIRE RATED PARTITIONS.
    - AT ACOUSTIC PARTITIONS, RECESSED ELECTRICAL BOXES ON OPPOSITE SIDE OF PARTITION TO BE STAGGERED MINIMUM 600MM.
    - SEE ROOM FINISH SCHEDULE FOR INTERIOR FINISHES.
    - HEIGHT OF FINISHED WALL TO BE 1200MM UNLESS INDICATED UNLESS OTHERWISE NOTED.
    - SLAB FINISH FOR GLASS BOARD PARTITIONS AND FLOORING:
      - CEILING ASSEMBLY TO EXTEND MIN. 150MM ABOVE FINISHED CEILING.
      - CEILING ASSEMBLY TO STOP AT US OF FINISHED CEILING.
      - CEILING FINISH TO BE INDICATED ON FLOOR PLANS. CAP WITH GB UNLESS OTHERWISE INDICATED.
      - CEILING ASSEMBLY TO REPLACE GB WITH IMPACT RESISTANT GB ON ONE SIDE ONLY (REFER TO RFS).
      - CEILING ASSEMBLY TO REPLACE GB WITH IMPACT RESISTANT GB ON BOTH SIDES.
      - CEILING FINISH TO EXTEND TO US OF FLOOR OR ROOF SLAB ABOVE.
      - CEILING FINISH TO EXTEND BELOW ASSEMBLY FROM US OF ACCESS FLOOR TO US SLAB BELOW. REFER TO RFS.
      - CEILING PARTITION EXTEND FROM TO ACCESS FLOOR TO US OF FLOOR OR ROOF SLAB ABOVE.
  - GLASS LISTINGS PROVIDED FOR FIRE RATED PARTITIONS ARE FOR REFERENCE ONLY. PROVIDE APPROPRIATE MANUFACTURER SPECIFIC ULC LISTINGS FOR REVIEW AS REQUIRED IN THE SPECIFICATIONS.**
  - CONCRETE MASONRY UNIT WALLS AND PARTITIONS:**
    - ALL CONCRETE MASONRY UNIT WALLS AND PARTITIONS TO US OF FLOOR OR ROOF SLAB ABOVE, UNLESS NOTED OTHERWISE. AT ACCESS FLOORS, CONCRETE MASONRY UNIT PARTITIONS EXTEND FROM STRUCTURAL SLAB BELOW UNLESS OTHERWISE INDICATED.
    - PROVIDE COMPRESSIBLE JOINT FILLER CONTINUOUS AT TOP OF ALL CMU WALLS AND PARTITIONS. SEAL JOINTS WHERE DEPOSED. PROVIDE PRESTRESSING AND SINKER SEALS AT PARTNER JOINTS AND PENETRATIONS IN FIRE RATED PARTITIONS.
    - PROVIDE LATERAL BRACING AT TOP OF CMU WALLS AND PARTITIONS. REFER TO STRUCTURAL FOR DETAILS.
    - PROVIDE REINFORCEMENT OF CMU WALLS AND PARTITIONS AS REQUIRED BY STRUCTURE.
  - FIRE SEPARATIONS:**
    - REFER TO FIRE SEPARATION PLANS - FIRE SEPARATION REQUIREMENTS.
    - AT ALL FIRE RATED PARTITIONS, INSTALL CONTINUOUS PRESTRESSING AND SINKER SEALS AT ALL PENETRATIONS, JOINTS AND PENETRATIONS.
    - AT RECESSED PANEL INSTALLATIONS (E.G. ELECTRICAL PANELS) WITHIN RATED WALLS PROVIDE CONTINUITY OF THE RATED RATING BEHIND AND AROUND THE PANEL.
- GENERAL NOTES - PLANS:**
- REFER TO BUILDING ELEMENTS SCHEDULE FOR EXTERIOR WALL, PARTITION, ROOF, CEILING AND SOFFIT FINISHES.
  - REFER TO MECHANICAL AND ELECTRICAL DRAWINGS FOR ADDITIONAL REQUIREMENTS.
  - AT LOCATIONS WHERE MECH. DUCTS INTERFERE WITH FULL HEIGHT CONSTRUCTION OF INTERIOR PARTITIONS, OFFER PARTITION ABOVE CEILING AND BRACE AS REQUIRED. MAINTAIN FIRE SEPARATION AND RATING OF PARTITIONS. OFFERING OF PARTITIONS WILL ONLY BE PERMITTED WHERE STRUCTURE CANNOT BE POSITIONED.
  - ALL DIMENSIONS ARE TAKEN TO FACE OF MASONRY OR CONCRETE AT MASONRY AND CONCRETE WALLS AND PARTITIONS. AT STEEL STUD PARTITIONS, DIMENSIONS ARE TAKEN TO FACE OF GLASS BOARD, UNLESS OTHERWISE NOTED.
  - INCREASE THICKNESS OF WALLS OR PARTITIONS OR OUT WALL THICKNESS AS REQUIRED TO ACCOMMODATE MECHANICAL AND ELECTRICAL PANELS AND SERVICES. MAINTAIN FIRE SEPARATION AROUND BACK OF PANELS WHERE APPLICABLE.
  - FOR DIMENSIONS OF CONCRETE REFER TO SLAB EDGE DRAWINGS.

**Diamond Schmitt Architects**  
**KWC Architects Inc.**  
 Architects in Joint Venture for the OPLAG Joint Facility  
 355 Adelaide Street West, Suite 100, Toronto, Canada M5H 1P7  
 Tel: 416 862 8800 Fax: 416 862 5008 info@dsai.ca www.dsai.ca

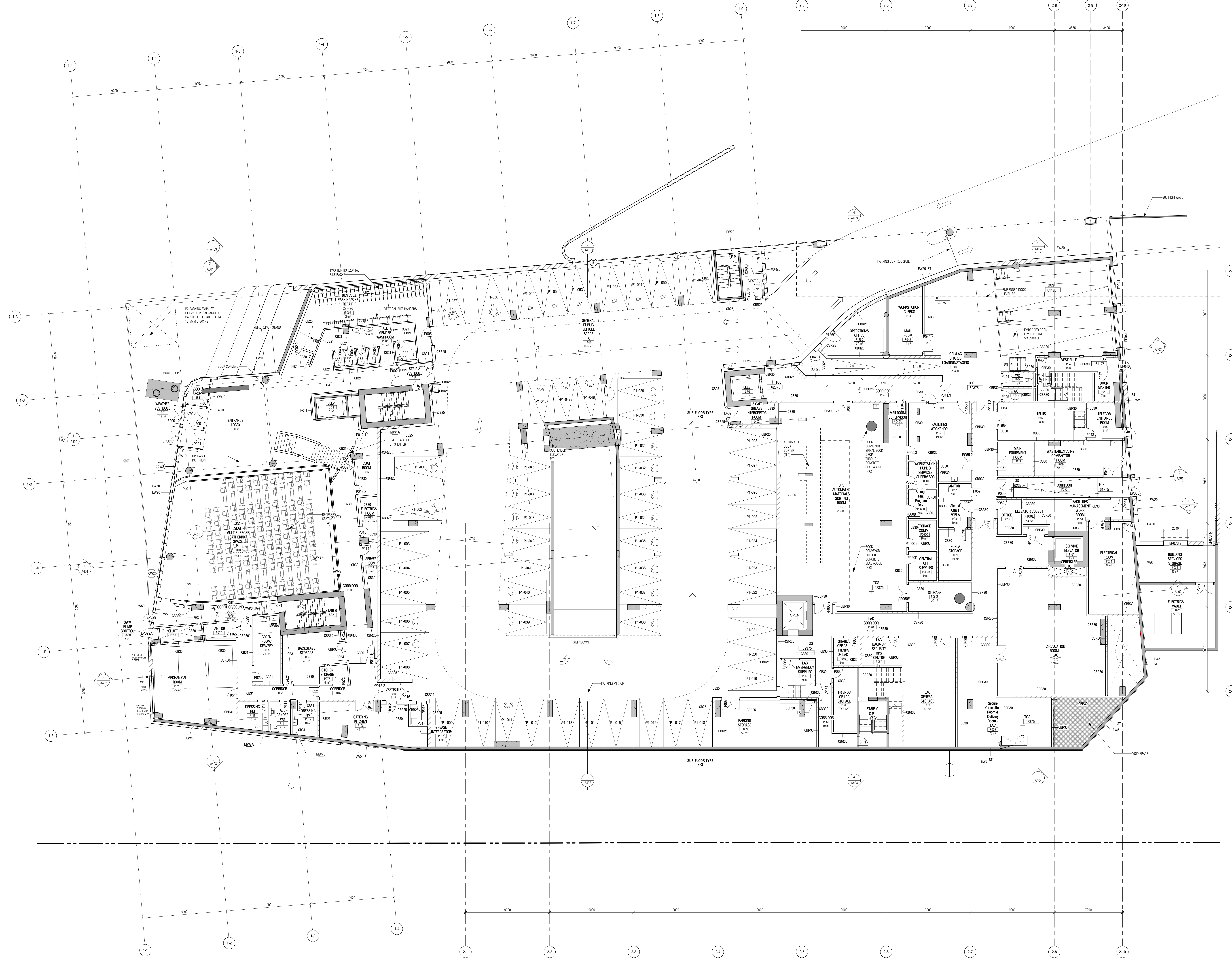
**OTTAWA PUBLIC LIBRARY AND LIBRARY AND ARCHIVES CANADA JOINT FACILITY**

**P2 FLOOR PLAN**

Scale: As indicated  
 Project No:  
 Date:

**A101**





CONTRACTOR MUST OBTAIN A WRITTY ALLIANCE ON THE JOB.  
 24 HOUR CALL SERVICE.  
 ALL DIMENSIONS, SPECIFICATIONS AND RELATED DOCUMENTS ARE THE COPYRIGHT PROPERTY OF THE ARCHITECT.  
 THE DRAWING IS NOT TO BE USED FOR CONSTRUCTION UNLESS SIGNED BY THE ARCHITECT.

**ISSUED**  
 No. Date Description  
 1 2020-05-28 ISSUED FOR CD 30%

- GENERAL NOTES - PARTITIONS:**
1. Gypsum board partitions and framing:
    - a) Denotes assembly to stop at US of finished ceiling.
    - b) Denotes assembly to stop at US of floor or roof slab above, unless otherwise indicated.
    - c) Denotes assembly to stop at US of floor or roof slab above, unless otherwise indicated.
    - d) Denotes assembly to stop at US of floor or roof slab above, unless otherwise indicated.
    - e) Denotes assembly to stop at US of floor or roof slab above, unless otherwise indicated.
    - f) Denotes assembly to stop at US of floor or roof slab above, unless otherwise indicated.
    - g) Denotes assembly to stop at US of floor or roof slab above, unless otherwise indicated.
    - h) Denotes assembly to stop at US of floor or roof slab above, unless otherwise indicated.
    - i) Denotes assembly to stop at US of floor or roof slab above, unless otherwise indicated.
    - j) Denotes assembly to stop at US of floor or roof slab above, unless otherwise indicated.
  2. Concrete masonry unit walls and partitions:
    - a) All concrete masonry unit walls and partitions to US of floor or roof slab above, unless otherwise indicated.
    - b) Access floors, concrete masonry unit partitions extend from structural slab below unless otherwise indicated.
    - c) Provide compressible joint filler conforming to US of all cast walls and partitions. Seal joints where depicted. Provide prestressing and tension seals at perimeter joints and penetrations in fire rated partitions.
    - d) Provide lintel bracing at top of cast walls and partitions. Refer to structural for details.
    - e) Provide reinforcement of cast walls and partitions as required by structural.
  3. Fire separations:
    - a) Refer to fire separation plans - fire separation requirements.
    - b) At all fire rated partitions, install continuous fire stopping and smoke seals at all perimeter joints and penetrations.
    - c) At fire rated panel installations (e.g. electrical panels), within rated walls provide continuity of the fire rated rating behind and around the panel.
- GENERAL NOTES - PLANS:**
1. REFER TO BUILDING ELEMENTS SCHEDULE FOR EXTERIOR WALL, PARTITION, ROOF, CEILING AND SKYRISE TYPES.
  2. REFER TO MECHANICAL AND ELECTRICAL DRAWINGS FOR ADDITIONAL REQUIREMENTS.
  3. AT LOCATIONS WHERE MECH. DUCTS INTERFERE WITH FULL HEIGHT CONSTRUCTION OF INTERIOR PARTITIONS, OFFICE PARTITION ABOVE CEILING AND BRACE AS REQUIRED. MAINTAIN FIRE SEPARATION AND RATING OF PARTITION. ON SETTING OF PARTITIONS, WALLS ONLY BE PARTITIONED WHERE DUCTWORK CANNOT BE POSITIONED.
  4. ALL DIMENSIONS ARE TAKEN TO FACE OF MASONRY OR CONCRETE AT MASONRY AND CONCRETE WALLS AND PARTITIONS. AT STEEL, STUD PARTITIONS, DIMENSIONS ARE TAKEN TO FACE OF GYPSUM BOARD, UNLESS OTHERWISE NOTED.
  5. INCREASE THICKNESS OF WALLS OR FLOOR OUT WALL THICKNESS AS REQUIRED TO ACCOMMODATE MECHANICAL AND ELECTRICAL PANELS AND SERVICES. MAINTAIN FIRE SEPARATION AROUND BACK OF PANELS WHERE APPLICABLE.
  6. FOR DIMENSIONS OF CONCRETE REFER TO SLAB EDGE DRAWINGS.

**Diamond Schmitt Architects**  
**KWC Architects Inc.**  
 Architects in Joint Venture for the OPL/LAC Joint Facility  
 355 Adelaide Street West, Suite 100, Toronto, Canada M5H 1Y7  
 Tel: 416 862 8800 Fax: 416 862 5008 info@dsai.ca www.dsai.ca

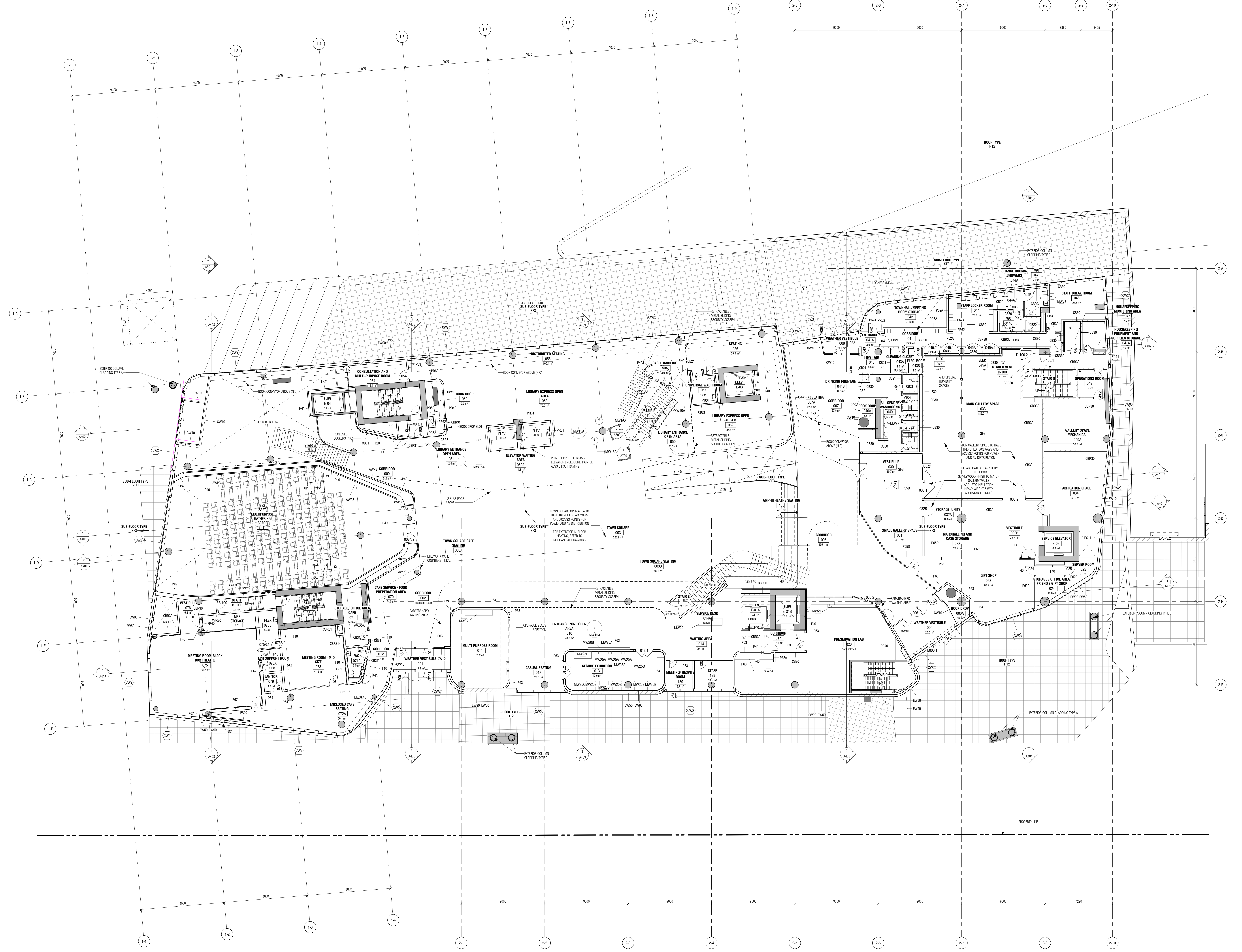
**OTTAWA PUBLIC LIBRARY AND ARCHIVES CANADA JOINT FACILITY**

**P1 FLOOR PLAN**

Scale: As indicated  
 Project No:  
 Date:

**A102**





CONTRACTOR MUST CHECK A VERIFY ALL DIMENSIONS ON THE JOB.  
 24 HOUR SILENCE.  
 ALL DIMENSIONS, SPECIFICATIONS AND RELATED DOCUMENTS ARE THE COPYRIGHT PROPERTY OF THE ARCHITECT. NO PART OF THIS DOCUMENT IS TO BE REPRODUCED OR TRANSMITTED IN ANY FORM OR BY ANY MEANS, ELECTRONIC OR MECHANICAL, WITHOUT THE WRITTEN PERMISSION OF THE ARCHITECT.  
 THIS DRAWING IS NOT TO BE USED FOR CONSTRUCTION UNLESS SIGNED BY THE ARCHITECT.

No.	Date	Description
1	2020-05-26	ISSUED FOR CD 30%

- GENERAL NOTES - PARTITIONS:**
1. Gypsum board partitions and flooring:
    - a) EXTEND GYPSUM BOARD PARTITIONS FULL HEIGHT TO US OF FLOOR OR ROOF SLAB ABOVE, UNLESS OTHERWISE INDICATED. AT ACCESS FLOORS, GYPSUM BOARD PARTITIONS EXTEND TO STRUCTURAL SLAB BELOW UNLESS OTHERWISE INDICATED.
    - b) AT NON-FIRED FIRE SEPARATIONS, JOISTS AND FIRE RATED PARTITIONS, PROVIDE JOINT SEALANT AT PERIMETER JOISTS AND ALL PENETRATIONS THROUGH GYPSUM BOARD.
    - c) PROVIDE BACKER PLATES FOR HANDRAIL SUPPORT, BUMPER RAILS, WALL MOUNTED MALLWAYS, WINDOW ACCESSORIES, TACK BOARDS AND OTHER SURFACES ETC. REFER TO PLANS FOR EXTENT AND LOCATIONS.
    - d) AT PARTITIONS TO RECEIVE CERAMIC TILE WALL FINISH PROVIDE TILE BACKER BOARD IN LEVEL OF GYPSUM BOARD BEHIND TILES. BACKER BOARD TO BE FIRE RATED TYPE OF SAME RATING AS PARTITION.
    - e) AT ACoustic PARTITIONS, RECESSED ELECTRICAL BOXES ON OPPOSITE SIDE OF PARTITION TO BE STAGGERED MINIMUM 600MM.
    - f) SEE ROOM FRESH SCHEDULE FOR INTERIOR FINISHES.
    - g) HEIGHT OF FINISH WALL TO BE 1500mm ABOVE FINISHED CEILING UNLESS OTHERWISE NOTED.
    - h) SURFACES FOR GYPSUM BOARD PARTITIONS AND FLOORING:
      - A) DENOTES ASSEMBLY TO EXTEND MIN. 150mm ABOVE FINISHED CEILING.
      - B) DENOTES ASSEMBLY TO STOP AT US OF FINISHED CEILING.
      - C) DENOTES LOW WALL - HEIGHT INDICATED ON FLOOR PLAN. CAP WITH GR. UNLESS OTHERWISE INDICATED.
      - D) DENOTES ASSEMBLY TO FINISH TO TOP OF FLOOR OR ROOF SLAB ABOVE.
      - E) DENOTES ASSEMBLY TO FINISH TO TOP OF FLOOR OR ROOF SLAB ABOVE.
      - F) DENOTES FINISH TO EXTEND BELOW ASSEMBLY FROM US OF ACCESS FLOOR TO TO SLAB BELOW. REFER TO FINISH SCHEDULE.
      - G) DENOTES PARTITION EXTENDS FROM TO ACCESS FLOOR TO US OF FLOOR OR ROOF SLAB ABOVE.
  2. CONCRETE MASONRY UNIT WALLS AND PARTITIONS:
    - a) ALL CONCRETE MASONRY UNIT WALLS AND PARTITIONS TO US OF FLOOR OR ROOF SLAB ABOVE, UNLESS NOTED OTHERWISE. AT ACCESS FLOORS, CONCRETE MASONRY UNIT PARTITIONS EXTEND FROM STRUCTURAL SLAB BELOW UNLESS OTHERWISE INDICATED.
    - b) PROVIDE COMPRESSIBLE JOINT FILLER CONTINUOUS AT TOP OF ALL CMU WALLS AND PARTITIONS. SEAL JOINTS WHERE DORSER, PROVIDE PRECASTING AND SINKER SEAL AT PERIMETER JOISTS AND PENETRATIONS IN FIRE RATED PARTITIONS.
    - c) PROVIDE LATERAL BRACING AT TOP OF CMU WALLS AND PARTITIONS. REFER TO STRUCTURE FOR BRACING DETAILS.
    - d) PROVIDE REINFORCEMENT OF CMU WALLS AND PARTITIONS AS REQUIRED BY SPECIFICATIONS.
  3. FIRE SEPARATIONS:
    - a) REFER TO FIRE SEPARATION PLANS - FIRE SEPARATION REQUIREMENTS.
    - b) AT ALL FIRE RATED PARTITIONS, INSTALL CONTINUOUS PRECASTING AND SINKER SEAL AT ALL PERIMETER JOISTS AND PENETRATIONS.
    - c) AT RECESSED PANEL INSTALLATIONS (ELECTRICAL PANELS & SWITCHES), WALLS SHALL PROVIDE CONTINUITY OF THE RECESSED RATING BEHIND AND AROUND THE PANEL.

- GENERAL NOTES - PLANS:**
1. REFER TO BUILDING ELEMENTS SCHEDULE FOR EXTERIOR WALL, PARTITION, ROOF, CEILING AND SKYLIIGHT TYPES.
  2. REFER TO MECHANICAL AND ELECTRICAL DRAWINGS FOR ADDITIONAL REQUIREMENTS.
  3. AT LOCATIONS WHERE MECH. DUCTS INTERFERE WITH FULL HEIGHT CONSTRUCTION OF INTERIOR PARTITIONS, OFFICE PARTITION ABOVE CEILING AND BRACE AS REQUIRED. MAXIMUM FIRE SEPARATION RATING OF PARTITIONS TO BE MAINTAINED. OFFICE PARTITIONS WILL ONLY BE PERMITTED WHERE OFFICE CANNOT BE POSITIONED.
  4. ALL DIMENSIONS ARE TAKEN TO FACE OF MASONRY OR CONCRETE AT MASONRY AND CONCRETE WALLS AND PARTITIONS. AT STEEL, STUD PARTITIONS, DIMENSIONS ARE TAKEN TO FACE OF GYPSUM BOARD, UNLESS OTHERWISE NOTED.
  5. INCREASE THICKNESS OF WALLS OR FLOOR OUT WALL THICKNESS AS REQUIRED TO ACCOMMODATE MECHANICAL AND ELECTRICAL PANELS AND SERVICES. MAINTAIN FIRE SEPARATION AROUND BACK OF PANELS WHERE APPLICABLE.
  6. FOR DIMENSIONS OF CONCRETE REFER TO SLAB EDGE DRAWINGS.

**Diamond Schmitt Architects**  
**KWC Architects Inc.**  
 Architects in Joint Venture for the OPLAC Joint Facility  
 358 Adelaide Street West, Suite 1100, Toronto, Canada M5H 1P7  
 Tel: 416 862 8800 Fax: 416 862 5508 info@dsai.ca www.dsai.ca

**OTTAWA PUBLIC LIBRARY AND ARCHIVES CANADA JOINT FACILITY**

LEVEL 1 FLOOR PLAN

Scale: As indicated  
 Project No:  
 Date:

A103





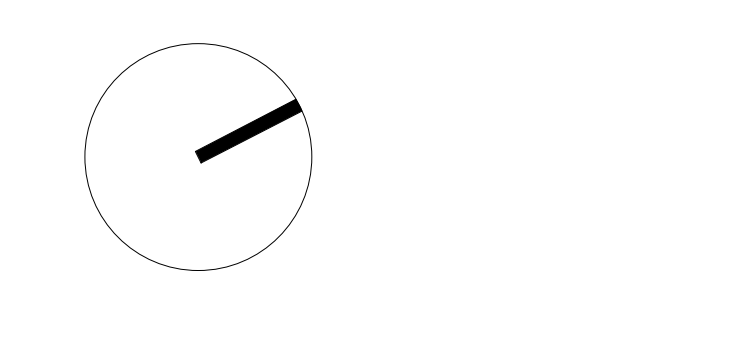
CONTRACTOR MUST CHECK & VERIFY ALL DIMENSIONS ON THE JOB.  
 24 HOUR SCALE DRAWING.  
 ALL DIMENSIONS, SPECIFICATIONS AND RELATED DOCUMENTS ARE THE COPYRIGHT PROPERTY OF THE ARCHITECT. NO PART OF THIS DRAWING IS TO BE REPRODUCED OR TRANSMITTED IN ANY FORM OR BY ANY MEANS, ELECTRONIC OR MECHANICAL, INCLUDING PHOTOCOPYING, RECORDING, OR BY ANY INFORMATION STORAGE AND RETRIEVAL SYSTEM, WITHOUT THE WRITTEN PERMISSION OF THE ARCHITECT.  
 THIS DRAWING IS NOT TO BE USED FOR CONSTRUCTION UNLESS SIGNED BY THE ARCHITECT.

ISSUED	No.	Date	Description
1	2020-05-28	ISSUED FOR CD 30%	

- GENERAL NOTES - PARTITIONS:**
1. GYPSUM BOARD PARTITIONS AND FLOORING:
    - 1.1 EXTEND GYPSUM BOARD PARTITIONS FULL HEIGHT TO US OF FLOOR OR ROOF SLAB ABOVE, UNLESS OTHERWISE INDICATED. AT ACCESS FLOORS, GYPSUM BOARD PARTITIONS EXTEND TO STRUCTURAL SLAB BELOW UNLESS OTHERWISE INDICATED.
    - 1.2 AT NON-RATED FIRE SEPARATIONS, GYPSUM BOARD FIRE RATED PARTITIONS, PROVIDE JOINT SEALANT AT PARTNER JOINTS AND ALL PENETRATIONS THROUGH GYPSUM BOARD.
    - 1.3 PROVIDE BACKER PLATES FOR HANDRAIL SUPPORT, BUMPER RAILS, WALL MOUNTED MALLWORK, WINDOW ACCESSORIES, TACK BOARDING AND WRITING SURFACES ETC. REFER TO PLANS FOR EXTENT AND LOCATIONS.
    - 1.4 AT PARTITIONS TO RECEIVE CERAMIC TILE WALL FINISH PROVIDE TILE BACKER BOARD IN LEVEL OF GYPSUM BOARD BEHIND TILES. BACKER BOARD TO BE FIRE RATED TYPE IF FIRE RATED PARTITIONS.
    - 1.5 AT ACOUSTIC PARTITIONS, RECESSED ELECTRICAL BOXES ON OPPOSITE SIDES OF PARTITION TO BE STAGGERED MINIMUM 600mm.
    - 1.6 SEE ROOM FINISH SCHEDULE FOR INTERIOR FINISHES.
    - 1.7 HEIGHT OF FINISH WALL TO BE 1500mm UNLESS OTHERWISE NOTED.
    - 1.8 SLAB FINISH FOR GYPSUM BOARD PARTITIONS AND FLOORING:
      - A: DENOTES ASSEMBLY TO EXTEND MIN. 150mm ABOVE FINISHED CEILING.
      - B: DENOTES ASSEMBLY TO STOP AT US OF FINISHED CEILING.
      - C: DENOTES LOW WALL - HEIGHT INDICATED ON FLOOR/ROOF PLAN WITH GB UNLESS OTHERWISE INDICATED.
      - D: DENOTES ASSEMBLY REPLACES GB WITH IMPACT RESISTANT GB ON ONE SIDE ONLY (REFER TO REF).
      - E: DENOTES ASSEMBLY REPLACES GB WITH IMPACT RESISTANT GB ON BOTH SIDES.
      - F: DENOTES ENGINEERED METAL SUPPORT SYSTEM.
      - G: DENOTES FINISH TO EXTEND TO US OF FLOOR OR ROOF SLAB ABOVE.
      - H: DENOTES FILM OVER TO EXTEND BELOW ASSEMBLY FROM US OF ACCESS FLOOR TO TO SLAB BELOW (REFER TO ANNO).
      - J: DENOTES PARTITION EXTENDS FROM TO ACCESS FLOOR TO US OF FLOOR OR ROOF SLAB ABOVE.
  - 1.9 ULC LISTINGS PROVIDED FOR FIRE RATED PARTITIONS ARE FOR REFERENCE ONLY. PROVIDE APPROPRIATE MANUFACTURER SPECIFIC ULC LISTINGS FOR REVIEW AS REQUIRED IN THE SPECIFICATIONS.
- 2. CONCRETE MASONRY UNIT WALLS AND PARTITIONS:**
- 2.1 ALL CONCRETE MASONRY UNIT WALLS AND PARTITIONS TO US OF FLOOR OR ROOF SLAB ABOVE, UNLESS NOTED OTHERWISE. AT ACCESS FLOORS, CONCRETE MASONRY UNIT PARTITIONS EXTEND FROM STRUCTURAL SLAB BELOW UNLESS OTHERWISE INDICATED.
  - 2.2 PROVIDE COMPRESSIBLE JOINT FILLER CONTINUOUS AT TOP OF ALL CMU WALLS AND PARTITIONS. SEAL JOINTS WHERE DESIRED. PROVIDE PRESTRESSING AND SINKER SEALS AT PARTNER JOINTS AND PENETRATIONS IN FIRE RATED PARTITIONS.
  - 2.3 PROVIDE LATERAL BRACING AT TOP OF CMU WALLS AND PARTITIONS. REFER TO STRUCTURAL DRAWINGS FOR DETAILS.
  - 2.4 PROVIDE REINFORCEMENT OF CMU WALLS AND PARTITIONS AS REQUIRED BY STRUCTURE.
- 3. FIRE SEPARATIONS:**
- 3.1 REFER TO FIRE SEPARATION PLANS - FIRE SEPARATION REQUIREMENTS.
  - 3.2 AT ALL FIRE RATED PARTITIONS, INSTALL CONTINUOUS PRESTRESSING AND SINKER SEALS AT ALL PARTNER JOINTS AND PENETRATIONS.
  - 3.3 AT RECESSED PANEL INSTALLATIONS (E.G. ELECTRICAL PANELS) WITHIN RATED WALLS PROVIDE CONTINUITY OF THE RATED RATING BEHIND AND AROUND THE PANEL.

- GENERAL NOTES - PLANS:**
1. REFER TO BUILDING ELEMENTS SCHEDULE FOR EXTERIOR WALL, PARTITION, ROOF, CEILING AND SLOTTED FLOORS.
  2. REFER TO MECHANICAL AND ELECTRICAL DRAWINGS FOR ADDITIONAL REQUIREMENTS.
  3. AT LOCATIONS WHERE MECH. DUCTS INTERFERE WITH FULL HEIGHT CONSTRUCTION OF INTERIOR PARTITIONS, OFFSET PARTITION ABOVE CEILING AND BRACE AS REQUIRED. MAXIMUM FIRE SEPARATION RATING OF PARTITION. ON SETTING OF PARTITIONS WALL ONLY BE PERMITTED WHERE OCCUPANCY CANNOT BE POSITIONED.
  4. ALL DIMENSIONS ARE TAKEN TO FACE OF MASONRY OR CONCRETE AT MASONRY AND CONCRETE WALLS AND PARTITIONS. AT STEEL STUD PARTITIONS, DIMENSIONS ARE TAKEN TO FACE OF GYPSUM BOARD, UNLESS OTHERWISE NOTED.
  5. INCREASE THICKNESS OF WALLS OR FLOOR OUT WALL THICKNESS AS REQUIRED TO ACCOMMODATE MECHANICAL AND ELECTRICAL PANELS AND SERVICES. MAINTAIN FIRE SEPARATION AROUND BACK OF PANELS WHERE APPLICABLE.
  6. FOR DIMENSIONS OF CONCRETE REFER TO SLAB EDGE DRAWINGS.

**Diamond Schmitt Architects**  
**KWC Architects Inc.**  
 Architects in Joint Venture for the OPLAG Joint Facility  
 384 Adelaide Street West, Suite 100, Toronto, Canada M5H 1P7  
 Tel: 416 862 8800 Fax: 416 862 5508 info@dsai.ca www.dsai.ca



**OTTAWA PUBLIC LIBRARY AND ARCHIVES CANADA JOINT FACILITY**

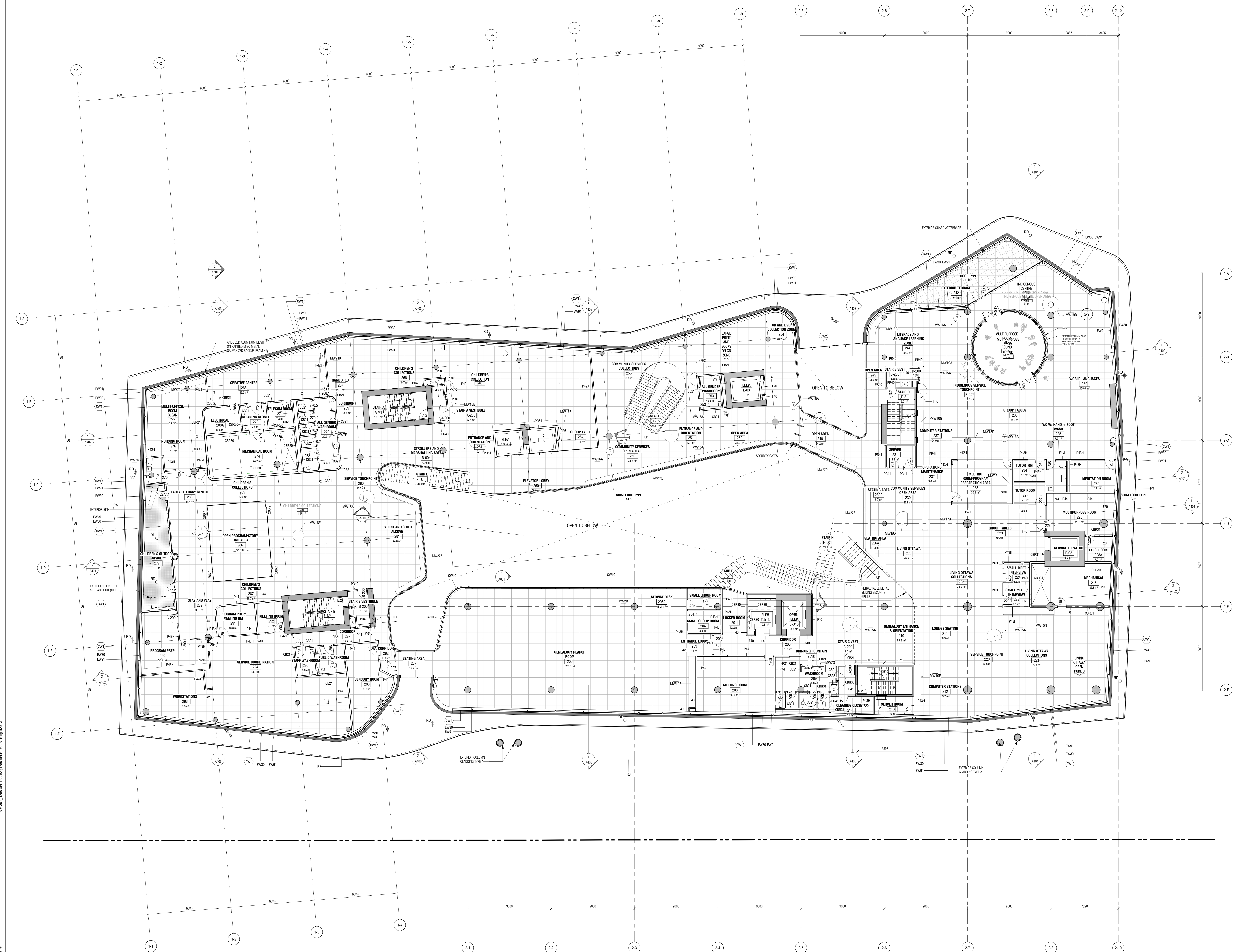
LEVEL 1 MEZZANINE

Scale: As indicated  
 Project No:  
 Date:

A104

2020-05-28 13:21:19 PM B:\302\1835\OPL-LAC\CD\1835\ARCH\CD3-04-Mezz-REV01



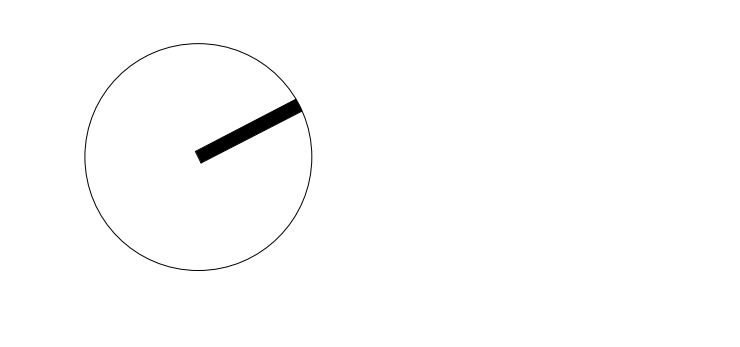


CONTRACTOR SHALL VERIFY ALL DIMENSIONS ON THE JOB.  
 ALL DIMENSIONS, SPECIFICATIONS AND RELATED DOCUMENTS ARE THE COPYRIGHT PROPERTY OF THE ARCHITECT. NO PART OF THIS DOCUMENT IS TO BE REPRODUCED OR TRANSMITTED IN ANY FORM OR BY ANY MEANS, ELECTRONIC OR MECHANICAL, INCLUDING PHOTOCOPYING, RECORDING, OR BY ANY INFORMATION STORAGE AND RETRIEVAL SYSTEM, WITHOUT THE WRITTEN PERMISSION OF THE ARCHITECT.  
 THIS DRAWING IS NOT TO BE USED FOR CONSTRUCTION UNLESS SIGNED BY THE ARCHITECT.

ISSUED  
 No. Date Description  
 1 2020-05-28 ISSUED FOR CD 30%

- GENERAL NOTES - PARTITIONS:**
- 1.1 Gypsum board partitions shall be fully to top of floor or roof slab above, unless otherwise indicated. At access floors, gypsum board partitions extend to structural slab below unless otherwise indicated.
  - 1.2 All non-water fire separations, doors and fire rated partitions, provide joint sealant at perimeter joints and all penetrations through gypsum board.
  - 1.3 Provide backer plates for handrail support, bumper rails, wall mounted lockers, window accessories, rack boards and window surfaces etc. Refer to plans for extent and locations.
  - 1.4 Partitions to receive ceramic tile wall finish provide tile backer board in lieu of gypsum board behind tiles. Backer board to be fire rated type if wall is fire rated.
  - 1.5 At acoustic partitions, recessed electrical boxes on opposite sides of partition to be staggered minimum 600mm.
  - 1.6 See room finish schedule for interior finishes.
  - 1.7 Height of finished wall to be 10mm above finished ceiling unless otherwise noted.
  - 1.8 SURFACES FOR GYPSUM BOARD PARTITIONS AND FINISHES:
    - A: DENOTES ASSEMBLY TO EXTEND MIN 150mm ABOVE FINISHED CEILING.
    - B: DENOTES ASSEMBLY TO STOP AT US OF FINISHED CEILING.
    - C: DENOTES LOW WALL - HEIGHT INDICATED ON FLOOR PLAN. CAP WITH GB UNLESS OTHERWISE INDICATED.
    - D: DENOTES ASSEMBLY TO STOP AT US OF FLOOR OR ROOF SLAB ABOVE.
    - E: DENOTES ASSEMBLY TO STOP AT US OF FLOOR OR ROOF SLAB ABOVE.
    - F: DENOTES FINISH TO EXTEND TO US OF FLOOR OR ROOF SLAB ABOVE.
    - G: DENOTES FINISH TO EXTEND BELOW ASSEMBLY FROM US OF ACCESS FLOOR TO TO SLAB BELOW. REFER TO ARCH.
    - H: DENOTES PARTITION EXTENDS FROM US ACCESS FLOOR TO US OF FLOOR OR ROOF SLAB ABOVE.
    - I: DENOTES PARTITION TO STOP AT US OF FINISHED CEILING.
    - J: DENOTES PARTITION TO STOP AT US OF FINISHED CEILING.
  - 1.9 USE LISTINGS PROVIDED FOR FIRE RATED PARTITIONS ARE FOR REFERENCE ONLY. PROVIDE APPROPRIATE MANUFACTURER SPECIFIC ULL LISTINGS FOR REVIEW AS REQUIRED IN THE SPECIFICATIONS.
- 2. CONCRETE MASONRY UNIT WALLS AND PARTITIONS:**
- 2.1 ALL CONCRETE MASONRY UNIT WALLS AND PARTITIONS TO US OF FLOOR OR ROOF SLAB ABOVE, UNLESS NOTED OTHERWISE. AT ACCESS FLOORS, CONCRETE MASONRY UNIT PARTITIONS EXTEND FROM STRUCTURAL SLAB BELOW UNLESS OTHERWISE INDICATED.
  - 2.2 PROVIDE COMPRESSED JOINT FILLER CONTINUOUS AT TOP OF ALL CMU WALLS AND PARTITIONS. SEAL JOINTS WHERE DESIRED. PROVIDE PRESTRESSING AND SINKING SCALES AT PERIMETER JOINTS AND PENETRATIONS IN FIRE RATED PARTITIONS.
  - 2.3 PROVIDE LATERAL BRACING AT TOP OF CMU WALLS AND PARTITIONS. REFER TO STRUCTURAL FOR DETAILS.
  - 2.4 PROVIDE REINFORCEMENT OF CMU WALLS AND PARTITIONS AS REQUIRED BY STRUCTURE.
- 3. FIRE SEPARATIONS:**
- 3.1 REFER TO FIRE SEPARATION PLANS - FIRE SEPARATION REQUIREMENTS.
  - 3.2 AT ALL FIRE RATED PARTITIONS, INSTALL CONTINUOUS PRESTRESSING AND SINKING SCALES AT ALL PERIMETER JOINTS AND PENETRATIONS.
  - 3.3 AT RECESSED PANEL INSTALLATIONS (ELECTRICAL PANELS) WITHIN RATED WALLS PROVIDE CONTINUITY OF THE RATED RATING BEHIND AND AROUND THE PANEL.
- GENERAL NOTES - PLANS:**
1. REFER TO BUILDING ELEMENTS SCHEDULE FOR EXTERIOR WALL, PARTITION, ROOF, CEILING AND SKYRIT TYPES.
  2. REFER TO MECHANICAL AND ELECTRICAL DRAWINGS FOR ADDITIONAL REQUIREMENTS.
  3. AT LOCATIONS WHERE MECH. DUCTS INTERFERE WITH FULL HEIGHT CONSTRUCTION OF INTERIOR PARTITIONS, OFFICE PARTITIONS ABOVE CEILING AND BRACE AS REQUIRED. MAINTAIN FIRE SEPARATION/CEILING FINISH OF PARTITION. ON SETTING OF PARTITIONS WALL ONLY BE PARTITIONED WHERE DUCTWORK CANNOT BE POSITIONED.
  4. ALL DIMENSIONS ARE TAKEN TO FACE OF MASONRY OR CONCRETE AT MASONRY AND CONCRETE WALLS AND PARTITIONS. AT STEEL STUD PARTITIONS, DIMENSIONS ARE TAKEN TO FACE OF GYPSUM BOARD, UNLESS OTHERWISE NOTED.
  5. INCREASE THICKNESS OF WALLS OR FLOOR OUT WALL THICKNESS AS REQUIRED TO ACCOMMODATE MECHANICAL AND ELECTRICAL PANELS AND SERVICES. MAINTAIN FIRE SEPARATION AROUND BACK OF PANELS WHERE APPLICABLE.
  6. FOR DIMENSIONS OF CONCRETE REFER TO SLAB EDGE DRAWINGS.

**Diamond Schmitt Architects**  
**KWC Architects Inc.**  
 Architects in Joint Venture for the OPLAC Joint Facility  
 354 Adelaide Street West, Suite 100, Toronto, Canada M5H 1P7  
 Tel: 416 862 8800 Fax: 416 862 5508 info@dsai.ca www.dsai.ca



**OTTAWA PUBLIC LIBRARY AND ARCHIVES CANADA JOINT FACILITY**

LEVEL 2 FLOOR PLAN

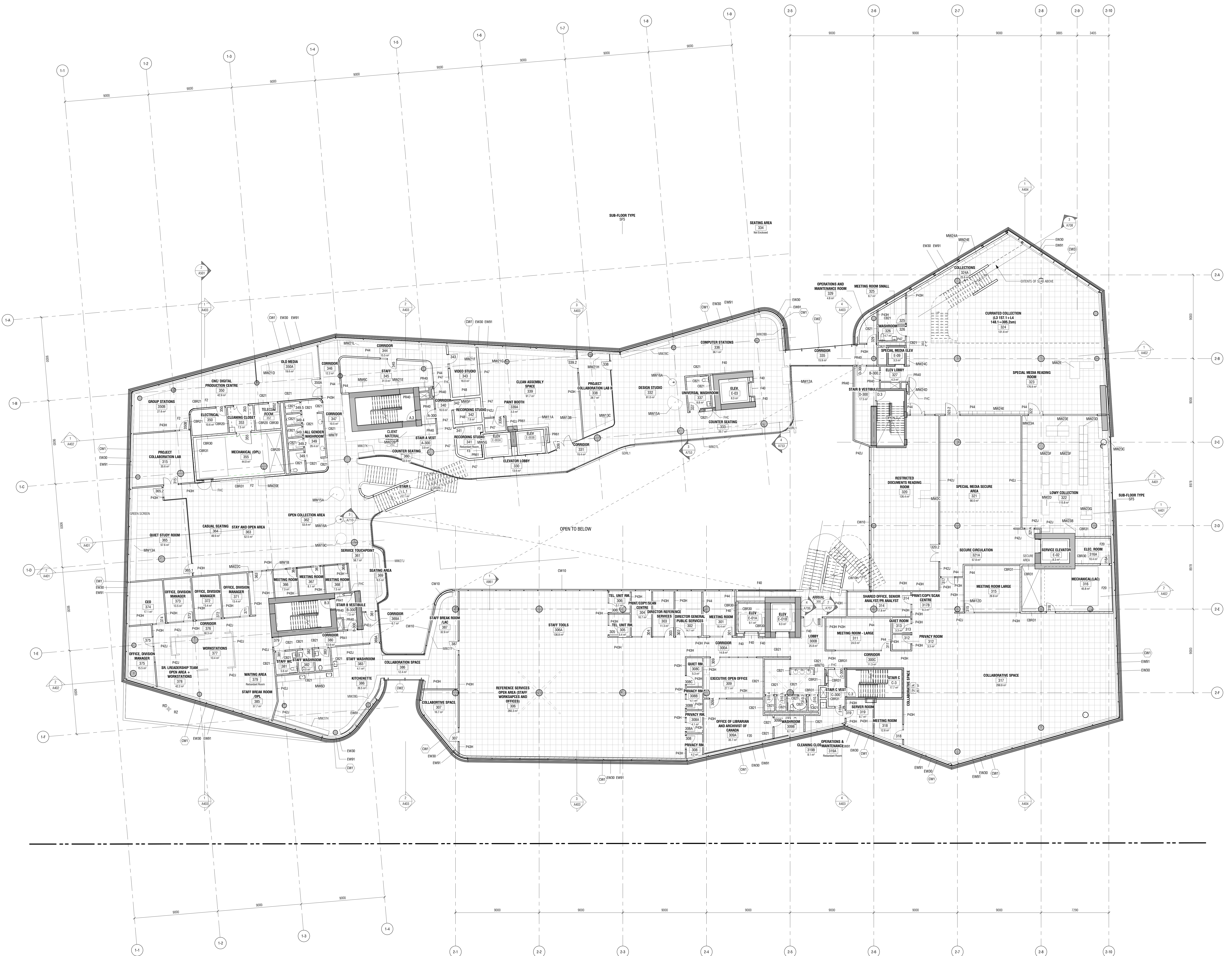
Scale: As indicated  
 Project No:  
 Date:

A105



CONTRACTOR MUST OBTAIN A COPY AND VERIFY ALL DIMENSIONS ON THE JOB.  
24 HOUR SCALE DRAWING.  
ALL DIMENSIONS, SPECIFICATIONS AND RELATED DOCUMENTS ARE THE COPYRIGHT PROPERTY OF THE ARCHITECT. NO PART OF THIS DOCUMENT IS TO BE REPRODUCED OR TRANSMITTED IN ANY FORM OR BY ANY MEANS, ELECTRONIC OR MECHANICAL, WITHOUT THE WRITTEN PERMISSION OF THE ARCHITECT.  
THIS DRAWING IS NOT TO BE USED FOR CONSTRUCTION UNLESS SIGNED BY THE ARCHITECT.

ISSUED  
No. Date Description  
1 2020-05-28 ISSUED FOR CD 30%



- GENERAL NOTES - PARTITIONS:**
- OPUSCULE BOARD PARTITIONS AND FLOORING:
    - EXTEND OPUSCULE BOARD PARTITIONS FULL HEIGHT TO US OF FLOOR OR ROOF SLAB ABOVE, UNLESS OTHERWISE INDICATED. AT ACCESS FLOORS, OPUSCULE BOARD PARTITIONS EXTEND TO STRUCTURAL SLAB BELOW UNLESS OTHERWISE INDICATED.
    - AS NON-FIRED FLOOR PARTITIONS, PROVIDE JOINT SEALANT AT PARTNER JOINTS AND ALL PENETRATIONS THROUGH OPUSCULE BOARD.
    - PROVIDE BACKER PLATES FOR HANDRAIL SUPPORT, BUMPERS, RAILS, WALL MOUNTED MALLWORK, AND ROOM ACCESSORIES, TACK BORDERS AND WRITING SURFACES ETC. REFER TO PLANS FOR EXTENT AND LOCATIONS.
    - 4.4 PARTITIONS TO RECEIVE CERAMIC TILE WALL FINISH PROVIDE TILE BACKER BOARD IN LEVEL OF OPUSCULE BOARD BEHIND TILES. BACKER BOARD TO BE FIRE RATED TYPE IF FIRE RATED PARTITIONS.
    - AT ACUSTIC PARTITIONS, RECESSED ELECTRICAL BOXES ON OPPOSITE SIDES OF PARTITION TO BE STAGGERED MINIMUM 600MM.
    - SEE ROOM FINISH SCHEDULE FOR INTERIOR FINISHES.
    - HEIGHT OF FINISHED WALL TO BE 2500mm ABOVE FINISHED CEILING UNLESS OTHERWISE NOTED.
    - SLAB FINISH FOR OPUSCULE BOARD PARTITIONS AND FLOORING:
      - IDENTIFY ASSEMBLY TO EXTEND MIN. 150mm ABOVE FINISHED CEILING.
      - IDENTIFY ASSEMBLY TO STOP AT US OF FINISHED CEILING.
      - IDENTIFY DOWN WALL - HEIGHT INDICATED ON FLOOR PLAN. CAP WITH GB UNLESS OTHERWISE INDICATED.
      - IDENTIFY ASSEMBLY TO PLACE GB WITH IMPACT RESISTANT GB ON ONE SIDE ONLY (REFER TO REF).
      - IDENTIFY ASSEMBLY TO REPLACE GB WITH IMPACT RESISTANT GB ON BOTH SIDES.
      - IDENTIFY ENGINEERED METAL SUPPORT SYSTEM.
      - IDENTIFY FINISH TO APPLY TO US OF FLOOR OR ROOF SLAB ABOVE.
      - IDENTIFY FLOOR FINISH TO EXTEND BELOW ASSEMBLY FROM US OF ACCESS FLOOR TO TO SLAB BELOW. REFER TO ARCH.
      - IDENTIFY PARTITION EXTEND FROM US ACCESS FLOOR TO US OF FLOOR OR ROOF SLAB ABOVE.
  - ULC LISTINGS PROVIDED FOR FIRE RATED PARTITIONS ARE FOR REFERENCE ONLY. PROVIDE APPROPRIATE MANUFACTURER SPECIFIC ULC LISTINGS FOR REVIEW AS REQUIRED IN THE SPECIFICATIONS.

- CONCRETE MASONRY UNIT WALLS AND PARTITIONS:**
  - ALL CONCRETE MASONRY UNIT WALLS AND PARTITIONS TO US OF FLOOR OR ROOF SLAB ABOVE, UNLESS NOTED OTHERWISE. AT ACCESS FLOORS, CONCRETE MASONRY UNIT PARTITIONS EXTEND FROM STRUCTURAL SLAB BELOW UNLESS OTHERWISE INDICATED.
  - PROVIDE COMPRESSED JOINT SEALANT CONTINUOUS AT TOP OF ALL CHASE WALLS AND PARTITIONS. SEAL JOINTS WHERE DORSAL PENETRATIONS IN WALL RATED PARTITION.
  - PROVIDE LATERAL BRACING AT TOP OF CHASE WALLS AND PARTITIONS. REFER TO STRUCTURAL FOR DETAILS.
  - PROVIDE REINFORCEMENT OF CHASE WALLS AND PARTITIONS AS REQUIRED BY STRUCTURE.
- FIRE SEPARATIONS:**
  - REFER TO FIRE SEPARATION PLANS - FIRE SEPARATION REQUIREMENTS.
  - AT ALL FIRE RATED PARTITIONS, INSTALL CONTINUOUS PRESTOPPING AND GASKET SEALS AT ALL PENETRATIONS, JOINTS AND PENETRATIONS.
  - AT RECESSED PANEL INSTALLATIONS (E.G. ELECTRICAL PANELS) WITHIN RATED WALLS, PROVIDE CONTINUITY OF THE RATED RATING BEHIND AND AROUND THE PANEL.

- GENERAL NOTES - PLANS:**
- REFER TO BUILDING ELEMENTS SCHEDULE FOR EXTERIOR WALL, PARTITION, ROOF, CEILING AND SOFFIT TYPES.
  - REFER TO MECHANICAL AND ELECTRICAL DRAWINGS FOR ADDITIONAL REQUIREMENTS.
  - AT LOCATIONS WHERE MECH. DUCTS INTERFERE WITH FULL HEIGHT CONSTRUCTION OF INTERIOR PARTITIONS, OFFICE PARTITION ABOVE CEILING AND BRACE AS REQUIRED. MAXIMUM FIRE SEPARATION RATING OF PARTITION, OR SETTING OF PARTITIONS, WILL ONLY BE PERMITTED WHERE DUCTWORK CANNOT BE POSITIONED.
  - ALL DIMENSIONS ARE TAKEN TO FACE OF MASONRY OR CONCRETE AT MASONRY AND CONCRETE WALLS AND PARTITIONS. AT STEEL, STUD PARTITIONS, DIMENSIONS ARE TAKEN TO FACE OF OPUSCULE BOARD, UNLESS OTHERWISE NOTED.
  - INCREASE THICKNESS OF WALLS OR FLOOR OUT WALL THICKNESS AS REQUIRED TO ACCOMMODATE MECHANICAL AND ELECTRICAL PANELS AND SERVICES. MAINTAIN FIRE SEPARATION AROUND BACK OF PANELS WHERE APPLICABLE.
  - FOR DIMENSIONS OF CONCRETE REFER TO SLAB EDGE DRAWINGS.

**Diamond Schmitt Architects**  
KWC Architects Inc.  
Architects in Joint Venture for the OPL/AC Joint Facility  
384 Adelaide Street West, Suite 100, Toronto, Canada M5H 1P7  
Tel: 416 862 8800 Fax: 416 862 5508 info@dsai.ca www.dsai.ca

**OTTAWA PUBLIC LIBRARY AND ARCHIVES CANADA JOINT FACILITY**

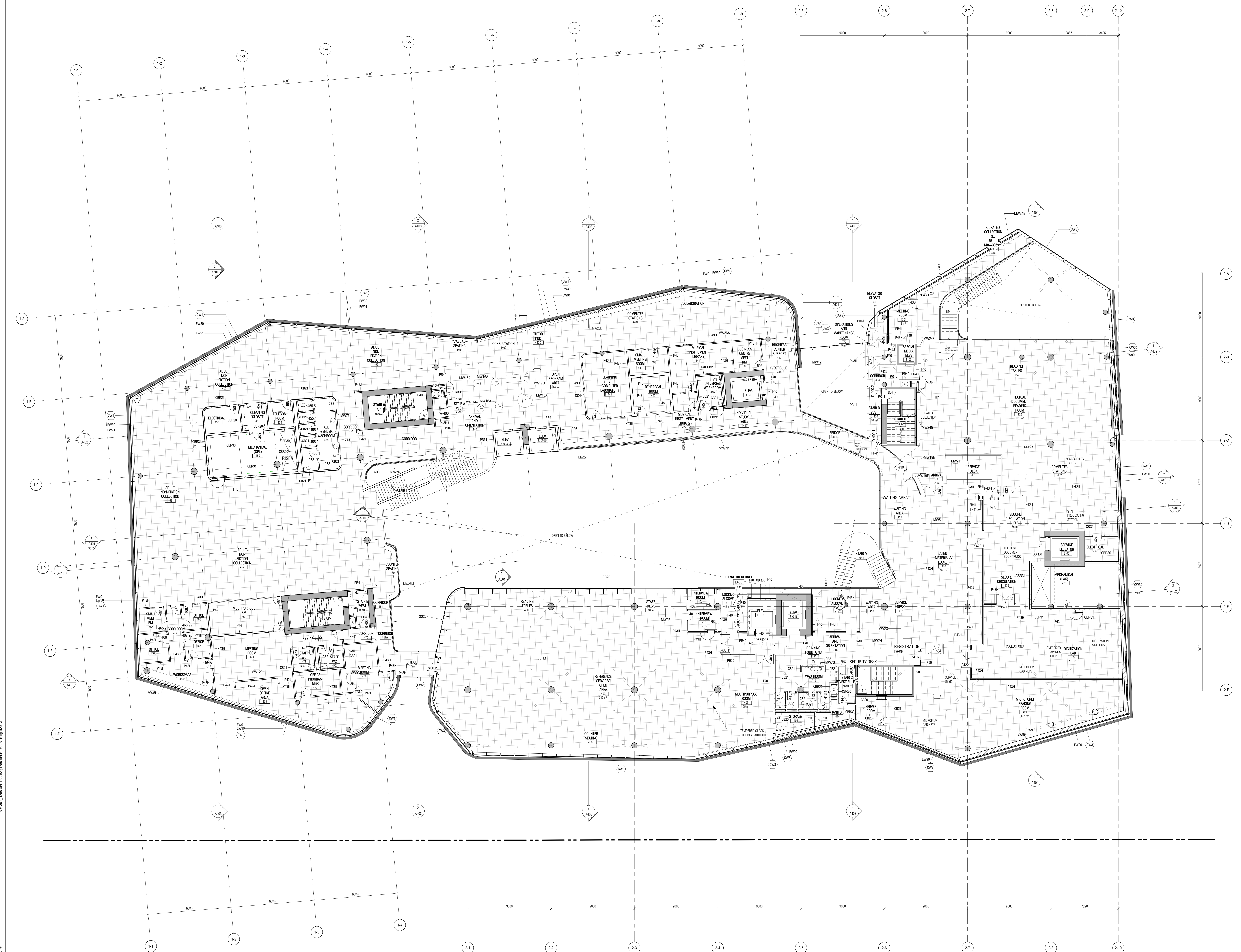
**LEVEL 3 FLOOR PLAN**

Scale: As indicated  
Project No:  
Date:

**A106**

2020-05-28 13:23:31 PM  
B:\387-1835-OPL-AC-CD\1835-ARCH-CD3-Bldg-REV17.dwg





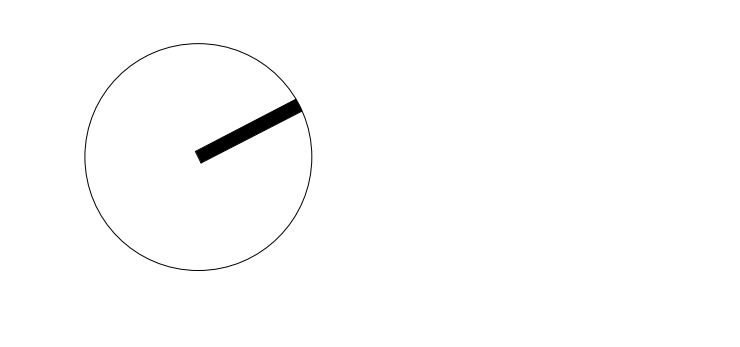
CONTRACTOR MUST OBTAIN A WRITTEN AGREEMENT FROM THE ARCHITECT BEFORE ANY CONSTRUCTION BEGINS ON THIS PLAN.  
 ALL DIMENSIONS, SPECIFICATIONS AND RELATED DOCUMENTS ARE THE PROPERTY OF THE ARCHITECT.  
 THE ARCHITECT IS NOT RESPONSIBLE FOR THE ACCURACY OF THE DIMENSIONS OR SPECIFICATIONS OF THE WORKMANSHIP OF THE CONTRACTOR.  
 THIS DRAWING IS NOT TO BE USED FOR CONSTRUCTION UNLESS APPROVED BY THE ARCHITECT.

**ISSUED**

No.	Date	Description
1	2020-05-28	ISSUED FOR CD 30%

- GENERAL NOTES - PARTITIONS:**
1. Gypsum board partitions and furring:
    - 1.1. EXTEND GYPSUM BOARD PARTITIONS FULL HEIGHT TO US OF FLOOR OR ROOF SLAB ABOVE, UNLESS OTHERWISE INDICATED. AT ACCESS FLOORS, GYPSUM BOARD PARTITIONS EXTEND TO STRUCTURAL SLAB BELOW UNLESS OTHERWISE INDICATED.
    - 1.2. AT NON-FIRED FIRE SEPARATIONS, GYPSUM BOARD FIRE RATED PARTITIONS, PROVIDE JOINT SEALANT AT PERIMETER JOINTS AND ALL PENETRATIONS THROUGH GYPSUM BOARD.
    - 1.3. PROVIDE BACKER PLATES FOR HANDRAIL SUPPORT, BUMPER RAILS, WALL MOUNTED MALLWORK, WINDOW ACCESSORIES, TACK BOARDING AND MOUNTING SURFACES ETC. REFER TO PLANS FOR EXTENT AND LOCATIONS.
    - 1.4. AT PARTITIONS TO RECEIVE CERAMIC TILE WALL FINISH PROVIDE TILE BACKER BOARD IN LEVEL OF GYPSUM BOARD BEHIND TILES. BACKER BOARD TO BE FIRE RATED TYPE IF FIRE RATED PARTITIONS.
    - 1.5. AT ACOUSTIC PARTITIONS, RECESSED ELECTRICAL BOXES ON OPPOSITE SIDES OF PARTITION TO BE STAGGERED MINIMUM 600MM.
    - 1.6. SEE ROOM FINISH SCHEDULE FOR INTERIOR FINISHES.
    - 1.7. HEIGHT OF FINISH WALL TO BE 1500mm UNLESS OTHERWISE NOTED.
    - 1.8. SURFACES FOR GYPSUM BOARD PARTITIONS AND FURRING:
      - A: DENOTES ASSEMBLY TO EXTEND MIN. 150mm ABOVE FINISHED CEILING.
      - B: DENOTES ASSEMBLY TO STOP AT US OF FINISHED CEILING.
      - C: DENOTES LOW WALL - HEIGHT INDICATED ON FLOOR PLANS. CAP WITH GB UNLESS OTHERWISE INDICATED.
      - D: DENOTES ASSEMBLY TO FLOOR OR ROOF SLAB ABOVE.
      - E: DENOTES ASSEMBLY TO FLOOR OR ROOF SLAB ABOVE WITH IMPACT RESISTANT GB ON ONE SIDE ONLY (REFER TO REF).
      - F: DENOTES ENGINEERED METAL SUPPORT SYSTEM.
      - G: DENOTES FURRING TO EXTEND TO US OF FLOOR OR ROOF SLAB ABOVE.
      - H: DENOTES FURRING OVER TO EXTEND BELOW ASSEMBLY FROM US OF ACCESS FLOOR TO TO SLAB BELOW. REFER TO ARCH.
      - J: DENOTES PARTITION EXTENDING FROM TO ACCESS FLOOR TO US OF FLOOR OR ROOF SLAB ABOVE.
    - 1.9. ULC LISTINGS PROVIDED FOR FIRE RATED PARTITIONS ARE FOR REFERENCE ONLY. PROVIDE APPROPRIATE MANUFACTURER SPECIFIC ULC LISTINGS FOR REVIEW AS REQUIRED IN THE SPECIFICATIONS.
  2. CONCRETE MASONRY UNIT WALLS AND PARTITIONS:
    - 2.1. ALL CONCRETE MASONRY UNIT WALLS AND PARTITIONS TO US OF FLOOR OR ROOF SLAB ABOVE, UNLESS NOTED OTHERWISE. AT ACCESS FLOORS, CONCRETE MASONRY UNIT PARTITIONS EXTEND FROM STRUCTURAL SLAB BELOW UNLESS OTHERWISE INDICATED.
    - 2.2. PROVIDE COMPRESSIBLE JOINT FILLER CONTINUOUS AT TOP OF ALL CMU WALLS AND PARTITIONS. SEAL JOINTS WHERE DESIRED. PROVIDE PRESTRESSING AND SINKING SCALES AT PERIMETER JOINTS AND PENETRATIONS IN FIRE RATED PARTITIONS.
    - 2.3. PROVIDE LATERAL BRACING AT TOP OF CMU WALLS AND PARTITIONS. REFER TO STRUCTURAL FOR DETAILS.
    - 2.4. PROVIDE REINFORCEMENT OF CMU WALLS AND PARTITIONS AS REQUIRED BY STRUCTURE.
  3. FIRE SEPARATIONS:
    - 3.1. REFER TO FIRE SEPARATION PLANS - FIRE SEPARATION REQUIREMENTS.
    - 3.2. AT ALL FIRE RATED PARTITIONS, INSTALL CONTINUOUS PRESTRESSING AND SINKING SCALES AT ALL PERIMETER JOINTS AND PENETRATIONS.
    - 3.3. AT RECESSED PANEL INSTALLATIONS (E.G. ELECTRICAL PANELS) WITHIN RATED WALLS/ROOF CEILING, PROVIDE CONTINUOUS RATING BEHIND AND AROUND THE PANEL.
- GENERAL NOTES - PLANS:**
1. REFER TO BUILDING ELEMENTS SCHEDULE FOR EXTERIOR WALL, PARTITION, ROOF, CEILING AND SOFFIT TYPES.
  2. REFER TO MECHANICAL AND ELECTRICAL DRAWINGS FOR ADDITIONAL REQUIREMENTS.
  3. AT LOCATIONS WHERE MECH. DUCTS INTERFERE WITH FULL HEIGHT CONSTRUCTION OF INTERIOR PARTITIONS, OFFICE PARTITION ABOVE CEILING AND BRACE AS REQUIRED. MAXIMUM FIRE SEPARATION RATING OF PARTITION. ON SETTING OF PARTITIONS WALL ONLY BE PARTITIONED WHERE DUCTWORK CANNOT BE POSITIONED.
  4. ALL DIMENSIONS ARE TAKEN TO FACE OF MASONRY OR CONCRETE AT MASONRY AND CONCRETE WALLS AND PARTITIONS. AT STEEL STUD PARTITIONS, DIMENSIONS ARE TAKEN TO FACE OF GYPSUM BOARD, UNLESS OTHERWISE NOTED.
  5. INCREASE THICKNESS OF WALLS OR FLOOR OUT WALL THICKNESS AS REQUIRED TO ACCOMMODATE MECHANICAL AND ELECTRICAL PANELS AND SERVICES. MAINTAIN FIRE SEPARATION AROUND BACK OF PANELS WHERE APPLICABLE.
  6. FOR DIMENSIONS OF CONCRETE REFER TO SLAB EDGE DRAWINGS.

**Diamond Schmitt Architects**  
**KWC Architects Inc.**  
 Architects in Joint Venture for the OPL/AC Joint Facility  
 384 Adelaide Street West, Suite 100, Toronto, Canada M5H 1P7  
 Tel: 416 862 8800 Fax: 416 862 5508 info@dsai.ca www.dsai.ca



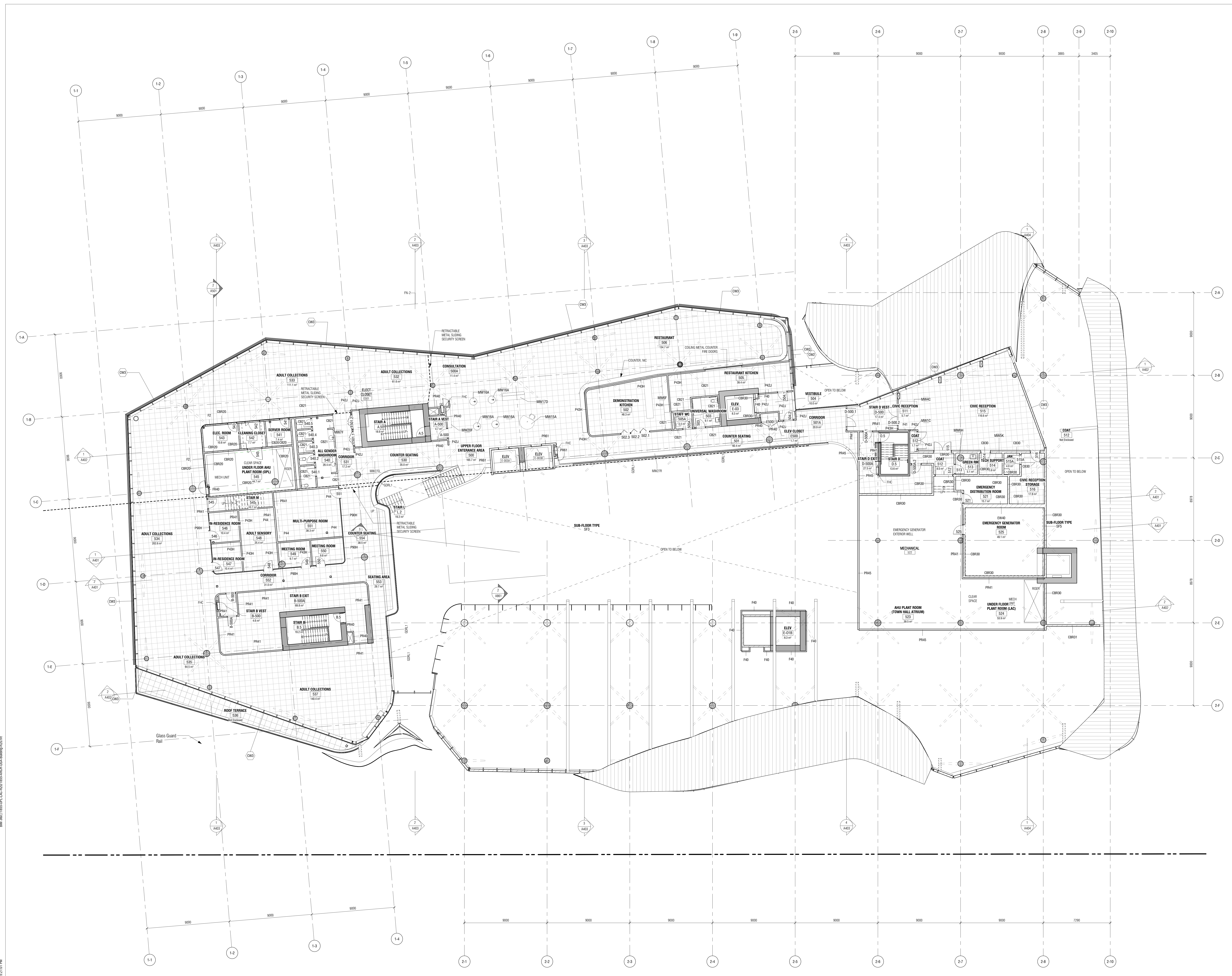
**OTTAWA PUBLIC LIBRARY AND ARCHIVES CANADA JOINT FACILITY**

**LEVEL 4 FLOOR PLAN**

Scale: As indicated  
 Project No:  
 Date:

**A107**





CONTRACTOR MUST CHECK & VERIFY ALL DIMENSIONS ON THE JOB.  
 24 HOUR SCALE DRAWING.  
 ALL DIMENSIONS, SPECIFICATIONS AND RELATED DOCUMENTS ARE THE COPYRIGHT PROPERTY OF THE ARCHITECT AND SHALL BE KEPT UNDER STRICT CONTROL BY THE ARCHITECT. NO PART OF THIS DRAWING IS TO BE REPRODUCED OR TRANSMITTED IN ANY FORM OR BY ANY MEANS WITHOUT THE WRITTEN PERMISSION OF THE ARCHITECT.  
 THIS DRAWING IS NOT TO BE USED FOR CONSTRUCTION UNLESS SIGNED BY THE ARCHITECT.

ISSUED

No.	Date	Description
1	2020-05-28	ISSUED FOR CD 30%

- GENERAL NOTES - PARTITIONS:**
1. Gypsum board partitions and flooring:
    - 1.1 EXTEND GYPSUM BOARD PARTITIONS FULL HEIGHT TO US OF FLOOR OR ROOF SLAB ABOVE, UNLESS OTHERWISE INDICATED. AT ACCESS FLOORS, GYPSUM BOARD PARTITIONS EXTEND TO STRUCTURAL SLAB BELOW UNLESS OTHERWISE INDICATED.
    - 1.2 AT NON-FIRED FIRE SEPARATIONS, ADJUST AND FIRE RATED PARTITIONS, PROVIDE JOINT SEALANT AT PERIMETER JOINTS AND ALL PENETRATIONS THROUGH GYPSUM BOARD.
    - 1.3 PROVIDE BACKER PLATES FOR HANDRAIL SUPPORT, BUMPER RAILS, WALL MOUNTED MILLWORK, WINDOW ACCESSORIES, TACK BOARDING AND WRITING SURFACES ETC. REFER TO PLANS FOR EXTENT AND LOCATIONS.
    - 1.4 AT PARTITIONS TO RECEIVE CERAMIC TILE WALL FINISH PROVIDE TILE BACKER BOARD IN LEVEL OF GYPSUM BOARD BEHIND TILES, BACKER BOARD TO BE FIRE RATED TYPE AT FIRE RATED PARTITIONS.
    - 1.5 AT ACOUSTIC PARTITIONS, RECESSED ELECTRICAL BOXES ON OPPOSITE SIDES OF PARTITION TO BE STAGGERED MINIMUM 600MM.
    - 1.6 SEE ROOM FINISH SCHEDULE FOR INTERIOR FINISHES.
    - 1.7 HEIGHT OF FINISH WALL TO BE 1200MM ABOVE FINISHED CEILING UNLESS OTHERWISE NOTED.
    - 1.8 SURFACES FOR GYPSUM BOARD PARTITIONS AND FLOORING:
      - A: DENOTES ASSEMBLY TO EXTEND MIN. 150MM ABOVE FINISHED CEILING.
      - B: DENOTES ASSEMBLY TO STOP AT US OF FINISHED CEILING.
      - C: DENOTES LOW WALL - HEIGHT INDICATED ON FLOOR/ROOF PLAN WITH OR UNLESS OTHERWISE INDICATED.
      - D: DENOTES ASSEMBLY TO REPLACE GB WITH IMPACT RESISTANT GB ON ONE SIDE ONLY (REFER TO REF).
      - E: DENOTES ASSEMBLY TO REPLACE GB WITH IMPACT RESISTANT GB ON BOTH SIDES.
      - F: DENOTES ENGINEERED METAL SUPPORT SYSTEM.
      - G: DENOTES FINISHING TO EXTEND TO US OF FLOOR OR ROOF SLAB ABOVE.
      - H: DENOTES FLOOR OVER TO EXTEND BELOW ASSEMBLY FROM US OF ACCESS FLOOR TO TO SLAB BELOW (REFER TO FINISH).
      - J: DENOTES PARTITION EXTENDING FROM TO ACCESS FLOOR TO US OF FLOOR OR ROOF SLAB ABOVE.
    - 1.9 ULC LISTINGS PROVIDED FOR FIRE RATED PARTITIONS ARE FOR REFERENCE ONLY. PROVIDE APPROPRIATE MANUFACTURER SPECIFIC ULC LISTINGS FOR REVIEW AS REQUIRED IN THE SPECIFICATIONS.
  2. CONCRETE MASONRY UNIT WALLS AND PARTITIONS:
    - 2.1 ALL CONCRETE MASONRY UNIT WALLS AND PARTITIONS TO US OF FLOOR OR ROOF SLAB ABOVE, UNLESS NOTED OTHERWISE. AT ACCESS FLOORS, CONCRETE MASONRY UNIT PARTITIONS EXTEND FROM STRUCTURAL SLAB BELOW UNLESS OTHERWISE INDICATED.
    - 2.2 PROVIDE COMPRESSIBLE JOINT FILLER CONTINUOUS AT TOP OF ALL CMU WALLS AND PARTITIONS. SEAL JOINTS WHERE OVERSPREAD. PROVIDE PRESTRESSING AND SINKER SLABS AT PERIMETER JOINTS AND PENETRATIONS IN FIRE RATED PARTITIONS.
    - 2.3 PROVIDE LATERAL BRACING AT TOP OF CMU WALLS AND PARTITIONS. REFER TO STRUCTURAL FOR DETAILS.
    - 2.4 PROVIDE REINFORCEMENT OF CMU WALLS AND PARTITIONS AS REQUIRED BY STRUCTURAL.
  3. FIRE SEPARATIONS:
    - 3.1 REFER TO FIRE SEPARATION PLANS - FIRE SEPARATION REQUIREMENTS.
    - 3.2 AT ALL FIRE RATED PARTITIONS, INSTALL CONTINUOUS PRESTRESSING AND SINKER SLABS AT ALL PERIMETER JOINTS AND PENETRATIONS.
    - 3.3 AT RECESSED PANEL INSTALLATIONS (E.G. ELECTRICAL PANELS) WITHIN RATED WALLS PROVIDE CONTINUITY OF THE RATED RATING BEHIND AND AROUND THE PANEL.

- GENERAL NOTES - PLANS:**
1. REFER TO BUILDING ELEMENTS SCHEDULE FOR EXTERIOR WALL, PARTITION, ROOF, CEILING AND SKYRIT FINISHES.
  2. REFER TO MECHANICAL AND ELECTRICAL DRAWINGS FOR ADDITIONAL REQUIREMENTS.
  3. AT LOCATIONS WHERE MECH. DUCTS INTERFERE WITH FULL HEIGHT CONSTRUCTION OF INTERIOR PARTITIONS, OFFICE PARTITION ABOVE CEILING AND BRACE AS REQUIRED. MAXIMUM FIRE SEPARATION HEIGHT OF PARTITION. ON SETTING OF PARTITIONS WALLS CAN ONLY BE PERMITTED WHERE OCCUPANCY CANNOT BE POSITIONED.
  4. ALL DIMENSIONS ARE TAKEN TO FACE OF MASONRY OR CONCRETE AT MASONRY AND CONCRETE WALLS AND PARTITIONS. AT STEEL STUD PARTITIONS, DIMENSIONS ARE TAKEN TO FACE OF GYPSUM BOARD, UNLESS OTHERWISE NOTED.
  5. INCREASE THICKNESS OF WALLS OR FLOOR OUT WALL THICKNESS AS REQUIRED TO ACCOMMODATE MECHANICAL AND ELECTRICAL PANELS AND SERVICES. MAINTAIN FIRE SEPARATION INCLUDING BACK OF PANELS WHERE APPLICABLE.
  6. FOR DIMENSIONS OF CONCRETE REFER TO SLAB EDGE DRAWINGS.

**Diamond Schmitt Architects**  
**KWC Architects Inc.**  
 Architects in Joint Venture for the OPL/AG Joint Facility  
 384 Adelaide Street West, Suite 100, Toronto, Canada M5H 1P7  
 Tel: 416 862 8800 Fax: 416 862 5508 info@dsai.ca www.dsai.ca

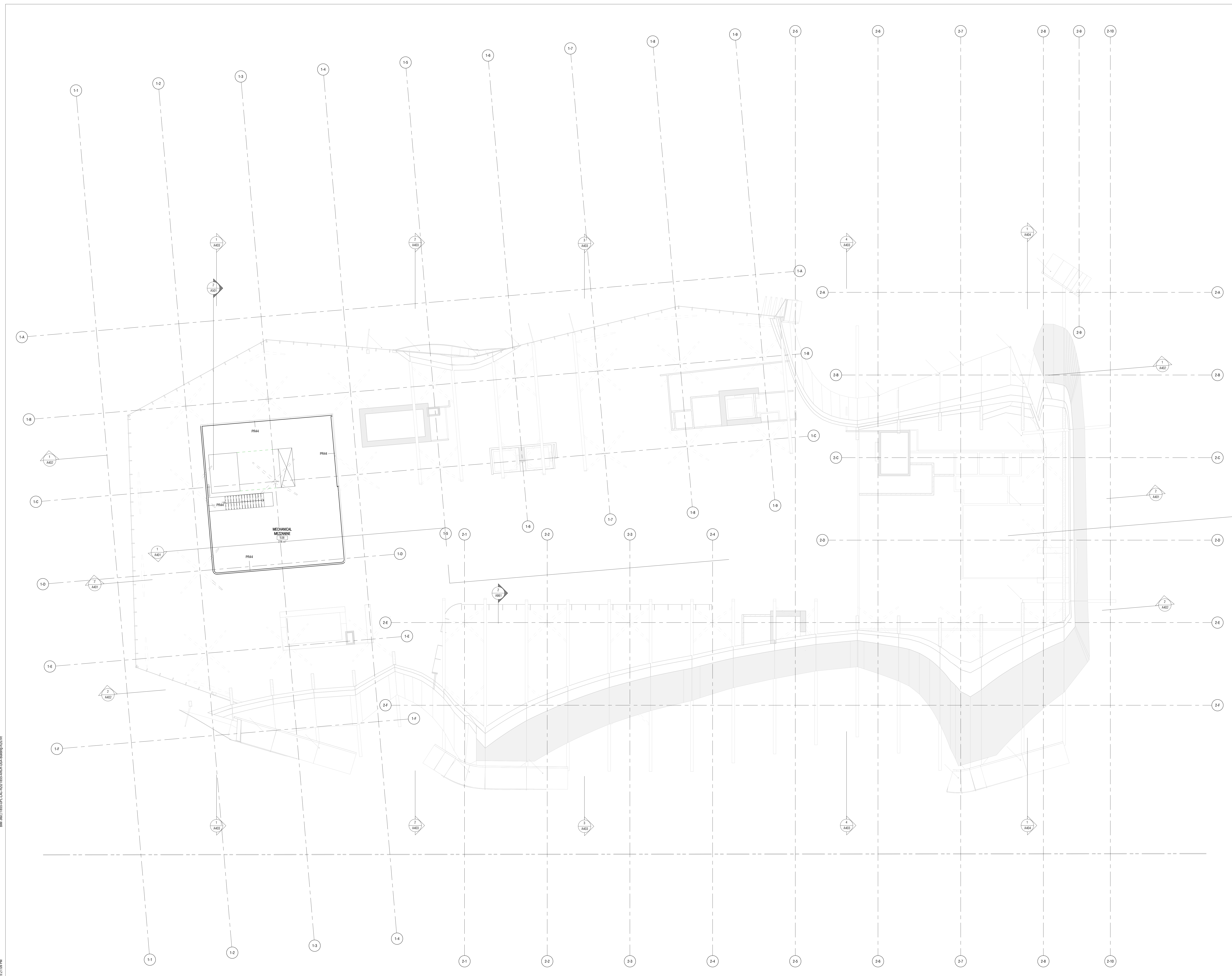


LEVEL 5 FLOOR PLAN

Scale: As indicated  
 Project No:  
 Date:

A108





CONTRACTOR MUST OBTAIN A COPY OF ALL DRAWINGS ON THE JOB.  
 24 HOUR SCALE DRAWING.  
 ALL DIMENSIONS, SPECIFICATIONS AND RELATED DOCUMENTS ARE THE COPYRIGHT PROPERTY OF THE ARCHITECT. NO PART OF THIS DRAWING IS TO BE REPRODUCED OR TRANSMITTED IN ANY FORM OR BY ANY MEANS, ELECTRONIC OR MECHANICAL, INCLUDING PHOTOCOPYING, RECORDING, OR BY ANY INFORMATION STORAGE AND RETRIEVAL SYSTEM, WITHOUT THE WRITTEN PERMISSION OF THE ARCHITECT.  
 THIS DRAWING IS NOT TO BE USED FOR CONSTRUCTION UNLESS SIGNED BY THE ARCHITECT.

No.	Date	Description
1	2020-05-28	ISSUED FOR CD 30%

- GENERAL NOTES - PARTITIONS:**
- 1. Gypsum Board Partitions and Furring:**
    - 1.1 EXTEND GYPSUM BOARD PARTITIONS FULL HEIGHT TO US OF FLOOR OR ROOF SLAB ABOVE, UNLESS OTHERWISE INDICATED. AT ACCESS FLOORS, GYPSUM BOARD PARTITIONS EXTEND TO STRUCTURAL SLAB BELOW UNLESS OTHERWISE INDICATED.
    - 1.2 AT NON-FIRED FIRE SEPARATIONS, ACUSTIC AND FIRE RATED PARTITIONS, PROVIDE JOINT SEALANT AT PERIMETER JOINTS AND ALL PENETRATIONS THROUGH GYPSUM BOARD.
    - 1.3 PROVIDE BACKER PLATES FOR HANDRAIL SUPPORT, BUMPER RAILS, WALL MOUNTED MALLWORK, WINDOW ACCESSORIES, TACK BOARDING AND WRITING SURFACES ETC. REFER TO PLANS FOR EXTENT AND LOCATIONS.
    - 1.4 AT PARTITIONS TO RECEIVE CERAMIC TILE WALL FINISH PROVIDE TILE BACKER BOARD IN LEVEL OF GYPSUM BOARD BEHIND TILES. BACKER BOARD TO BE FIRE RATED TYPE TO RECEIVE PARTITIONS.
    - 1.5 AT ACUSTIC PARTITIONS, RECESSED ELECTRICAL BOXES ON OPPOSITE SIDES OF PARTITION TO BE STAGGERED MINIMUM 600mm.
    - 1.6 SEE ROOM FINISH SCHEDULE FOR INTERIOR FINISHES.
    - 1.7 HEIGHT OF FINISHED WALL TO BE 2500mm UNLESS OTHERWISE NOTED.
    - 1.8 SURFACES FOR GYPSUM BOARD PARTITIONS AND FURRING:
      - A: DENOTES ASSEMBLY TO EXTEND MIN. 150mm ABOVE FINISHED CEILING.
      - B: DENOTES ASSEMBLY TO STOP AT US OF FINISHED CEILING.
      - C: DENOTES LOW WALL - HEIGHT INDICATED ON FLOOR PLAN.
      - D: DENOTES ASSEMBLY REPLACES GB WITH IMPACT RESISTANT GB ON ONE SIDE ONLY (REFER TO REF).
      - E: DENOTES ASSEMBLY REPLACES GB WITH IMPACT RESISTANT GB ON BOTH SIDES.
      - F: DENOTES ENGINEERED METAL SUPPORT SYSTEM.
      - G: DENOTES FURRING TO EXTEND TO US OF FLOOR OR ROOF SLAB ABOVE.
      - H: DENOTES FURRING DIVIDER TO EXTEND BELOW ASSEMBLY FROM US OF ACCESS FLOOR TO US SLAB BELOW (REFER TO SLAB).
      - J: DENOTES PARTITION EXTENDS FROM TO ACCESS FLOOR TO US OF FLOOR OR ROOF SLAB ABOVE.
    - 1.9 ULC LISTINGS PROVIDED FOR FIRE RATED PARTITIONS ARE FOR REFERENCE ONLY. PROVIDE APPROPRIATE MANUFACTURER SPECIFIC ULC LISTINGS FOR REVIEW AS REQUIRED IN THE SPECIFICATIONS.
  - 2. CONCRETE MASONRY UNIT WALLS AND PARTITIONS:**
    - 2.1 ALL CONCRETE MASONRY UNIT WALLS AND PARTITIONS TO US OF FLOOR OR ROOF SLAB ABOVE, UNLESS NOTED OTHERWISE. AT ACCESS FLOORS, CONCRETE MASONRY UNIT PARTITIONS EXTEND FROM STRUCTURAL SLAB BELOW UNLESS OTHERWISE INDICATED.
    - 2.2 PROVIDE COMPRESSIBLE JOINT FILLER CONTINUED AT TOP OF ALL CMU WALLS AND PARTITIONS. SEAL JOINTS WHERE DESIRED. PROVIDE PRESTRESSING AND SHOWN SEALS AT PERIMETER JOINTS AND PENETRATIONS IN FIRE RATED PARTITIONS.
    - 2.3 PROVIDE LATERAL BRACING AT TOP OF CMU WALLS AND PARTITIONS. REFER TO STRUCTURAL FOR DETAILS.
    - 2.4 PROVIDE REINFORCEMENT OF CMU WALLS AND PARTITIONS AS REQUIRED BY STRUCTURAL.
  - 3. FIRE SEPARATIONS:**
    - 3.1 REFER TO FIRE SEPARATION PLANS - FIRE SEPARATION REQUIREMENTS.
    - 3.2 AT ALL FIRE RATED PARTITIONS, INSTALL CONTINUOUS PRESTRESSING AND SHOWN SEALS AT ALL PERIMETER JOINTS AND PENETRATIONS.
    - 3.3 AT RECESSED PANEL INSTALLATIONS (E.G. ELECTRICAL PANELS) WITHIN RATED WALLS PROVIDE CONTINUITY OF THE RATED RATING BEHIND AND AROUND THE PANEL.

- GENERAL NOTES - PLANS:**
- REFER TO BUILDING ELEMENTS SCHEDULE FOR EXTERIOR WALL, PARTITION, ROOF, CEILING AND SOFFIT TYPES.
  - REFER TO MECHANICAL AND ELECTRICAL DRAWINGS FOR ADDITIONAL REQUIREMENTS.
  - AT LOCATIONS WHERE MECH. DUCTS INTERFERE WITH FULL HEIGHT CONSTRUCTION OF INTERIOR PARTITIONS, OFFICE PARTITION ABOVE CEILING AND BRACE AS REQUIRED. MAXIMUM FIRE SEPARATION RATING OF PARTITION. OFFERING OF PARTITIONS WILL ONLY BE PERMITTED WHERE ELECTRICAL CANNOT BE POSITIONED.
  - ALL DIMENSIONS ARE TAKEN TO FACE OF MASONRY OR CONCRETE AT MASONRY AND CONCRETE WALLS AND PARTITIONS. AT STEEL, STUD PARTITIONS, DIMENSIONS ARE TAKEN TO FACE OF GYPSUM BOARD, UNLESS OTHERWISE NOTED.
  - INCREASE THICKNESS OF WALLS OR FLOOR OUT WALL THICKNESS AS REQUIRED TO ACCOMMODATE MECHANICAL AND ELECTRICAL PANELS AND SERVICES. MAINTAIN FIRE SEPARATION INCLUDING BACK OF PANELS WHERE APPLICABLE.
  - FOR DIMENSIONS OF CONCRETE REFER TO SLAB EDGE DRAWINGS.

**Diamond Schmitt Architects**  
**KWC Architects Inc.**  
 Architects in Joint Venture for the OPL/AG Joint Facility  
 384 Adelaide Street West, Suite 100, Toronto, Canada M5H 1P7  
 Tel: 416 862 8800 Fax: 416 862 5508 info@dsai.ca www.dsai.ca

**OTTAWA PUBLIC LIBRARY AND LIBRARY AND ARCHIVES CANADA JOINT FACILITY**

LEVEL 5 MEZZANINE

Scale: As indicated  
 Project No:  
 Date:

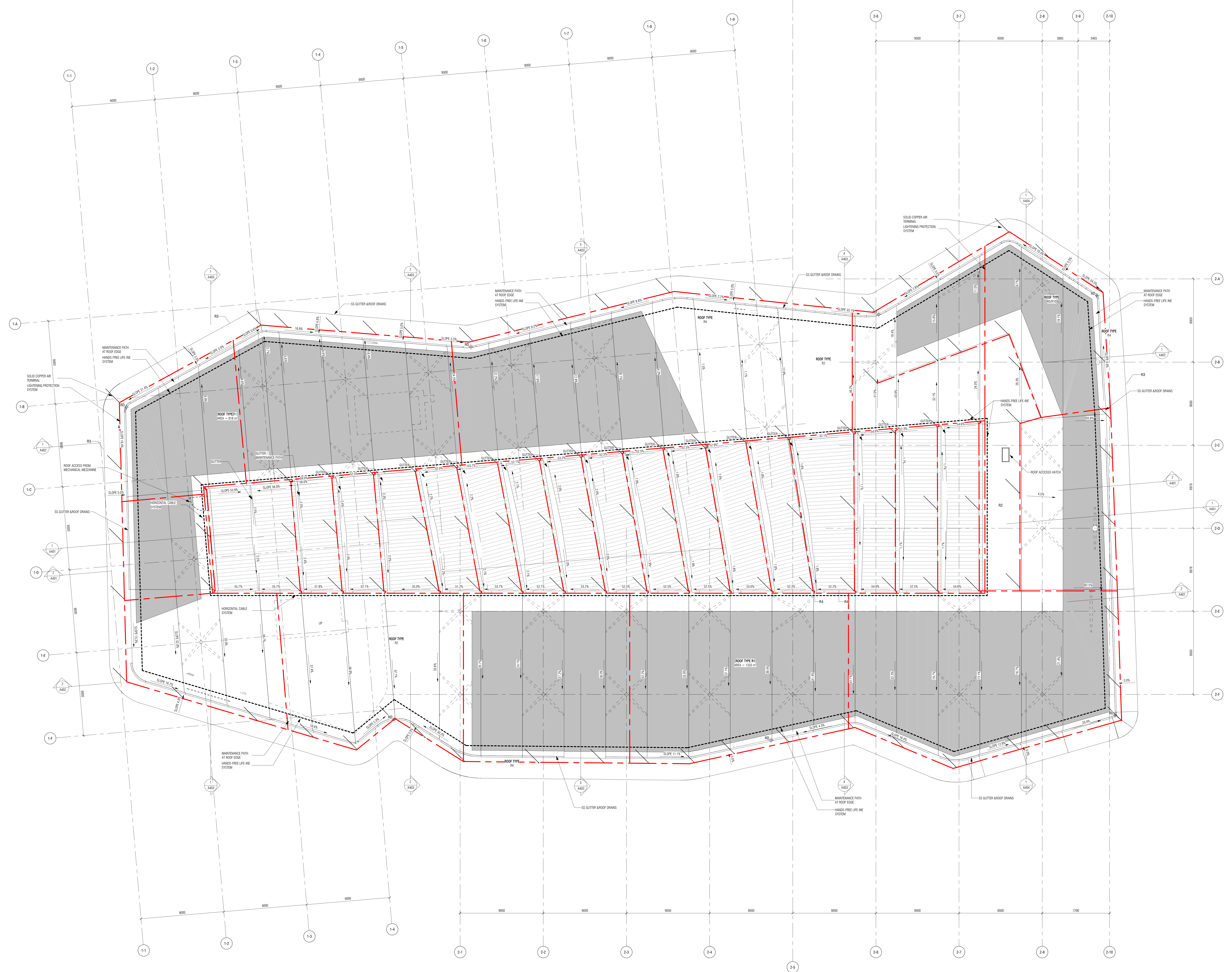
A109

2020-05-28 12:01 PM



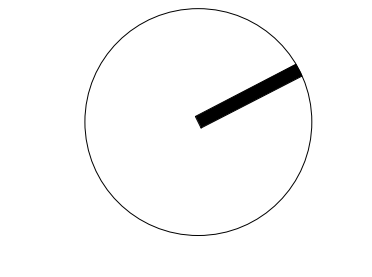
CONTRACTOR MUST CHECK & VERIFY ALL DIMENSIONS ON THE JOB.  
 2D ROOF DRAINAGE  
 ALL DIMENSIONS, SPECIFICATIONS AND RELATED DOCUMENTS ARE THE COPYRIGHT PROPERTY OF THE ARCHITECT AND SHALL BE RETURNED UPON REQUEST. REPRODUCTION OF DIMENSIONS, SPECIFICATIONS AND RELATED DOCUMENTS IN PART OR IN WHOLE IS FORBIDDEN WITHOUT THE WRITTEN PERMISSION OF THE ARCHITECT.  
 THIS DRAWING IS NOT TO BE USED FOR CONSTRUCTION UNTIL ISSUED BY THE ARCHITECT.

No.	Date	Description
1	2020-05-28	ISSUED FOR CD 30%



5/28/2020 11:53:44 AM

**Diamond Schmitt Architects**  
**KWC Architects Inc.**  
 Architects in Joint Venture for the OPL/AC Joint Facility  
 354 Adelaide Street West, Suite 100, Toronto, Canada M5H 1P7  
 Tel: 416 862 8800 Fax: 416 862 5508 info@dsai.ca www.dsai.ca



**OTTAWA PUBLIC LIBRARY AND ARCHIVES CANADA JOINT FACILITY**

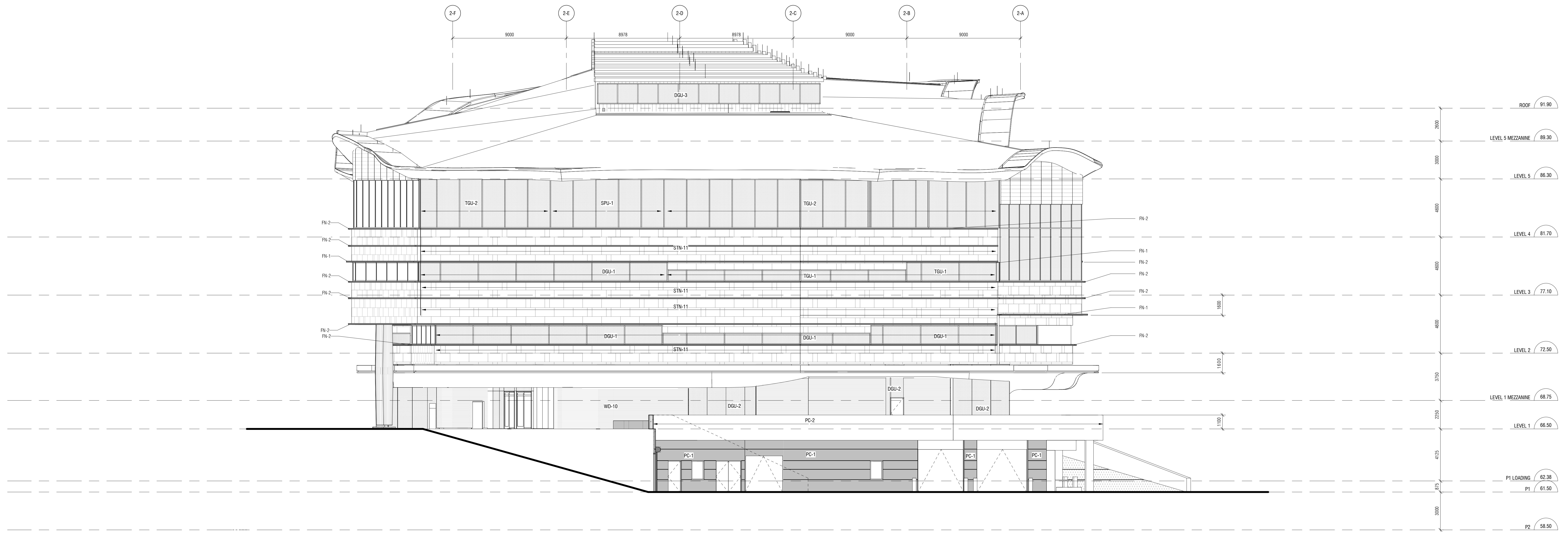
ROOF PLAN

Scale: 1:125  
 Project No:  
 Date:

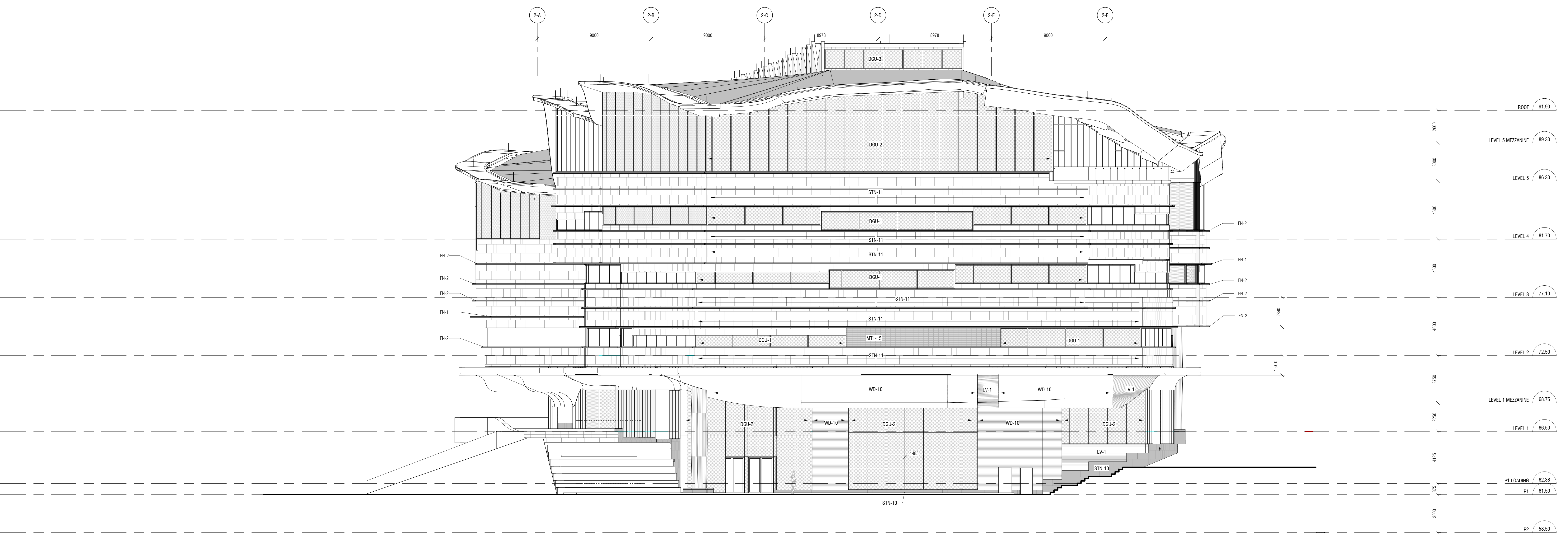
**A110**



CONTRACTOR MUST CHECK & VERIFY ALL DIMENSIONS ON THE JOB.  
 2D SHOT SKETCH DRAWING.  
 ALL DIMENSIONS, SPECIFICATIONS AND RELATED DOCUMENTS ARE THE COPYRIGHT PROPERTY OF THE ARCHITECT AND SHALL BE RETURNED UPON REQUEST. REPRODUCTION OF DRAWINGS, SPECIFICATIONS AND ALL RELATED DOCUMENTS IN PART OR IN WHOLE IS FORBIDDEN WITHOUT THE WRITTEN PERMISSION OF THE ARCHITECT.  
 THIS DRAWING IS NOT TO BE USED FOR CONSTRUCTION UNTIL SIGNED BY THE ARCHITECT.



1 EAST ELEVATION  
 A301 1:125



2 WEST ELEVATION  
 A301 1:125

**EXTERIOR MATERIALS LEGEND:**

	STN-11 NATURAL STONE ALGOUQUIN LIMESTONE, VENE CUT HONED, MAX PANEL SIZE 700mm x 1500mm
	STN-10 NATURAL STONE GRANITE, MARRAZZOCO BLACK, FLERY CUT, HONED.
	PC-1 PRECAST CONCRETE CUSTOM PIGMENT: LIGHT GREY
	PC-2 PRECAST CONCRETE CUSTOM PIGMENT: CHARCOAL
	WD-10 DOUGLASS FIR WOOD 130mm x 89mm HORIZONTAL WOOD STAMPING
	MTL-10, FN-1, FN-2 FLASHINGS, METAL PANEL, EXTRUSION OR BREAM SHAPE HIGH PERFORMANCE EXTERIOR COATING CUSTOM COLOUR: BRONZE METALLIC
	MTL-15 ARCHITECTURAL METAL MESH CUSTOM COLOUR: BRONZE
	DGU-1, DGU-2 CLEAR GLASS WITH BRD FRIENDLY FRIT PATTERN

**Diamond Schmitt Architects**  
**KWC Architects Inc.**  
 Architects in Joint Venture for the OPLAC Joint Facility  
 354 Adelaide Street West, Suite 100, Toronto, Canada M5H 1P7  
 Tel: 416 862 8800 Fax: 416 862 5508 info@dsai.ca www.dsai.ca

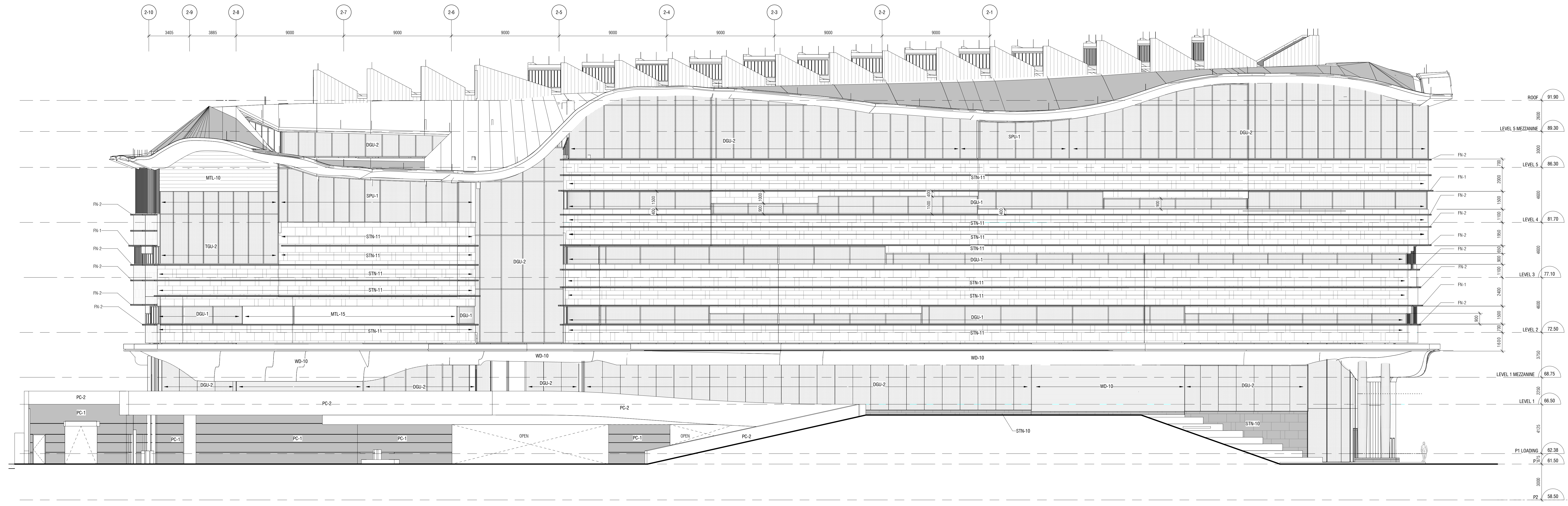
**OTTAWA PUBLIC LIBRARY AND  
 ARCHIVES CANADA  
 JOINT FACILITY**

**ELEVATIONS**

Scale: As indicated  
 Project No:  
 Date:



CONTRACTOR MUST CHECK & VERIFY ALL DIMENSIONS ON THE JOB.  
 2D SHOWN. DIMENSIONS AND RELATED DOCUMENTS ARE THE COPYRIGHT PROPERTY OF THE ARCHITECT AND ARE NOT TO BE REPRODUCED OR TRANSMITTED IN ANY FORM OR BY ANY MEANS, ELECTRONIC OR MECHANICAL, INCLUDING PHOTOCOPYING, RECORDING, OR BY ANY INFORMATION STORAGE AND RETRIEVAL SYSTEM, WITHOUT THE WRITTEN PERMISSION OF THE ARCHITECT.  
 THIS DRAWING IS NOT TO BE USED FOR CONSTRUCTION UNTIL SIGNED BY THE ARCHITECT.




**ISSUED**


No.	Date	Description
1	2020-05-28	ISSUED FOR CD 30%

**EXTERIOR MATERIALS LEGEND:**

- 

STN-11  
NATURAL STONE  
ALPINE/SLATE/MEADOWS/NEW CUT  
HONED. MAX PANEL SIZE 1000mm X 1000mm
- 

STN-10  
NATURAL STONE  
GRAVITE, MONTEBLACK,  
FLUORY CUT, HONED.
- 

PC-1  
PRECAST CONCRETE  
CUSTOM PIGMENT - LIGHT GREY
- 

PC-2  
PRECAST CONCRETE  
CUSTOM PIGMENT - CHARCOAL
- 

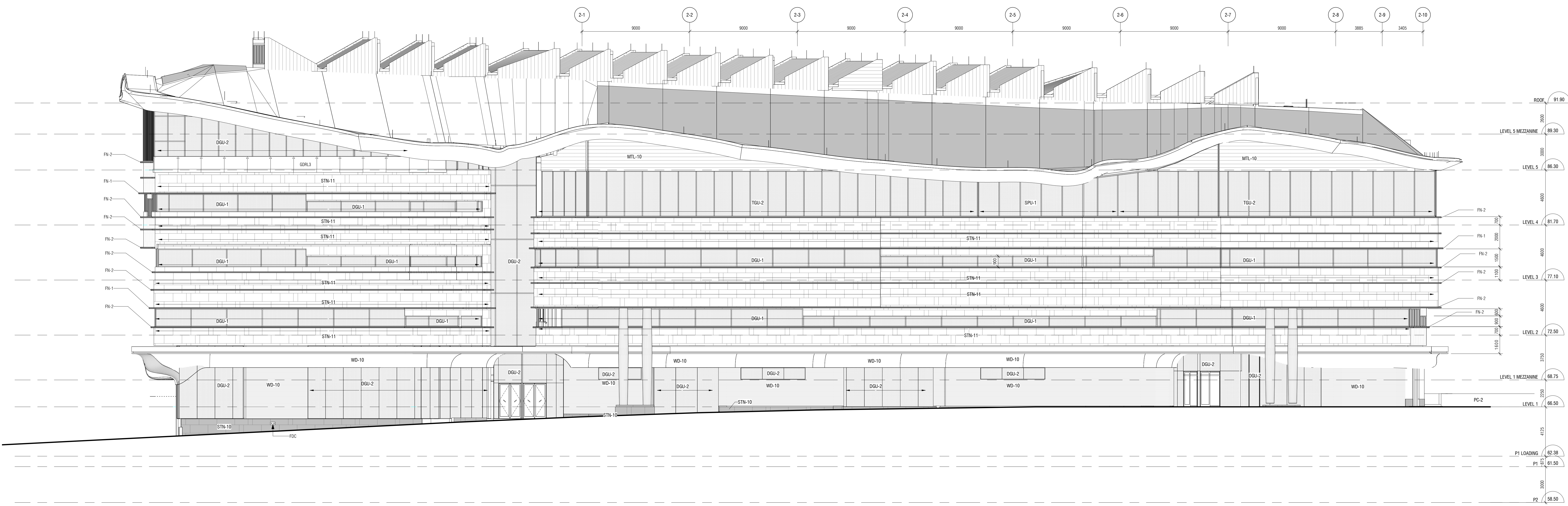
WD-10  
CROSS-GRAIN FIBRE WOOD  
18mm X 88mm HORIZONTAL WOOD  
STAMPING
- 

MTL-10, FN-1, FN-2 FLASHINGS,  
METAL PANEL, CORNER OR  
BREAK SHAPES  
HIGH PERFORMANCE EXTERIOR  
COATING CUSTOM COLOUR -  
BRONZE METALIC
- 

MTL-15  
ARCHITECTURAL METAL MESH  
CUSTOM COLOUR - BRONZE
- 

DGL-1, DGL-2, DGL-3  
CLEAR GLASS WITH BRD FRIENDLY  
FRUIT PATTERN

1 NORTH ELEVATION  
A300 1:125



**OTTAWA PUBLIC LIBRARY AND ARCHIVES CANADA JOINT FACILITY**

**ELEVATIONS**

Scale: As indicated  
 Project No:  
 Date:

5/28/2020 11:55:02 AM