

Douglas James

DOUGLAS JAMES, MCIP, RPP
MANAGER, DEVELOPMENT REVIEW - CENTRAL
PLANNING, INFRASTRUCTURE & ECONOMIC
DEVELOPMENT DEPARTMENT, CITY OF OTTAWA

APPROVED
By Douglas James at 3:13 pm, Feb 07, 2022



1 WEST ELEVATION
A3.01 1:200



2 WEST COURTYARD ELEVATION
A3.02 1:200

PROJECT TEAM

ARCHITECT
HOBIN ARCHITECTURE
RHEA LABELLE
T 613.238.7200

OWNERSHIP
CLV GROUP DEVELOPMENTS LTD.
OT DREWNAK
JOSE TAYARES
T 905.818.3385

PLANNING
FOTENNI PLANNING + DESIGN
BRIAN CASAGRANDE
T 613.730.5709; 235
KERSTEN NITSCHKE
T 613.730.5709; 291

CIVIL
PARSONS
MEGHAN MACSWEEN
T 613.738.4160

LANDSCAPE ARCHITECT
CSW LANDSCAPE ARCHITECTS
JERRY CORLUSH
T 613.729.4536; 233
SHANNON CARD
T 613.729.4536; 235

TRANSPORTATION
CGH TRANSPORTATION
MARK CROCKFORD
T 905.251.4070

ENVIRONMENTAL
GRADIENT WIND
JOSHUA FOSTER
T 613.836.0934; 116

LEGEND:

- AP ALUMINUM PANEL
- BV-1 BRICK VENEER - 1
- BV-2 BRICK VENEER - 2
- GR GLASS RAILING
- MR METAL RAILING
- MS-1 METAL SIDING - 1
- MS-2 METAL SIDING - 2
- MS-3 METAL SIDING - 3
- SP SPANDREL PANEL
- STC STEEL COLUMN
- VG VISION GLASS

BIRD FRIENDLY GLASS - AS PER CITY BIRD SAFE GUIDELINES
GUIDELINE 2 - Treatments to be applied to a minimum of 80%
of the area within the first 55 meters of height
1. GLASS SPECIFIED TO BE LOW REFLECTIVITY ON LEV 1-6
2. GLASS FINI FOR ALL BALCONY RAILINGS ON LEV 1-6

01 21-04-04 ISSUED FOR SPA & ZBA

no. date revision

It is the responsibility of the appropriate contractor to check and verify all dimensions on site and report all errors and/or omissions to the architect.

All contractors must comply with all pertinent codes and by-laws.

Do not scale drawings.

This drawing may not be used for construction until signed.

Copyright reserved.

Hobin Architecture Incorporated

63 Parnilla Street
Ottawa, Ontario
Canada K1S 3K7
T: 613-238-7200
F: 613-235-2065
E: email@hobinarc.com
hobinarc.com



PROJECT/LOCATION:

327 RICHMOND

327 RICHMOND ROAD

DRAWING TITLE:

ELEVATIONS

DRAWN BY: DATE: SCALE:
RL 2020-12-18 1:200

PROJECT: DRAWING NO.:
1919

ONTARIO ASSOCIATION OF ARCHITECTS
MARK J. HOBIN
LICENCE 3049

A3-01

REVISION NO.:
DWG 18218

DJ

DOUGLAS JAMES, MCIP, RPP
MANAGER, DEVELOPMENT REVIEW - CENTRAL
PLANNING, INFRASTRUCTURE & ECONOMIC
DEVELOPMENT DEPARTMENT, CITY OF OTTAWA

APPROVED
By Douglas James at 3:13 pm, Feb 07, 2022



1 SOUTH ELEVATION
A3.02 1:200



2 NORTH ELEVATION
A3.02 1:200

PROJECT TEAM

ARCHITECT
HOBIN ARCHITECTURE
RHEAL LABELLE
T 613.238.7200



OWNERSHIP
CLV GROUP DEVELOPMENTS LTD.
OZ DREWIAK
JOSIE TAVARES
T 905.818.3385

PLANNING
FOTENN PLANNING + DESIGN
BRIAN CASAGRANDE
T 613.730.5709; 235
KERSTEN NITSCHKE
T 613.730.5709; 291

CIVIL
PARSONS
MEGHAN MACSWEEN
T 613.738.4160

LANDSCAPE ARCHITECT
CSW LANDSCAPE ARCHITECTS
JERRY CORUSH
T 613.729.4536; 233
SHANNON CARD
T 613.729.4536; 235

TRANSPORTATION
CGH TRANSPORTATION
MARK CROCKFORD
T 905.251.4070

ENVIRONMENTAL
GRADIENT WIND
JOSHUA FOSTER
T 613.836.0934; 116

LEGEND:

- AP ALUMINUM PANEL
- BV-1 BRICK VENEER - 1
- BV-2 BRICK VENEER - 2
- GR GLASS RAILING
- MR METAL RAILING
- MS-1 METAL SIDING - 1
- MS-2 METAL SIDING - 2
- MS-3 METAL SIDING - 3
- SP SPANDREL PANEL
- STC STEEL COLUMN
- VG VISION GLASS

BIRD FRIENDLY GLASS - AS PER CITY BIRD SAFE GUIDELINES
GUIDELINE 2 - Treatments to be applied to a minimum of 80%
of the area within the first 15 meters of height
1. GLASS SPECIFIED TO BE LOW REFLECTIVITY ON LEV 1-6
2. GLASS FINI FOR ALL BALCONY RAILINGS ON LEV 1-6

01 21-04-09 ISSUED FOR SPA & ZBA

no. date revision

It is the responsibility of the appropriate contractor to check and verify all dimensions on site and report all errors and/or omissions to the architect.

All contractors must comply with all pertinent codes and by-laws.

Do not scale drawings.

This drawing may not be used for construction until signed.

Copyright reserved.

Hobin Architecture
Incorporated

63 Parnilla Street
Ottawa, Ontario
Canada K1S 3K7
T: 613-238-7200
F: 613-235-2065
E: email@hobinarc.com
hobinarc.com



PROJECT/LOCATION:

327 RICHMOND

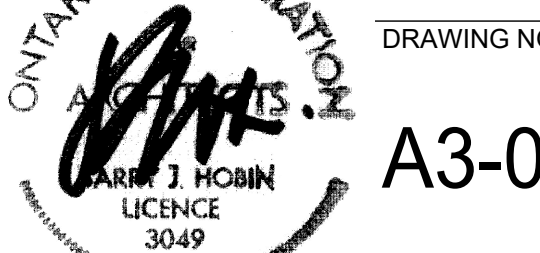
327 RICHMOND ROAD

DRAWING TITLE:

ELEVATIONS

DRAWN BY: DATE: SCALE:
RL 2020-12-18 1:200

PROJECT: DRAWING NO.:
1919

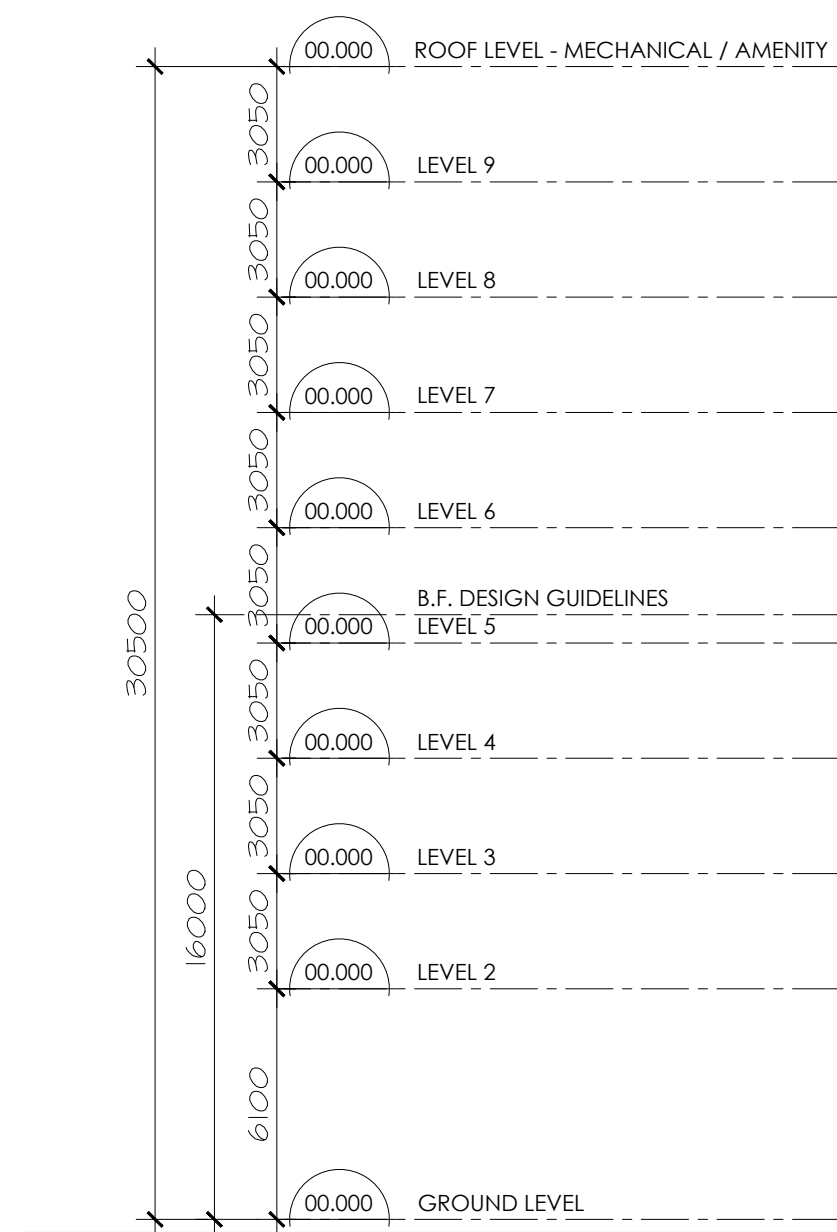


A3-02

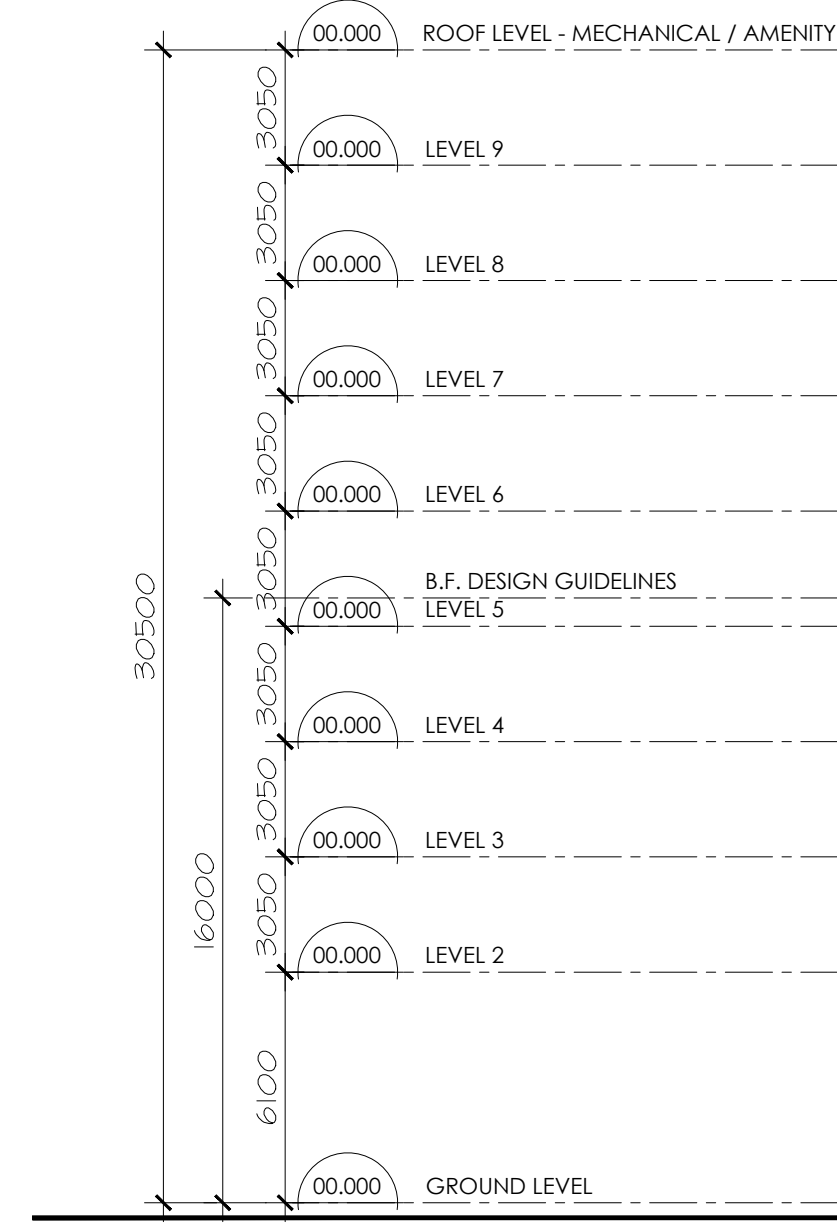
REVISION NO.:
DWG 18218

DOUGLAS JAMES, MCIP, RPP
MANAGER, DEVELOPMENT REVIEW - CENTRAL
PLANNING, INFRASTRUCTURE & ECONOMIC
DEVELOPMENT DEPARTMENT, CITY OF OTTAWA

APPROVED
 By Douglas James at 3:14 pm, Feb 07, 2022



1 EAST ELEVATION
 A3.03 1:200



2 EAST COURTYARD ELEVATION
 A3.03 1:200



PROJECT TEAM

ARCHITECT
 HOBIN ARCHITECTURE
 RIEAL LABELLE
 T 613.238.7200

OWNERSHIP
 CLV GROUP DEVELOPMENTS LTD.
 OZ DREWNAK
 JOSIE TAVARES
 T 905.818.3385

PLANNING
 FOTENNI PLANNING + DESIGN
 BRIAN CASAGRANDE
 T 613.730.5709; 235
 KERSTEN NITSCHKE
 T 613.730.5709; 291

CIVIL
 PARSONS
 MEGHAN MACSWEEN
 T 613.738.4160

LANDSCAPE ARCHITECT
 CSW LANDSCAPE ARCHITECTS
 JERRY CORUSH
 T 613.729.4536; 233
 SHANNON CARD
 T 613.729.4536; 235

TRANSPORTATION
 CGH TRANSPORTATION
 MARK CROGFORD
 T 905.251.4070

ENVIRONMENTAL
 GRADIENT WIND
 JOSHUA FOSTER
 T 613.836.0934; 116



LEGEND:

- AP ALUMINUM PANEL
- BV-1 BRICK VENEER - 1
- BV-2 BRICK VENEER - 2
- GR GLASS RAILING
- MR METAL RAILING
- MS-1 METAL SIDING - 1
- MS-2 METAL SIDING - 2
- MS-3 METAL SIDING - 3
- SP SPANDREL PANEL
- STC STEEL COLUMN
- VG VISION GLASS

BIRD FRIENDLY GLASS - AS PER CITY BIRD SAFE GUIDELINES
 GUIDELINE 2 - Treatments to be applied to a minimum of 80%
 of the area within the first 15 meters of height
 1. GLASS SPECIFIED TO BE LOW REFLECTIVITY ON LEV 1-6
 2. GLASS FINIT FOR ALL BALCONY RAILINGS ON LEV 1-6

no.	date	revision
01	21-04-04	ISSUED FOR SPA & ZBA

It is the responsibility of the appropriate contractor to check and verify all dimensions on site and report all errors and/or omissions to the architect.

All contractors must comply with all pertinent codes and by-laws.

Do not scale drawings.

This drawing may not be used for construction until signed.

Copyright reserved.

Hobin Architecture Incorporated
 63 Parnilla Street
 Ottawa, Ontario
 Canada K1S 3K7
 T: 613-238-7200
 F: 613-235-2065
 Email: hobinarc.com
 hobinarc.com

PROJECT/LOCATION:
 327 RICHMOND
 327 RICHMOND ROAD

DRAWING TITLE:
 ELEVATIONS

DRAWN BY: RL	DATE: 2020-12-18	SCALE: 1:200
PROJECT: 1919		DRAWING NO.: A3-03

REVISION NO.:
 DWG 18218